



Interim Year-Round Men's Shelter Lincoln Center Feasibility Study

Bellevue City Council
April 8, 2019

Nancy LaCombe
Assistant Director
City Manager's Office

Mike Brennan
Director
Development Services



Meeting Objectives

- Update and status – Lincoln Center
- Performance of construction
 - Seeking Council Direction
- Shelter services “bridge” location



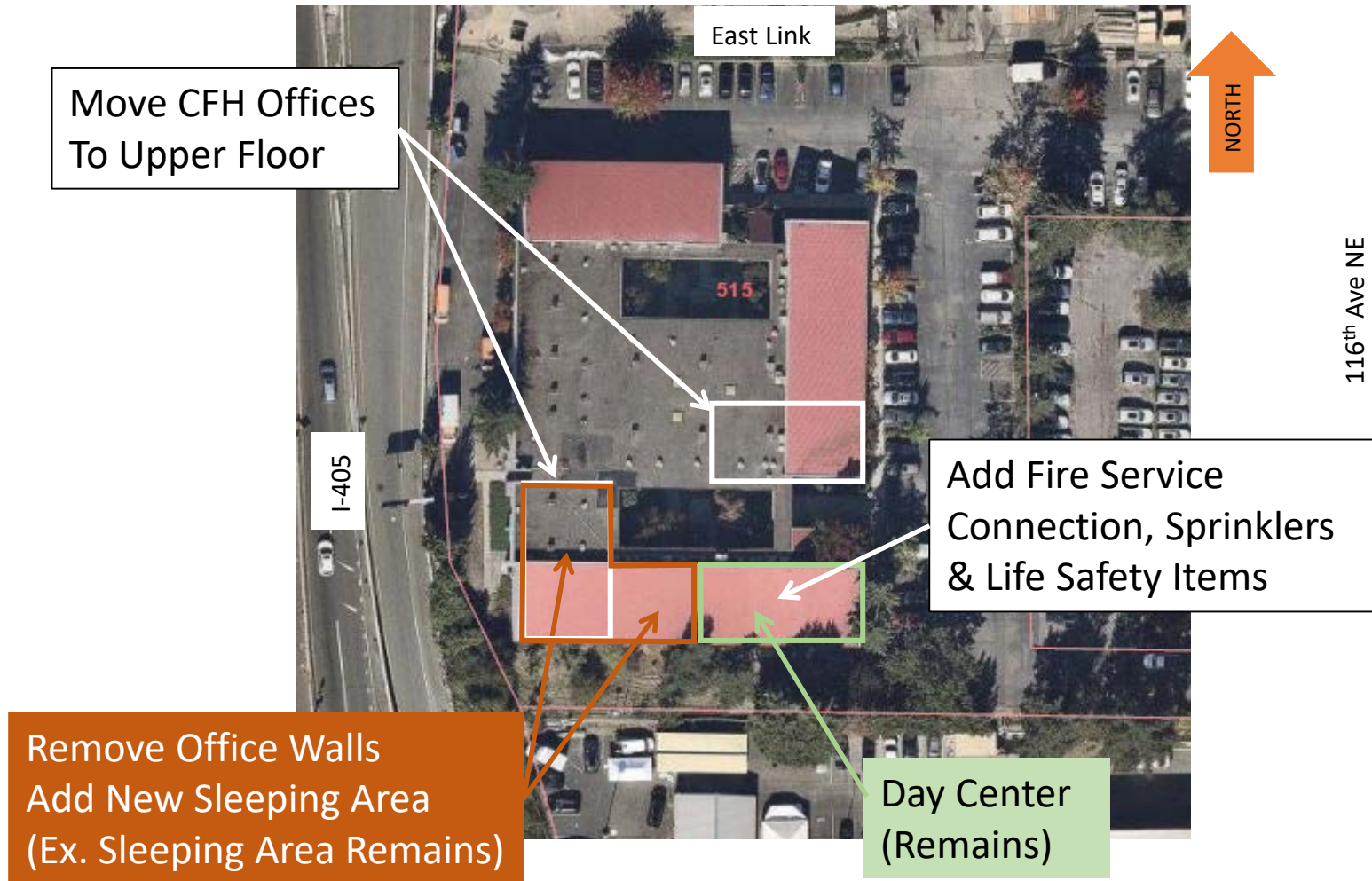
Background

- **July 23, 2018 – Council Request**
 - Evaluate feasibility for year-round men's shelter – Lincoln Center
 - Assist CFH (code compliance, funding opportunities, permit applications)
 - Develop collaborative schedule: year-round end 2019
- **November 5, 2018 – Feasibility Study**
 - Authorized expenditure of \$135,000 for testing and design advancement
- **March 18, 2019 – Update**
 - Provided detail on Lincoln Center changes
 - Performance of construction
 - Shelter services gap
 - Operational funding

Continue working with CFH team – Next Update in May



Proposed Changes



Performance of Construction

April 3 CFH Commitment Letter

- Begin work June 1 (pending permitting)
- Complete 3-4 months
- Estimated cost \$750,000
- Commitment to fund and manage construction



CFH Community Partners



Shelter Services Gap

- April 30 closure of winter shelter
- Continuing to seek secondary location during construction at Lincoln Center
- Even if secondary “bridge” location is found there will be a gap in services
- Requires
 - Negotiation of lease terms
 - Coordination with CFH
 - Additional public engagement
- Reminder: Similar Land Use Process
 - Declaration of emergency
 - Application for Temporary Public Safety Facility



Public Engagement Plan

For Extension of Services & Bridge Location

- Inform community of potential changes
 - Mailed notifications
 - Web, listserv/email notifications
 - News release, Facebook and Nextdoor notifications
 - COB/BPD coordinate engagement with CFH
 - CFH continued engagement and discussion with surrounding businesses
- Gather feedback on communication essentials for shelter services
- CFH address concerns in their communication plan



Staff Recommendation

- **Continue to work toward privately funded and managed tenant improvements**
 - Complete design and submit for permits
 - Negotiation for lease modifications
 - City permitting and oversight
 - Begin public engagement
 - Begin early work while shelter operational
- **Continue to work to close gap in services**

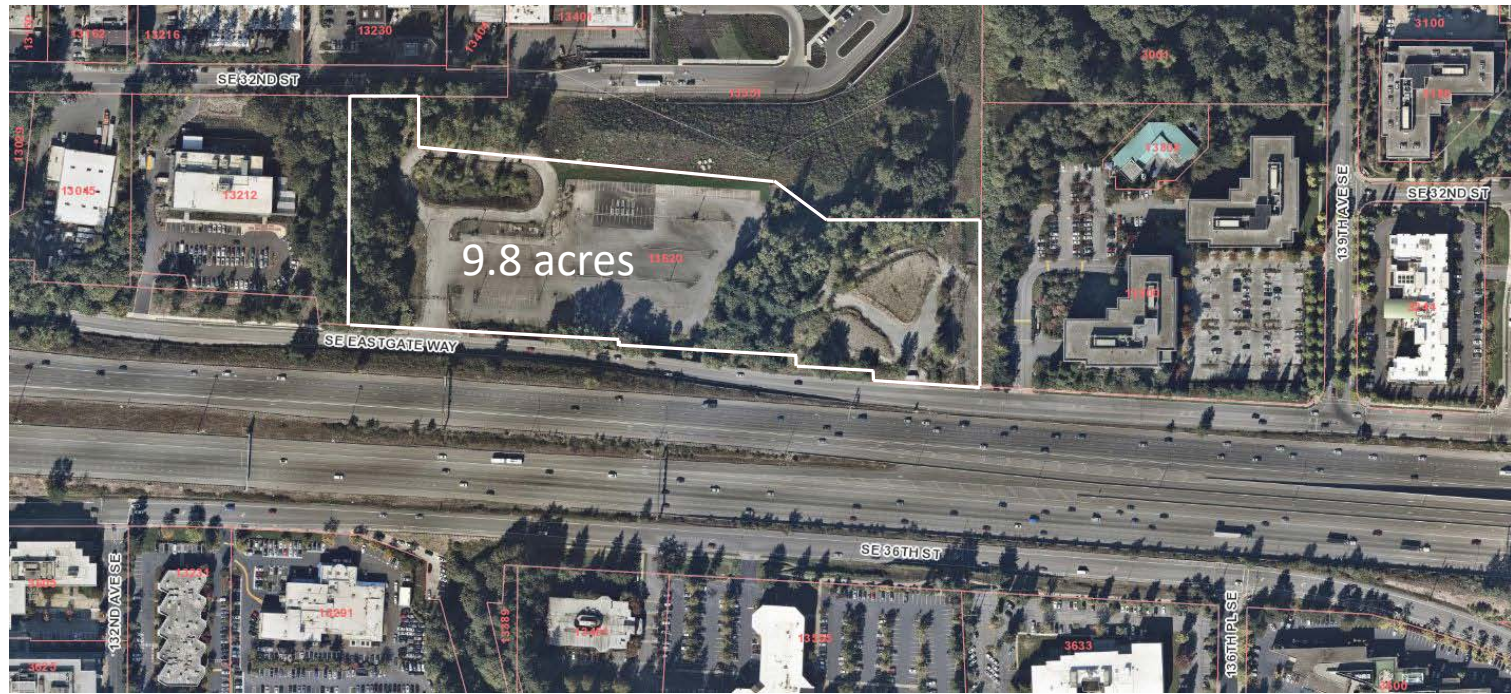


Staff Recommendation

- **Update Council in May**
 - Private funding status
 - “Bridge” location
 - Community engagement
 - Land Use Code process and timeline
- **If adequate funds have not been raised**
 - Allow more time for fundraising
 - City perform construction as public work
 - Continue operations as a winter shelter only



Permanent Shelter Update



- December 2018 - CFH announced working with King County
- CFH performing due diligence
- Working with K.C. & CFH to determine smoothest path to obtain necessary permits and approvals



Questions?





Potential “Bridge” Location

