

Talking About Trees



NEIGHBORHOOD LEADERSHIP GATHERING REPORT



Mike McCormick Huentelman
Mark Heilman
April 8, 2019

Agenda



- ☐ Overview
- ☐ Meeting Synopsis
- ☐ What We Heard
- ☐ Next Steps

Information Only –
No Council Action
Requested



Neighborhood Leadership Gatherings



2013	February	Neighborhood Priorities
2013	September	Public Safety and Neighborhood Concerns
2014	February	Budget Priorities
2014	October	Neighborhood Character
2015	February	Economic Development & Neighborhoods
2015	September	Neighborhood Improvement
2016	February	Transportation – The Road Ahead
2016	October	Picturing the Future of Bellevue’s Neighborhoods
2017	February	Diversity - Changing Face of Bellevue Neighborhoods
2017	October	Dialogue Between Leaders (City and Neighborhood)
2018	February	Planning for Growth
2018	September	Utilities – Invisible System, Visible Benefits
2019	February	Talking about Trees

Tree Canopy Trends



**Jennifer Ewing,
Environmental Stewardship
Program Manager**

Trees and Development



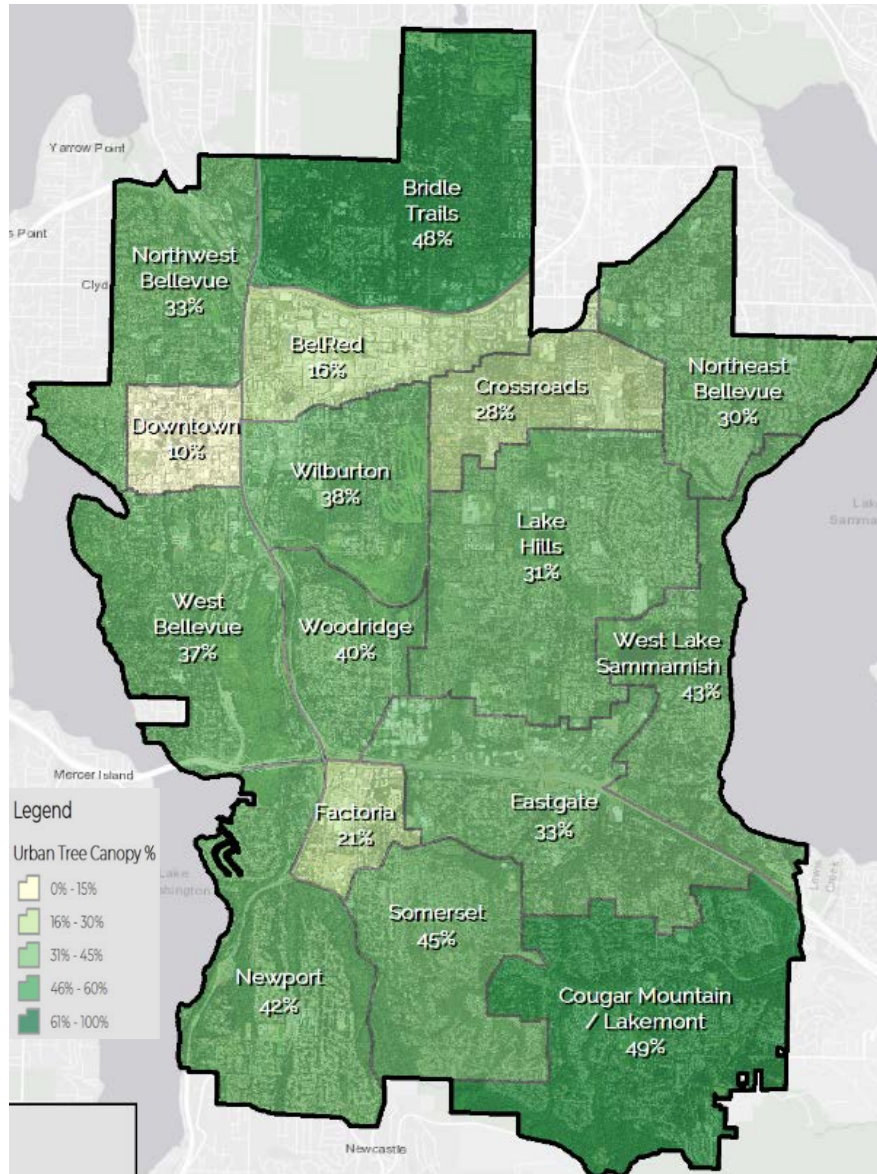
**Matthews Jackson,
Neighborhood Development
Planning Manager**

Caring for Trees in Our Parks



**Geoff Bradley,
Natural Resource Manager**

Tree Canopy by Neighborhood



	Urban Tree Canopy	
	Acres	%
BelRed	148	15%
Bridle Trails	977	48%
Cougar Mountain/ Lakemont	1,155	49%
Crossroads	225	28%
Downtown	45	10%
Eastgate	586	33%
Factoria	83	21%
Lake Hills	689	31%
Newport	720	42%
Northeast Bellevue	427	30%
Northwest Bellevue	438	33%
Somerset	584	45%
West Bellevue	621	37%
West Lake Sammamish	472	40%
Wilburton	416	38%
Woodridge	289	40%
Total	7,875	37%

Residents' Discussion



- **How can we preserve and grow our tree canopy?**
- **What can the City, along with residents, businesses and other partners do to help achieve the 40% tree canopy goal?**

Community Input



Community Outreach
and Engagement

Partner with
Residents

City Streetscapes

General Comments

Land Use Code
Recommendations

Development
Concerns

Community
Partnerships

Incentivize Tree Planting
and Preservation



General Comments

A group of five children are gathered around a newly planted sapling in a lush garden. One boy in a grey hoodie is filling soil around the base of the tree. A girl in a pink shirt stands nearby, and another boy in a white shirt is in the foreground with his back to the camera. Two other children, a girl in a blue hoodie and a boy in a blue shirt, are also present. The garden is filled with various plants, including large-leafed green foliage and ferns. A stone wall is visible in the background.

Community Outreach and Engagement



Incentivize Tree Planting and Preservation

City Streetscape





Development Concerns



Land Use Code Recommendations



Community Partnerships

Resources and Opportunities



RESOURCES

- **Environmental Stewardship Initiative Strategic Plan Update**
www.bellevuewa.gov/environment
- **Tree resources**
www.bellevuewa.gov/trees
- **Great Neighborhoods**
www.Engagingbellevue.com
- **Volunteering**
<https://bellevuewa.gov/volunteering>

EVENTS



Celebrate!
ARBOR DAY - EARTH DAY

Saturday, April 20, 2019

Volunteer Projects: 9 – 11 am
Family Festival: 11 am – 1:30 pm

Lewis Creek Park, 5808 Lakemont Blvd. SE
(See map on reverse)

Join the fun!



- Celebrate Bellevue's 28th year as a Tree City USA community and 26th year as a National Arbor Day Foundation Growth Award recipient.
- In the morning, volunteers will be in Lewis Creek Park planting trees & shrubs, removing noxious weeds, and restoring trails. Projects are limited, so reserve your space today!
- At our Family Festival, local environmental organizations will host free activities and eco-demonstrations. Plant a tree with your family! Kids can complete a discovery passport to be entered into a prize drawing. Bellevue Park Rangers and elected officials will host a ceremonial tree planting at 11:30am.
- For more information please contact:
425-452-4195 or LCVC@BellevueWA.gov

 Meetings are wheelchair accessible. Captioning, American Sign Language (ASL), or language interpreters are available upon request. Please phone at least 48 hours in advance: 425-452-4195 (Voice) or City@BellevueWA.gov. If you are deaf or hard of hearing, dial 711 (TDD). Assisted listening device is available upon request. For questions or concerns regarding reasonable accommodations, contact City of Bellevue ADA/Title VI Administrator at 425-452-6168 (Voice).

 **THE NATIONAL**
Arbor Day Foundation

 **Bellevue Parks & Community Services**

 **PACIFIC SCIENCE CENTER**



Next Steps

Arbor Day and Earth Day

Environmental Stewardship Initiative Update



Contact Information

Mike McCormick Huentelman

Assistant Director,
Community Development
mmhuent@bellevuewa.gov

Mark Heilman

Neighborhood Outreach Manager
mheilman@bellevuewa.gov



Questions