



---

City of Bellevue

# Cultural Compass

**A Review of the 2004 Plan & the Future of the Arts**

Joshua Heim | Community Development Department

May 13, 2019


---



# **Direction Needed from Council**

Staff seeks direction on conducting a cultural needs assessment and updating the Strategic Vision and Core Initiatives section of the Cultural Compass Plan.

# AGENDA



Overview of the 2004 Cultural Compass Plan



Why an update is needed



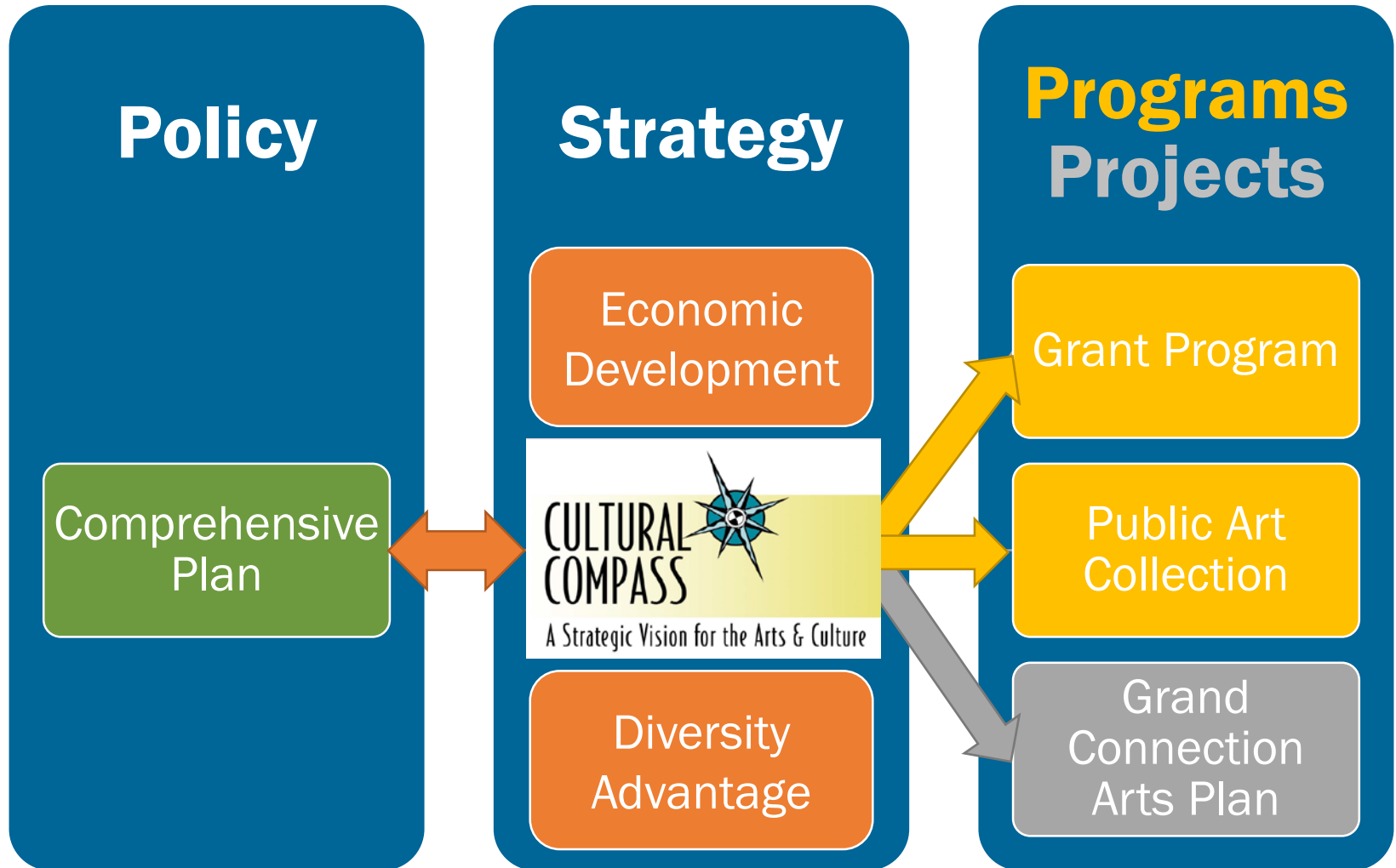
Scope, approach and next steps

# Overview: 2004 Vision



*“By 2015, Bellevue’s cultural sector will have reached adulthood.”*

# Overview: Policy implications



# Overview: 2004 Core Initiatives



Participation



Districts



Leadership



Visibility

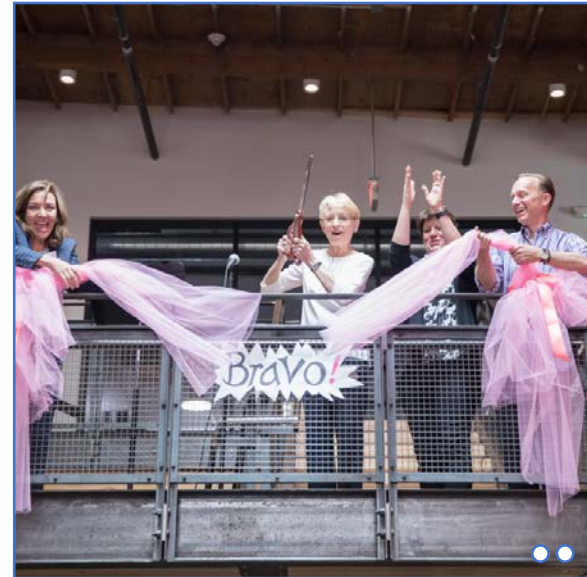
# Overview: Achievements



○ Bellevue Youth Theatre ○

○ Pacific Northwest Ballet ○

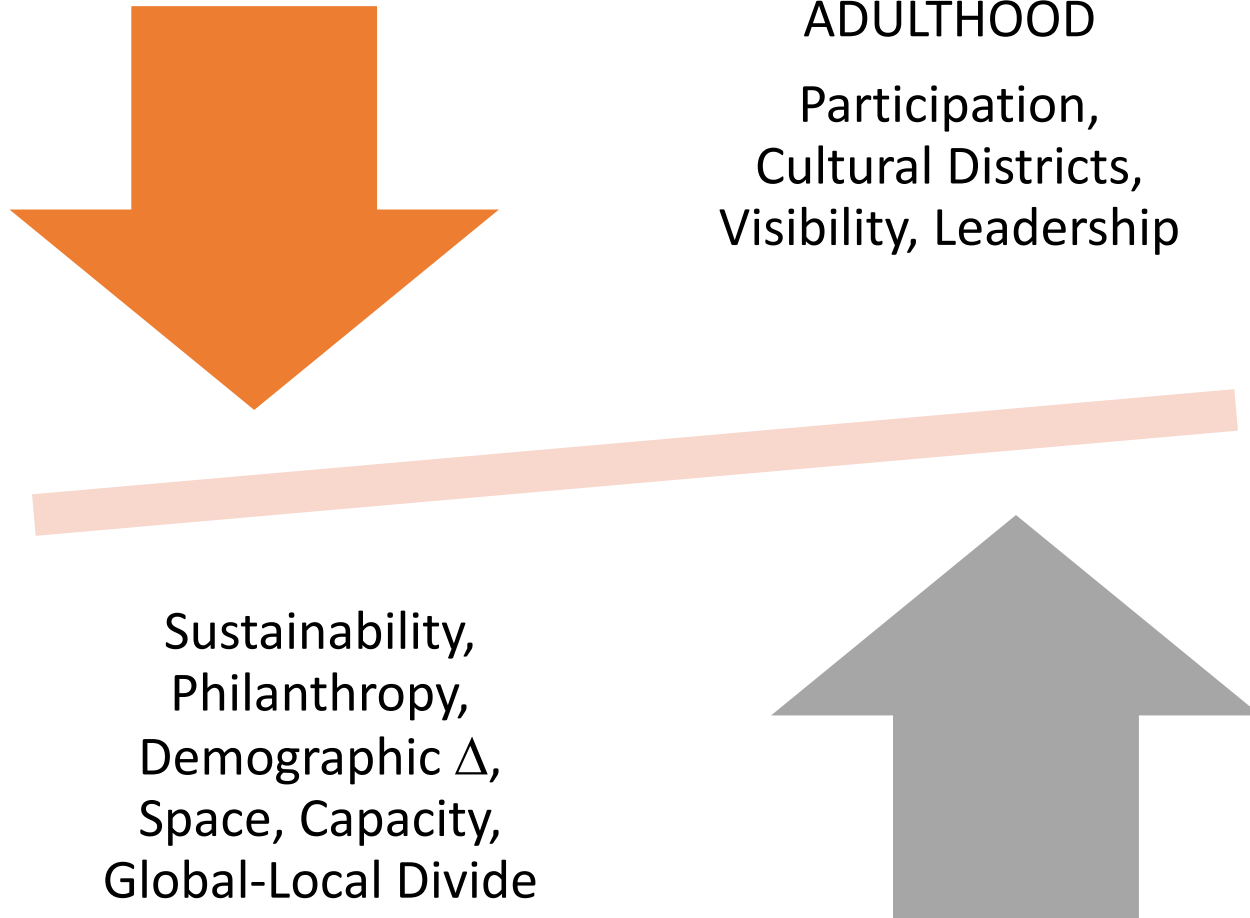
○ KidsQuest Children's Museum ○



○ Pacific Science Center at Mercer Slough ○

○ Music Works Northwest ○

# Why an update is needed





# Why an update is needed

**2004**

## **Cultural Compass Vision**

*“Bellevue is the cultural center of the Eastside.*

*By 2015, Bellevue’s cultural sector will have reached adulthood.”*

**2014**

## **City Council Vision**

*“Bellevue welcomes the world. Our diversity is our strength.*

*We embrace the future while respecting our past.”*

# Update: Scope



# Update: Approach

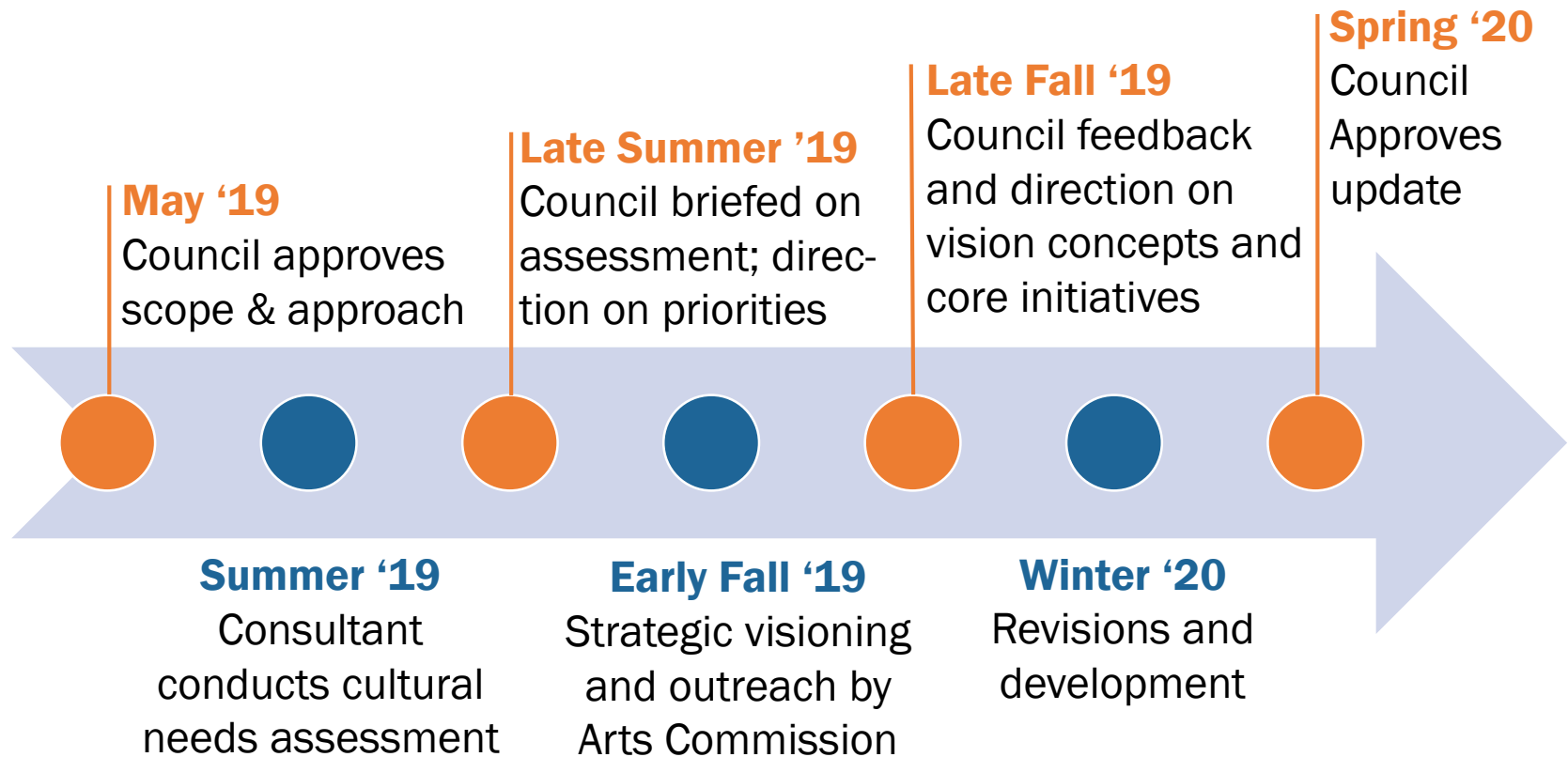
## **Cultural Needs Assessment**

- Resident survey
- Cultural community survey
- EngagingBellevue.com
- And more to be determined by the consultant

## **Strategic Visioning**

- Arts Commission
- Cultural community outreach
- EngagingBellevue.com
- And more to be determined by the consultant

# Update: Council Process





# **Direction Needed from Council**

Staff seeks direction on conducting a cultural needs assessment and updating the Strategic Vision and Core Initiatives section of the Cultural Compass Plan.