

NEIGHBORHOOD

SAFETY, CONNECTIVITY AND CONGESTION LEVY



Program Overview and Project Update

Dave Berg | Transportation Department Director
Marie Jensen | Levy Co-Manager
John Murphy | Levy Co-Manager
Chris Long | Neighborhood Congestion Reduction Program Manager
Transportation Department

Feb. 26, 2018

Agenda

- Background
- Levy funding & projects
- Project selection process
- Levy communications
- Q&A

Purpose of tonight's presentation is for information only; no action or direction is sought

Levy Background

- Voter-approved in 2016 (54% of vote)
- 20-year levy on property value
- 40+ projects in 2017-2018
- Council affirmed project list in February 2017
- Helps to do more of what we already do

Levy Background-key dates

2016:

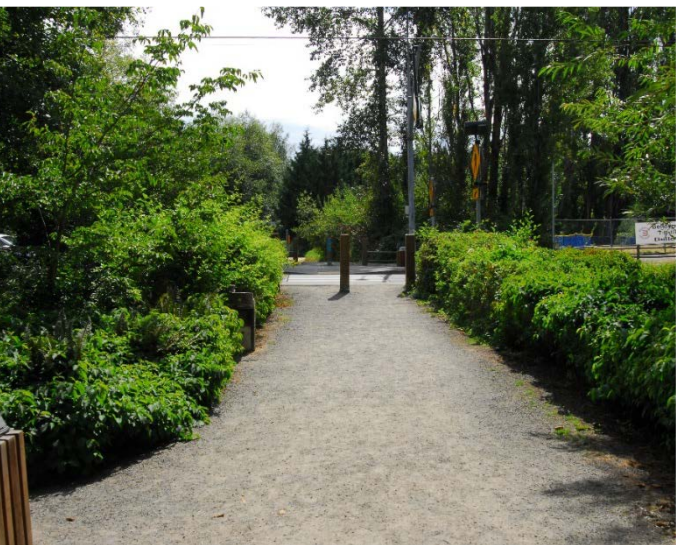
- Transportation Commission and Council explore funding mechanisms to deliver backlog neighborhood safety projects (spring/fall)
- Council authorizes ballot measure (July)
- Voters approve ballot measure (November)

2017:

- Council authorizes levy spending (March)
- Design of projects starts (March)
- First project kicks-off (July)
- First project complete (August)

2018:

- Transportation Commission approves Neighborhood Congestion Reduction Program workplan (January)
- Many projects in construction (summer)



Neighborhood Safety, Connectivity and Congestion Levy

\$7.4 million/year

20 year Levy

(Source: property tax: \$0.150 per \$1,000 of assessed value)

**Neighborhood Congestion
Reduction Program—*new
program***

**\$2 million/year
(PW-R-198)**

**Safety and Connectivity
Projects—*supports backlog of
safety, sidewalk, bike, ITS, and
maintenance projects***

**\$5.4 million/year
(PW-R-199)**

Project categories and annual levy funding allocation



Neighborhood
Congestion
Reduction

\$2,000,000/yr



Neighborhood
Safety

\$2,250,000/yr



Bicycle
Facilities

\$900,000/yr



Sidewalk and Trail
Maintenance

\$500,000/yr



Safety and Traffic
Management
Technology

\$500,000/yr



New Sidewalks,
Trails and Paths

\$1,125,000/yr

Sources of projects



New program; new evaluation criteria



Backlog of neighborhood traffic, crosswalk, traffic safety projects (M-2, M-7, M-20, R-46)



Bicycle Rapid Implementation Program (BRIP), Ped/bike access improvements (W/B-56)



Maintenance work plan, major maintenance backlog (M-19)



Smart Mobility Plan

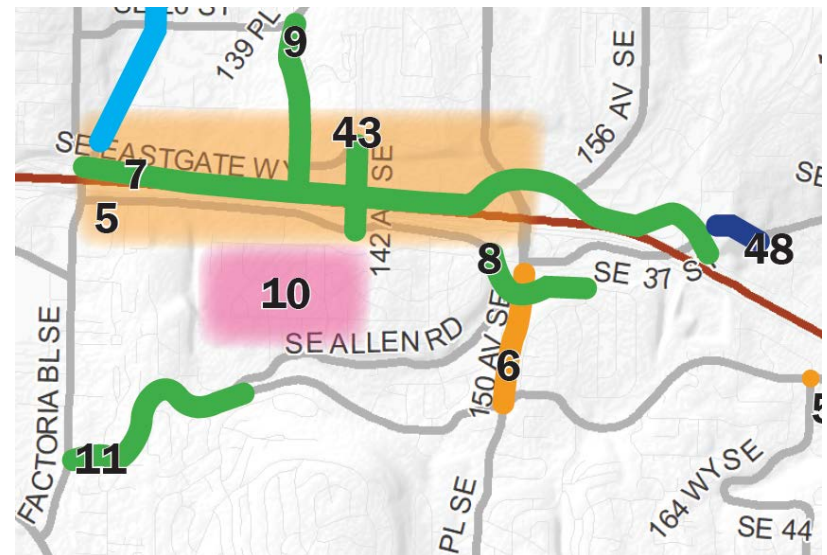


Neighborhood Sidewalk Program backlog (W/B-76)

2017-2018 Projects

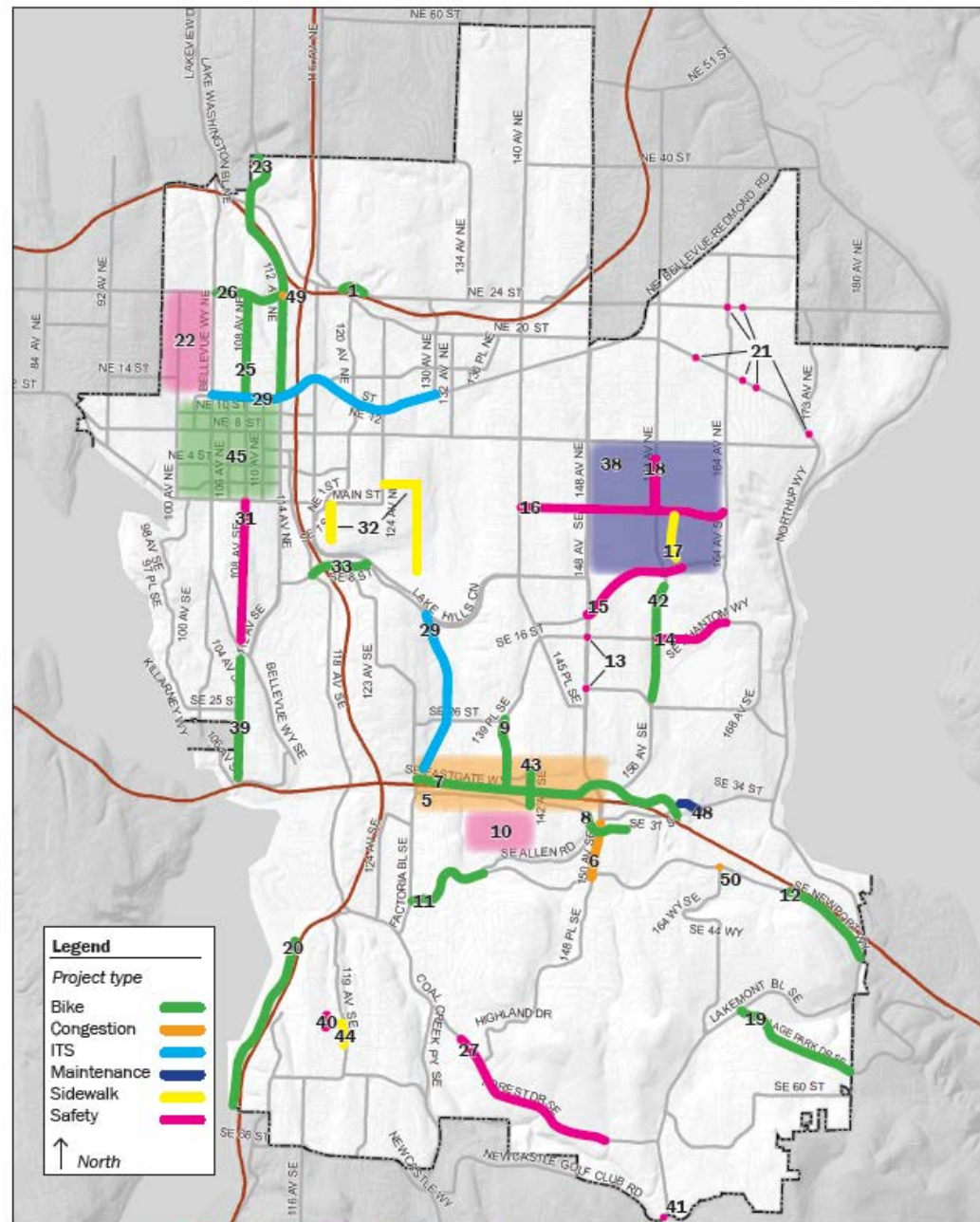
- 2017 focus on design
- 2018 focus on construction
- Package projects
 - Save money
 - Reduce impact

Current Phase	# Of Projects
Concept	14
Planning	4
30% Design	0
60% Design	9
90/100% Design	7
Construction	3
Complete	4



2017-2018 Project List

- 1 NE 24th St - Northup Way to SR-520 Trail
- 5 Eastgate Transportation Study
- 6 150th Ave SE at Newport Way & SE 37th St
- 7 Eastgate Way - Richards Rd to I-90 Trail
- 8 SE 38th St - I-90 Overpass to 154th Ave SE
- 9 139th Ave SE - Eastgate Way to Kamber Rd
- 10 Tye Middle School Safety
- 11 Newport Way west of 150th Ave SE
- 12 Newport Way east of 150th Ave SE
- 13 148th Ave SE - SE 16th/22nd Sts plus sidewalks
- 14 SE 16th St - 156th to 164th Aves SE
- 15 Lake Hills Blvd - 148th to 159th Aves SE
- 16 Main St - 140th to 164th Aves SE
- 17 158th Pl SE - Main St to SE 6th St
- 18 156th Ave NE Corridor Crosswalks
- 19 Village Park Dr - Lakemont Blvd to 179th Ave SE
- 20 Lake Wash Blvd - South City Line to Loop Trail
- 21 NE Bellevue Crosswalk Grant Match
- 22 100th Ave NE and Vicinity Complete Streets Project
- 23 112th Ave NE - NE 12th St to N. City Limit
- 25 108th Ave NE - NE 12th to NE 24th Sts
- 26 NE 24th St - Bellevue Way to 112th Ave NE
- 27 Forest Drive Pedestrian Crossings
- 28 ITS - Communications Upgrade and Travel Time
- 29 ITS - LED Lighting Upgrades (2 locations)
- 31 108th Ave SE - Bellevue Way to Main St
- 32 Wilburton Sidewalks Project
- 33 SE 8th St - 114th Ave SE to Lake Hills Connector
- 35 New ITS Partnerships
- 36 Congestion Traffic Analysis for (9) Intersections
- 38 156th Ave NE Corridor Sidewalk Maintenance
- 39 108th Ave SE - SE 30th St to Bellevue Way
- 40 117th Ave SE sidewalk
- 41 Lakemont Blvd at Red Town Trailhead Ped Crossing
- 42 156th Ave bike project
- 43 142nd Ave SE bike project
- 44 119th Ave SE sidewalk
- 45 Downtown Demonstration Bikeway
- 46 Boardwalk replacement
- 47 Bike counters
- 48 SE 35th Pl Interim Walkway
- 49 NE 24th St/112th Ave NE Traffic Signal
- 50 Newport Way/164th Ave SE Mini Roundabout

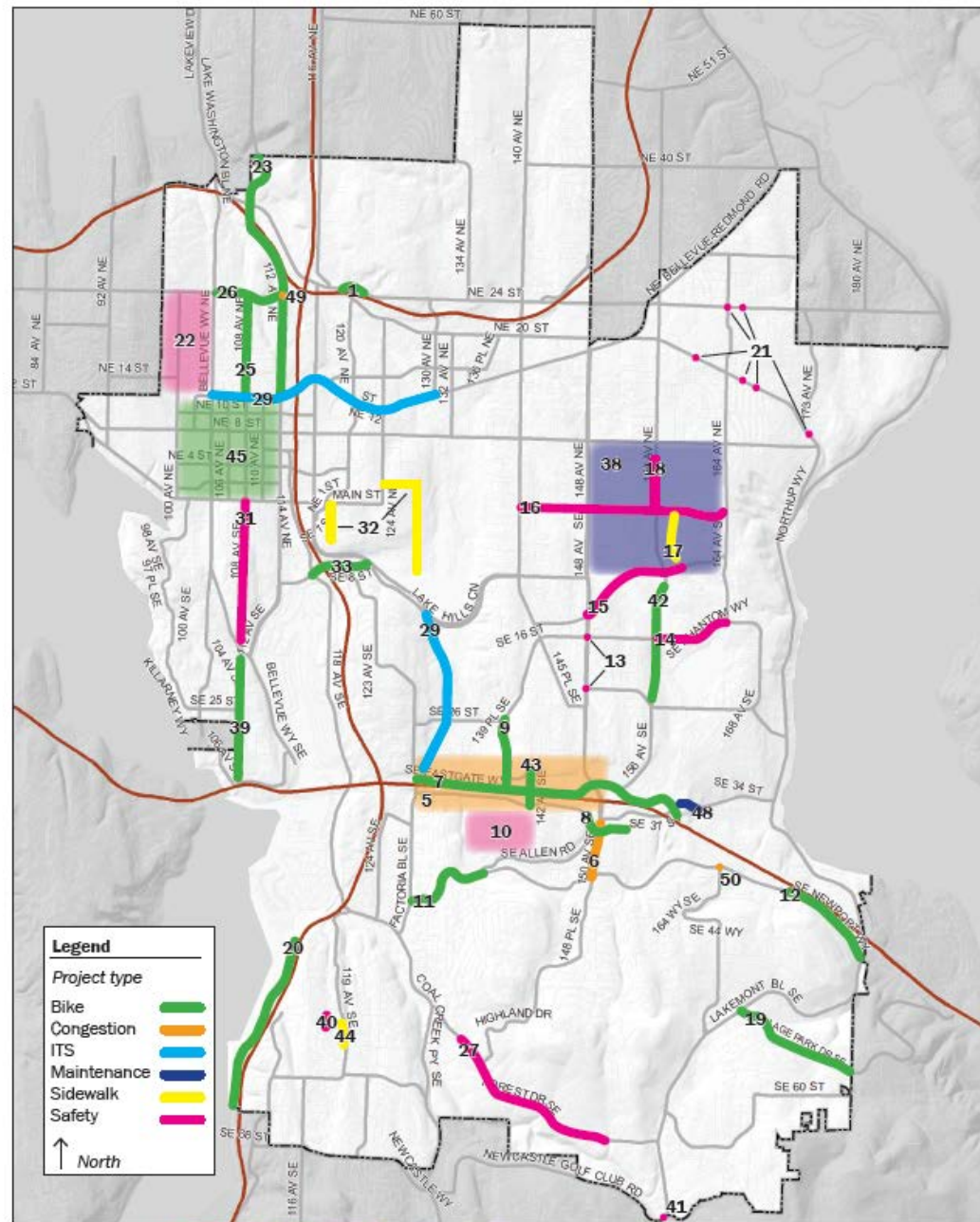


Citywide projects: #28 (ITS), #35 (ITS), #36 (Congestion), #46 (Maintenance), #47 (Bike)

Last updated: 2/21/18

2017-2018 Project List

- 1 NE 24th St - Northup Way to SR-520 Trail
- 5 Eastgate Transportation Study
- 6 150th Ave SE at Newport Way & SE 37th St
- 7 Eastgate Way - Richards Rd to I-90 Trail
- 8 SE 38th St - I-90 Overpass to 154th Ave SE
- 9 139th Ave SE - Eastgate Way to Kamber Rd
- 10 Tye Middle School Safety
- 11 Newport Way west of 150th Ave SE
- 12 Newport Way east of 150th Ave SE
- 13 148th Ave SE - SE 16th/22nd Sts plus sidewalks
- 14 SE 16th St - 156th to 164th Aves SE
- 15 Lake Hills Blvd - 148th to 159th Aves SE
- 16 Main St - 140th to 164th Aves SE
- 17 158th Pl SE - Main St to SE 6th St
- 18 156th Ave NE Corridor Crosswalks
- 19 ● Village Park Dr - Lakemont Blvd to 179th Ave SE
- 20 ● Lake Wash Blvd - South City Line to Loop Trail
- 21 NE Bellevue Crosswalk Grant Match
- 22 100th Ave NE and Vicinity Complete Streets Project
- 23 112th Ave NE - NE 12th St to N. City Limit
- 25 108th Ave NE - NE 12th to NE 24th Sts
- 26 ● NE 24th St - Bellevue Way to 112th Ave NE
- 27 Forest Drive Pedestrian Crossings
- 28 ITS - Communications Upgrade and Travel Time
- 29 ● ITS - LED Lighting Upgrades (2 locations)
- 31 108th Ave SE - Bellevue Way to Main St
- 32 Wilburton Sidewalks Project
- 33 SE 8th St - 114th Ave SE to Lake Hills Connector
- 35 New ITS Partnerships
- 36 Congestion Traffic Analysis for (9) Intersections
- 38 156th Ave NE Corridor Sidewalk Maintenance
- 39 108th Ave SE - SE 30th St to Bellevue Way
- 40 117th Ave SE sidewalk
- 41 Lakemont Blvd at Red Town Trailhead Ped Crossing
- 42 156th Ave bike project
- 43 142nd Ave SE bike project
- 44 119th Ave SE sidewalk
- 45 Downtown Demonstration Bikeway
- 46 Boardwalk replacement
- 47 Bike counters
- 48 SE 35th Pl Interim Walkway
- 49 NE 24th St/112th Ave NE Traffic Signal
- 50 Newport Way/164th Ave SE Mini Roundabout



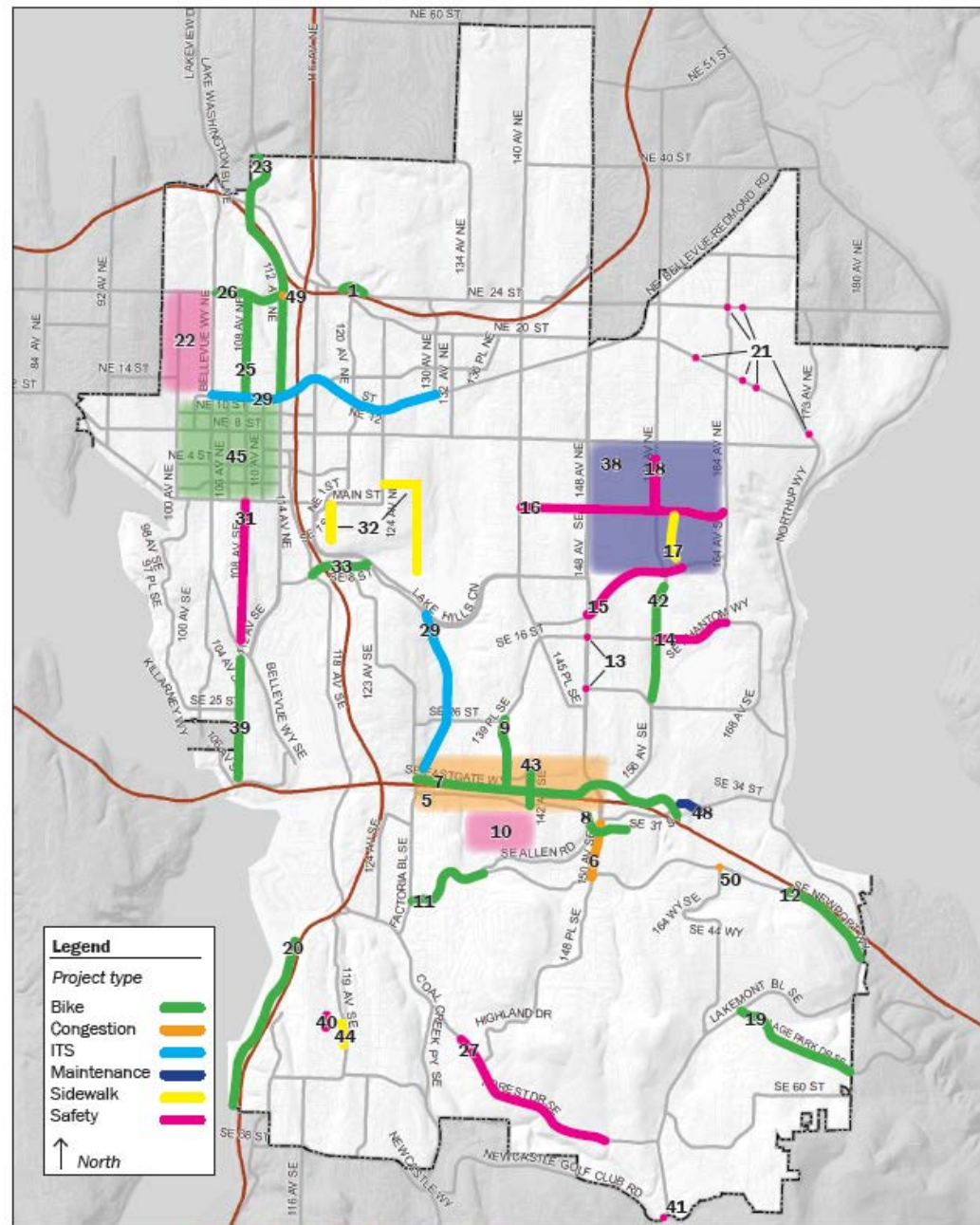
Citywide projects: #28 (ITS), #35 (ITS), #36 (Congestion), #46 (Maintenance), #47 (Bike)

Last updated: 2/21/18

● **COMPLETE**

2017-2018 Project List

- 1 ● NE 24th St - Northrup Way to SR-520 Trail
- 5 Eastgate Transportation Study
- 6 150th Ave SE at Newport Way & SE 37th St
- 7 Eastgate Way - Richards Rd to I-90 Trail
- 8 ● SE 38th St - I-90 Overpass to 154th Ave SE
- 9 ● 139th Ave SE - Eastgate Way to Kamber Rd
- 10 Tye Middle School Safety
- 11 Newport Way west of 150th Ave SE
- 12 Newport Way east of 150th Ave SE
- 13 148th Ave SE - SE 16th/22nd Sts plus sidewalks
- 14 SE 16th St - 156th to 164th Aves SE
- 15 Lake Hills Blvd - 148th to 159th Aves SE
- 16 Main St - 140th to 164th Aves SE
- 17 158th Pl SE - Main St to SE 6th St
- 18 156th Ave NE Corridor Crosswalks
- 19 Village Park Dr - Lakemont Blvd to 179th Ave SE
- 20 Lake Wash Blvd - South City Line to Loop Trail
- 21 NE Bellevue Crosswalk Grant Match
- 22 100th Ave NE and Vicinity Complete Streets Project
- 23 112th Ave NE - NE 12th St to N. City Limit
- 25 ● 108th Ave NE - NE 12th to NE 24th Sts
- 26 NE 24th St - Bellevue Way to 112th Ave NE
- 27 Forest Drive Pedestrian Crossings
- 28 ITS - Communications Upgrade and Travel Time
- 29 ITS - LED Lighting Upgrades (2 locations)
- 31 108th Ave SE - Bellevue Way to Main St
- 32 ● Wilburton Sidewalks Project
- 33 SE 8th St - 114th Ave SE to Lake Hills Connector
- 35 New ITS Partnerships
- 36 Congestion Traffic Analysis for (9) Intersections
- 38 156th Ave NE Corridor Sidewalk Maintenance
- 39 108th Ave SE - SE 30th St to Bellevue Way
- 40 117th Ave SE sidewalk
- 41 Lakemont Blvd at Red Town Trailhead Ped Crossing
- 42 ● 156th Ave bike project
- 43 ● 142nd Ave SE bike project
- 44 119th Ave SE sidewalk
- 45 Downtown Demonstration Bikeway
- 46 Boardwalk replacement
- 47 Bike counters
- 48 SE 35th Pl Interim Walkway
- 49 NE 24th St/112th Ave NE Traffic Signal
- 50 Newport Way/164th Ave SE Mini Roundabout



Citywide projects: #28 (ITS), #35 (ITS), #36 (Congestion), #46 (Maintenance), #47 (Bike)

Last updated: 2/21/18

● **DESIGN 90/100% COMPLETE**



Identifying levy-funded projects for 2019-2020

- Process similar to 2017-2018 project selection
 - Project identification starting now
- Will look to existing programs for project needs
- Staff-recommended list to be presented to Transportation Commission
- Transportation Commission affirmed list presented to City Council in summer 2018

Neighborhood Congestion Reduction Program



Neighborhood
Congestion
Reduction

- Dedicated funding from levy
- Transportation Commission recently developed evaluation criteria
- 2017 projects targeted work in Eastgate

Neighborhood Congestion Reduction Program—creation of project list



Neighborhood
Congestion
Reduction

- Resident comments from 2016 levy outreach
- Comprehensive Transportation Project List (including the Transportation Facilities Plan)
- Staff recommendations from past resident inquiries

Neighborhood Congestion Reduction Program—scoring criteria summary



Neighborhood
Congestion
Reduction

Tier 1

Evaluation of
projects based on
“NEED”
for improvements

Tier 2

Evaluation of
projects based on
“BENEFIT”
of improvements

Neighborhood Congestion Reduction Program-2018 Recommended Projects



Neighborhood
Congestion
Reduction

ANALYSIS

- Fund the nine (1-9) traffic analysis contracts informed by the Tier I scored project list

DESIGN

- Intersection Improvements at Newport Way/164th Ave NE, and 112th Ave NE/NE 24th Street
- Intersection Improvements on 150th Ave SE

CONSTRUCTION

- Intersection Improvements at Newport Way/164th Ave NE, and 112th Ave NE/NE 24th Street

Levy Communications



Upcoming Safe Routes to School Improvements for Bellevue High School



Example of a school zone flashing beacon

The City of Bellevue has heard concerns from residents about the safety of students walking to and from Bellevue High School. In order to heighten motorists' awareness of the number of people walking in the area around the school arrival and dismissal times, "20 MPH WHEN FLASHING" signs and yellow beacons will soon be installed on two streets next to Bellevue High School.

School zone signs and beacons will be installed on 108th Ave SE and on SE Wolzine Way. In addition, beacons will be installed on 108th Ave SE near the intersections of five side streets. These beacons will notify motorists who enter the 108th Ave SE school zone when the 20 mph speed limit is active and enforceable (See the map on back). When the beacons are not flashing, the speed limit will remain 25 mph on these streets.

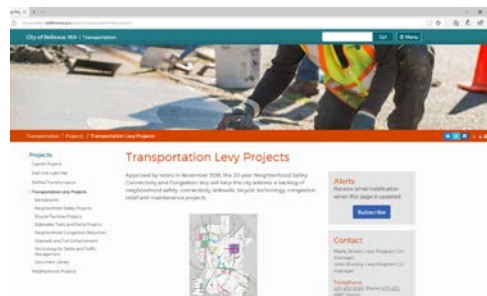
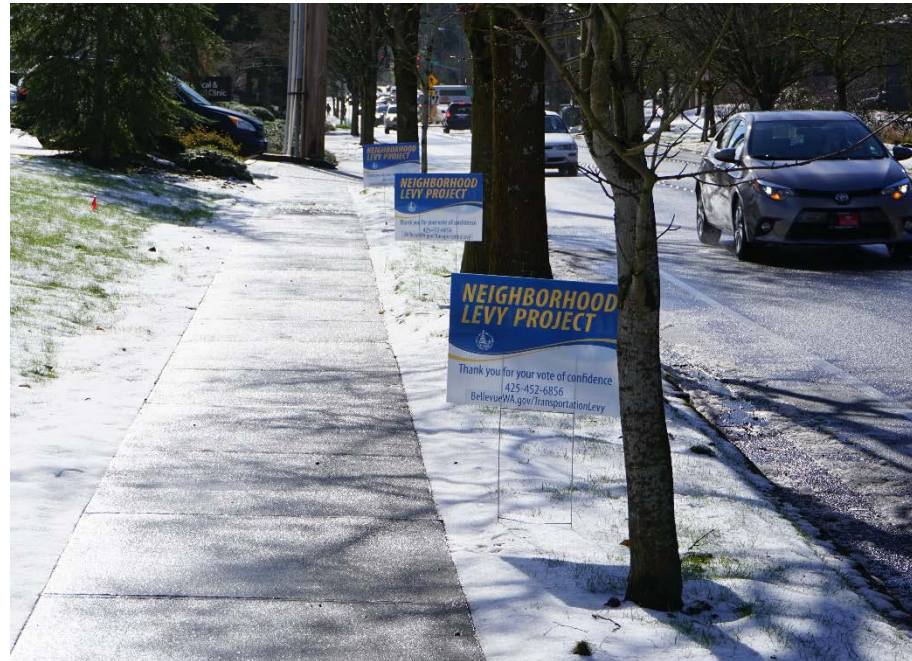
Flashing yellow beacons are some of the most effective ways to reduce the speed of traffic near schools. On school days, the lights will flash 40 minutes in the morning and 40 minutes in the afternoon to notify motorists that students may be walking in the area.

We anticipate the installation of these signs to be complete by the end of September. During construction, please use caution and obey all traffic control signing in the area. Once the beacons are installed and operational, additional police enforcement will follow. Fines are double in school zones when the beacons are flashing.

This project is fully funded by the 2016 voter-approved Neighborhood Safety, Connectivity, and Congestion Levy. More information can be found at: www.bellevuewa.gov/transportationlevy.

For more information, contact:
Rebecca Rodni, Neighborhood Traffic Safety Services Project Manager at rrodni@bellevuewa.gov or (425) 452-6160

정보 Information 資料
 जानकारी जानकारी
 సమాచారం సమాచారం
 معلومات معلومات
 情報 (じょうほう) Thông Tin
 425-452-6800 Información
 Available in Other Languages



bellevuewa.gov/transportationlevy

Levy Communications

- Public engagement (e.g. open houses)
- Annual Accountability Report
- Interactive map (story board)
- Program fact sheet

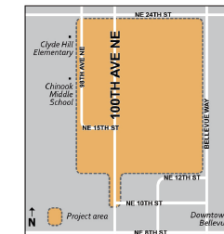


NEIGHBORHOOD LEVY PROJECT 100th Ave NE and Vicinity Complete Streets Project

YOU'RE INVITED

PROJECT OPEN HOUSE
Wednesday,
February 28, 2018
6:30–8:00 PM
Chinook Middle School Library
2001 98th Ave NE

Your input is important to us!



City of Bellevue invites you to review potential design changes on 100th Ave NE between NE 24th St and NE 10th St, along with priority side streets, intended to make it easier and more comfortable to walk, bike, take transit, and drive.

Chinese interpreters will be available.



FOR MORE INFORMATION:
www.bellevuewa.gov/100thavecompletestreets

Summary

- 2018 will be a busy construction year
- Project list through 2020 developed by mid-2018
- List will be shared with Council in summer 2018

Purpose of tonight's presentation is for information only; no action or direction is sought

Summary

- Website is a great source for project information
bellevuewa.gov/transportationlevy
- Or contact staff:
 - Marie Jensen, 425-452-2064, mjensen@bellevuewa.gov
 - John Murphy, 425-452-6967, jmurphy@bellevuewa.gov
 - Chris Long, 425-452-6013, clong@bellevuewa.gov

Purpose of tonight's presentation is for information only; no action or direction is sought