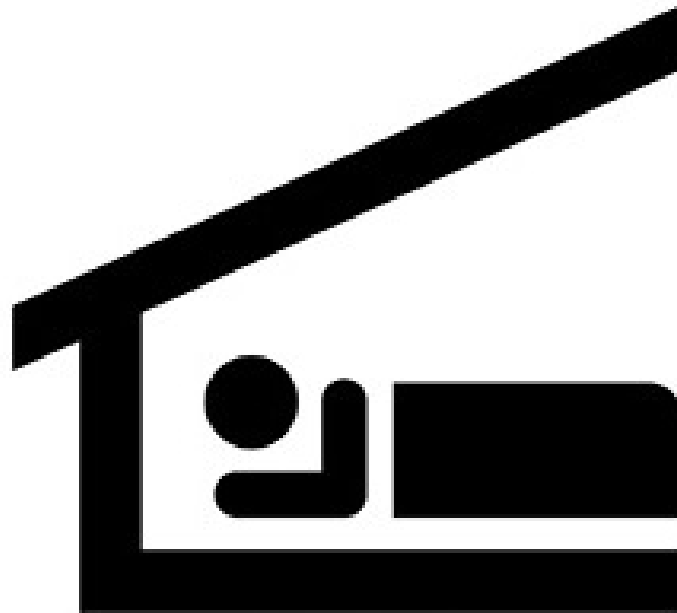


# Permanent Homeless Shelter Permitting Amendments to the Land Use Code (LUC)



Carol Helland, Code & Policy Director  
*Development Services Department*

Kate Berens, Deputy City Manager  
Nancy LaCombe, Assistant Director  
*City Manager's Office*

**MARCH 5, 2018**

# Site Information Report

Attachment B

## Site Information Report

Compiled February 2016 through June 2017

For

Eastside Men's Shelter and  
Supportive Housing Project



March 2018

- Update requested -  
February 12<sup>th</sup> Study Session
- Information is not intended  
to lead to a site choice

# Tonight's Topic – Homeless Shelter Permitting

1. LUCA Outreach and Engagement Strategy
2. LUCA Processing Schedule

# Public Engagement in the City's Shelter Permitting Response



2016 – 2018

## Policy Framework

Community Input  
Due Diligence Report  
Best Practices  
Citywide Survey

2017 – 2018

## Land Use Code Amendments

Use Requirements, Definitions,  
Development Standards, Design  
Guidelines and Facility Operations

## Shelter Permitting

City Approval Process

# Public Engagement for Development of Draft LUCA

- Comprehensive review of information compiled to-date
  - Individual and Community Group Feedback
  - City Due Diligence Report
  - Best Practice Research

<https://www.bellevuewa.gov/city-government/departments/community-services/human-services/homelessness-in-bellevue/>

Homelessness



- Citywide Survey - March 7<sup>th</sup> through March 21<sup>st</sup>
- Community Workshop - April 3<sup>rd</sup> from 5:30 – 7:30pm
  - Share public input from the citywide survey
  - Present initial LUCA framework

# Code Review with the City Council

- Present Draft LUCA and public engagement input
- Review policy topics (2-3 topics/meeting)
- Anticipated issues of importance to stakeholders
  - Location of shelters and proximity to other uses
  - Definitions
  - Submittal Requirements
  - City Review Process
  - Standards, Use Requirements, Design Guidelines
  - Facility Operations (Good Neighbor Plan)

# Code Amendment - Next Steps

- Request of Council Tonight:
  - Endorse the LUCA Drafting and Review Schedule
- Following Council Endorsement, staff will:
  - Launch the Outreach and Engagement Process
  - Broadly publicize opportunities to engage:
    - Website postings
    - Social media releases
    - Information sharing

# Permanent Homeless Shelter Permitting Amendments to the Land Use Code (LUC)



## QUESTIONS & FEEDBACK

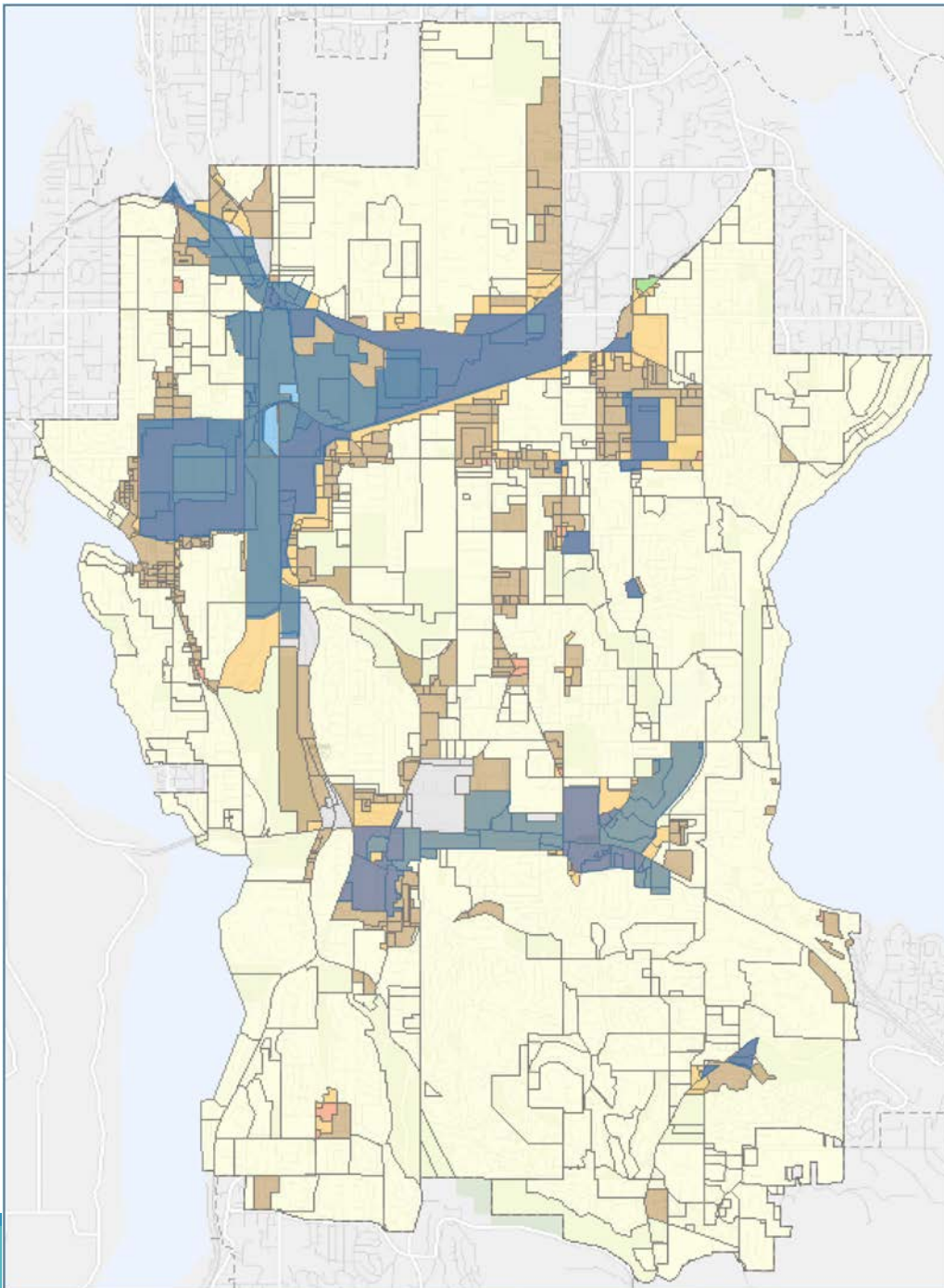
<https://www.bellevuewa.gov/city-government/departments/community-services/human-services/homelessness-in-bellevue/>





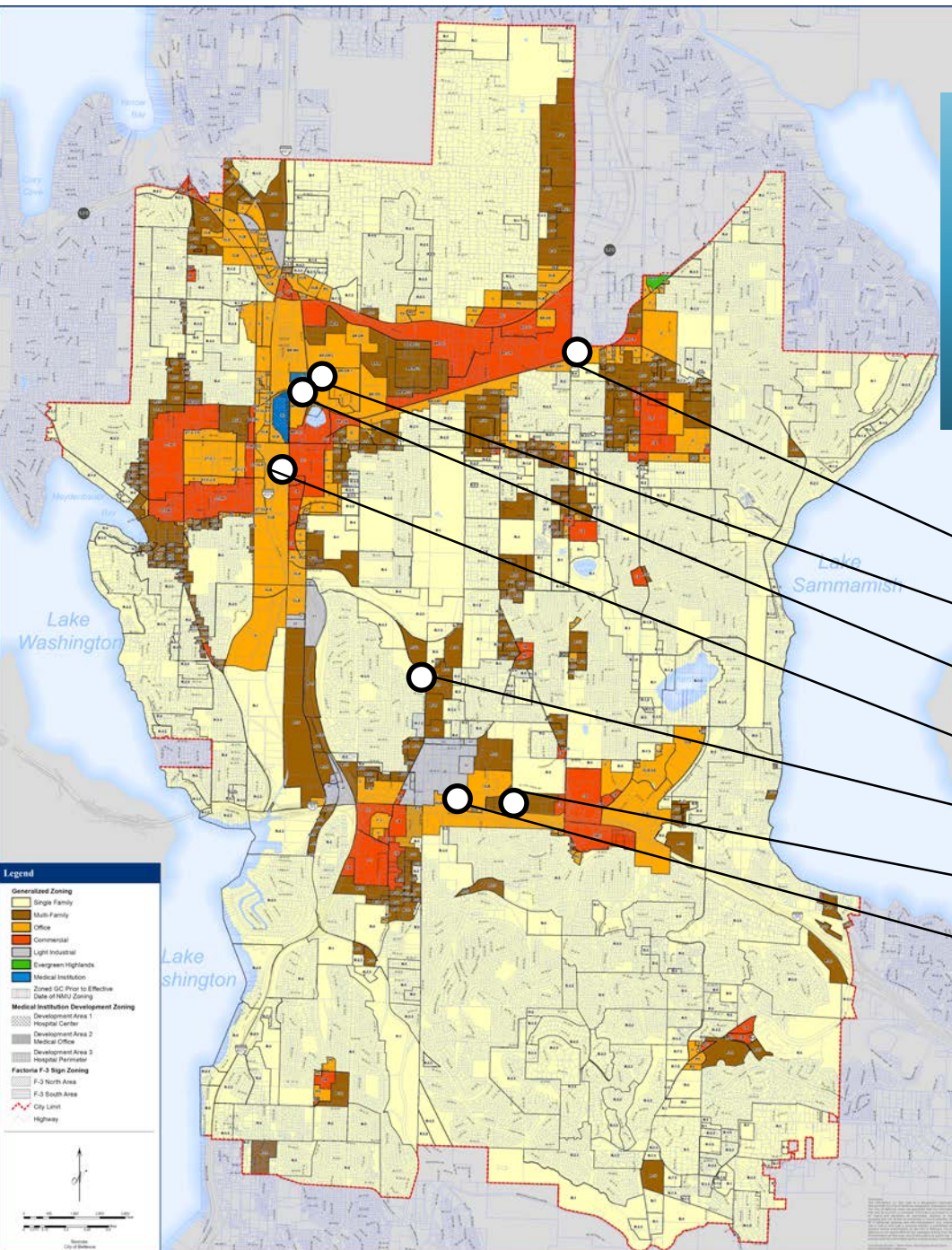
## Land Use Districts Where Hotel and Motel Use Permitted (including Shelters)

- OLB
- CB
- Factoria-1
- Factoria-2
- Factoria-3
- All Downtown
- All BelRed
  - Except BR-R, BR-ORT, O, PO



# Publicly Owned Sites Evaluated 2016-2017

- Old Fire Station No. 3
- Sound Transit OMF East
- East of PSE Substation
- Lincoln Center
- Richards Road Residential Lot
- King County Public Health
- King County Adjacent Transfer Facility



# Site Information Report

- Update requested - February 12<sup>th</sup> Study Session
- Information is not intended to lead to a site choice
- Summary of Information Collected to-date
  - 7 Sites evaluated between 2016-2017
  - Zoning
  - Size
  - Opportunities and Constraints
  - Ownership