



Adjusting the municipal boundary between Bellevue and Kirkland within rights-of-way (RCW 35.13.310)

Bellevue City Council Study Session
February 6, 2017

Nicholas Matz AICP Senior Planner PCD



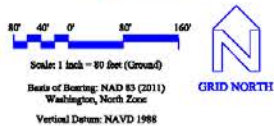
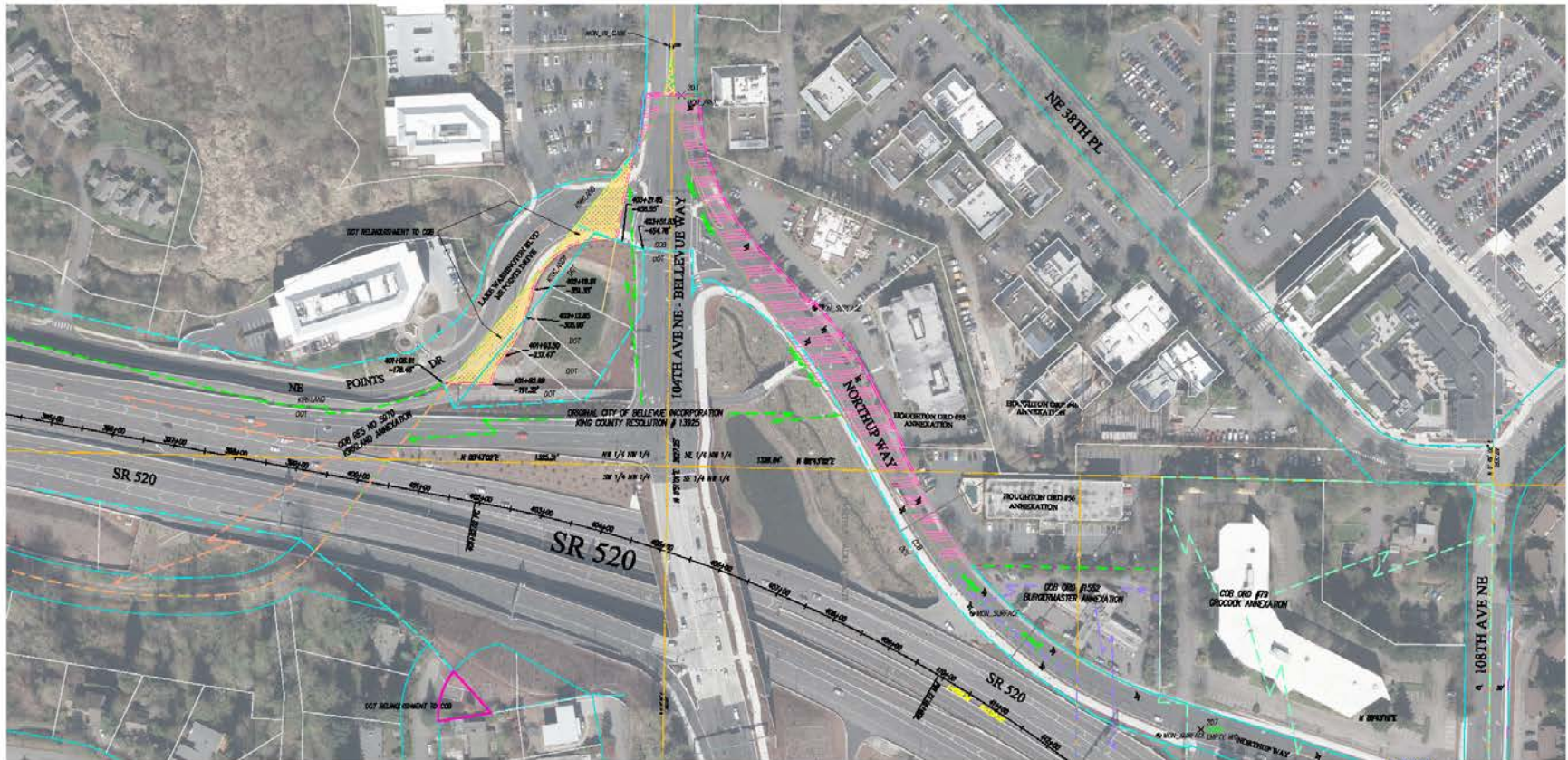
Adjusting the municipal boundary

Tonight:

How to adjust the municipal boundary between Bellevue and Kirkland within the ROW of various streets in the area, and why we are doing it.

Ask:

Staff is seeking direction on whether to return on February 21 Consent with a resolution for action directing the City to enter into an agreement adjusting the boundary. The agreement is sufficient to cause the adjustment to occur.



- LEGEND:**
- Existing Right of Way
 - Existing Bellevue / Kirkland Bdry
 - Proposed Bellevue Kirkland Bdry
 - Original Bellevue Incorporation
 - Bellevue Annexation Ord # 779
 - Bellevue Annexation Ord # 1552
 - Bellevue Annexation Ord # 5970
 - Kirkland to Bellevue Proposed 43,576 Sq Ft
 - Bellevue to Kirkland Proposed 12,971 Sq Ft

NO.	DATE	BY	APPR.	REVISIONS

EXHIBIT MAP

BELLEVUE / KIRKLAND BOUNDARY



BOUNDARY ADJUSTMENT
 situated in
 N 1/2 NW 1/4 Section 20, T25N, R5E, W.M.
 King County, Washington

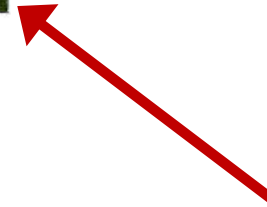
PREPARED BY: S. DRAKE	DATE: 06/29/2016
WORK ORDER NO: 16069	SHEET: 1 of 1

Revised: January 10, 2016, 10:00AM

Regional Transportation Coordination

Policies that address coordination with other jurisdictions and consistency with regional transportation plans.

- TR-40.** Work actively and cooperatively with other Eastside jurisdictions and regional and state agencies to plan, design, fund and construct regional transportation projects that support the city's Comprehensive Plan.
- TR-41.** Develop the transportation system in a manner that supports the regional land use and transportation vision adopted in VISION 2040, Transportation 2040 and the Countywide Planning policies for King County.
- TR-42.** Work with other Eastside Transportation Program (ETP) participants to identify and implement high priority transportation investments.
- TR-43.** Utilize the Eastside Transportation Program participating jurisdictions and agencies as a forum for the planning and programming of transportation system improvements that involve multiple jurisdictions. Specific activities may include developing a timetable for implementation, identifying funding sources for projects by jurisdiction, and reporting on project funding status and completion dates.
- TR-44.** Inform, consult with, and otherwise involve other affected jurisdictions in the city's transportation planning efforts.
- TR-45.** Develop and implement inter-local agreements for cooperative solutions for mutual land use and transportation concerns.
- TR-46.** Require development within Bellevue to include mitigation for significant transportation impacts on other jurisdictions, and work with other jurisdictions to ensure that development within their borders includes mitigation for significant transportation impacts on Bellevue.
- TR-47.** Provide an arterial system, and encourage the state to provide a freeway system, that together support local and regional mobility and land use plans.





Adjusting the municipal boundary between Bellevue and Kirkland within rights-of-way (RCW 35.13.310)

Bellevue City Council Study Session
February 6, 2017