

EASTSIDE MEN'S SHELTER AND SUPPORTIVE HOUSING

A partnership between City of
Bellevue, King County, King County Public Health, Congregations for
the Homeless and Imagine Housing.

Bellevue City Council – April 3, 2017

Presenting:

Kate Berens, Deputy City Manager

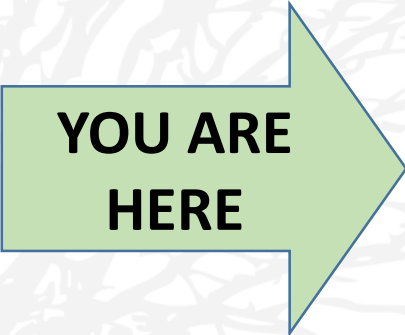
Dan Stroh, Planning Director

Mike McCormick Huentelman, Neighborhood Outreach Manager

Steve Roberts, Congregations for the Homeless

Project Timeline

	Process Step
2014	Policy Direction: Council Vision
2015	Site Investigation
2016	Joint Letter of Agreement Public Outreach Process Conceptual Design
2017	Decision on KC Public Health site Permitting Fundraising
2018	Final Design & Construction
2019-20	Opening



**YOU ARE
HERE**

Proposed Men's Shelter & Supportive Housing Program

Congregations for the Homeless

- Emergency Shelter - 100 beds
- Drop-in Day Center & Cafeteria – 125 seats
- Complementary associated services on-site

Medical and dental services

Housing placement

Case management

Mental Health services

Employment support

DSHS benefit enrollment

Addiction recovery

Legal assistance

Imagine Housing

- Service-enriched affordable housing – 50-60 units
- Approx. 50% for low-income households (all genders)
- 50% set-aside for individuals exiting homelessness

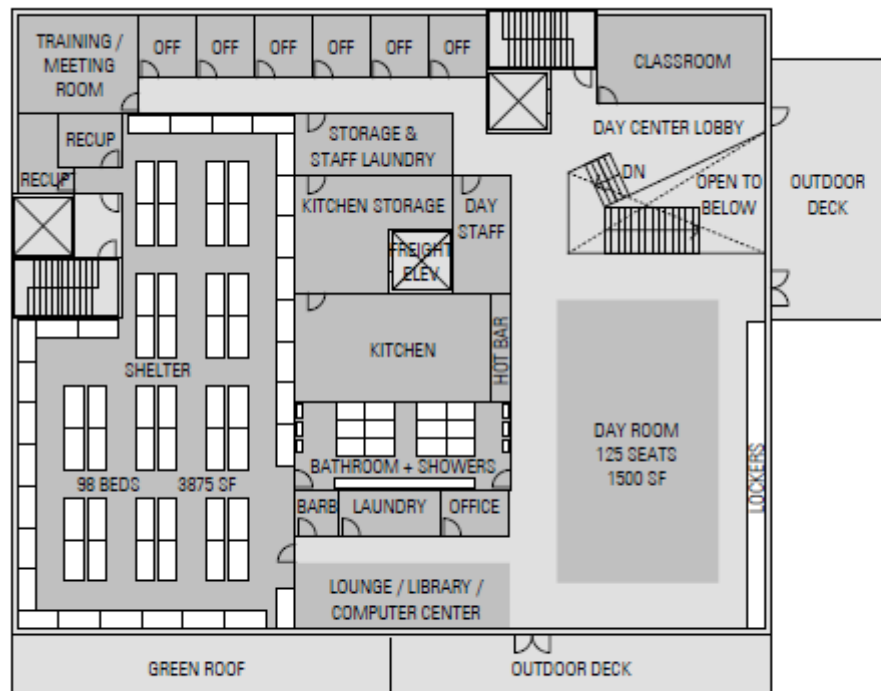
Due Diligence Reports

- Project and Program Design
- Community Feedback
- Best Practices
- Surrounding Area Impacts and Preliminary Mitigation Options

Shelter and Day Services Center

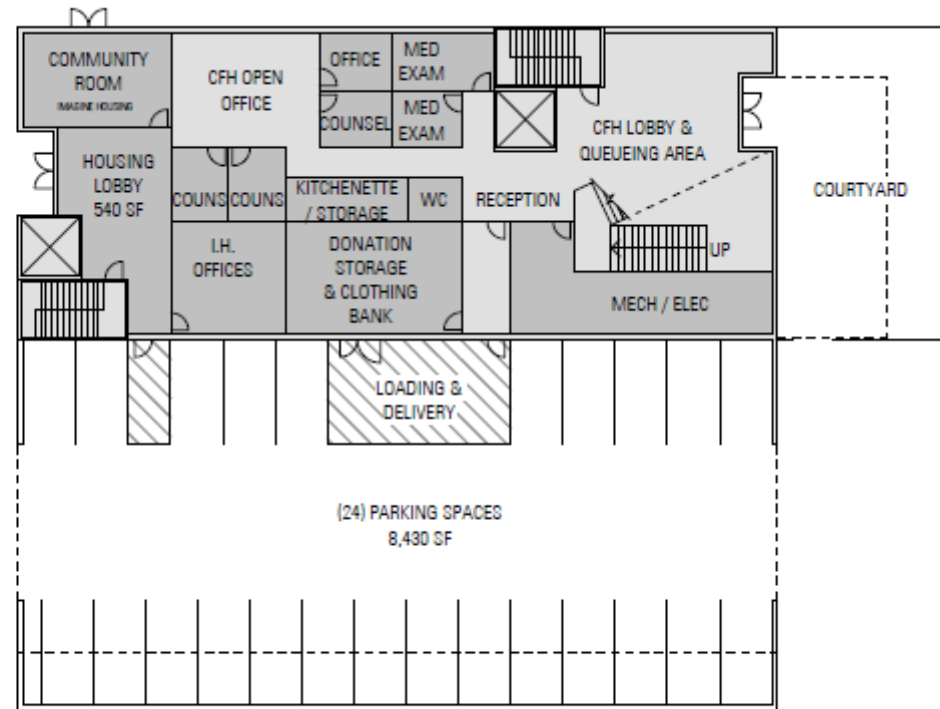


Shelter and Day Services Center



 **schemata**
workshop

2ND FLOOR



1ST FLOOR



CFH

CONGREGATIONS FOR THE HOMELESS
from homelessness to housing, one man at a time

Low-barrier shelter operations

WHAT IS A “LOW-BARRIER” SHELTER?

An emergency shelter designed to protect homeless from severe weather & connect them with services.

Low-barrier generally means the facility doesn't turn anyone away. The goal is to protect individuals from the elements, connect them with services and put them on the path towards sustainability. Bellevue, in collaboration with Congregations for the Homeless, has been operating a similar low-barrier shelter for almost a decade.



Quick Facts



Operating in Bellevue neighborhoods since 2008



Routine checks for sex offenders



Sets firm behavior standards



Collaborative relationship with Bellevue Police



Rules ban alcohol, drug use



Not the same as a safe injection site

Community Feedback

Favorable

- Addressing Eastside need
- CFH and Imagine Housing track record
- Potential community partnerships
- Proximity to transit, support services

Concerns

- 'Low Barrier' shelter
- Crime and public safety
- Frustration with public process
- Proximity to residential, Park&Ride, Bellevue College
- Long-term accountability

Best Practice Site Visits



Key Take-aways

- Successful project needs to meet local needs, and be driven by local values
- Facility design is crucial
- Important to build relationships with clients
- Value in strong and active connections with law enforcement
- Need for ongoing and sustained good neighbor relationships
- Importance of performance measures, accountability

Preliminary Mitigation Concepts

Design

- Involve Crime Prevention through Environmental Design (CPTED) consultant in building and site design

Security Coordination

- Pursue public safety partnerships with Bellevue College, Transit Police presence at Eastgate Park & Ride, nearby businesses
- Address spillover potential – don't let unpermitted camping or car residency take root around the shelter

Uses

- Ensure area uses are appropriate; e.g. Consider code amendment to prohibit safe injection sites

Accountability


- Set performance standards and monitor—ensure accountability

Good Neighbors

- Develop a community process to ensure good neighbor relationships

Council Discussion

- No action requested tonight
- For April 17:
 - Should we continue to move forward with a partnership at Eastgate Public Health site as outlined in the Letter of Agreement?
 - What would the Council need to see in a successful negotiation?
 - Initial direction requested in order to prepare for April 17



EASTSIDE MEN'S SHELTER AND SUPPORTIVE HOUSING

A partnership between City of Bellevue, King County, King County Public Health, Congregations for the Homeless and Imagine Housing.

There will be multiple ways to stay engaged and participate:

For more information or to schedule a private stakeholder briefing please contact:

Mike McCormick Huentelman
Neighborhood Outreach
Manager, City of Bellevue
425-452-4089
mmhuent@bellevuewa.gov

Stay informed and sign up for alerts:
<http://www.bellevuewa.gov/eastside-mens-shelter.htm>

For information on Eastside Men's Shelter programs and operations please contact:

Steve Roberts
Managing Director
Congregations for the Homeless
206-295-7803
steve@cforhomeless.org