

EASTSIDE MEN'S SHELTER AND SUPPORTIVE HOUSING

A partnership between City of
Bellevue, King County, King County Public Health, Congregations for
the Homeless and Imagine Housing.

Bellevue City Council – April 17, 2017

Presenting:

Kate Berens, Deputy City Manager

Dan Stroh, Planning Director

Steve Mylett, Police Chief

Camron Parker, Senior Planner

Information Requested on April 3

- Capital and Operating Costs
- Accountability of Shelter Operations
- Pathway to Stable Housing
- Regulatory Controls, Enforcement Options & Long-term Monitoring
- Additional Alternate Sites
- Advisory Committee Options

Tonight's Logistics

- Study Session
 - Staff Presentation
 - Council Questions and Discussion
- Regular Session
 - Expanded Public Comment
 - Continued Council Discussion and Action

Homelessness in Bellevue

- 1,200 homeless persons served in Eastside shelters last year
 - 139 men in year-round & 571 men in winter shelter
- 245 people sleeping outside in 2016 Eastside One Night Count of unsheltered individuals
- 252 children enrolled in Bellevue School District's homeless student program
- Bellevue Police and Park Rangers report:
 - Average of 10 unpermitted encampments in open space or rights-of-way
 - 50 vehicles being used for housing in 2016, up from 30 in 2015

Homelessness Response in Bellevue

- Commitment to compassion and pragmatism
- Focus on transitioning individuals out of homelessness
- Coordination with Eastside cities
- Leverages partnerships with local organizations to serve the local need of the community
- Commitment to maintain the public realm and public safety
- Enforcement of current codes to address unpermitted encampments and aggressive panhandling

Council's Prior Shelter Actions

- 2008 – present: City funding for winter shelter
- 2014-15 Council Vision Priorities
- 2015 ARCH shelter funding approved (no site)
- 2015 Interest Statement on Homelessness
- 2015 Updated Comprehensive Plan Policies
- 2016-17 Council Vision Priorities

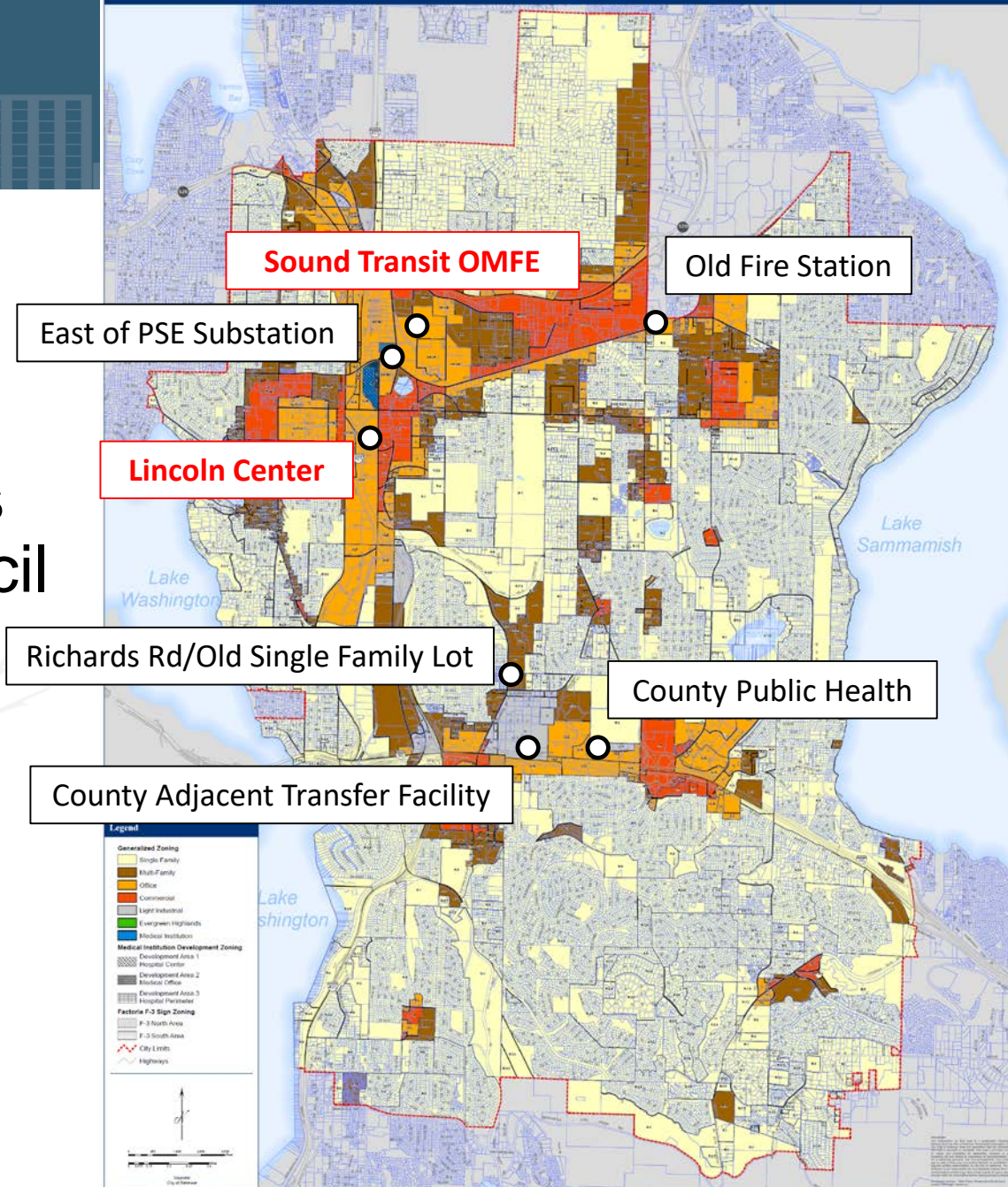
Working with regional partners, establish an eastside permanent winter homeless shelter to be ready for the winter of 2018/2019

- 2016 Letter of Agreement with King County

Sites Explored

- Five sites originally screened
- Two additional sites requested by Council
 - Lincoln Center
 - Sound Transit OMFE

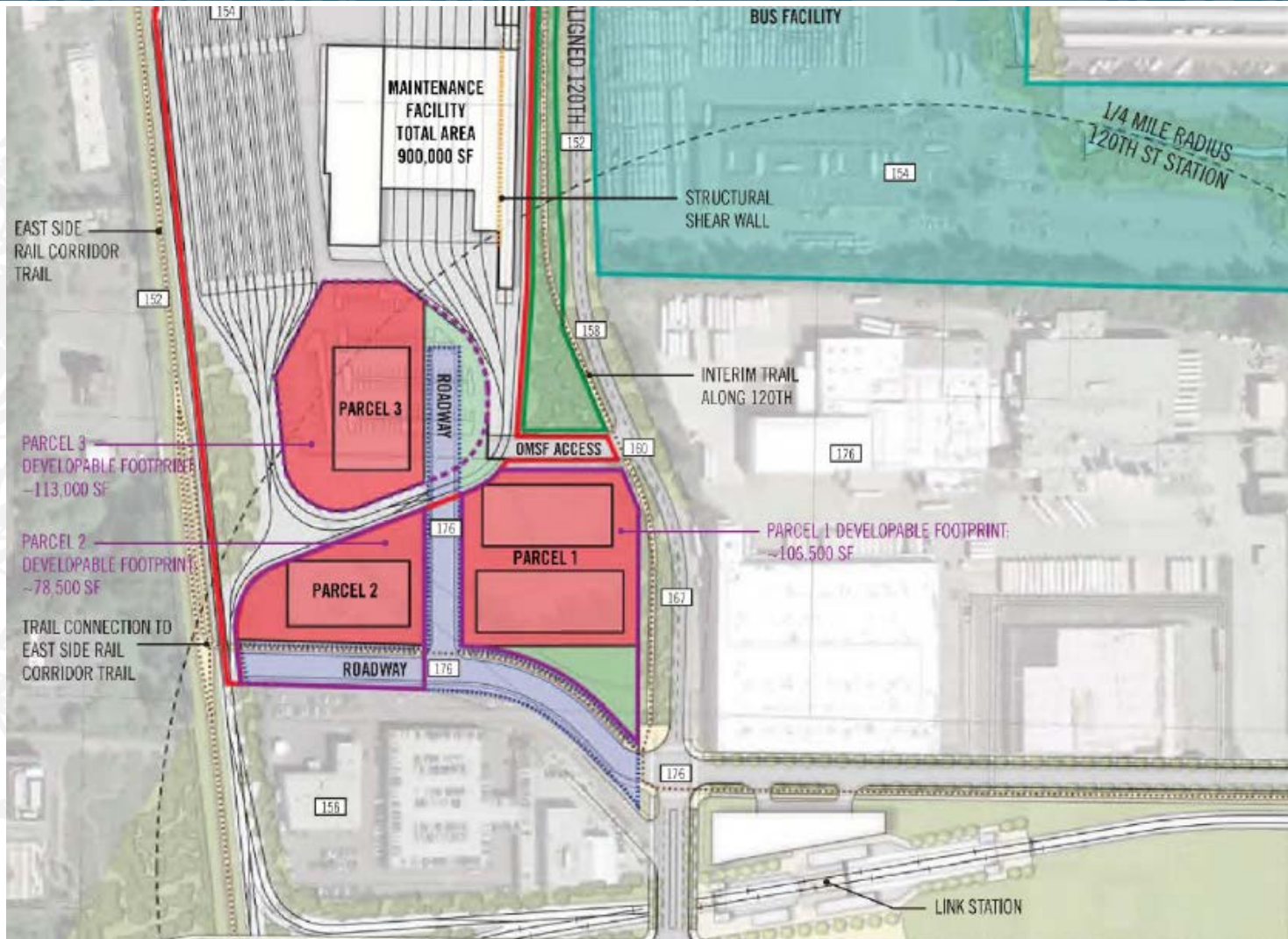
Generalized Zoning



Lincoln Center



Sound Transit OMFE



Joint Letter of Agreement

- Recognizes mutual interests in developing a partnership to accommodate a shelter, supportive services and permanent housing
- Not a final decision, but intent to work together
- City, County and development team to negotiate agreement for use of property
- City to process code amendments consistent with adopted Eastgate Comprehensive Plan
- City, ARCH, County and development partner to cooperate on funding and program strategy
- City to lead community outreach efforts

Eastgate Public Health Site



Proposed Men's Shelter & Supportive Housing Program

Congregations for the Homeless

- Emergency Shelter - 100 beds
- Drop-in Day Center & Cafeteria – 125 seats
- Complementary associated services on-site

Medical and dental services

Housing placement

Case management

Mental Health services

Employment support

DSHS benefit enrollment

Addiction recovery

Legal assistance

Imagine Housing

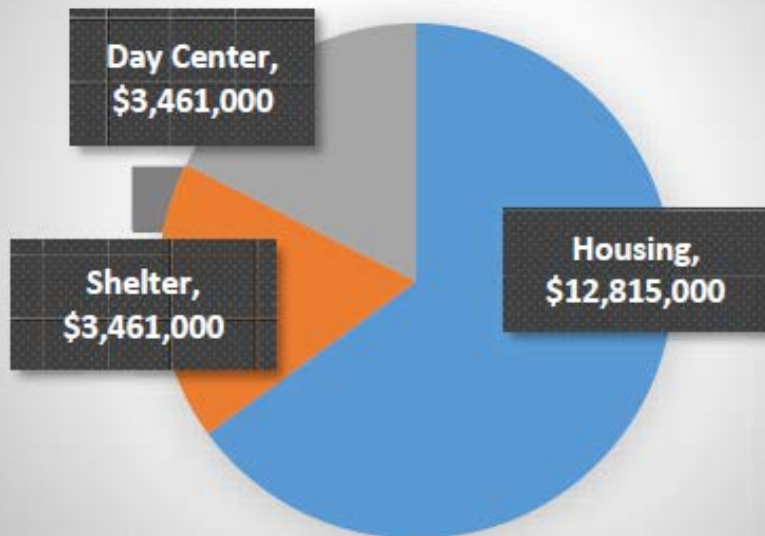
- Service-enriched affordable housing – 50-60 units
- Approx. 50% for low-income households (all genders)
- 50% set-aside for individuals exiting homelessness

Shelter and Day Services Center

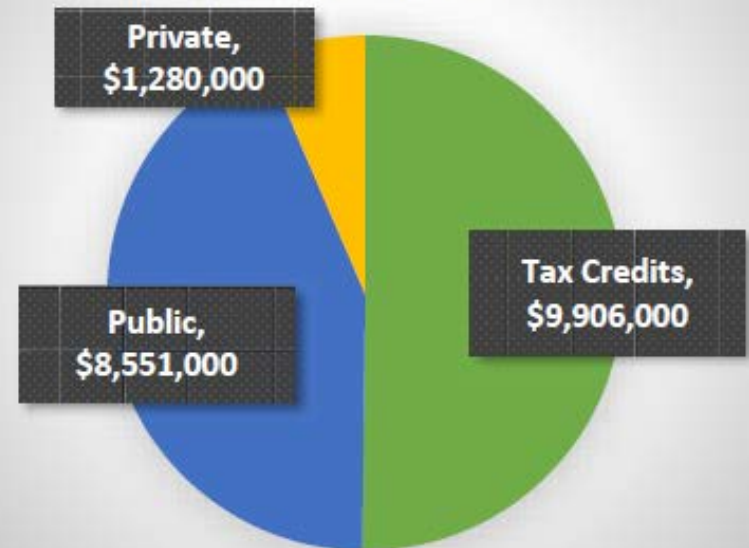


Capital & Operating Cost

**Eastgate Emergency Shelter and Housing
Project Costs**



**Eastgate Emergency Shelter and Housing
Funding Sources**



Pathway to Stable Housing

- Eastside Regional Effort to Establish a Pathway
- **Outreach and Referral**
 - CFH and Friends of Youth Street Outreach
 - 211 Community Information Line
- **Shelters and Day Services Centers**
 - CFH, Lifewire, The Sophia Way, Catholic Community Services, Friends of Youth
- **Access to Supportive Housing**
 - Catholic Community Services – Coordinated Entry Regional Access Point
 - Imagine Housing, CFH, The Sophia Way, Hopelink

Safety and Security: Bellevue Police Approach

BPD Mission: Reduce Crime, Reduce the Fear of Crime, and Enhance the Quality of Life for all who call Bellevue home

- Engage in homelessness issues through city
- Have served past winter shelters and day centers within existing resources
- Involved closely with this proposed project from the start

Safety and Security: Eastgate Site Observations

- Existing security in place with all neighboring properties
- Existing activity in the hillside area
 - Recommend addition of lights and call box on trail to Bellevue College (regardless of shelter project)
 - Bike Patrol
 - Recommend changes to vegetation
- Other Eastgate changes to consider:
 - Bellevue College Residential Program
 - New uses in Eastgate Land Use Code Amendment
- Continue working with CFH and community to plan for public safety

Proposed Advisory Committee

- Facilitated by CFH and Imagine Housing
- Broad spectrum of involvement
 - Immediate neighboring institutions and businesses
 - Neighborhood residents
 - Faith community representatives
 - City of Bellevue – Police and Human Services
- Two phases
 - Design: collaborative input on design and mitigation
 - Operations: establish protocols for ongoing communication, monitoring and performance measures

Council Action: Option 1

Confirm Public Health Site

- **Direct concurrent actions:**
 - Require and participate in formation of project advisory committee
 - Adding Development Agreement for shelter uses to Eastgate LUCA
 - Prohibit safe injection sites in Eastgate LUCA and add citywide prohibition to code work plan
 - Prepare options for stronger vehicle parking enforcement
 - Undertake public education campaign on panhandling

Council Action: Options 2 & 3

- Option 2: Decline to proceed with Letter of Agreement and direct staff to new approach
- Option 3: Suspend the City's participation in site investigations for the project

Council Discussion

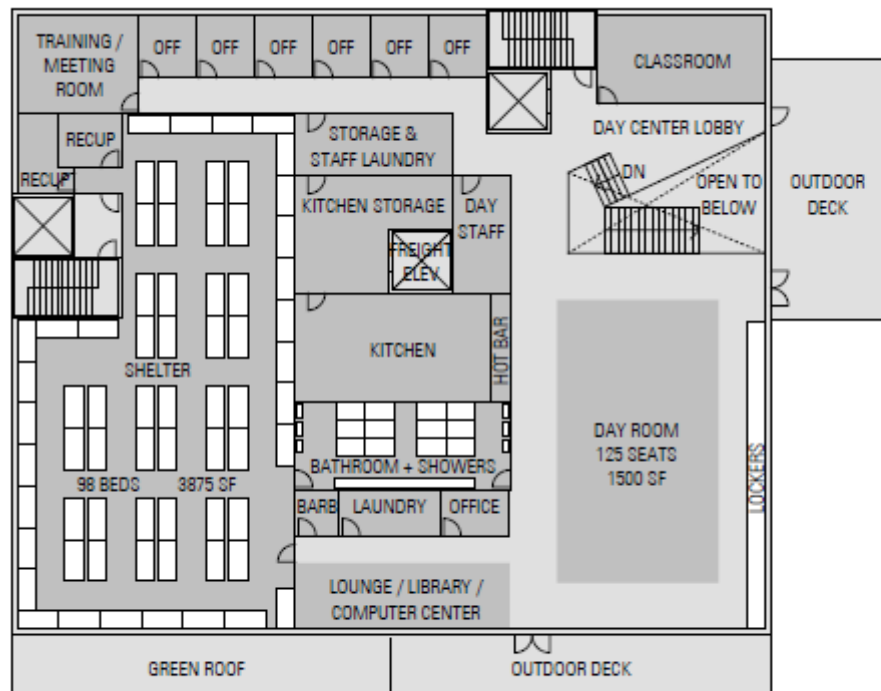


EASTSIDE MEN'S SHELTER AND SUPPORTIVE HOUSING

A partnership between City of
Bellevue, King County, King County Public Health, Congregations for
the Homeless and Imagine Housing.

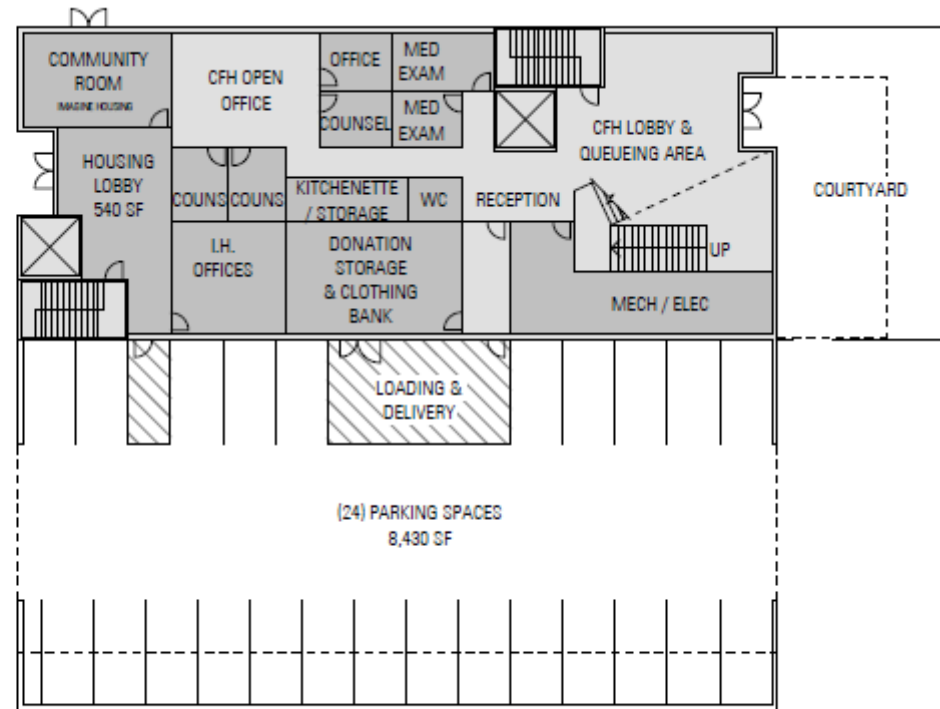


Shelter and Day Services Center



 **schemata**
workshop

2ND FLOOR



1ST FLOOR

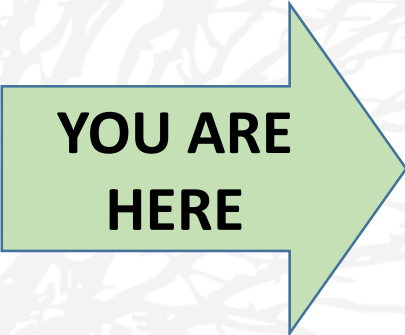


CFH

CONGREGATIONS FOR THE HOMELESS
from homelessness to housing, one man at a time

Project Timeline

	Process Step
2014	Policy Direction: Council Vision
2015	Site Investigation
2016	Joint Letter of Agreement Public Outreach Process Conceptual Design
2017-18	Decision on KC Public Health site Permit Application (Dev. Agreement) Fundraising
2018-19	Final Design & Construction
2019-20	Opening



**YOU ARE
HERE**

Preliminary Mitigation Concepts

Design

- Involve Crime Prevention through Environmental Design (CPTED) consultant in building and site design

Security Coordination

- Pursue public safety partnerships with Bellevue College, Transit Police presence at Eastgate Park & Ride, nearby businesses
- Address spillover potential – don't let unpermitted camping or car residency take root around the shelter

Uses

- Ensure area uses are appropriate; e.g. Consider code amendment to prohibit safe injection sites

Accountability

- Set performance standards and monitor—ensure accountability

Good Neighbors

- Develop a community process to ensure good neighbor relationships