

EASTSIDE MEN'S SHELTER AND SUPPORTIVE HOUSING

A partnership between City of
Bellevue, King County, King County Public Health, Congregations for
the Homeless and Imagine Housing.

Bellevue City Council – June 5, 2017

Presenting:

Kate Berens, Deputy City Manager

Dan Stroh, Planning Director

Camron Parker, Senior Planner

April 17 Council Action

Approve Option 1 as presented by staff (below), with a 45-day exploration period on the status of the Lincoln Center property and the OMFE property.

Option 1: Confirm the King County Eastgate Public Health Center site as suitable for the Eastside Men's Shelter and Supportive Housing Project and direct staff to continue project development work with the non-profit development partners and King County consistent with the recommendations detailed [in the April 17 Agenda Memo].

Further direct staff to:

- Modify the Eastgate Land Use Code Amendment to:
 - require a Development Agreement rather than a Conditional Use Permit
 - prohibit safe injection sites.
- Add a code amendment work program to prohibit safe injection sites citywide.
- Prepare options for stronger vehicle parking enforcement.
- Prepare public information and education materials.
- Require formation of an advisory committee

Meeting Logistics

- Staff presentation on exploratory information
- Council discussion and direction
- Eastgate site next steps (if needed)

Proposed Men's Shelter & Supportive Housing Program

Congregations for the Homeless

- Emergency Shelter - 100 beds
- Drop-in Day Center & Cafeteria – 125 seats
- Complementary associated services on-site

Medical and dental services

Housing placement

Case management

Mental Health services

Employment support

DSHS benefit enrollment

Addiction recovery

Legal assistance

Imagine Housing

- Service-enriched affordable housing – 50-60 units
- Approx. 50% for low-income households (all genders)
- 50% set-aside for individuals exiting homelessness

Shelter and Day Services Center



Council's Prior Shelter Actions

- 2008 – present: City funding for winter shelter
- 2014-15 Council Vision Priorities
- 2015 ARCH shelter funding approved (no site)
- 2015 Interest Statement on Homelessness
- 2015 Updated Comprehensive Plan Policies
- 2016-17 Council Vision Priorities

Working with regional partners, establish an eastside permanent winter homeless shelter to be ready for the winter of 2018/2019

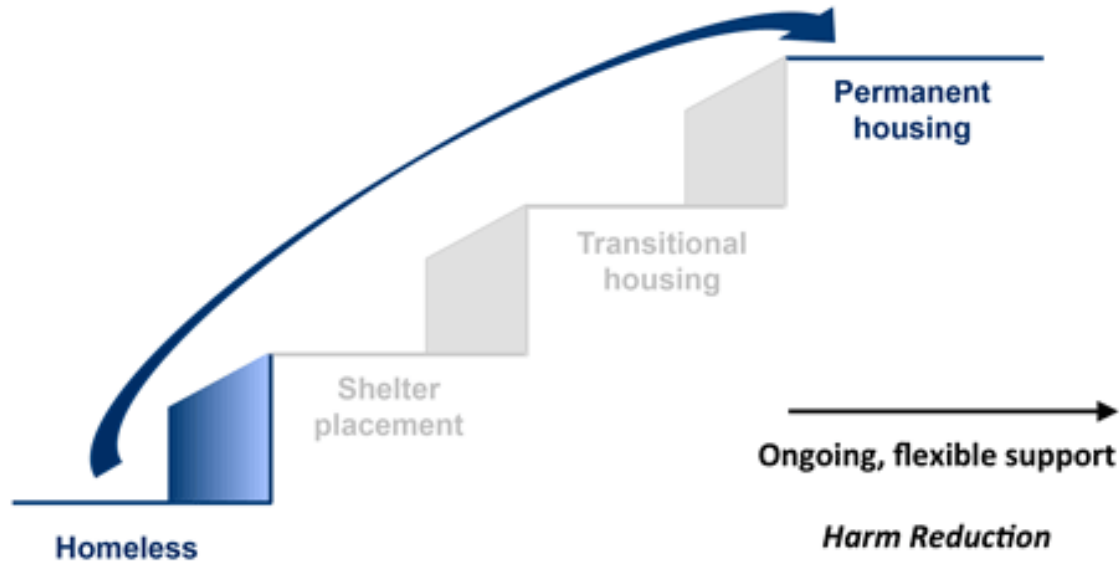
- 2016 Letter of Agreement with King County

Eastgate Site Investigation

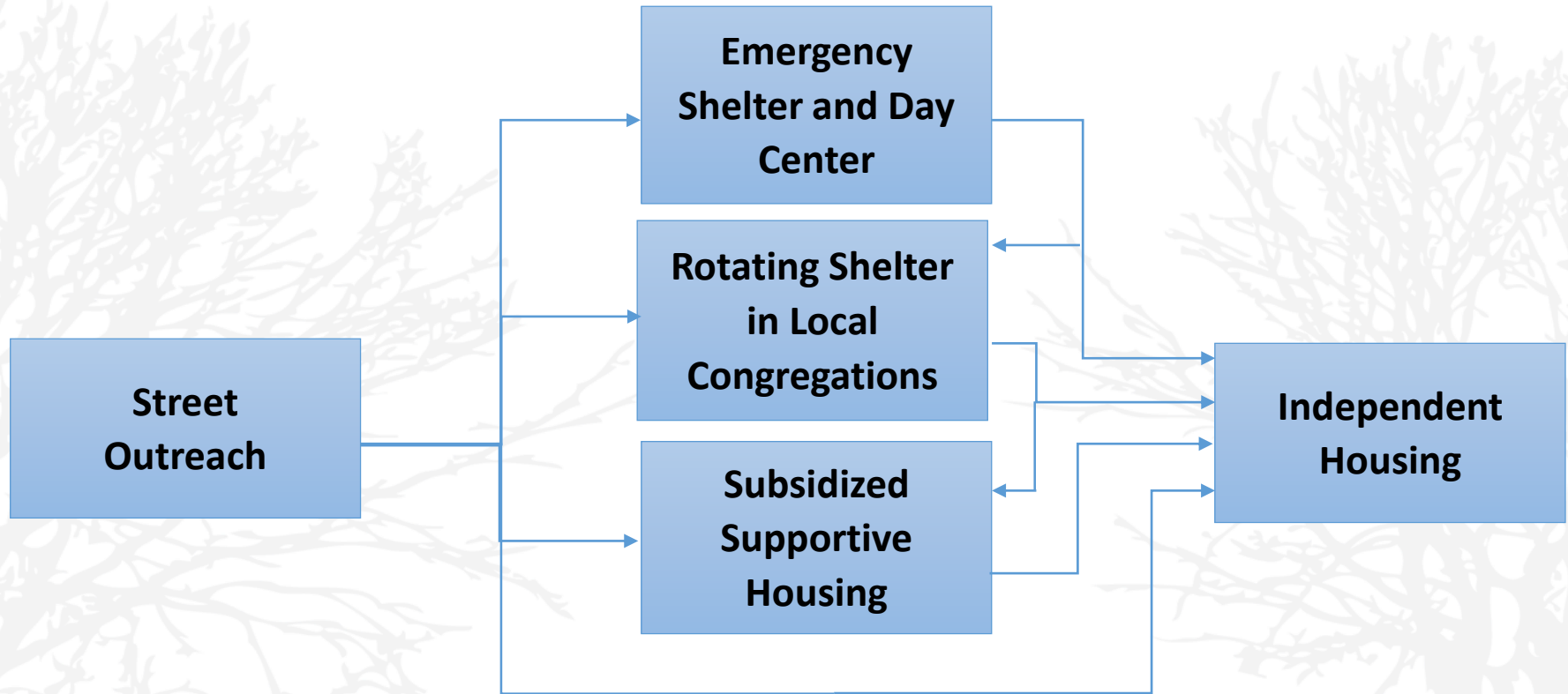
	Council Meetings
August 1, 2016	Directed City Manager to sign Joint Letter of Agreement with King County to investigate Eastgate Public Health site
November 29	Initial feedback from Sept. and Oct. community meetings and project information
April 3, 2017	Due Diligence reports
April 17	Additional project information, overviews of Lincoln Center and OMF East locations and Council direction
May 1	Exploratory criteria discussion
June 5	Additional Eastgate information and exploratory site results

Housing First System Change

Housing First approach

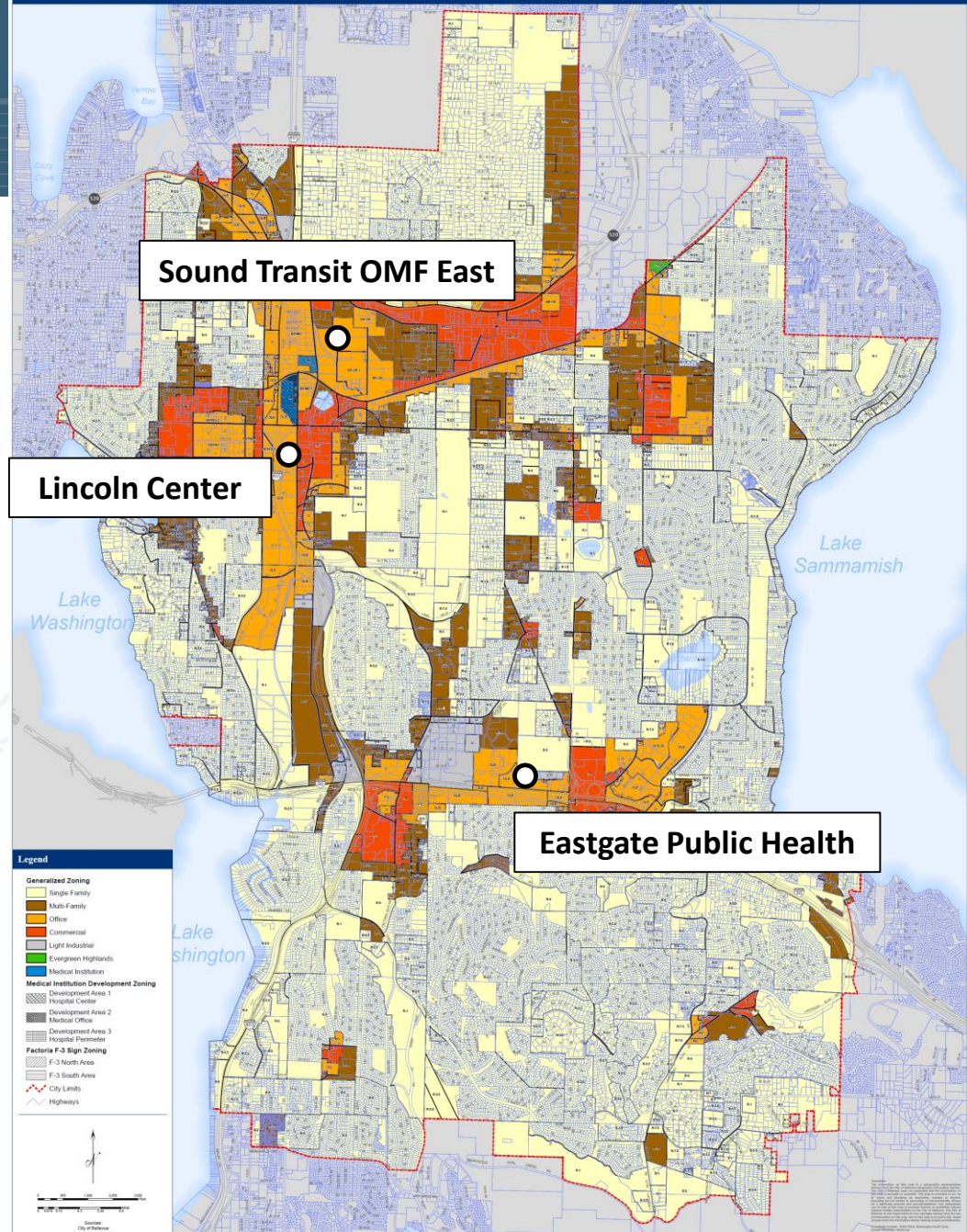


Multiple Paths to Independent Housing



Sites Locations

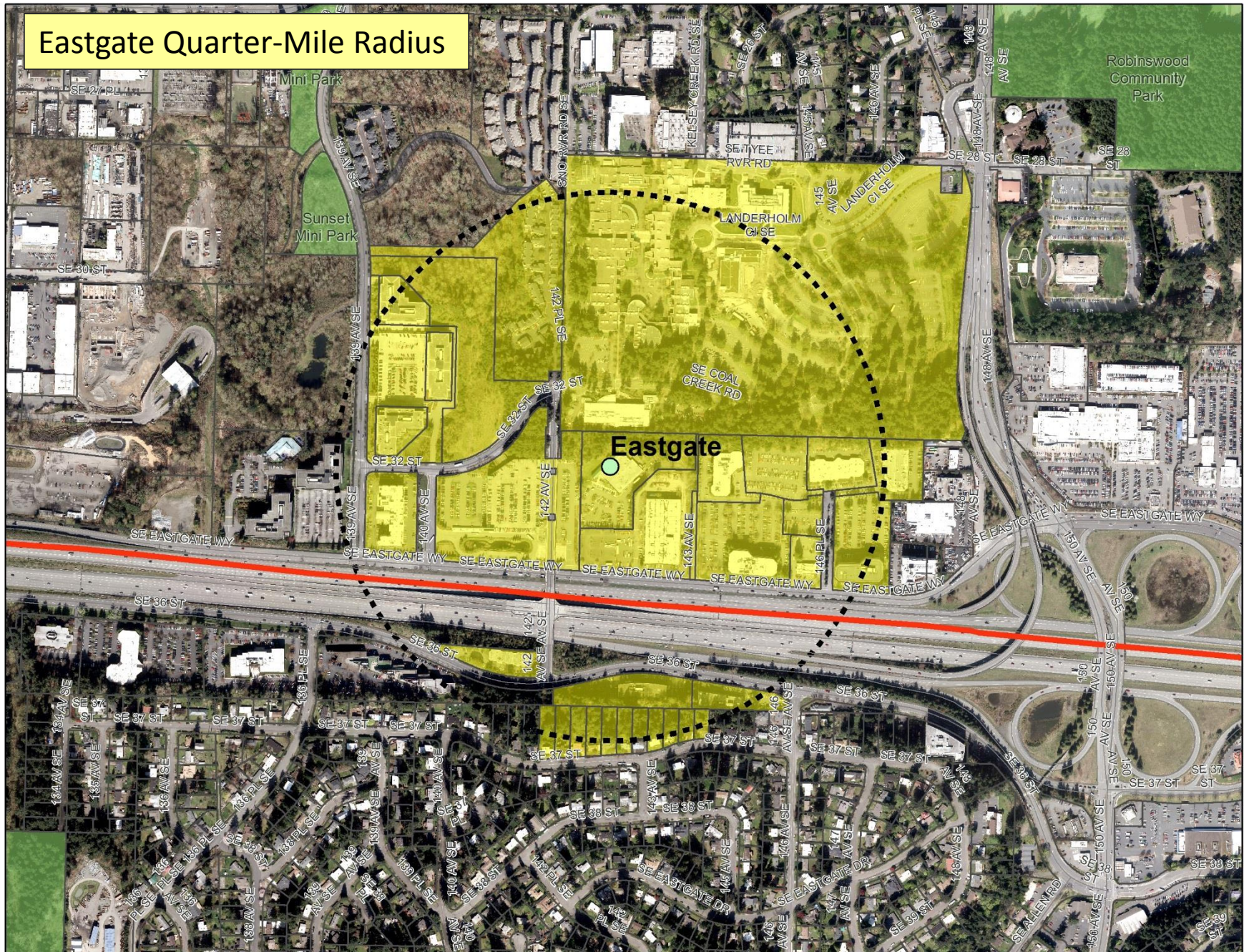
Generalized Zoning



Eastgate Public Health Site



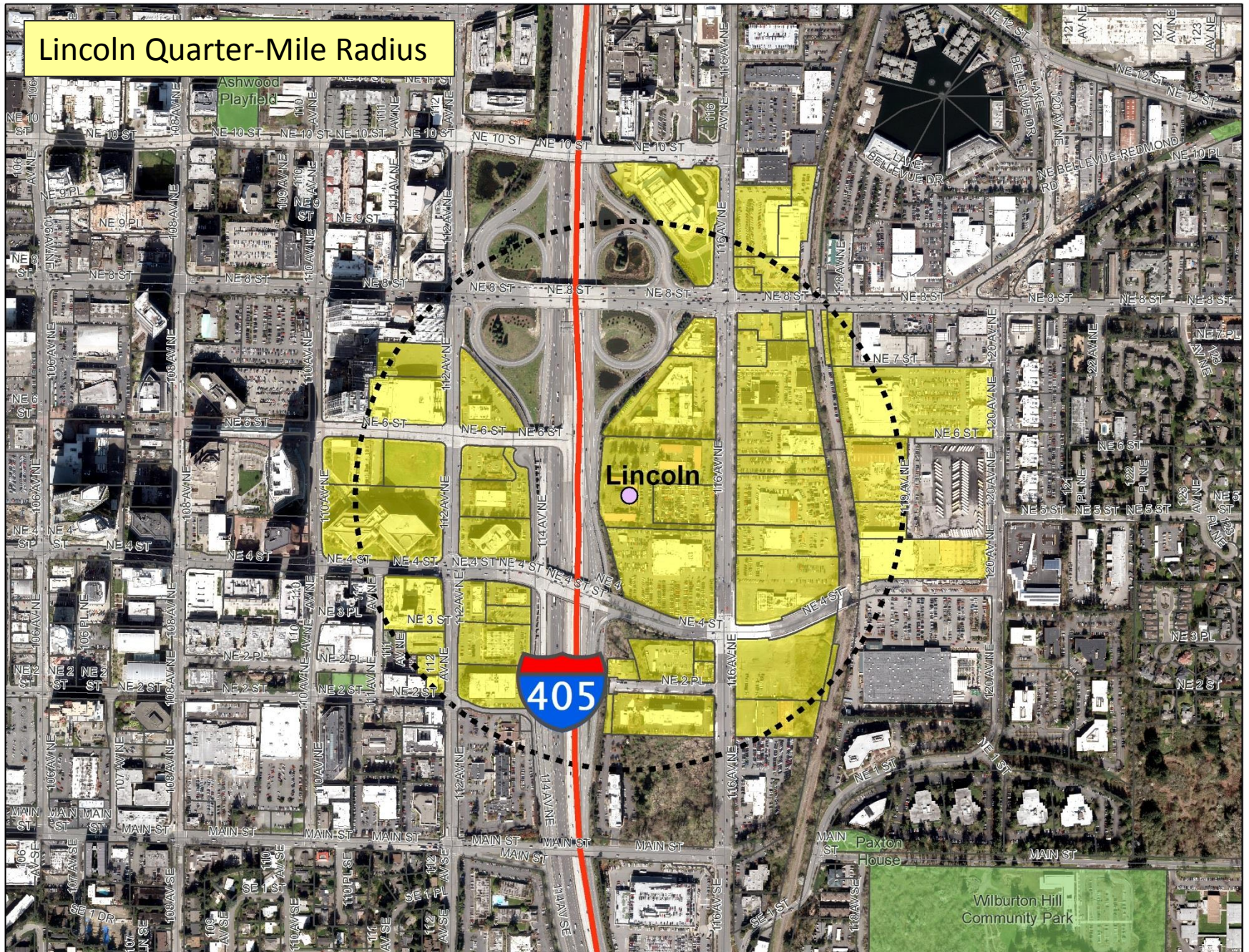
Eastgate Quarter-Mile Radius



Lincoln Center



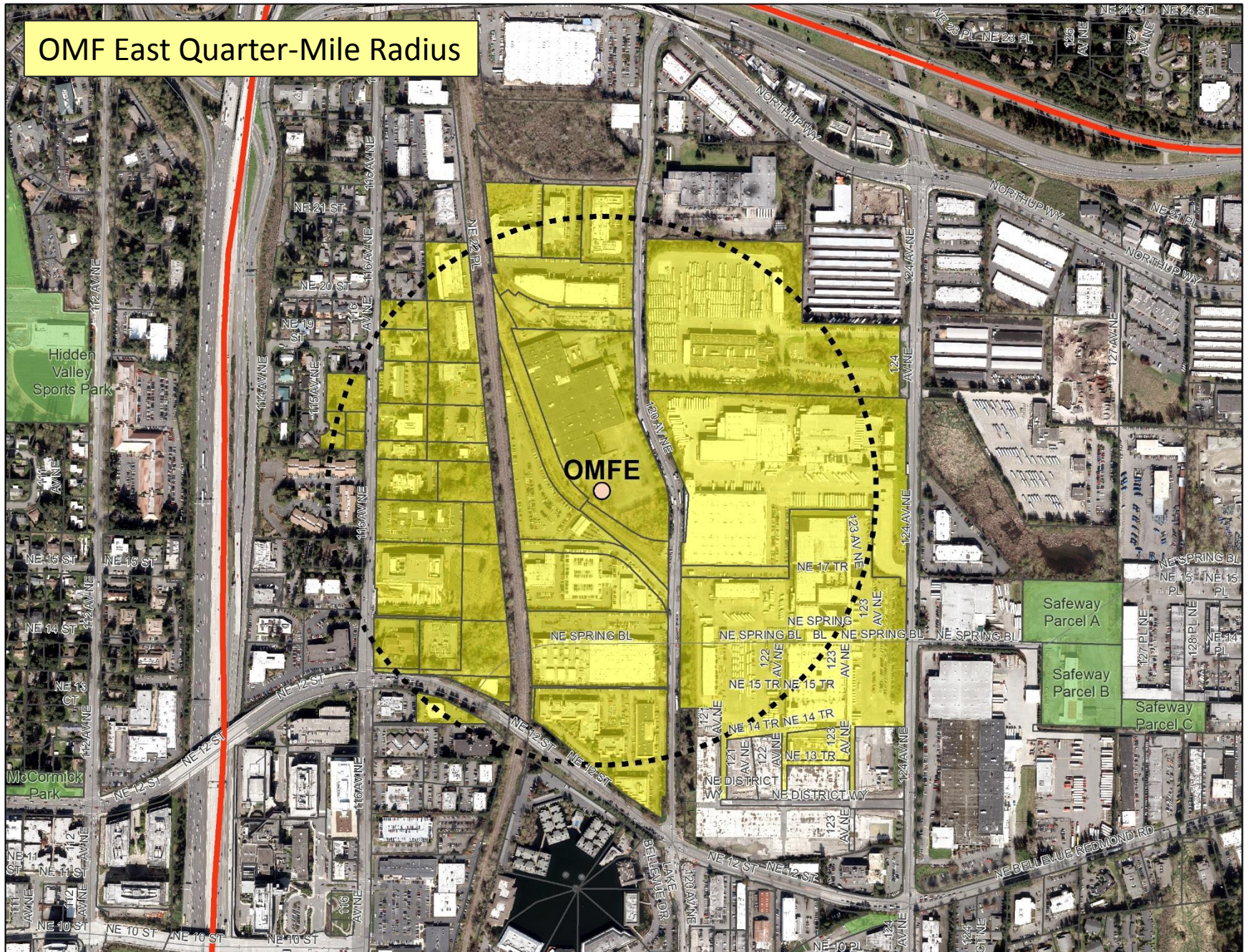
Lincoln Quarter-Mile Radius



Sound Transit OMF East



OMF East Quarter-Mile Radius



Exploratory Information



Questions / Discussion

Proposed Development Agreement

- Govern scope and scale of shelter and day services center
- Define operation parameters
- Required Crime Prevention Through Environmental Design (CPTED) analysis as part of design process
- Define and initiate an Advisory Committee
- Require a Good Neighbor Plan as product of the Advisory Committee
- Other requirements, as needed

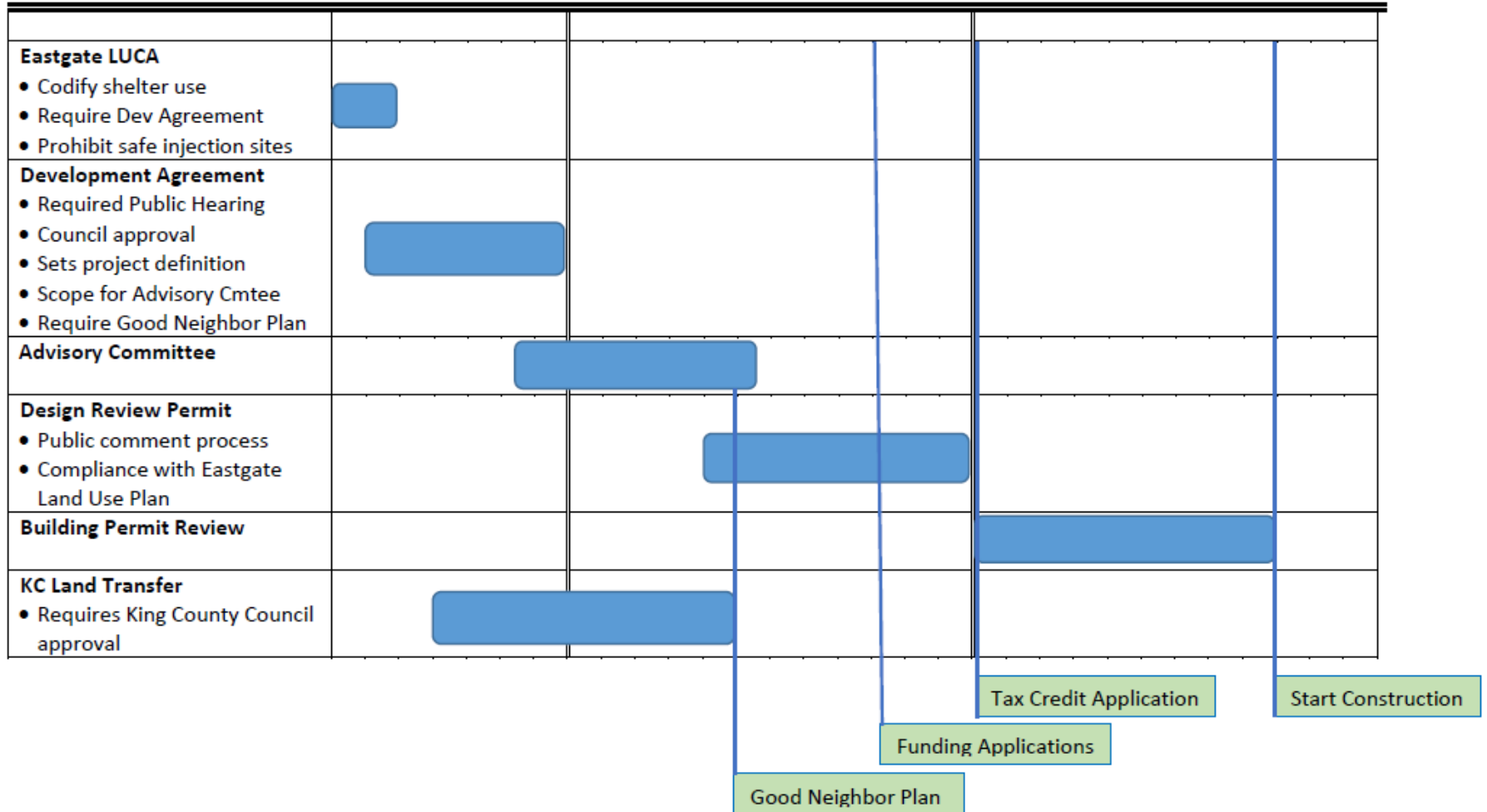
Proposed Advisory Committee

- Required by DA
- Broad spectrum of involvement
 - Immediate neighboring institutions and businesses
 - Neighborhood residents
 - Community stakeholders
 - City of Bellevue – Police and Human Services
- Two phases
 - Design: collaborative input on design and mitigation
 - Operations: establish protocols for ongoing communication, monitoring and performance measures
- Produce Good Neighbor Plan

Eastgate Road Map

2018

2019



Council Action: Option 1

Public Health Site Next Steps

- Council direction given on April 17, does not require new vote
- Immediate next step: Eastgate LUCA
 - Adding Development Agreement for shelter uses to Eastgate LUCA
 - Require and participate in formation of project advisory committee
 - Prohibit safe injection sites in Eastgate LUCA
- Other actions:
 - Add citywide prohibition to code work plan
 - Prepare options for stronger vehicle parking enforcement
 - Undertake public education campaign on homelessness

EASTSIDE MEN'S SHELTER AND SUPPORTIVE HOUSING

A partnership between City of
Bellevue, King County, King County Public Health, Congregations for
the Homeless and Imagine Housing.

A decorative horizontal line spanning the width of the page, featuring a central logo consisting of three stylized, overlapping squares.