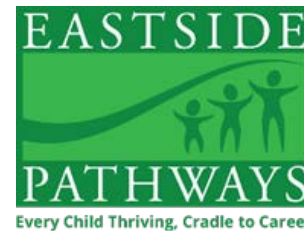


Eastside Pathways

Every Bellevue Child a Success

Bellevue City Council Presentation
September 11, 2017



Eastside Pathways - Update

Approach

- EP Supports Families and Children, from “Cradle to Career”

COB/EP Agreement

- EP Partners with the City Investing in Bellevue’s families and children

Impacts

- EP Addresses Community issues impacting the healthy development of families and children

EP *Approach*

8 Collaboratives to support system change impacting families, children and youth



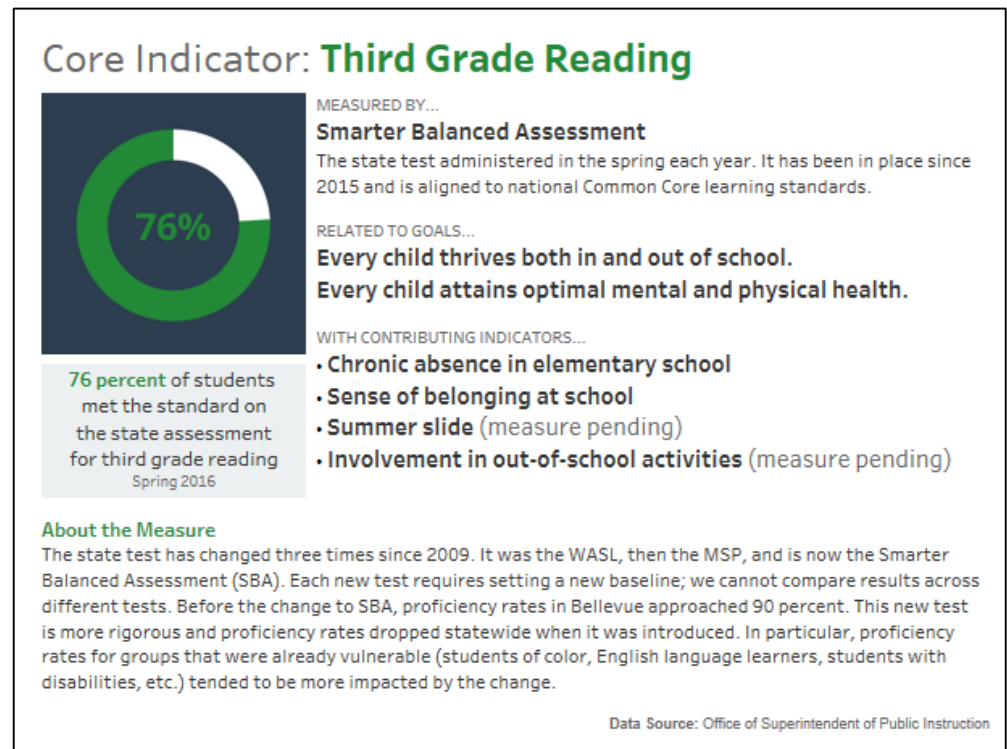
School Readiness • Summer and Extended Learning • Attendance • Transitions •
Career Pathways • Mental Health and Wellbeing • Community Engagement •
Business Engagement Group

COB/EP Partner *Agreement*

- Alignment of Data Outcome Measures
- Development of Data Sharing Framework
- Annual Community Report
- Training and Volunteer Services

Alignment of Data

- EP updated and expanded *Tableau dashboards* for real-time reporting
- Created disaggregation of data for partners and the public
- Ensured Data Outcome Measures are in alignment with national data system (Strive Together)



EP Tableau Dashboard

Development of Data Sharing Framework

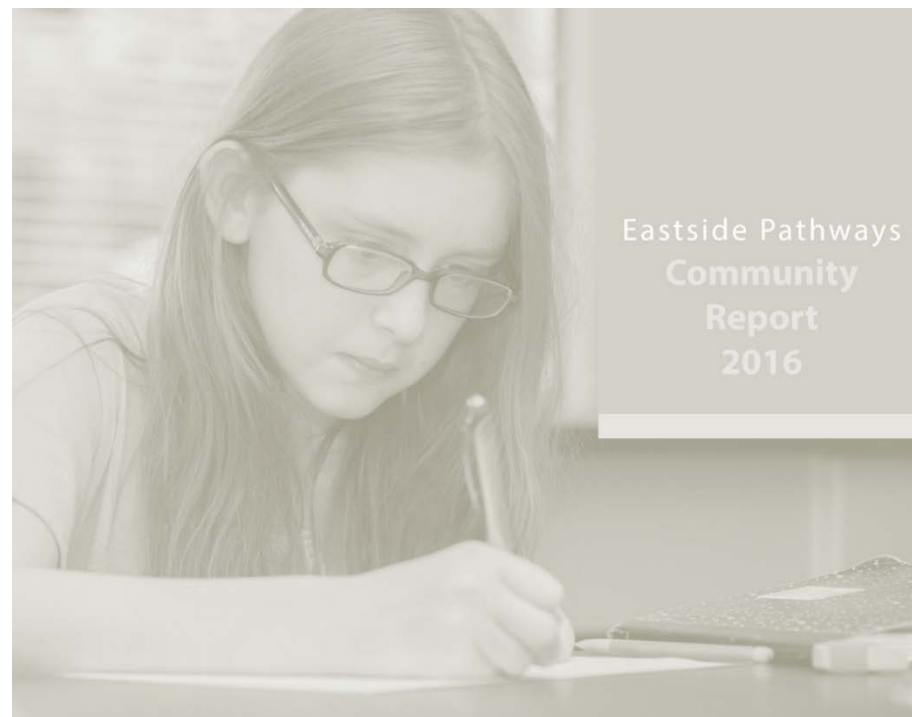
- Identified a benchmark for the partnerships' 2017 focus:

“The partnership facilitates the collection and connection of Academic data across the cradle to career pipeline and among partners to enable continuous improvement.”
- Re-launched Data Council with COB, BSD, non-profits, and other data-driven organizations
- Data Council current work:
 - Ensure collaborative work is aligned to partnership goals and indicators
 - Identify 2 collaboratives to complete a thorough data review
 - Find effective strategies for data usage

Annual Community Report

From Birth to 26 years, EP is guided by five goals:

- Every child is ready to learn
- Every child thrives both in and out of school
- Every youth graduates from high school prepared for their postsecondary plan
- Every young adult attains postsecondary education or training and enters a career of their choice
- Every child attains optimal mental and physical health



Annual Community Report

- 151 Head Start pre-school slots (low-income children) scheduled for funding cuts remained due to the City, Bellevue Schools Foundation and Child Care Resources
- 61% entered kindergarten with expected skills
- 76% read proficiently in third grade
- 94% graduated high school within five years
- 65% earned a postsecondary degree within six years of graduating high school
- 86 Bellevue families remained in affordable housing due to the City and the King County Housing Authority

Training and Volunteer Services

- Launched Eastside Pathways 101
- 12 new partner organizations
- Tailored 101 events for City of Bellevue employees



Training and Volunteer Services

- Partnered with Leadership Eastside “Adaptive Leadership” training
- Held quarterly Adaptive Leadership Facilitator Training/ Review
- 60+ community partners working collaboratively
- Engaged Latino community with the Promotorés Project
- Backbone became fiscal sponsor of Eastside Latino Leadership Forum (ELLF) and Eastside Refugee and Immigrant Coalition (ERIC)

EP *Impacts* – Addressing Community Issues

- Creation of the Promotorés Project
- Development of Attendance Campaign
- Incorporate racial equity in systems
- Expansion of EP into the Lake Washington School District

Impacts – Promotorés Project

- Trained eight members of Latino Community to lead in education, employment and professional development
- EP provided 30 hours of training
- EP engaged with Hispanic community
- Increased understanding of Latino community needs, identified gaps, and areas of interest



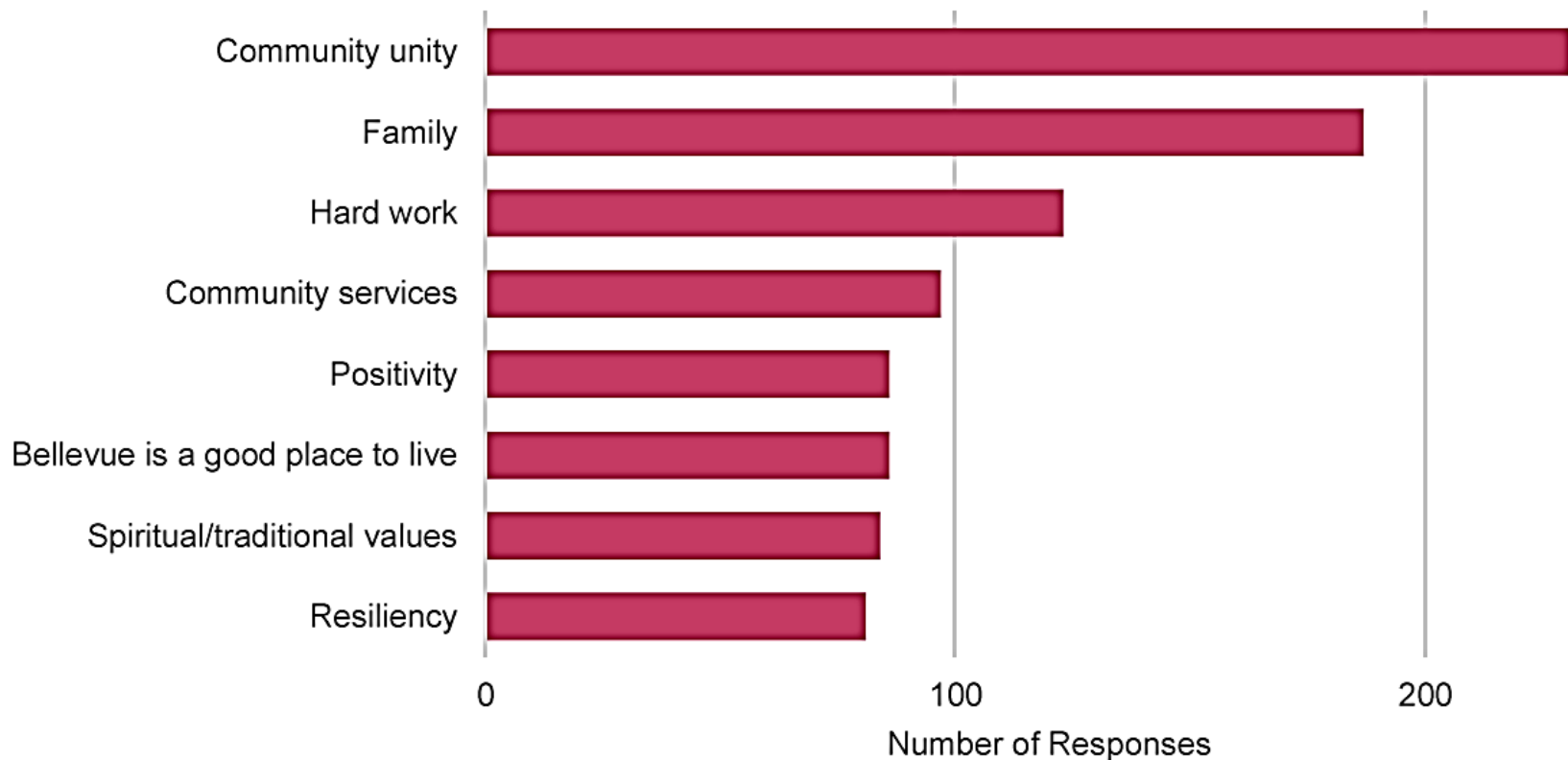
The Promotorés and Support Team

Back row: Edi Flores, Angelica De Anda, Reina Lagos Rodriguez, Ana Gloria Lino, Blanca Alfaro Lopez, Paulo Perez Medina, Victor Londoño Quintero, Nahyeli Mendivil, Alma Gonzalez, Delfina Gonzalez Medina

Front row: Cathy Habib, Isela Vega Arriaga, Cecilia Martinez-Vasquez, Juan Arroyo

Impacts – Latino Community Report

1. What are the strengths of the Latino/Hispanic Community in Bellevue, Redmond, and Kirkland? (1,039 responses)



Impacts – Latino Community Report

- Latino community felt heard by mainstream community
- Latino community expressed strong need for increase in culturally relevant and linguistic services to meet their needs

The Results

The results of the survey are presented in four discrete areas:

Community

The Latino community's view of itself (strengths, assets), its relationship with the broader Bellevue community, and its level of civic engagement.

Needs

The needs of the Latino community across a variety of areas.

Service Utilization and Outcomes

Service utilization patterns of Bellevue's Latino community and their perception of the outcomes of service usage. Also identifies local organizations that have achieved a good level of engagement with members of the Latino community.

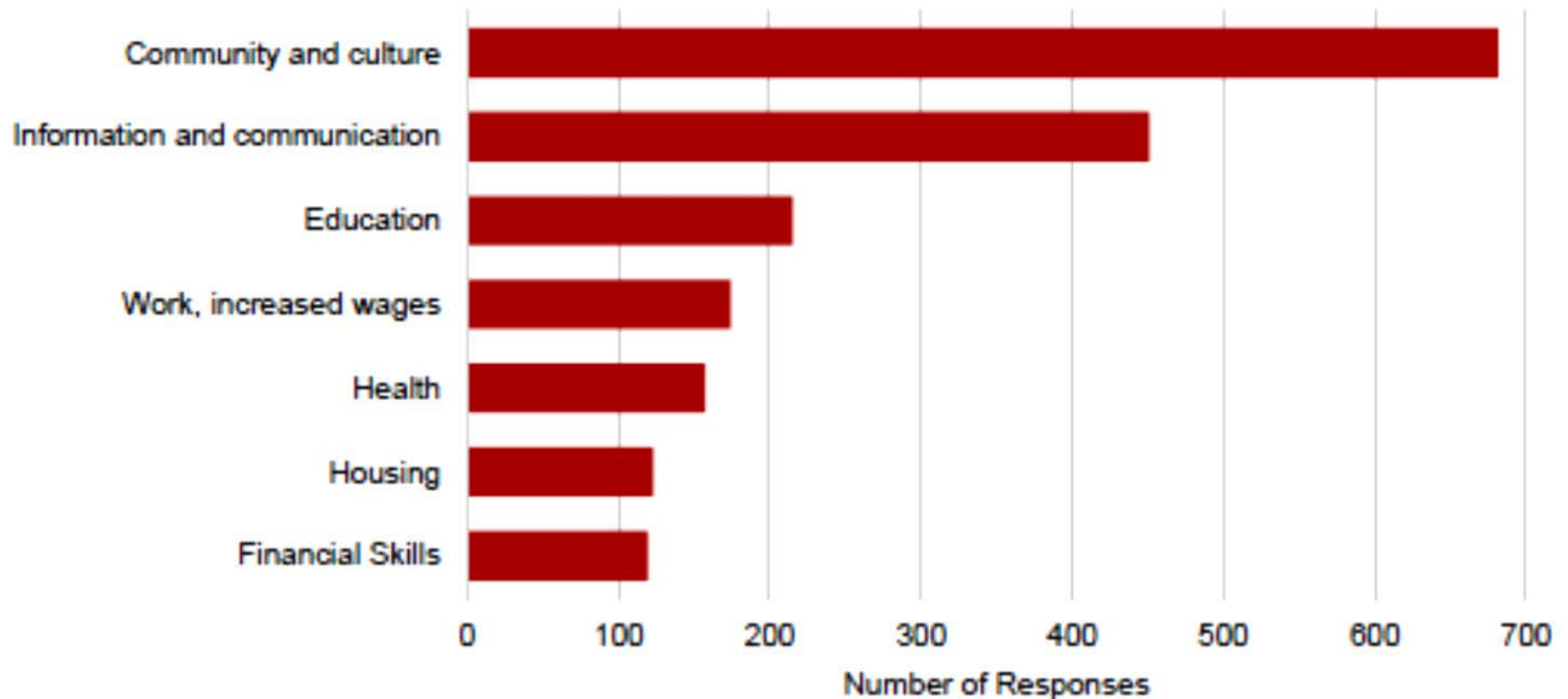
Information and Referral

The Latino community's level of information and knowledge of available community services as well as patterns and methods of seeking assistance.

- Service providers expected and relied upon to minimize service gaps for the Latino community
- EP Partner organizations deeply interested in the Community Survey findings

Impacts – Latino Community Report

5. What do families need to thrive in Bellevue or your community? (2,060 responses)



Impacts – Attendance Campaigns

- Year 4 of a multi-year tardiness campaign
- Focus on addressing and preventing chronic absenteeism
- The collaborative engaged families to change behavior
- Identified barriers to attendance for chronically absenteeism
- King County Housing Authority now leads the county-wide campaign



Impacts – EP Attendance Campaigns

- September is Attendance Awareness month
- The City of Bellevue supports the campaign:
 - Provides campaign materials
 - Overpass banners
 - Banners currently on overpasses at 148th St & NE 10th
 - Participates on the Attendance Collaborative
- 2016 Campaign result in targeting Title 1, Elementary Schools
- New attendance numbers coming in December



Impacts – Incorporating Racial Equity

- 38 EP Partners trained on Racial Equity
- Established EP Racial Equity Team (EPRET)
- Partnered with BSD to host NW Pacific Educational Group (PEG) Regional Summit:
 - 350 attendees
 - Largest Summit in PEG History
 - 40 COB Employees trained since 2014
 - Summit will return to Bellevue in 2018
- Pre-PEG Event:
 - 110 attendees
 - 49 organizations represented
 - Follow up event in Fall 2017

Impacts – Incorporating Racial Equity

76% read proficiently in third grade

CORE INDICATOR #2

Equity Gaps in Reading

While Bellevue has consistently high reading rates compared to the state, gaps within the student population are large. Only around half of Hispanic and Black students met the standard for reading in 2016 (compared to at least 80 percent of other students), and a quarter scored at the lowest level.

Gaps based on family income, English language ability, special education status, and homelessness are similarly large—anywhere from 28 to 46 points.

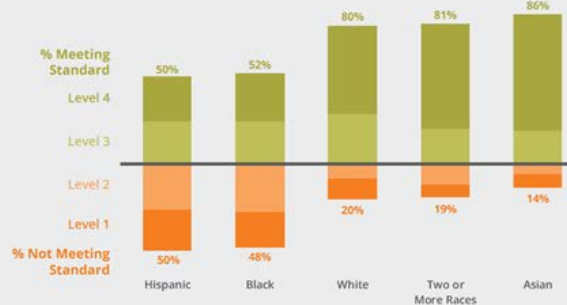
Most gaps are now larger as measured by Smarter Balanced compared to the old test. This was true statewide: when the

test changed, passing rates tended to drop more dramatically for vulnerable groups than for their more advantaged peers.

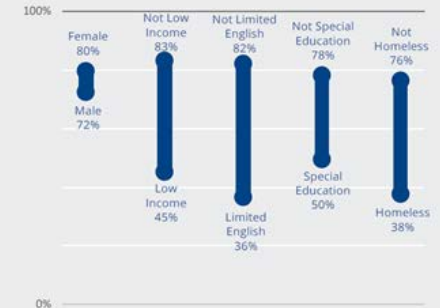
FIGURE 1: Bars compare distribution of scores across four proficiency levels. Students who passed with score of "Basic" (N=16) captured in Level 3.

FIGURE 2: Dots show percent meeting standard. Bars connecting dots show the size of the gap between them.

THIRD GRADE READING BY RACE/ETHNICITY (Figure 1)



THIRD GRADE READING SUBGROUP GAPS (Figure 2)



Impacts – Expansion

- Signed Lake Washington School District as a partner
- Began Eastside geographic expansion, which doubled the number of youth and families impacted through Eastside Pathways
- Presented tailored EP 101 for municipalities within and for the Lake Washington School District



Q/A

