



Bellevue City Council – October 9, 2017

Presenting:

Kate Berens, Deputy City Manager

Patrick Foran, Director of Parks & Community Services

Major Carl Kleinknecht, Police

# Presentation Overview

## Homelessness Update

- Background
- Bellevue's response
- Trends

## Council Conversation

- Upcoming Legislative Actions
- Next steps

# Council Actions

- On-going Human Services funding for homeless
- 2008 – Present City funding for winter shelter
- 2014-2015 Council Vision Priorities
- 2015 ARCH funding approved
- 2015 Interest Statement on Homelessness
- 2015 Updated Comprehensive Plan Policies
- 2016-2017 Council Vision Priorities
- 2017 Affordable Housing Strategy

# **Bellevue's Response to Homelessness**

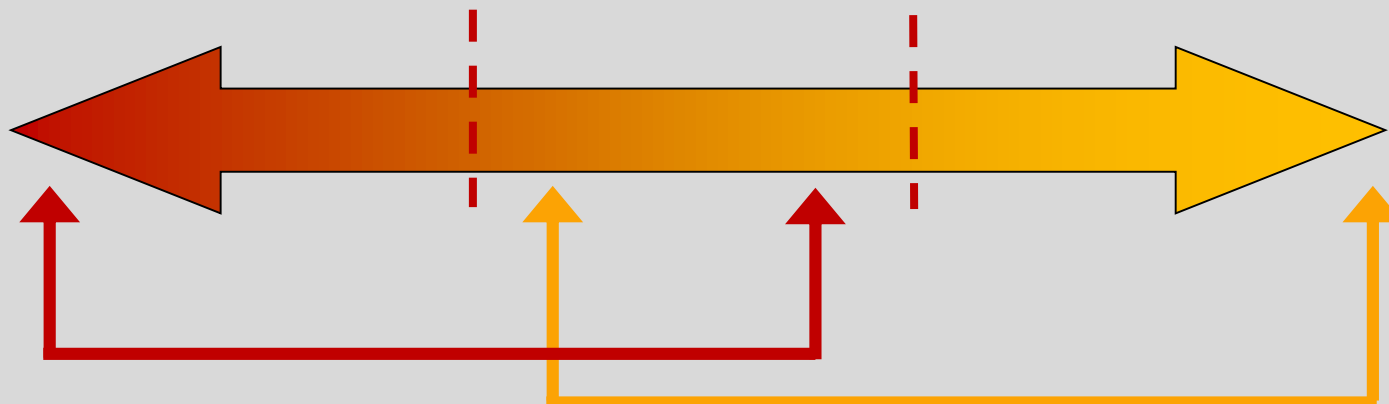
- **Commitment to compassion and pragmatism**
- Focus on transitioning individuals out of homelessness
- Coordination with Eastside cities
- Leverages partnerships with local organizations to serve the local need of the community
- **Commitment to maintain public realm and public safety**

# Human Infrastructure Continuum

**INTERVENTION**  
Dependency upon  
established “systems”

**PREVENTION**  
“At-risk” youth,  
individuals, families

**ENHANCEMENT**  
Self-directed self-  
actualization activities



Assist people in times of need

Examples: Emergency & transitional housing, food banks, outreach, health & mental health services, substance abuse treatment and services, domestic violence, sexual assault services, probation offender case management, emergency response and enforcement, transportation support

Promote development of healthy individuals and families

Examples: employment assistance and jobs, child care resources, prevention support, mentoring, early learning, youth development and leadership, family support, socialization and recreation, English-as-Second Language (ESL) classes.

# Count Us In Report

## King County January 2017

<u>REGION</u>	<u>UNSHELTERED</u>		<u>SHELTERED</u>	
	%	<i>n</i>	%	<i>n</i>
East County	5%	284	6%	347
North County	1%	53	2%	148
Northeast County	2%	119	1%	47
Seattle	70%	3,857	76%	4,665
Southwest County	20%	1,102	15%	915
Southeast County	1%	70	1%	36
<b>TOTAL</b>	<b>100%</b>	<b>5,485</b>	<b>100%</b>	<b>6,158</b>

# Who Experiences Homelessness

Children and Families



257 School Age Children  
(2016-17 SY)

319 Family Members Used Winter  
Shelter (2016-17)

Young  
Adults



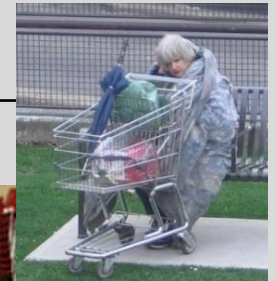
100 (2016 All Home Count  
Bellevue, Redmond, Kirkland)

Single Women

192 (2016-17)

Single Men

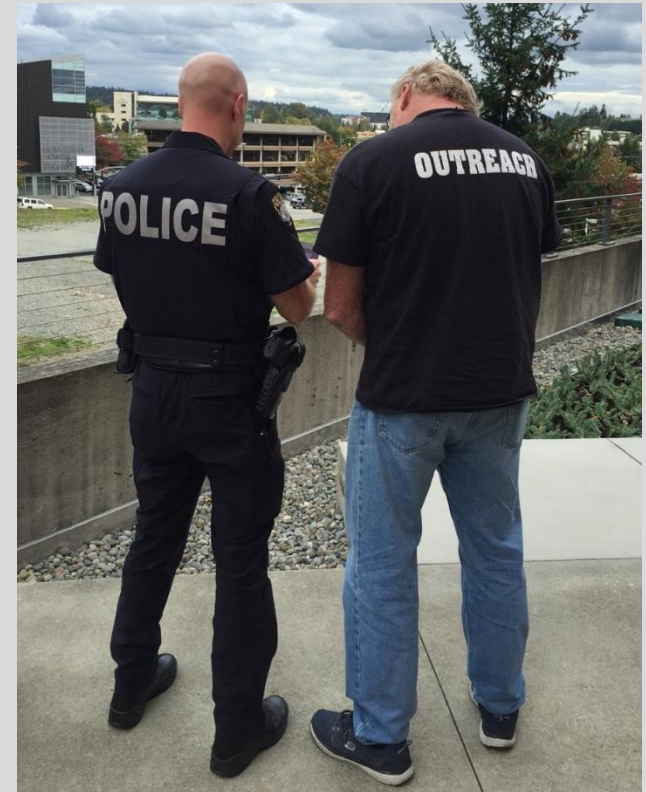
429 (2016-17)





# Collaborative, Coordinated Approach

- **Policy**
  - Framework for Bellevue's priorities and response
- **Outreach**
  - Outreach workers, case management, mobile crisis team, community partnerships,
- **Support Services**
  - To prevent homelessness
  - For individuals experiencing homelessness
- **Facilities**
  - Day centers, shelters, supportive housing, affordable housing
- **Enforcement**
  - Maintain safety, code compliance, criminal activity





# Coordinated Agency Approach

- King County
  - All Home
  - Mental Illness & Drug Dependency
  - Best Start for Kids
  - Veterans Services
- Eastside Cities



# 2017 Human Services Homeless Services Funding

Prevention, Intervention, Outreach	\$199,075
Shelters	\$371,118
Day Centers	\$133,676
Housing	<u>\$295,243</u>
	\$999,112

hope link

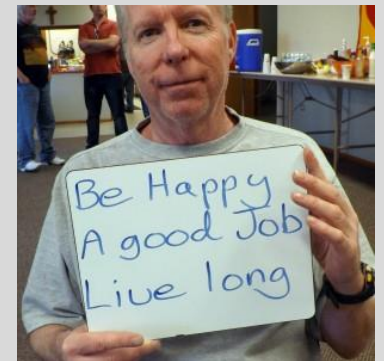


Imagine Housing  
building eastside communities



# There is Always Additional Opportunity to Explore

- Continuous research in best practices
- Outreach to other human services providers
- Conversations with businesses to provide employment opportunities
- Continued discussion for additional faith community services
- Expand community support, education, outreach



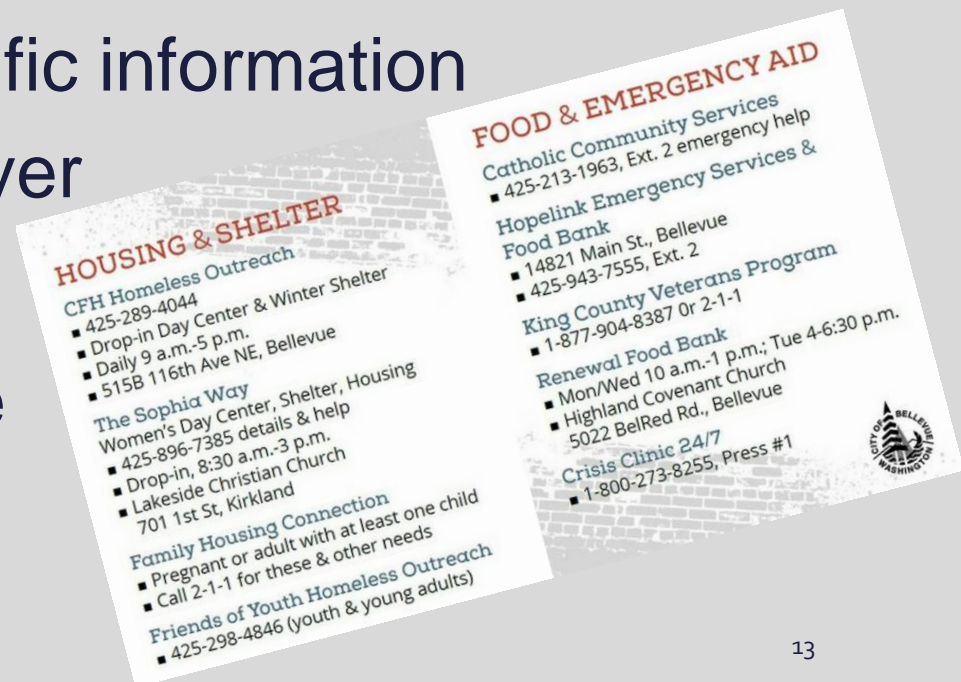
# Potential City Investments (Support and Resources)

- Homeless response unit
  - Support services
  - Outreach and counseling
  - Police
- Flexible emergency funds
- Additional enforcement personnel
- Community education and awareness



# Additional Tools Education and Outreach

- Comprehensive web page update
- Develop business and neighborhood outreach plan
- Panhandling specific information
  - Informational flyer
  - Resource card
  - Website update



# Additional Tools Enforcement

- RV/car camping
  - **24-hour parking code amendment**
  - Prohibiting RV/car camping on residential streets
  - Permitting RV parking
- **Public camping code amendment**
- **Illegal waste dumping**

# Moving Forward

Oct 16, 2017	Legislative Action Safe Injection Site Prohibition
Oct 23, 2017	RV/Car Camping LUCA Citywide Shelter LUCA Scope/Schedule Resource/Funding Gaps
Nov 6, 2017	Potential Legislative Action RV/Car Camping LUCA
Nov 13	Follow-up on Eastgate status/next steps Follow-up on OMF East schedule/next steps
Nov-Jan 2018	Continue Discussion Citywide Shelter LUCA Update on Crime Statistics/Analysis
Feb 8, 2018	Interim Official Control Expires



