

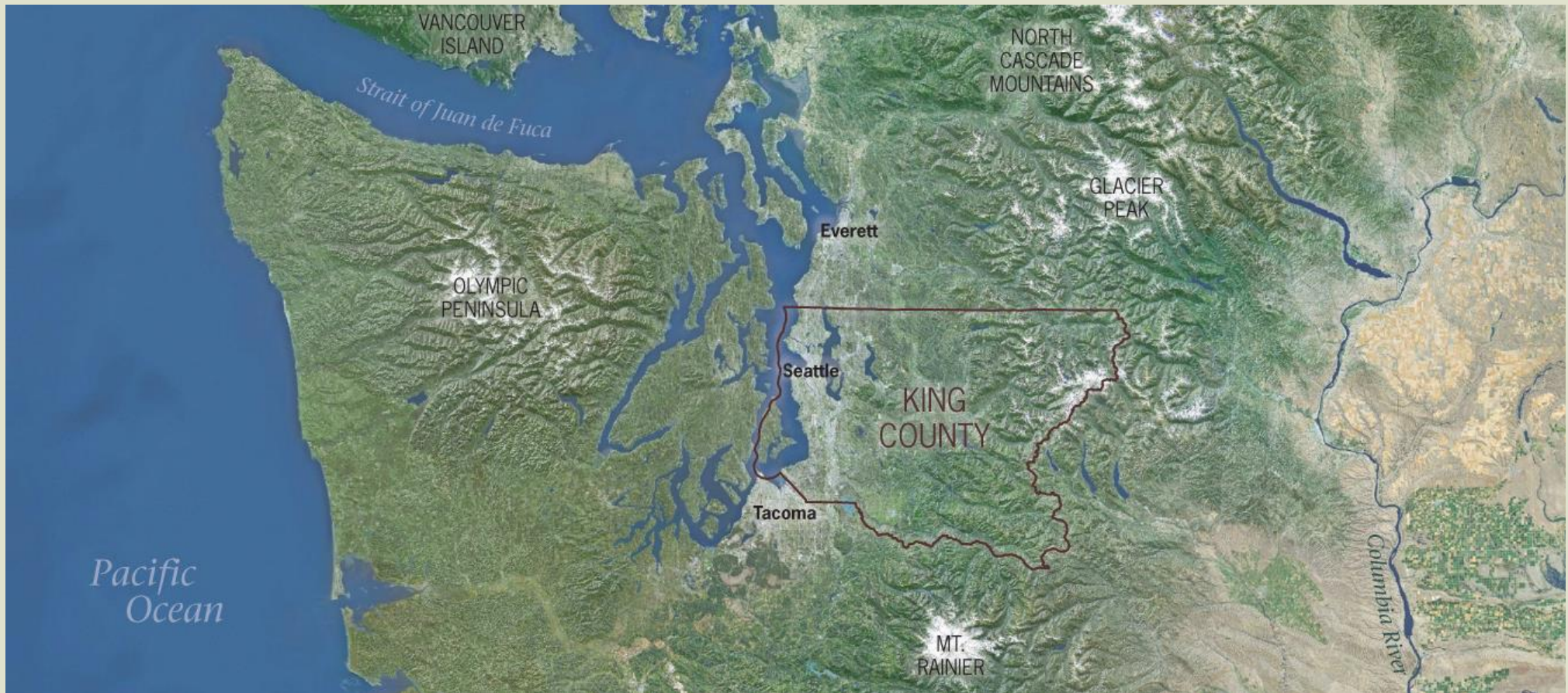
LAND CONSERVATION & PRESERVATION WORK PLAN



King County

Presentation Updated October 2017

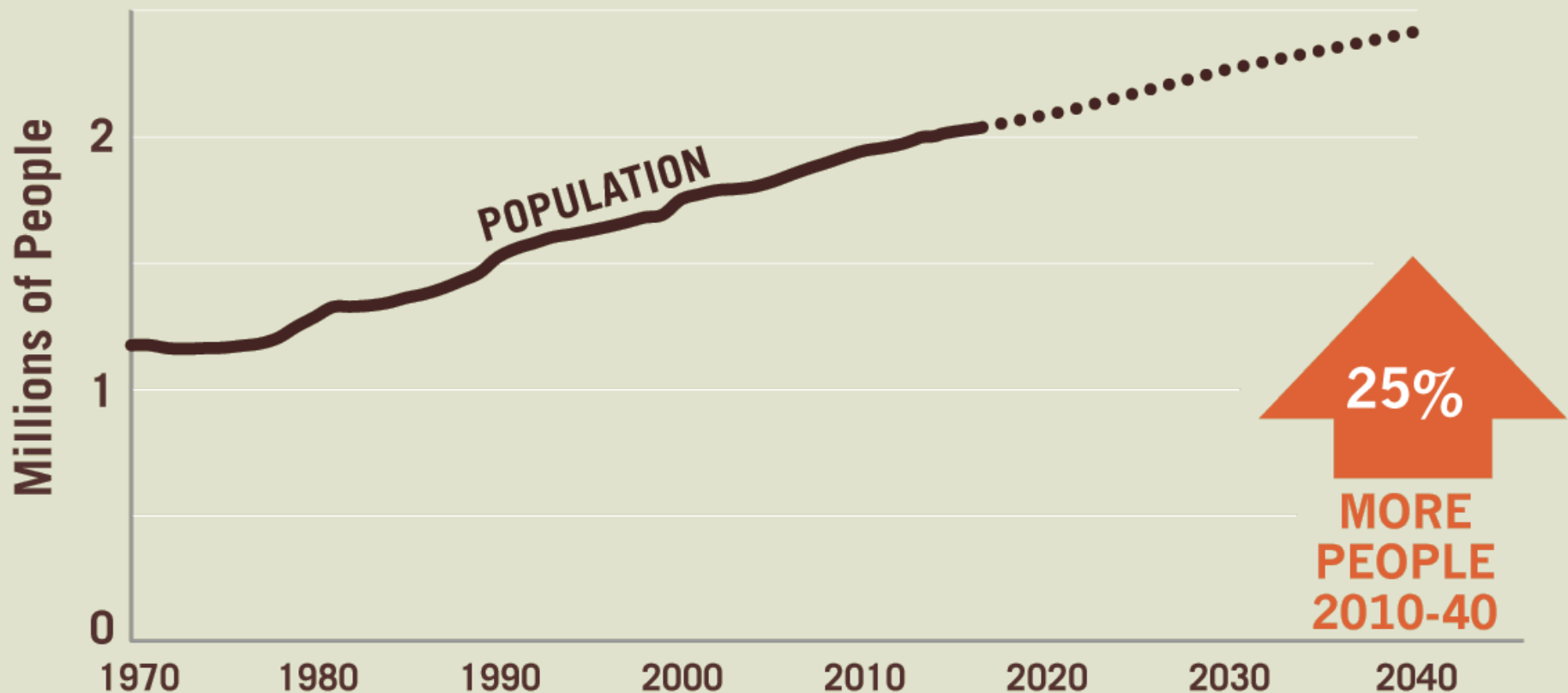
King County: The Heart of Cascadia



Importance of Conservation

King County's valuable landscape is worth protecting. Our landscape is spectacular – from the depths of the Puget Sound, with iconic salmon and orca whales, through a thriving metropolis, quiet rural communities, and abundant farms and working forests, to the alpine peaks of the Cascade Mountains. Our surrounding landscape gives King County a **competitive economic advantage** in the global marketplace – people want to live here and businesses want to be here, in part because of the abundant and accessible open space. For King County to thrive we need to keep our natural lands and river corridors intact, maintain viable working resource lands, and preserve great places for people to explore, relax and stay connected to the natural world.

King County is one of the fastest growing large counties in the U.S.



Data: WA state Office of Financial Management, *County Growth Management Population Projections: 2010-2040*, Forecasting Division, August 2012.

Conservation is part of responsible growth

More than 2 million people call King County home today, and many more will move here in the coming years. Because King County is one of the fastest growing large counties in the nation, **we must act quickly** to protect our most important remaining conservation lands before prices escalate and we lose opportunities as development pressure increases. Since the adoption of the Washington State Growth Management Act in 1990, regional leaders have focused growth in and around Seattle's metropolitan core and other urban areas, keeping the eastern reaches of King County rural so viable farmland, forest land, and other natural open spaces can continue to thrive.

Benefits and Value of Conservation to the Region



Climate Change



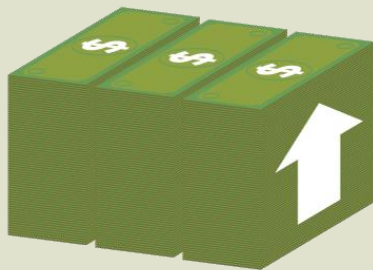
Biodiversity



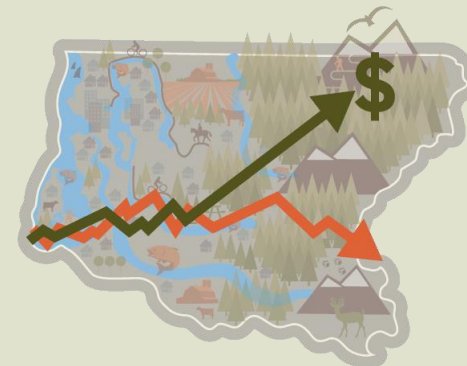
Social Equity



Human Health

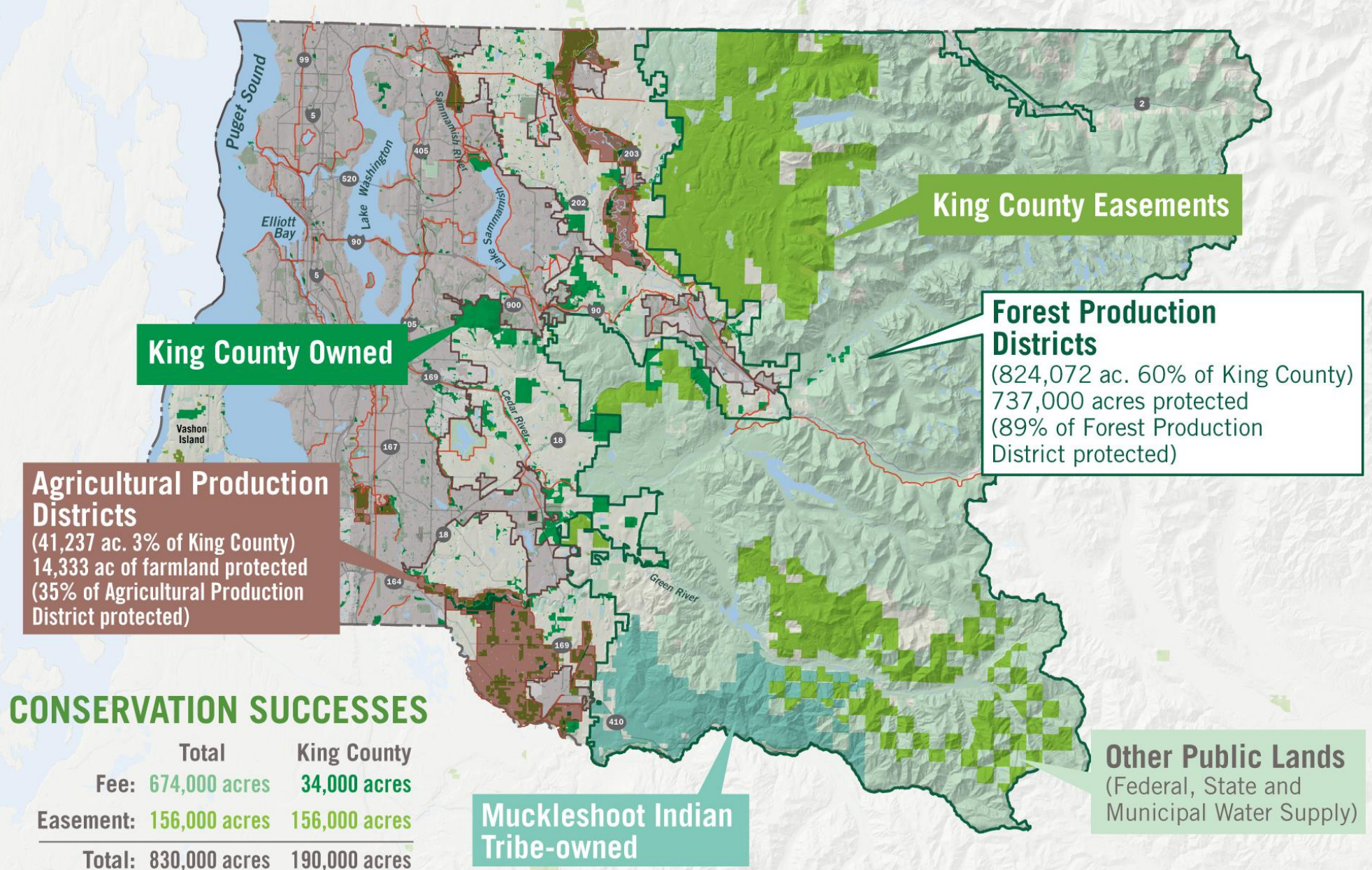


Economic Development



Competitive Advantage

Conservation Success To Date



Protect the remaining high conservation value lands
in King County, within a generation.





Natural lands
for clean water,
wildlife, clean air,
recreation,
ecological integrity
and resilience



**Healthy forests for
clean water,
wildlife, recreation,
and a sustainable
timber industry**



**Abundant
farmland for
healthy local food
and a thriving
farm economy**



A world-class
regional
trail network
to increase mobility
and reduce pollution



Natural river corridors
for water quality,
salmon, flood safety,
recreation, and a
healthy Puget Sound





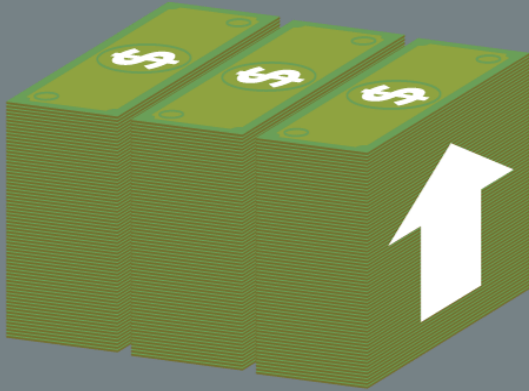
Urban river corridors
for increased water
quality, better health,
and recreational
opportunities for
residents



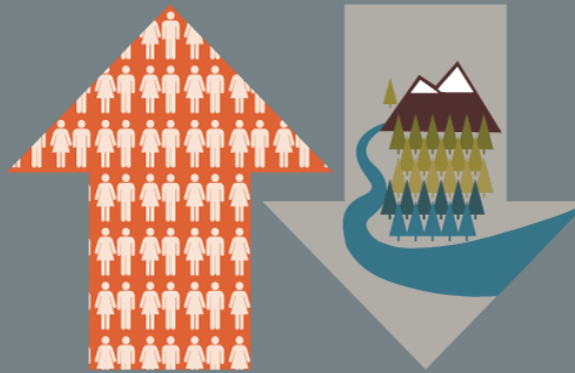
Urban Green Space
protecting green
spaces in cities,
providing nature-based
passive recreation or
community garden
opportunities.



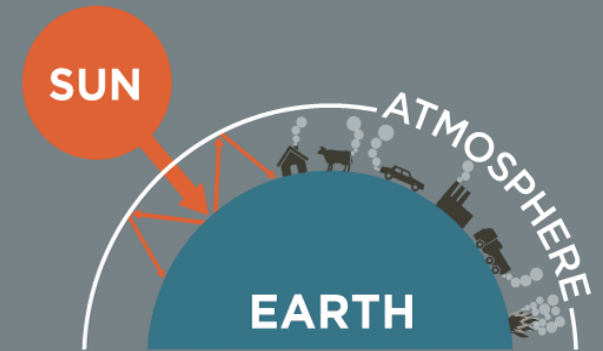
Why now?



The longer we wait, the more expensive it becomes.



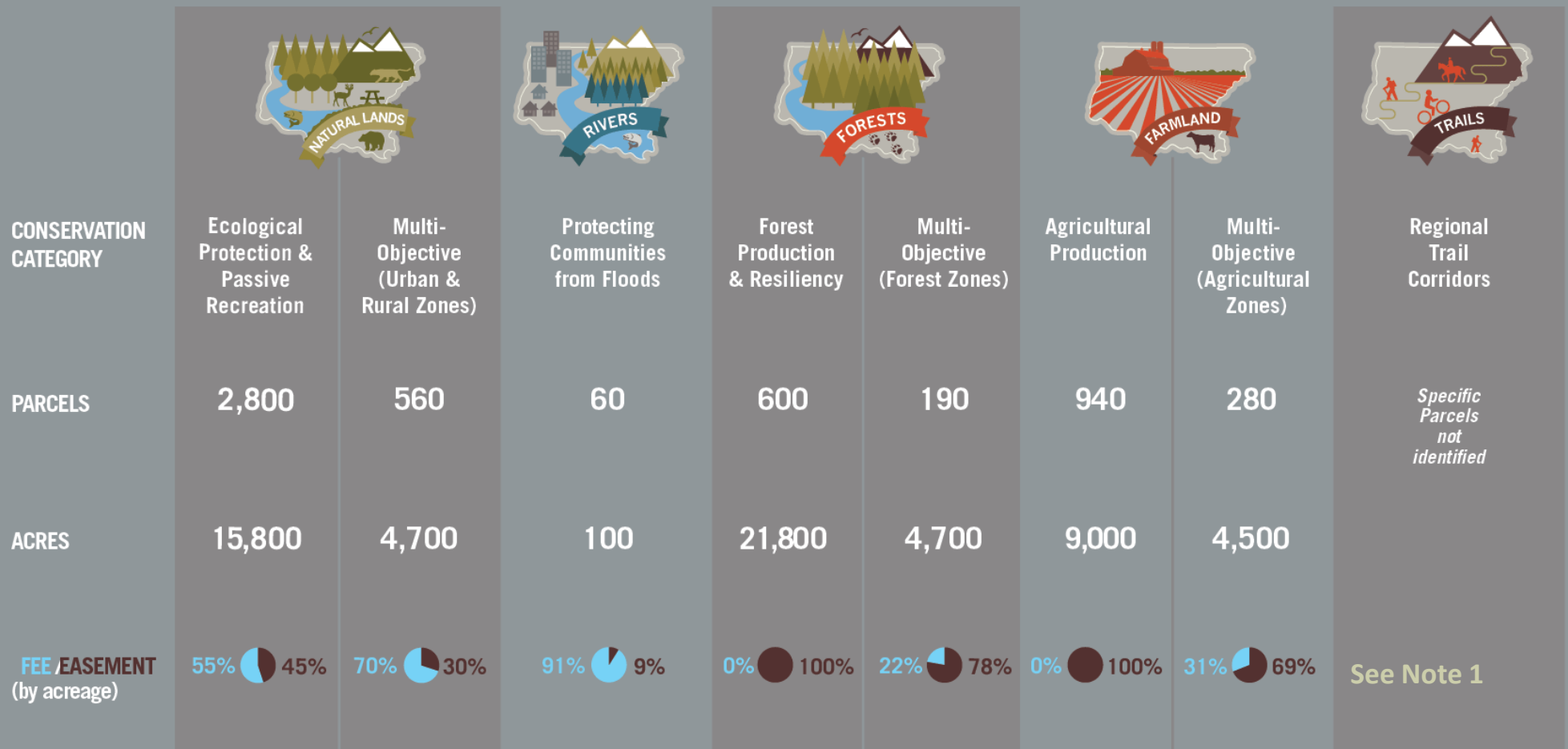
As population grows, opportunities to conserve land will diminish.



Climate change is creating an uncertain future.

What Lands Should We Consider?

Updated 2017 King County Conservation Priorities



TOTAL PARCELS: **5,400**

TOTAL ACRES: **60,600**

LAND COSTS ONLY: **\$1.35 billion**

City Engagement

- County staff met with all 39 cities in King County, holding 70 meetings total
- We engaged staff from every city, and at times worked with elected officials and presented at council sessions
- Meetings presented the Land Conservation Initiative, sought general feedback, and solicited city conservation priorities

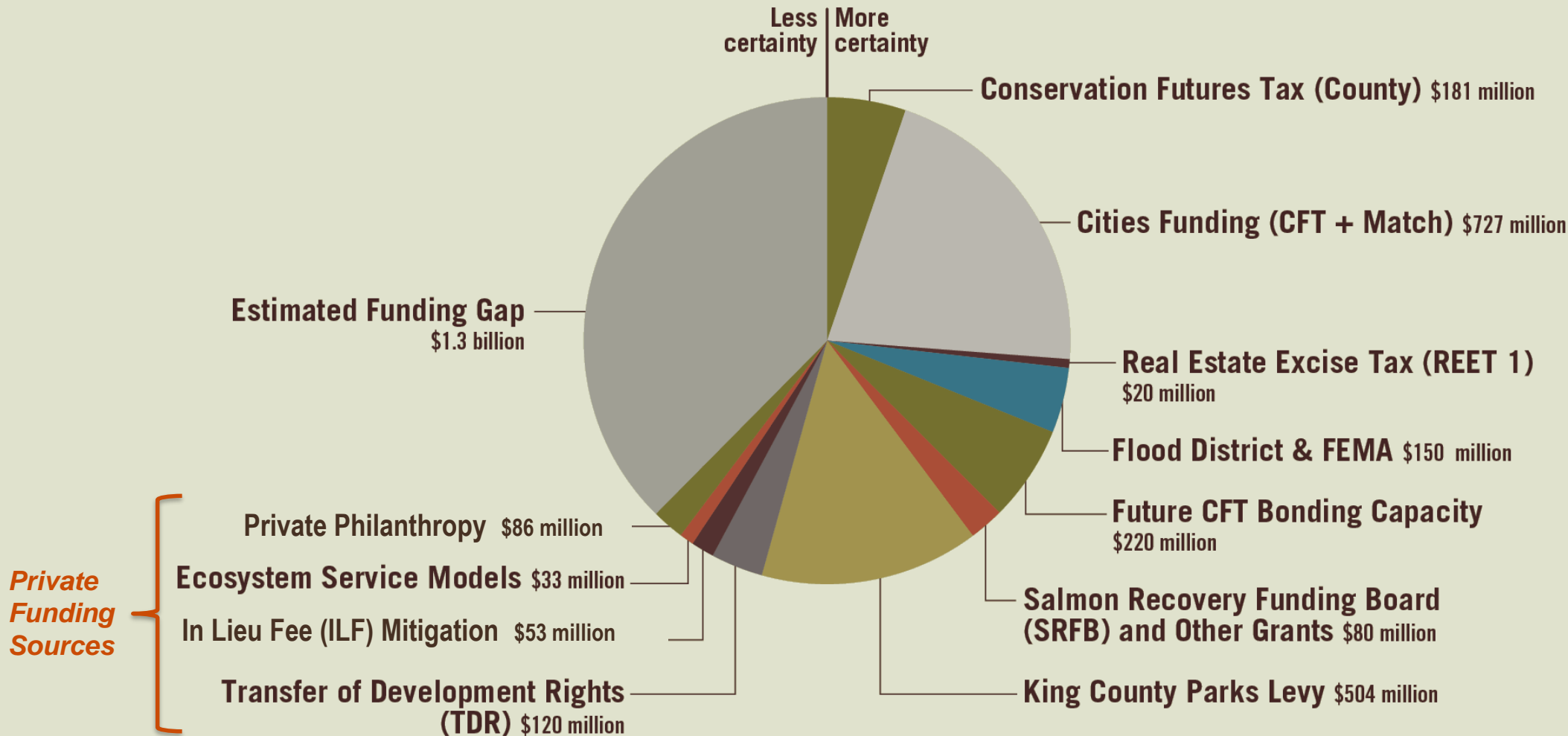
City Acquisition Priorities

- 25 cities identified acquisition targets (ranging from 1 to 459 acres)
- 8 cities had no identified priorities
- 6 cities with information pending (Seattle, Bellevue, Issaquah, Kent, Pacific, Algona)

City Priorities	
Parcels	900 parcels
Acres	2,160 acres
<i>Fee</i>	<i>1,660 acres fee</i>
<i>Easement</i>	<i>500 acres easement</i>
City Land Cost	\$410 million

Figures are rounded. Minor adjustments to figures may be made with data refinements.

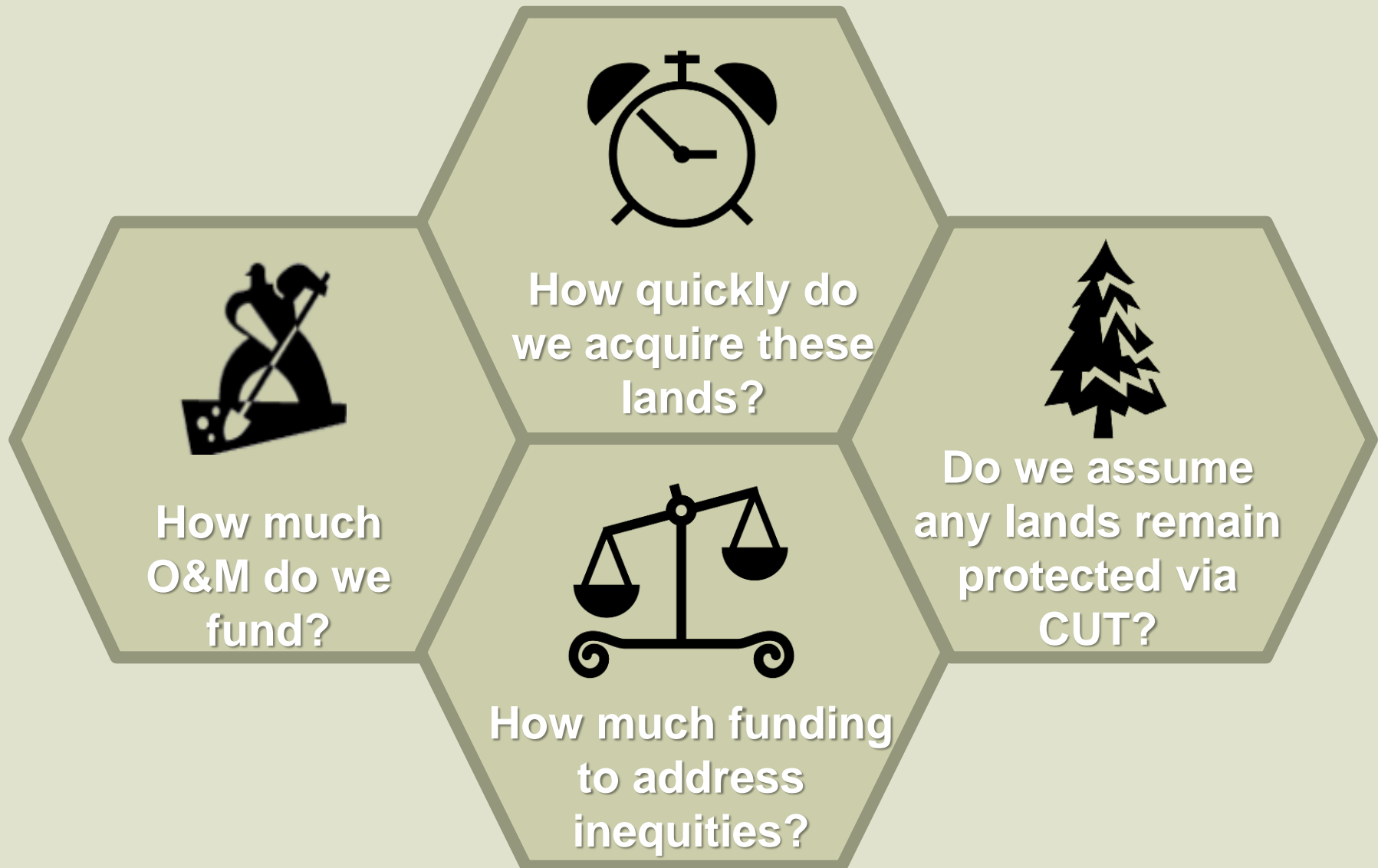
Available Funding – County & Cities



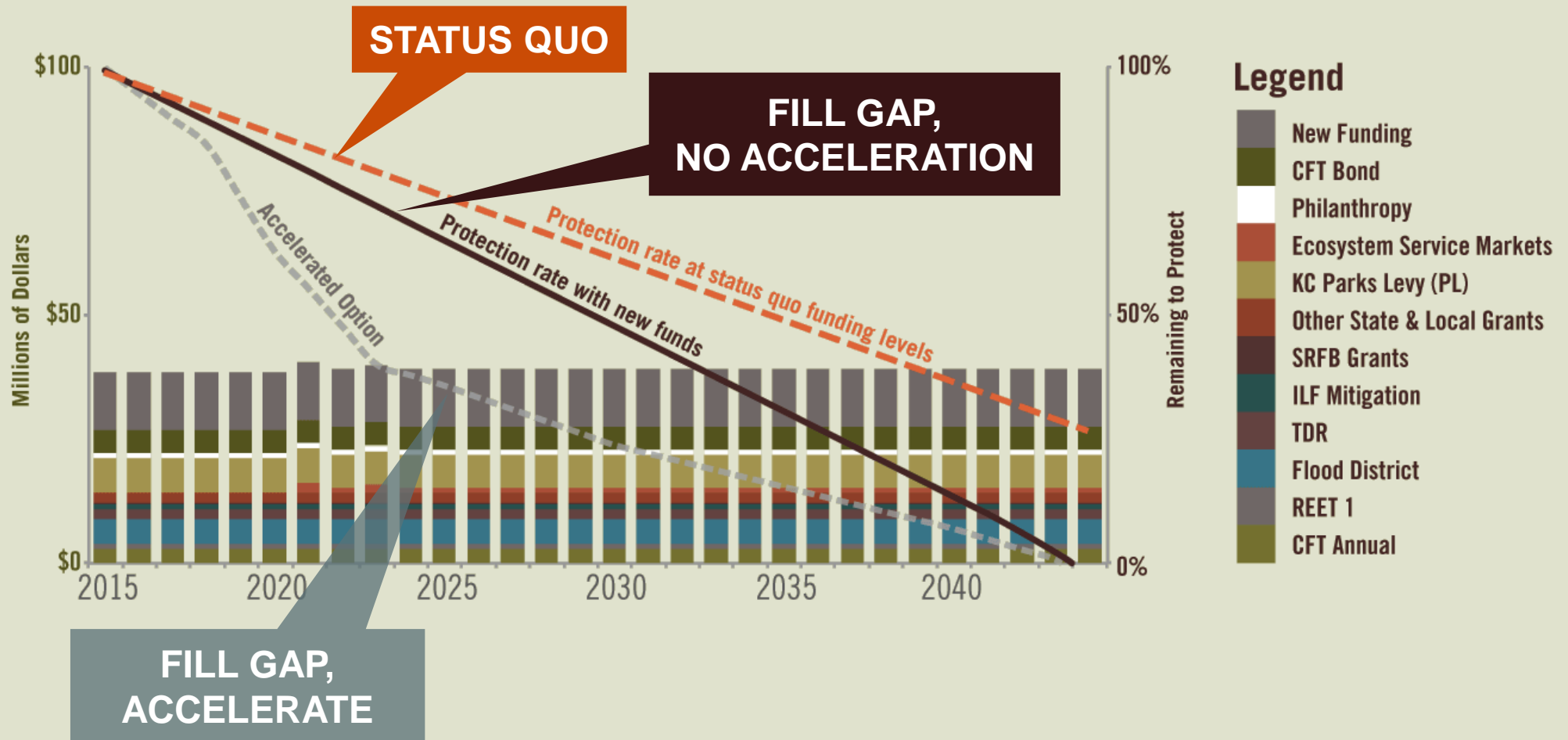
- Cost estimate is for one of several possible scenarios; costs may be higher or lower depending on preferred option.
- This estimate is based on a 20-year acquisition timeline; providing basic O&M at service level 3 out of 4 possible levels; and leaving Current Use Taxation-enrolled properties with a low or medium-low risk of withdrawal in CUT rather than acquired. We do not have city acquisition data for 6 cities; using a \$30 million placeholder for Open Space Equity. Includes inflation.
- Existing public funding sources are presented in relative order of certainty, moving clockwise from the 12:00 position.

Financial Model Scenarios

Strategies to adjust the size and scope:



Conservation Funding Outlook - Full Funding with Accelerated Option



Projections are conceptual examples, based on data in original 2016 work plan

Potential Funding Options to Fill the Gap

Public Funding Sources:

- Bond backed by property tax increase
- Property Tax Levy Lid Lift
- CFT rate increase - property tax
- REET 3 (Real Estate Excise Tax)
- Adjustments to King County Parks Levy

Private Funding Sources

- Philanthropy
- Environmental markets
- Private Investments

2017 Work Program

- Phase 1 Advisory Group Report (Feb. 2017)
- Phase 2 Staff Work (through Sept. 2017)
 - *City Engagement*
 - *Community Engagement*
 - *Open Space Equity Analysis*
 - *Private Funding Opportunities*
 - *Buildable Lands Impacts*
 - *Parks Levy Planning*
 - *Update Cost/Funding Model*
 - *Develop Targets/Metrics*
- Phase 2 Advisory Group (Sept.-Nov. 2017)
- Final Report to Executive (Dec. 2017)

Website: <http://kingcounty.gov/land-conservation>





Community Engagement

More than 60 meetings with community & organizations

- American Whitewater
- CARE community group
- Conservation Finance Network
- Eastside Audubon
- Evergreen Mountain Biking Association
- Fall City Community Association
- Fall City Metropolitan Park District
- Fall City Stakeholder Group
- Forterra
- Four Creeks UAC
- Futurewise
- Green River Coalition
- Green Valley Lake Holms Community Association
- Green-Duwamish WAG Open Space Committee
- Green-Duwamish Workshop
- Issaquah Alps
- KC Parks Directors
- KC Planning Directors
- King County Agriculture Commission
- King County Rural Forest Commission
- Kokanee Work Group
- Maple Valley UAC
- Master Builders
- Mountains to Sound Greenway Board
- North Cities Meeting in Bothell
- North Highline UAC
- PCC Farmland Trust
- Pierce County Council work group
- Pierce County Staff
- Rainier Audubon Society
- Raging River Conservation Group
- Regional Open Space Advisory Committee
- Regional Open Space Conference
- Sammamish Forum
- Seattle Foundation
- Seattle-King County Public Health
- Snoqualmie Valley Government Association
- Snoqualmie Valley Preservation Alliance
- Social Venture Partners
- Sound Cities Association City Managers Meeting
- Sound Cities Association Pre-PIC meeting
- South King County Sierra Club
- The Nature Conservancy staff
- The Wilderness Society
- Trust for Public Land Board
- Trout Unlimited
- Upper Bear Creek Meeting
- UW Equity and the Urban Forest presentation
- Vashon Maury Island Land Trust Board
- Washington Environmental Council
- Washington Native Plant Society
- Washington State Department of Natural Resources
- Water Tenders
- West Hill Community Association
- WRIA 7 Forum
- WRIA 7 Snoqualmie Cities Meeting
- WRIA 8 Implementation Committee
- WRIA 9 Implementation Technical Committee

Open Space Equity Analysis

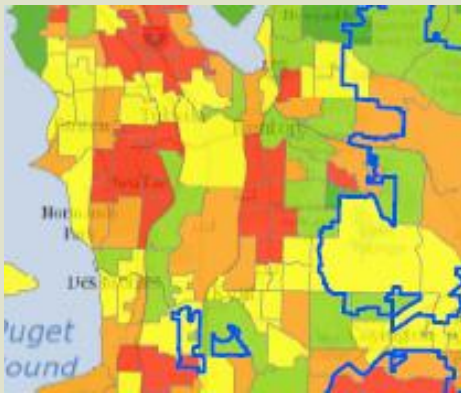
How measures generally correspond to Open Space Equity Score

MEASURE	“VERY HIGH PRIORITY” OPEN SPACE EQUITY SCORE	“VERY LOW PRIORITY” OPEN SPACE EQUITY SCORE
Open Space Access	Less access 	More access 
Health/Hospitalizations	Less healthy 	More healthy 
Household income	Lower income 	Higher income 
Racial diversity	More diverse 	Less diverse 
Language diversity	More language diversity 	Less language diversity 

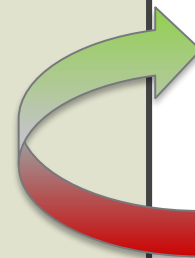
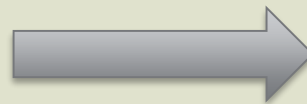
Open Space Equity Process

PROCESS :

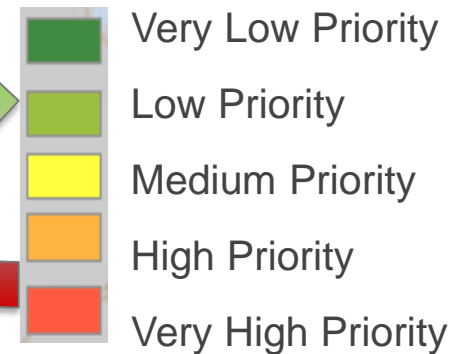
1. Understand where inequities exist now;
2. Work with communities and partners to identify ways land conservation can address inequities;
3. Establish achievable metrics and goals;
4. Strategic funding for conservation to address inequities within a certain timeframe.



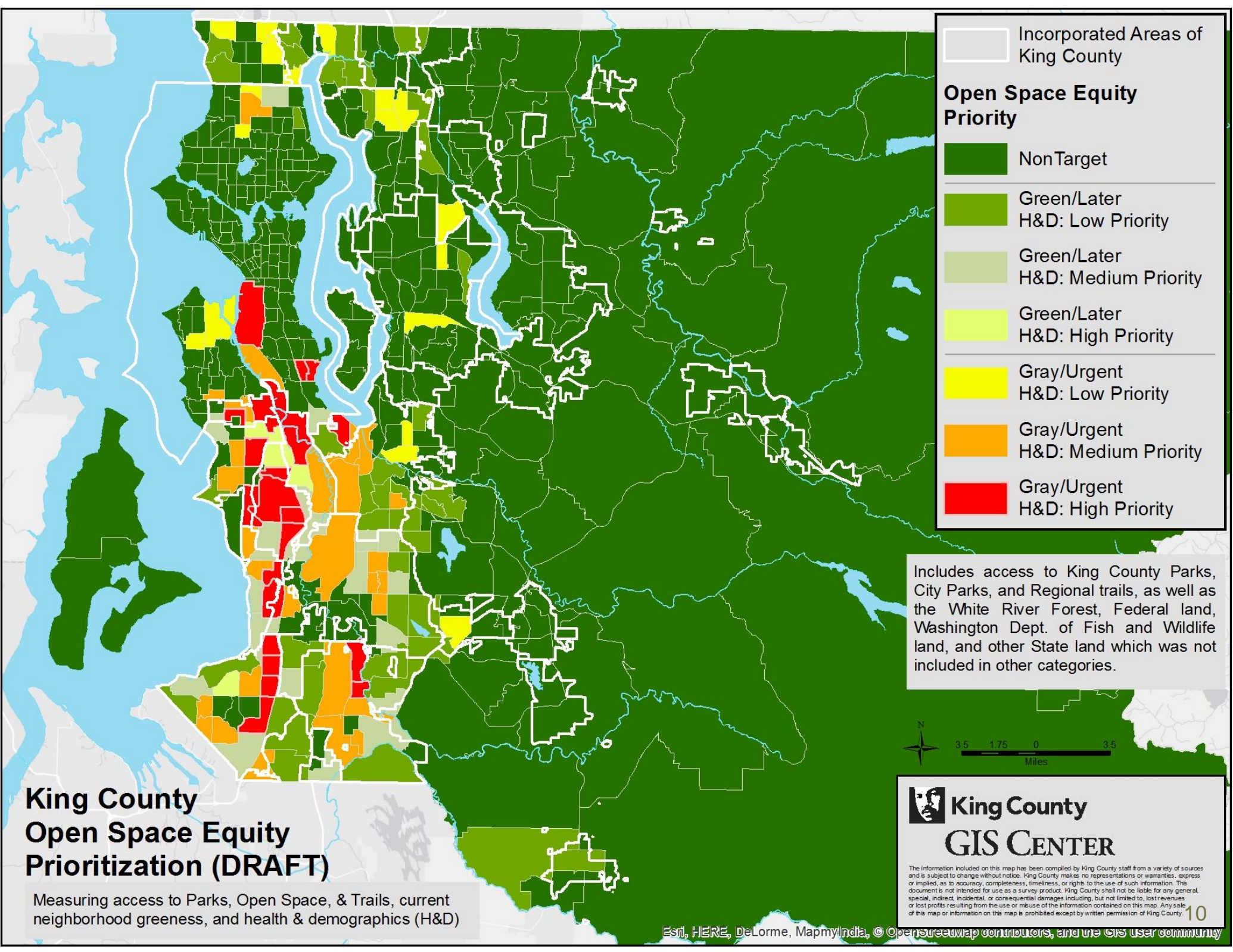
DISPARITIES



Open Space Equity Score



EQUITY



Incorporated Areas of King County

Open Space Equity Priority

- NonTarget
- Green/Later H&D: Low Priority
- Green/Later H&D: Medium Priority
- Green/Later H&D: High Priority
- Gray/Urgent H&D: Low Priority
- Gray/Urgent H&D: Medium Priority
- Gray/Urgent H&D: High Priority

Includes access to King County Parks, City Parks, and Regional trails, as well as the White River Forest, Federal land, Washington Dept. of Fish and Wildlife land, and other State land which was not included in other categories.



King County GIS CENTER

The information included on this map has been compiled by King County staff from a variety of sources and is subject to change without notice. King County makes no representations or warranties, express or implied, as to accuracy, completeness, timeliness, or rights to the use of such information. This document is not intended for use as a survey product. King County shall not be liable for any general, special, indirect, incidental, or consequential damages including, but not limited to, lost revenues or lost profits resulting from the use or misuse of the information contained on this map. Any sale of this map or information on this map is prohibited except by written permission of King County.

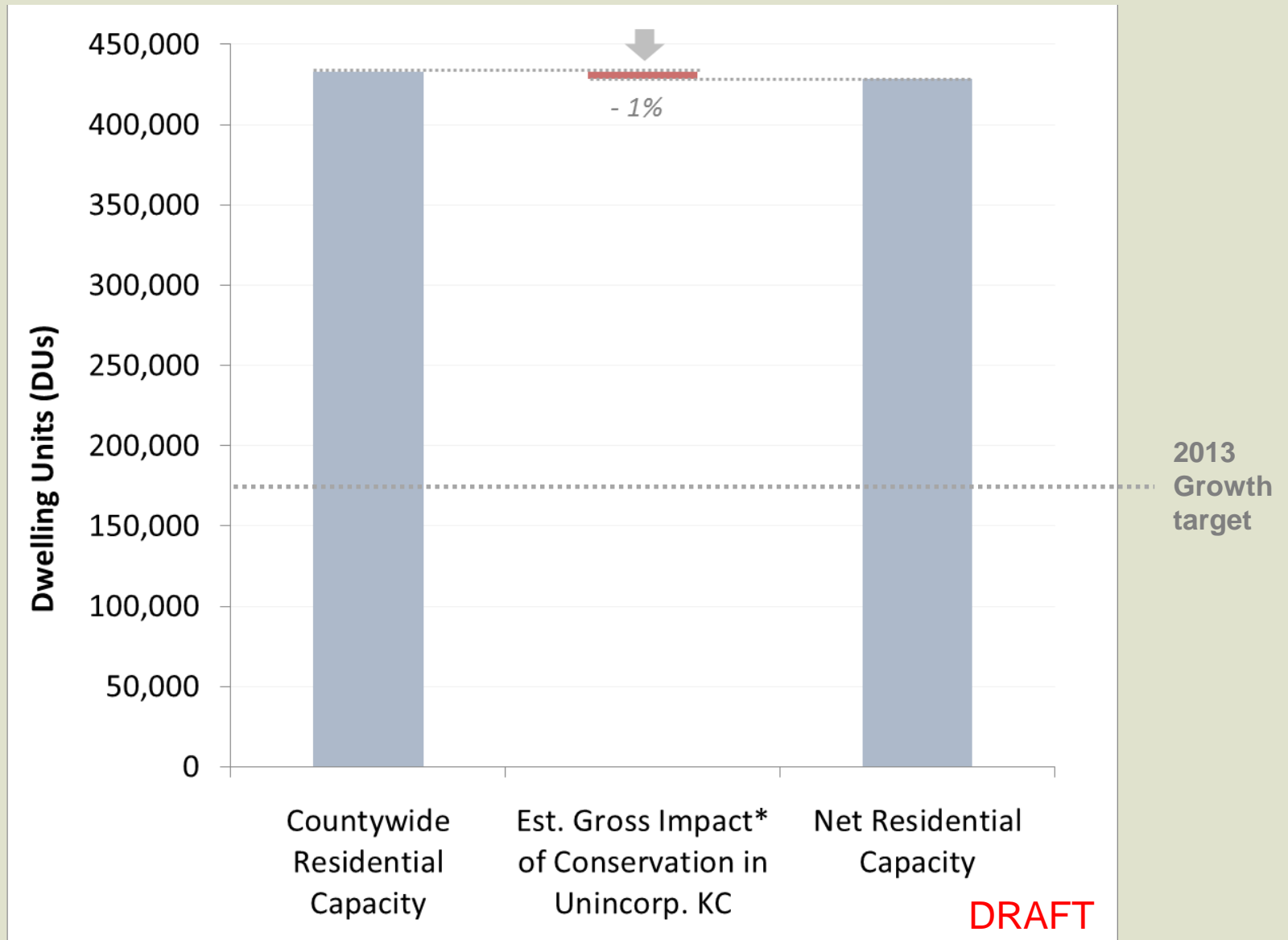
10

King County Open Space Equity Prioritization (DRAFT)

Measuring access to Parks, Open Space, & Trails, current neighborhood greenness, and health & demographics (H&D)

Buildable Lands Analysis Process

Conservation in unincorporated King County:
Minimal impact on residential capacity



* Before considering the offsetting benefits of TDR

To be updated to incorporate city priorities

Overview of Advisory Group Phase 2 Process

Meeting 1	September 21, 2017 – Bothell
Meeting 2	October 5, 2017 – Seattle
Meeting 3	October 19, 2017 – Mercer Island
Meeting 4	November 2, 2017 – Seattle
<i>Draft Report</i>	<i>Staff distribute draft report</i>
Meeting 5	November 16, 2017 - Tukwila
<i>Final Edits</i>	<i>Final edits to report</i>
<i>Report Submittal</i>	<i>Report submittal in December 2017</i>

A young child in an orange shirt and red shorts is running up a grassy hill. The sun is shining brightly from the top center, creating a lens flare effect. The sky is a clear, vibrant blue. To the left of the child, there is a small, young tree with green leaves. The hill is covered in dry, golden-brown grass and some small plants.

THE TIME IS **NOW**
TO CONSERVE
KING COUNTY'S LANDS

FOR FUTURE GENERATIONS

<http://www.kingcounty.gov/conservation-advisory-group>