

Potential Code Changes:

Vehicle Parking Codes Time Limited Parking

Bellevue City Council – November 20, 2017

Presenting:

Kate Berens, Deputy City Manager

Nancy LaCombe, City Manager's Office

Monica Buck, City Attorney's Office

Direction from Council

October 23, 2017

- Return with code changes for enforcement tools
- Review parking concerns
 - 130th Avenue NE (BelRed)
 - 132nd Avenue NE (BelRed)
 - SE 41st Place (Factoria)
- Perform outreach
- Develop options for time limited parking

130th Ave NE & 132nd Ave NE



SE 41st Place



Concerns/Complaints

via MyBellevue, Transportation Records Management

- Traffic related
- Code violations
- Maintenance
- Parking
 - Blocking driveway site lines
 - Semi-parking
 - Abandoned cars
 - Vehicle residencies

Time Restricted Parking - General

- Allow for increased turnover rates
- Drop-off, pick-up, deliveries
- Visitors and customers

Outreach Plan

- Distribute survey and compile results
- Survey results back to the outreach area
- Engage Council
 - Study Session(s) for review and direction
 - Prepare legislative action - ordinance(s)

AllHome Vehicle Residency Work Group

- Convened by Interfaith Task Force on Homelessness
- Subarea groups
 - South
 - North
 - Seattle
 - East
- Developing tools, protocol, guidelines
- Working with congregations and agencies

Next Steps

- Implement modifications to the 24-hour parking code
- Monitor compliance and Enforcement
- Conduct outreach
- Continue a review of regional efforts
- Complete analysis and develop recommendation



Vehicle Residency/Public Camping Legal Background

- 4th Amendment
 - Reasonable search and seizure
- 14th Amendment
 - Due process
 - Fundamental right to travel
- 8th Amendment
 - Cruel and unusual punishment

Vehicle Parking

Existing Codes

- Constitutional limitations
- Civil infraction framework
- BCC 11.23.010 - Residential parking zones
- BCC 11.23.020 - No parking in the **same public space** for period exceeding 24-hours
- BCC 11.23.022 - Time limit zones

Seattle U

Safe Parking programs offer safety and community – two things that people living in their cars desperately need when they are trying to get their lives back together. Unfortunately, there are not enough Safe Parking programs to serve the number of people who live in their cars after they lose their homes.

Safe Parking programs give congregations a way to use their sacred land for the greater good. As the crisis of homelessness grows in our region, parking programs play a critical role in helping people who are newly homeless. Without a safe place to park, people living in cars face the daily struggle of moving from place to place, wasting precious time and resources. With early access to safety and community, people without homes can focus their energies on solving the problems that left them homeless.

Do Safe Parking programs end homelessness? No, not alone.

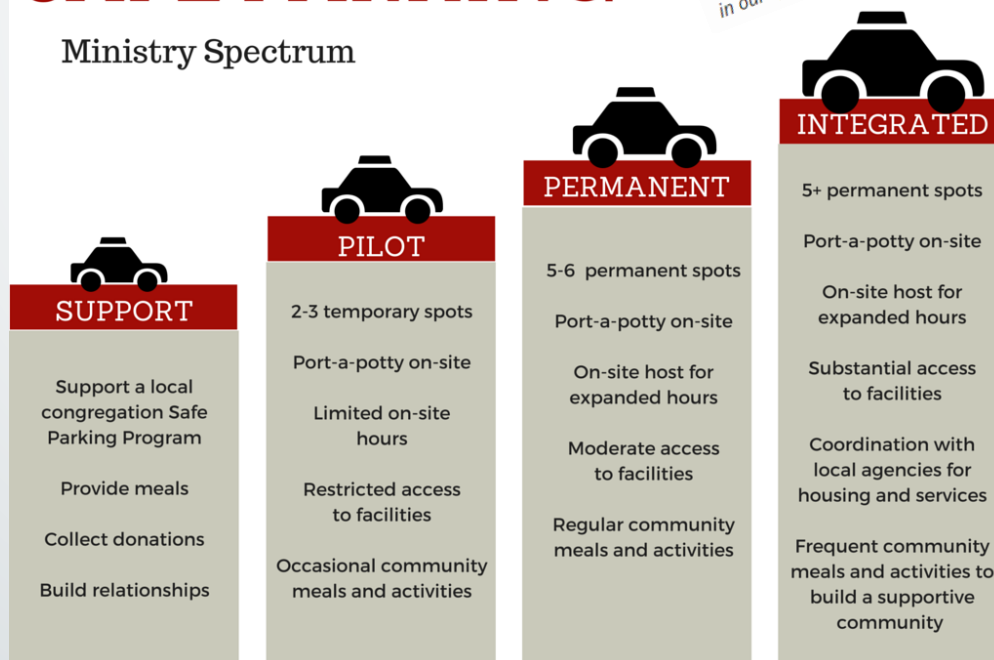
What is the cost of running a safe parking program?
This is the number one question congregations ask. Depending on the program, congregations can expect increased costs in these areas:

- Port-a-potty rental
- Garbage pick up
- Electricity (cell phones and laptops are critical tools in the hunt for affordable housing)
- Wireless internet
- Supplies (congregations that offer access to building spaces including restrooms, kitchens and other spaces)
- Community meal and activities

Tip: An experienced congregation estimates yearly cost of a “barebones” (pilot level in our spectrum) program to be \$1,200 per year.

SAFE PARKING

Ministry Spectrum



Other Considerations

Enforcement

Currently:

- One officer enforces all of Bellevue
- Diamond Parking enforces downtown time-limited
- Motor officers during normal shift

If additional time-limited restrictions

- Additional resources or services