



# ***East Link Construction Update***

**City Council Study Session**

**Dec. 4, 2017**

***Maher Welaye***

**Engineering Manager**

**Transportation Department**

***Mike Brennan***

**Director**

**Development Services Department**

***Marie Jensen***

**East Link Community Relations**

**Transportation Department**

***John Murphy***

**Associate Planner**

**Transportation Department**

# Topics

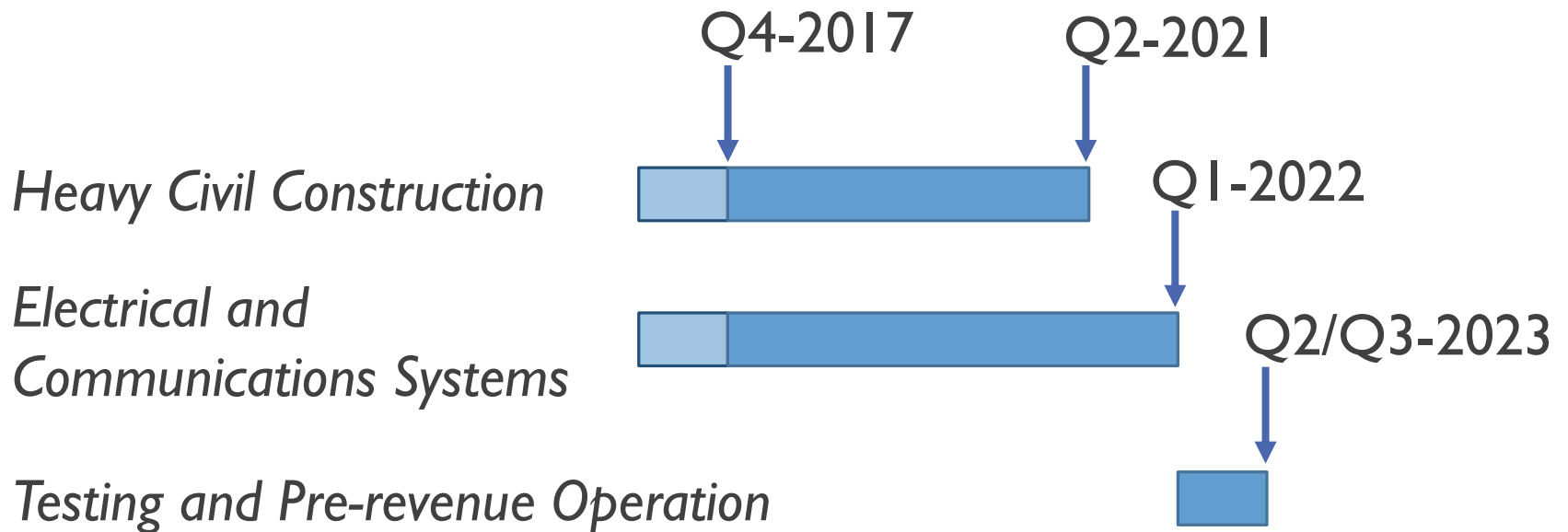
---

- Major East Link construction activities
- Update on permitting as they relate to regulating noise and other construction activity
- Status of the traffic mitigation pilot program in south Bellevue
- City communications and outreach for East Link; community feedback

*We are providing this for your information; no council action or direction is sought.*

# East Link Construction Schedule (construction in Bellevue)

---







South Bellevue





South Bellevue





**South Bellevue**





Central Bellevue





Central Bellevue





# Central Bellevue





**Bel-Red**





**Bel-Red**





**Bel-Red**



# Permits

---

## Transition from Design and Mitigation Permits to Technical Permits

- Building
- Right of Way
- Clearing and Grading
- Utility

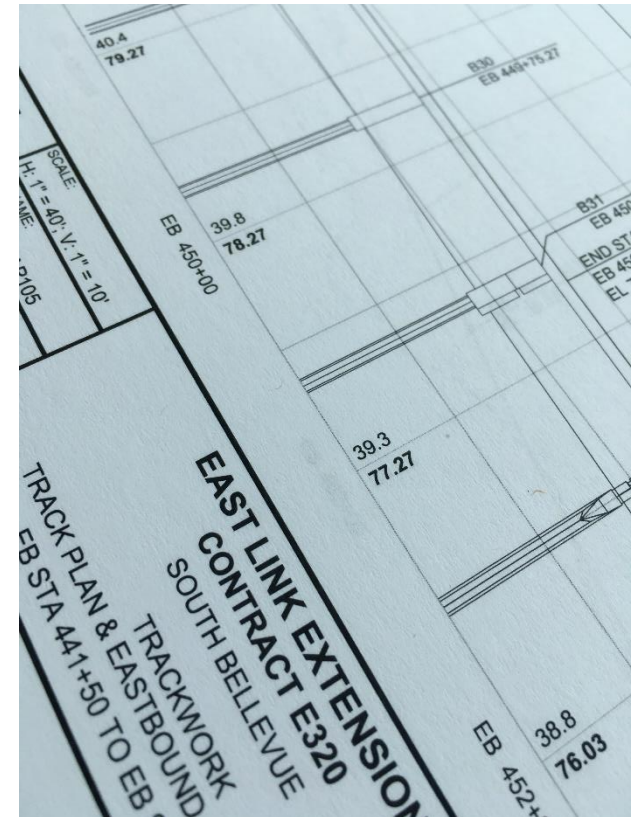




# Permits Conditions & City Codes

---

- Construction hours
- Noise exceptions
- Permanent noise walls
- Erosion control
- Traffic control





# Inspection Oversight

---

Ensuring contractors are meeting obligations

- Daily city inspections
- Coordination with Sound Transit inspectors
- Weekly contractor meetings
- Correcting violations





# Challenges

---

- Noise
- Weather (erosion control)
- City Hall impacts
- Keeping the public informed
- Traffic management



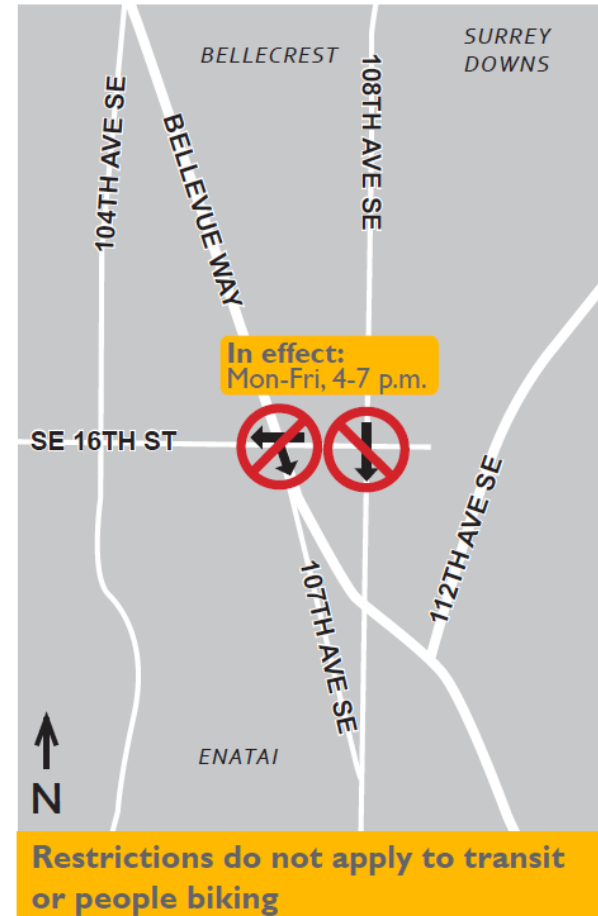


# Neighborhood Traffic Mitigation: Pilot Program

## Goal:

*Discourage traffic from using neighborhood streets during East Link construction*

Pilot started Sept. 5





# Pilot Results

---

*Traffic volumes are down*

## Evaluation

- Traffic volumes
- Operations
- Community feedback





# Community feedback

---

- Positive effects seen
- Additional burden
- Inconvenient
- Exemption desired
- Enforcement is critical

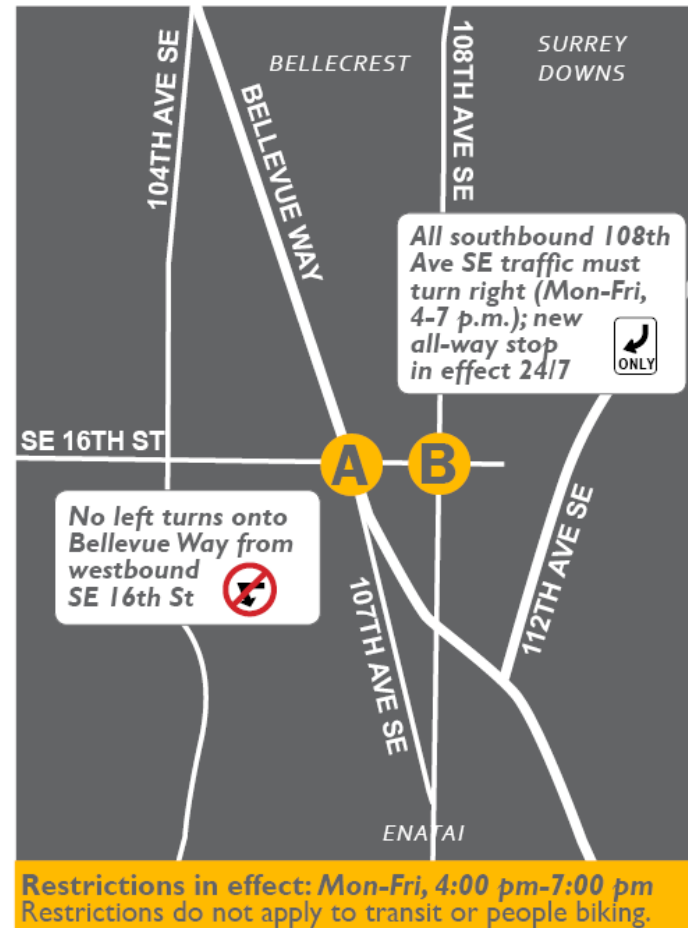




# Forthcoming Changes to Pilot (starting mid-December)

- Right-turn only at SE 16<sup>th</sup> St/108<sup>th</sup>
- All-way stop
- Westbound SE 16<sup>th</sup> St open

*Modifications to continue through June 2018*





# Community Feedback

## South Bellevue

- Very Minimal* {
- Park and ride closure
  - Spillover parking

- Minimal* {
- Construction noise
  - Wildlife protection/  
Mercer Slough Nature Park

- Moderate* {
- Bellevue Way/I-90 weekend closures
  - Bellevue Way roadway condition
  - Neighborhood traffic mitigation pilot

## Central Bellevue

- Minimal* {
- City Hall construction
  - Construction noise
  - Employee and customer access to downtown buildings
  - NE 2<sup>nd</sup> Street bike detour; displaced parking

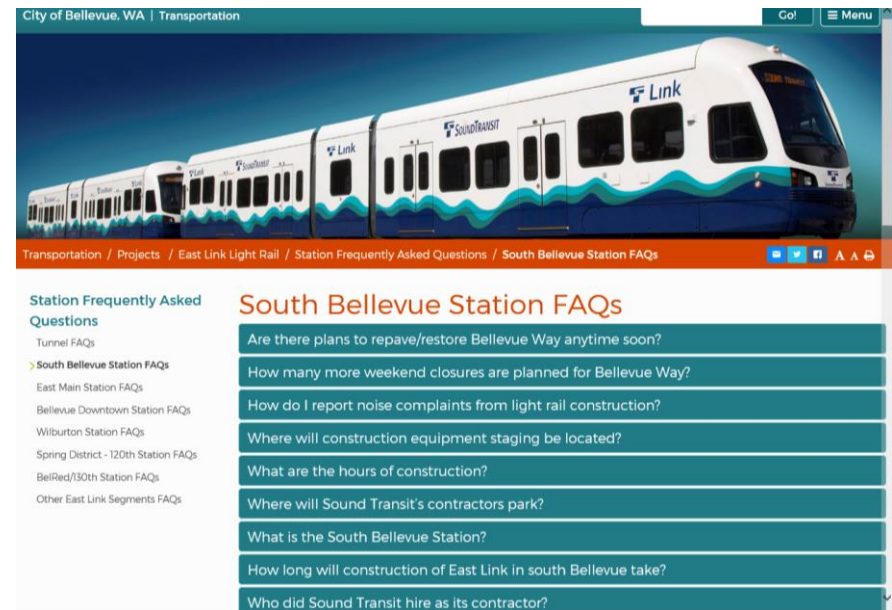
## BelRed

- Minimal* {
- Access to businesses

# City Communications

## ONGOING

- Current news and FAQ webpages
- Email/text updates (listserv)
- Twitter and Nextdoor
- Neighborhood News
- *It's Your City* newsletter



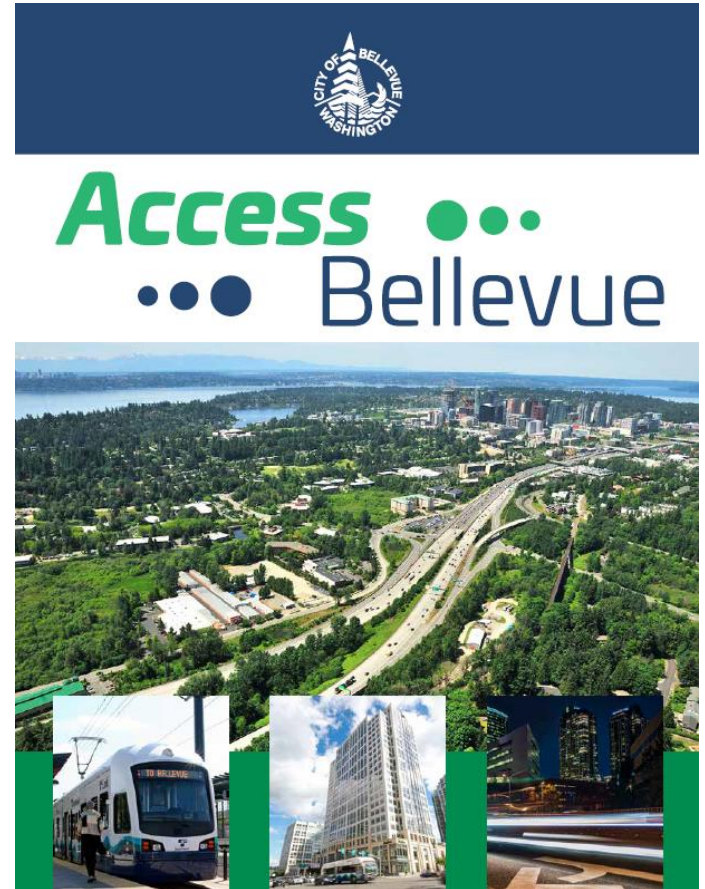


# City Communications

---

## UPCOMING

- Construction noise
- Milestone construction
- Mitigation map
- Pilot program community update
- *Access Bellevue* mailer



# Collaboration & Opportunities

---





# Questions

---

*No council action or direction  
is requested tonight*

