



# Wilburton – Grand Connection

---

## Charrette Briefing and Study Area Boundary

April 11<sup>th</sup>, 2016– Council Study Session

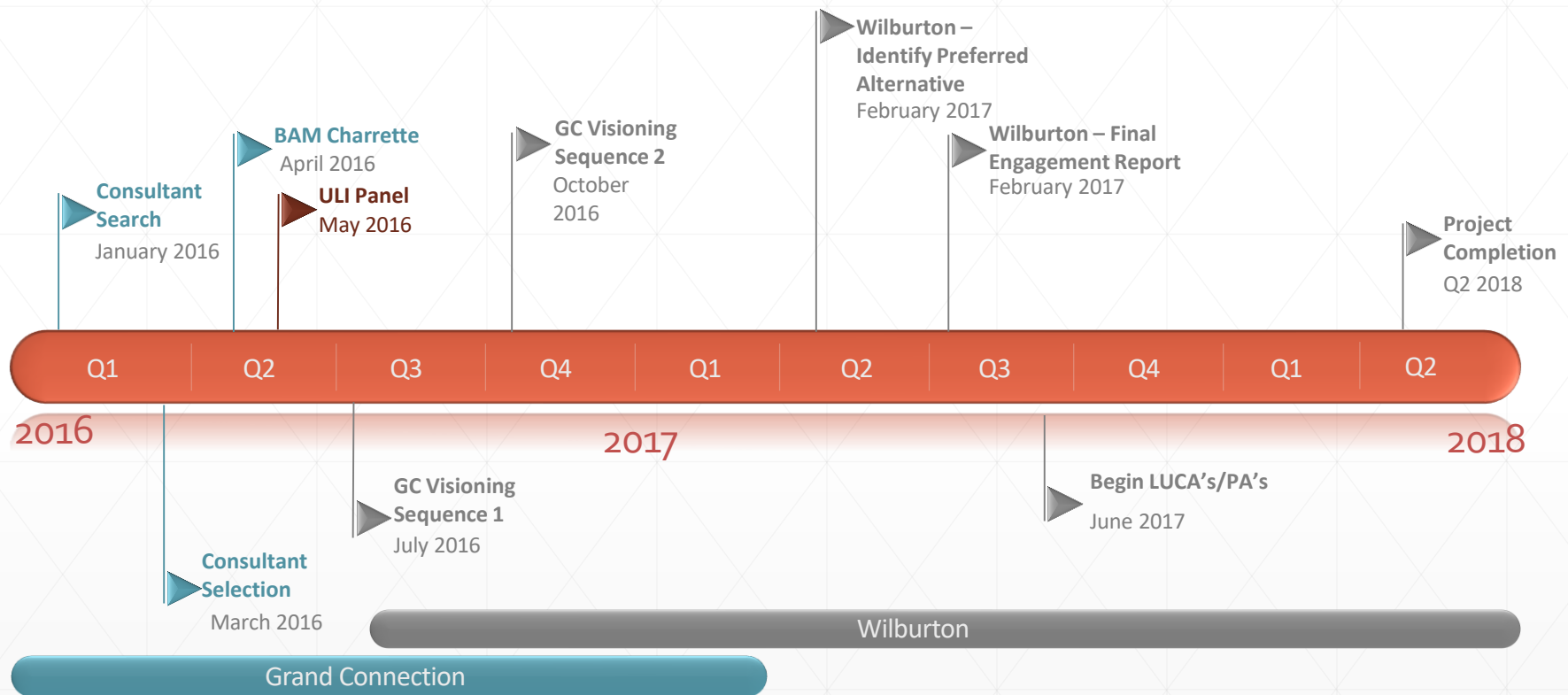
Bradley Calvert – Community Development Program Manager

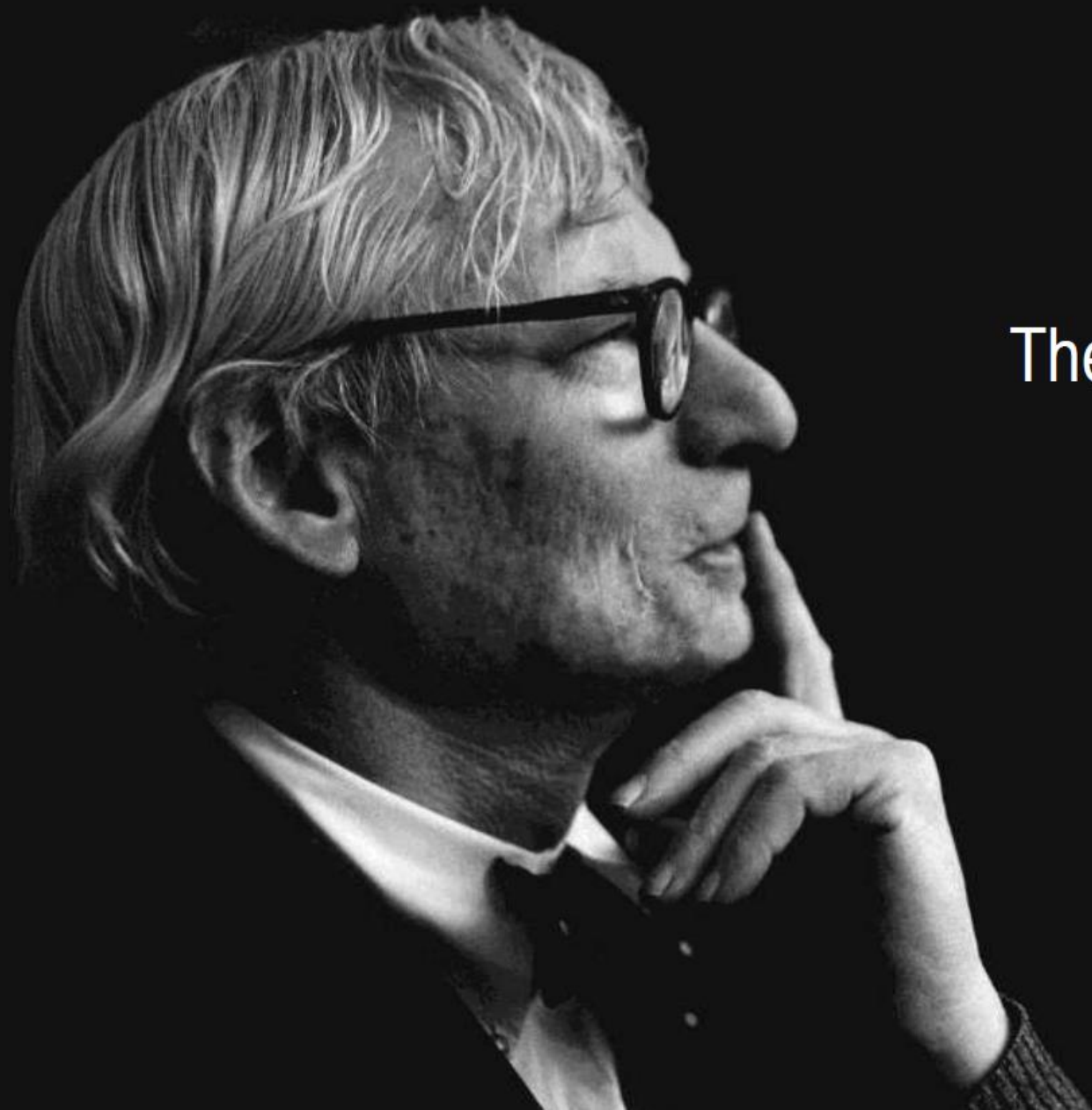
Dan Stroh – Planning Director

# Tonight's Topics

- Grand Connection Visioning Charrette Recap
- Grand Connection Visioning – Consultant Update
- Wilburton Study Area Boundary
  - Staff seeks direction on requests to expand boundary

# Where We Are





# The Grand Connection Visioning Charrette



ART | CRAFT | DESIGN  
BELLEVUE ARTS MUSEUM

# Grand Connection Charrette

- 3 Day Event

- Kick off meeting
- 1.5 Days of Design Work
- Public Open House

- Nearly 80 Participants

- Baylis Architects
- Bohlin Cywinski Jackson
- CollinsWoermann
- Framework
- Mithun
- MG2
- Olson Kundig
- University of Washington
- Washington State University
- ZGF Architects

# Grand Connection Charrette

- 8 teams
- The Charrette Challenge
  - Establish an overall identity for the route
  - Develop placemaking ideas for an assigned segment
  - Develop ideas around the I-405 crossing to the ERC
- Considerations
  - Art
  - Recreation
  - Connectivity
  - Sustainability

# Grand Connection Charrette

- Urban Design Roundtable Discussions with Charles Montgomery
  - Author of *Happy City: Transforming Our Lives Through Urban Design*
- Balmori Associates
  - Stakeholder Focus Groups and One on One Meetings
- Public Open House
  - Team Presentations
  - Keynote speech from Charles Montgomery

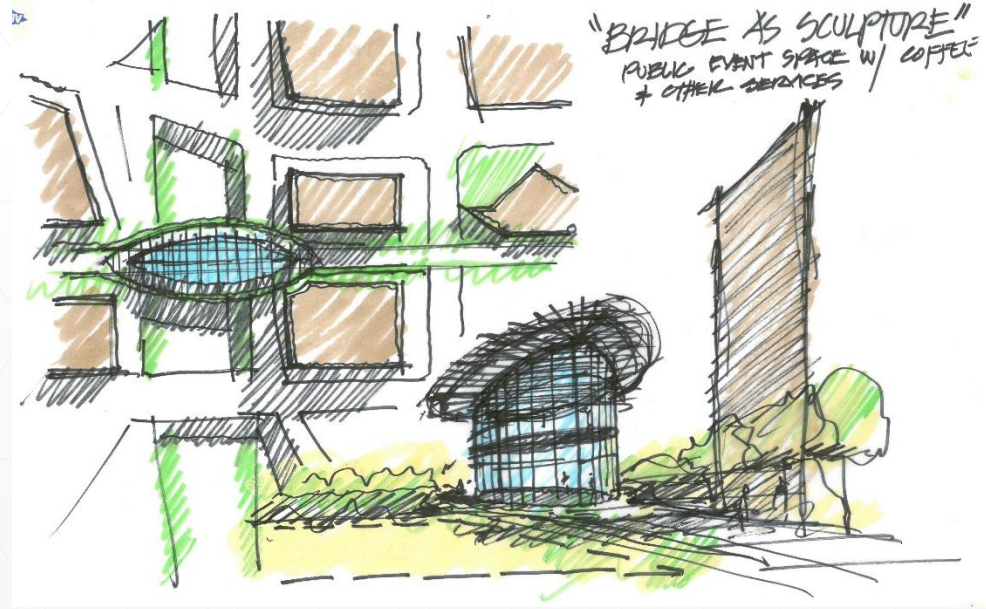
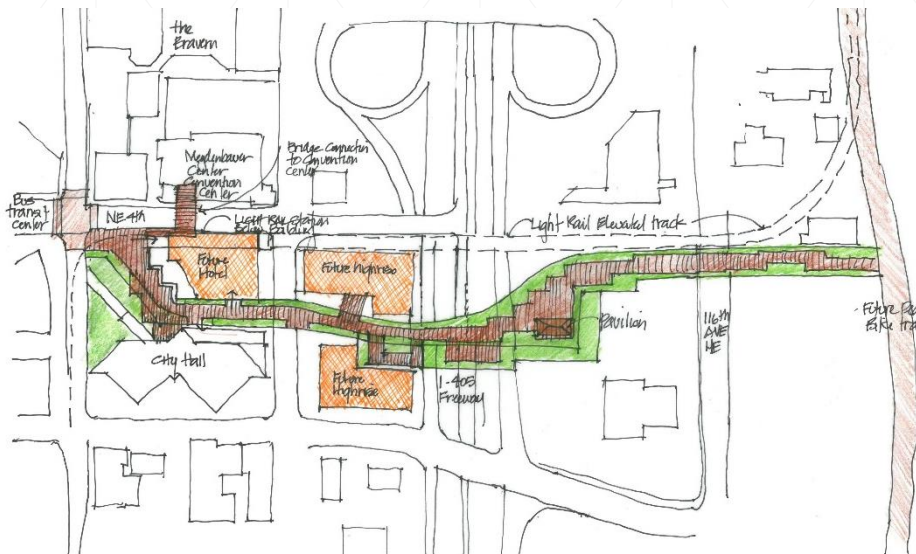


Wilburton – Grand Connection Study – December 7th, 2015



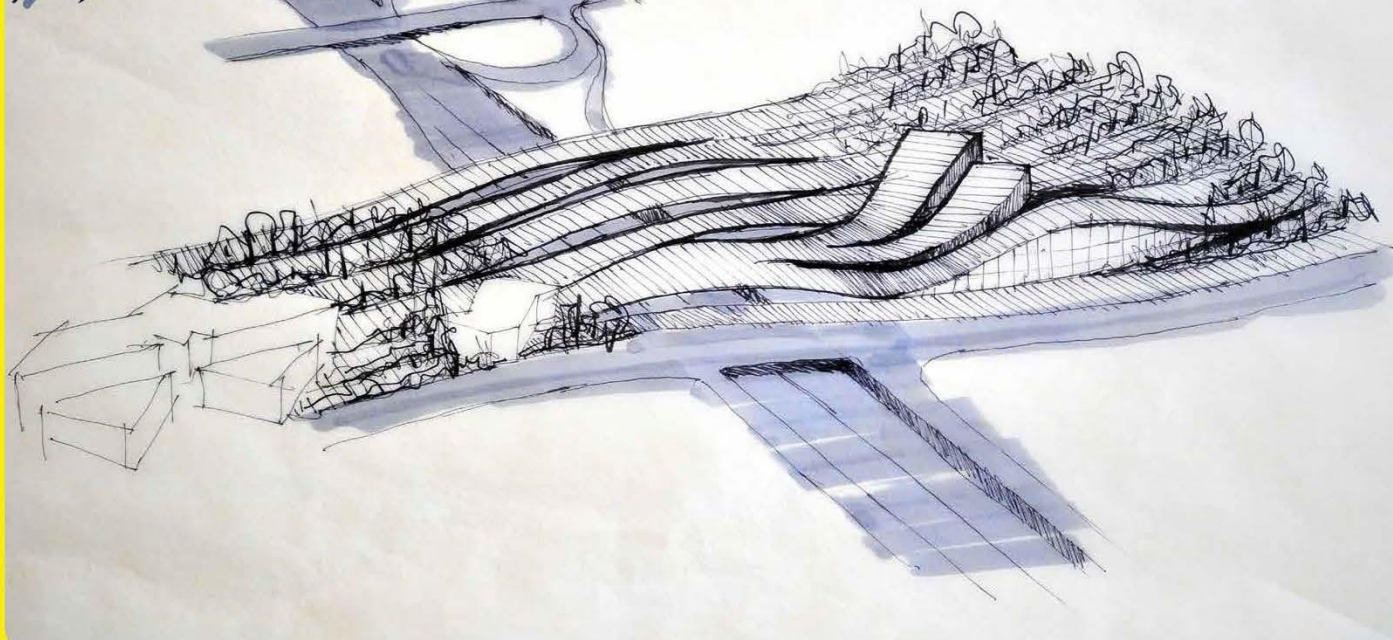


# Grand Connection Charrette





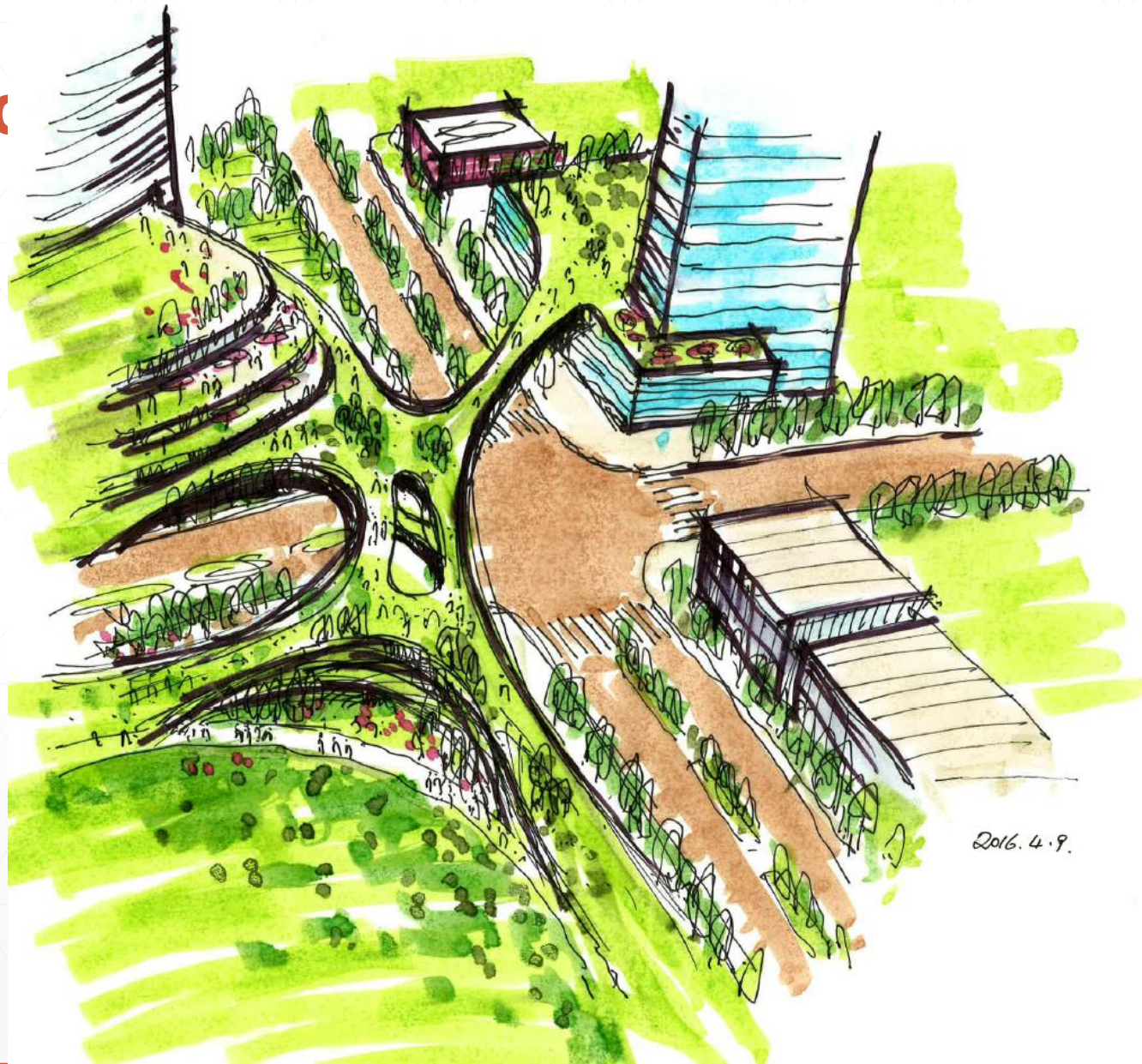
**WHOOSH!**

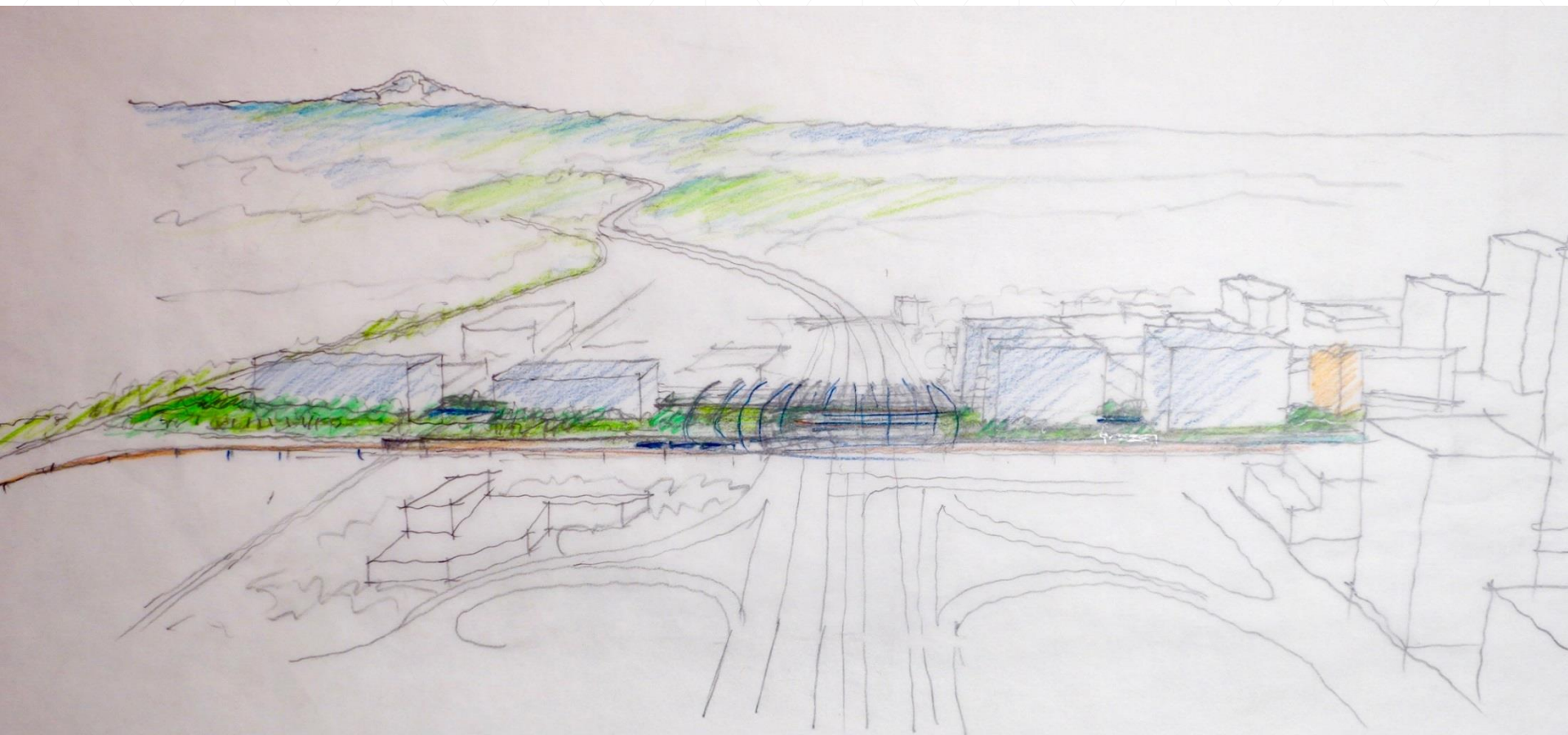


TEAM #3

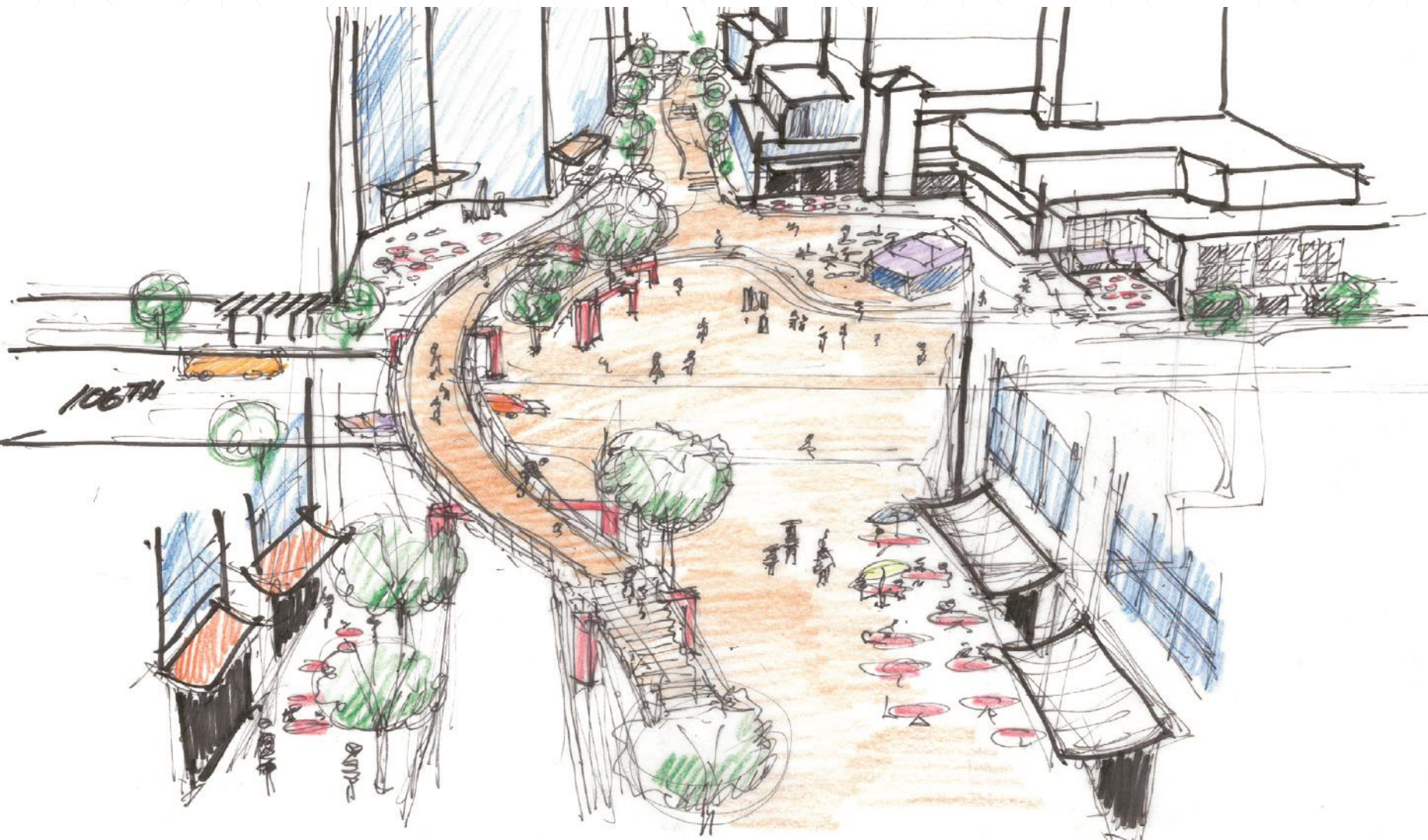


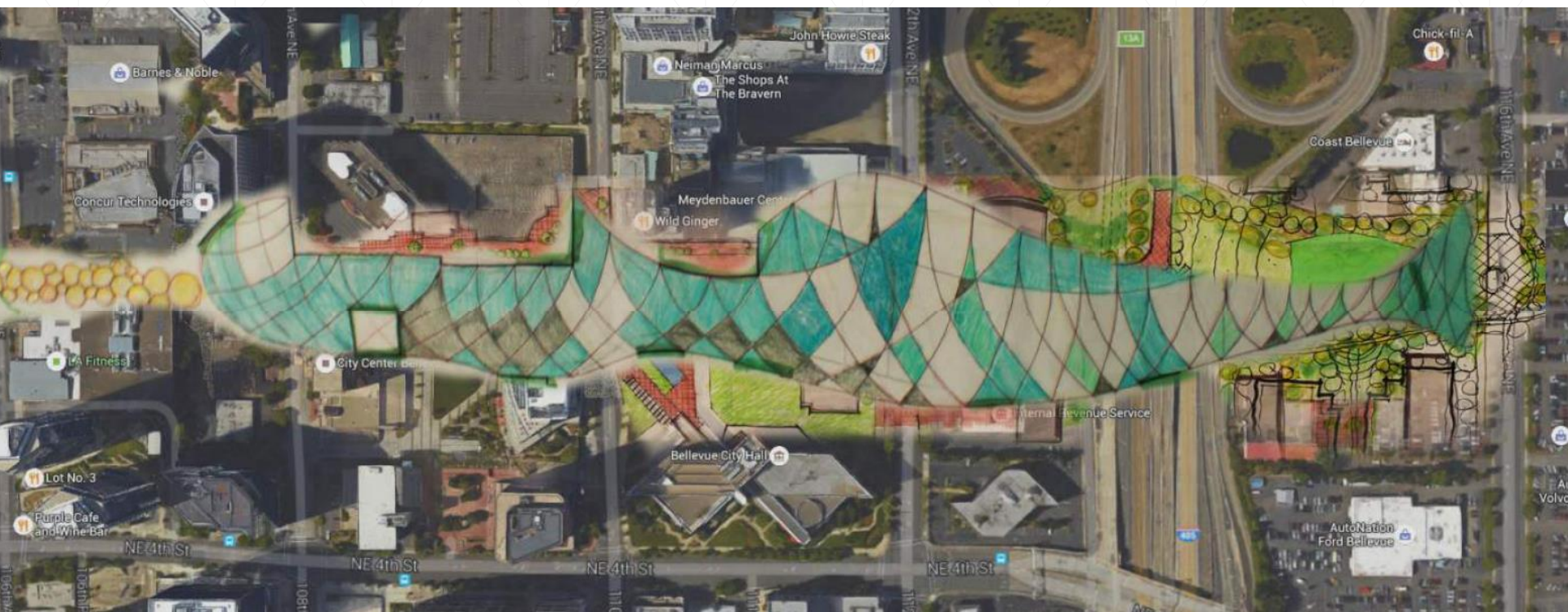
Granc













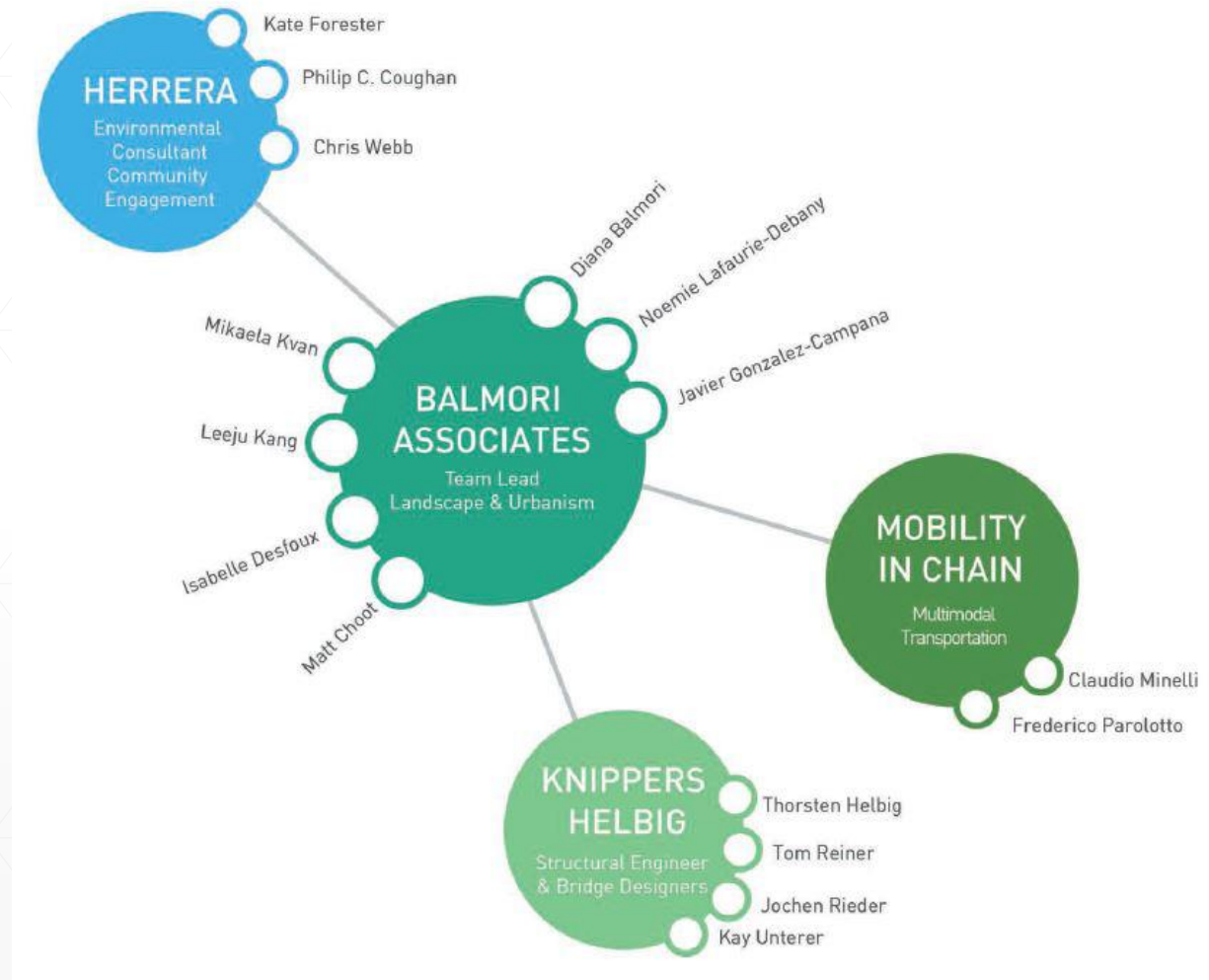


# Grand Connection Charrette

- What's Next
  - Refinement of the boards
    - A roaming gallery
  - Book
  - Inform the design consultant

# Grand Connection Visioning

- Consultant













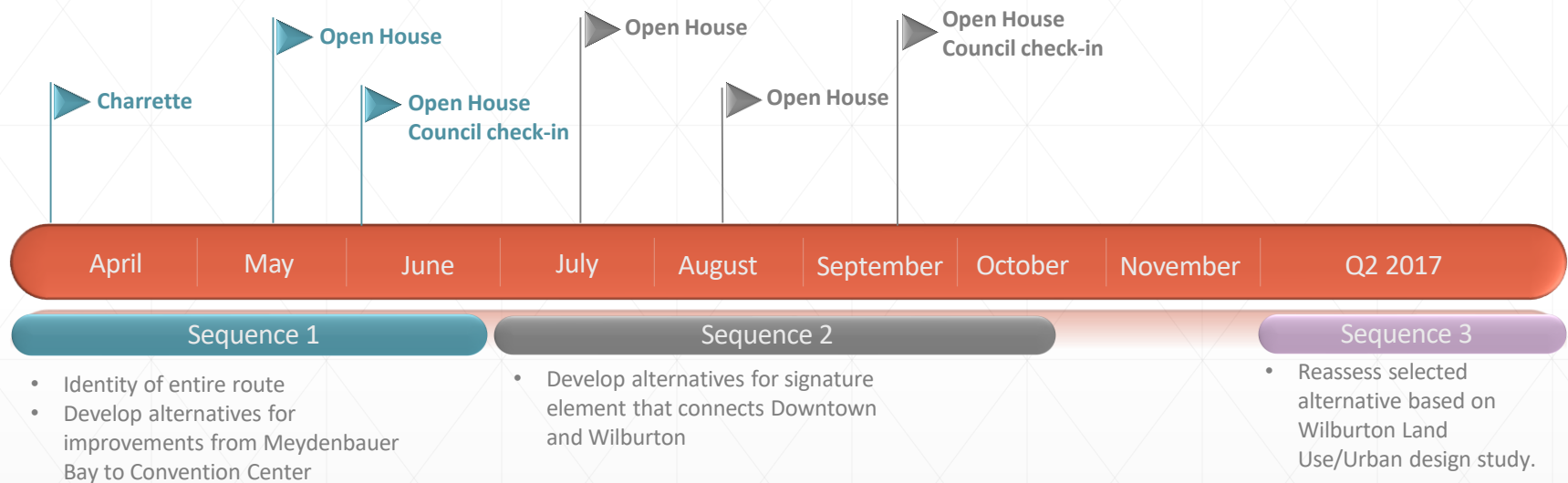
# Grand Connection Visioning

- Stakeholder Engagement
  - Focus Groups and One-on-One Meetings
- Kick off meeting 04.11.15
- Will begin Sequence 1 work



# Grand Connection Visioning

## ■ Process and Sequence of Work



# Grand Connection-Wilburton

- Next Steps
- Visioning Process Continues
- ULI National Panel – May 15<sup>th</sup>
  - Staff will be coordinating events and interview times with Council
- Grand Connection Sequence 1 – Open House (May)
- Late 2<sup>nd</sup>/Early 3<sup>rd</sup> Quarter of 2016 – Release Wilburton Land Use/Urban Design RFP

# **Wilburton Study Area Boundary**

- Original Boundary





# Wilburton Study Area Boundary

- Staff seeks Council direction on expanding the study area boundary for the Wilburton Commercial Area.