

# METRO CONNECTS

King County Metro's  
long-range vision

**More  
Choices**

**One  
System**

**More  
Service**



**Bellevue City Council  
April 25, 2016**

# Why now?

By 2040 our region will increase by:



**850k**  
jobs



**1m**  
people

**We will need a Transit system that:**

- Accommodates growth and demand
- Promotes equity and social justice
- Connects people to Link
- Reduces emissions
- Adopts emerging technologies

---

What will it take  
to respond  
to these needs?

**70%**

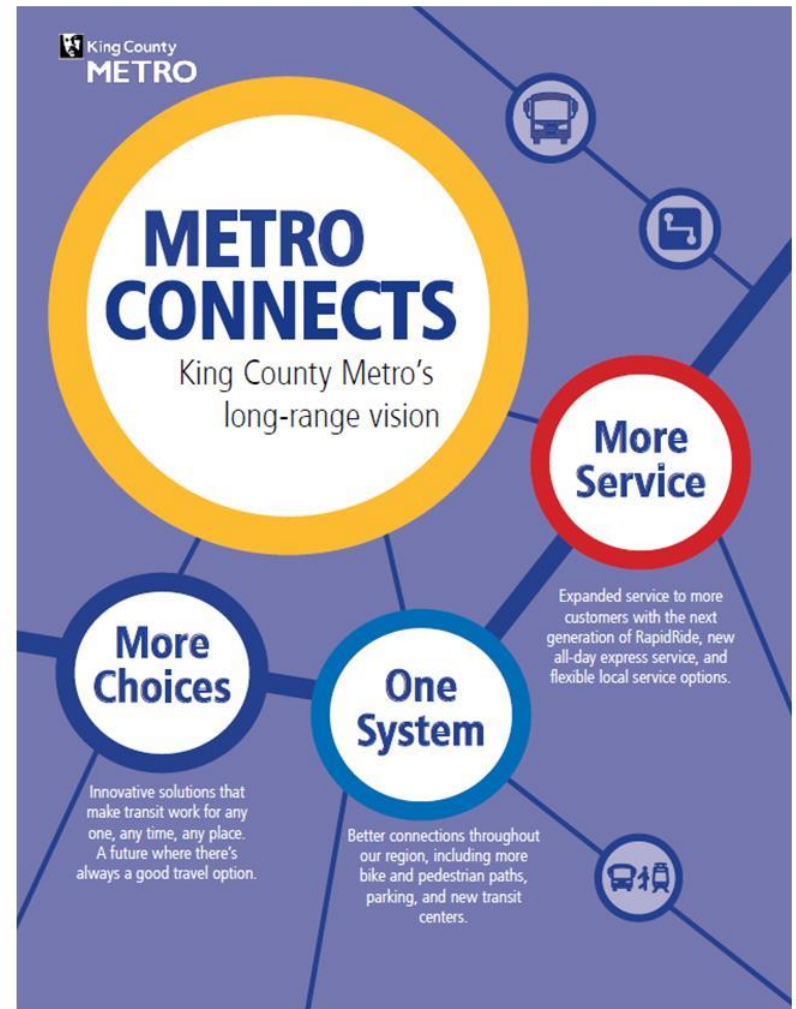
**GROWTH**

in Metro service,  
from 3.5 million  
service hours to  
6 million hours  
by 2040.

---

# Overview

- More Service
- More choices to meet many needs
- Easy, Safe, and Comfortable Travel
- Nuts and Bolts
- What we need to succeed



# Benefits Across King County



2x 

**DOUBLE** transit ridership

20%  **70%**

**TRIPLE** the percentage of people  
close to frequent service



Commuters who take transit  
grows from **14%** to **24%**



Metro buses arrive  
at Link stations every

**1.5 MINUTES**



In **LOW-INCOME** or **MINORITY**  
areas, **85%** of residents will be close  
to frequent transit service—and the  
**OPPORTUNITIES** it brings.



**EMISSIONS REDUCED.**  
300,000 fewer cars are on the  
road every weekday.

# More Service

## 2025 Service Network

### Frequent Service



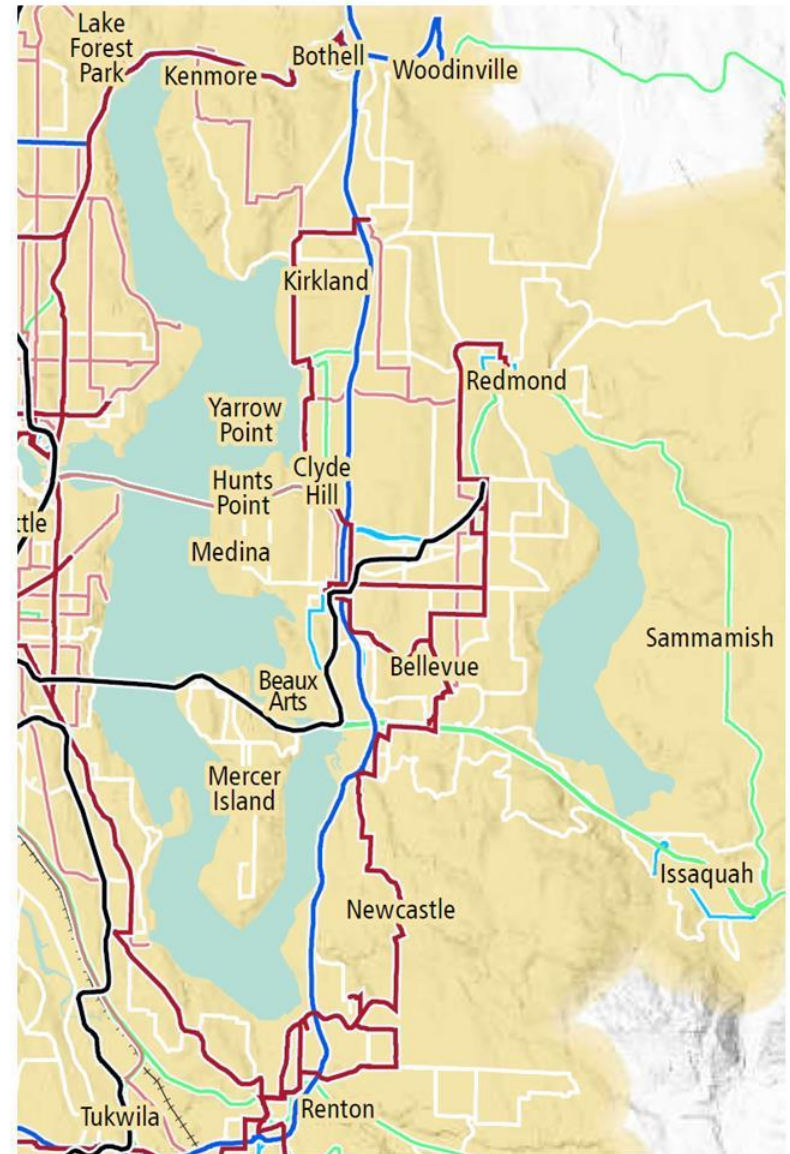
### Express Service



### Local Service



[www.kcmetrovision.org/plan/service-map](http://www.kcmetrovision.org/plan/service-map)



# More Service

## 2040 Service Network

### Frequent Service



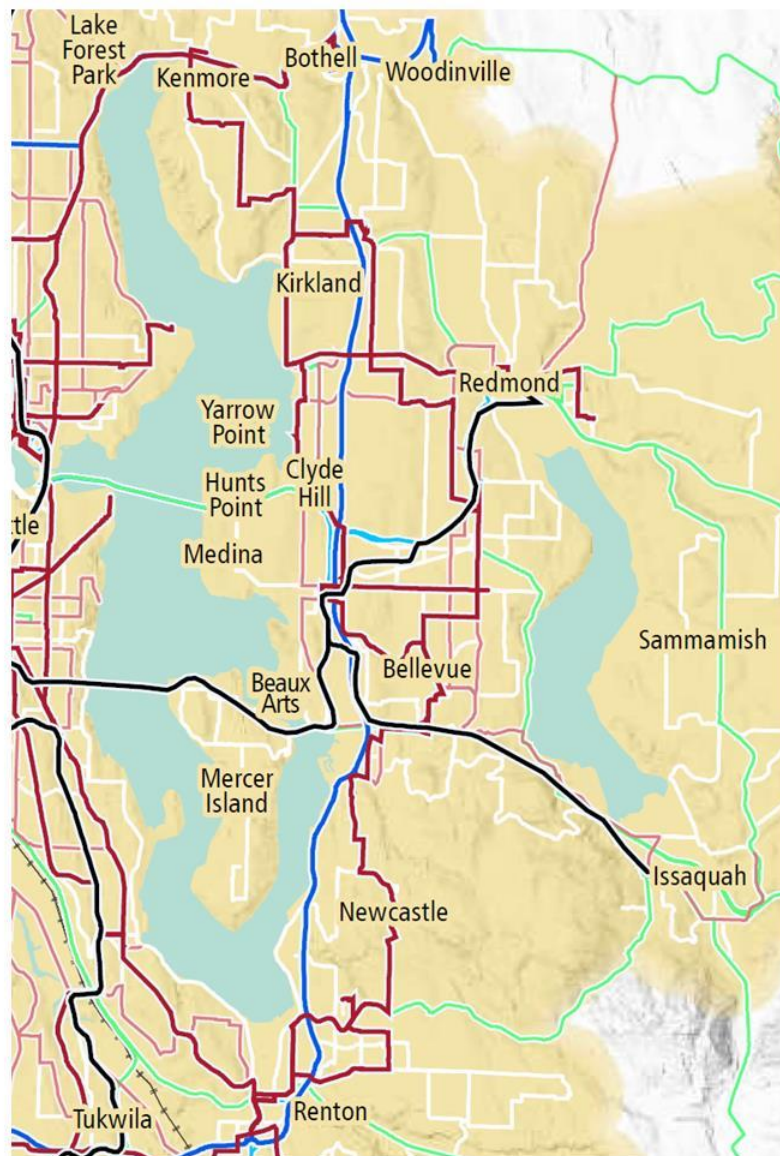
### Express Service



### Local Service



[www.kcmetrovision.org/plan/service-map](http://www.kcmetrovision.org/plan/service-map)



# How far you can go

Starting from:

**Downtown  
Bellevue**

In the year:

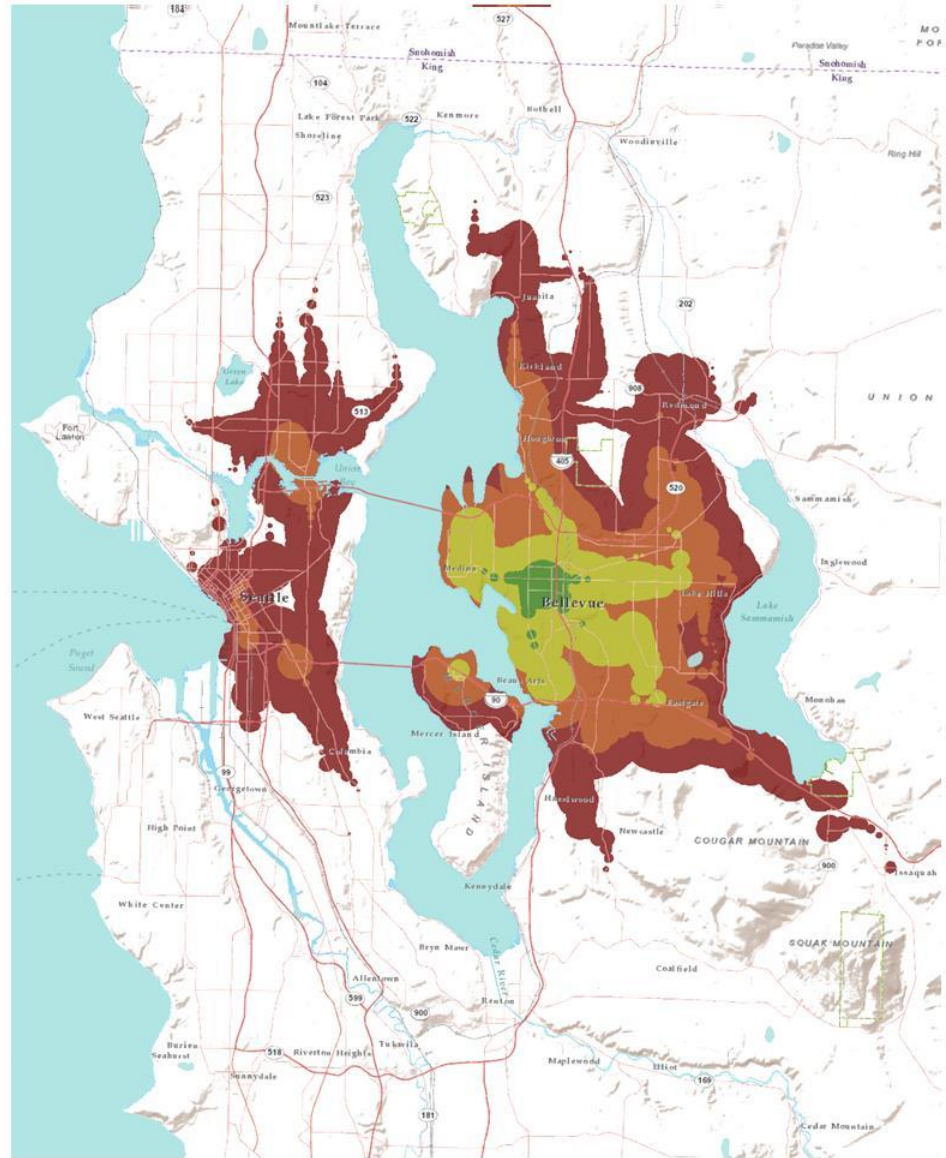
**2016**

2025

2040

- 15 minutes
- 30 minutes
- 45 minutes
- 60 minutes

Travel times include initial wait times and the average time spent waiting to transfer.  
Represents trips starting at noon on weekdays.



# How far you can go

Starting from:

**Downtown  
Bellevue**

In the year:

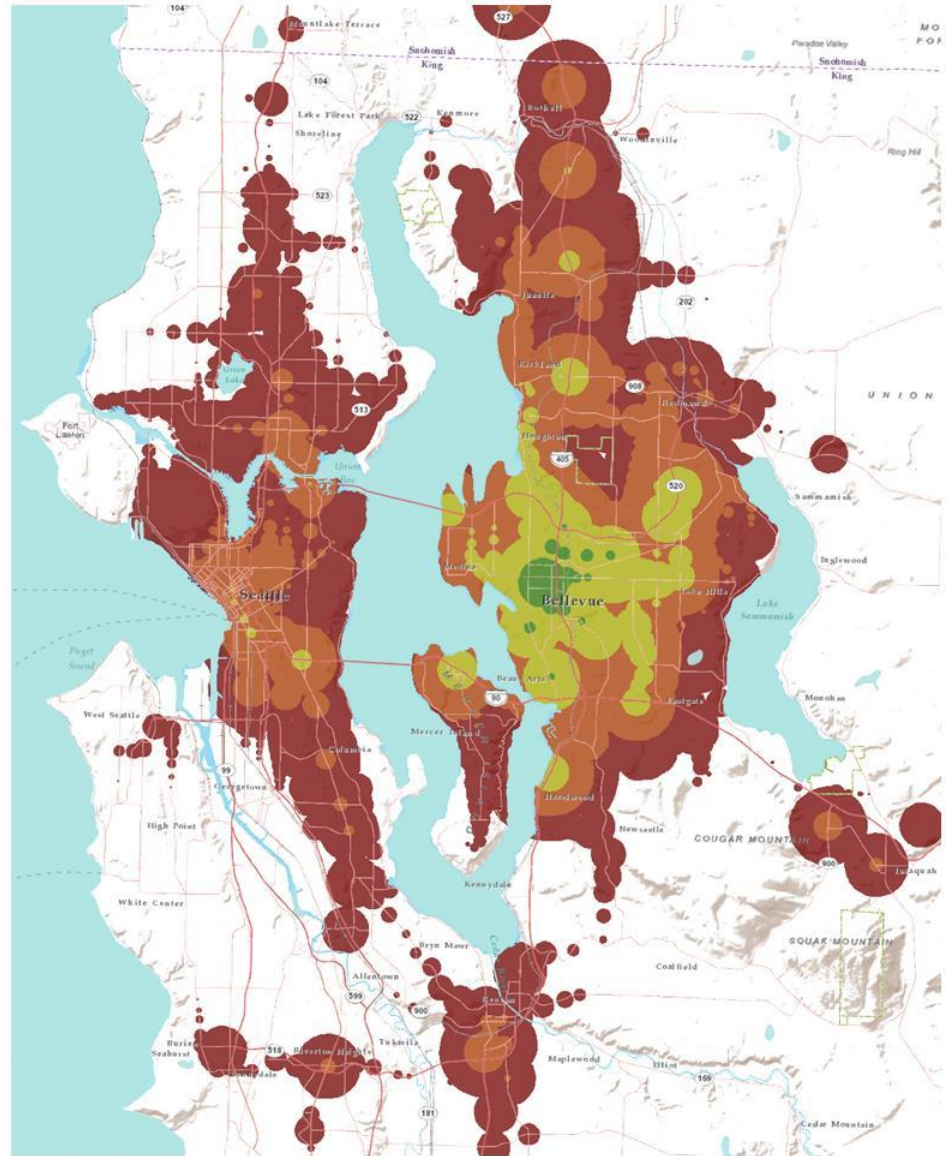
2016

**2025**

2040

- 15 minutes
- 30 minutes
- 45 minutes
- 60 minutes

Travel times include initial wait times and the average time spent waiting to transfer.  
Represents trips starting at noon on weekdays.



# How far you can go

Starting from:

**Downtown  
Bellevue**

In the year:

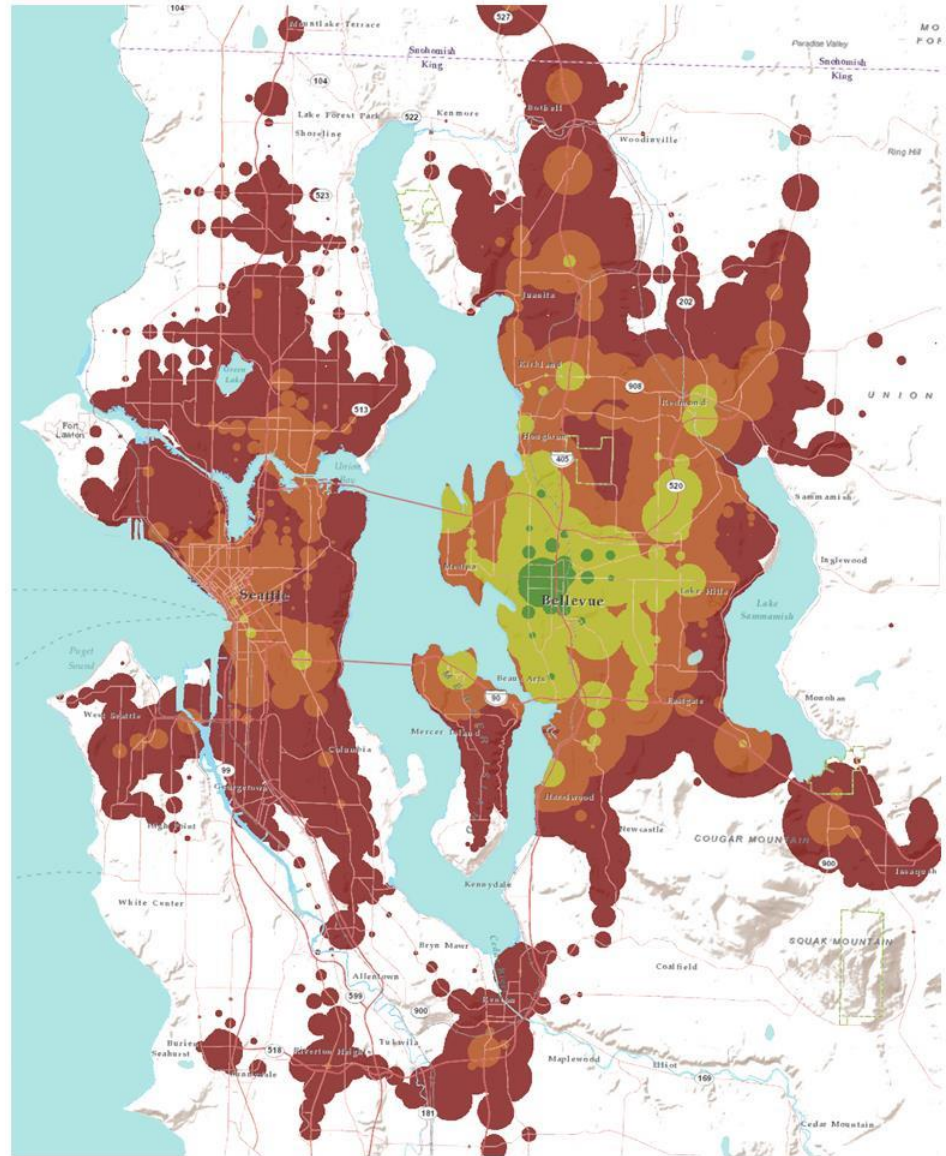
2016

2025

2040

- 15 minutes
- 30 minutes
- 45 minutes
- 60 minutes

Travel times include initial wait times and the average time spent waiting to transfer.  
Represents trips starting at noon on weekdays.



# How far you can go

Starting from:

**Eastgate  
Park-and-Ride**

In the year:

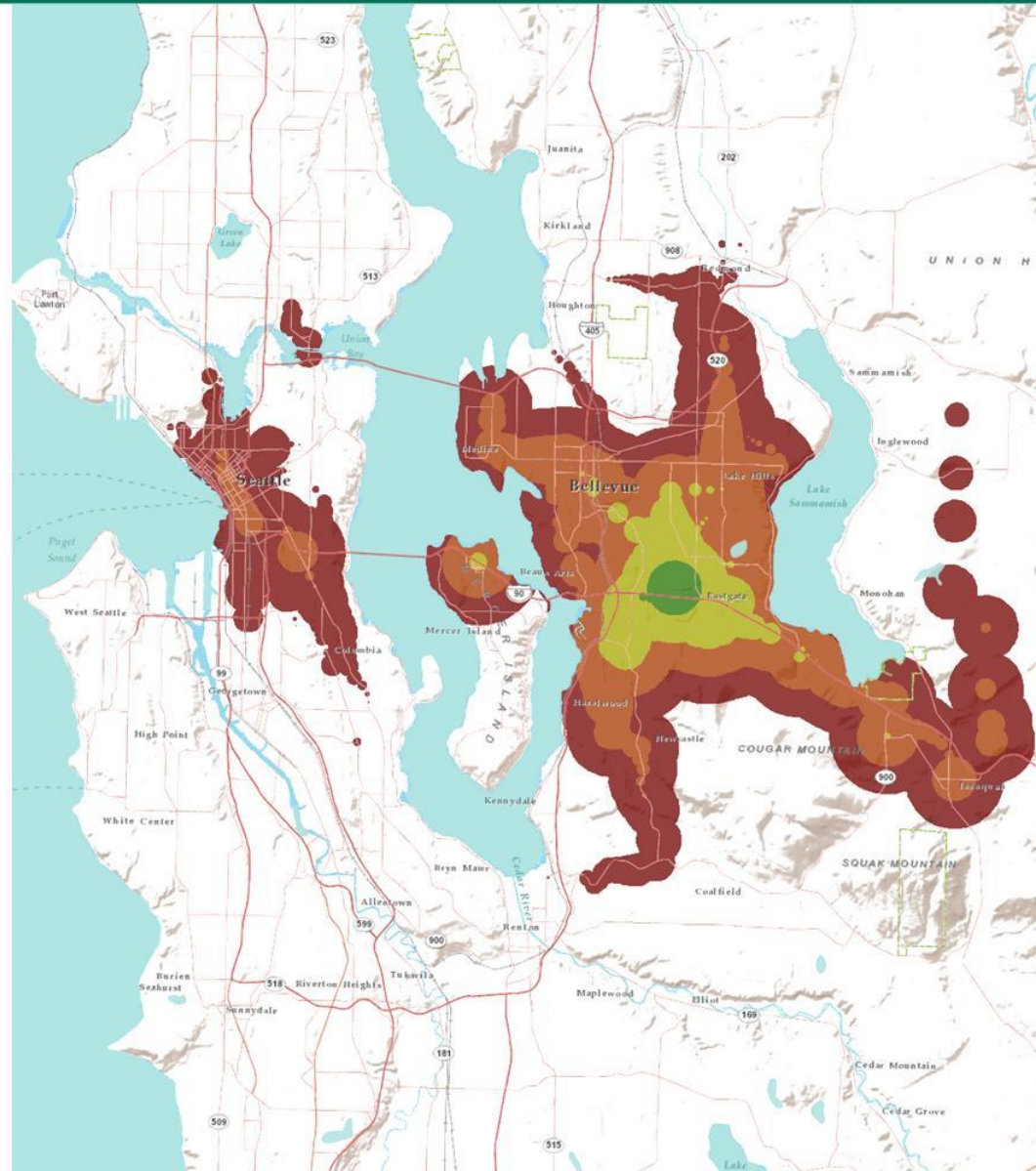
**2016**

2025

2040

- 15 minutes
- 30 minutes
- 45 minutes
- 60 minutes

Travel times include initial wait times and the average time spent waiting to transfer.  
Represents trips starting at noon on weekdays.



# How far you can go

Starting from:

**Eastgate  
Park-and-Ride**

In the year:

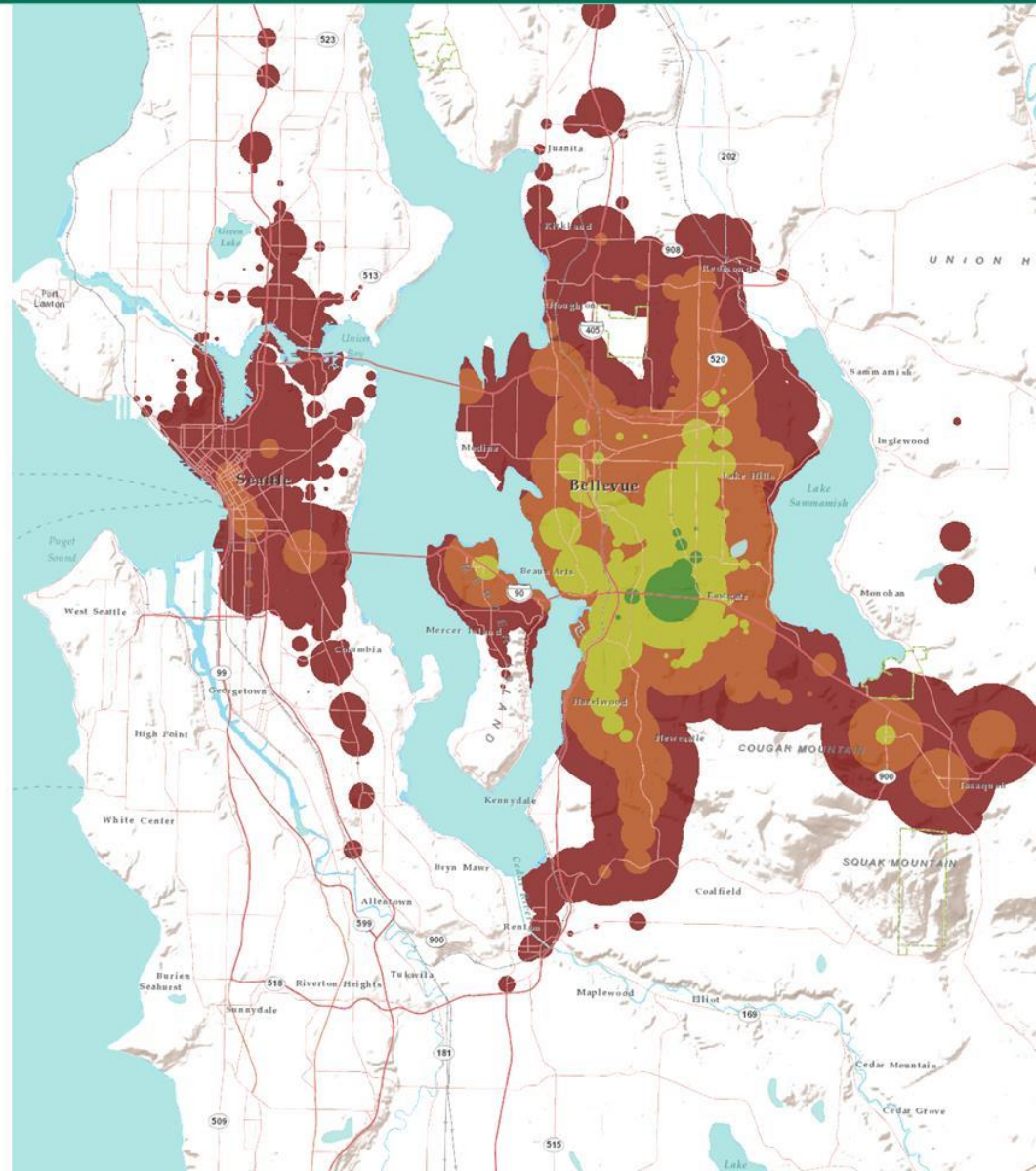
2016

**2025**

2040

- 15 minutes
- 30 minutes
- 45 minutes
- 60 minutes

Travel times include initial wait times and the average time spent waiting to transfer.  
Represents trips starting at noon on weekdays.



# How far you can go

Starting from:

**Eastgate  
Park-and-Ride**

In the year:

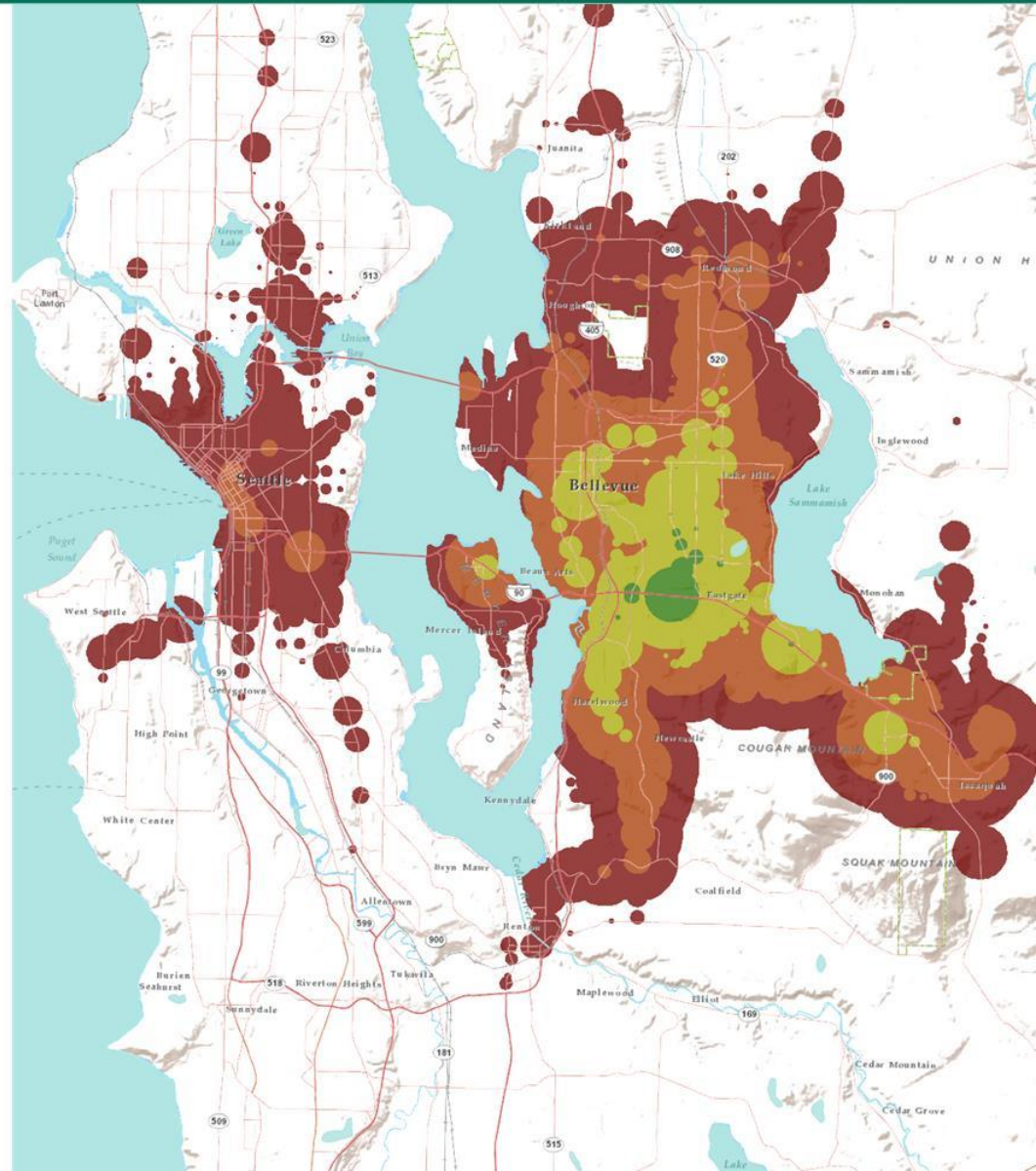
2016

2025

2040

- 15 minutes
- 30 minutes
- 45 minutes
- 60 minutes

Travel times include initial wait times and the average time spent waiting to transfer.  
Represents trips starting at noon on weekdays.



# How far you can go

Starting from:

**Factoria**

In the year:

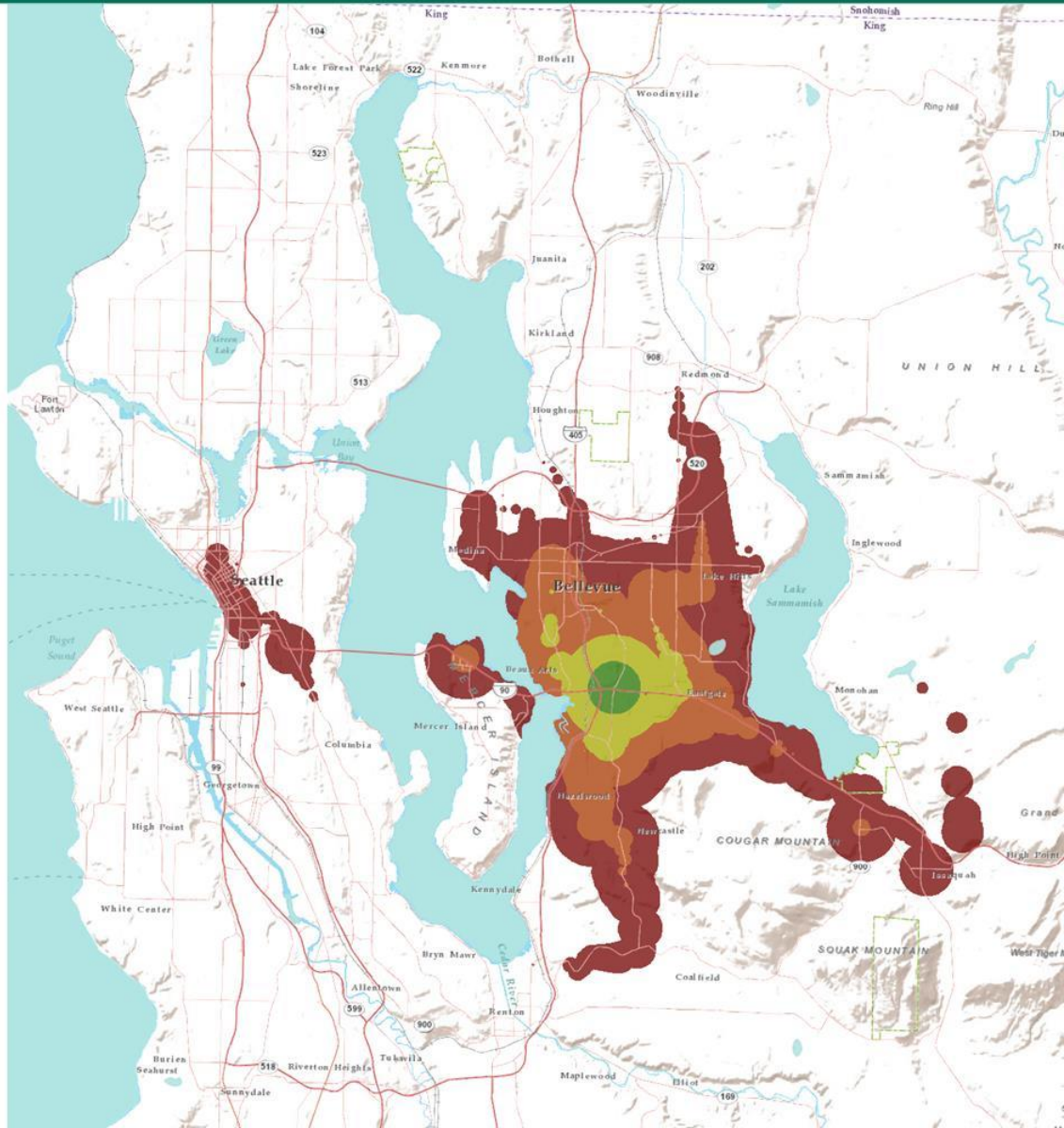
**2016**

2025

2040

- 15 minutes
- 30 minutes
- 45 minutes
- 60 minutes

Travel times include initial wait times and the average time spent waiting to transfer.  
Represents trips starting at noon on weekdays.



# How far you can go

Starting from:

**Factoria**

In the year:

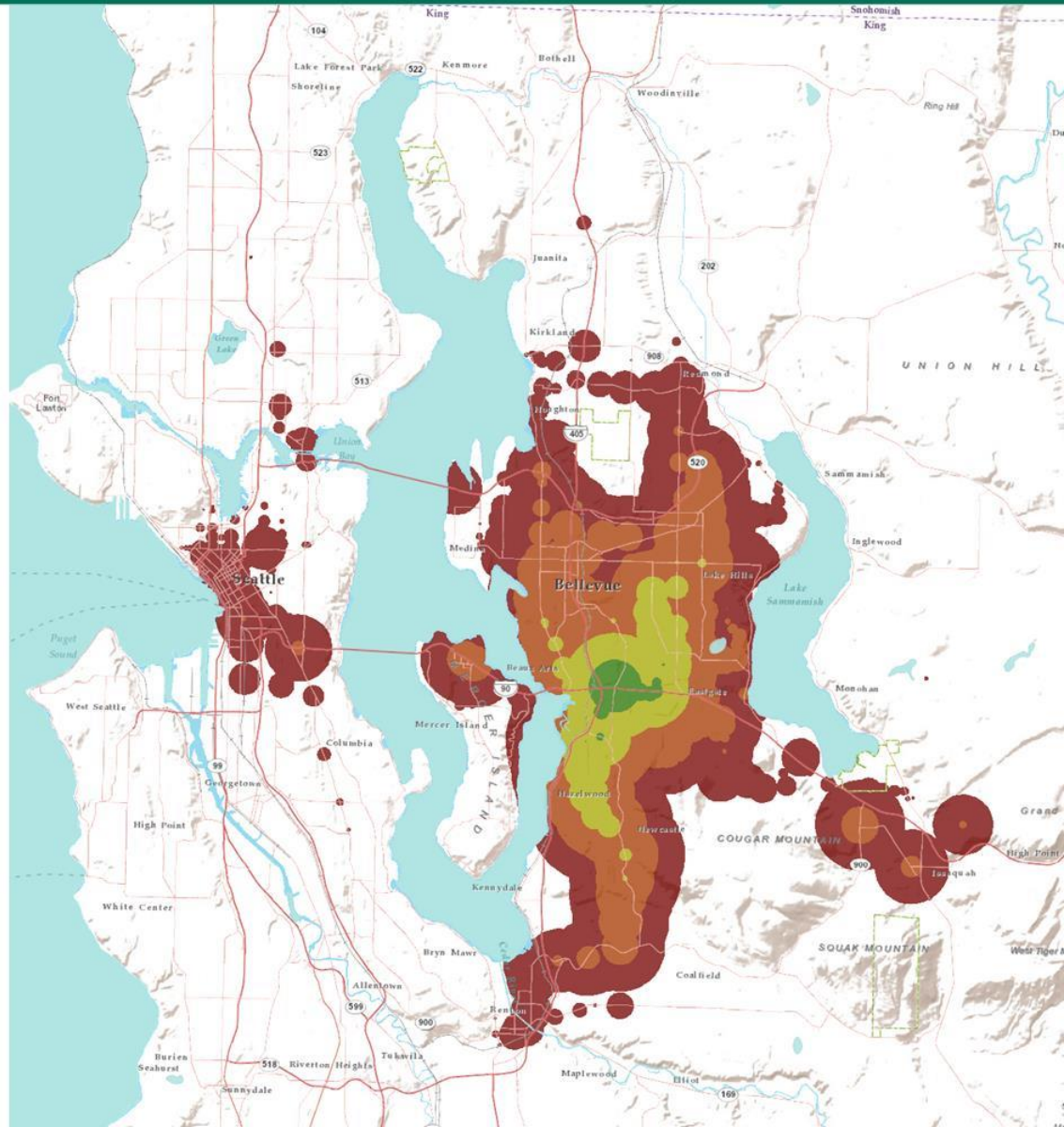
2016

**2025**

2040

- 15 minutes
- 30 minutes
- 45 minutes
- 60 minutes

Travel times include initial wait times and the average time spent waiting to transfer.  
Represents trips starting at noon on weekdays.



# How far you can go

Starting from:

**Factoria**

In the year:

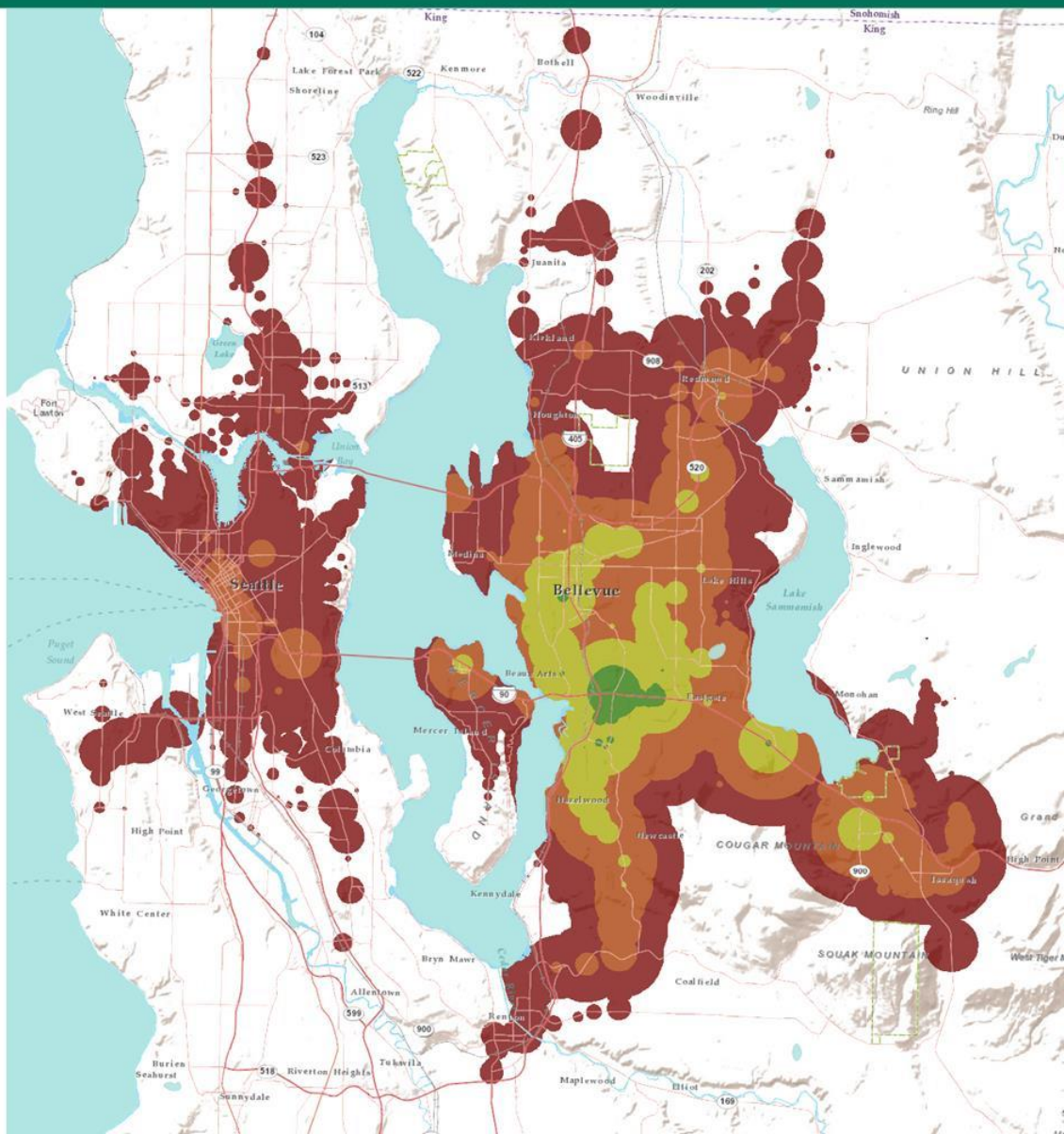
2016

2025

2040

- 15 minutes
- 30 minutes
- 45 minutes
- 60 minutes

Travel times include initial wait times and the average time spent waiting to transfer.  
Represents trips starting at noon on weekdays.



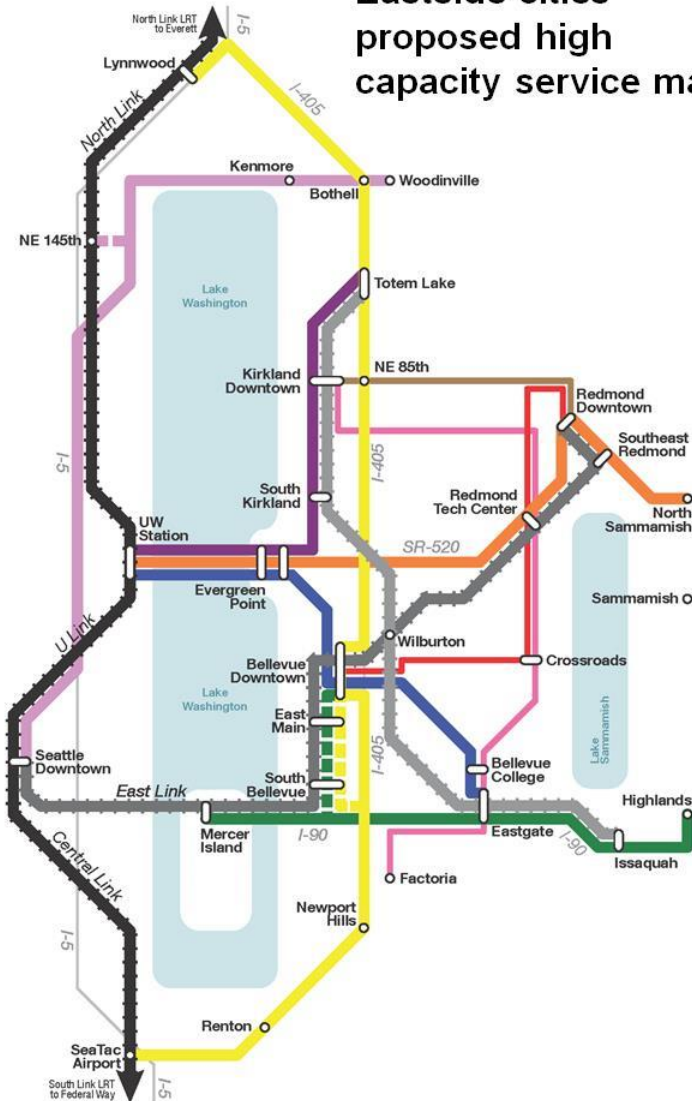
# Bellevue Input TMP

- Abundant Access
  - Convenient
  - Frequent
  - Efficient
  - Simple
  - Direct
  - Regionally Connected

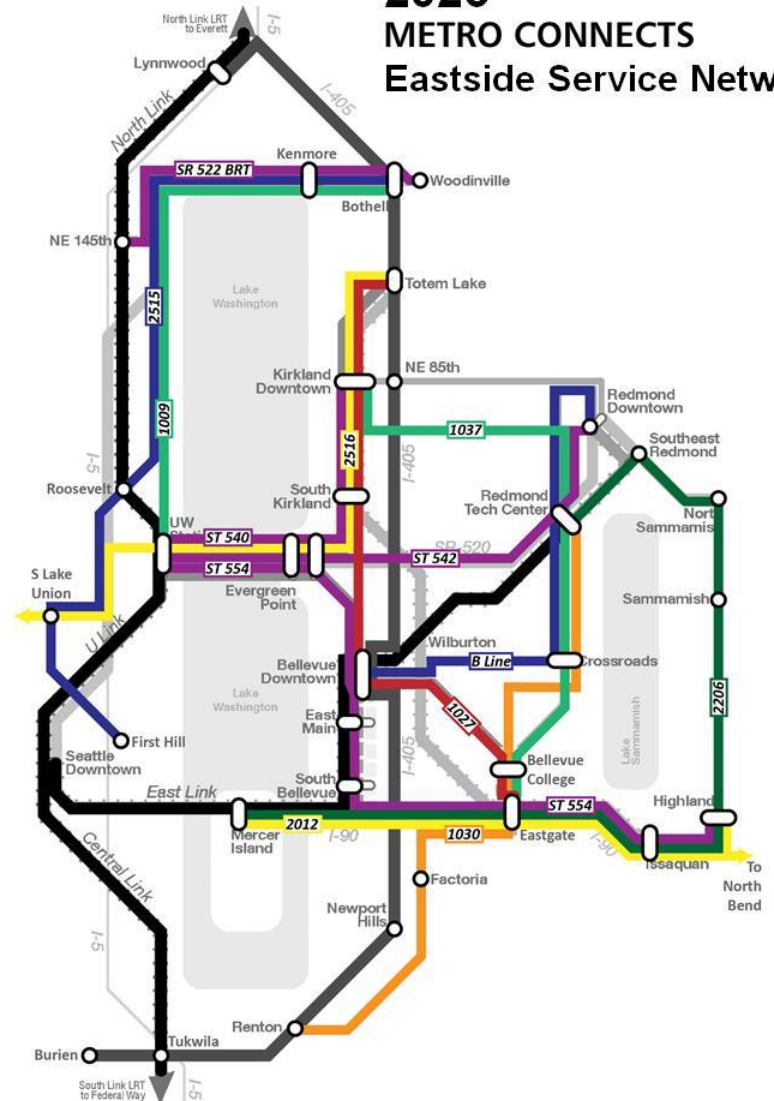


# Bellevue Input ST3 Comments

**Eastside cities  
proposed high  
capacity service map**

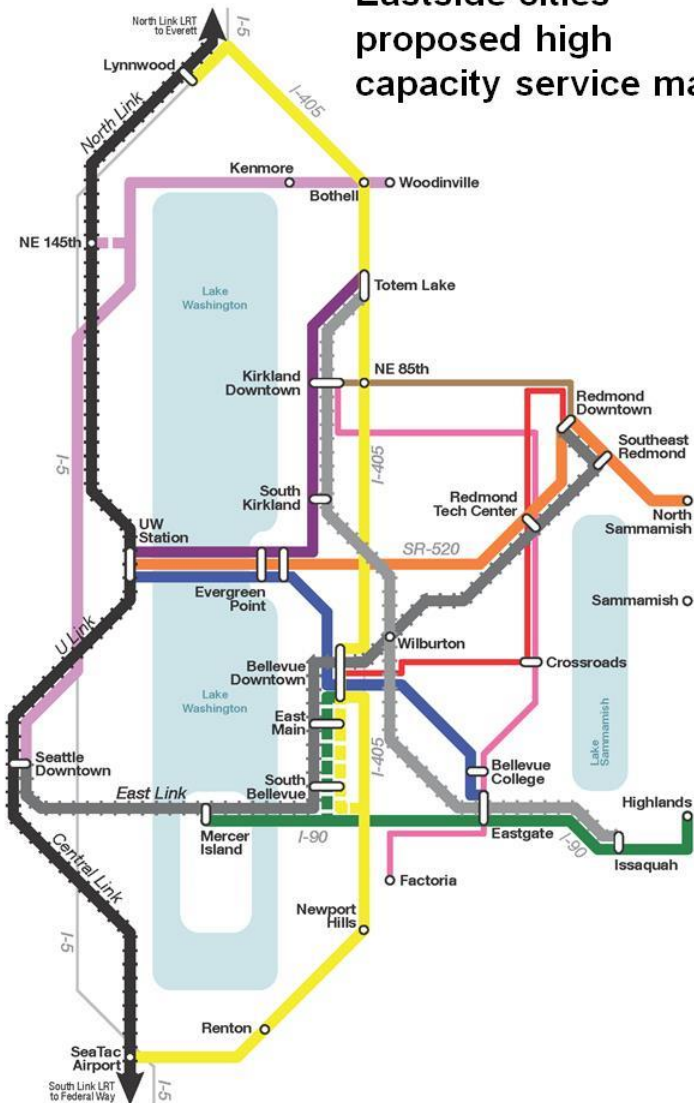


**2025  
METRO CONNECTS  
Eastside Service Network**

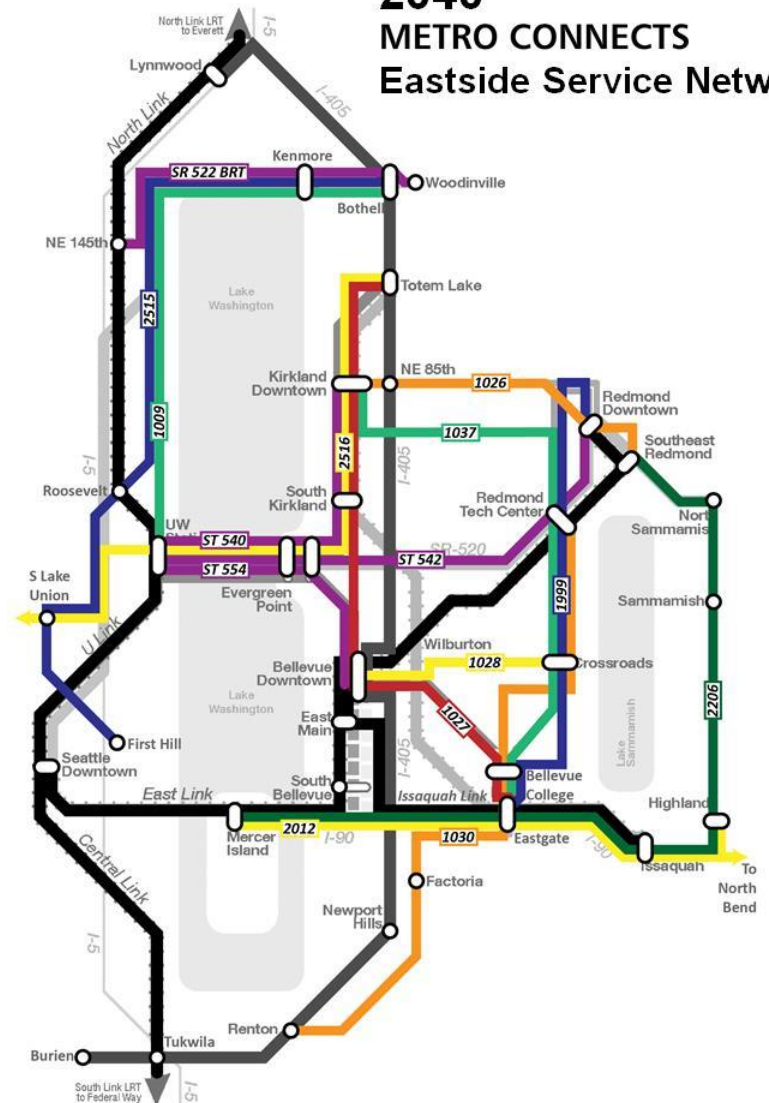


# Bellevue Input ST3 Comments

**Eastside cities  
proposed high  
capacity service map**



**2040  
METRO CONNECTS  
Eastside Service Network**



# Service you can count on

## Investments to help buses run faster and stay on schedule:

- Bus lanes, signal priority, off-board ORCA readers
- 600 miles of roadway investments for all service types
- Significant expansion to Metro's capital program
- Requires strong partnerships with cities



# More Choices to Meet Many Needs



## Expanded Range of Options:

- Provide alternative services where traditional local service does not fit
- Integrate city planning and transit planning
- Develop new products through research and development
- Move toward faster and easier payments with ORCA 2
- Make it easier to move between Metro and other providers

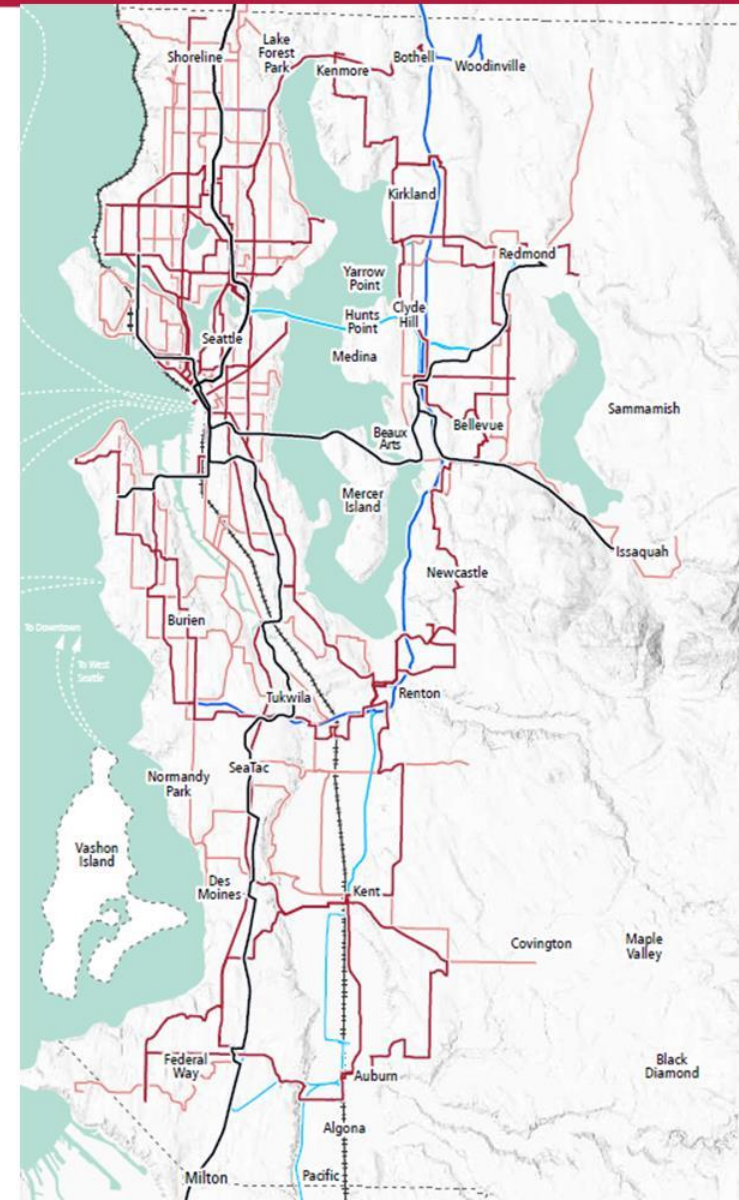
# Easy, Safe, and Comfortable



## **Make it easier to get where you want to go:**

- New and better information for customers and to improve operations
- Improvement to make easy connections to transit
- Safe and well-designed passenger facilities
- Make getting on the bus fast and easy

# TOD and Redevelopment



# Park-and-Rides

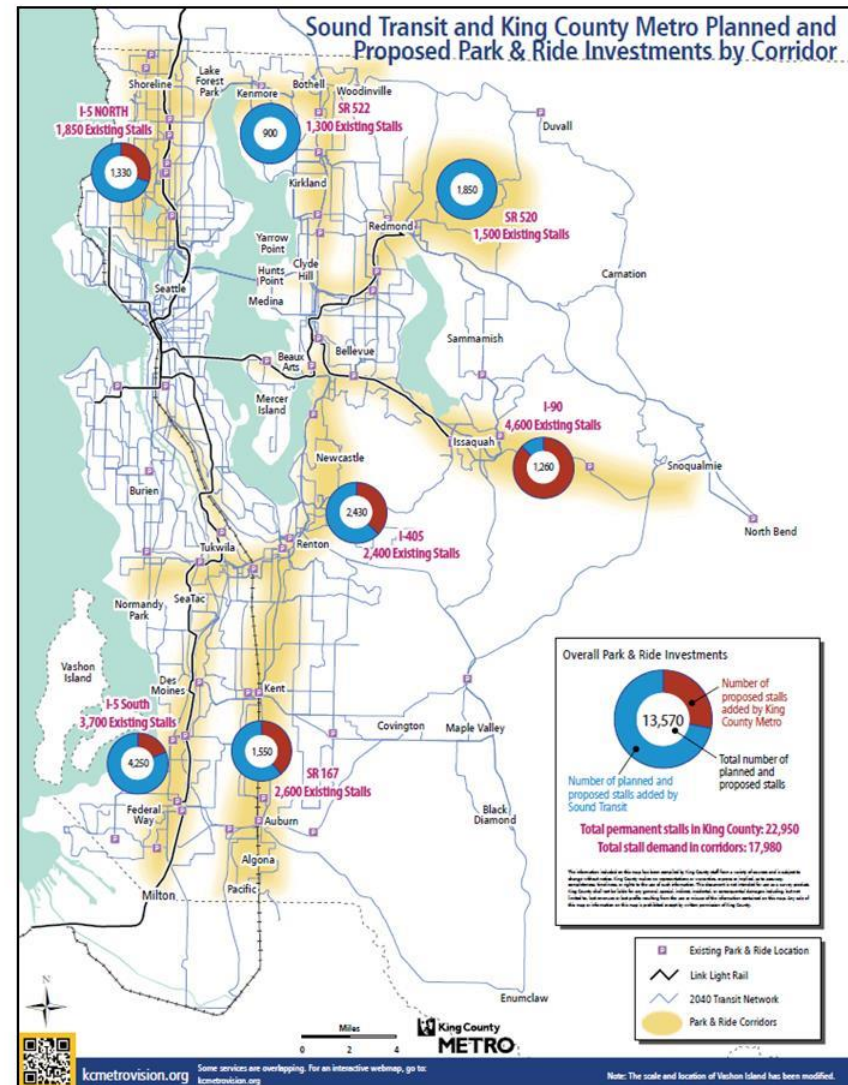
## More spaces

- Over 40% more park-and-ride stalls in 2040\*
- Investment focused in areas of low development & transit density
- Opportunities for more leased lots, shared parking, on-street options

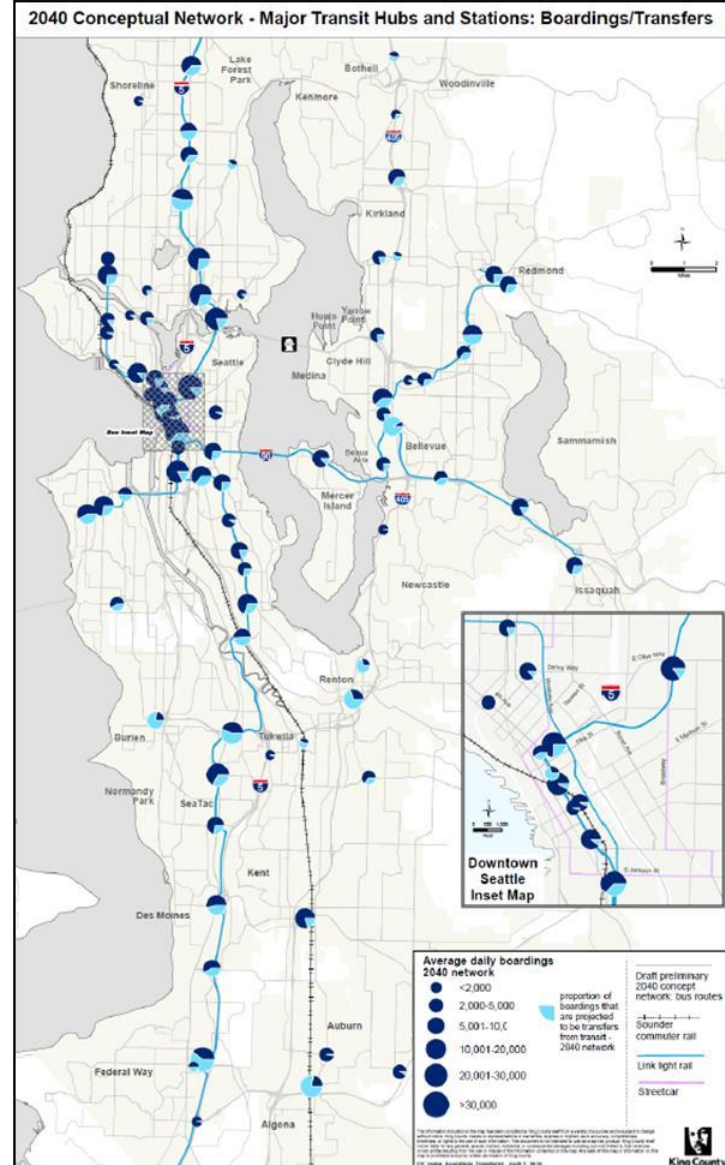
## Increased efficiency

- Increase utilization through more rideshare, restriping
- Technology improvements like real-time parking info & communication
- Use paid parking to better manage capacity

\* Includes proposed Sound Transit investments



# Community Investments



# The Nuts and Bolts



- **Our people:** substantially grow our workforce to support the expansion of service
- **A fleet for the future:** buy more than 500 new buses and vans to support the higher levels of service
- **Trolley network:** Grow our trolley network by expanding and infilling overhead wires
- **Layover areas:** Increase bus layover space by 50% from today
- **Bus bases and support facilities:** Add two to three new bus bases and invest additional support services and facilities.

# Implementing the Vision

Transit system will require substantial capital and service investments

- Strengthen partnerships with cities, stakeholders and other transportation providers
- Work with cities to ensure improvements are a good fit for each community
- Long-range plan to support local planning and identify complementary transit service



# Learn More and Give us Feedback



Visit [kcmetrovision.org](http://kcmetrovision.org)



Sign up for updates



Send us your comments



Attend an event



Attend a Community Advisory Committee meeting



Join the conversation on social media  
#kcmetrovision



Take our online survey

**May 20** – Public comment ends on the draft METRO CONNECTS plan

## **Upcoming Evening Joint Sound Transit & King County Metro open houses:**

- April 26 – West Seattle High School
- April 27 – Old Redmond Schoolhouse
- April 28 – Union Station (Daytime)
- April 28 – Todd Beamer High School (Federal Way)

## **Upcoming King County Metro open house in Bellevue:**

- May 11 – Bellevue City Hall Concourse from 5:30pm to 7:30pm

The background of the slide features a photograph of a transit station. On the left, a white bus stop shelter with a red roof is visible, with two vertical signs that read "RAPIDRIDE". A yellow bus is stopped at the shelter. The bus has "RAPIDRIDE" and "METRO" branding, along with a slogan "Anytime is GO time." and the "King County METRO" logo. A red banner with a white circle is positioned at the top left of the slide.

## Questions?

### Contact us:

Stephen Hunt

Transportation Planner

[Stephen.Hunt@KingCounty.gov](mailto:Stephen.Hunt@KingCounty.gov)

206-477-5828

Tristan Cook

Community Relations Planner

[Tristan.Cook@KingCounty.gov](mailto:Tristan.Cook@KingCounty.gov)

206-477-3842