



***Bellevue Parks &
Community Services***

Parks & Open Space System Plan Update

City Council Study Session

February 8, 2016

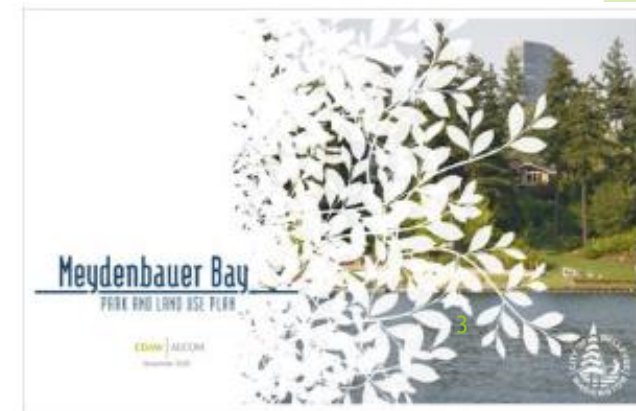
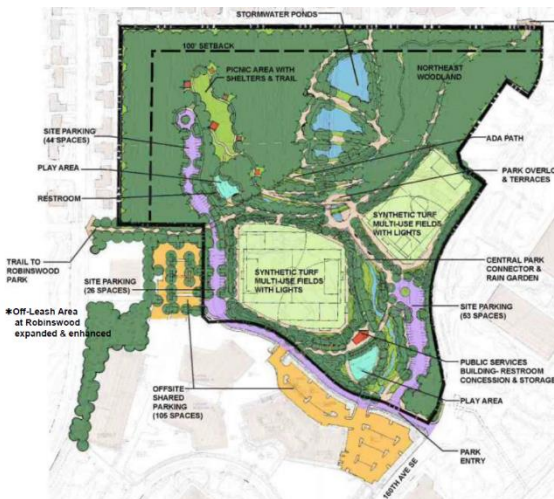
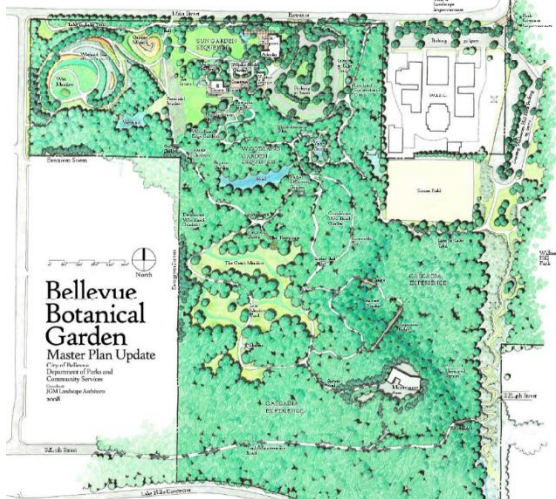
Context for Park System Planning

- Council on Accreditation of Park and Recreation Agencies (CAPRA) standards
- Washington Recreation and Conservation Office (RCO) system planning requirement
- Washington State Growth Management Act (GMA)





Context for Park System Planning



Contents of the Plan

- Community Profile
- Natural Resource Characteristics
- Park & Open Space Inventory
- System Plan Goals
- Capital Project Objectives
- Maintenance, Renovation and Security
- Funding Strategy & Sources





System Plan Focus Areas

- Open Space, Greenways, Wildlife Corridors and Trails
- Park Facilities
- Active Recreation Facilities
- Urban Parks Systems
- Waterfront Access
- Partnership Opportunities
- Historic, Cultural and Art Resources

Related Plans and Initiatives

- Bellevue Comprehensive Plan
- City Council Vision
- Recreation Program Plan
- Human Services Needs Update
- Bellevue Diversity Advantage
- Downtown Livability Initiative
- Eastside Rail Corridor Master Plan
- Ped. and Bicycle Implementation Initiative
- Shoreline Master Program



Parks & Community Services Board Oversight

- Balanced consideration of:
 - Public engagement activities and public hearing
 - Comprehensive Plan Update
 - Other recent City plans and projects
 - Park Board retreat results
 - Input from other city commissions
- Unanimous recommendation for council approval

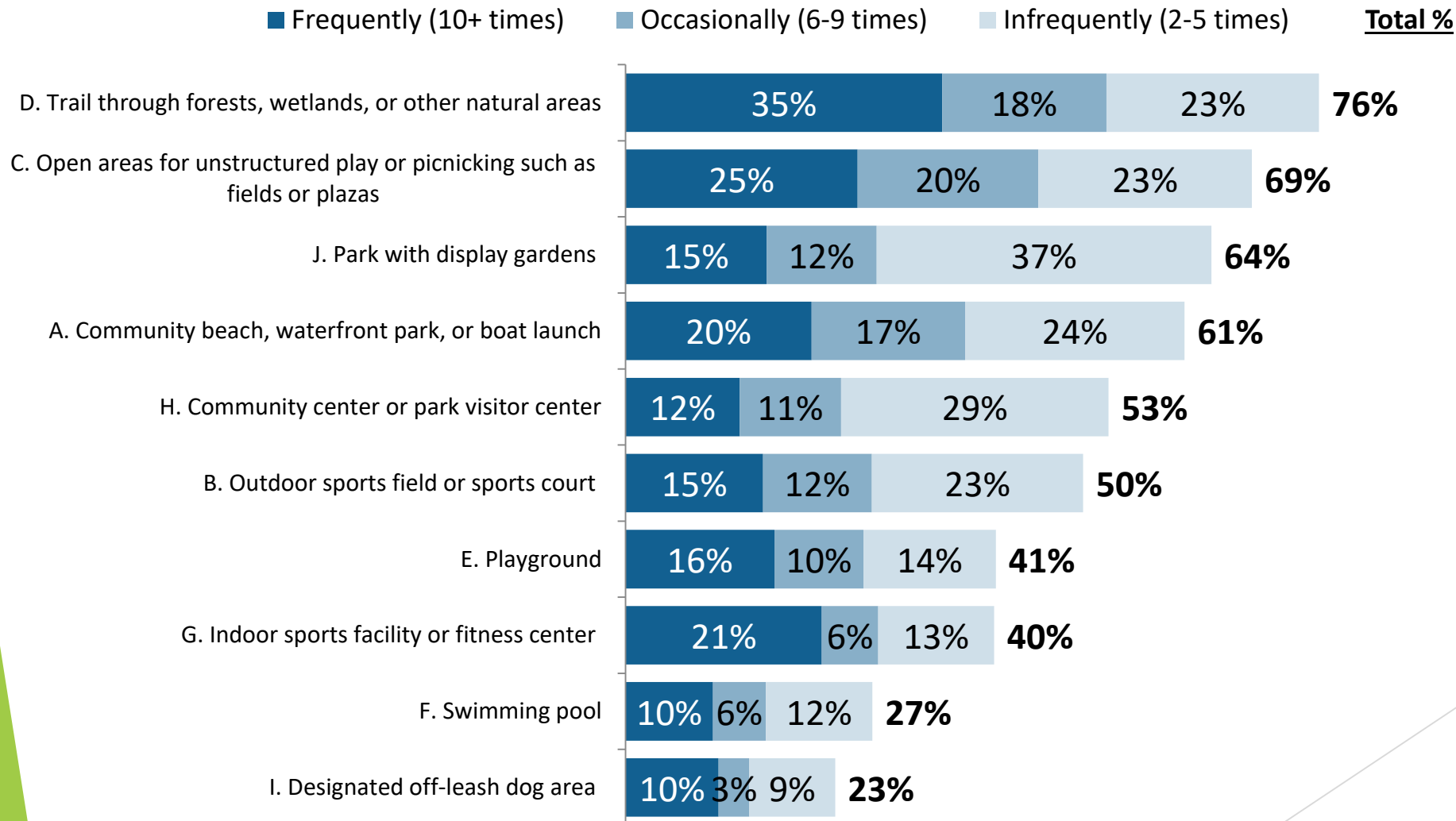




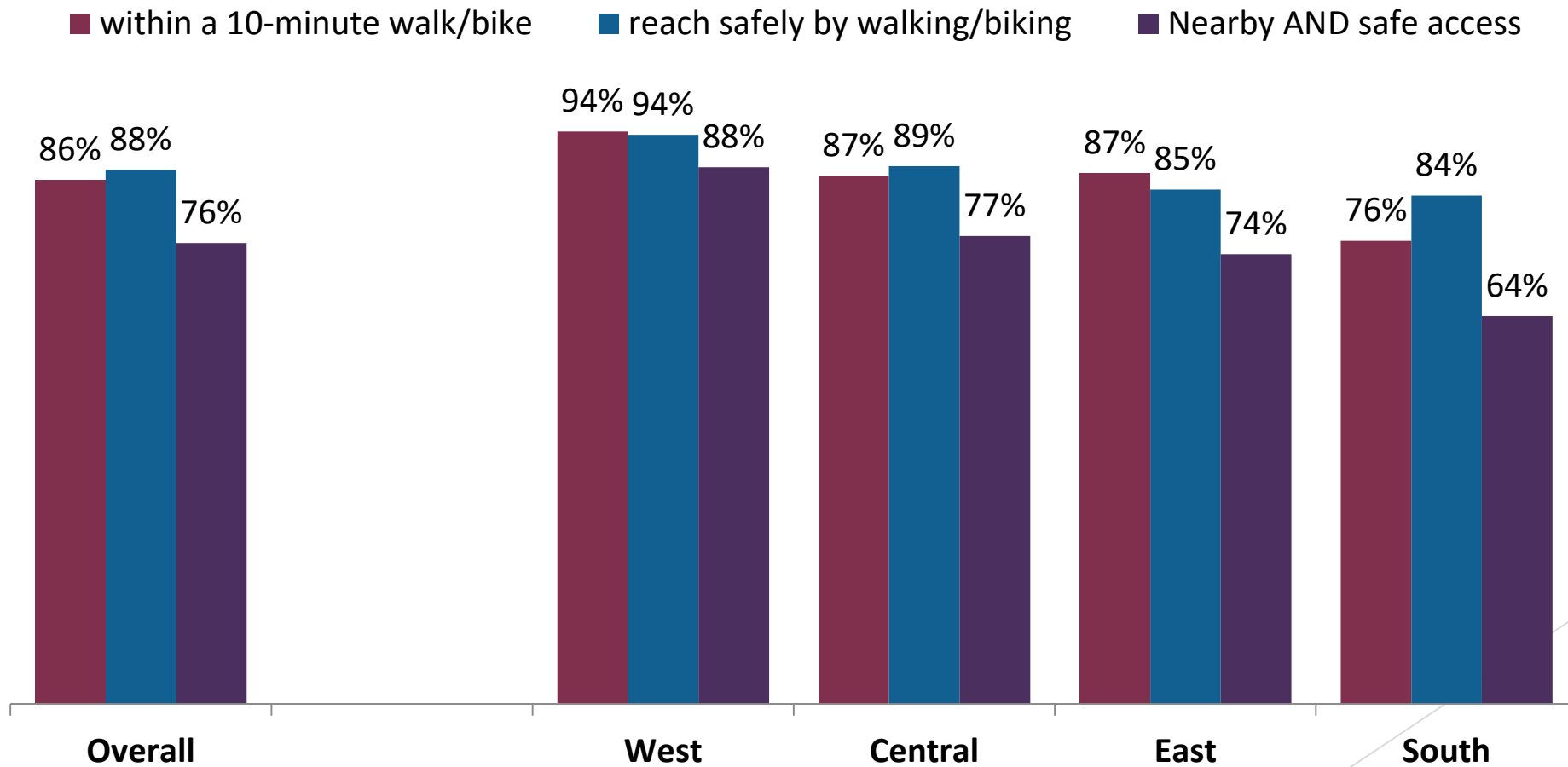
Outreach Methods

- Statistically Valid Resident Surveys
- Open Web Survey
- Public Hearing / Public Meetings
- NextDoor Neighborhood Email Distribution Groups
- Presentations
- Newsletters, Social Media, Web Pages, Newspapers, Flyers
- Photography and Poetry Contest

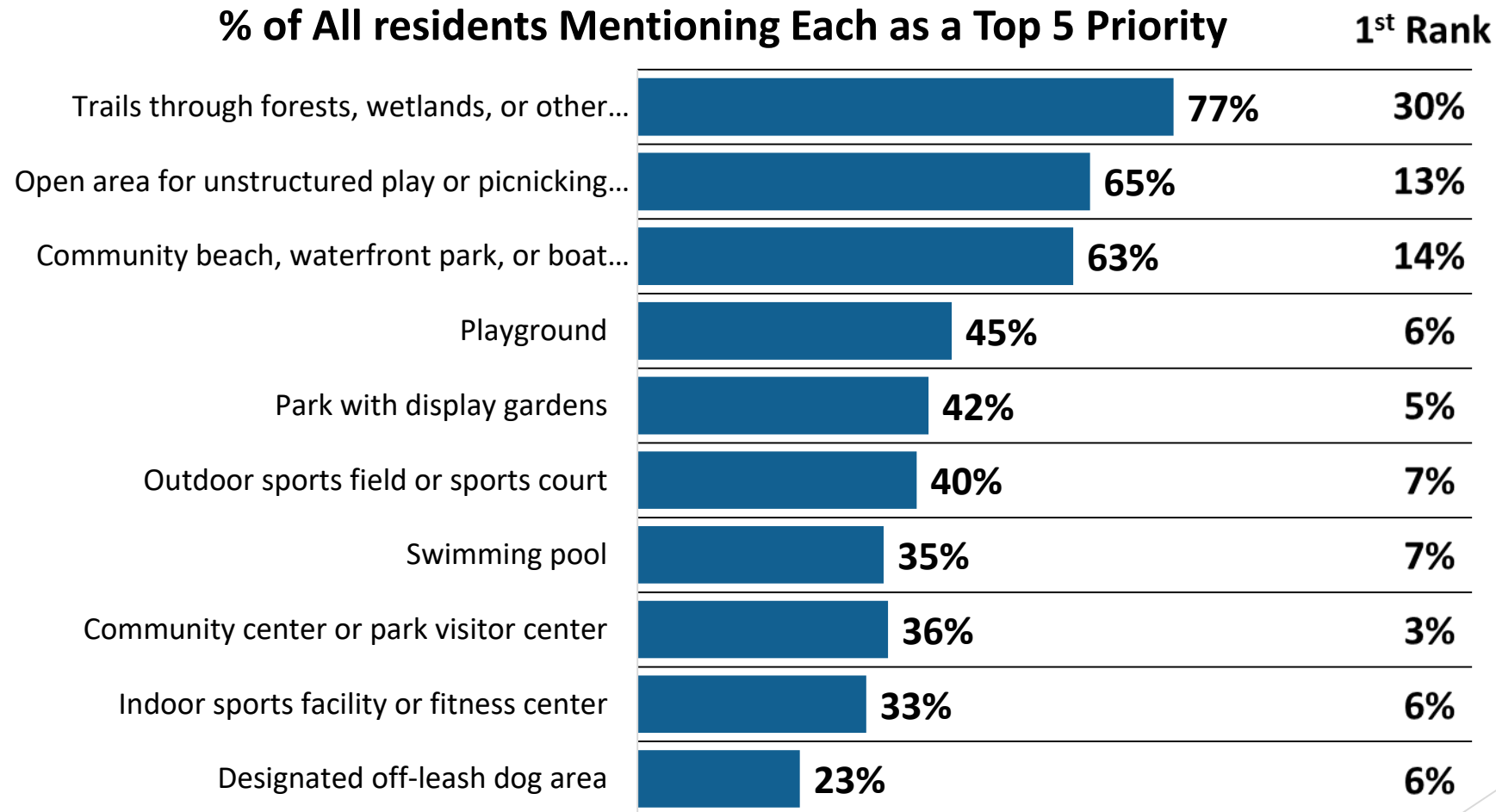
In the past 12 months, how often have you personally visited any of the following types of public or private parks or recreation facilities in Bellevue?



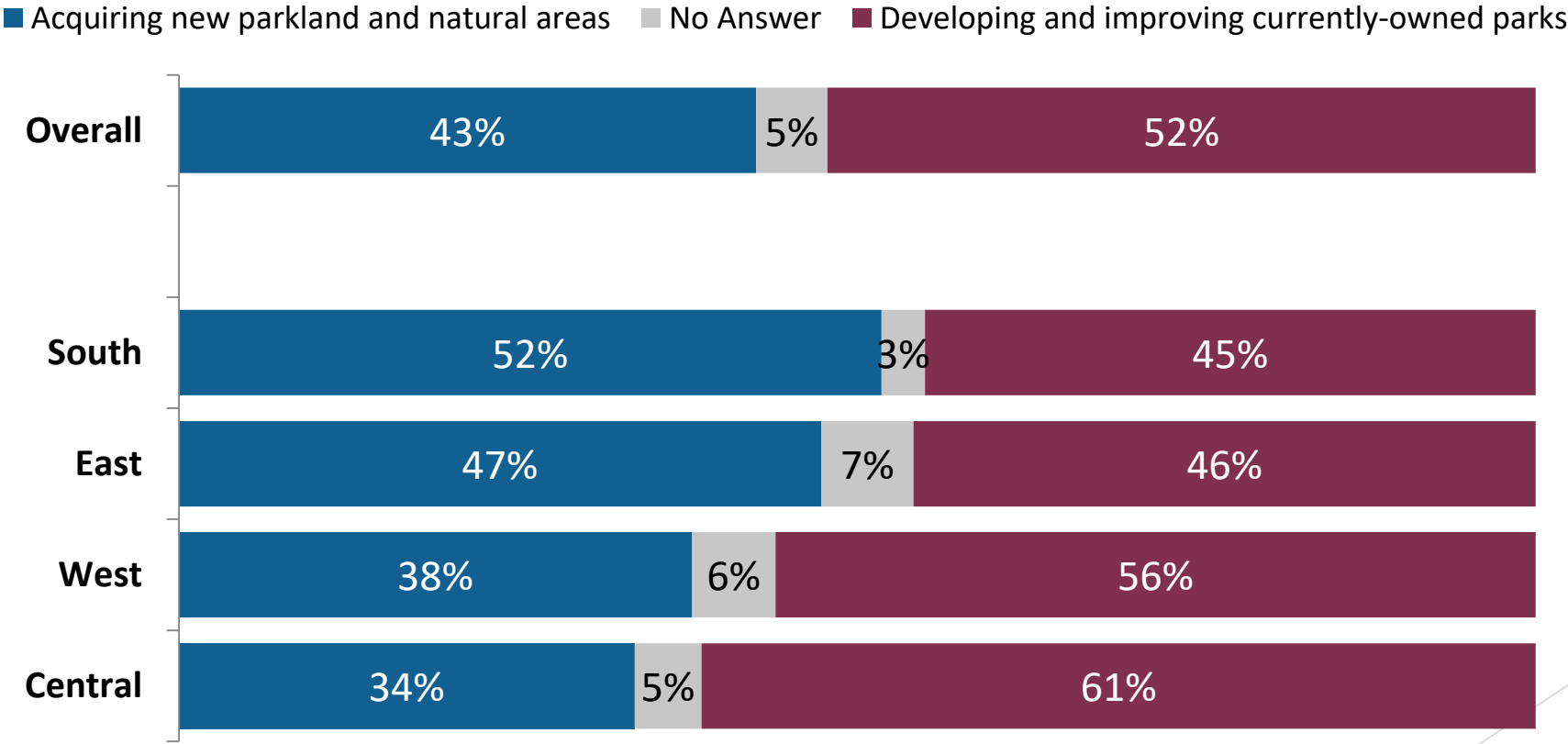
Is there a Bellevue Parks & Community Services park, trail entrance or facility within a 10-minute (or 1/3 mile) walk of your home? Are you able to reach this facility safely by walking or biking?



Please rank the five items you think should have the highest priority for city development of parks and recreational facilities.



Should City investments be focused more on the acquiring new parkland and natural areas or focused more on developing and improving currently-owned parks?



Web Survey Results - Is there any type of park or recreational facility you would like to see more of?



Highlights of Projects Completed

- Major renovation of Coal Creek Natural Area
- Acquired 10 acres in Newport Hills
- Opened Bridle Trails Corner Park
- Acquired NE 2nd Properties in Downtown
- Opened Bellevue Youth Theatre
- Bellevue Botanical Garden improvements
- Sportsfield improvements at Newport Hills, Bannerwood and Hidden Valley
- Meydenbauer Bay Park site preparation



Highlights of what is new in 2016 Edition

Chapter	Action
Policy Framework	<ul style="list-style-type: none">• Aligning Goals from Comprehensive Plan
Planning for the Future	<ul style="list-style-type: none">• Updating survey data• Needs by Neighborhood Area
Capital Project Objectives	<ul style="list-style-type: none">• Park Board Recommendations
Maintenance, Renovation & Security	<ul style="list-style-type: none">• More detail on Renovation Plan, security and emergency response
Financing Capital Projects	<ul style="list-style-type: none">• Future park bond/levy package• Increased reliance on grants, partnerships, dev. incentives

Highlights of what is new in 2016 Edition

Capital Project Objectives incorporated from other existing planning initiatives

Capital Project Objective	Rationale
Downtown Urban Trail System	<i>Downtown Livability:</i> Supports using existing and new through-block connections as urban trails for pedestrians.
Grand Connection from Meydenbauer Bay to Eastside Rail Corridor	<i>Grand Connection / Wilburton:</i> Supports the parks and recreation elements of the Grand Connection
Eastgate I-90 Corridor park, open space and trail development projects	<i>Eastgate I-90 Land Use Plan:</i> Incorporates the park, trail and open space objectives of the Council-adopted plan



Highlights of what is new in 2016 Edition

New objectives proposed based on public feedback and city studies

Objective Name	Rationale
Add a neighborhood-scale park in the Eastgate Area	The recently annexed portions of Eastgate do not have walkable access to parks and trails.
Add a neighborhood-scale park in the Wilburton Area	Increased residential density at the north edge of this neighborhood is outside of walkable access to parks and trails.
Improve undeveloped parks site in the Bridle Trails Area	This objective relates to property acquired in 2015 on 140 th Avenue NE



Highlights of what is new in 2016 Edition

New objectives proposed based on public feedback and city studies

Objective Name	Rationale
Improve undeveloped park site in Newport Hills	This objective relates to properties acquired on SE 60 th St
Add shelters and facilities for large group picnic areas	Parks & Community Services Board added this based on community feedback
Sweyolocken Boat Launch Redevelopment	Redeveloped to better support non-motorized watercraft



Highlights of what is new in 2016 Edition

2010 Objectives revised and updated for 2016

Objective Name	Rationale
Trail Connections/Extensions: Enhance connectivity and walkability by creating connections between neighborhoods and local parks	The Board re-directed this objective to focus on neighborhood-based trail connections based on public feedback collected.
Off-leash dog areas, expand Robinswood and add addition sites across the city	The Board added in response to public feedback requesting additional facilities.
Facilities Providing Recreation and Interaction for Diverse Cultures, Ages and Abilities	This objectives was broadened by the Board to be responsive to the City's Diversity Advantage plan
Public golf-related facility improvements	This objective was re-worded by the Board to encompass variants such as Frisbee golf, foot golf, and mini-golf.



Next Steps

- SEPA Review
- Council Adopting Resolution
- Layout and Graphics
- Submittal to State Recreation & Conservation Office

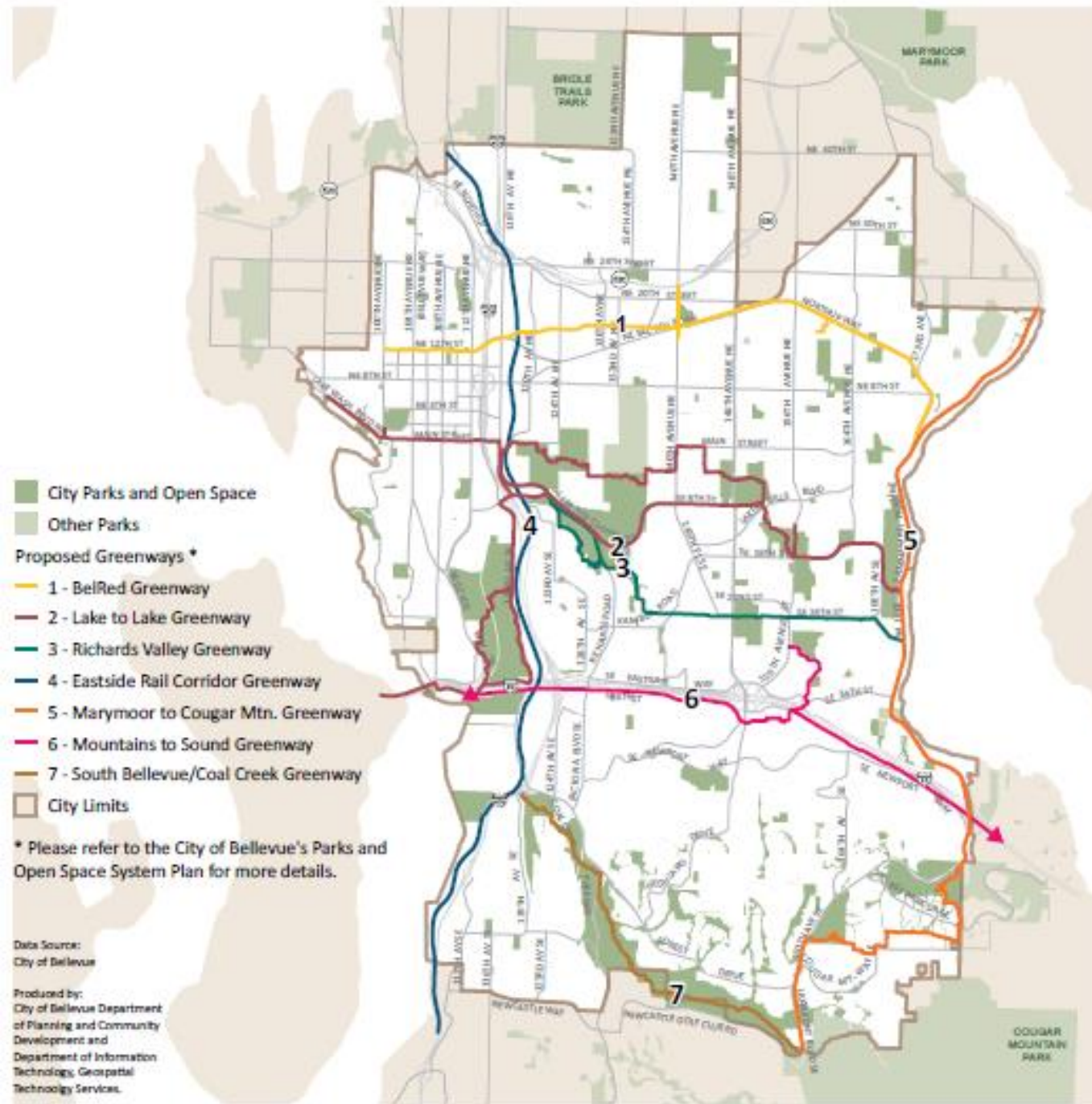


Reference Slides



**Bellevue Parks &
Community Services**

Greenways



Bellevue Parks & Community Services

Park Facilities

Opportunity:

Add neighborhood parks in underserved subareas:

[Bridle Trails](#)

[BelRed \(see Urban Park Systems\)](#)

Crossroads

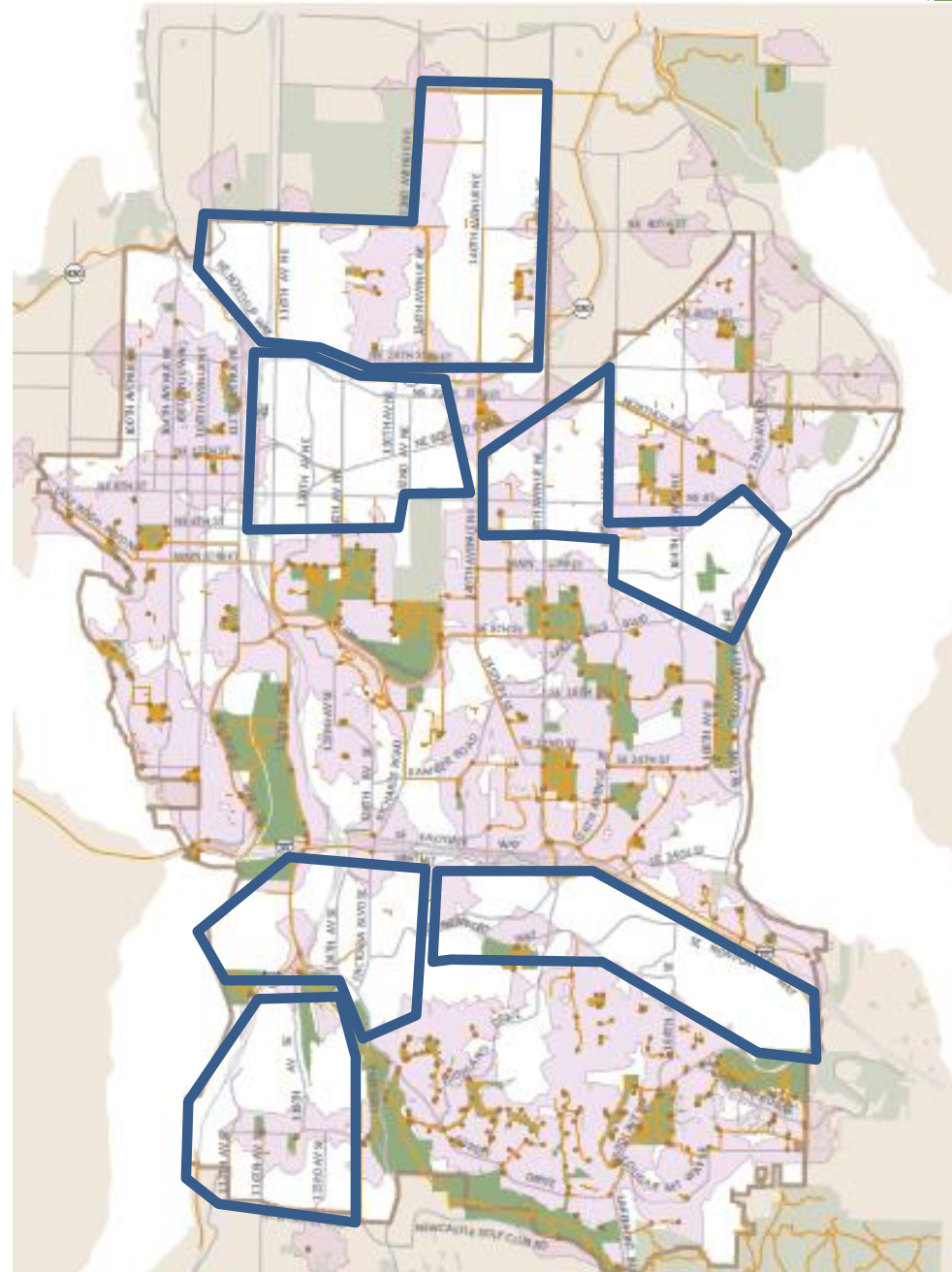
[Downtown \(see Urban Park Systems\)](#)

[Eastgate](#)

Factoria

Newport Hills

[Wilburton](#)



**Bellevue Parks &
Community Services**

Urban Park Systems

Downtown

NW & SE quadrant neighborhood parks

Downtown Park

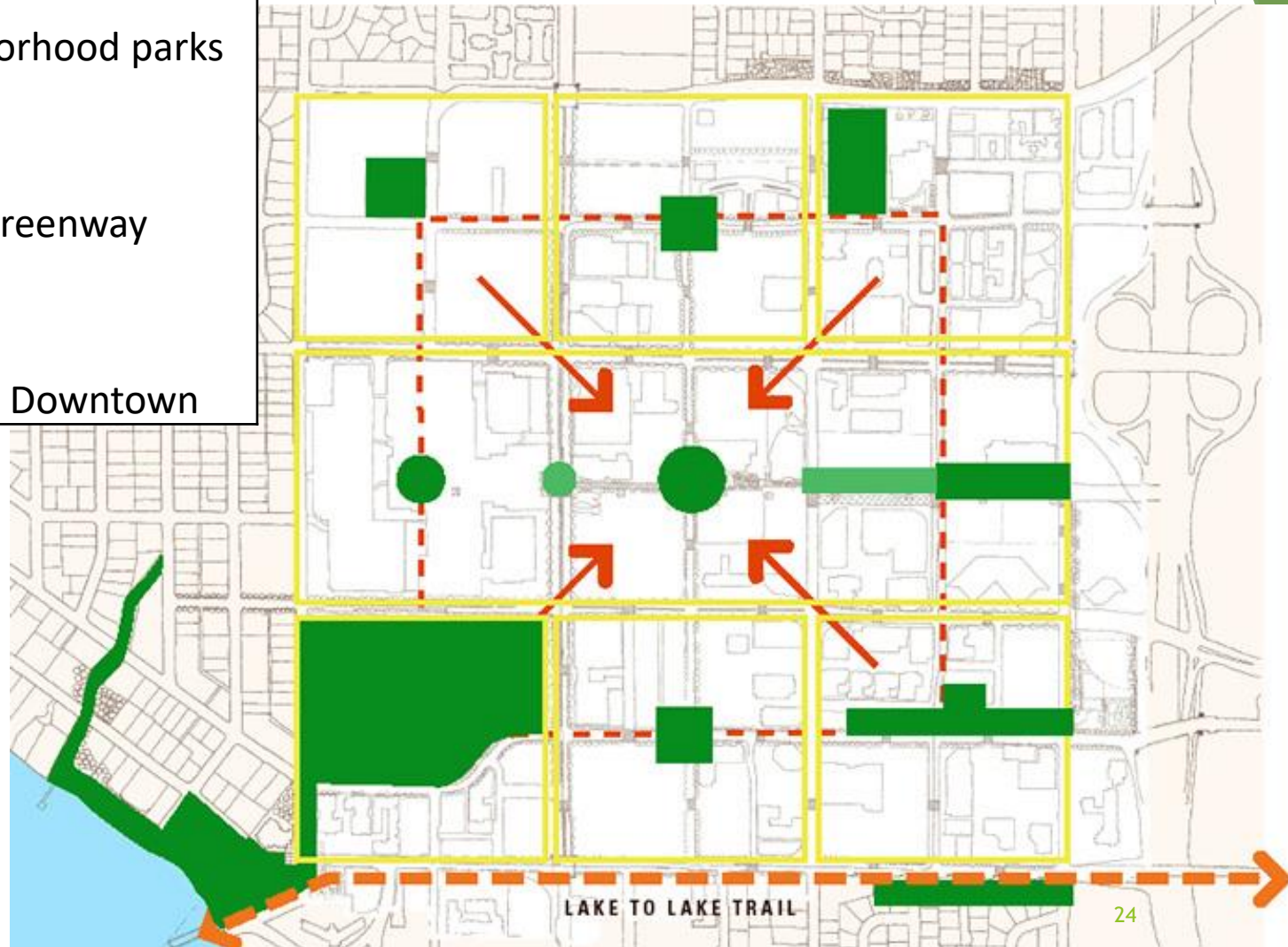
Ashwood Park

Main Street linear buffer greenway

Urban Trail System

Grand Connection

Community center serving Downtown



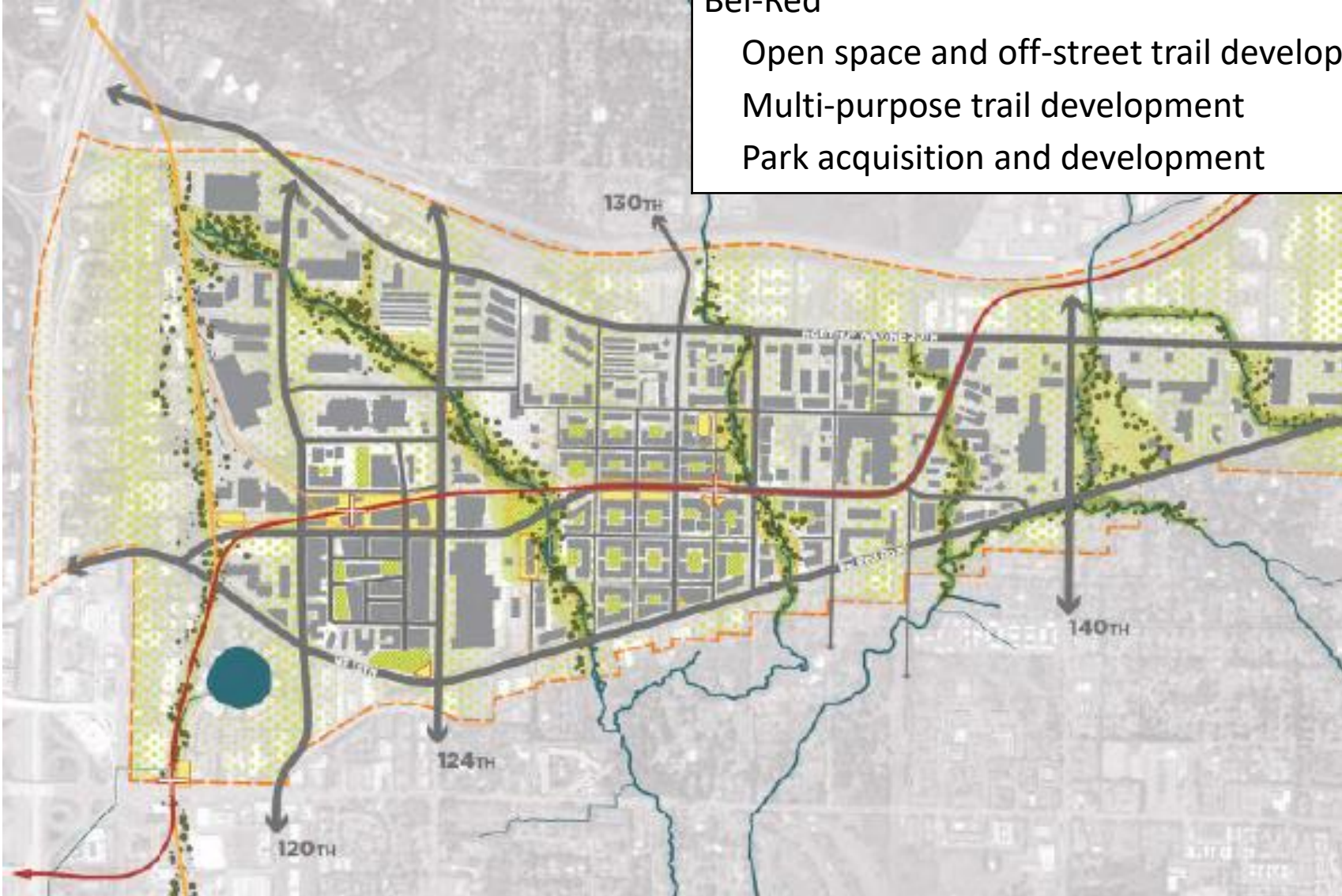
Urban Park Systems

Bel-Red

Open space and off-street trail development

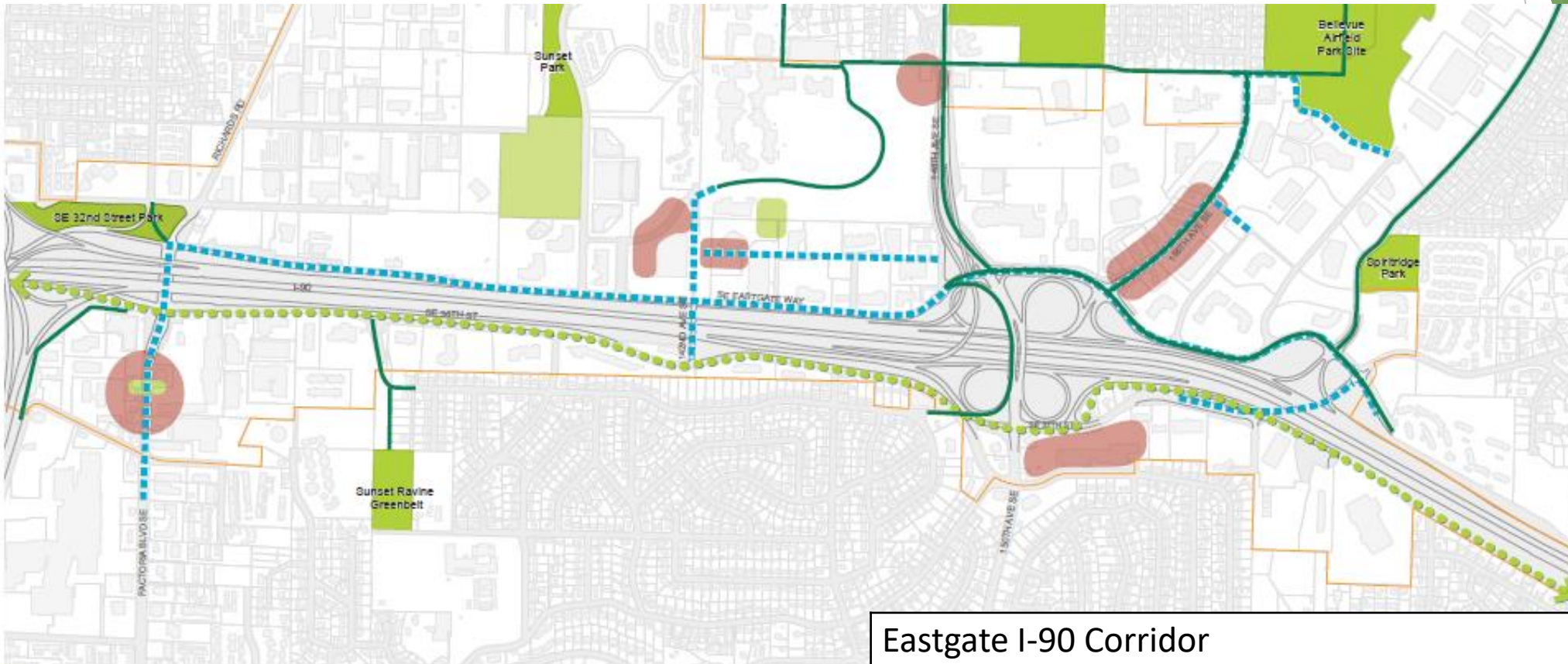
Multi-purpose trail development

Park acquisition and development



**Bellevue Parks &
Community Services**

Urban Park Systems



Eastgate I-90 Corridor

Open space and off-street trail development

Multi-purpose trail development

Park acquisition and development