



Proposed Amendments to Bellevue City Code 11.23 Parking

Tonight's Discussion

- Update Parking Fine Amounts
- Reconfigure Parking Code
- Establish new Parking Rules
- Direction for March 7th Council



Parking Restricted—\$29

Safety and Commerce

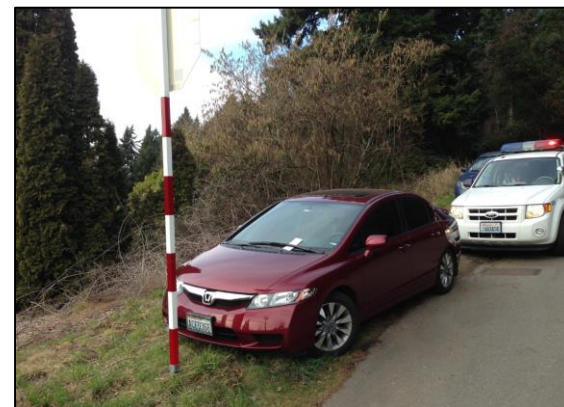
- Approximate parking tickets in Downtown:
 - 3250/year
 - 2500 Safety related
 - 750 Overtime



Parking Enforcement enhances **SAFETY** and **COMMERCE** ₃

Inconsistent Parking Penalties

- Fines Range from \$23 to \$40 Even Though Based on Same BCC or RCW
- District Court Requests Consistent Fines
 - Hand Modify Infractions < \$40
 - Time Consuming, Increases Cost and Errors
 - Legal Supports BDC Request
- Variable Citation Amount for Safety Violations



**Too Close to Stop Sign
RCW 46.61.570—\$40**



**Parking Restricted
RCW 46.61.570—\$29**

Consistent Parking Penalties

- Recommendation--\$40 Fine for All Infractions
- Implement May 1, 2016
- Public Info March 2016

PARKING INFRACTIONS COMPARABLES									
TYPE OF INFRACTION	BELLEVUE REGULATION	COB CURRENT FINE	COB PROPOSED FINE	SEATTLE	REDMOND	TACOMA	KING COUNTY	KENT	
SAFETY									
Parking Restricted-Safety Related	RCW 46.61.570	\$40	\$40	\$47	\$29	\$35	\$50	\$50	
Parking Restricted NPAT	RCW 46.61.570	\$29	\$40	\$47	\$29	\$35	\$50	\$50	
Parking Restricted Specific Streets	BCC 11.23.010	\$29	\$40	\$53	-	-	-	\$50	
Parked Traveled portion of Roadway	BCC 11.23.025	\$29	\$40	\$47	\$30	\$35	\$50	\$50	
TIME RESTRICTED									
Overtime Parking	BCC 11.23.022	\$23	\$40	\$44	\$29	\$25	\$50	\$30	
RPZ									
Violation of a RPZ	BCC 11.23.010	\$40	\$40	\$29	-	\$25	\$50	\$50	
Illegal Sale of RPZ Permit	Proposed	-	\$250	\$250	-	-	-	-	
OTHER									
For Hire Vehicle Stopping, Standing, Parking	BCC 11.23.026	\$29	\$40	\$47	-	\$25	\$19	-	
Parking Restricted--Mailbox	Proposed	-	\$40	-	-	-	\$50	\$50	
Parked with Expired Tabs	Proposed	-	\$40	\$47	-	\$86	-	\$50	
Parked Over 24 Hours	BCC 11.23.020	\$29	\$40	\$44	\$45	-	\$50	-	
Bus stops(existing WAC)	WAC 302-330-457	-	\$40	\$47	\$45	\$25	\$70	-	
Vehicle for Sale/Repairing (existing WAC)	WAC 309-330-436	-	\$40	\$47	\$45		\$86	\$50	

Penalty Automatic Adjustment

- BCC Requires Penalty Adjustment

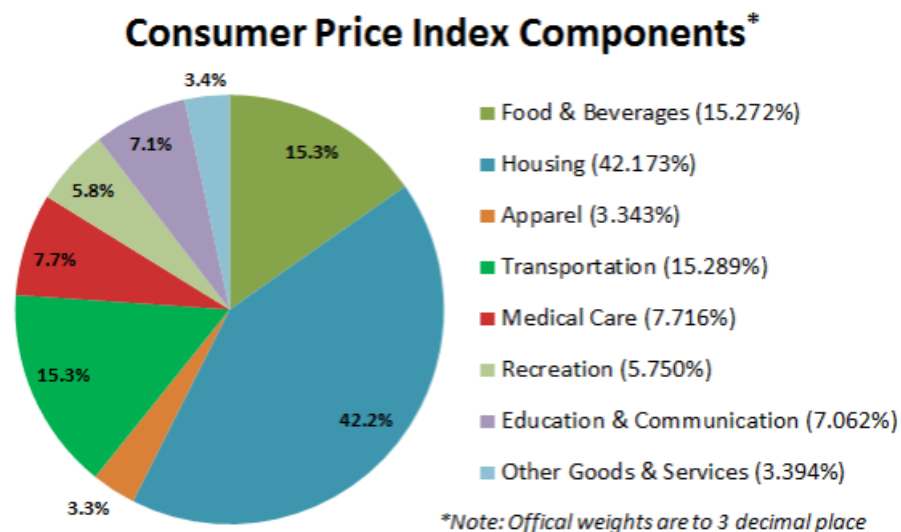
- Biennially (Even Years) on January 1st

- Based on CPI

- Last Accomplished 2008

- Going forward:

- New Penalties May 1st, 2016
 - Next Adjustment Jan 1st, 2018
 - Every even year thereafter



Penalty Table Outside of Code

- Penalties Currently Embedded in Code
- Not Consistent with Automatic Adjustments
- Recommendation:
 - Have BCC Refer to Penalty Table
 - Remove Infractions/Penalties from Code Itself

C. The amount of the penalty for all parking infractions shall be \$25.00; except, that the penalty for the following specified infractions shall be in the amount indicated:

Violation of a RPZ Restriction (BCC [11.23.010](#)): \$35.00;

Parking Too Close to Fire Hydrant (RCW [46.61.570](#)): \$35.00;

Parking on Sidewalk (RCW [46.61.570](#)): \$35.00;

Parking Too Close to Intersection (RCW [46.61.570](#)): \$35.00;

Parking Too Close to Crosswalk (RCW [46.61.570](#)): \$35.00;

Parking on Bridge or in Tunnel (RCW [46.61.570](#)): \$35.00;

Penalty Adjustment Suspension

- Authorize City Manager
- Currently Not Allowed by Code
- Occurred in 2010



Expired or Improperly Displayed Tabs

- Vehicle with Expired Tabs of >45 Days Can be Impounded
 - RCW 46.55.113
- No Option to Give Infraction Instead
- Used by Seattle, Tacoma, Kent
- Police Recommendation



Parking Blocking Mailbox Access

- Resident Concerns
- Difficulty for Postal Service
- Disruption of Mail Delivery
- Proposed Code:
 - Within 10 Feet
 - From 8 AM to 6 PM on Mail Days
- Used by King Co, Woodinville, Kent, Auburn, Lake Stevens
- Recommended by USPS, Police, Transportation



Infractions Without Established Penalties

- WAC 308-330-457
 - Parking at Bus Stops
- WAC 308-330-436
 - Vehicles for Sale
 - Repairing Vehicles
- Currently Enforced with \$29 Infraction (Parking Restricted)
- Fines Established in Seattle, Redmond, King County and Kent
- Recommended Establish Fine Amount in BCC of \$40
 - Police and Transportation



RPZ Permit Misuse

- Yearly Occurrence
- Sell or Give RPZ Permits
- Counterfeit Permits
- \$250 Penalty
 - Illegal Production, Sale, Purchase or Possession
 - Seattle Uses this Code
 - Use with Discretion



Summary – Direction Sought

- Establish \$40 penalty for all infractions
- Implement new parking penalty May 1, 2016
- Remove penalty amounts from BCC to standalone table
- Authorize City Manager to suspend automatic penalty adjustment as warranted
- Optional ticket for expired tabs (instead of towing)
- Restrict parking at mailboxes
- Establish RPZ permit misuse fine of \$250
- Establish penalties for bus stops, for sale & repairing vehicles

Tonight's Discussion

- Questions
- Seeking Direction for March 7th



Basics

- Approximate annual parking tickets:
 - 4000/yr
 - 3250 in Downtown
 - 750 elsewhere
- Gross Revenue Estimate
 - \$130,000
- Additional Revenue Estimate
 - \$35,000



PARKING INFRACTION – CHEAT SHEET (03/29/2013)

Parking Restricted--NPAT, etc. (RCW 46.61.570): \$29.00

Violation of a RPZ Restriction (BCC 11.23.010): \$40.00

Parking Restricted Specific Streets (BCC 11.23.010): \$29

Parking Too Close to Fire Hydrant (RCW 46.61.570): \$40.00

Parking on Sidewalk (RCW 46.61.570): \$40.00

Parking Too Close to Intersection (RCW 46.61.570): \$40.00

Parking Too Close to Crosswalk (RCW 46.61.570): \$40.00

Parking on Bridge or in Tunnel (RCW 46.61.570): \$40.00

Parking Too Close to Railroad Crossing (RCW 46.61.570): \$40.00

Parking Too Close to Driveway (RCW 46.61.570): \$40.00

Parking Too Close to Stop or Yield Sign (RCW 46.61.570): \$40.00

Parking Too Close to Traffic Control Signal (RCW 46.61.570): \$40.00

Overtime Parking (BCC 11.23.022): \$23.00

Parked In Fire Lane (BCC 23.11.503): \$100.00

Unauthorized Use of Disable Placard (RCW 46.19.050.02): \$450.00

Parked In Access Area By Handicap Stall (RCW 46.19.050.03): \$450.00

Parked In A Handicapped Zone W/O Permit (RCW 46.19.050.04): \$450.00

Parking For Certain Purposes Unlawful (WAC 308-330-436): \$29.00

Parking OF Trucks, Trailers Or Other (BCC 11.70.100): \$50.00

Parked Traveled Portion Of Roadway (BCC 11.23.025): \$29.00

Parked Over 24 Hours (BCC 11.23.020): \$29.00

Parked Wrong Way On Street (RCW 46.61.575): \$29.00

For Hire Vehicle Stopping, Standing, Parking (BCC 11.23.026): \$29.00

Parked Vehicle Charging Station (RCW 46.08.185): \$124.00

ation Adjustments ot Implemented

\$ 23.00	\$ 29.00	\$ 40.00
\$ 24.00	\$ 30.00	\$ 42.00
\$ 25.00	\$ 31.00	\$ 43.00
\$ 26.00	\$ 32.00	\$ 45.00
est. \$27.00	\$ 33.00	\$ 47.00

PARKING INFRACTION – CHEAT SHEET (03/29/2013)

Parking Restricted--NPAT, etc. (RCW 46.61.570): \$29.00

Violation of a RPZ Restriction (BCC 11.23.010): \$40.00

Parking Restricted Specific Streets (BCC 11.23.010): \$29

Parking Too Close to Fire Hydrant (RCW 46.61.570): \$40.00

Parking on Sidewalk (RCW 46.61.570): \$40.00

Parking Too Close to Intersection (RCW 46.61.570): \$40.00

Parking Too Close to Crosswalk (RCW 46.61.570): \$40.00

Parking on Bridge or in Tunnel (RCW 46.61.570): \$40.00

Parking Too Close to Railroad Crossing (RCW 46.61.570): \$40.00

Parking Too Close to Driveway (RCW 46.61.570): \$40.00

Parking Too Close to Stop or Yield Sign (RCW 46.61.570): \$40.00

Parking Too Close to Traffic Control Signal (RCW 46.61.570): \$40.00

Overtime Parking (BCC 11.23.022): \$23.00

Parked In Fire Lane (BCC 23.11.503): \$100.00

Unauthorized Use of Disable Placard (RCW 46.19.050.02): \$450.00

Parked In Access Area By Handicap Stall (RCW 46.19.050.03): \$450.00

Parked In A Handicapped Zone W/O Permit (RCW 46.19.050.04): \$450.00

Parking For Certain Purposes Unlawful (WAC 308-330-436): \$29.00

Parking OF Trucks, Trailers Or Other (BCC 11.70.100): \$50.00

Parked Traveled Portion Of Roadway (BCC 11.23.025): \$29.00

Parked Over 24 Hours (BCC 11.23.020): \$29.00

Parked Wrong Way On Street (RCW 46.61.575): \$29.00

For Hire Vehicle Stopping, Standing, Parking (BCC 11.23.026): \$29.00

Parked Vehicle Charging Station (RCW 46.08.185): \$124.00

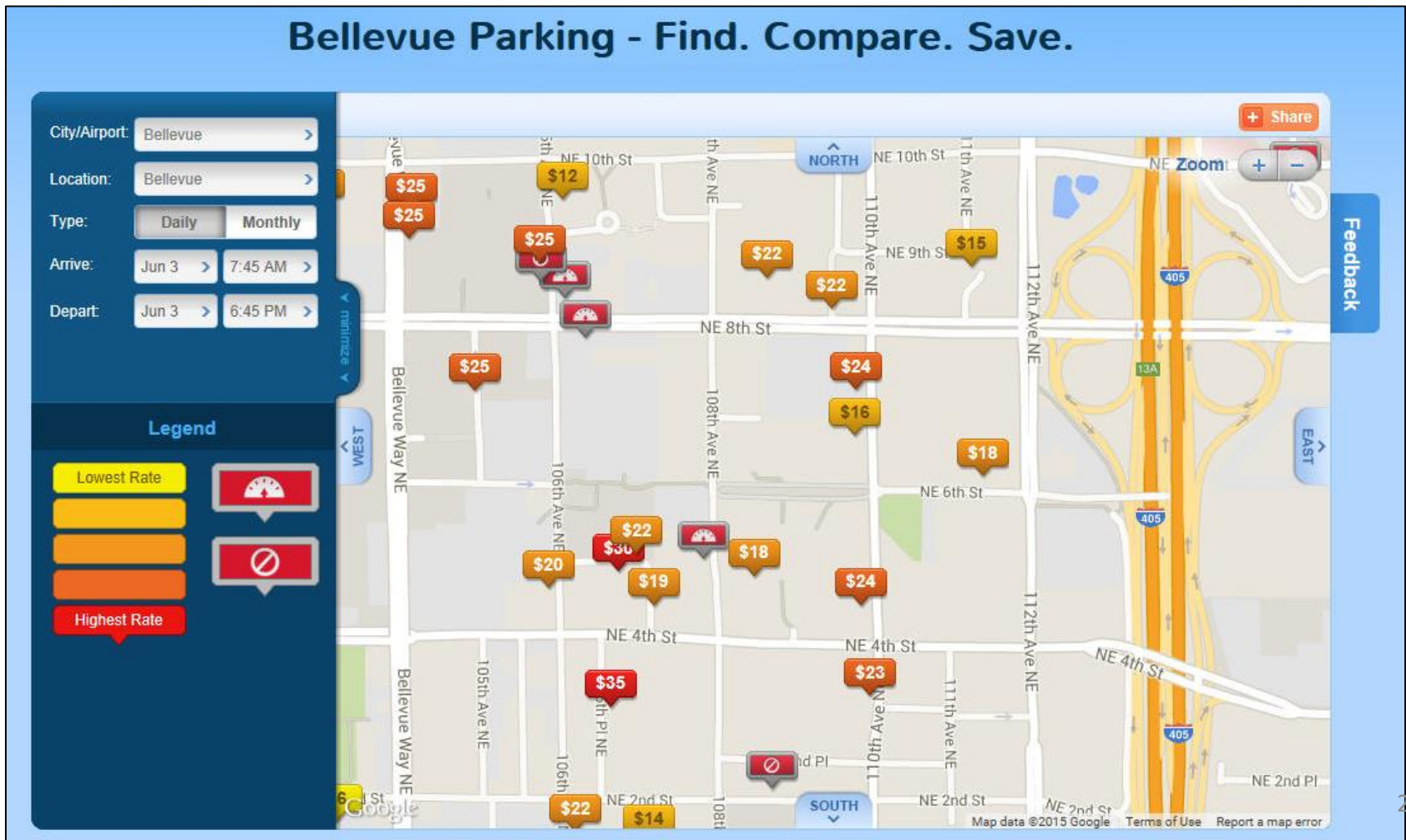
What If?

Inflation Adjustments Not Implemented			
2008	\$ 23.00	\$ 29.00	\$ 40.00
2010	\$ 24.00	\$ 30.00	\$ 42.00
2012	\$ 25.00	\$ 31.00	\$ 43.00
2014	\$ 26.00	\$ 32.00	\$ 45.00
2016	est. \$27.00	\$ 33.00	\$ 47.00

Overtime Parking Penalty

Current=\$23

Proposed =\$40



Extend Parking Ordinance Threshold

- Safety or Spillover Related
- Current Threshold is 300'
- Proposed Threshold is 1000'



Repeated Overtime

- Allow Reticketing of Overtime Parking
- Further Discourage All Day Parking On-street
- Current Police Practice
- Not Diamond Parking Practice
- Would be Used with Discretion
- Seattle Currently Uses This
- Police and Trans Recommendation

