

Wilburton – Grand Connection Study

July 25th, 2016 – Grand Connection Visioning Update

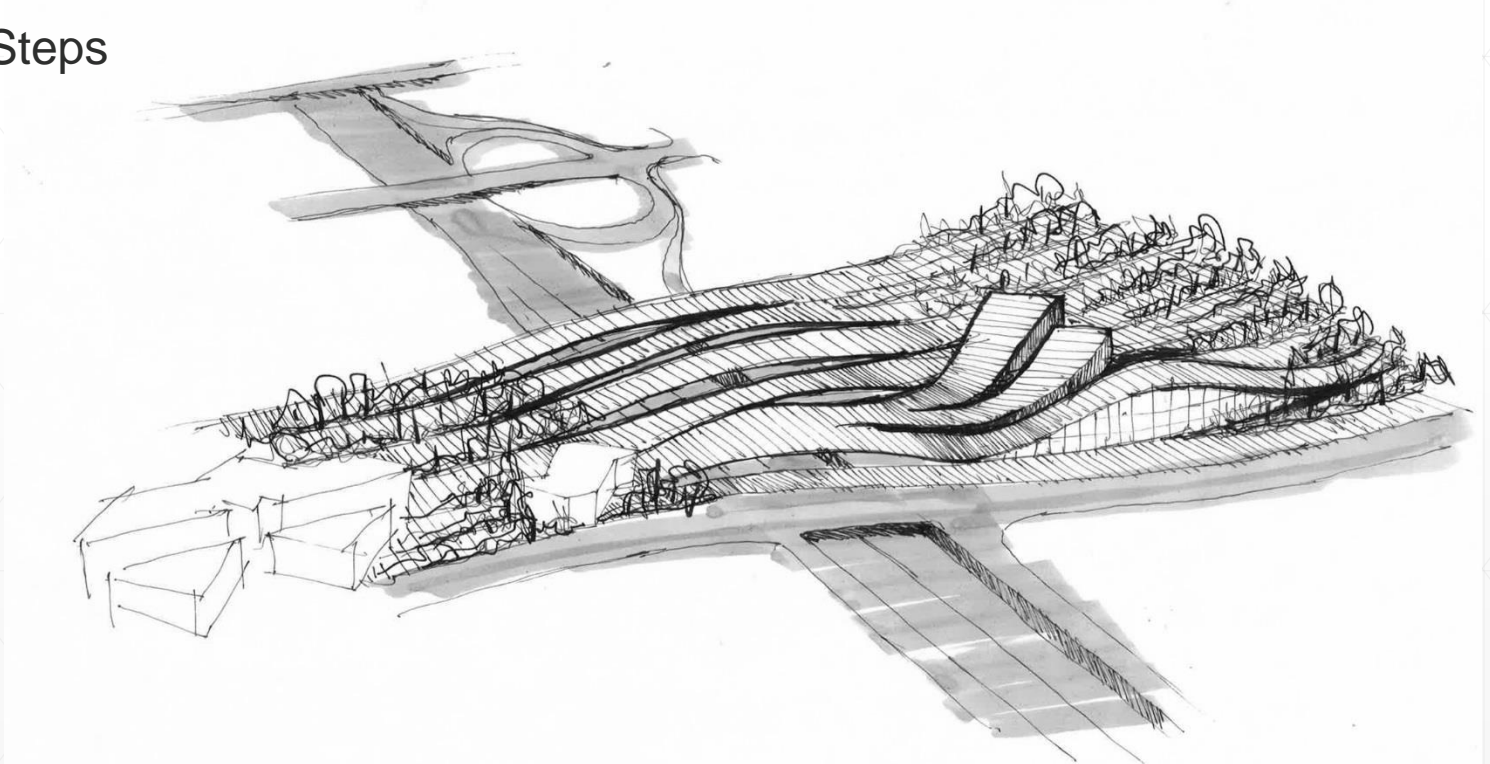
Dan Stroh – Planning Director

Bradley Calvert – Community Development Program Manager



Grand Connection Visioning Update

- Tonight staff will update Council on the progress of the Grand Connection Visioning
 - Engagement
 - Emerging Themes and Visions
 - Next Steps



Where We Are



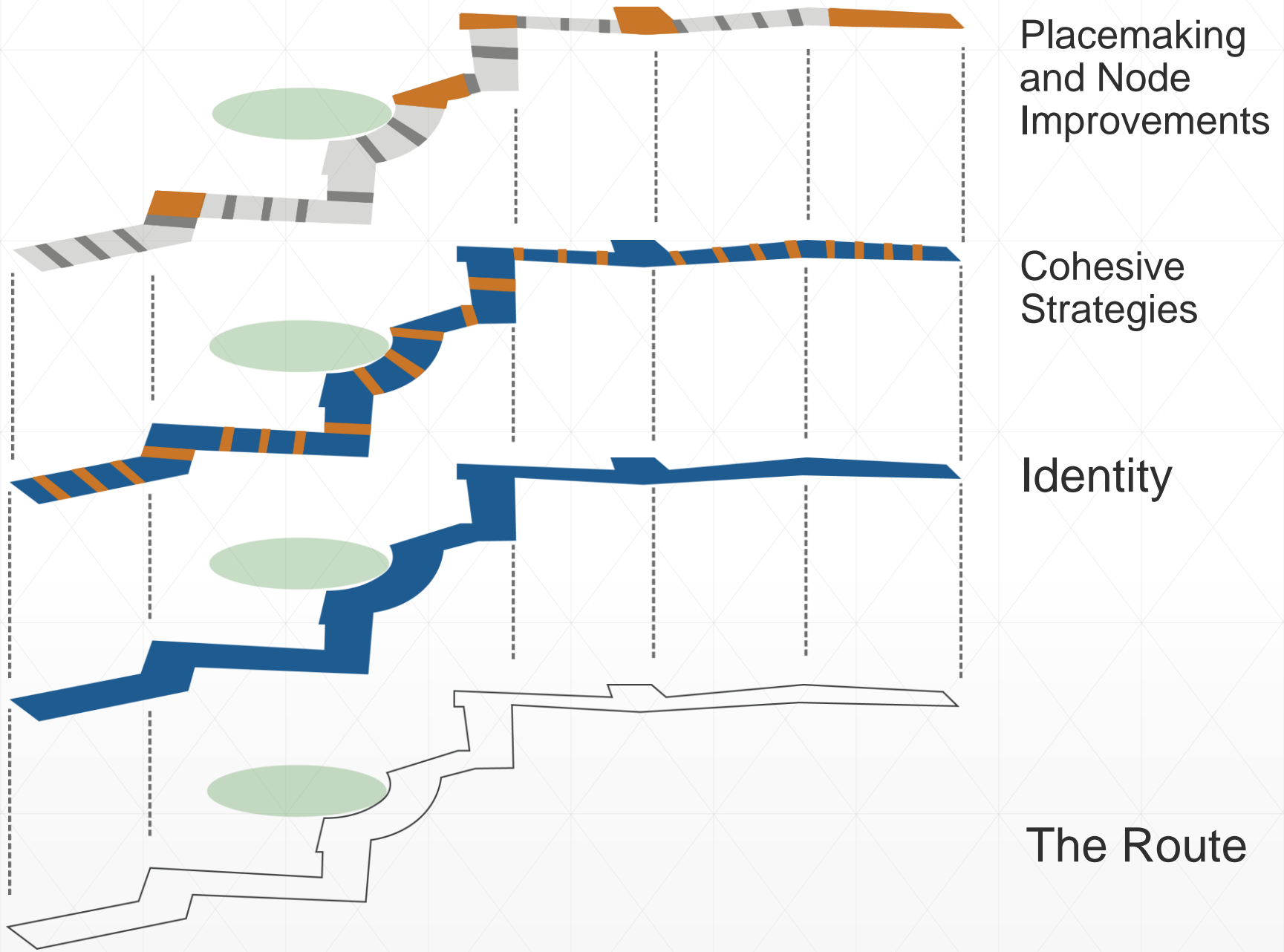
Public Engagement

- Charrette Website
 - Views from over 20 countries, 35 states, and over 170 cities
 - Comment submission form
 - Comments regarding improving park entrance, weather protection, encouraging social engagement, improved pedestrian/bicycle experience and safety, more recreational activities
 - Interactive map
- Interviews
 - Downtown Park
 - Transit Center
 - Compass Plaza
- City Hall engagement map
 - Over 300 total comments
- Stakeholder engagement
 - Property owners
 - Technology companies



Concepts and Designs

- Design and Engagement began in April 2016
- City and Consultant workshop in May
- Scope of work – *Sequence One*
 - Establish an identity to be conveyed through the entire route
 - Identify opportunities for improvements along the route from Meydenbauer Bay to Meydenbauer Convention Center
 - Immediate, intermediate, and long-term solutions
 - Identify opportunities to support the route identity through other cohesive identity strategies
 - Paving
 - Street furniture
 - Landscaping



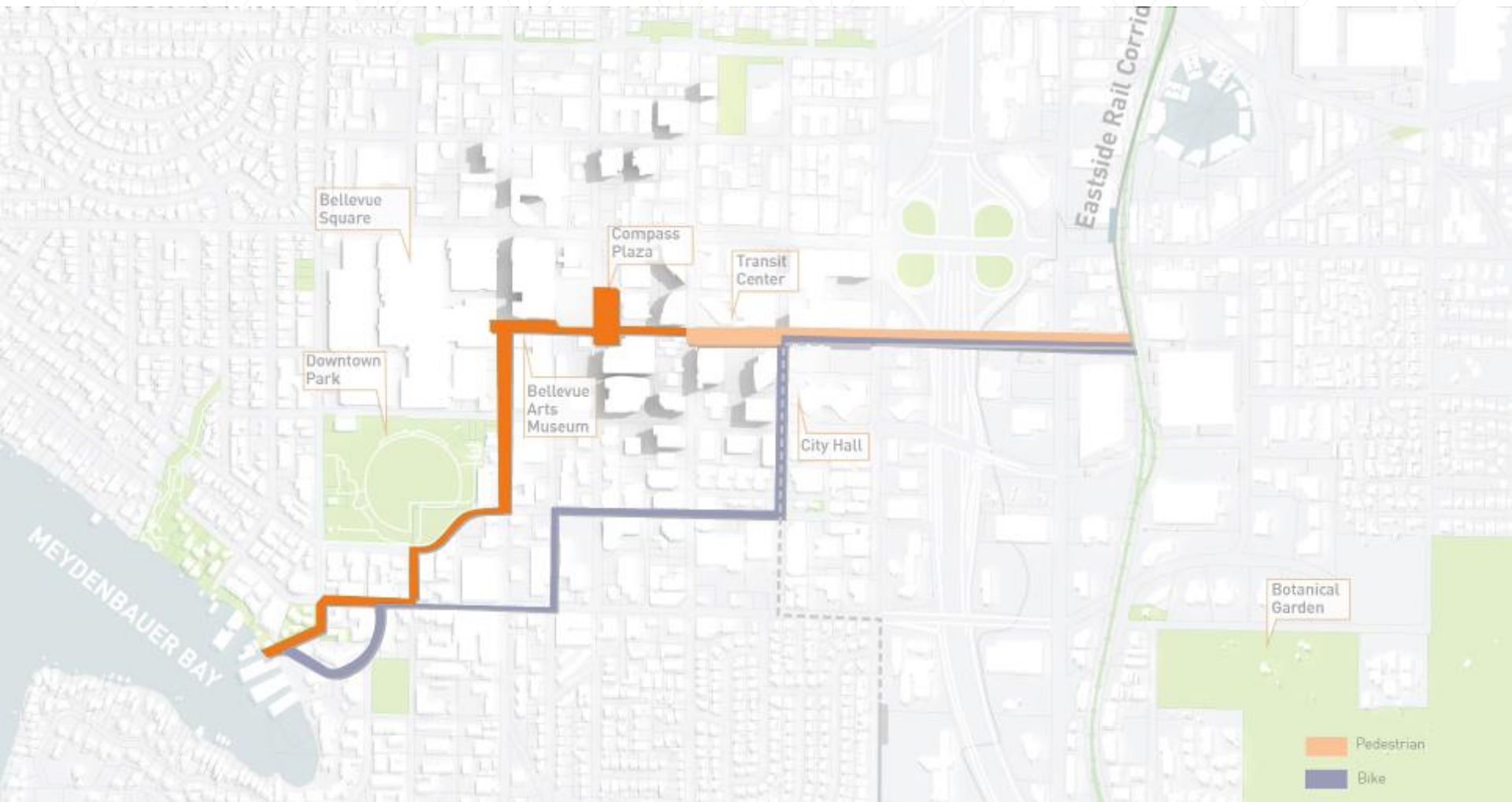
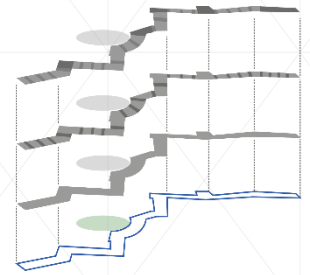
Placemaking
and Node
Improvements

Cohesive
Strategies

Identity

The Route

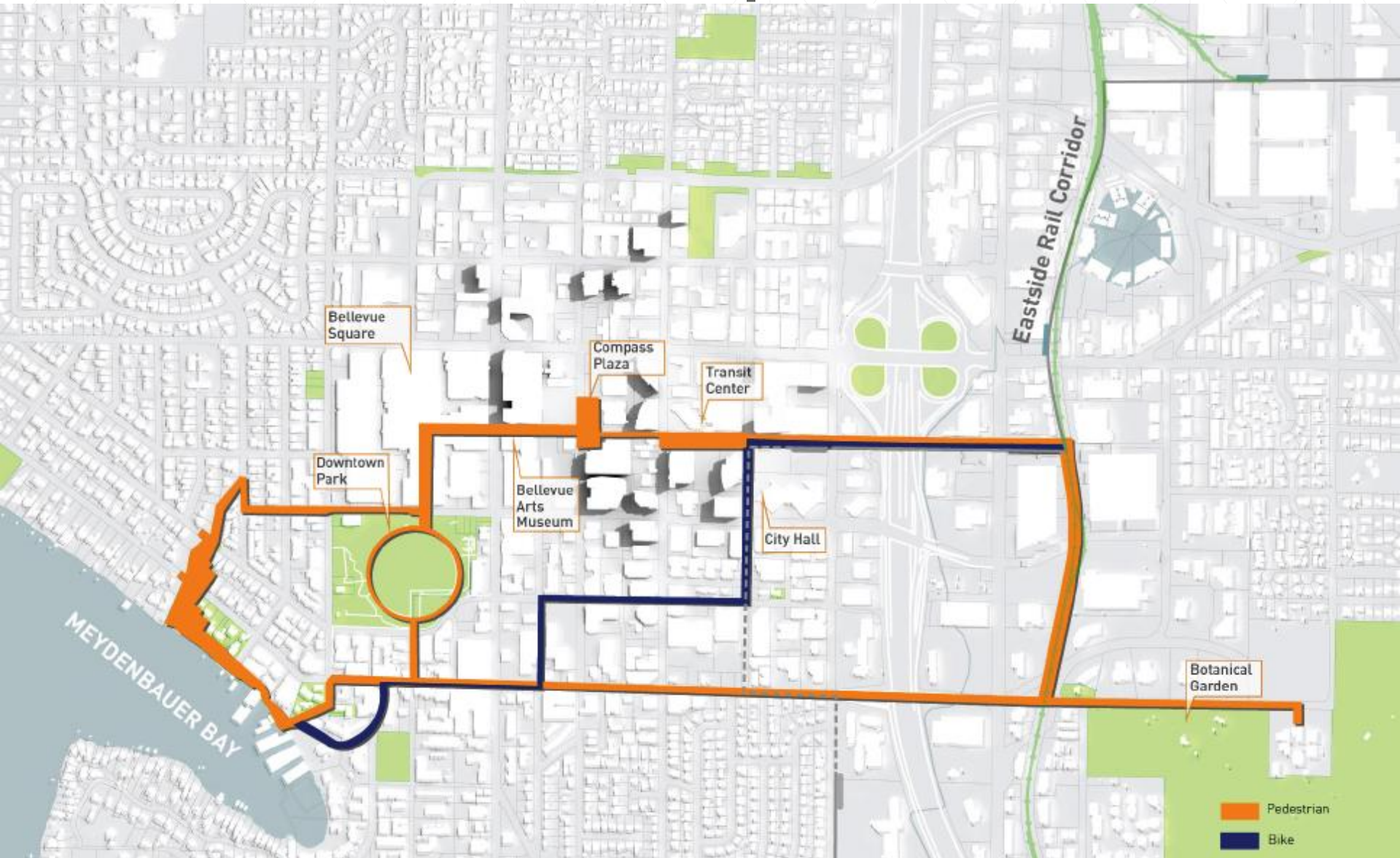
The Route

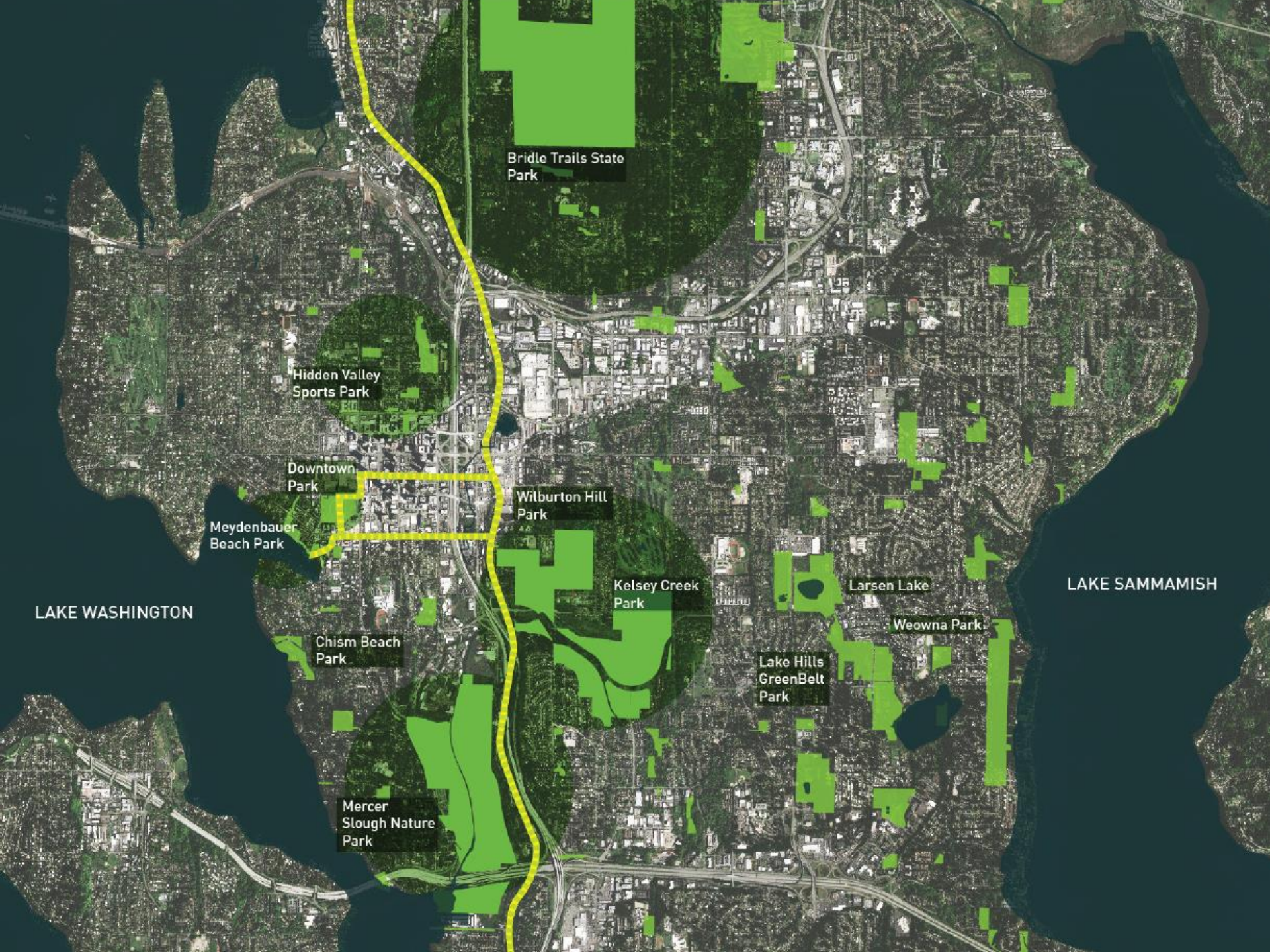


Recommendations: Expand the Route

- Missing link in Bellevue's green spaces
- Connect Bellevue's green and natural assets
 - Meydenbauer Bay → Downtown Park → Grand Connection → Eastside Rail Corridor → Botanical Garden → Wilburton Hill Park
- Consider Main Street as a secondary route
 - Connect to Botanical Garden
 - Create an active loop that integrates with the Eastside Rail Corridor
- Consistent theme through:
 - Public Engagement
 - Public Comments
 - Urban Land Institute advisory panel

Recommendations: Expand the Route





Bridle Trails State
Park

Hidden Valley
Sports Park

Downtown
Park

Meydenbauer
Beach Park

Chism Beach
Park

Mercer
Slough Nature
Park

Wilburton Hill
Park

Kelsey Creek
Park

Lake Hills
GreenBelt
Park

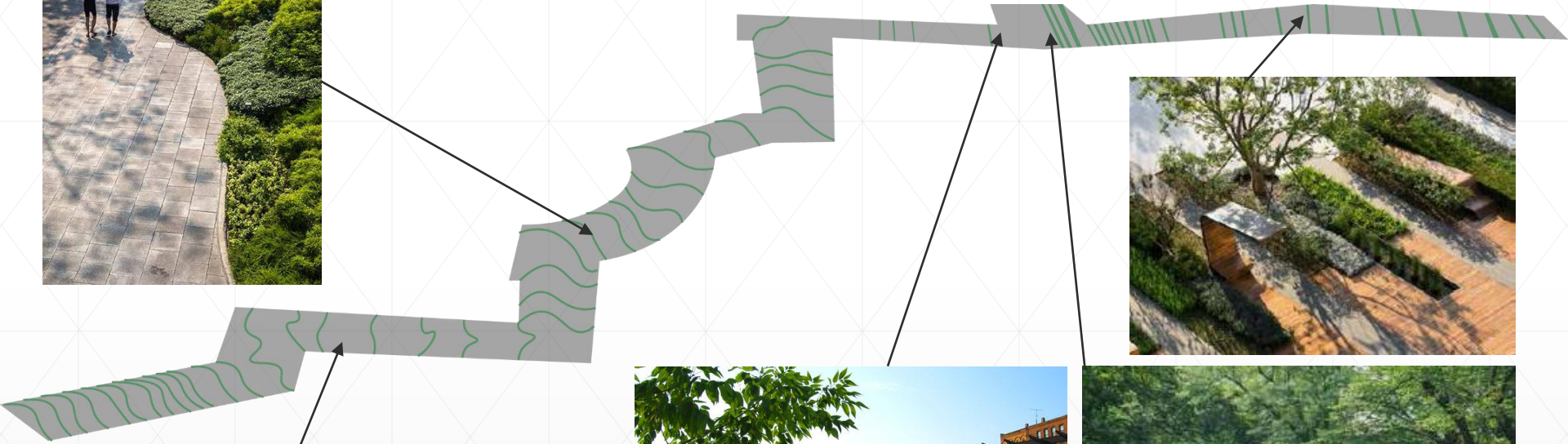
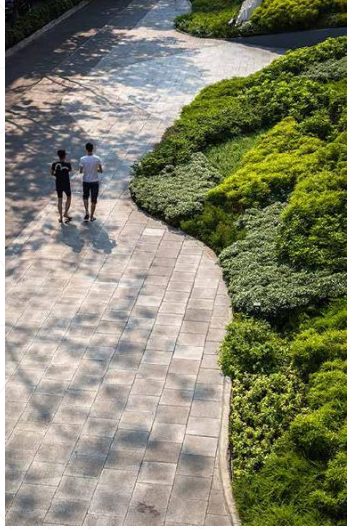
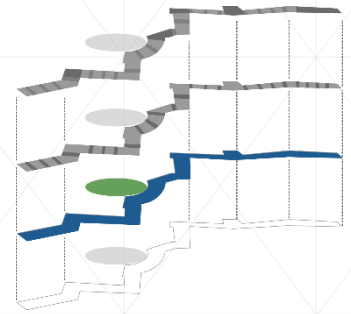
Larsen Lake

Weowna Park

LAKE SAMMAMISH

LAKE WASHINGTON

Identity: Ecology and Sustainability



Identity: Playful Landscape



Active and Exercise –
Complement and energize the
Downtown Park



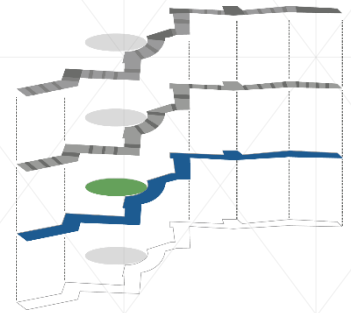
Splash –
Water based
play leading to
Meydenbauer
Bay



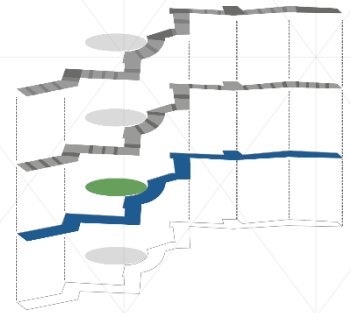
Illuminate – Play off the
vibrancy of Bellevue Square



Climb and Scale – Working
within the urban constructs of
center city Bellevue



Identity: Communal Spaces Expressing Bellevue's History



Diversity of Heritage:

- Native American
- Asian

Urban Orchard /
Urban Agriculture



Historical and
agricultural
education

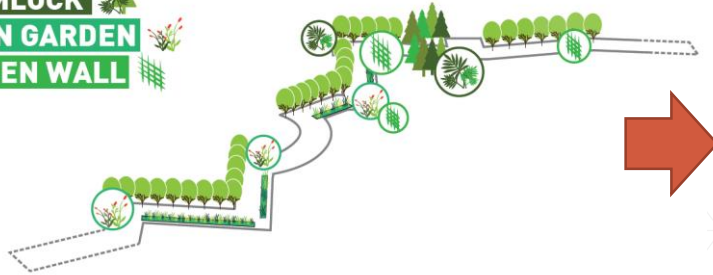


Water Garden – Activating the park
entrance

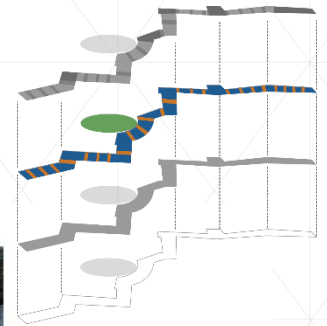
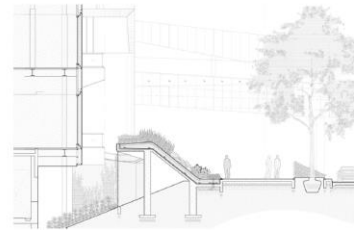
Cohesive Strategies

PLANTING LAYERS

ACCENT
HEMLOCK
RAIN GARDEN
GREEN WALL

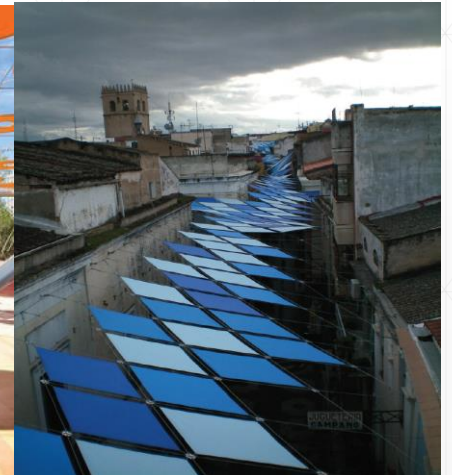
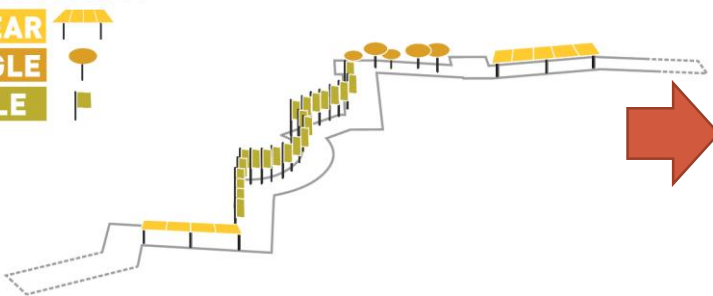


Walk of the Town by TROP: terrains + open space, Bangkok, Thailand

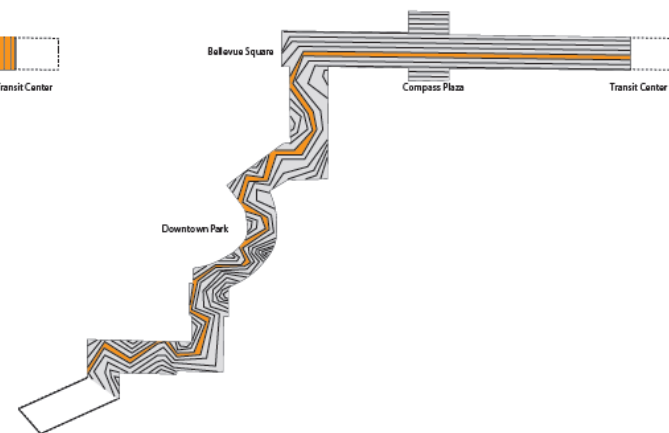
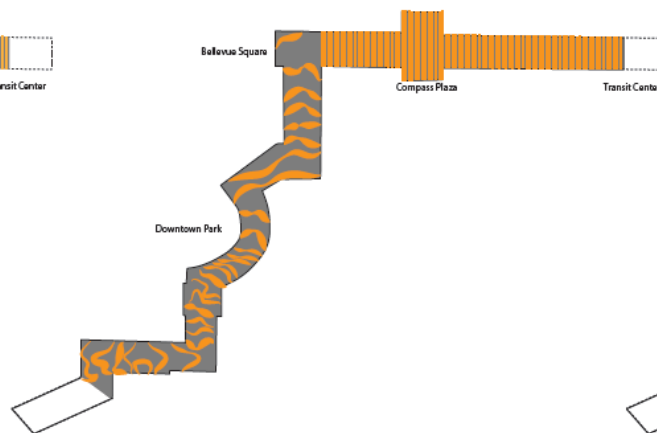
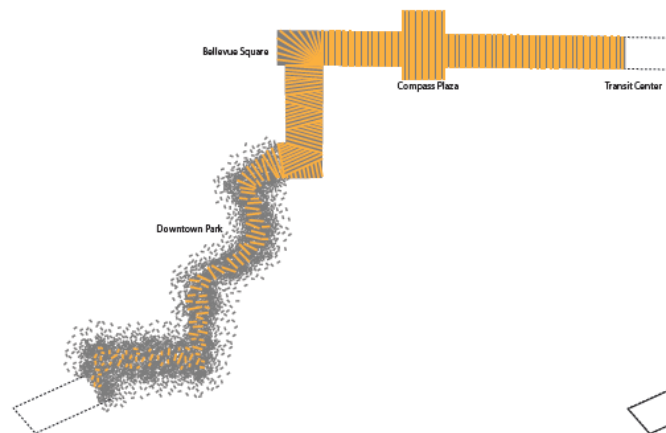
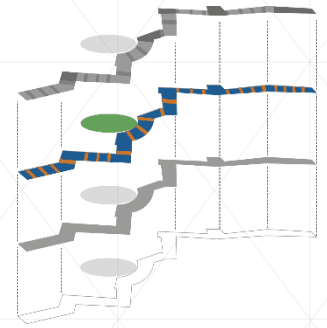
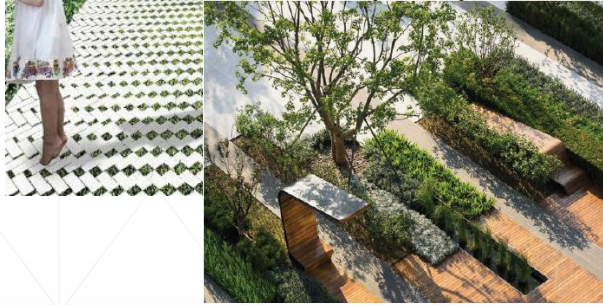


CANOPY LAYER

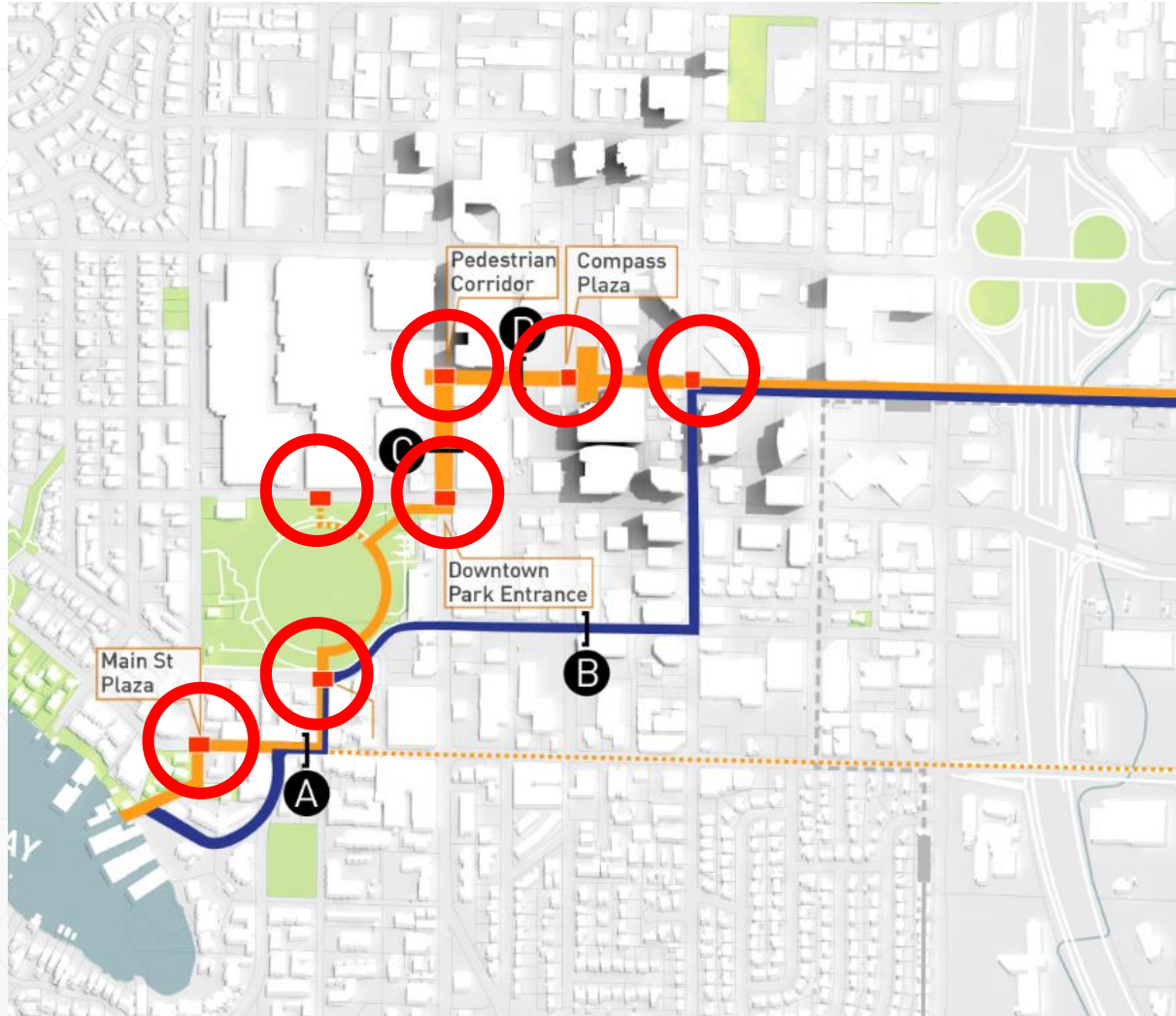
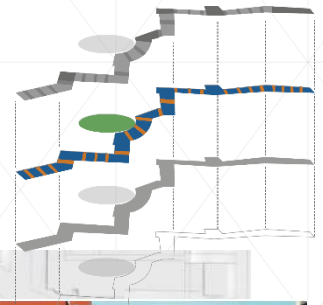
LINEAR
SINGLE
POLE



Cohesive Strategies - Paving

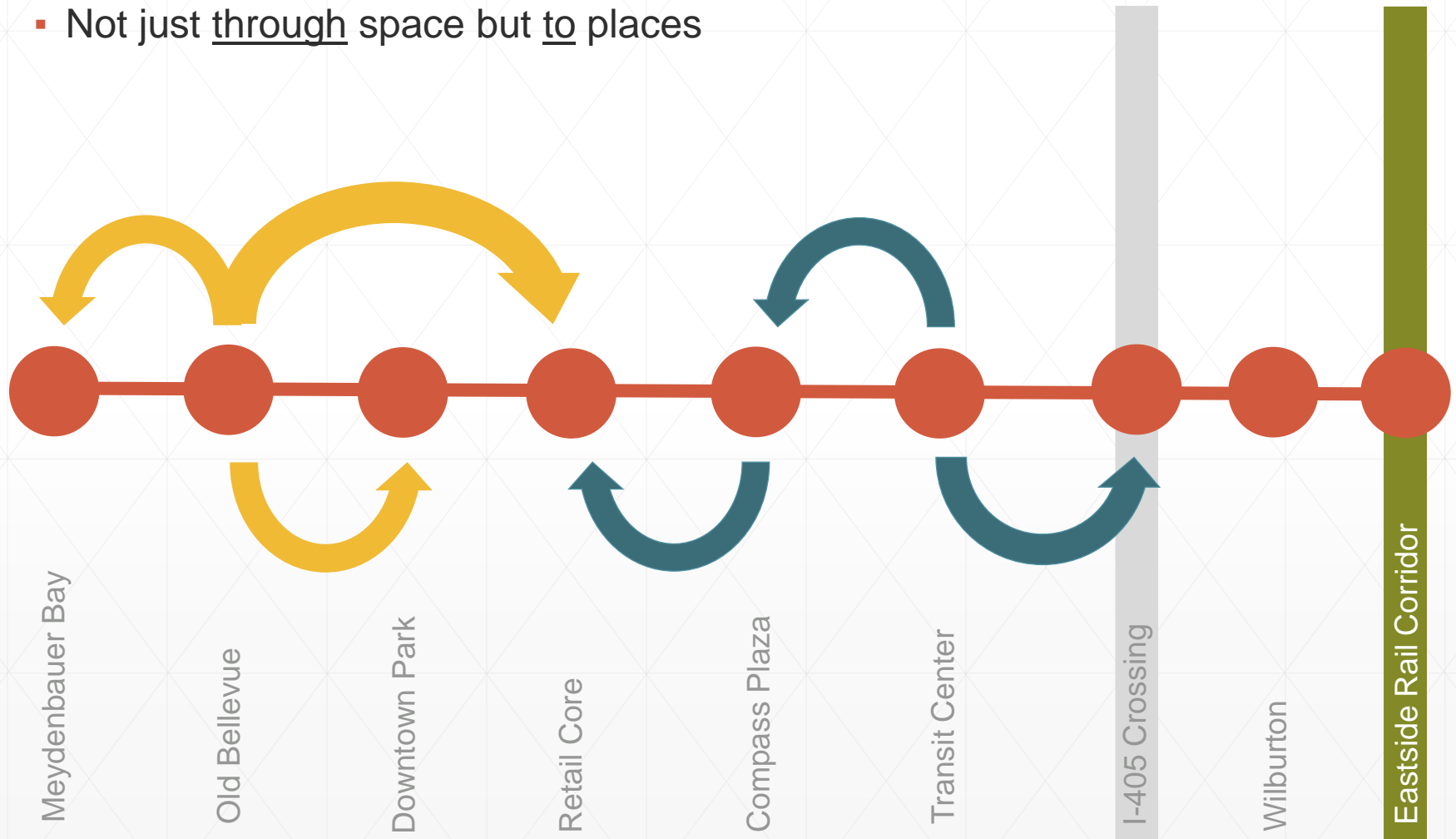


Cohesive Strategies: Raised Intersections

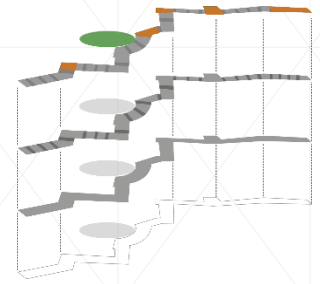


Placemaking

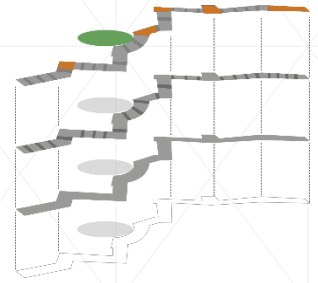
- Encouraging people to move from place to place
 - Not just through space but to places



Increase Park Permeability



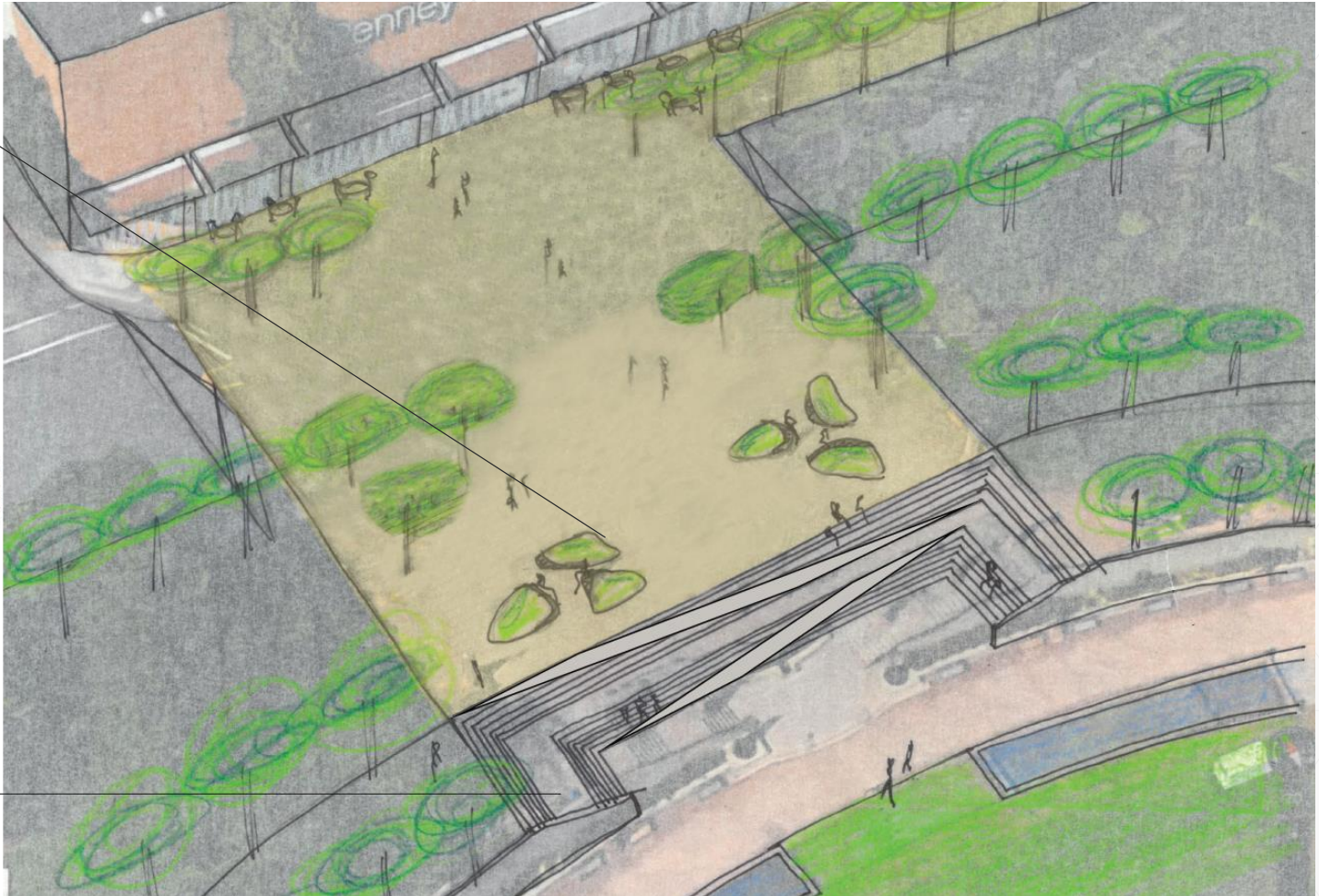
Increase Park Permeability



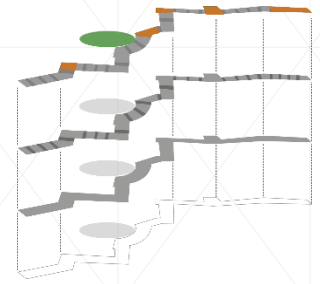
informal seating
areas



formal steps
provide access &
open visibility to
the park



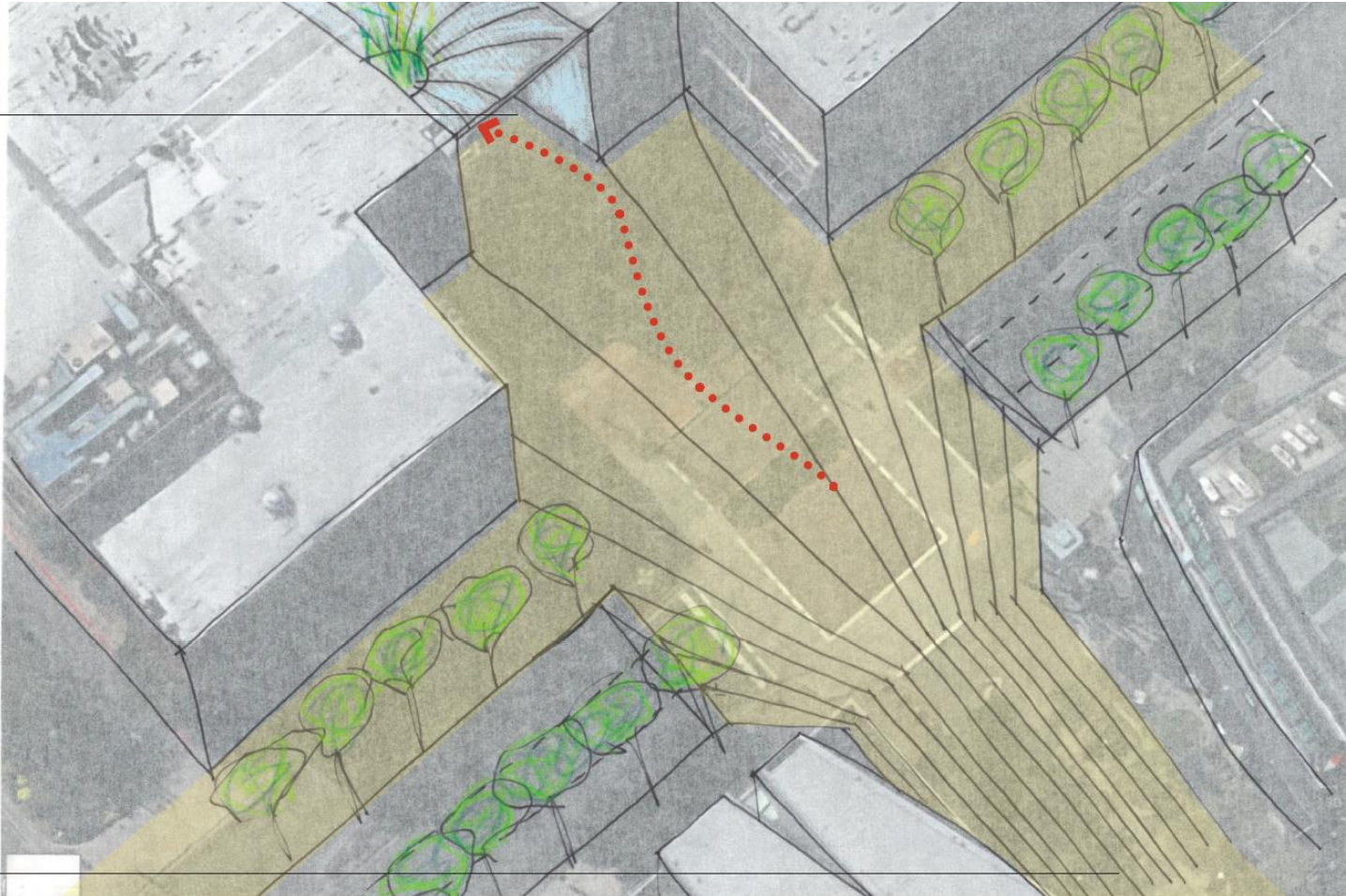
Bellevue Way and NE 6th Street



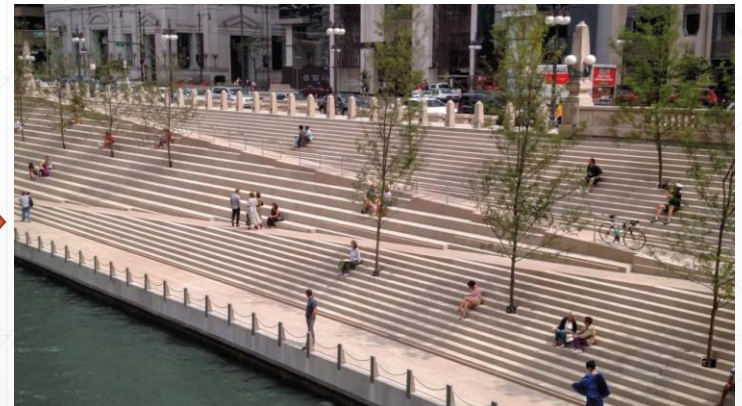
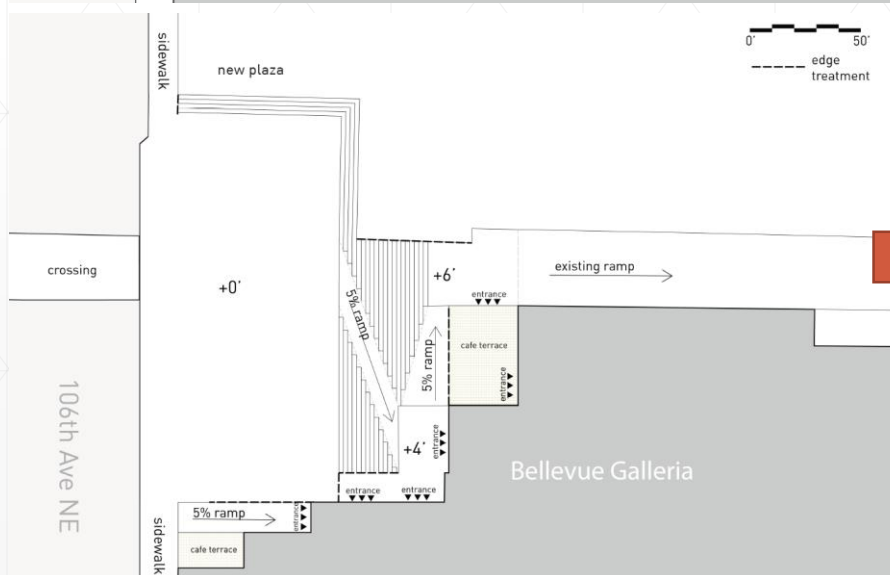
open mall creates
connected urban
spaces



paving pattern
provides
direction & scale



Compass Plaza



Compass Plaza



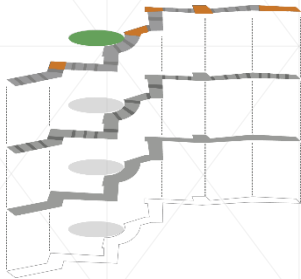
Arts Fair



Market



Education and
Performance Space

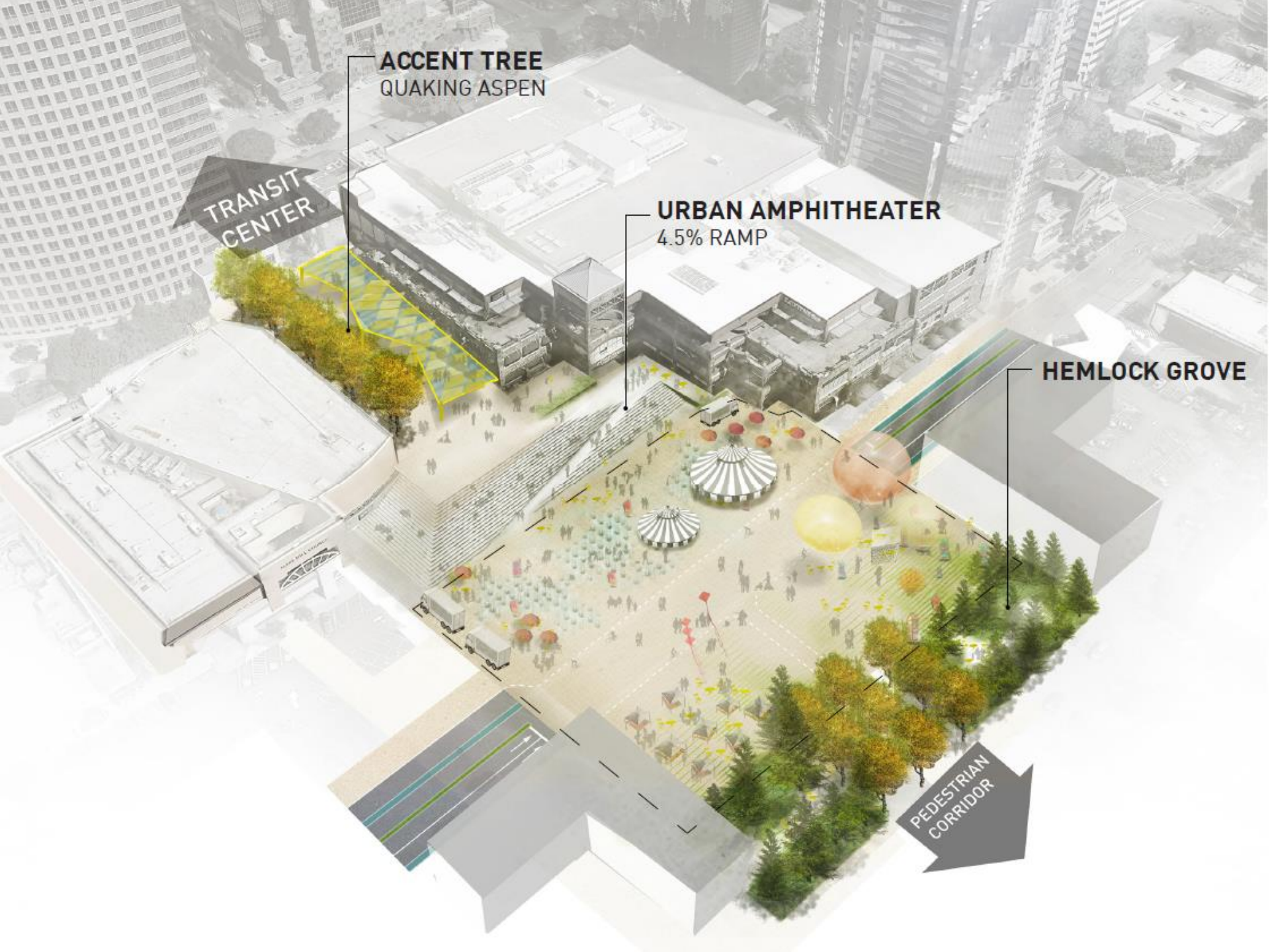


Hanko Ice Cream Kiosk, Finland | Satoshi Ohtaki + working group

DAY



NIGHT



ACCENT TREE
QUAKING ASPEN

**TRANSIT
CENTER**

URBAN AMPHITHEATER
4.5% RAMP

HEMLOCK GROVE

**PEDESTRIAN
CORRIDOR**

Art: SuttonBeresCuller



Perch – Northshore School District



Sequence/Consequence



Trailer Park



Big Top Grand Stand

- Art as education
 - Environment
 - History
- Urban transformation
 - Temporary
 - Performance
 - Playful
 - Interactive
 - Spatial
 - Wayfinding

Next Steps

- Continue refinement of Sequence One work
 - Open House (online and City Hall)
- Begin work of Sequence Two
- ULI Advisory Panel Report
- Select Wilburton Land Use and Urban Design Consultant
 - RFP Release Last Week
 - Selection – End of August

Questions?