



2016 CPAs

Bellevue City Council
March 7, 2016

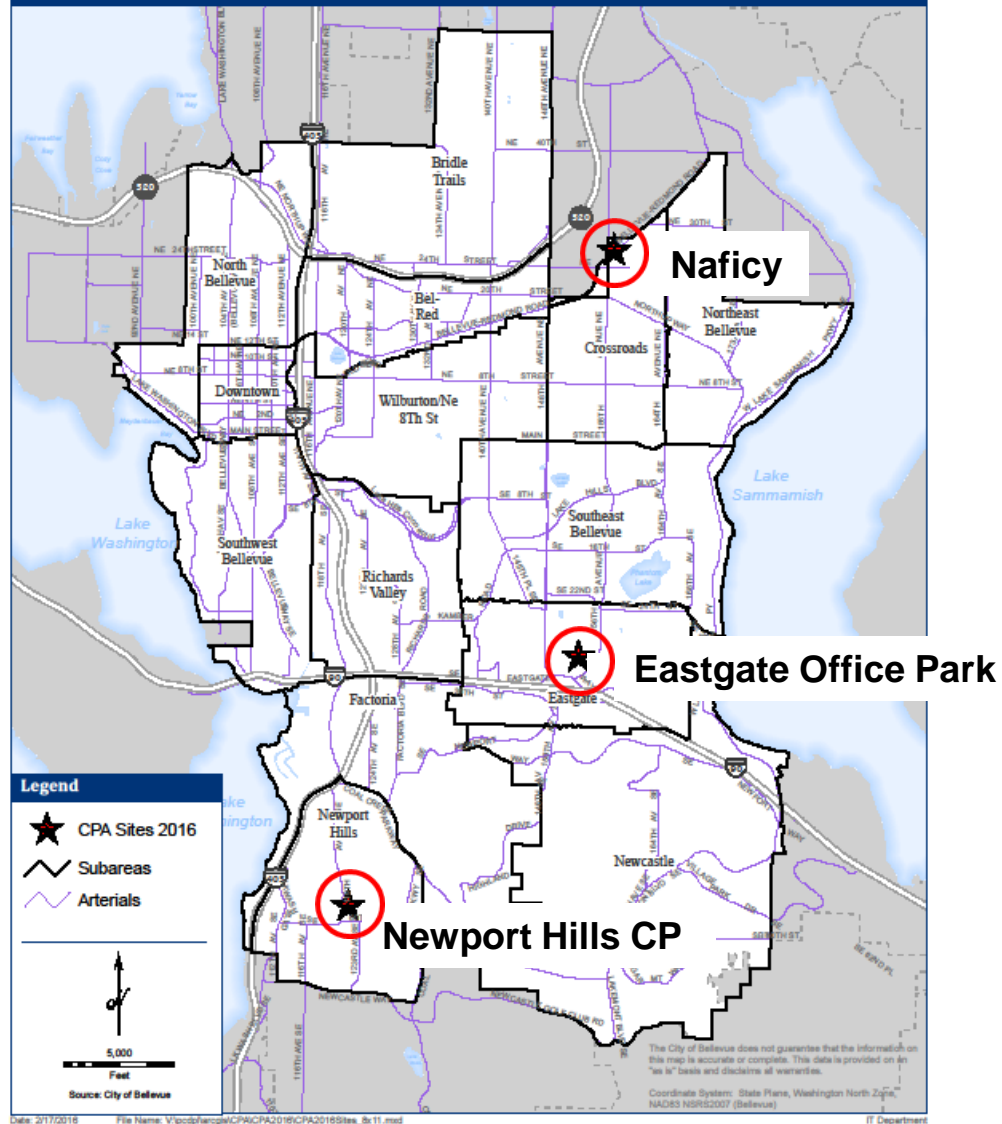


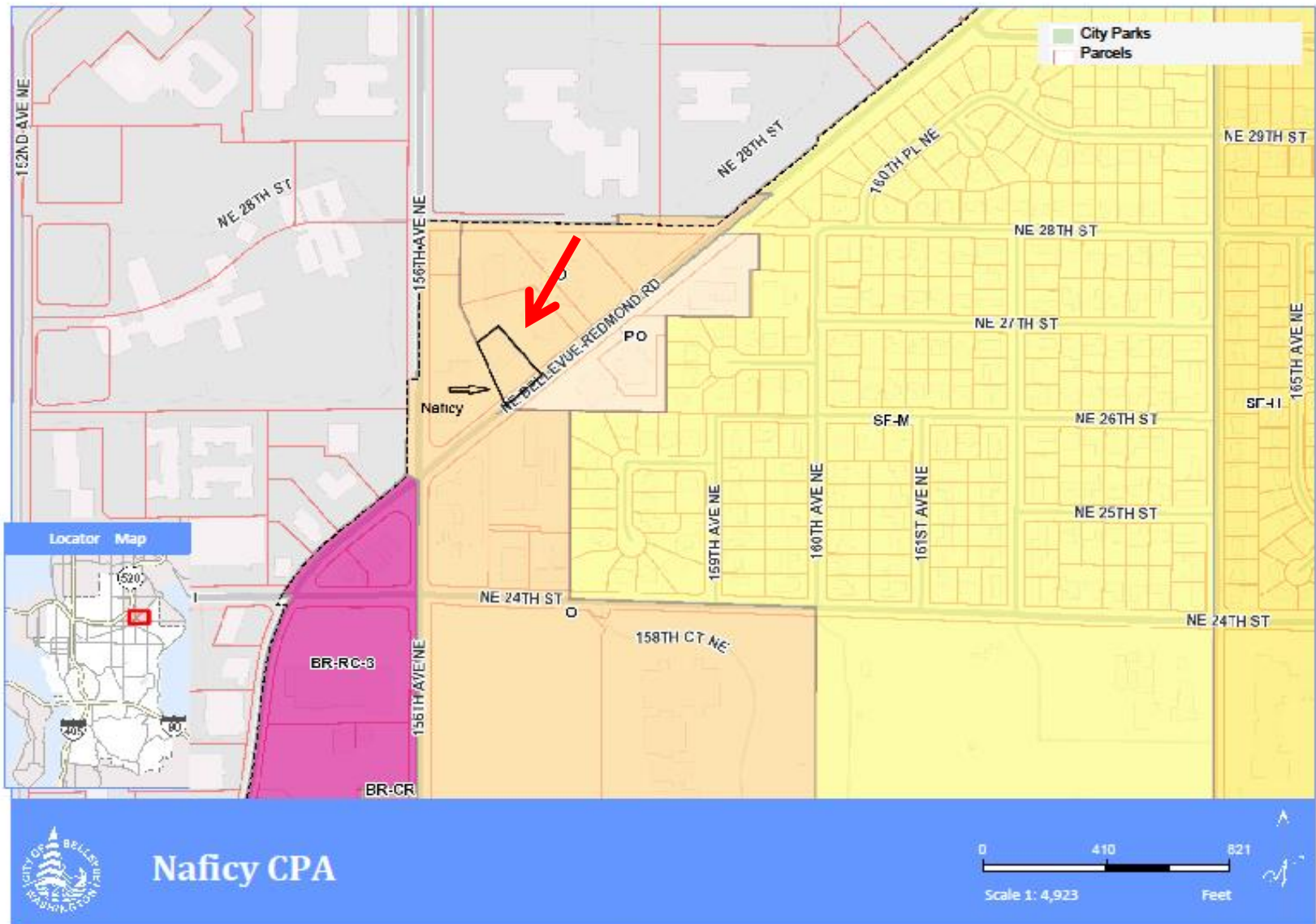
2016 Annual Comprehensive Plan Amendments (CPA)

An Overview of the CPA review process

- Applications to amend the plan are submitted and considered in a single annual process under GMA (Council FYI tonight)
- Threshold Review study, hearing, and action produces proposed amendments for the annual CPA work program (Council action to adopt work program)
- Final Review study, hearing, and action produces recommended amendments to the Comp Plan (Council action on proposed ordinances)
- Five privately-initiated applications in 2016

2016 Comprehensive Plan Amendments

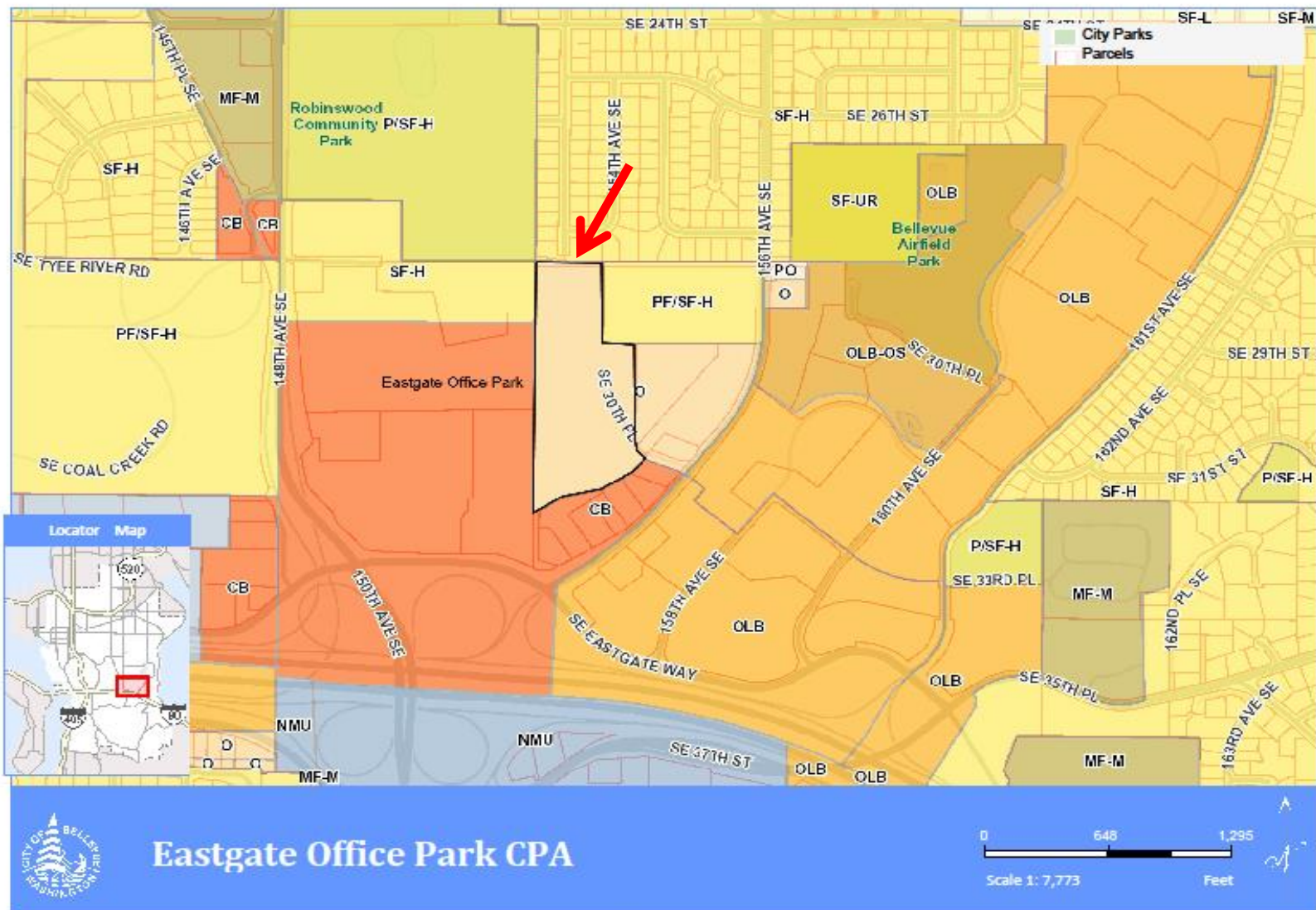


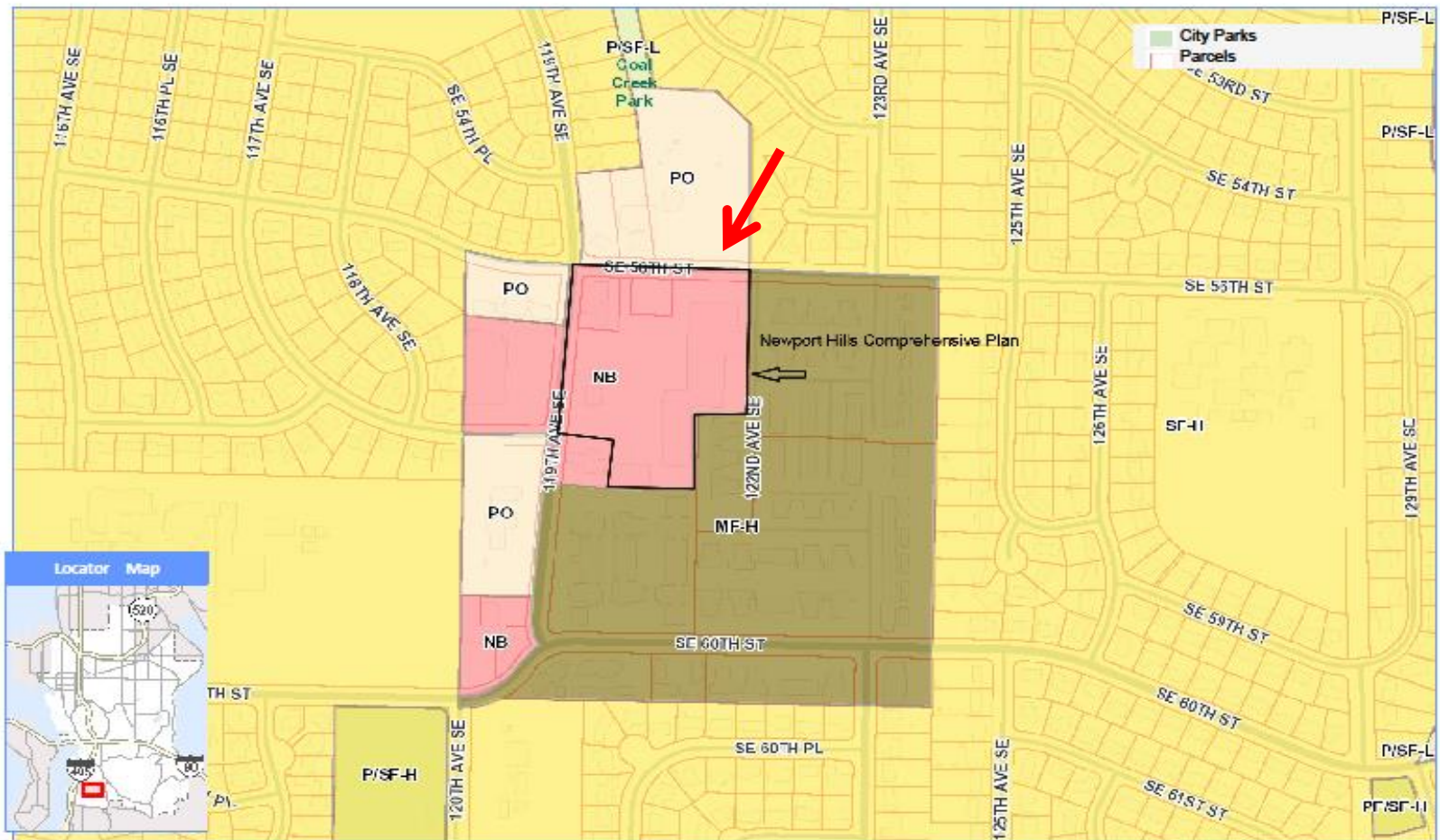


Naficy CPA

Map Generated on: 02/18/2016

The City of Bellevue does not guarantee that the information on this map is accurate or complete. This data is provided on an "as is" basis and disclaims all warranties.





Newport Hills CP CPA



Map Generated on: 02/18/2016

The City of Bellevue does not guarantee that the information on this map is accurate or complete. This data is provided on an "as is" basis and disclaims all warranties.

Park Lands Policy #1 and #2

CP Amendment Proposals years 2015 through 2016

Block2 - PA xx1

Protect and prevent park lands, acquired through city wide bond measures (i.e., Bellevue taxpayers), from being used for purposes that are inconsistent with park dedicated uses, unless such uses are approved by citizens of the city.

Block2 - PA xx2

Require park property restricting public use and/or park access for longer than a 6 month duration, shall be deemed permanent and require review and approval by the City Parks and Community Services Board for closures related to non-park uses.

Block2 - PA xx3

Require park lands that are to be converted (or partially converted) for uses other than park dedicated use, shall be formally re-zoned and subject to the city public review process.

CP Amendment Proposals for year 2016

Block 2 1)

Prohibit park lands acquired through city-wide bond measures (i.e., Bellevue taxpayers) from being used for non-park purposes, unless such uses are approved through a city-wide ballot measure.

Block 2 2)

Per RCW 79A.25.100 and RCFB Manual 7 use of any park property for non-park uses that exceeds access for longer than six months duration shall be deemed permanent and shall require approval by the City Parks and Community Services Board and City Council.

Block 2 3)

Require City owned park lands to be designated as such in the Comprehensive Plan and zoned with a 'Park' zoning designation, limiting uses solely to active and passive recreation and open space.

Block 2 4)

Prior to using any dedicated public park land for non-recreational or open space use, the Comprehensive Plan shall be amended and the property shall be rezoned as a condition of such use.



Next Steps

- Introduced to Planning Commission (March 9)
 - Enhanced public outreach
 - Concurrent zoning by statute
- Threshold Review public hearing (April)
- Council action (June)
- Final Review to follow