

Pedestrian Bridge Development Agreement

MAY 16, 2016

Development Agreement - Tool

- City codes establish design standards to ensure attractive high quality development
- The Pedestrian Corridor is an important element of the Grand Connection
- KDC proposed a pedestrian bridge spanning the corridor
- A pedestrian bridge was not contemplated at this location
- A Development Agreement is being used to allow this proposal to proceed

Development Agreement - Outcomes

- Provides a process path to secure Council Approval
- Allows KDC to maintain construction schedule
- Provides time for Balmori to complete Grand Connection vision to inform future ground plane improvements
- Allows final ground plane improvements to come later
- Secures early improvements of western gateway to the Pedestrian Corridor

Development Agreement - Terms

- City Agrees to:
 - The proposed bridge design
 - A fifty (50) year term to use airspace and right-of-way for the pedestrian bridge
 - Opportunities to extend for three 10-year terms

- KDC Agrees to:
 - Construct ground plane improvements in phases
 - Provide \$500,000 performance security for ground plane improvements
 - An annual fee of \$28,000

**LINCOLN SQUARE EXPANSION
PLAZA + BRIDGE**
BY LIZA J. WASHINGTON

OWNER
KIMBER DEVELOPMENT COMPANY
175 WILLOW LANE
WILLOW, WA 98096



1. PLATE 10

WILCO PROJECT NUMBER
19728.004
DATE
03/24/16
VALUE
PERMIT
RESUBMITTAL

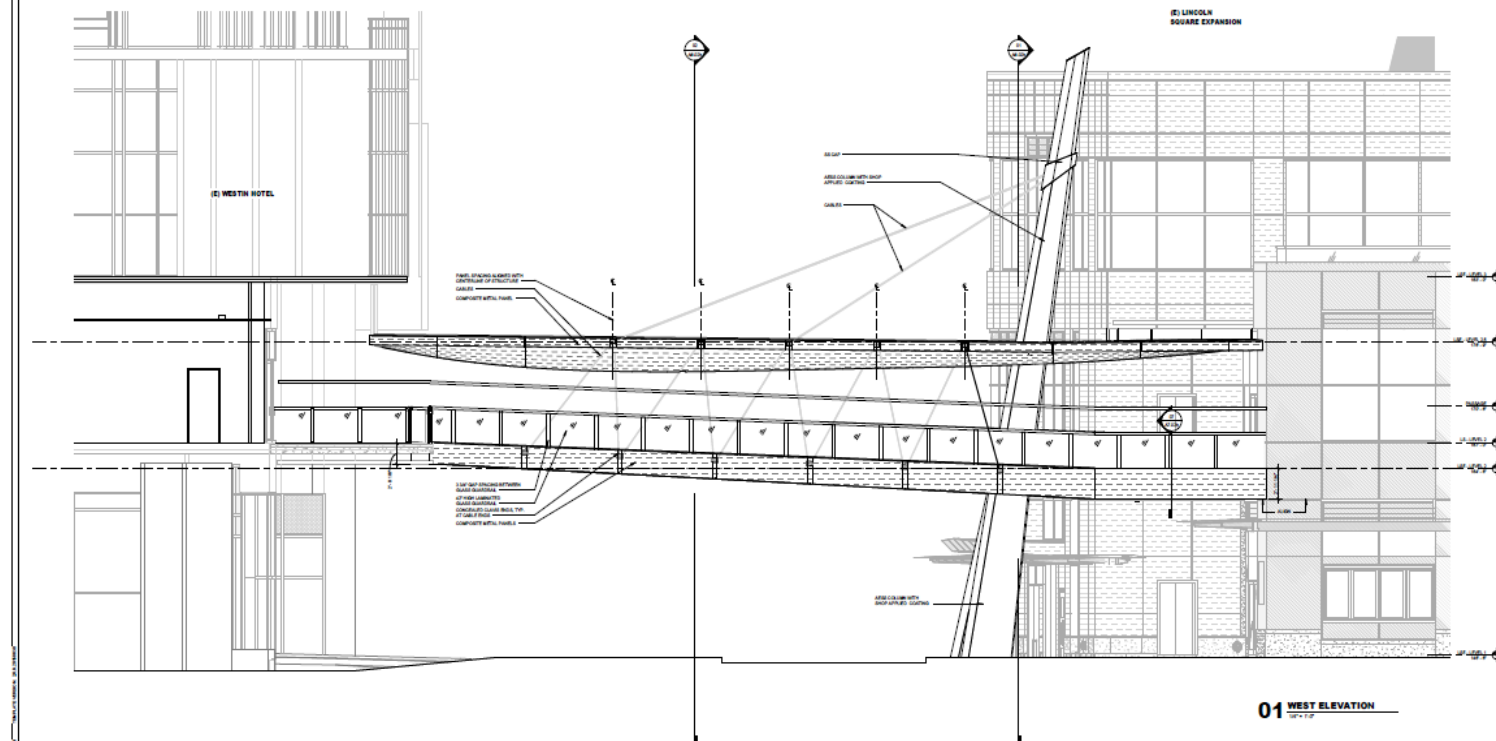
SHEET TITLE

ELEVATIONS

A5.01b



100



Council Action Requested

- Hold a Public Hearing on the Development Agreement
- Council Direction - Alternatives
 - Authorize the City Manager to execute the DA or
 - Direct staff to modify the DA for final action on May 23th