

East Link & OMF Project Updates

Bellevue City Council

September 6, 2016

Nancy LaCombe

Regional Transportation Project Manager

Maher Welaye

East Link Engineering Manager

John Murphy

Neighborhood Traffic Safety Services

Marie Jensen

East Link Outreach & Community Relations Lead

Why We're Here

- Link Operations and Maintenance Facility East (OMF East) status and update
- East Link update
- Coordinated projects update
- Schedule 74 Agreements with PSE
- Neighborhood Traffic Mitigation Committee draft mitigation plan
- Draft public relations plan

OMF East

- Three firms selected for RFP
 - Hansel Phelps
 - The Walsh Group
 - Kiewit
- RFP to be issued Friday 9/2
- Design-build coordination
- Proposals due January 10, 2017
- Concept validation and negotiations
- Notice to proceed June 2017 (target)
- Return to Council with Board approval and NTP

East Link

Groundbreaking April 22, 2016



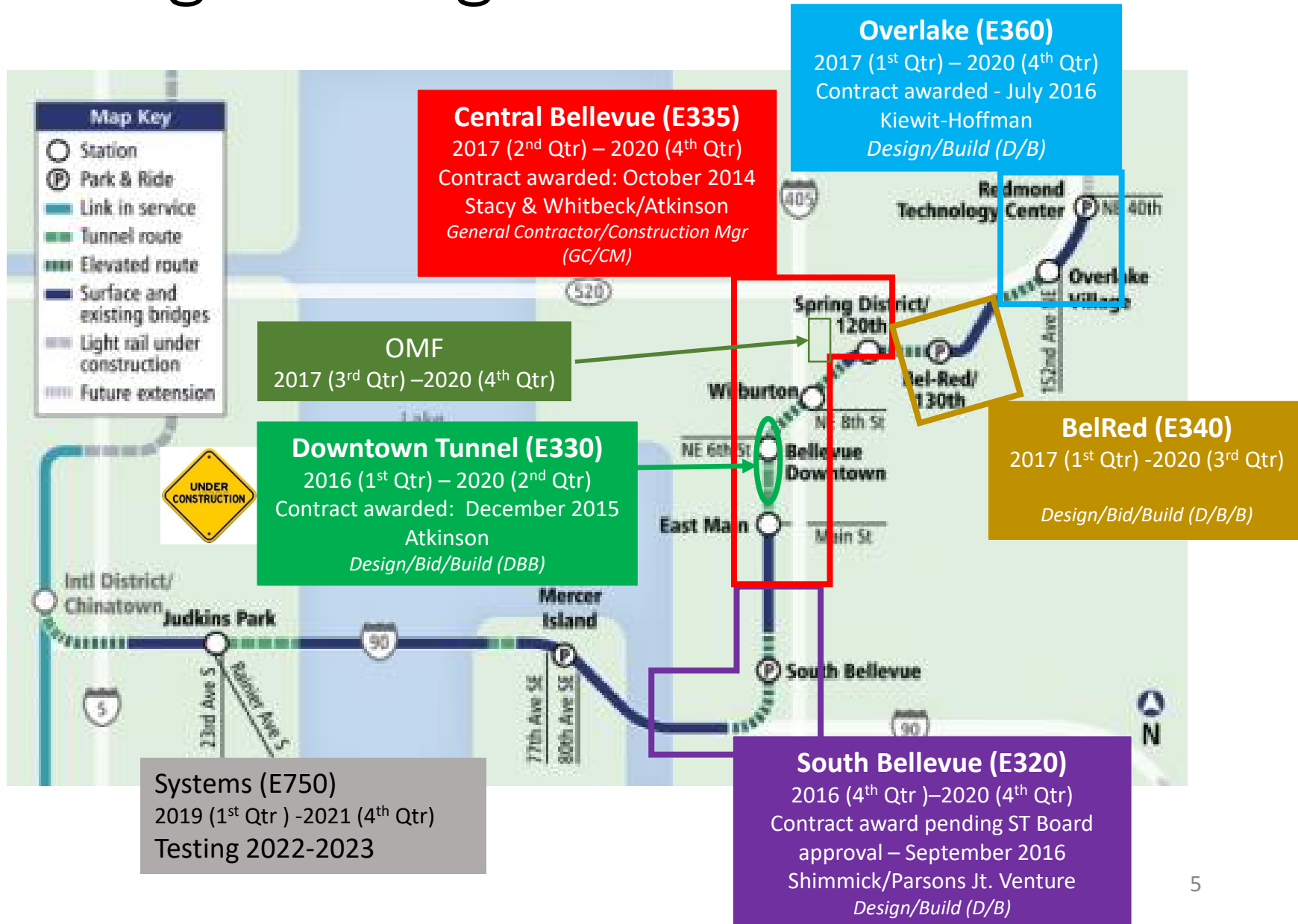
110th Soil Amendment



Tunnel South Portal

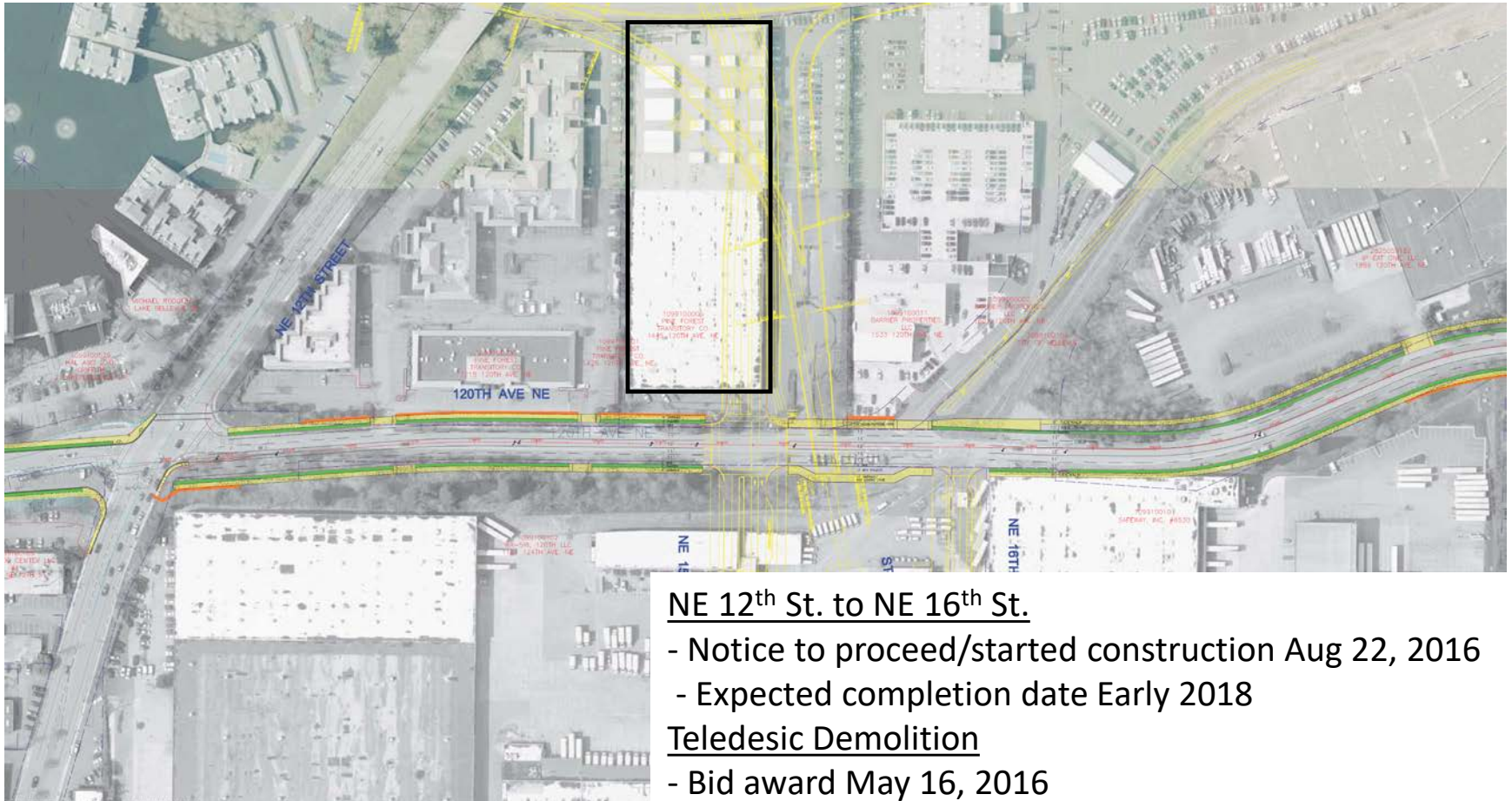


Engineering and Construction



Coordinated Projects

120th Avenue NE



NE 12th St. to NE 16th St.

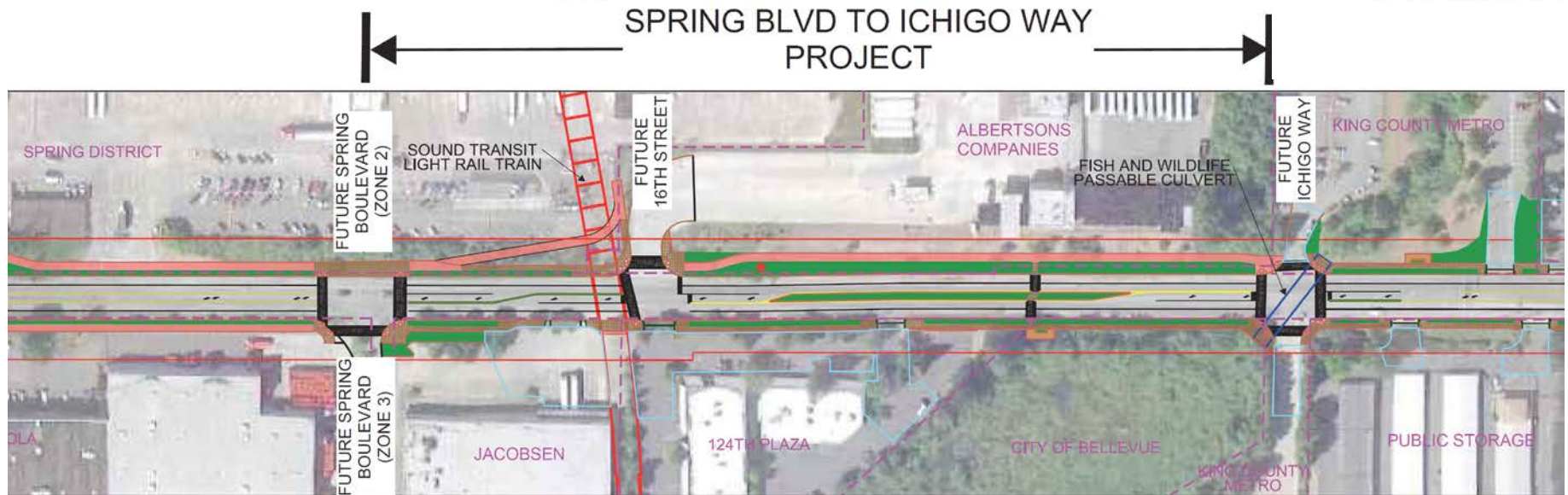
- Notice to proceed/started construction Aug 22, 2016
- Expected completion date Early 2018

Teledesic Demolition

- Bid award May 16, 2016
- Notice to proceed/started construction June 2, 2016
- Completion date August 8, 2016

Coordinated Projects

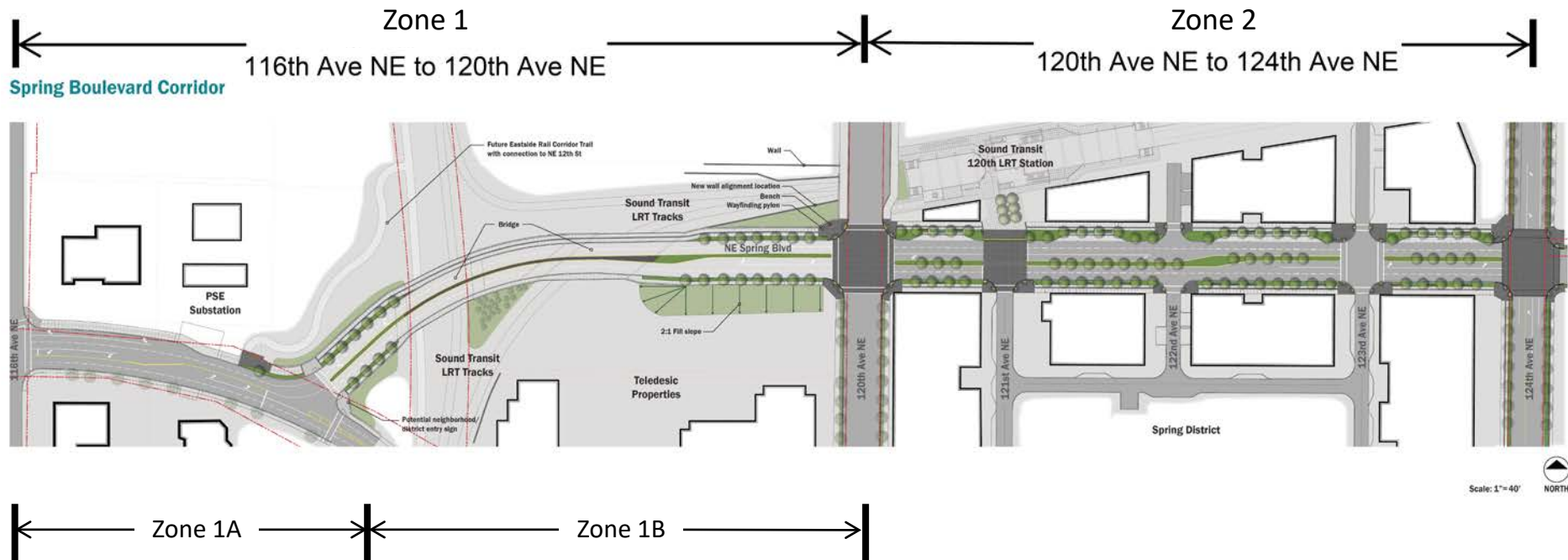
124th Avenue NE



Spring to Ichigo

- Final design complete
- Working on securing property rights
- Expected to start construction mid 2017
- Complete Construction late 2018

Coordinated Projects Spring Blvd (Zone 1B)



Zone 1B

- Notice to proceed/started construction Aug 29, 2016
- Expected completion date Late Summer 2017

Schedule 74

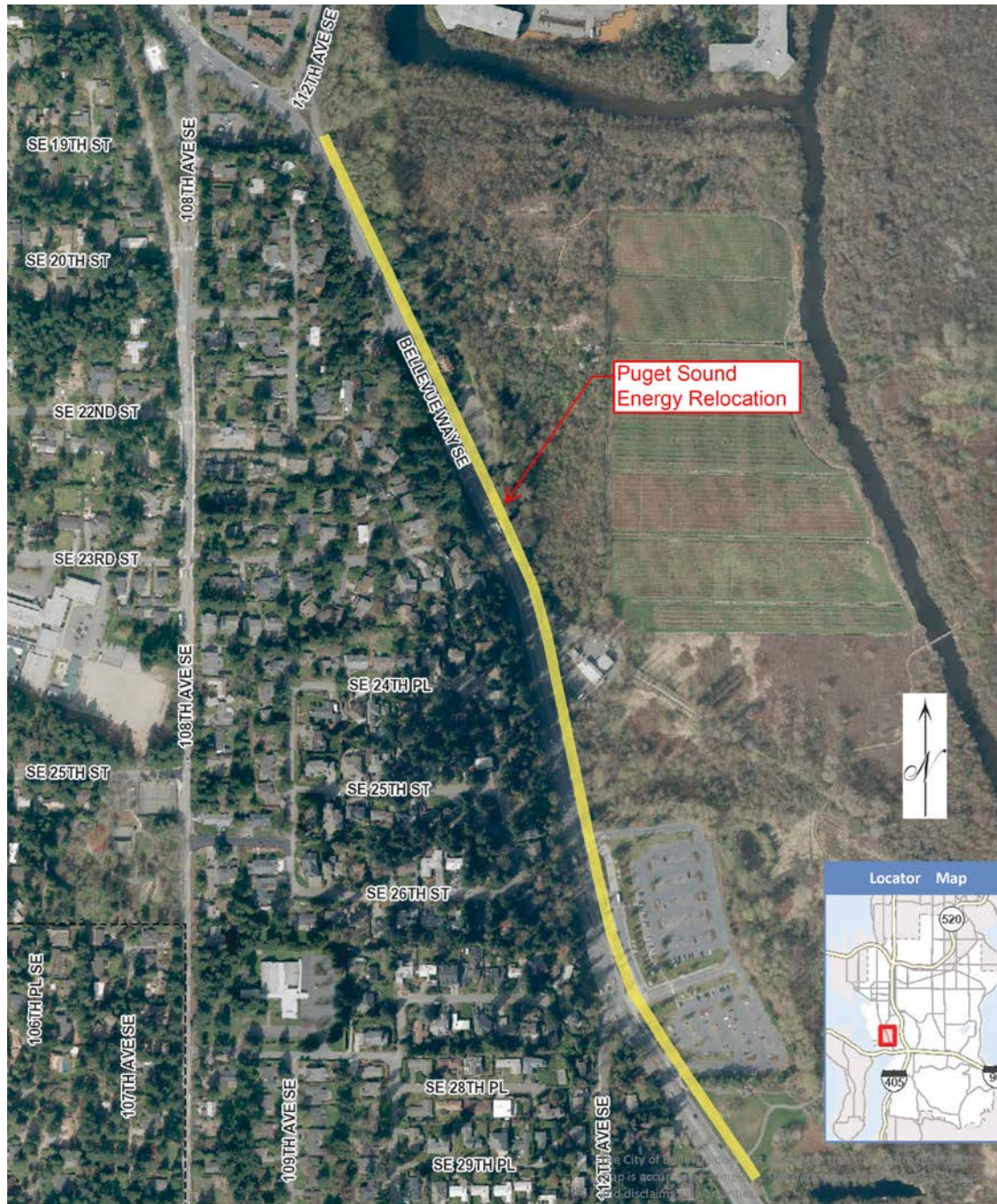
East Link – South Bellevue Segment

- Schedule 74 is the vehicle to underground PSE lines along Bellevue Way from south of the Park & Ride to the intersection of Bellevue Way and 112th Ave SE
- Per Section 21.4 of Amended MOU, ST will reimburse the City for actual costs incurred for the relocation.

124th Avenue NE

- Undergrounding PSE lines along 124th Ave NE from north of NE Spring Blvd to just north of Ichigo Way

Schedule 74 Bellevue Way SE (East Link)



Schedule 74

124th Ave NE

(East Link
Coordinated Project)



Neighborhood Traffic Mitigation Committee (NTMC)

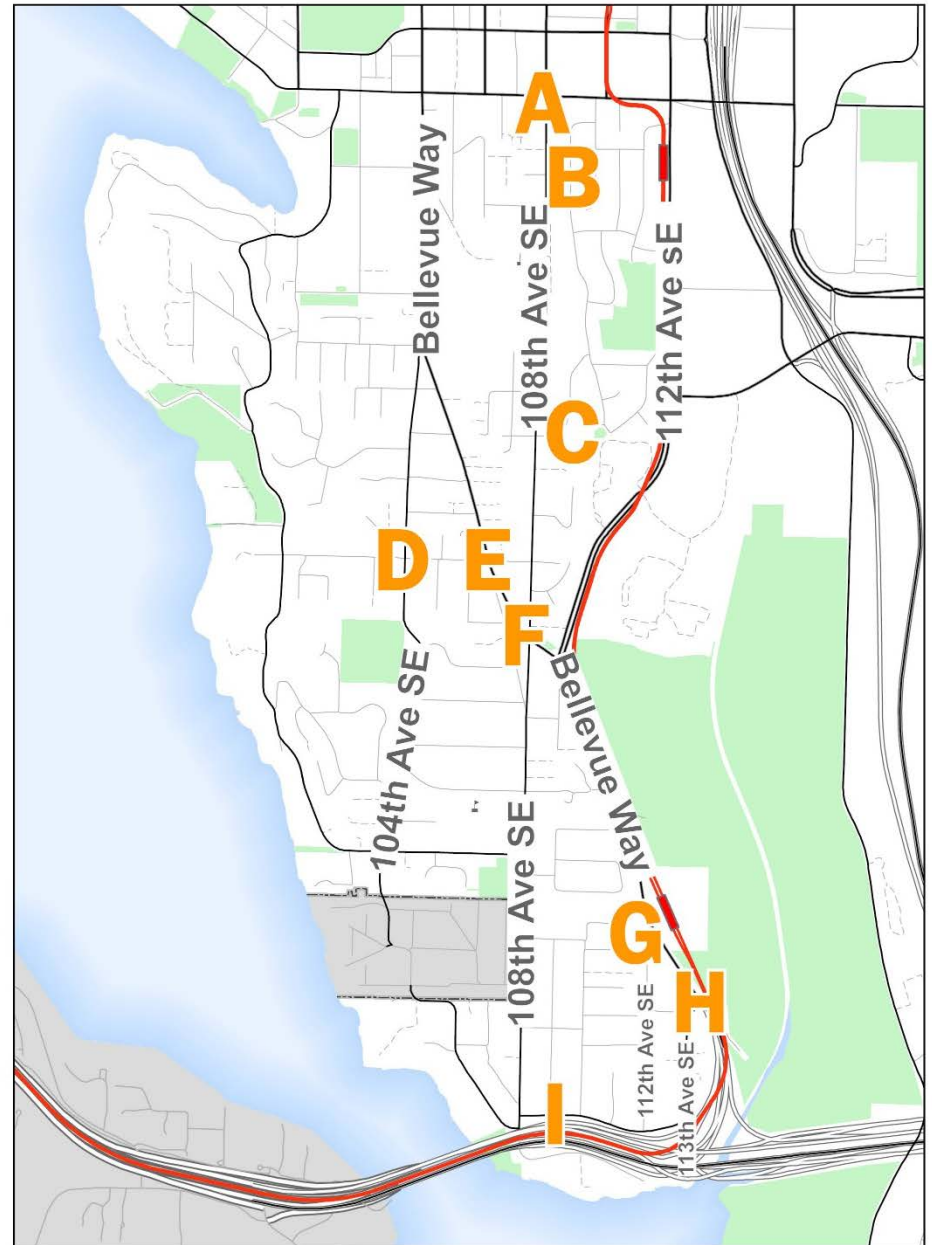
- Work called for in MOU
- Concern about construction on Bellevue Way and 112th negatively impacting neighborhood streets
- Based on existing Neighborhood Traffic Safety Services (NTSS) model
- 2-year Council priority

Neighborhood Traffic Mitigation Committee (NTMC)

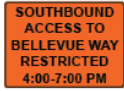
- Public kick-off: April 27 (~40 people attended)
- 4 subsequent meetings with committee (11 representatives from Enatai, Bellecrest, Surrey Downs, and Beaux Arts Village)
- Have developed draft concept plan
- Plan being shared with community

Draft Concept Plan

- Time-based turn restrictions at key intersections
 - Limits ability of people commuting to use neighborhood streets to access freeway
 - Tradeoff: residents too will need to abide by restrictions
- Coordinating with Police enforcement



Plan Features



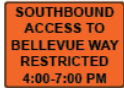
A: Sign stating southbound access to Bvue Way restricted 4-7 pm



B: Residential area sign



C: Residential area sign



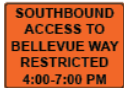
D: Sign stating southbound access to Bvue Way restricted 4-7 pm



E: 4-7 pm left turn restriction from SE 16th St to Bvue Way; 7-9 am right turn restriction from Bvue Way to SE 16th St



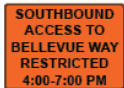
F: 4-7 pm left turn restriction from 108th Ave SE to Bvue Way; 7-9 am right turn restriction from Bvue Way to 108th Ave SE; Sign stating southbound access to Bvue Way restricted 4-7 pm



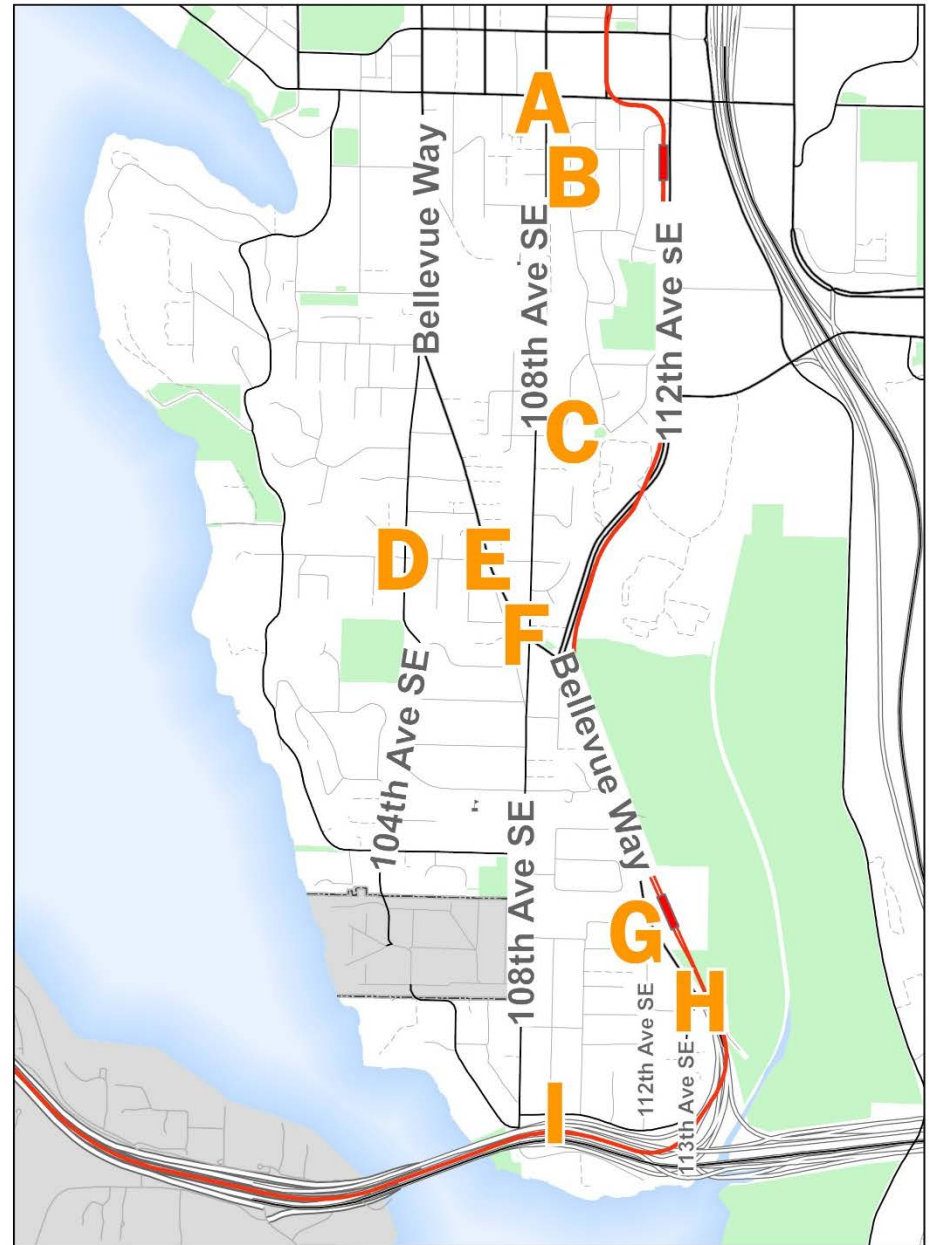
G: no right turn 4-7 pm to Bvue Way



H: no right turn 4-7 pm to Bvue Way



I: Sign stating southbound access to Bvue Way restricted 4-7 pm



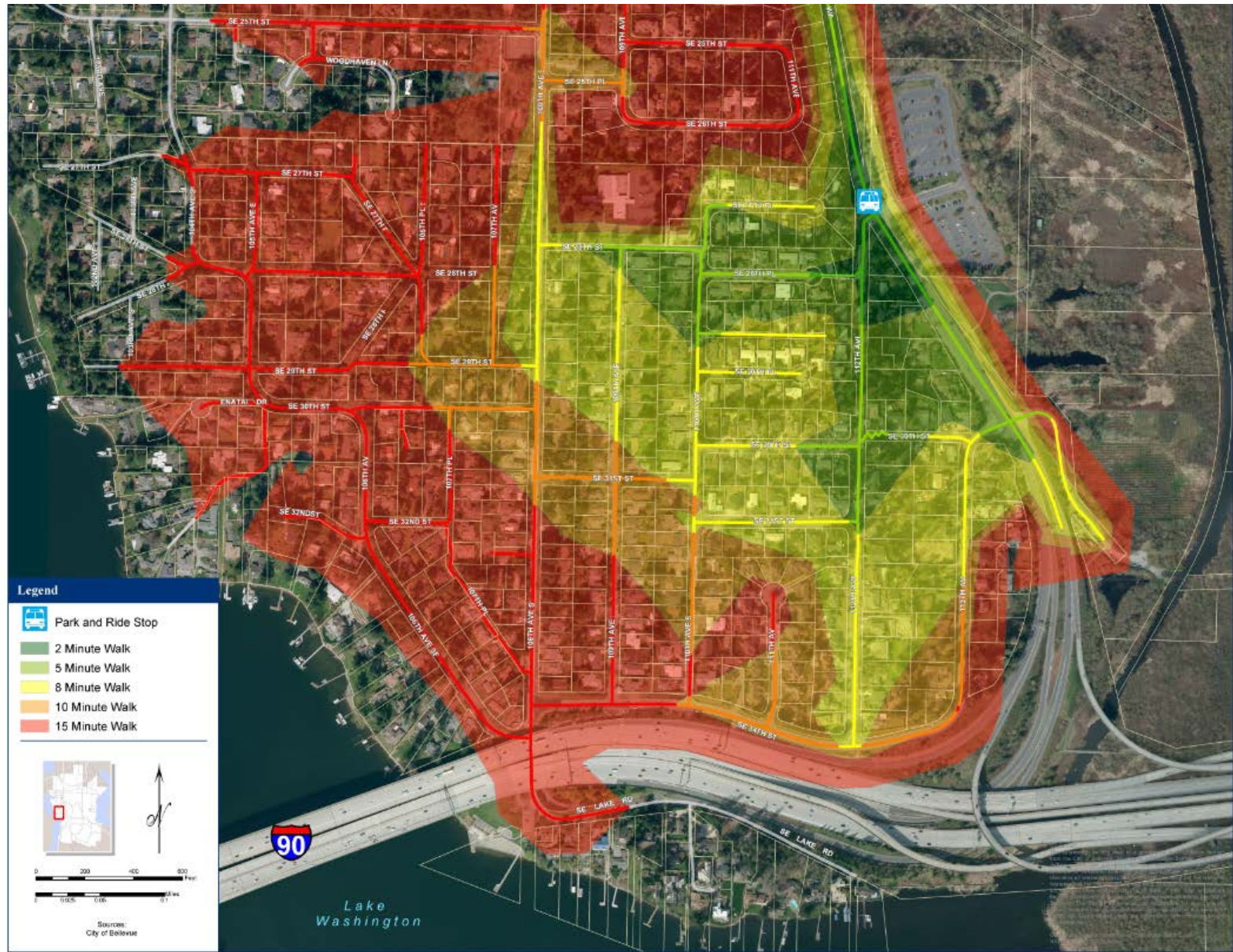
Outreach

- Starting now
- Newsletter to wider community
- Online survey to generate feedback
- Neighborhood association meetings
- Finalize plan end of October with Committee
- Coordinate with Sound Transit to implement when construction begins

South Bellevue P&R Spillover Parking

- South Bellevue P&R has 500+ stalls
- Will close as early as November
- Existing concern that spillover parking will occur in Enatai
- Residential parking zone (RPZ) one way to prevent spillover

Walk time to Bellevue Way temporary bus stop*



**potential RPZ may not follow same outline*

Expedited RPZ Implementation

- Normal RPZ implementation:
 - Spillover parking occurs THEN
 - RPZ restrictions supported by neighborhood THEN
 - Supported by Council
- Ordinance RPZ *prior* to problem occurring and neighborhood support
 - Reduces administrative/scheduling delays (at least 2 months)
 - Will still ensure restrictions are warranted and supported by the community

Council direction sought for early introduction of RPZ ordinance

Draft Public Relations Plan

- MOU provisions
 - Sect. 23.2/Outreach
 - “Open for Business” campaign to complement Sound Transit’s outreach efforts
- Internal, Multi-departmental Team
 - Draft plan framework (Goals, Strategies, & Key Messages)
 - Money savings
- External review
 - BDA
 - Meydenbauer Center
 - Sound Transit/Outreach (pending)
- Preliminary Budget
 - Through end of 2016

PUBLIC RELATIONS PLAN - GOALS

- Be proactive to those who live, work and visit Bellevue while East Link light rail is being built.
- Coordinate communications within the City and with community partners.
- Build and sustain trust with residents, businesses, visitors, and commuters.
- Provide up-to-date and real time information in various forms.
- Promote Bellevue to strengthen its vibrant economy.
- Encourage various transportation options to reach the City.

PUBLIC RELATIONS PLAN – KEY MESSAGES



PUBLIC RELATIONS PLAN - STRATEGIES

- Develop Key Messages
- Identify target audiences (internal & external)
- Identify resources and budget
- Sustain community relations
- Advertise through multi-media
- Offer transportation incentives
- Evaluate effectiveness

2016 PROPOSED EXPENSES

- Business Outreach (\$1,000)
 - Joint planning with Sound Transit
- City-wide mailer (\$10-15,000)
 - Overview of East Link + resources
- Advertising (\$3-5,000)
 - Print/digital paid advertising
 - Communicate key messages
- Graphic design support (\$3-5,000)
 - Dedicated graphic support
 - Requires immediate turnaround
 - Create templates

**2016 Proposed
Expenditures =
\$17,00- 26,000**

PUBLIC RELATIONS PLAN – TASKS FOR 2016

- Complete writing the plan (Sept./Oct.)
- It's Your City Newsletter (Oct.)
 - South Bellevue Segment/Park and Ride Closure + Resources
- On-line East Link communications survey (Oct./Nov.)
 - How do you currently receive information about East Link construction?
 - How do you prefer to receive information about East Link construction?
- Hold kick-off Community Partners Meeting (Nov.)
 - Begin to identify communications; roles and responsibilities
 - Identify upcoming projects, events, activities (1st Qtr 2017)

Questions?