



City of Bellevue

Bellevue Smart Connectivity Update

Sabra Schneider | IT Department

Chelo Picardal | IT Department

June 24, 2019





Direction Needed from Council

For information only

AGENDA: Connectivity Element Update



Background



Wi-Fi



Small Cell Wireless

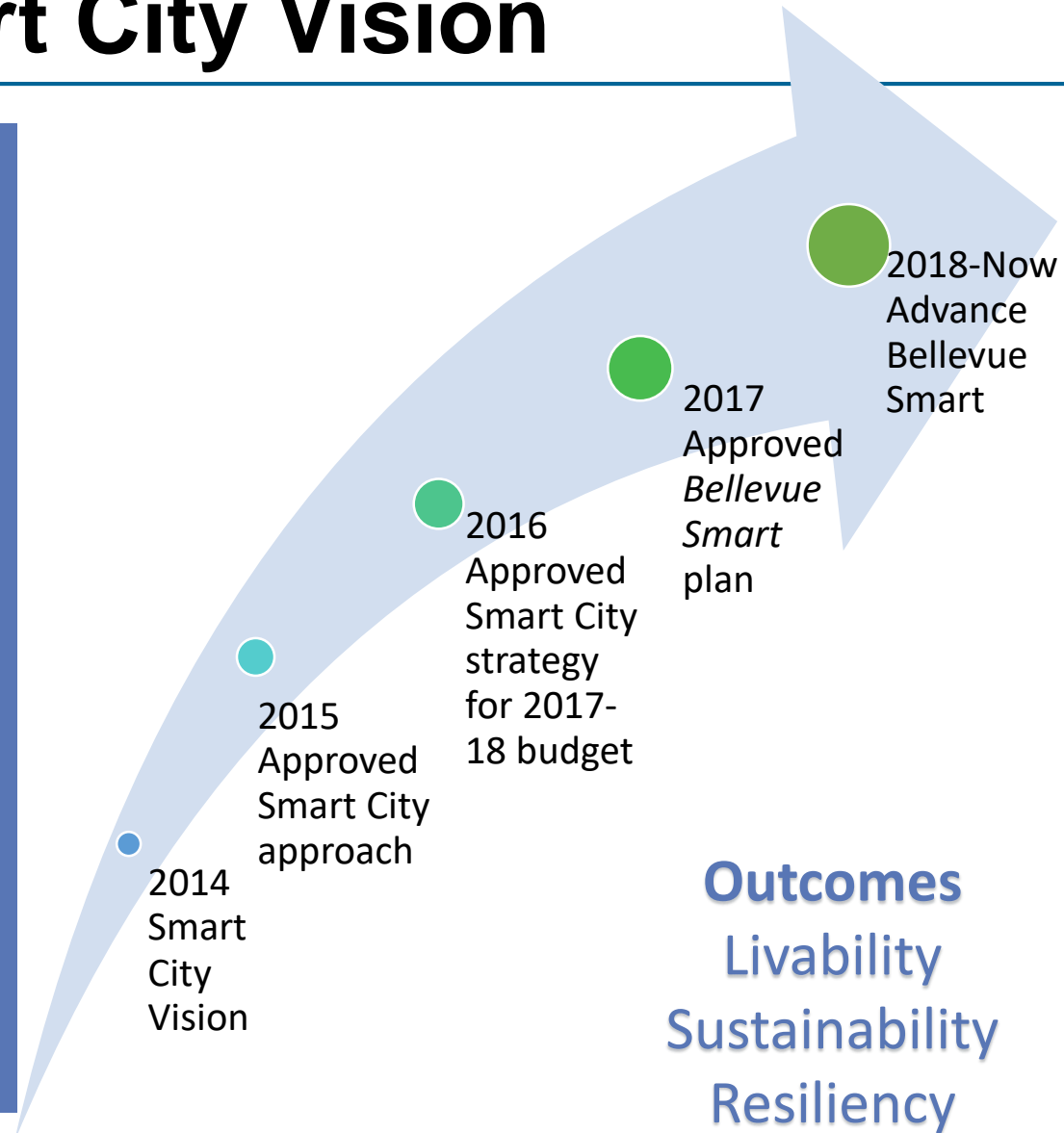


Regional Partnerships

Bellevue Smart City Vision

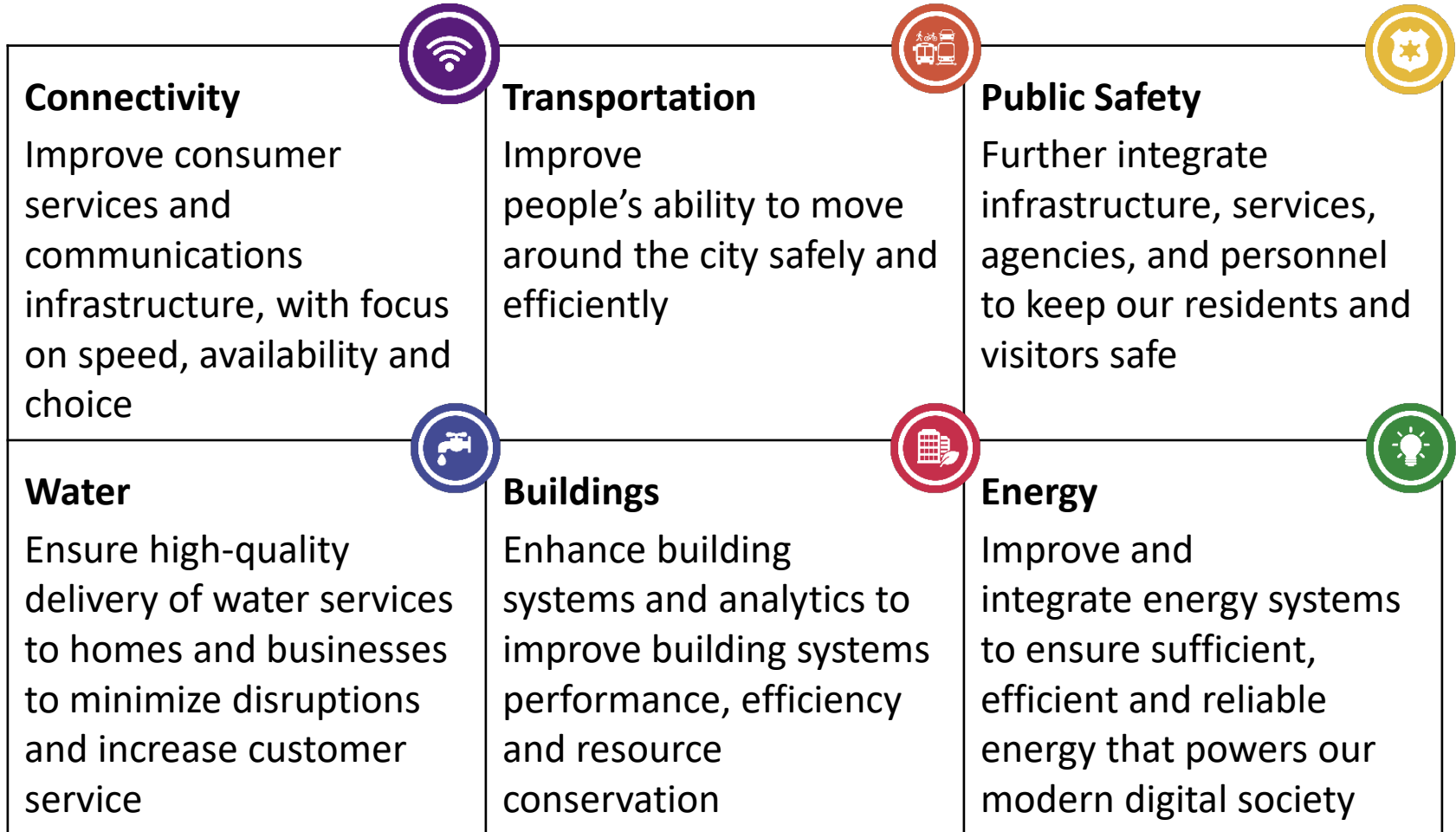
Council Vision

Bellevue is a “smart city” with a clean, high-quality environment and excellent and reliable infrastructure that supports our vibrant and growing city, including high-tech connectivity.



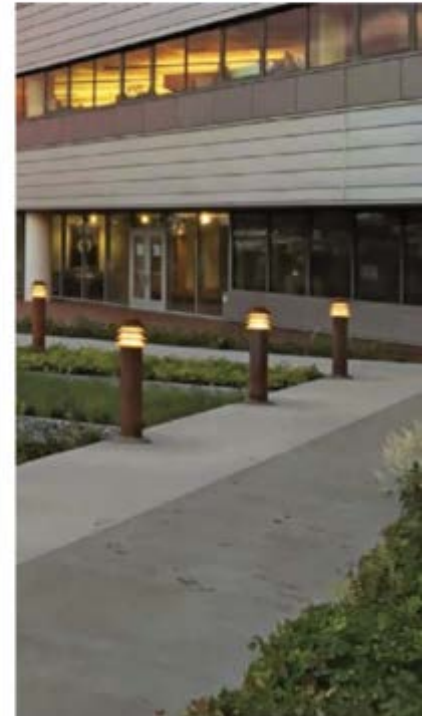
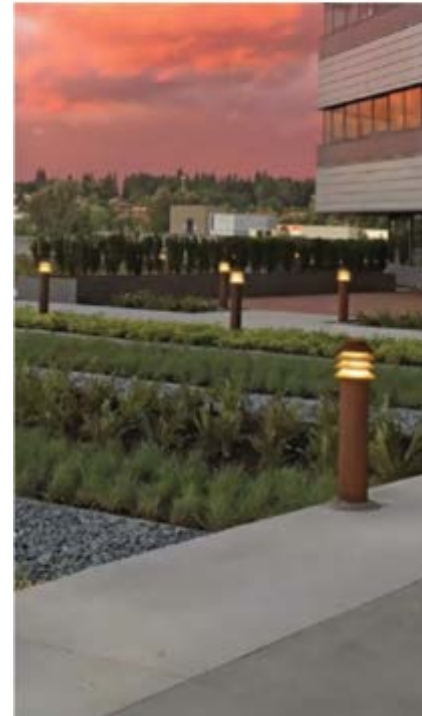
Smart City Elements

Projects are embedded across multiple departments, workplans and initiatives.



Smart City Principle Strategies

1. Focus on proactive and adaptive
2. Drive with data
3. Pursue partnerships
4. Leverage regional relationships



Wi-Fi: Highland Village

- Addressing digital equity gap
- 76 units of affordable housing in 12 buildings
- Second King County Housing Authority property in Bellevue to get Wi-Fi
- Leverages Transportation's fiber network infrastructure on NE 8th St

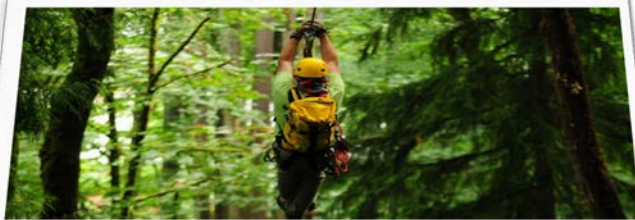


Expanding Wi-Fi in Parks

More BellevueConnect Wi-Fi
Added to Parks:

- Surrey Downs Park Great Lawn and Sport Court
- South Bellevue Community Center Challenge Course and Zip Tour

Wi-Fi already available in Community Centers, Downtown, Crossroads, Botanical Garden, Lewis Creek Park, Highland Park, Bellevue Youth Theater, Kelsey Creek Farm



- Council actions in Jan and Mar
- Master License Agreements Signed:
 - AT&T
 - Verizon Wireless
 - Crown Castle (T-Mobile, Sprint)

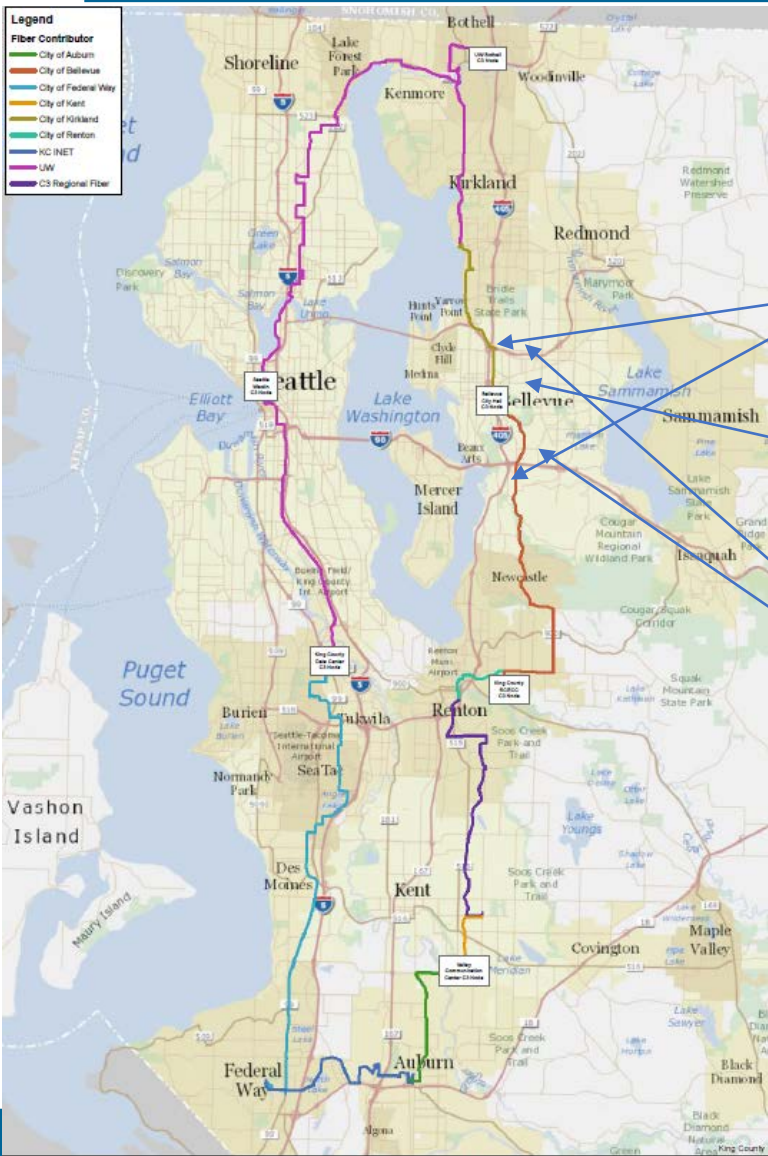
- [illegible]



Partnerships: Community Connectivity Consortium (C3)



Regional Partnerships in Bellevue



Next Steps and Discussion

- Bellevue Smart Plan update by end of 2019
- Smart Water Meter pilot begins in Fall



Direction Needed from Council

For information only