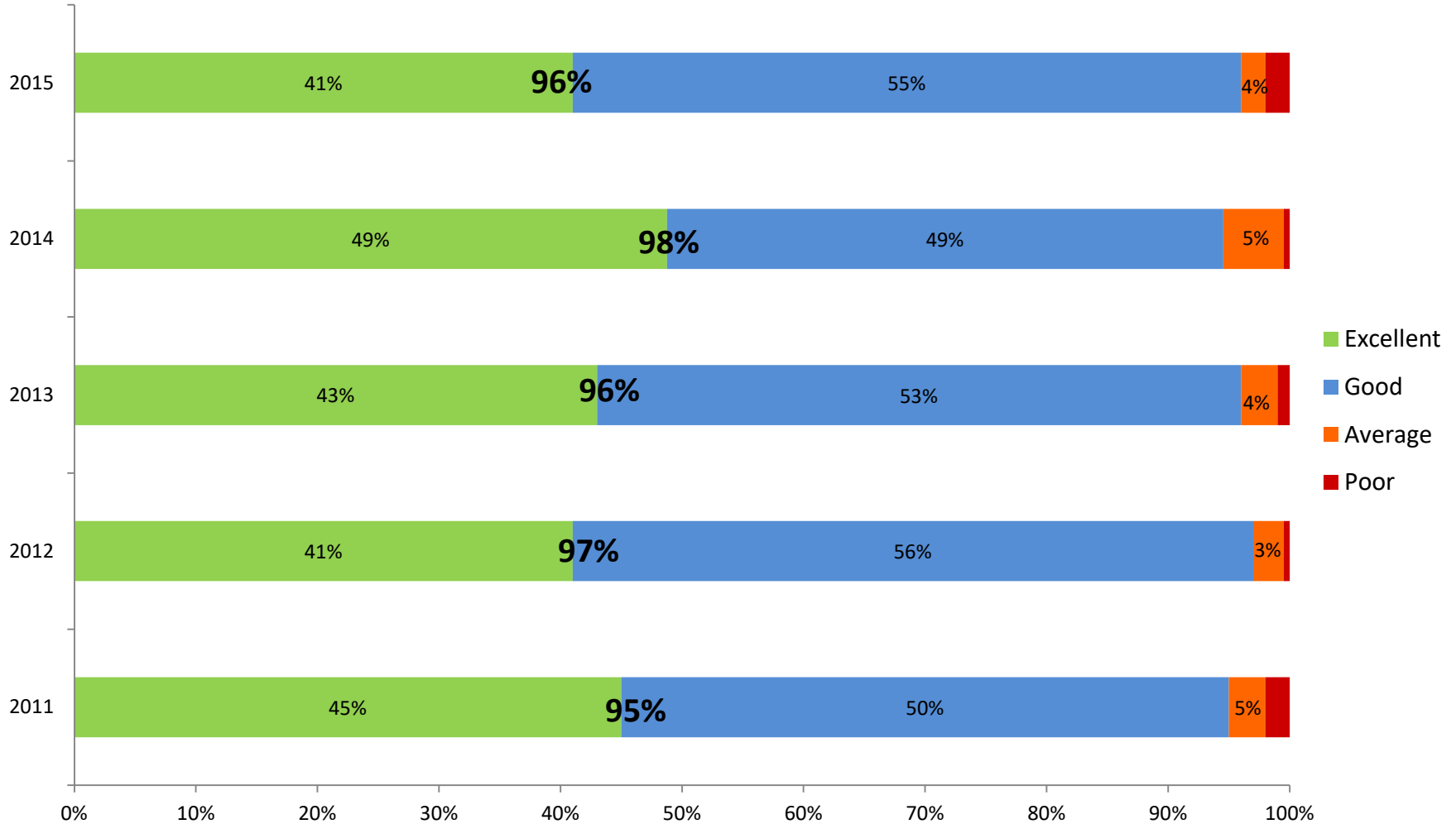


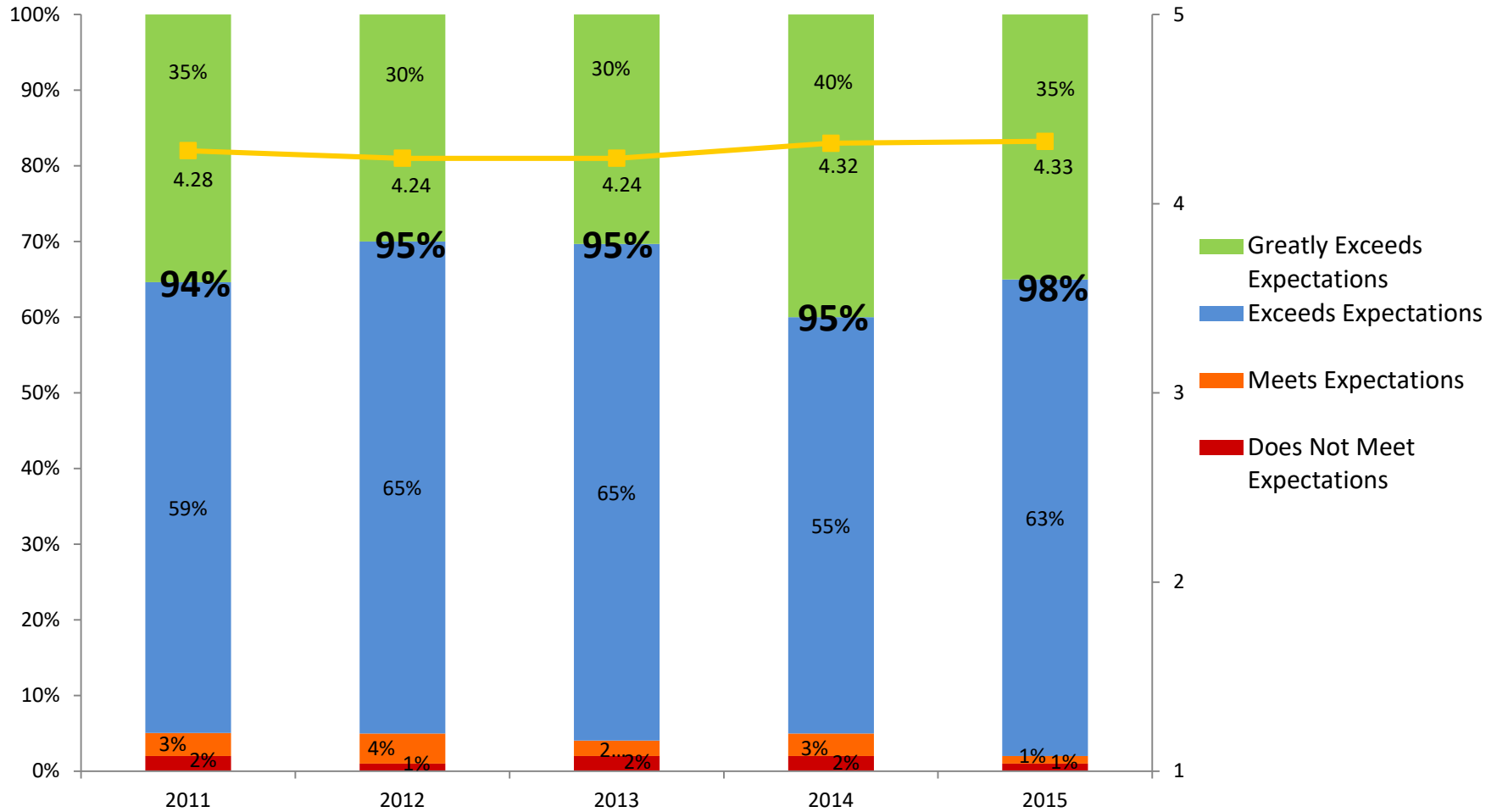
2015 Performance Survey **Topline Results**

April 6, 2015

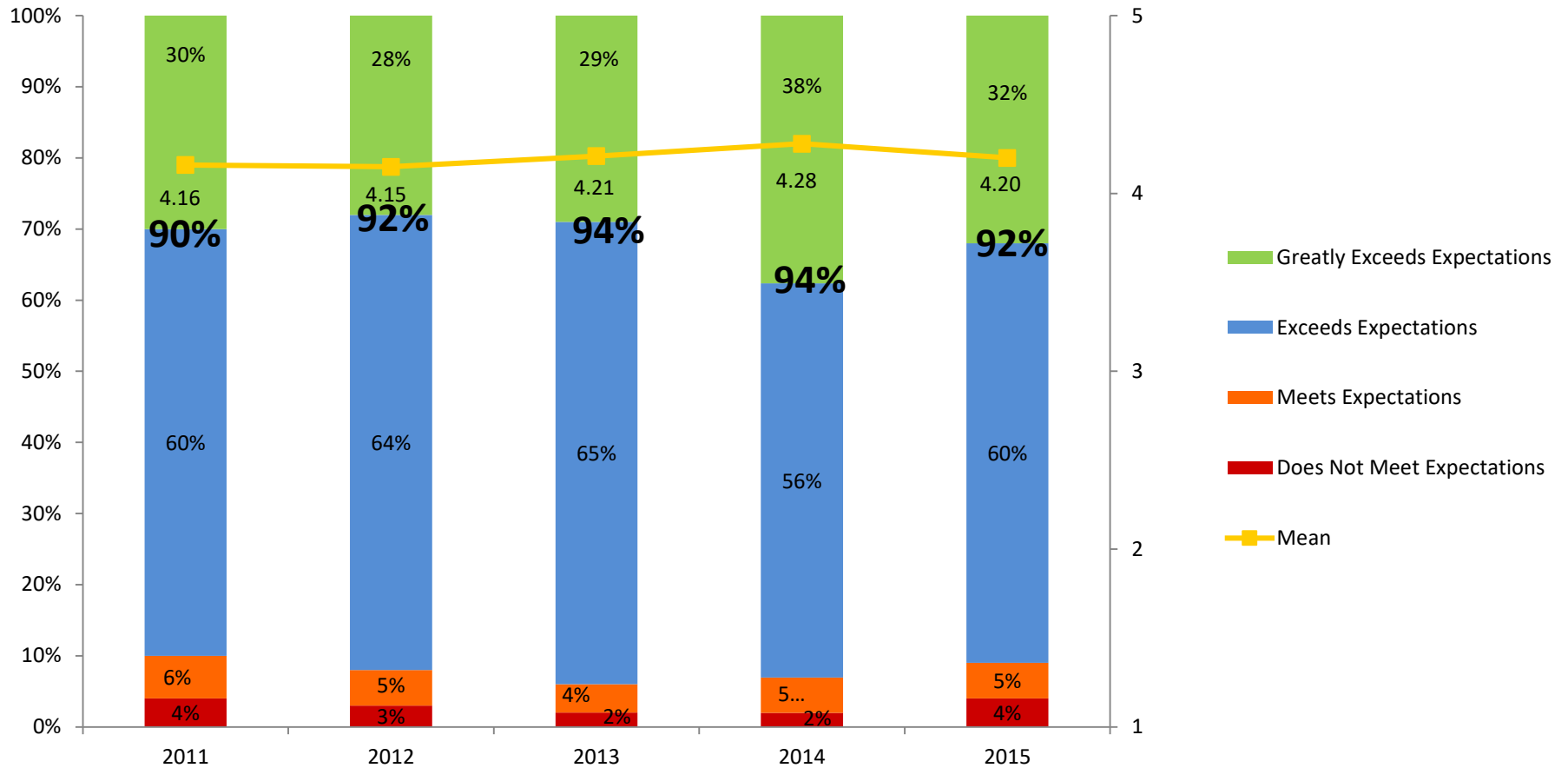
Perceptions of Bellevue as a Place to Live



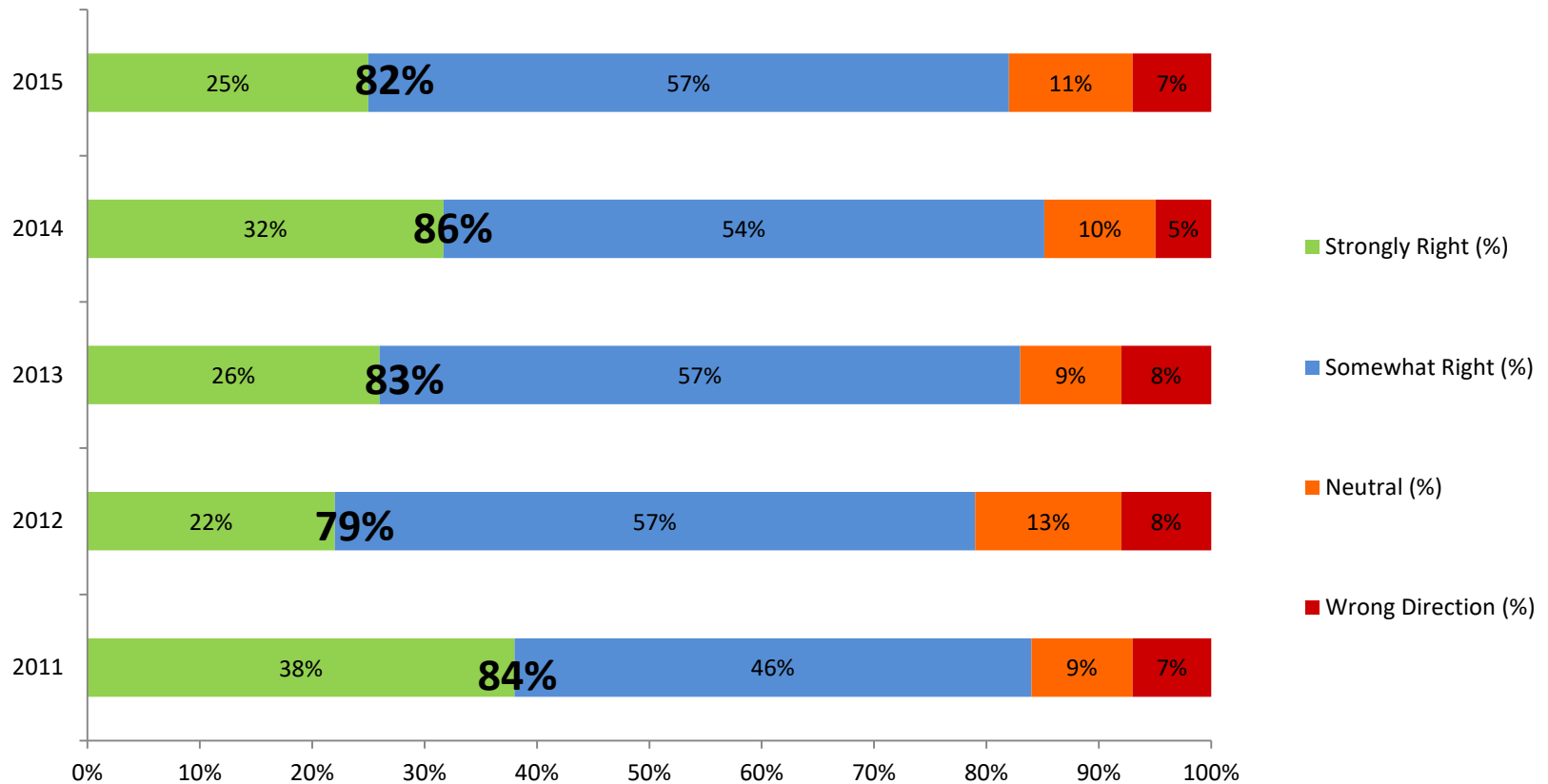
Overall Quality of Life



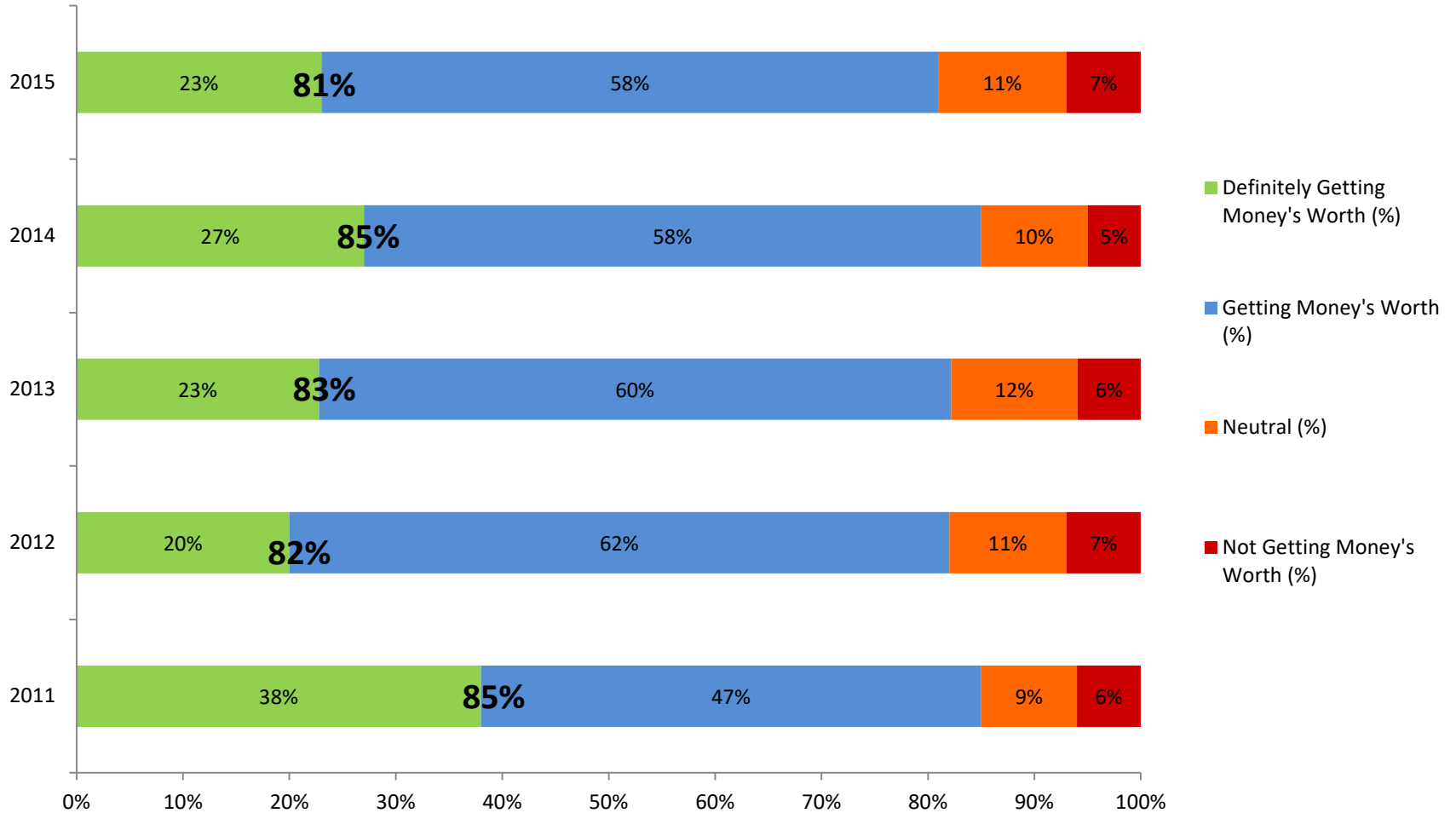
Overall Quality of City Services



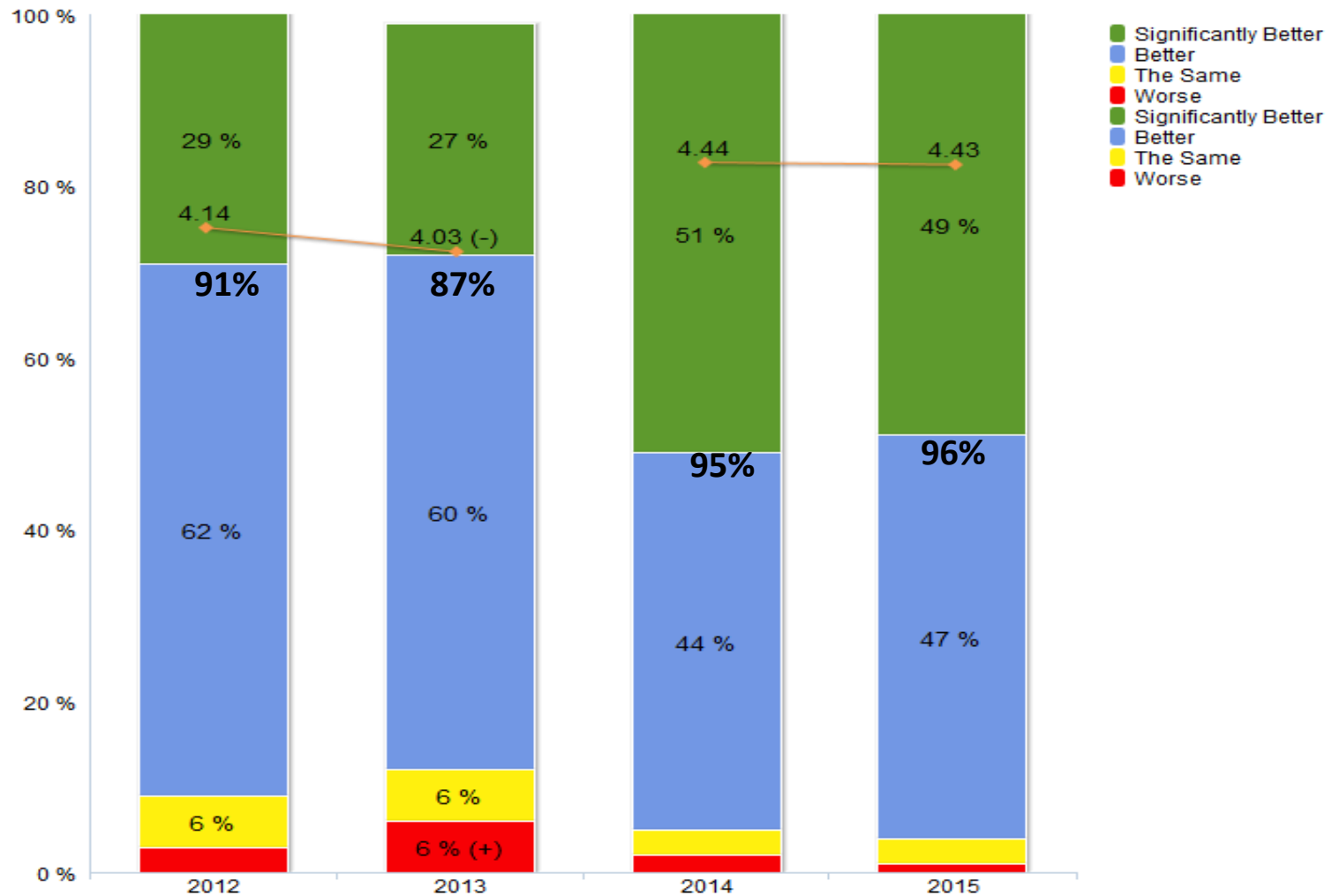
Direction City is Headed



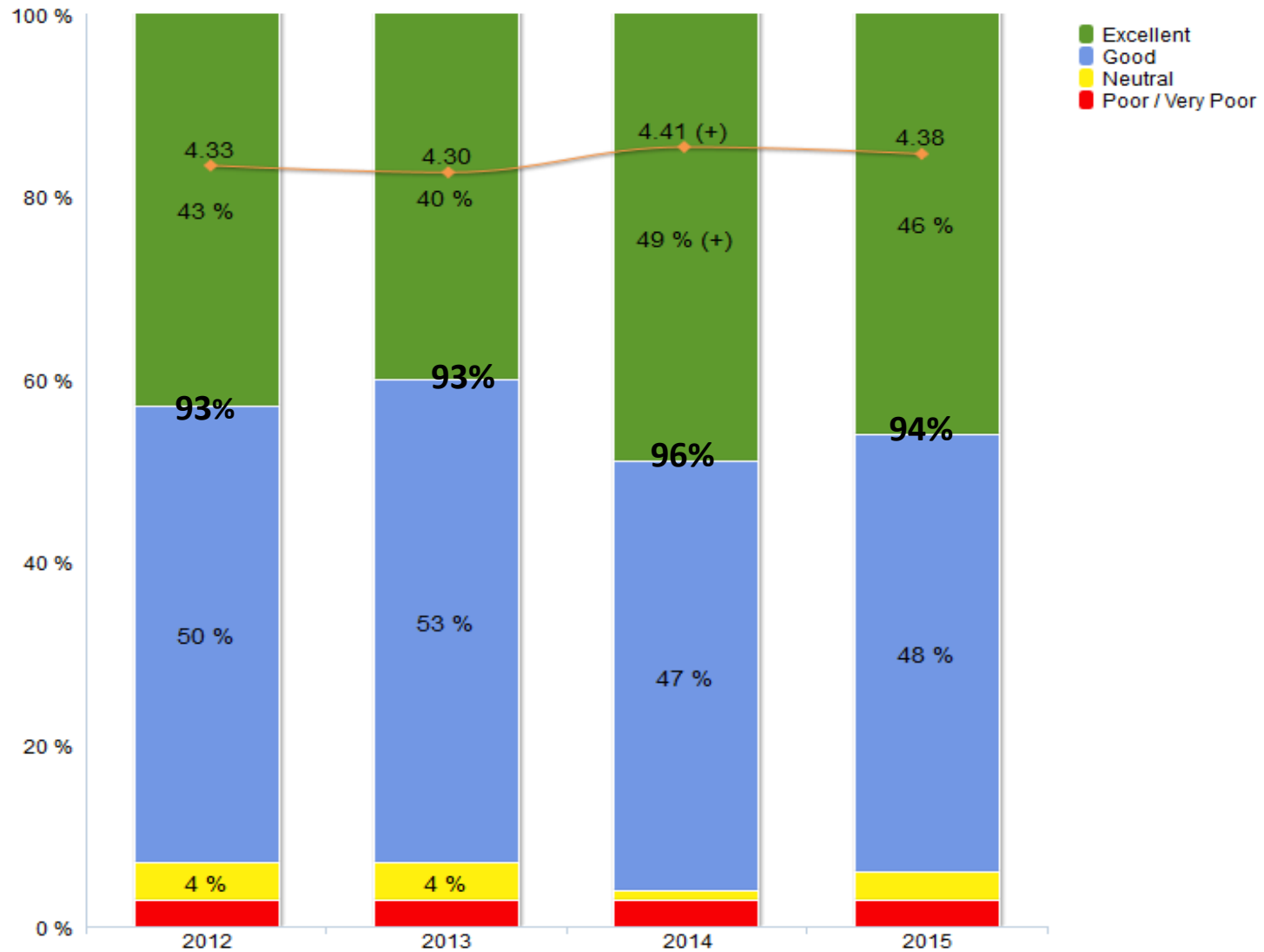
Value of Services for Tax Dollars Paid



Comparability to other Communities



Perceptions of Bellevue Neighborhoods as a Place to Live



Questions