



FORMINGour**FUTURE**

COMPREHENSIVE PLAN UPDATE

Bellevue City Council
April 20, 2015

Tonight's Meeting

- Begin element-by-element review of draft Comprehensive Plan
 - Neighborhoods
 - Economic Development
 - Parks, Recreation and Open Space
 - Urban Design & the Arts
- First in a series of these sessions, trying to strike the right balance in level of detail for presentations
- Council feedback tonight will be incorporated prior to mid-June adoption

Tentative Review Schedule

April 6

Plng Commission
recommendation
presented by
board &
commission chairs

April 20

Neighborhoods
Economic
Development
Parks,
Recreation
and Open
Space
Urban Design
and the Arts

April 27

Community
Engagement
Land Use
Transportation
Housing

May 11

Utilities
Capital Facilities
Human Services
Environment

June 1

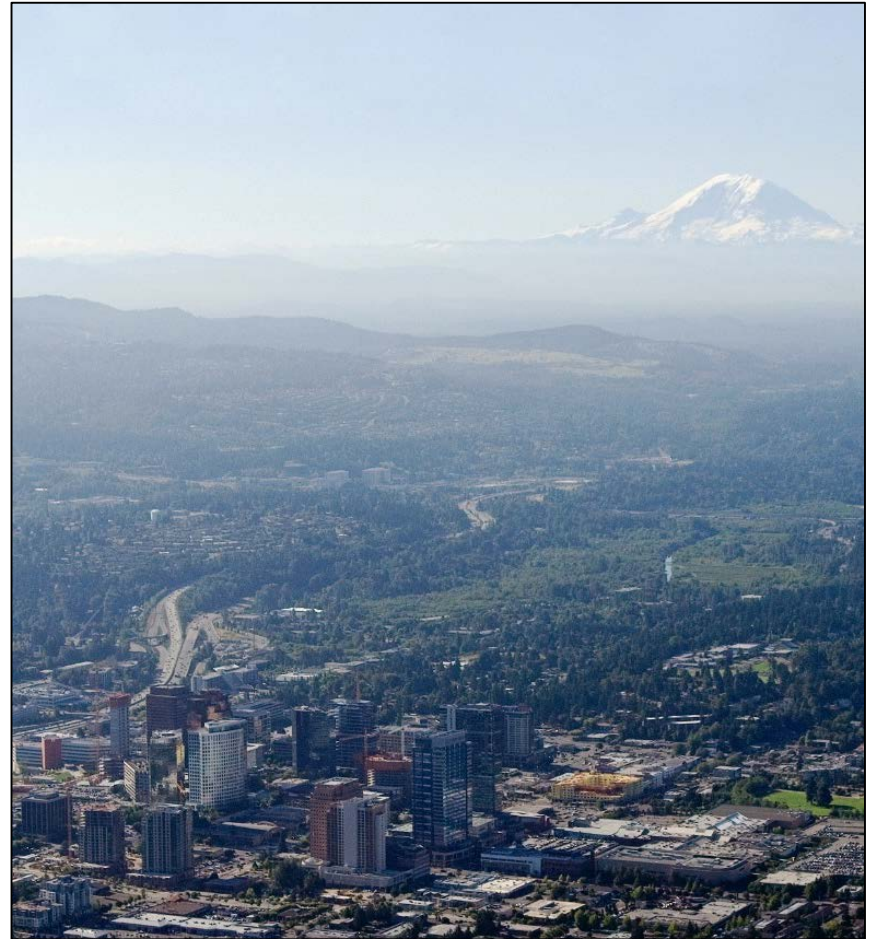
Integration of
annual
amendments;
Final review
topics as
needed

June 15

Target for
Council action

Key Objectives of Plan Update

- Reflect local values and priorities while meeting mandated requirements
- Address long-term needs of the community, economy and environment
- Strengthen the policy foundation for City decisions, investments and actions
- Make the plan more accessible and usable so that it remains an effective tool



Element Review

- Questions to consider for each element:
 - Any questions about what is recommended for change?
 - Any additional information needed on this topic?
 - Any gaps or concerns to follow up on?

Neighborhoods Vision

BELLEVUE IS A COMMUNITY OF DIVERSE AND VIBRANT NEIGHBORHOODS.

Bellevue residents live in a variety of distinctive, safe and attractive neighborhoods that provide amenities and opportunities for a high quality of life. The strong connections among neighbors contribute to these qualities and the ability of neighborhoods to respond to change.



Neighborhoods

- New Element dedicated to neighborhoods
 - Recognizes that Bellevue is a city of neighborhoods
 - Neighborhood policies found throughout Plan; this Element provides added emphasis
- Subsections on:
 - Core Needs – Including new policies on public safety
 - Adaptability – Supporting neighborhoods' ability to respond to change
 - Neighborhood Character
 - Neighborhood Area Planning – Frames how neighborhood plans are updated and relate to overall Comprehensive Plan

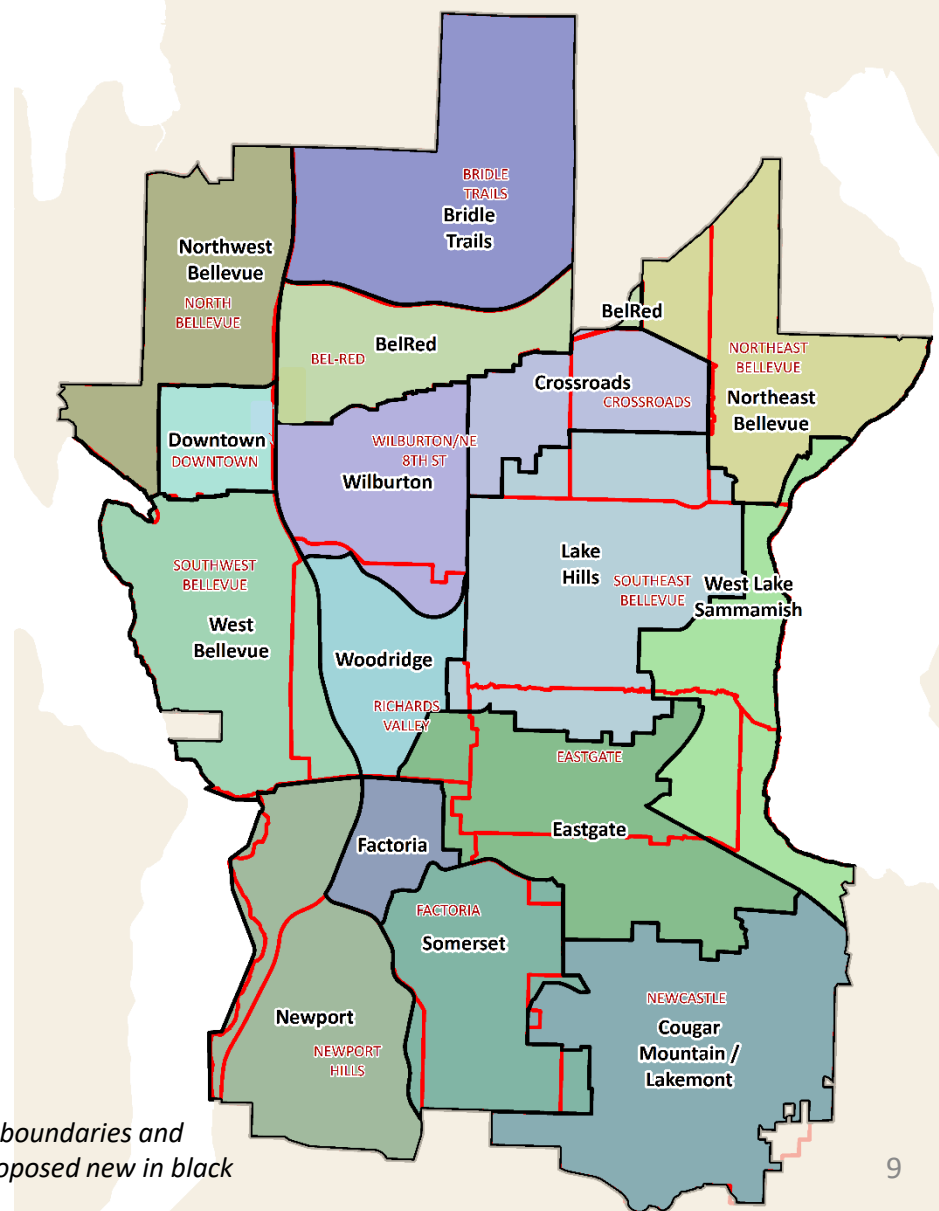


Neighborhoods



Recommended New Subarea Boundaries

- Updated neighborhood area (subarea) boundaries to better reflect current neighborhood affiliations
 - Intended to be geographies recognized by neighborhood residents
 - Consistent with proposed new NEP
- New boundaries would be adopted with this Comp Plan Update; to go into effect as Subareas are updated
 - Older Subarea policies remain in effect until superseded by Subarea updates

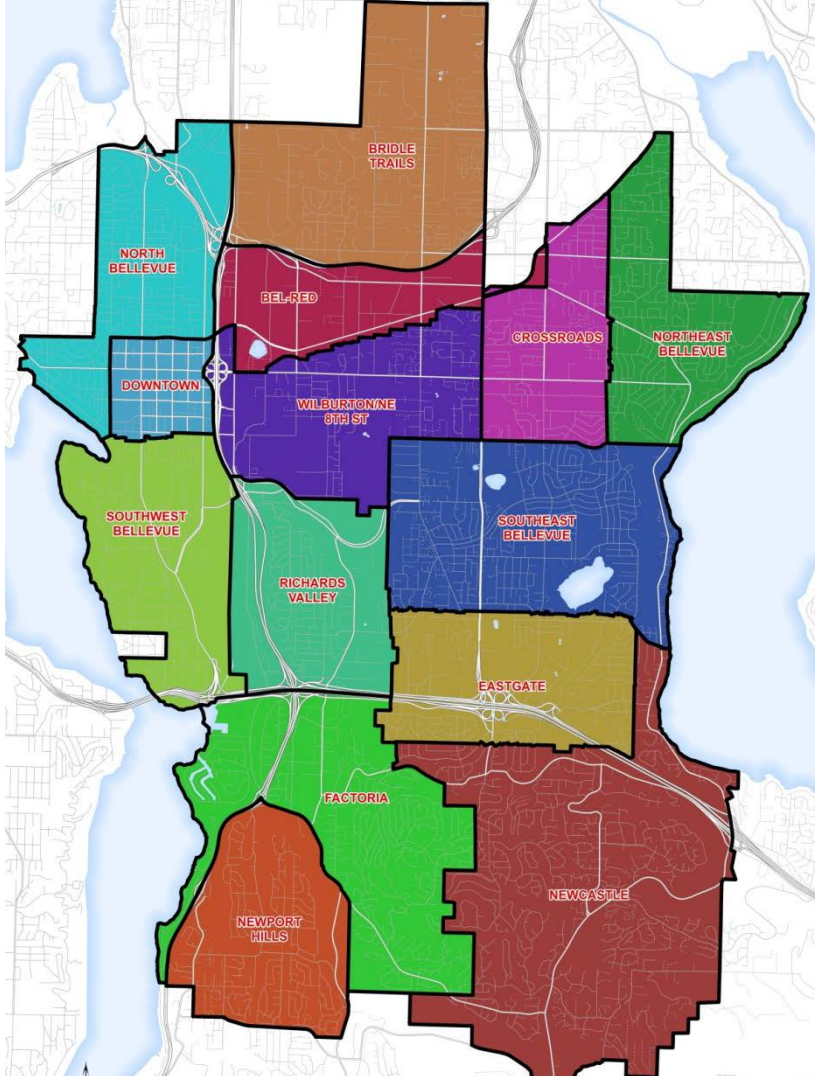


Older (existing) boundaries and labels in red, proposed new in black

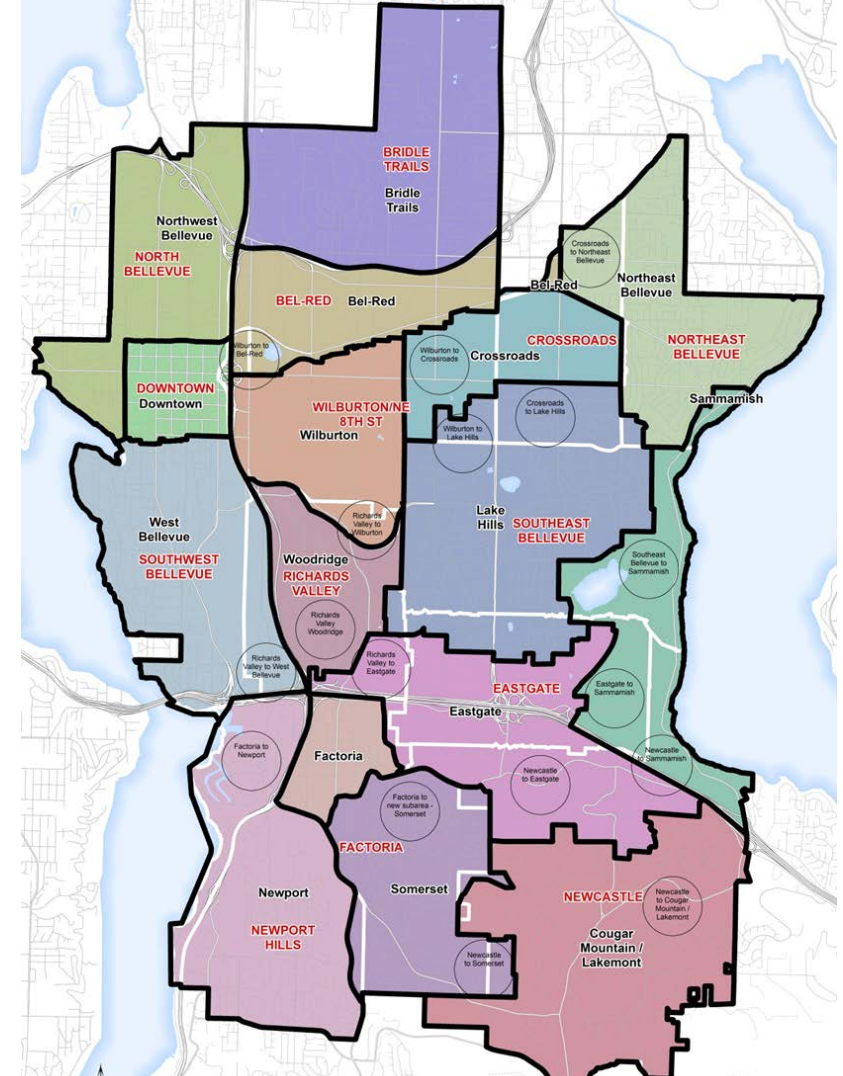
Subarea Boundaries

Existing vs. Recommended

Current subarea plan boundaries



Recommended new subarea plan boundaries



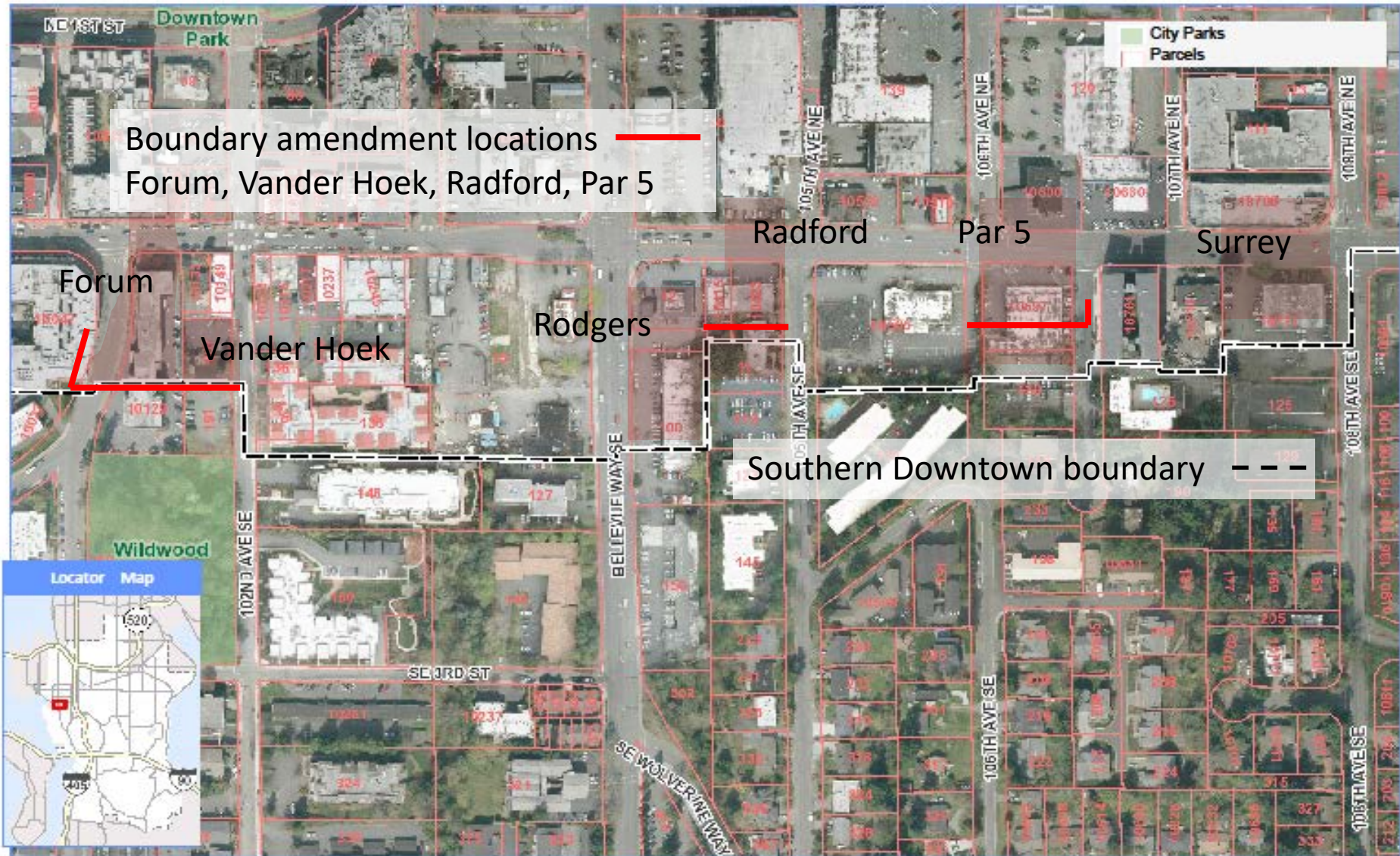
From Public Scoping Special Focus on Bel-Red Eastern Boundary

- BelRed planning process
 - BelRed boundary includes area between Bel-Red Road and 156th Avenue
- Request by community members during Comp Plan scoping
 - Change boundary to return triangle area to Crossroads
 - Restore previous zoning
- Commission explored options; ultimately not recommending a change

Special Focus on Bel-Red Eastern Boundary



From Public Scoping -- Special Focus on Downtown Southern Boundary



Southern Boundary recommendations



Neighborhoods

- Any questions about what is recommended for change?
- Any additional information needed on this topic?
- Any gaps or concerns to follow up on?

Economic Vision

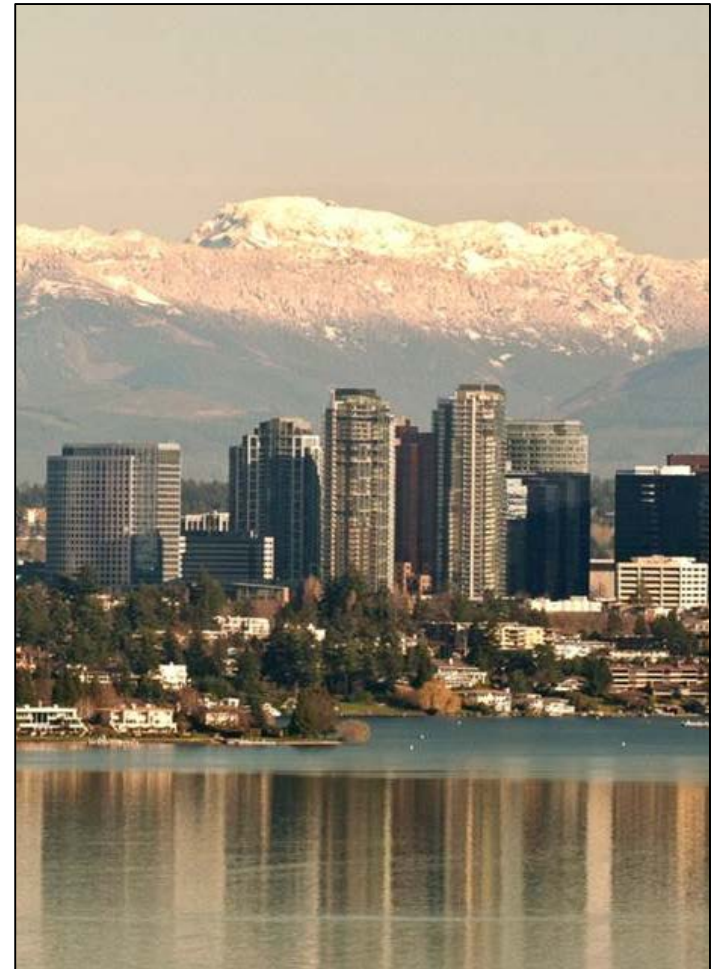
BELLEVUE IS A HUB FOR GLOBAL BUSINESS AND INNOVATION.

Its economic strength is built on the creativity, innovation, and hard work of its people. Bellevue works to attract innovative and entrepreneurial businesses, through ensuring that our neighborhoods, cultural amenities, public schools, digital infrastructure and business climate are among the nation's best.



Economic Development

- Support for a diverse and vibrant local economy, with Bellevue as a regional economic leader and gateway for international business
- Consistent with the new Economic Development Strategy Plan
- Policies organized around 5 major themes
 - Business climate
 - Community livability
 - Education
 - Planning and Infrastructure
 - Implementation



Highlights of Significant Changes

- Updated economic background; alignment with Economic Development Strategy Plan
- Added emphasis on innovation (ED-X2, ED-X9, ED-33)
- New Education section
- Emphasis on place-making (ED-28)
- Added focus on tourism (ED-X6)
- Continued connection to workforce housing

Economic Development

- Any questions about what is recommended for change?
- Any additional information needed on this topic?
- Any gaps or concerns to follow up on?

Parks, Recreation & Open Space

BELLEVUE IS A “CITY IN A PARK.”

Bellevue has a system of parks, open spaces, cultural facilities, and recreational amenities throughout the city. These provide abundant access to natural beauty and extraordinary experiences to define a lifetime of recreation and learning.



Parks, Recreation & Open Space

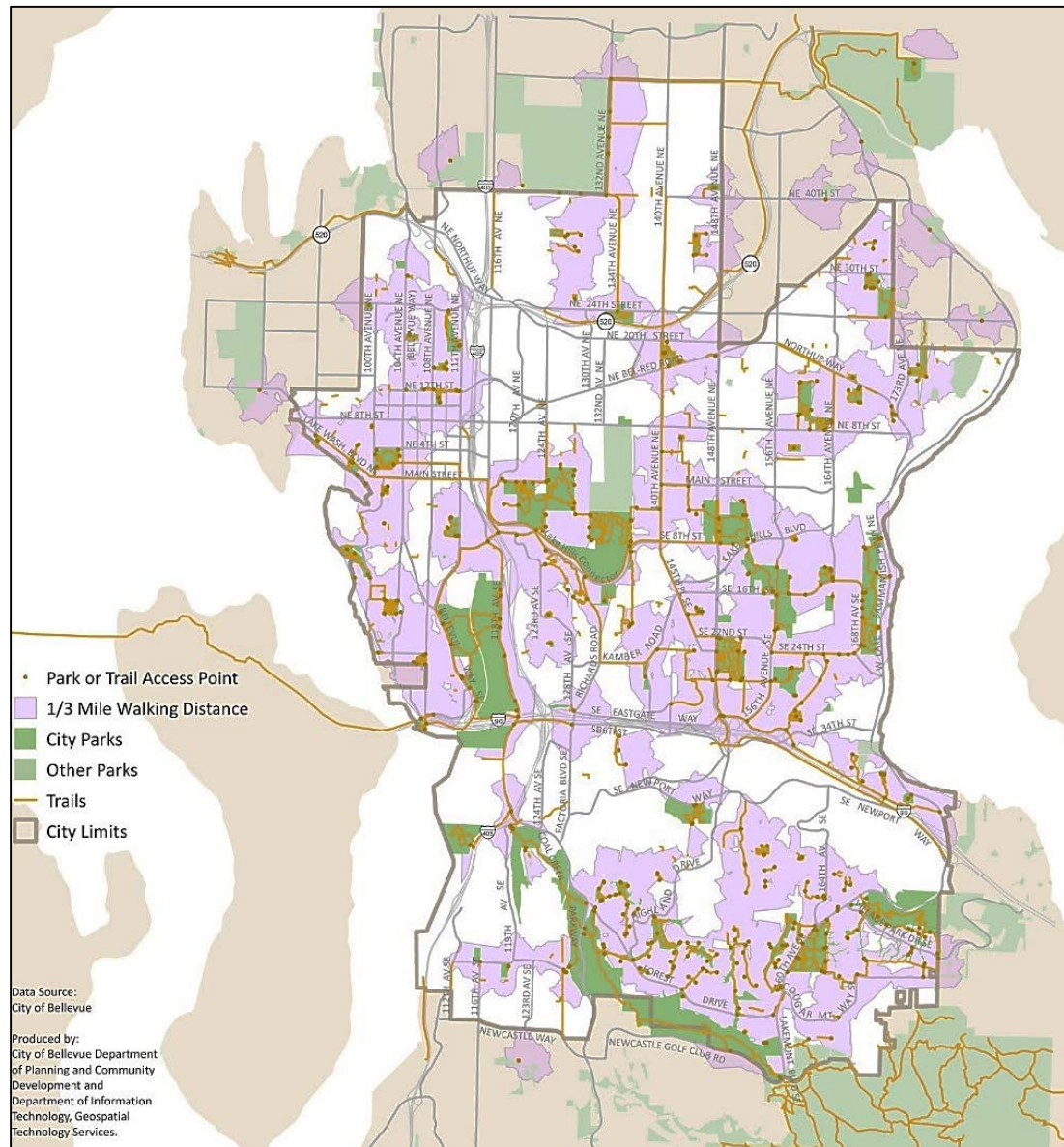
Highlights of Significant Changes

- Challenge of acquiring and developing parks within an increasingly urban environment
- Importance of parks for intercultural gathering and community building
 - See policies PA-36, PA-38
- Identified links between transportation and parks policies
 - See new Map PA-2, Walkable Park Access map; updated Greenway Connections map PA-3, with Spring Blvd., Eastside Rail Corridor, Mountains to Sound Greenway, etc.
- Better use of integrated maps to express targeted goals for greenway trails and park access to waterfront
- New policies:
 - Support for signage and wayfinding tools to direct individuals to parks
 - Use of parks to celebrate, promote and preserve local heritage
 - Monitoring community's evolving recreation and community service needs



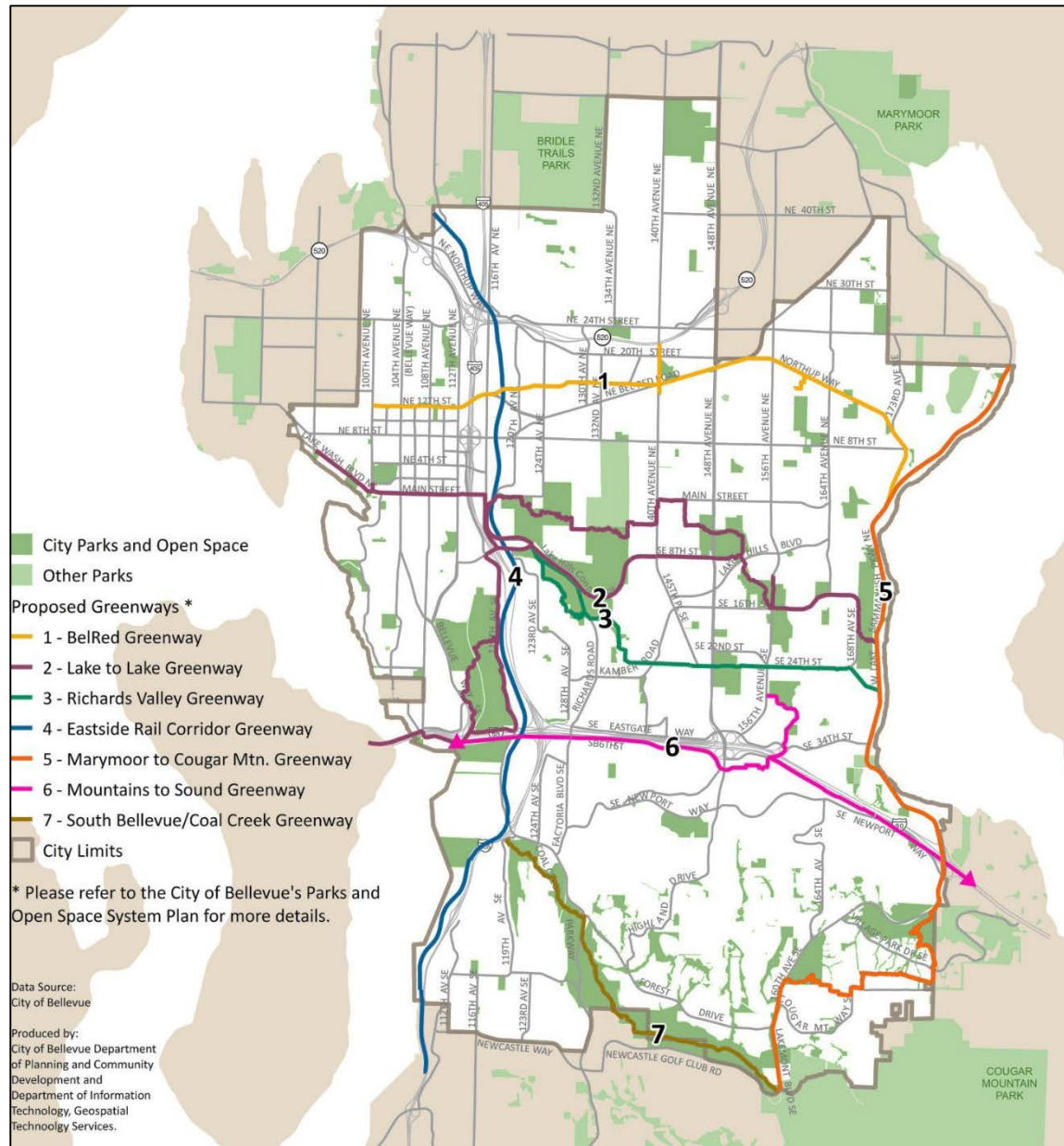
Parks, Recreation & Open Space

Map PA-2 Park Access



Parks, Recreation & Open Space

Map PA-3 Regional Park Facilities and Greenway Connections



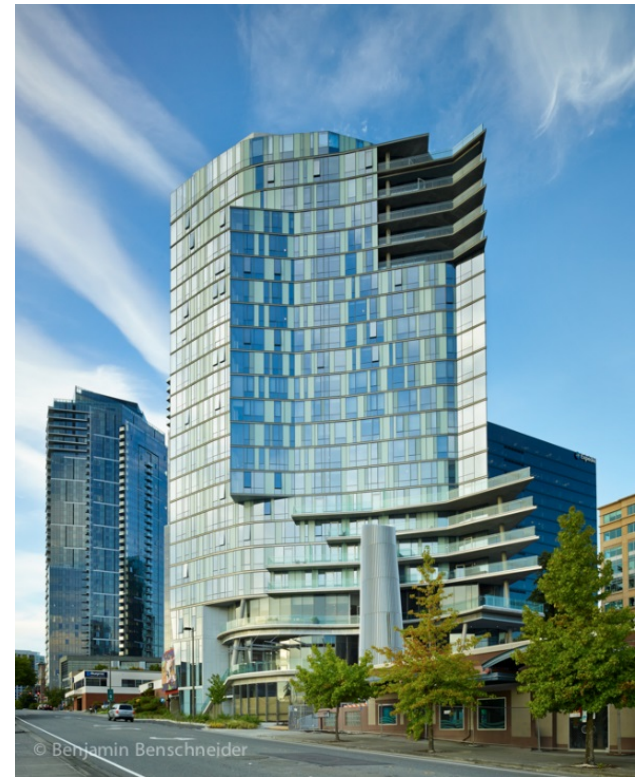
Parks, Recreation & Open Space

- Any questions about what is recommended for change?
- Any additional information needed on this topic?
- Any gaps or concerns to follow up on?

Urban Design & the Arts Vision

BELLEVUE CREATES EXTRAORDINARY PLACES FOR PEOPLE, AND EMBRACES THE ARTS AS AN INTEGRAL PART OF THE COMMUNITY.

Through keen attention to urban design, Bellevue's new buildings are contributing to the memorability, livability and character of the City and its neighborhoods. Rich expressions of arts and culture are found throughout the City; they are embraced by residents and "must see" attractions for visitors.



Urban Design & the Arts

Significant Change—Urban Boulevards Treatment

Existing Urban Design Treatment Map

What it does:

- Designates boulevards and intersections for enhanced streetscape improvements, landscaping and pedestrian amenities – beyond standard

Examples:

- Boulevards: 148th Ave and Lake Hills Connector have seen landscape improvements and exemplify the Boulevard designation
- Designated Intersections: NE 8th St. and 156th Ave NE at Crossroads and NE 8th St and 116th Ave NE at Whole Foods have received enhanced pedestrian features and landscaping

Specific issues with current map:

- Streets and intersections with different characters have the same designation
 - 119th vs. 148th
- No clarity regarding why specific streets and intersections are designated
 - 140th vs. 156th
- Map identifies “enhanced” streets, but does little to inform street or intersection character

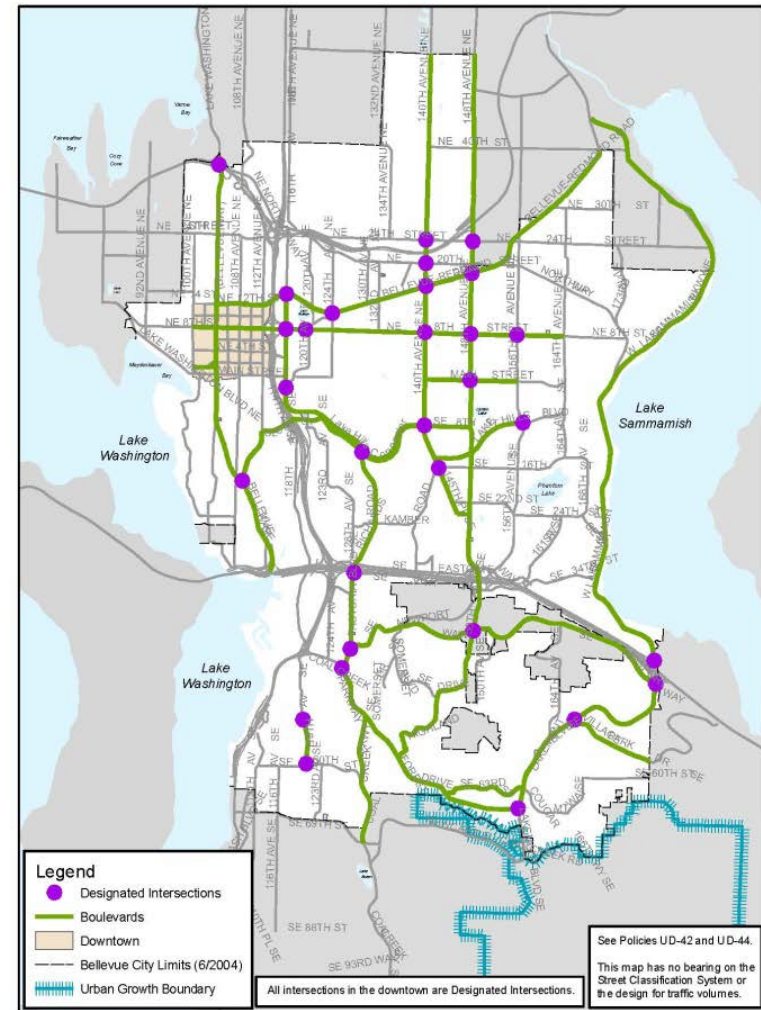


FIGURE UD.1
Urban Design Treatment
For Boulevards and Designated Intersections

Urban Design & the Arts

Significant Change—Urban Boulevards Treatment

What types of streets or intersections deserve additional attention beyond standard treatment?

- Major, cross-city corridors
- Connections along and through parks and open space
- Streets adjacent to neighborhood shopping areas
- Key local neighborhood connections
- Important intersections connecting major arterials, important neighborhood locations and key entries into the city

Proposed Designations:

- City Boulevards
- Scenic Boulevards
- Neighborhood Shopping Street
- Neighborhood Greenways
- Intersections:
 - Key City Entry Points
 - Neighborhood Identity Point
 - Designated Intersection



Urban Design & the Arts

Significant Change—Urban Boulevards Treatment

Recommended Urban Design Treatment

City Boulevards:

- Are primary transportation corridors that connect different parts of the city
- Have a unifying corridor treatment while also incorporating the character of adjacent neighborhoods and areas

Scenic Boulevards:

- Emphasize a park-like streetscape
- Integrate elements from their surroundings into the design of the streetscape
- Allow visual access to natural and open space areas, parks and other natural features

Policy support: UD-42, NEW-18, UD-44 AND UD-46



Urban Design & the Arts

Significant Change—Urban Boulevards Treatment

Neighborhood Shopping Streets

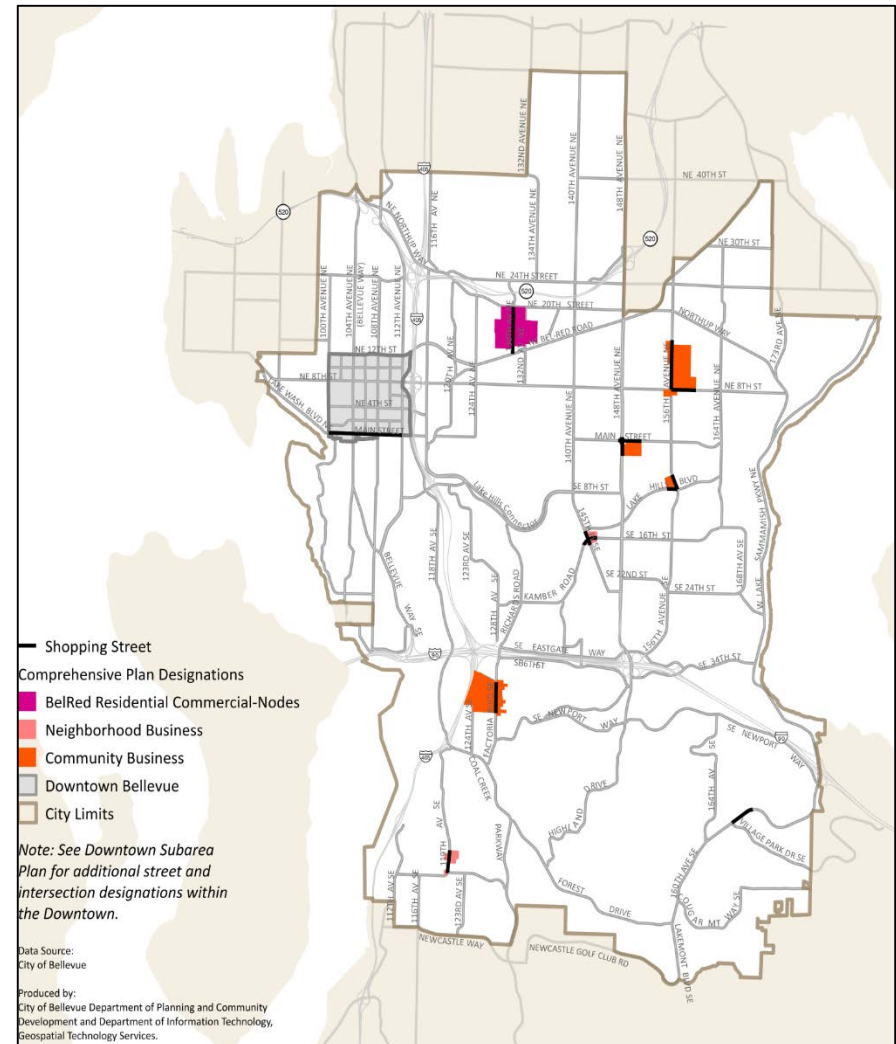
Shopping Streets are streets that:

- Could operate as a neighborhood's “Main Street”
- Are adjacent to a neighborhood shopping area
- Are potential community gathering spaces/third places
- Have opportunities to exemplify/reinforce/enhance neighborhood character

Examples:

- 119th Avenue SE in Newport Hills
- 156th Avenue NE in front of Crossroads

Policy support: NEW-19



Urban Design & the Arts

- New Arts & Culture subsection
 - **Facilities:** local and regional approach to address chronic facility shortage (UD-36, UD-X2)
 - **Lifelong arts education:** at all skill levels (UD-X3)
 - **Public art:** integral to city character
 - **Cultural diversity:** Connection through art (UD-X1)

Urban Design & the Arts

- **Sustainability in design** – support for integration of environmental technologies (UD-X6, X7)
- **Neighborhood centers** – reinforce importance and character (UD-X14, 59, X19)
- **Pedestrian experience** – work toward making pedestrian areas comfortable, safe and attractive (UD-75, 66, 40, X18, X19)
- **Street trees** – appropriate tree types and planting to improve tree canopy (UD-X17)

Urban Design & the Arts

- Any questions about what is recommended for change?
- Any additional information needed on this topic?
- Any gaps or concerns to follow up on?

Tentative Review Schedule

April 6

Plng Commission
recommendation
presented by
Board &
Commission Chairs

April 20

Neighborhoods
Economic
Development
Parks,
Recreation
and Open
Space
Urban Design
and the Arts

April 27

Community
Engagement
Land Use
Transportation
Housing

May 11

Utilities
Capital Facilities
Human Services
Environment

June 1

Integration of
annual
amendments;
Final review
topics as
needed

June 15

Target for
Council action