



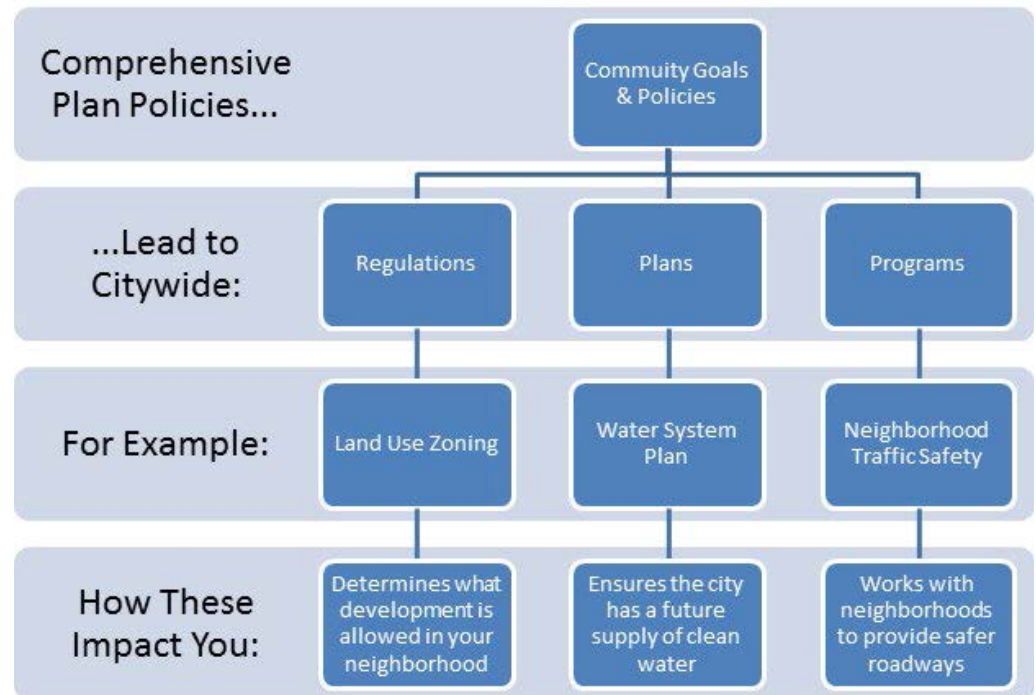
FORMINGour**FUTURE**

COMPREHENSIVE PLAN UPDATE

Bellevue City Council
June 8, 2015

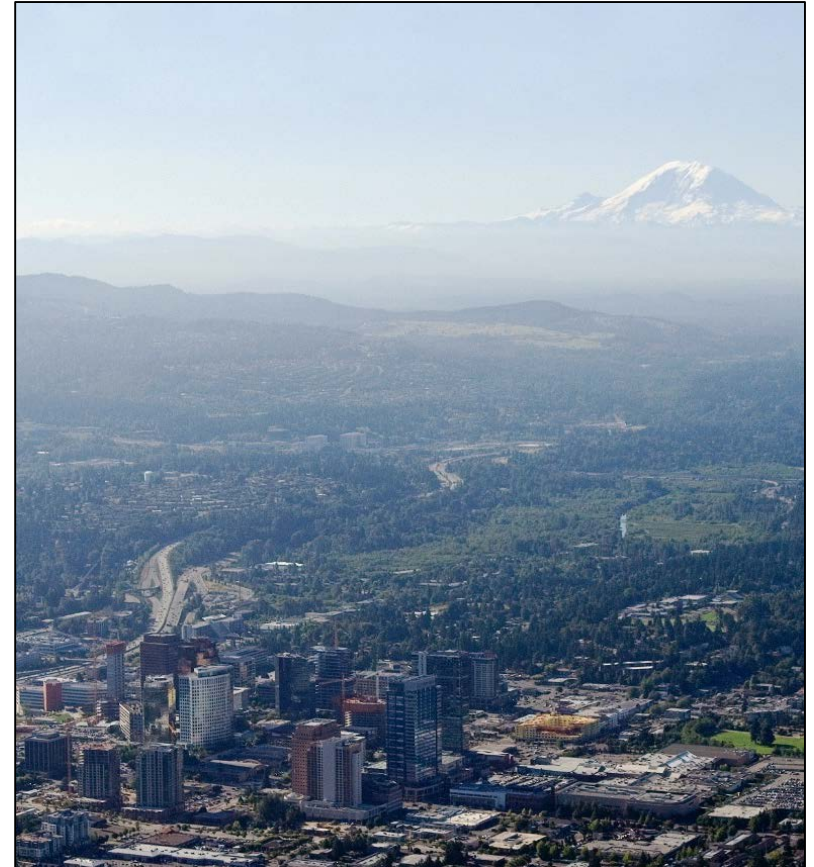
Comprehensive Plan Update

- Reflect local values and priorities
- Address long-term needs of the community, economy and environment
- Strengthen the policy foundation for City decisions, investments and actions
- Make the plan more accessible and usable so that it remains an effective tool



Tonight's Meeting

- Recap process/schedule for Council review
- Complete overview of individual elements
 - **Urban Design & the Arts**
 - **Human Services**
 - **Environment**
 - **Utilities**
 - **Volume 2**
 - Opportunity to identify issues, ask questions, provide initial feedback on changes
- June 15-22 - Conduct follow-up and resolve changes
- July – Act on final plan



Council Review Process

Round 1

- **First review of draft elements; initial Council feedback on questions and specific issues**
- April 6—Overview presentation by joint commissions
- April 20—Citizen Engagement; Neighborhoods; Economic Development; Parks
- April 27—Land Use; Housing
- May 11—Housing, Transportation
- June 1—Capital Facilities; Utilities; Environment; Human Services; Urban Design and the Arts; Volume 2
- June 8 – Complete Round 1 - Unfinished items from June 1

Round 2

- **Focused on short list of key issues identified by Councilmembers**
- **Councilmembers propose changes/refinements; Council resolves**
- June 15—Review short list of items identified by Council
- June 22—Any unfinished topics; wrap-up

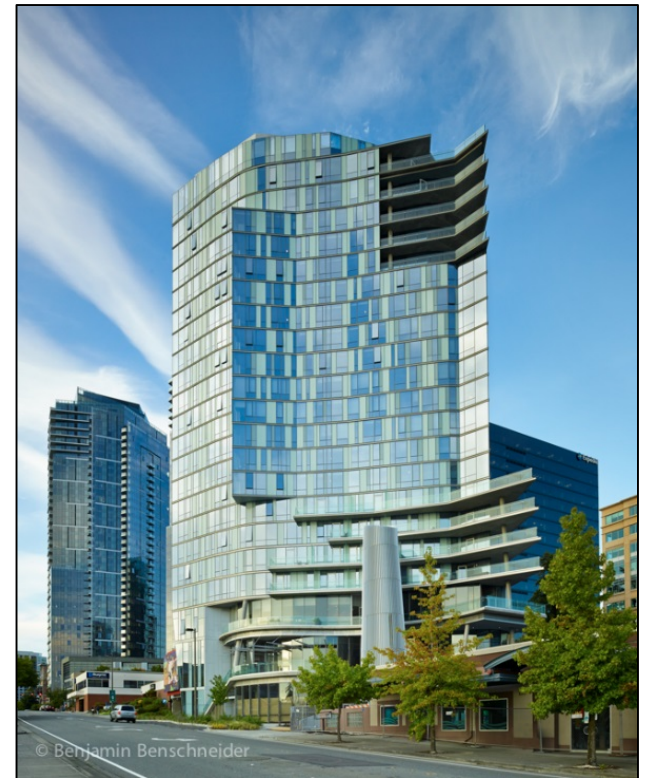
Action – July 20

Urban Design & the Arts Vision

In 2035...

BELLEVUE CREATES EXTRAORDINARY PLACES FOR PEOPLE, AND EMBRACES THE ARTS AS AN INTEGRAL PART OF THE COMMUNITY.

Through keen attention to urban design, Bellevue's new buildings are contributing to the memorability, livability and character of the City and its neighborhoods. Rich expressions of arts and culture are found throughout the City; they are embraced by residents and "must see" attractions for visitors.



Urban Design & the Arts

Significant Change—Urban Boulevards Treatment

Existing Urban Design Treatment Map

What it does:

- Designates boulevards and intersections for enhanced streetscape improvements – beyond standard

Examples:

- Boulevards: 148th Ave and Lake Hills Connector
- Designated Intersections: NE 8th St. and 156th Ave NE at Crossroads and NE 8th St and 116th Ave NE at Whole Foods

Specific issues with current map:

- Streets and intersections with different characters have the same designation
 - 119th vs. 148th
- No clarity regarding why specific streets and intersections are designated
 - 140th vs. 156th
- Map identifies “enhanced” streets, but does little to inform street or intersection character

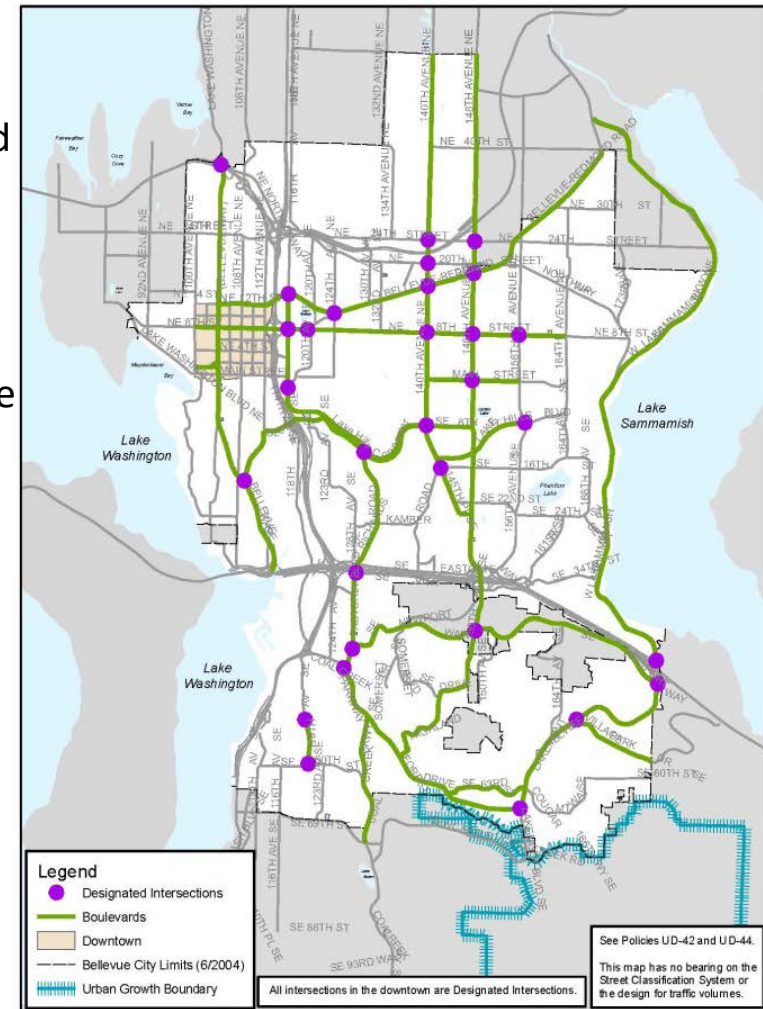


FIGURE UD.1
Urban Design Treatment
For Boulevards and Designated Intersections



Urban Design & the Arts

Significant Change—Urban Boulevards Treatment

What types of streets or intersections deserve additional attention beyond standard treatment?

- Major, cross-city corridors
- Connections along and through parks and open space
- Streets adjacent to neighborhood shopping areas
- Key local neighborhood connections
- Important intersections connecting major arterials, important neighborhood locations and key entries into the city



Proposed Designations:

- City Boulevards
- Scenic Boulevards
- Neighborhood Shopping Street
- Neighborhood Greenways
- Intersections:
 - Key City Entry Points
 - Neighborhood Identity Point
 - Designated Intersection



Urban Design & the Arts

Significant Change—Urban Boulevards Treatment

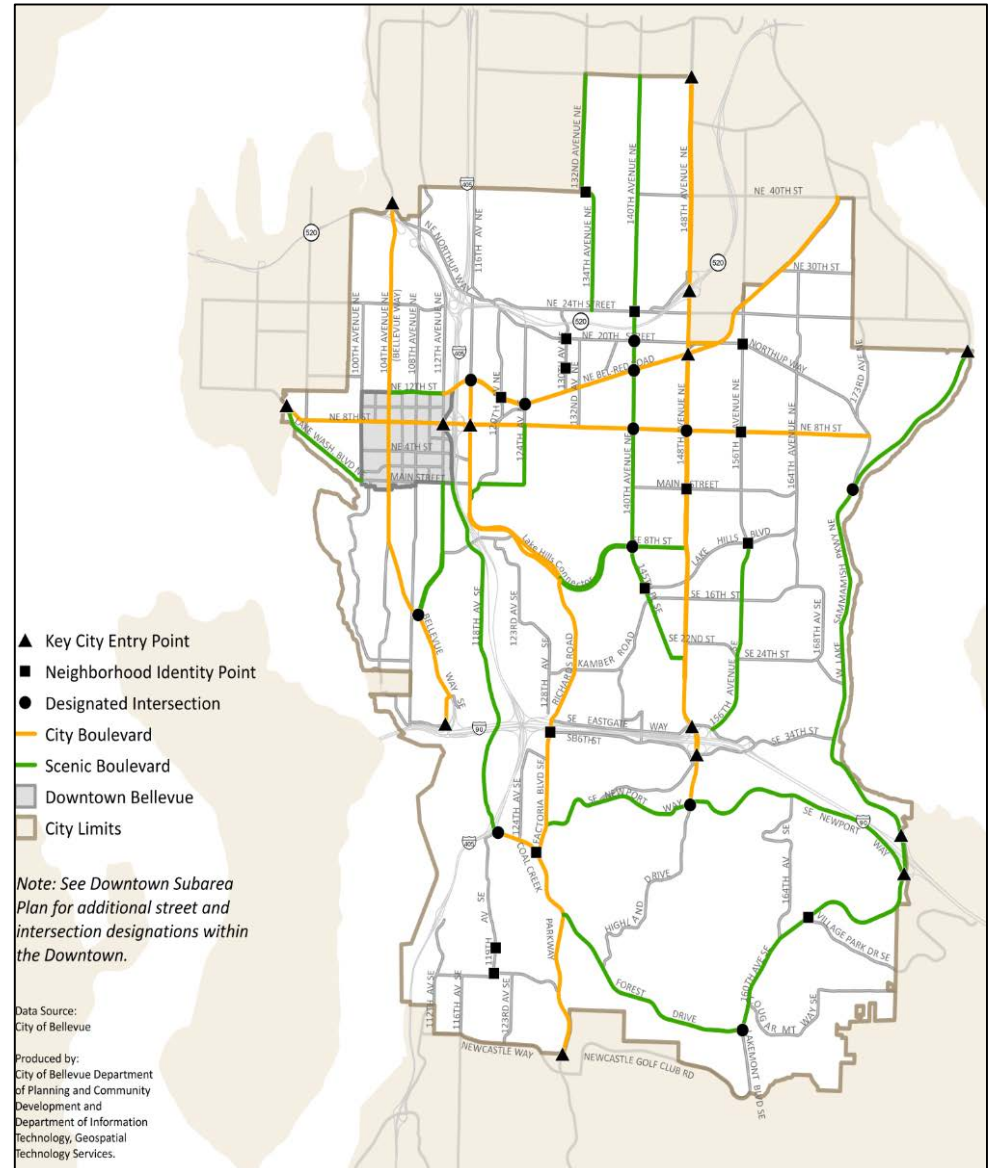
City Boulevards:

- Primary transportation corridors that connect across the city
- Unifying corridor treatment while also incorporating the character of adjacent neighborhoods and areas

Scenic Boulevards:

- Emphasize a park-like streetscape
- Integrate elements from their surroundings into the design of the streetscape
- Allow visual access to natural and open space areas, parks and other natural features

Policy support: UD-42, X18, 44 AND 46



Urban Design & the Arts

Significant Change—Urban Boulevards Treatment

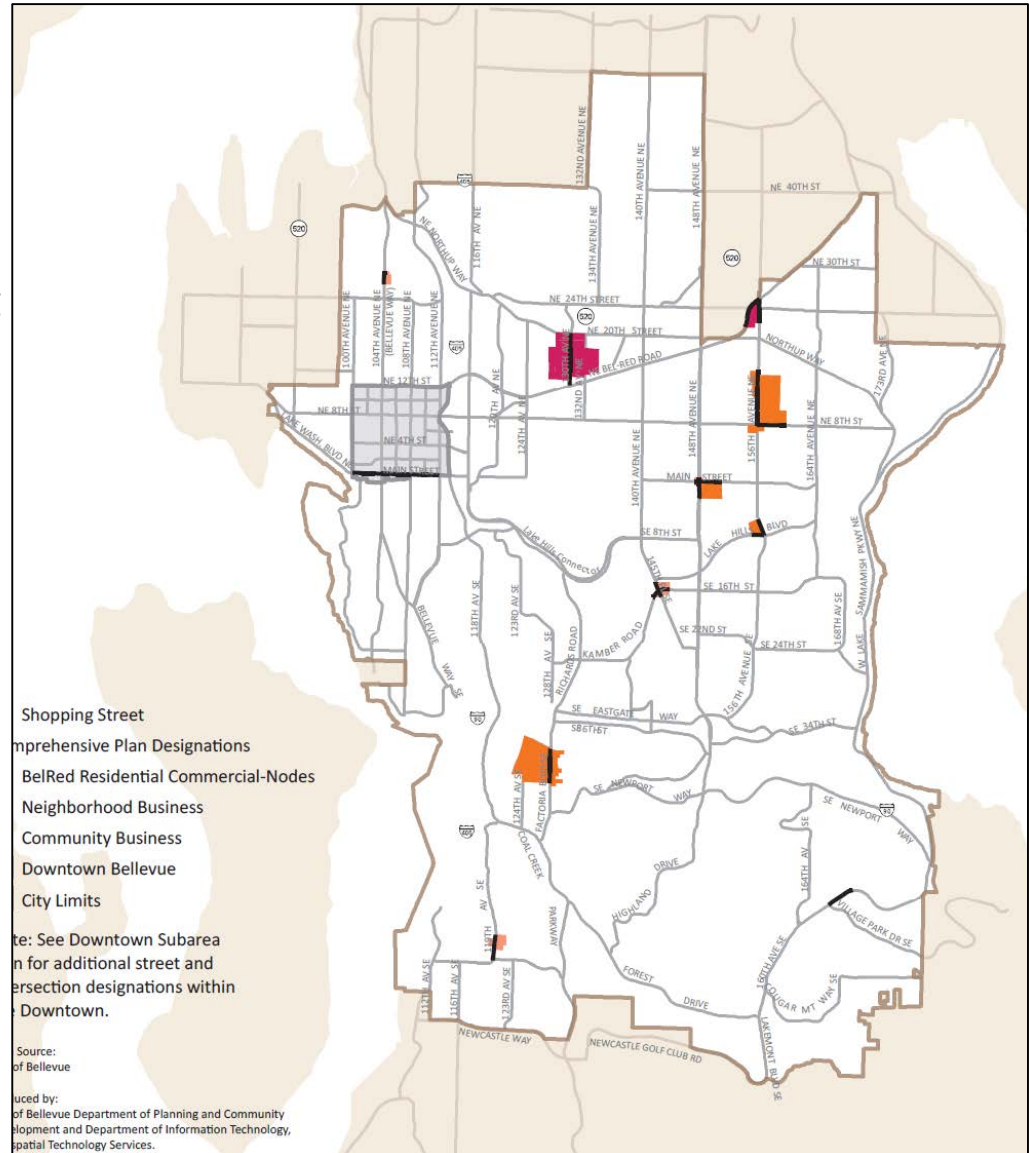
Neighborhood Shopping Streets

- Could operate as a neighborhood's "Main Street"
- Adjacent to neighborhood shopping area
- Potential community gathering spaces/third places
- Opportunities to exemplify/reinforce/enhance neighborhood character

Examples:

- 119th Avenue SE in Newport Hills
- 156th Avenue NE in front of Crossroads

Policy support: UD-X19



Urban Design & the Arts

- **New Arts & Culture subsection**
 - **Facilities:** local and regional approach to address chronic facility shortage (UD-36, UD-X2)
 - **Lifelong arts education:** at all skill levels (UD-X3)
 - **Public art:** integral to city character
 - **Cultural diversity:** Connection through art (UD-X1)



Urban Design & the Arts

Other significant changes:

- **Sustainability in design** – support for integration of environmental technologies (UD-X6, X7)
- **Neighborhood centers** – reinforce importance and character (UD-X14, 59, X19)
- **Pedestrian experience** – work toward making pedestrian areas comfortable, safe and attractive (UD-75, 66, 40, X18, X19)
- **Street trees** – appropriate tree types and planting to improve tree canopy (UD-X17)



Urban Design & the Arts

- Any questions about what is recommended for change?
- Any additional information needed on this topic?
- Any gaps or concerns to follow up on?

Human Services Vision

In 2035...

BELLEVUE IS A COMMUNITY
THAT CARES.

Every member of the community has the opportunity to achieve their potential and enhance their quality of life. A system of human services assists people in times of need and invests in the development of healthy individuals and families.



Human Services

- Scale of need and diversity has changed making delivery of human services more complex
- Policy changes to reflect changing demographic – HS-12, 13, 11
- Protection of individual rights – HS-X3
- Encourage network of services to serve the entire city – HS-X1
- Proposed new policy encourages a coordinated local response to homelessness through the provision of housing and supportive services – HS-X2



Human Services

- Any questions about what is recommended for change?
- Any additional information needed on this topic?
- Initial direction on specific changes/refinements to the draft policies?

Environment Vision

In 2035...

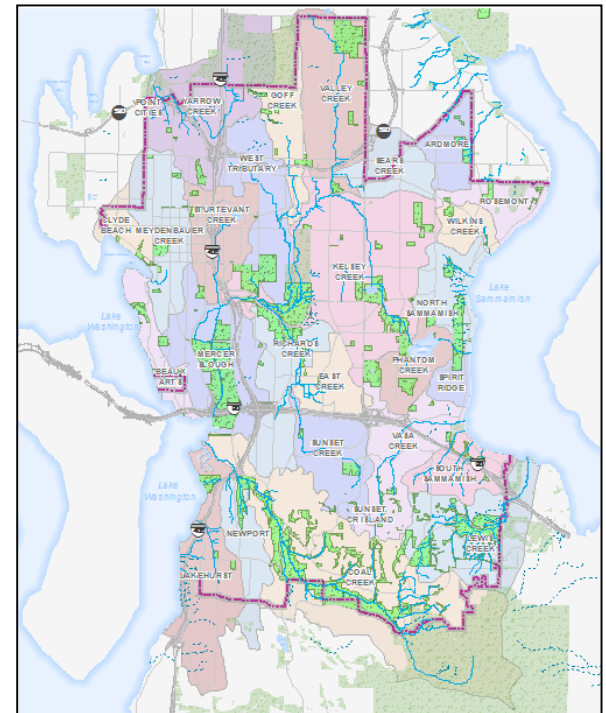
BELLEVUE EMBRACES ITS STEWARDSHIP OF THE ENVIRONMENT BY PROTECTING AND RETAINING NATURAL SYSTEMS, AND BUILDING FOR A SUSTAINABLE FUTURE.

As growth and development occurs, Bellevue is working to build a healthier, greener, and more sustainable future for generations to come. New buildings are designed to protect and even restore natural systems. The community highly values and celebrates the results, such as reduced energy use and greenhouse gas emissions, increasing tree canopy, and more salmon in local creeks.



Environment

- Element guides critical areas protection and City's Environmental Stewardship program
- Significant change in community interest and environmental conditions since 2004
- Joint boards and commission interest in:
 - Tree canopy targets
 - Collaboration and partnerships
 - Life cycle materials management
 - Greener buildings and infrastructure
 - Addressing state/regional direction on greenhouse gas emissions
 - Low impact development consistent with NPDES



Fish Distribution

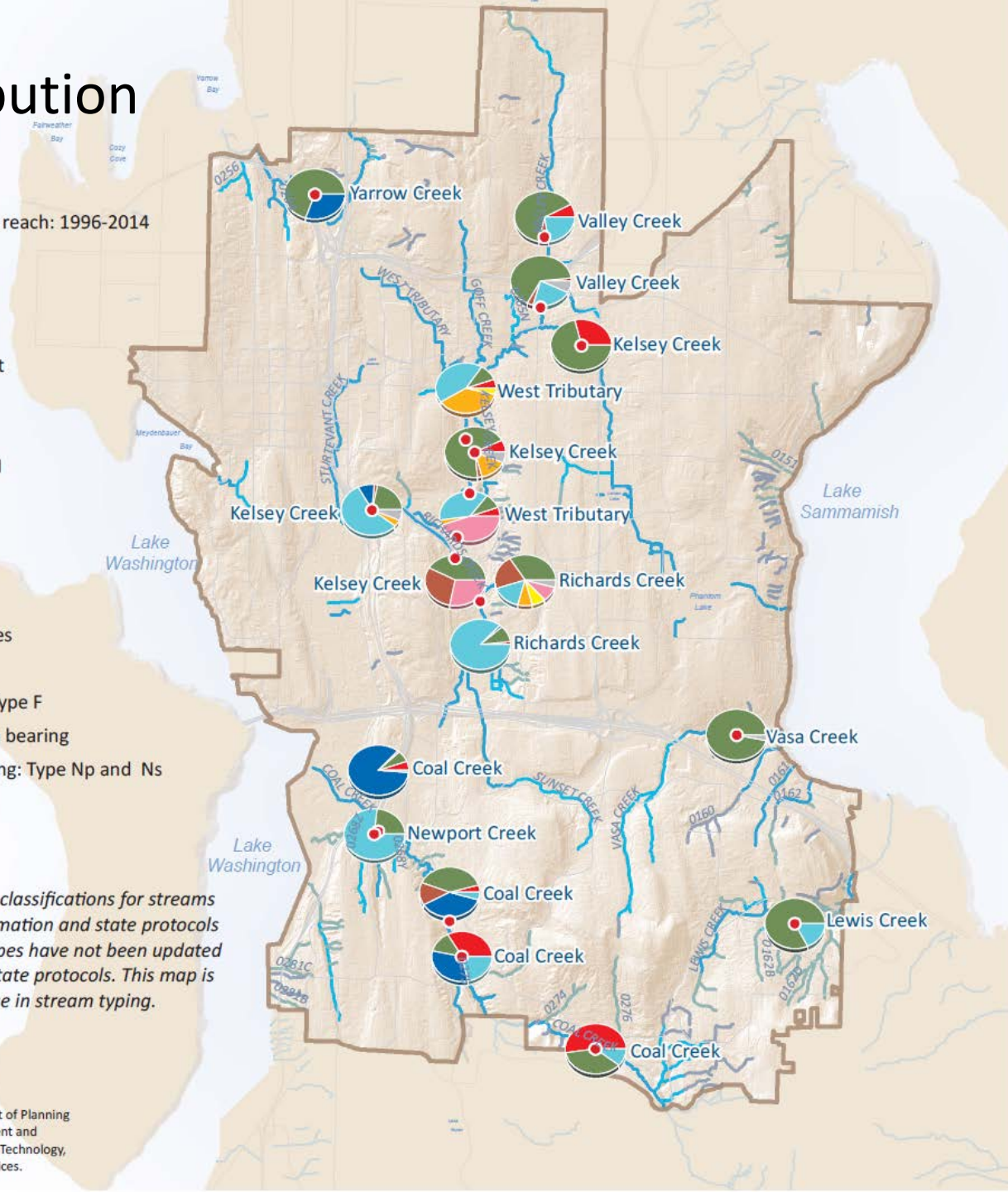
Fish distribution in reach: 1996-2014



Note: Fish bearing classifications for streams are based on information and state protocols in 2001. Stream types have not been updated to reflect current state protocols. This map is not intended for use in stream typing.

Data Source:
City of Bellevue

Produced by:
City of Bellevue Department of Planning
and Community Development and
Department of Information Technology,
Geospatial Technology Services.



Environment

- **Greenhouse Gas Emissions.** New policy EN-X1 supports establishing a citywide GHG target and actions to reduce emissions consistent with Bellevue's participation in collaborative climate efforts
- **Partnerships for Habitat Improvement.** New policy EN-X2 supports partnerships with private landowners to allow for habitat improvements
- **Life Cycle Materials Management.** Reduce use of materials as a means to reduce waste and carbon emissions - new policies EN-X4 and X5



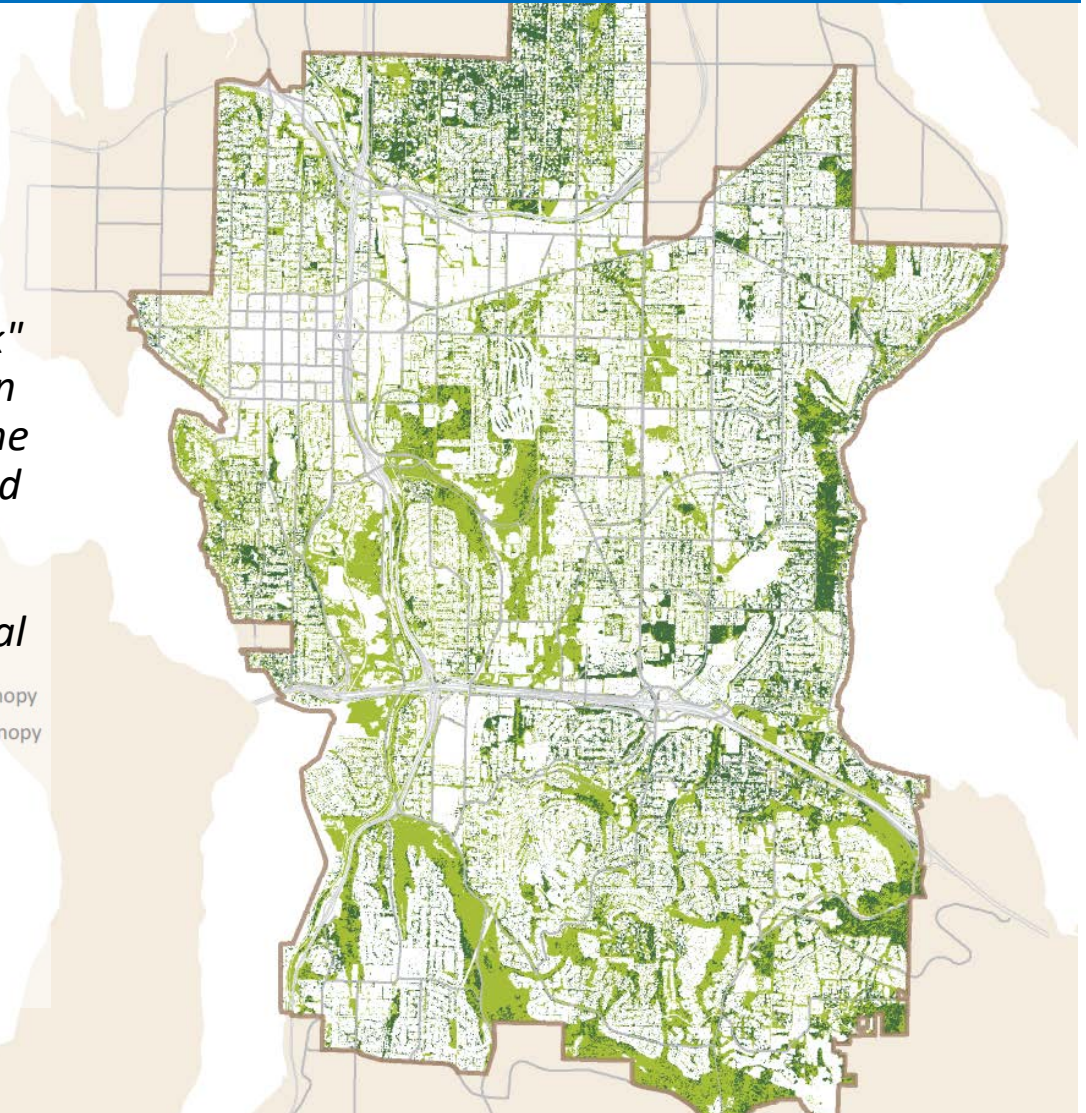
Environment – Tree Canopy

- **Tree Canopy Targets**
 - *EN-X3 Work toward a citywide tree canopy target of at least 40% canopy coverage that reflects our "City in a Park" character and maintain an action plan for meeting the target across multiple land use types including right-of-way, public lands, and residential and commercial uses.*
- **New policy EN-X10** – minimize and mitigate for the loss of trees from transportation and infrastructure projects

Tree canopy
■ Evergreen tree canopy
■ Deciduous tree canopy
■ City Limits

Data Source:
City of Bellevue

Produced by:
City of Bellevue Department
of Planning and Community
Development and



Environment – Low Impact Development

- 2013-2018 NPDES (National Pollutant Discharge Elimination System) permit emphasizes use of Low Impact Development
- Addressed in multiple elements –
 - Environment, Urban Design, Utilities, Transportation and Parks
- Plan continues current policy direction to manage stormwater and minimize impervious surfaces
- New Environment Policy EN-X6:
 - *EN-X6 – Make low impact development the preferred and commonly-used approach to site development to minimize native vegetation loss and stormwater runoff.*
 - *Council option to add “...minimize impervious surfaces” to more clearly align with objectives*
- EN-18, EN-X9 support LID education and incentives
- New UT-X7, UT-X11 supports use of LID in infrastructure projects
- More about NPDES/LID and stormwater at upcoming June 22 LID Principles Project Update Study Session



Environment

- Any questions about what is recommended for change?
- Any additional information needed on this topic?
- Initial direction on specific changes/refinements to the draft policies?

Utilities Vision

In 2035...

BELLEVUE HAS THE PUBLIC AND PRIVATE UTILITIES THAT MEET THE NEEDS OF A GROWING ECONOMY.

Public and private utilities are building the systems to grow a 21st century economy. These services are resilient, efficient, and available to the entire community. Utilities are sited, designed, and operated in a manner that maintains community character.



Utilities

Utilities Element ensures level of service to respond to community need

- **City Managed**

- Water
- Wastewater
- Stormwater
- Solid waste

- **Non-City Managed**

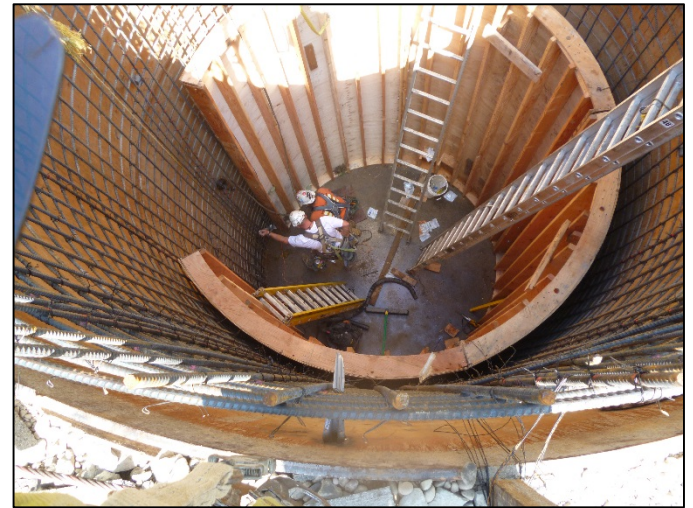
- Electrical
- Telecommunications
- Wireless
- Natural gas

Significant Drivers

- Community interest in widespread Internet access – one of top “Best Ideas”; also prior in ED Strategy Plan
- Reaction to new transmission lines
- Community desire to underground distribution lines
- Environmental awareness

Utilities – City Managed

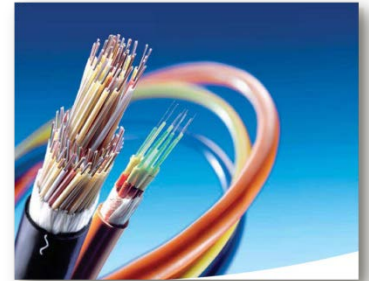
- **Asset Management** – New policy UT-X4 emphasizes cost effective management over lifetime
- **Utility System Functional Plans.** New policy UT-X6 provides a clearer link to utility functional system plans as the means for ensuring utility services for the next 20 years
- **Low impact development for stormwater management** (will discuss with Environment Element)



Utilities – High Speed Internet Access

Internet access

- ***UT-X14*** Encourage widespread, affordable, high-speed internet access, including access to competing telecommunications services and new forms of technology to provide the community with choice and to facilitate innovation.
- New policy UT-X2 encourages public/private partnerships that take advantage of the city's fiber optic network
- UT-X15, X16, and X17 support for maintaining Bellevue's position as a connected community, assessing internet coverage, and providing a balanced permitting process
- New Policy UT-X20 allows new aerial communication lines on existing aerial systems



Utilities – High Speed Internet Access

Telecommunication lines

- New Policy UT-X20 allows new aerial communication lines on existing aerial systems
 - May be aerial if existing electrical distribution lines are already aerial
 - Must be placed underground if electrical distribution lines are undergrounded
 - Cannot be aerial if no aerial system exists now
 - Required to be undergrounded at time electrical distribution lines are placed underground
 - New aerial communication lines must address visual impacts



Utilities – Power Lines

- Transmission line siting—already subject to environmental and sensitive siting review—existing policy approach in UT-72 through UT-74 retained

What's New?

- New policy UT-X19 adds support for working with the state and utilities to seek sufficient funding to fully mitigate impacts
- UT-X21 provides support for local neighborhood efforts to underground existing aerial distribution lines when neighborhoods demonstrate financial willingness
- UT-X18 determines when street project undergrounding is required and funding source



Utilities

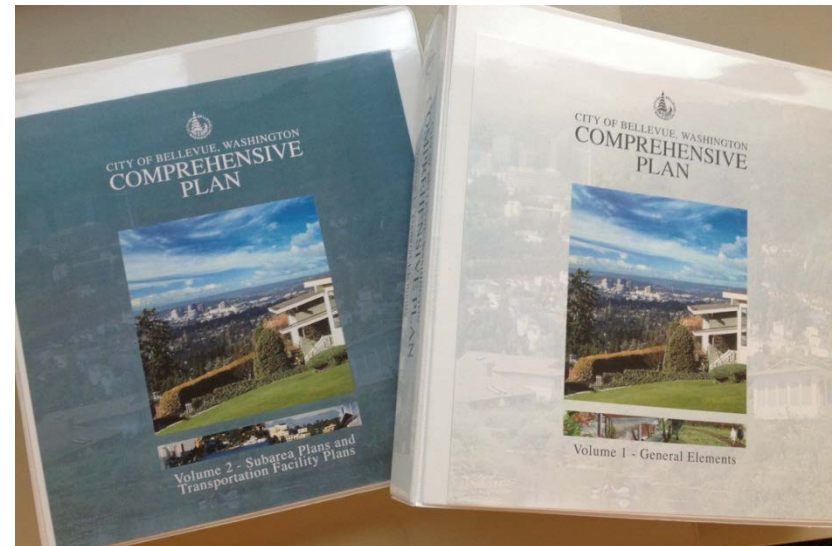
- Any questions about what is recommended for change?
- Any additional information needed on this topic?
- Initial direction on specific changes/refinements to the draft policies?

Volume 2

Provides additional sections beyond general elements

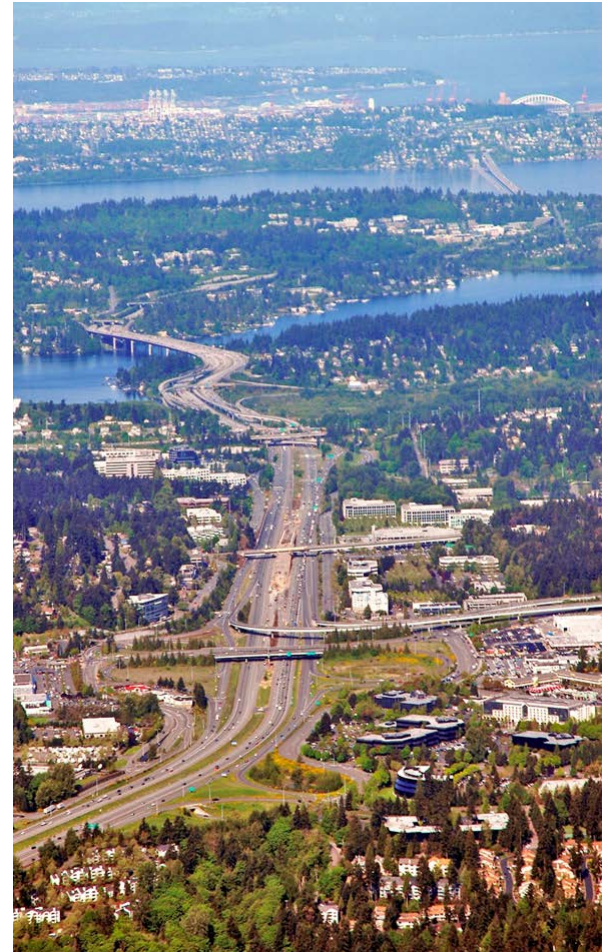
Includes:

- 14 subarea plans
- Bel-Red Overlake Transportation Facility Plan
- Bridle Trails/Bel-Red/Crossroads Transportation Facility Plan
- East Bellevue Transportation Plan
- Eastside Transportation Program
- Newcastle Transportation Facility Plans
- Pedestrian and Bicycle Transportation Plan



Volume 2

- Limited Subarea updates
 - Downtown southern boundary
 - Eastgate/I-90 plan – affects portions of Eastgate, Factoria and Richards Valley subarea plans
 - Removing S-SW-27 to support Surrey Downs Park master plan in Southwest Bellevue
- Transportation Facility Plans
 - Consolidated into single long-range project list



Volume 2 - Eastgate

- Create a vibrant, mixed-use center near the P&R and Bellevue College
- Continue to grow and support the employment area
- Improve transportation connectivity & alternatives
- Support neighborhood commercial uses
- Enhance character and the environment
- Supports upcoming zoning and code changes



Volume 2

- Any questions about what is recommended for change?
- Any additional information needed on this topic?
- Any gaps or concerns to follow up on?

Recap

- Recap of items for additional review
- Items identified by Council members to date:
 - How diversity is addressed throughout the plan
 - Growth targets
 - Neighborhood area mapping
 - Housing changes
 - Transportation changes
- Staff will ask Council to identify any additional items
- Review of state/PSRC comments
- Final staff edit review – check for errors
- Preparation of ordinance and final copy

Next Steps

June 15

- Begin Round 2
- Focus on short list of individual items identified by Councilmembers
- Work towards resolution of proposed changes

June 22

- Wrap up and confirm final changes
- Additional Study Session time available if needed

July 20

- Target action date