



Planning Commission Retreat 2019

Today and Tomorrow in Bellevue

November 13, 2019



Agenda

- Welcoming Remarks
- Trends and Demographics
- Looking into the Future
- Working Together
- Wrap-up





Who is Bellevue Today?

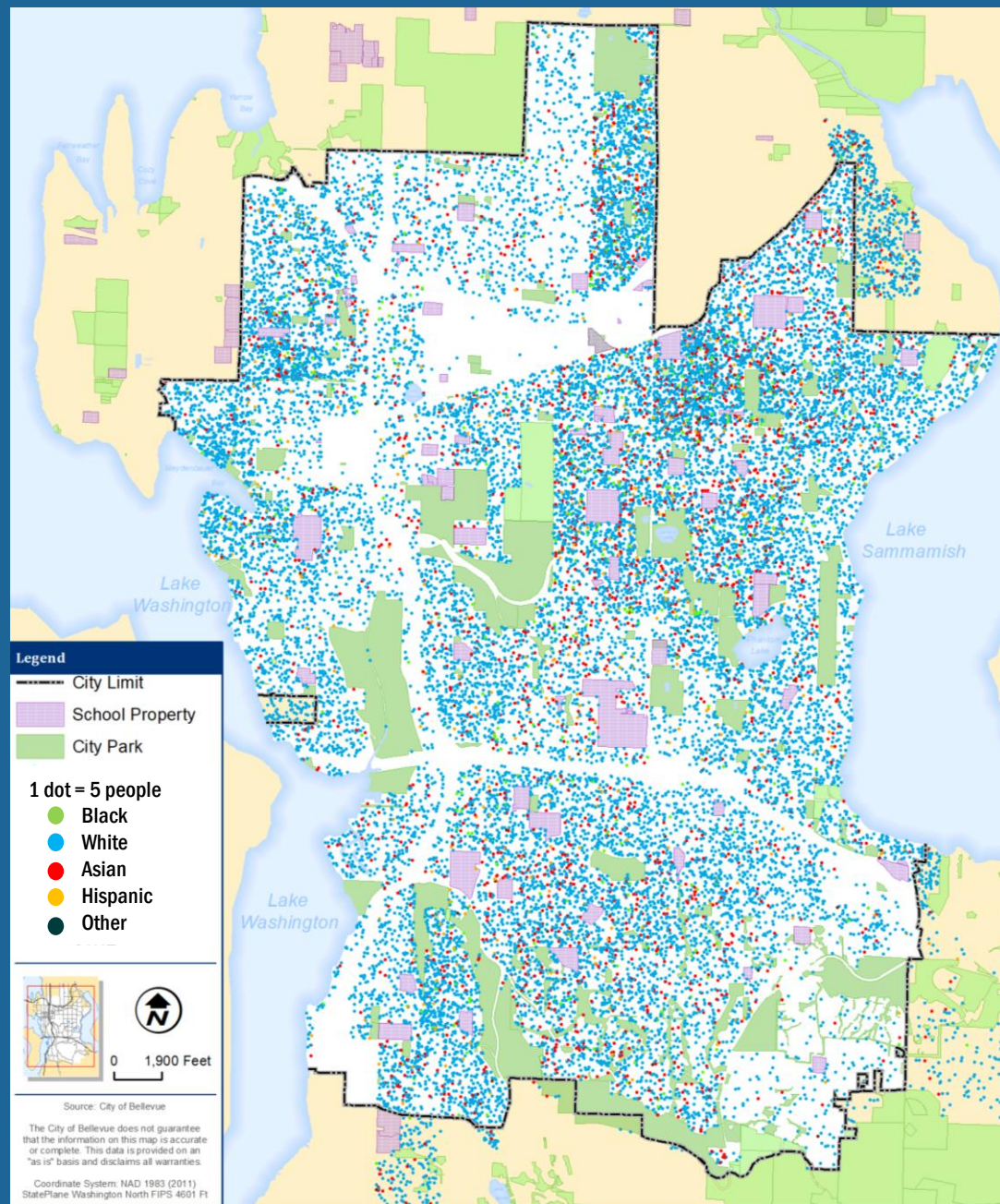
Trends and Demographics

November 13, 2019



Changes Over Time

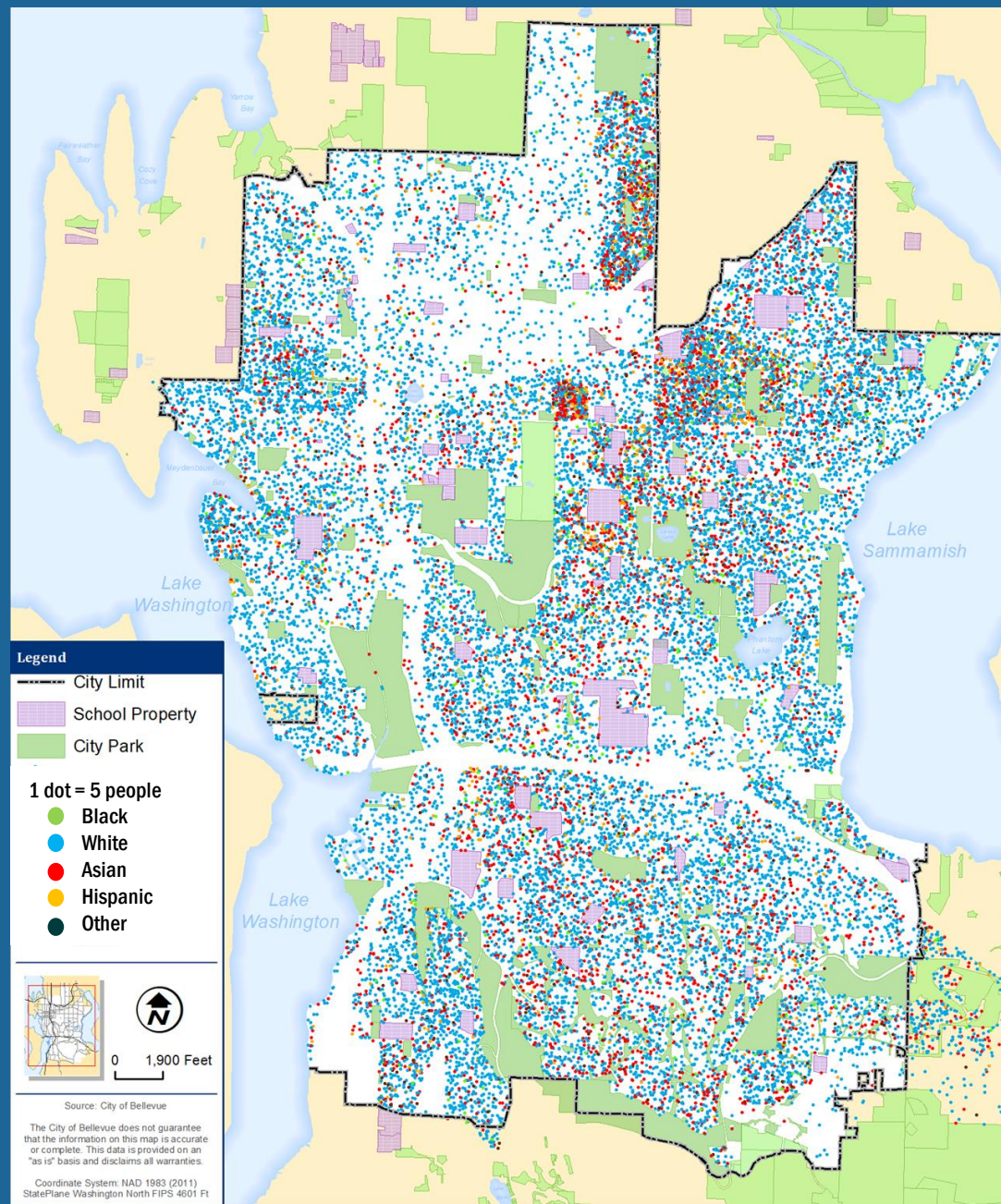
1990





Changes Over Time

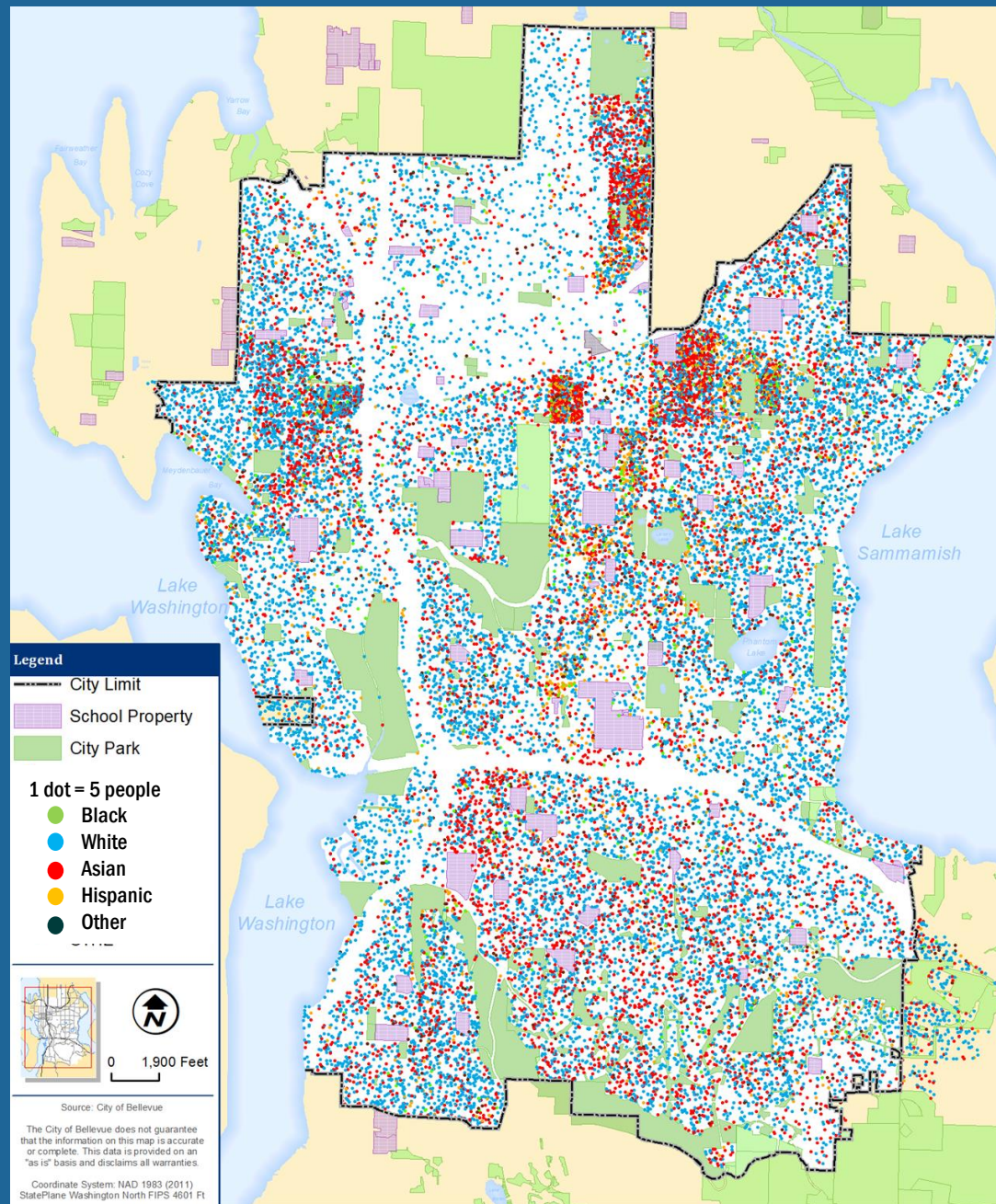
2000





Changes Over Time

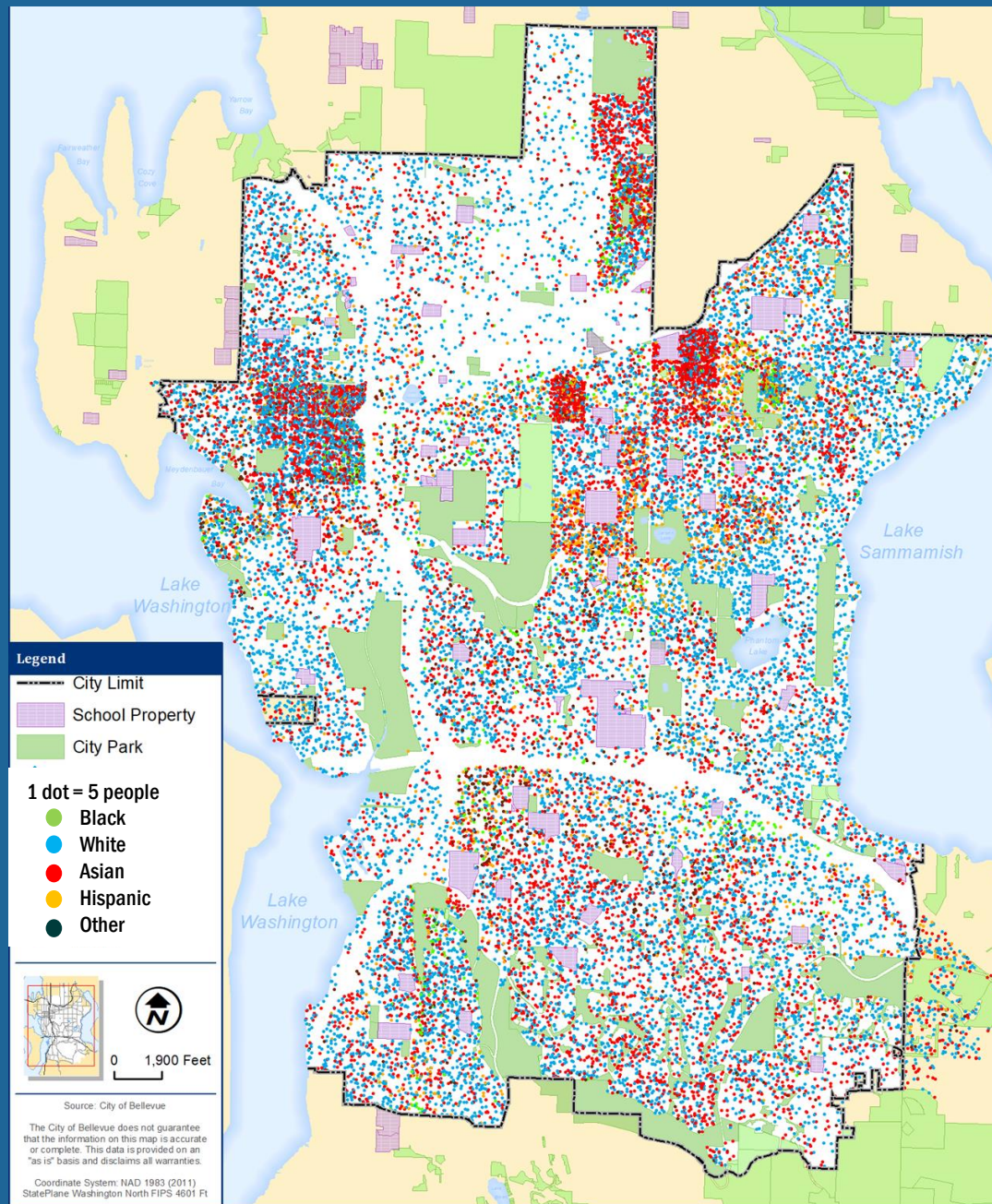
2010





Changes Over Time

2013-2017 average

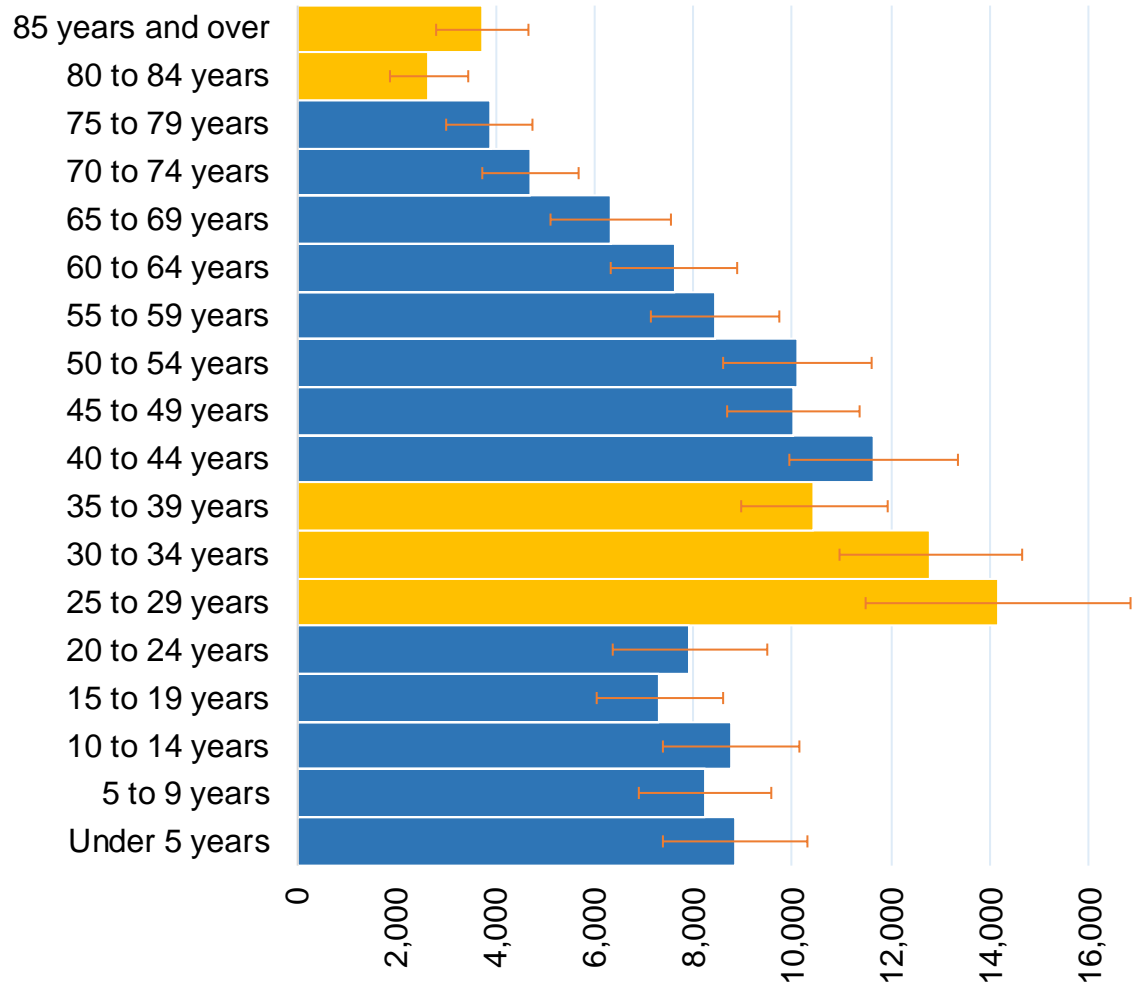


Bellevue's Age Cohorts

33% of population
is in the first half of
their careers...

...but not many
children

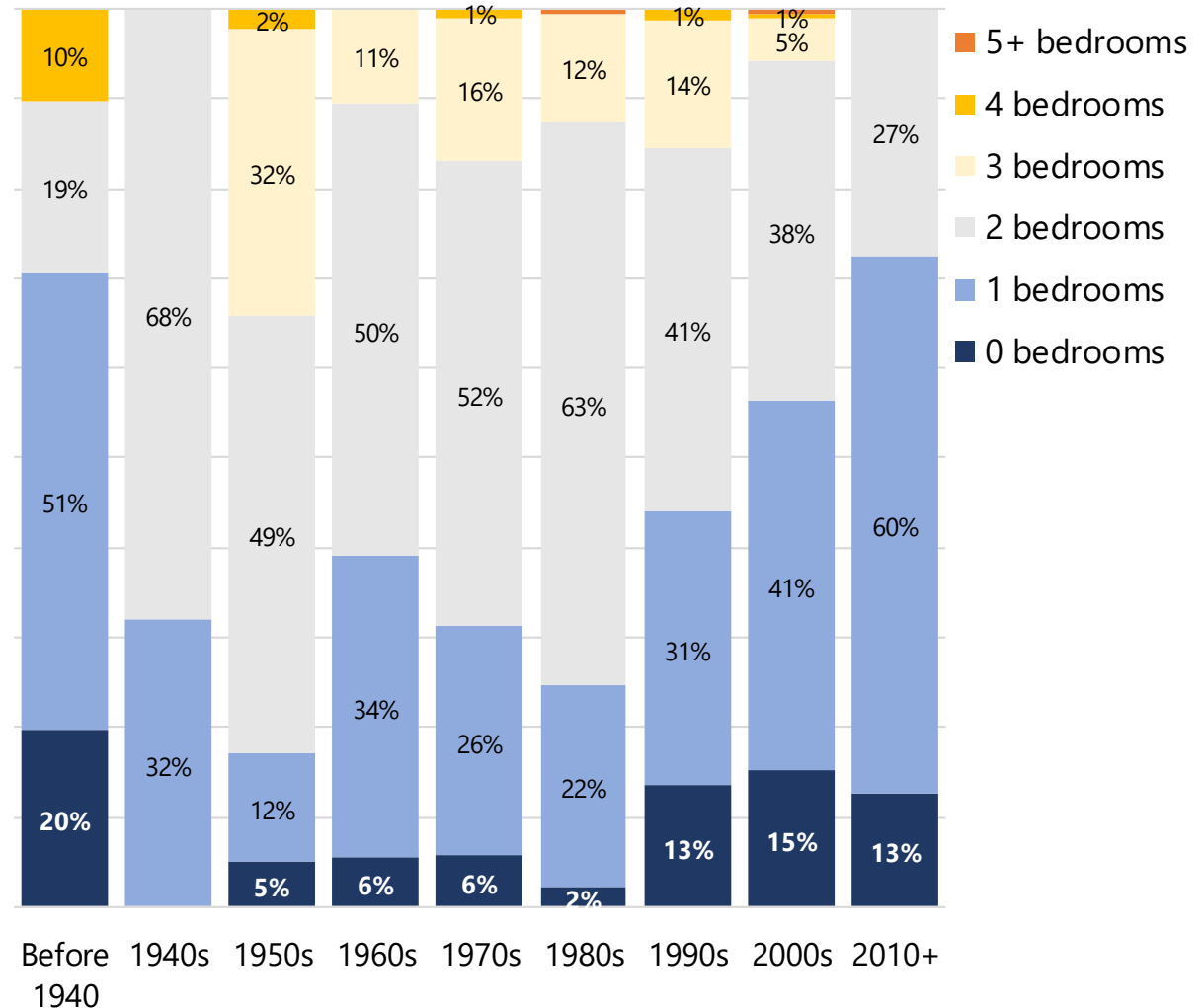
Population by 5-year Age Groups



MF Shift to Studios & 1 Beds

34% increase
in small homes

Multi-Family Housing By Year Built

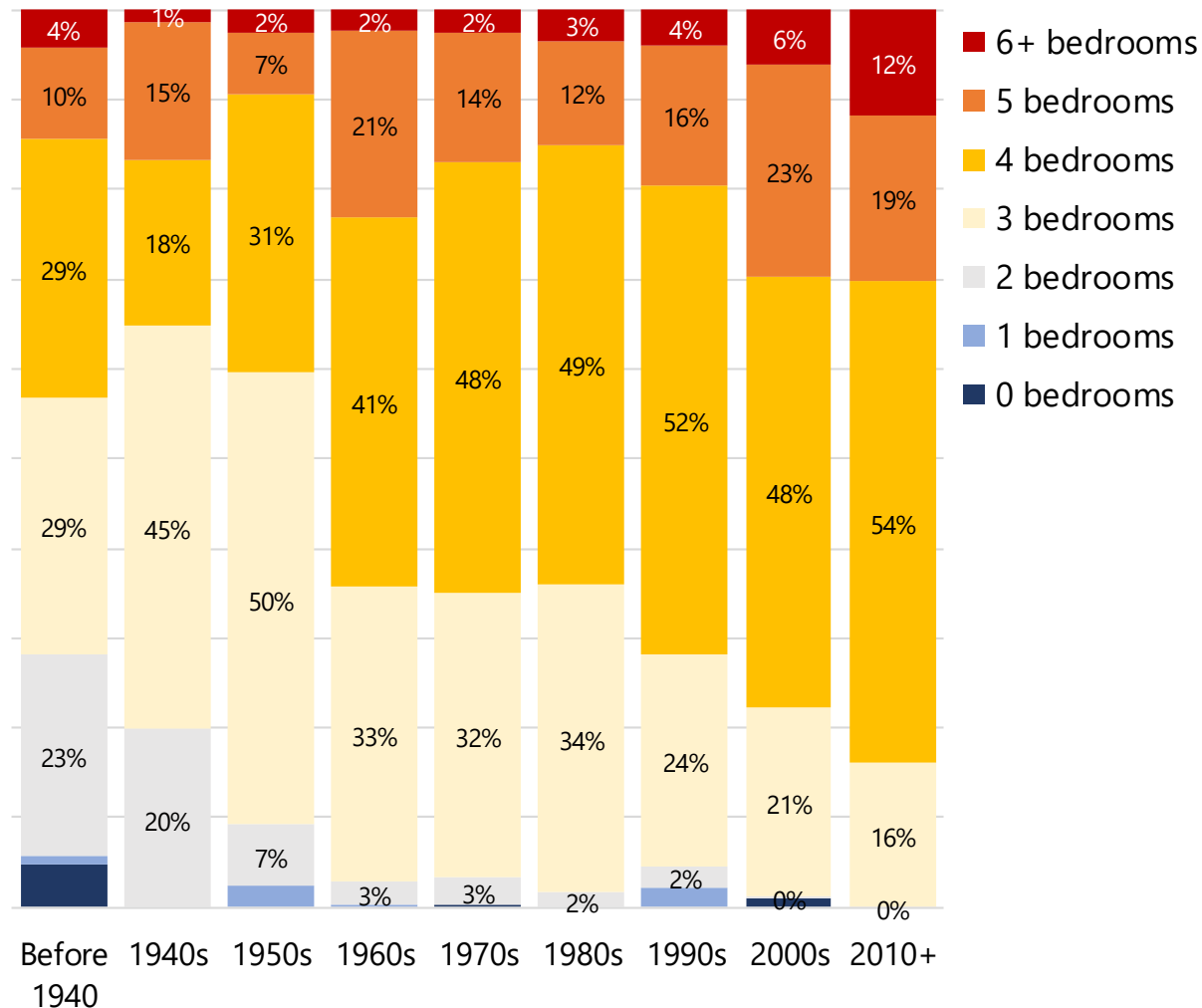


SF Homes Getting Bigger

2% decrease
in family-size
homes

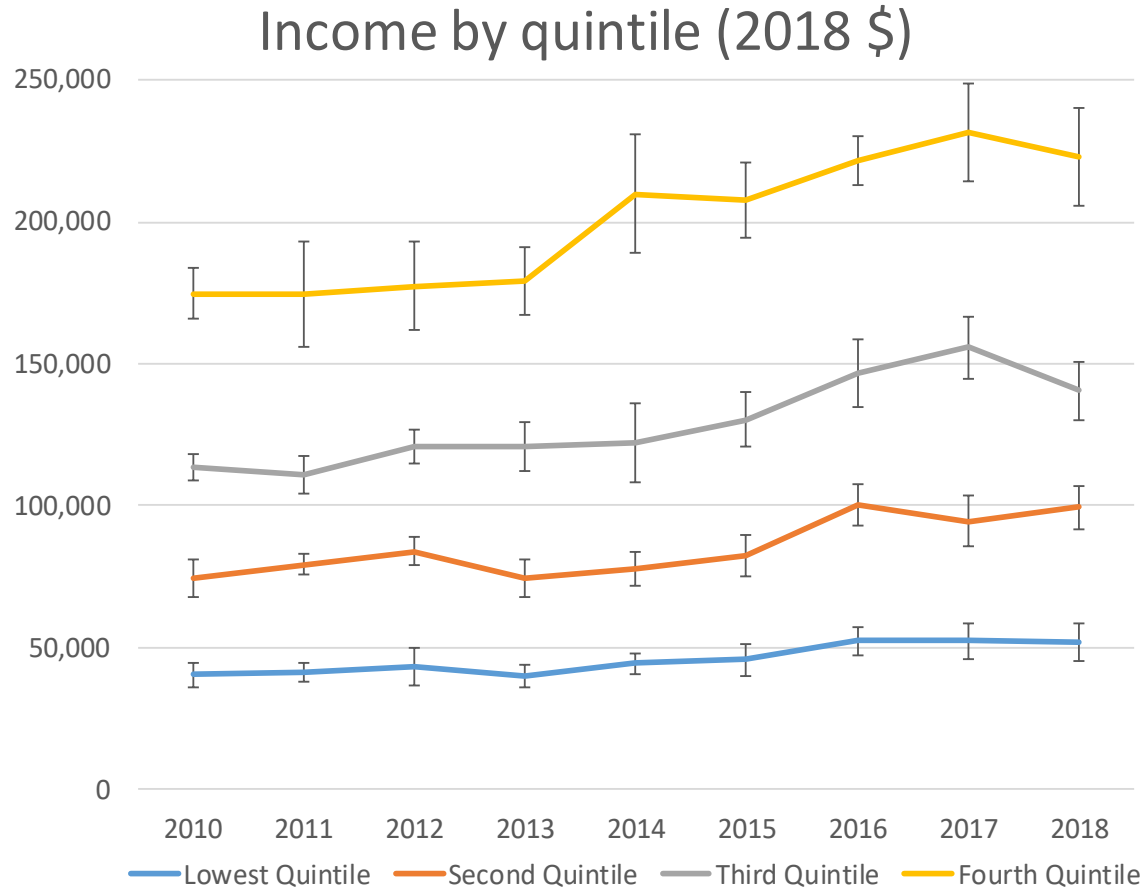
27% increase
in mega
homes

Single-Family Housing By Year Built



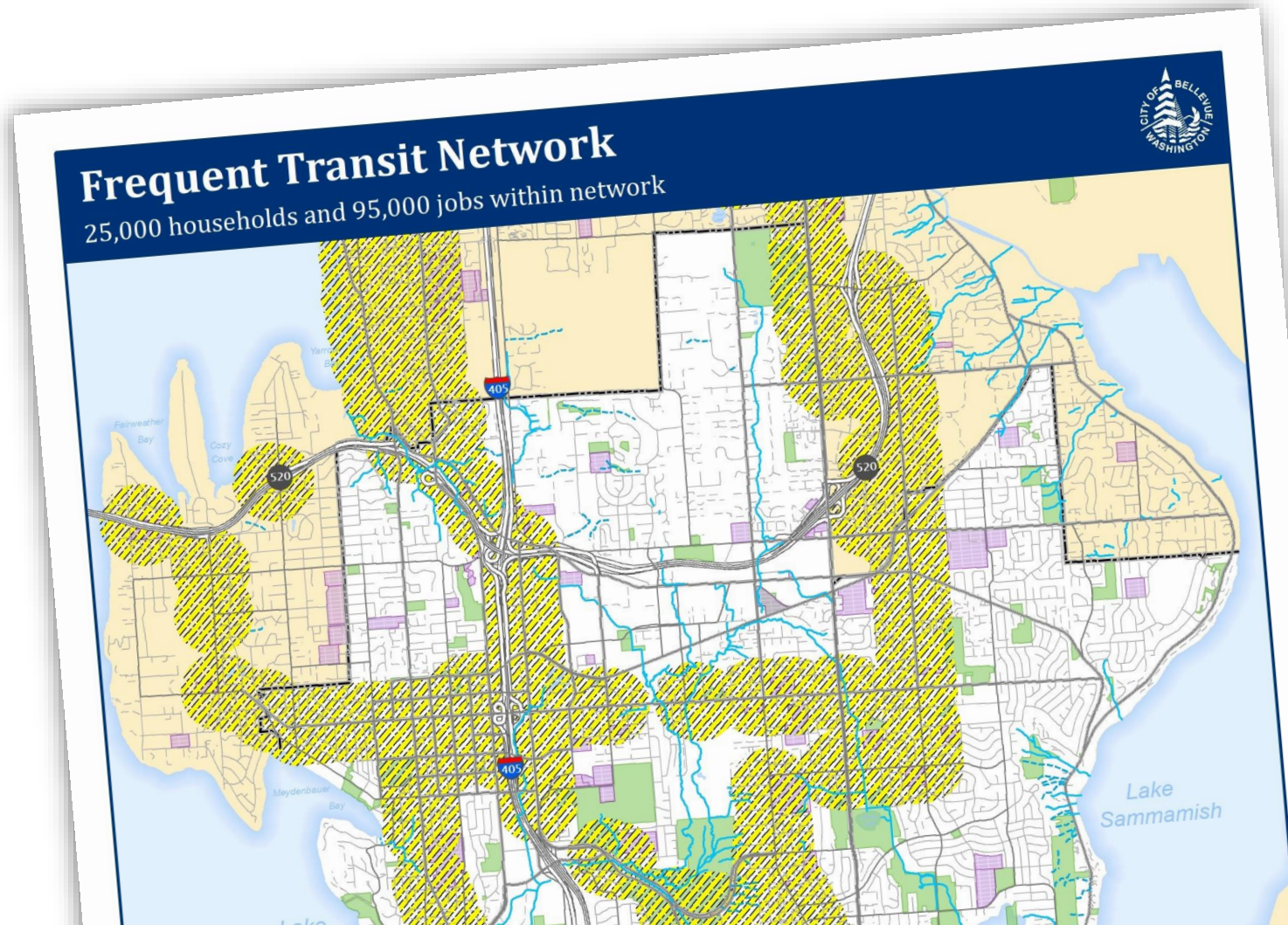
Income Inequality Increasing

27% increase in the gap between the **top 20%** and the **bottom 20%** of household income (2010-2018)



Source: US Census Bureau. 2010-2018 American Community Survey (1-year estimates), table B19080. Adjusted for inflation using the US Bureau of Labor Statistics, CPI Inflation Calculator.

Goal: Data to Inform Policy



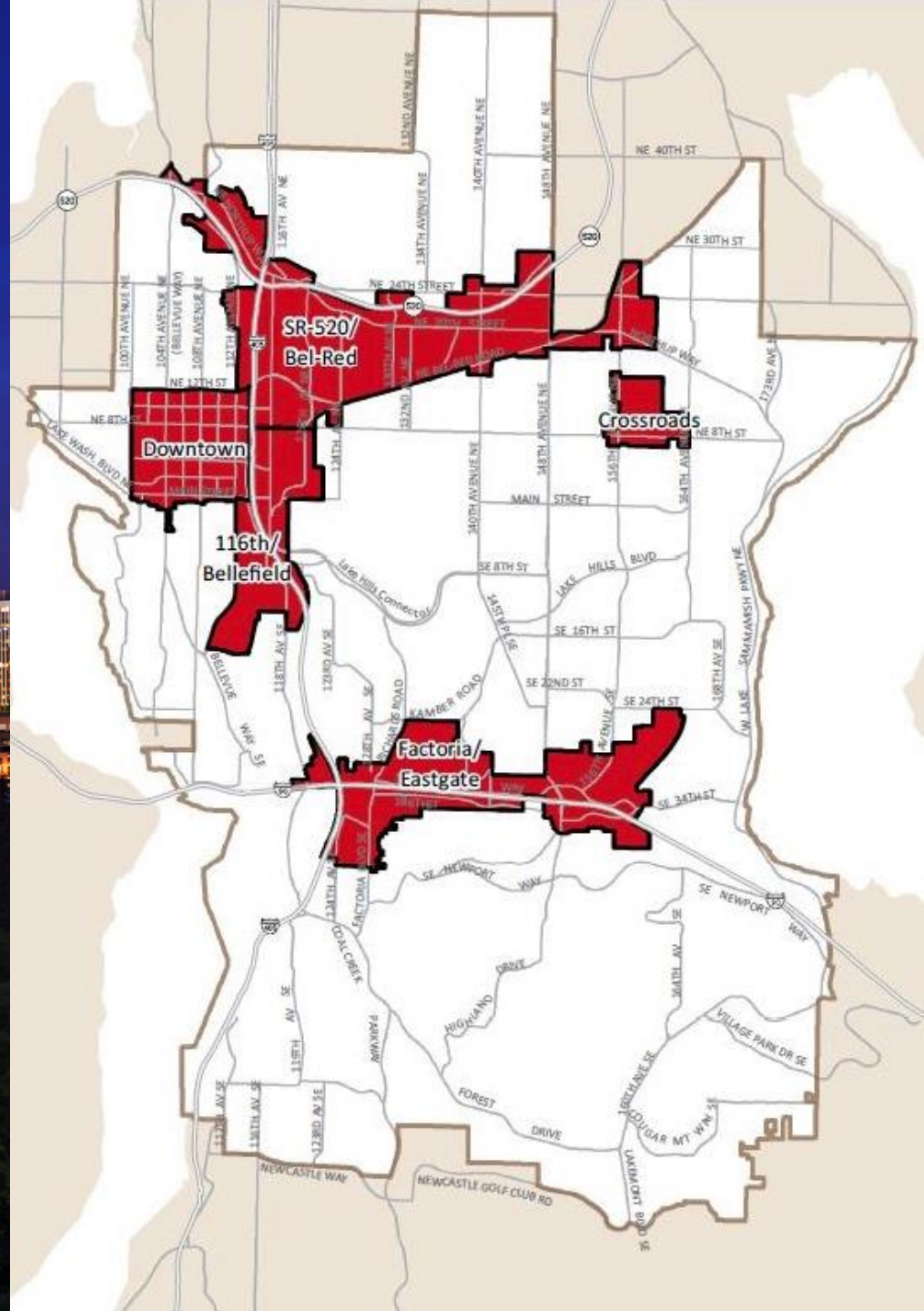


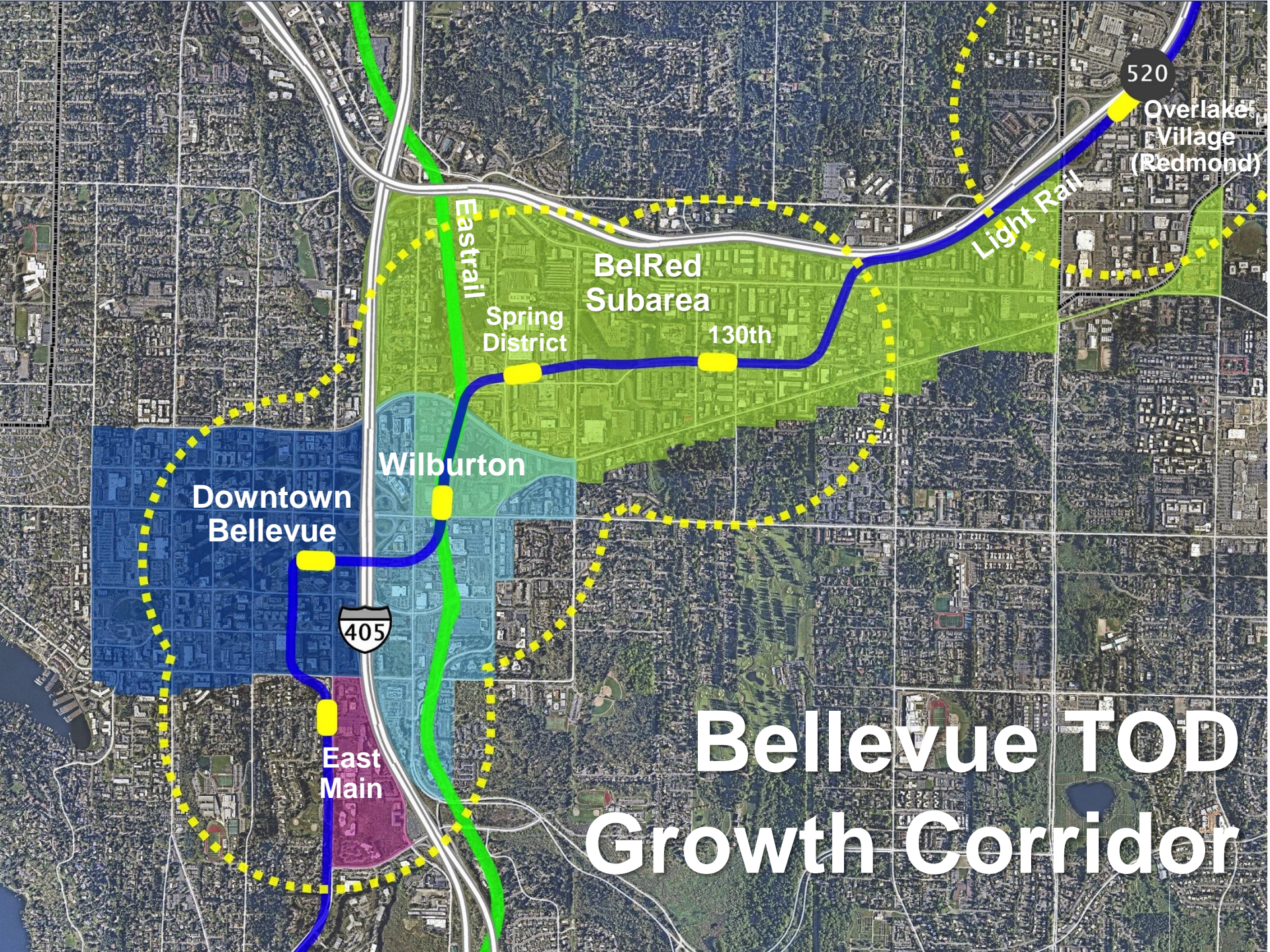
Planning in Bellevue

Looking to the Future

November 13, 2019

Bellevue Growth Strategy





520

Overlake
Village
(Redmond)

Light Rail

BelRed
Subarea

Spring
District

130th

Wilburton

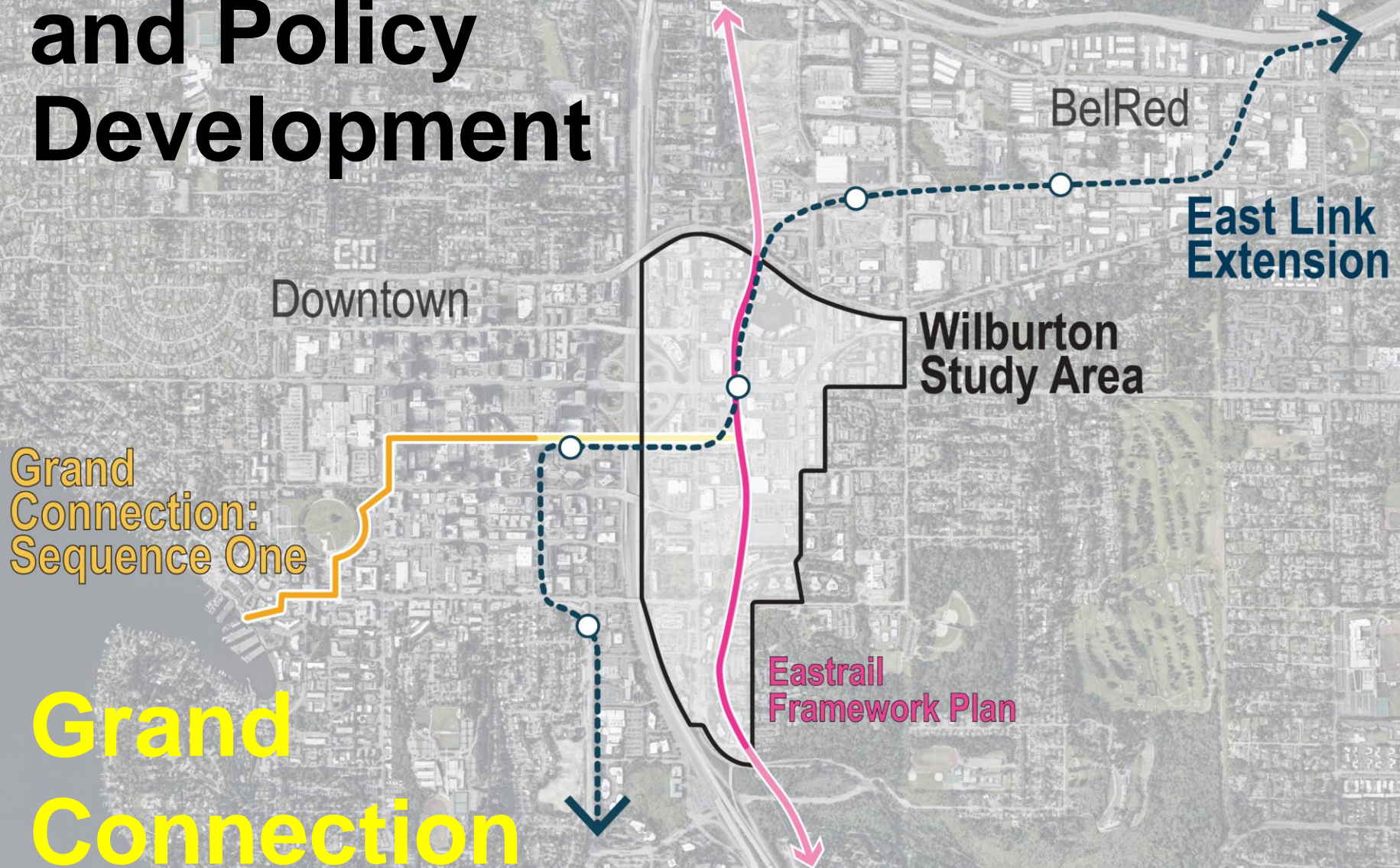
Downtown
Bellevue

405

East
Main

**Bellevue TOD
Growth Corridor**

Wilburton Code and Policy Development



“A people-focused, interactive,
connected experience through
the heart of Bellevue”

Eastrail

Wilburton
Study Area

I-405 Lid
Concept

Downtown
Bellevue

Waterfront

**Grand
Connection**



Wilburton Today



Wilburton Vision





Comprehensive Planning

Looking into the Future – Periodic Plan Updates

November 13, 2019

FORMING our FUTURE

COMPREHENSIVE PLAN UPDATE

Forming Our Future – Again
The next major update to
the Comprehensive Plan

Key Bellevue CPU Objectives

- Reflect local values and priorities
- Address long-term needs of the community, economy and environment
- Strengthen the policy foundation for City decisions, investments and actions
- Meets State and regional requirements
- Make the plan more accessible and usable so that it remains an effective tool



Background prep:

Planning tasks that have to happen before CPU 2023

- Extend VISION 2040 to 2050. **Done by 2020.**
- Update Countywide Planning Policies and jurisdictional Growth Targets. **Ratify both in 2021, and review targets in 2022.**
- Before Growth Targets are completed, King County and cities update the Urban Growth Capacity study, aka Buildable Lands. **Ratify in late 2020.**
- State Office of Financial Management releases its official population growth forecasts. **Released mid-2022.**

Engagement as a Hallmark of the Update



June 30, 2023





Planning Commission Retreat 2019

Working Together

November 13, 2019



Working Together, Topic 1

Roles and responsibilities, and guiding principles on trust, communication and delivering results

- What's working well?
- What needs to be improved or added?
- What issues are obsolete?



Working Together, Topic 2

Norms and values perspective

- What's important to the Commission about engaging with each other, staff, the community and Council?
- How will we hold each other accountable to these?



Working Together, Topic 3

Communication during meetings, considering communication style differences and needs

- What adaptations need to be made so we can better understand and appreciate one another's input? What do you need to be able to hear each other better? To share better?
- What would allow for better flow in the conversation?
- What would allow for improved decision-making?