



City of Bellevue

Public Hearing for Easement Release

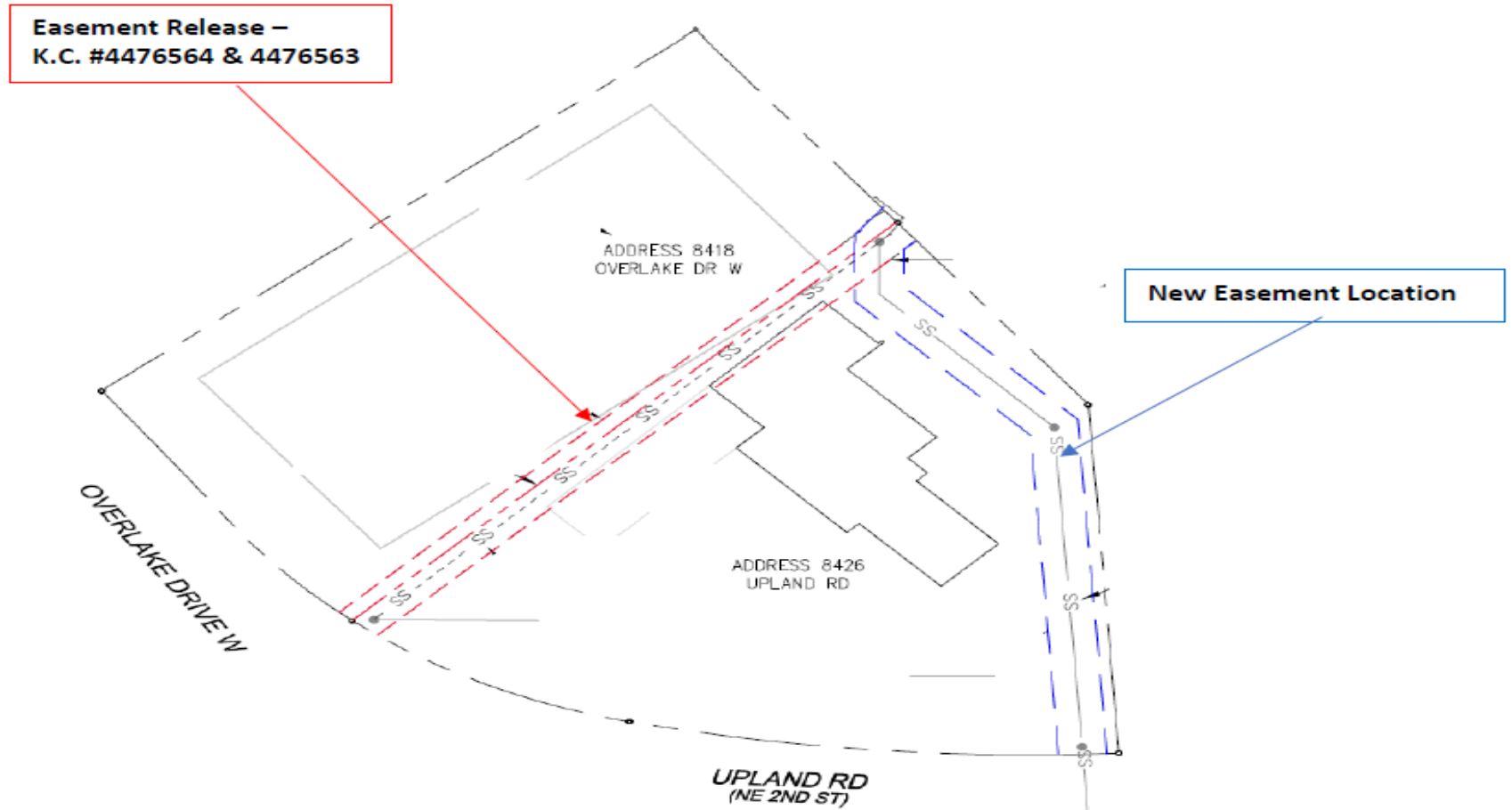
8426 Overlake Drive W, Medina

Ira McDaniel and Patti Ebert| Finance & Asset Management

Sean Wells| Utilities Department

December 2, 2019

Proposed Easement Release





Direction Needed from Council

Authorize the execution of documents necessary to release the surplus sewer easement.

Vicinity Map – 8426 Overlake Dr W.

