



City of Bellevue

King County EMS Levy

EMS Funding Allocations

Fire Chief Jay Hagen | Fire Department

Battalion Chief Dave Beste | Fire Department

Natasha Grossman, CARES | Fire Department

January 21, 2020

AGENDA



Medic One Levy Increased Revenue



CARES Program Assessment



Personnel Enhancement Request



Direction Needed from Council

- Seek Council direction moving forward with:
 - Direct staff to return with an Ordinance appropriating additional budget to include an increase of 7.5 FTEs.

Background

- Opportunity to strategically appropriate new revenue where it can be most effective.
- Increased Revenue of \$1.1 million
 - \$640,000 for Mobile Integrated Health (CARES)
 - \$461,000 for BLS
 - Revenue Backed Funds from King County Levy
 - Dedicated to EMS
 - Available Jan. 1, 2020 - 2025
- Further invest in Bellevue Fire CARES services
- Improve administrative support for basic life-safety response.

Background – BFD Divisions

Division	Personnel Count
Administration	11
Emergency Medical Services	52
Fire Prevention	18
Fire Suppression	166
Fire Training	4
Office of Emergency Management	7
Supply & Maintenance	4

Background

EMS Division
manages:

- ALS resources
- All medical equipment & supplies
- CARES program
- Data management
- Liaison with outside medical stakeholders
- PEER Support



Background

- Opportunity to expand Bellevue Fire CARES services.
 - Reasons for Referral
 - Case Example
 - Opportunities



Background

- All King County EMS providers were required to adopt ESO software as an Electronic Healthcare Record (EHR).
 - Transition from paper to electronic records in October 2017, completed February 2018
 - Improves data sharing and allows for data informed decisions
- Operative IQ
 - Transitioned during Quarter 3 of 2019
 - Paper to electronic tracking of EMS supplies, equipment, and medications



ESO Software Implementation

- 3 Core Advantages of ESO
 - Increased ability and speed of information sharing with stakeholders
 - Provides data informed decisions benefiting patient outcomes
 - Assists with identifying community medical trends (Pandemics/Overdoses)

Operative IQ

- First Areas Implemented
 - Pain Medication Tracking
 - SCBA (Self Contained Breathing Apparatus) Management
- 3 Distinct Advantages
 - Tracking ordering across budgets
 - Reducing workload by drop shipping supplies to fire stations
 - Assists with inventory controls

CARES Expansion – 5.5 FTE's

Add 2.5 FTE's :

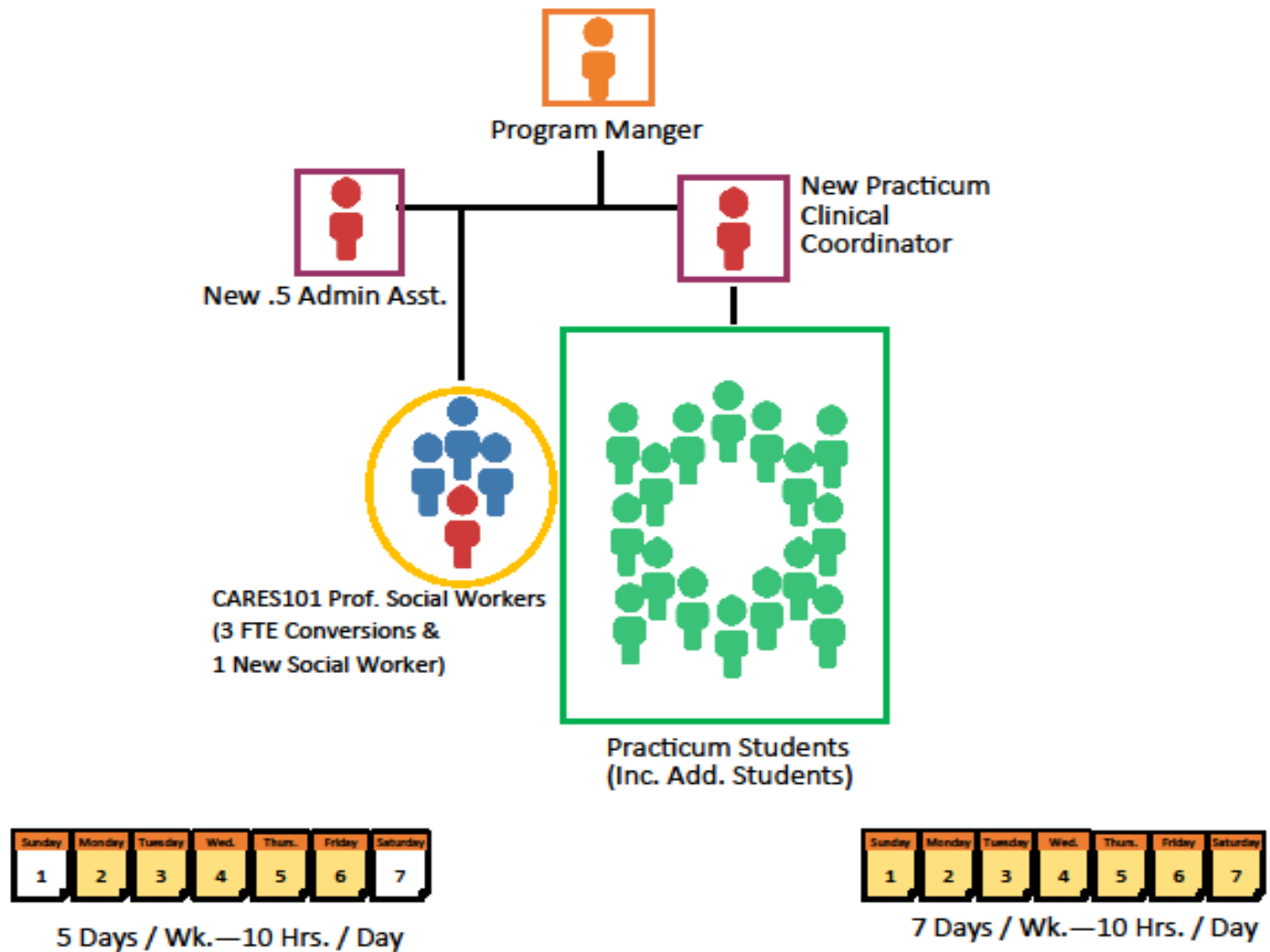
- 1 FTE - new CARES MSW Practicum Clinical Coordinator
- 1 FTE - new CARES101 Masters level Social Worker
- .5 FTE new CARES Admin Asst.

Convert 3 LTE's to FTE's :

- Transition the existing three (3) professional Social Workers that staff the CARES101 unit to FTE's.

Bellevue Fire CARES

Requested Staffing



Basic Life Support 2.0 FTE's

IT Support

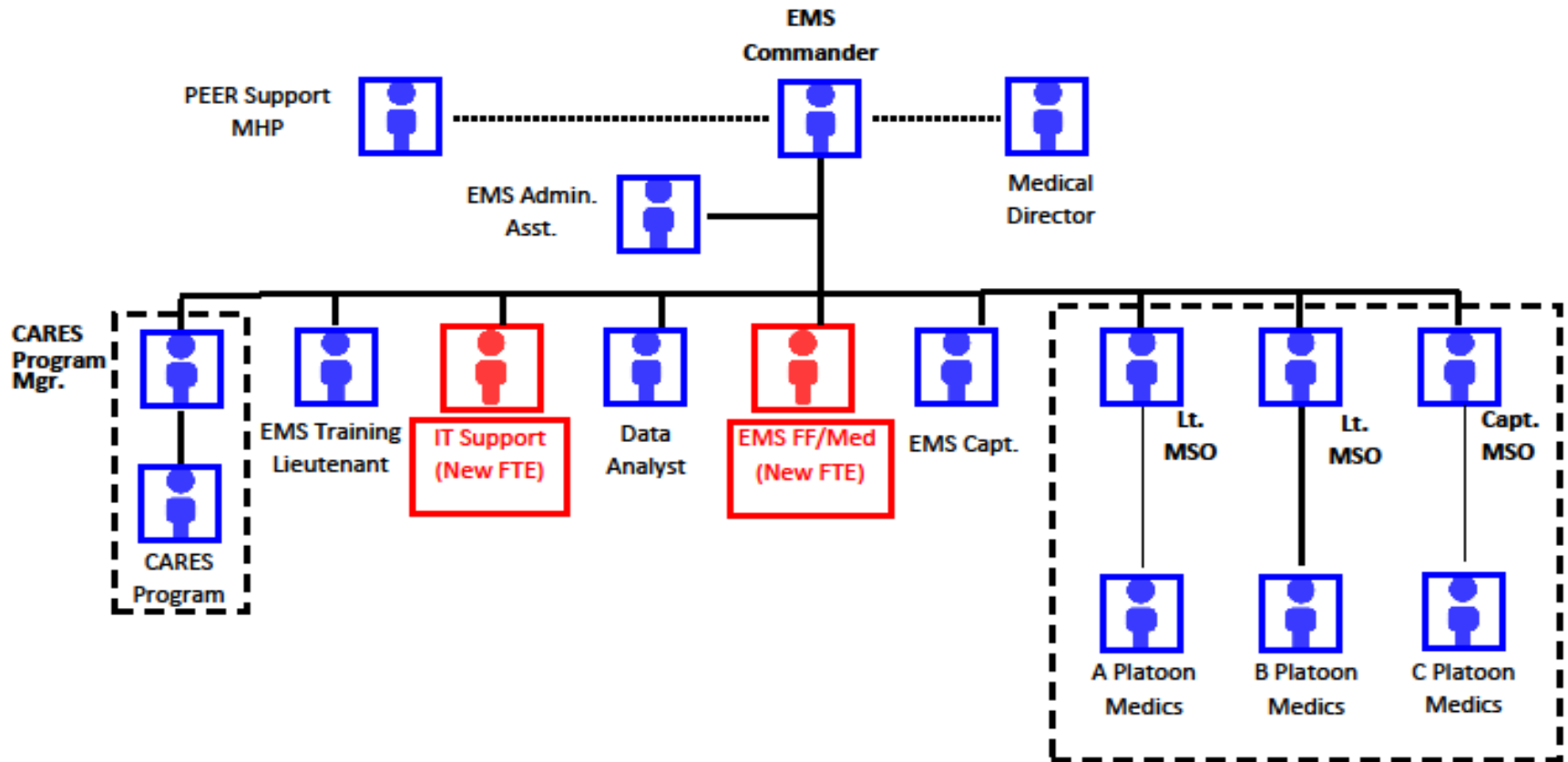
- 1 FTE - new civilian Technology Support Position for the EMS Division.

EMS Firefighter

- 1 FTE - new Firefighter to EMS Division in an administrative assignment position.

EMS Division

Requested Staffing





Direction Needed from Council

- Seek Council direction moving forward with:
 - Direct staff to return with an Ordinance appropriating additional budget to include an increase of 7.5 FTEs.