



Grand Connection

Sequence One Design Guidelines and Standards

Michael Austin, AICP LEED AP-ND

Emil A King, AICP

Community Development

January 22, 2020



Direction

Informational session on
the *Grand Connection*
Sequence One Guidelines
and Standards Update





Agenda

1. Overall Grand Connection Initiative
2. Sequence One Guidelines and Standards Scope
3. Complimentary/Concurrent Projects
4. Draft Process and Schedule
5. Next Steps

Background

An aerial photograph of a city, likely Bellevue, showing a dense urban landscape with numerous buildings, streets, and green spaces. A prominent yellow highlighted path winds through the city, starting from the waterfront on the left, moving inland, and then heading east towards the right side of the frame. A dashed white line follows a similar path but is slightly offset from the yellow path. The overall scene is captured from a high-angle perspective, showing the intricate grid of streets and the mix of residential and commercial buildings.

"A people-focused, interactive, connected experience through the heart of Bellevue"



When Was Planning Commission Last Involved

2018

- **April:** Staff provided the Commission an overview of the Grand Connection vision and highlighted the work associated with the Comprehensive Plan Amendments, Land Use Code updates, and design guidelines.
- **May:** Staff reviewed with the Commission draft policy language and changes to graphics and maps proposed for the Comprehensive Plan Amendments.
- **December:** Amendments to the Comprehensive Plan specific to the Grand Connection were accepted (December 10, Ordinance 6449)

Sequence One

**Grand Connection:
Sequence One**

**Grand Connection:
Sequence Two**

**East Link
Extension**

**Eastrail
Framework Plan**

Downtown

BelRed

Wilburton

100th Ave NE

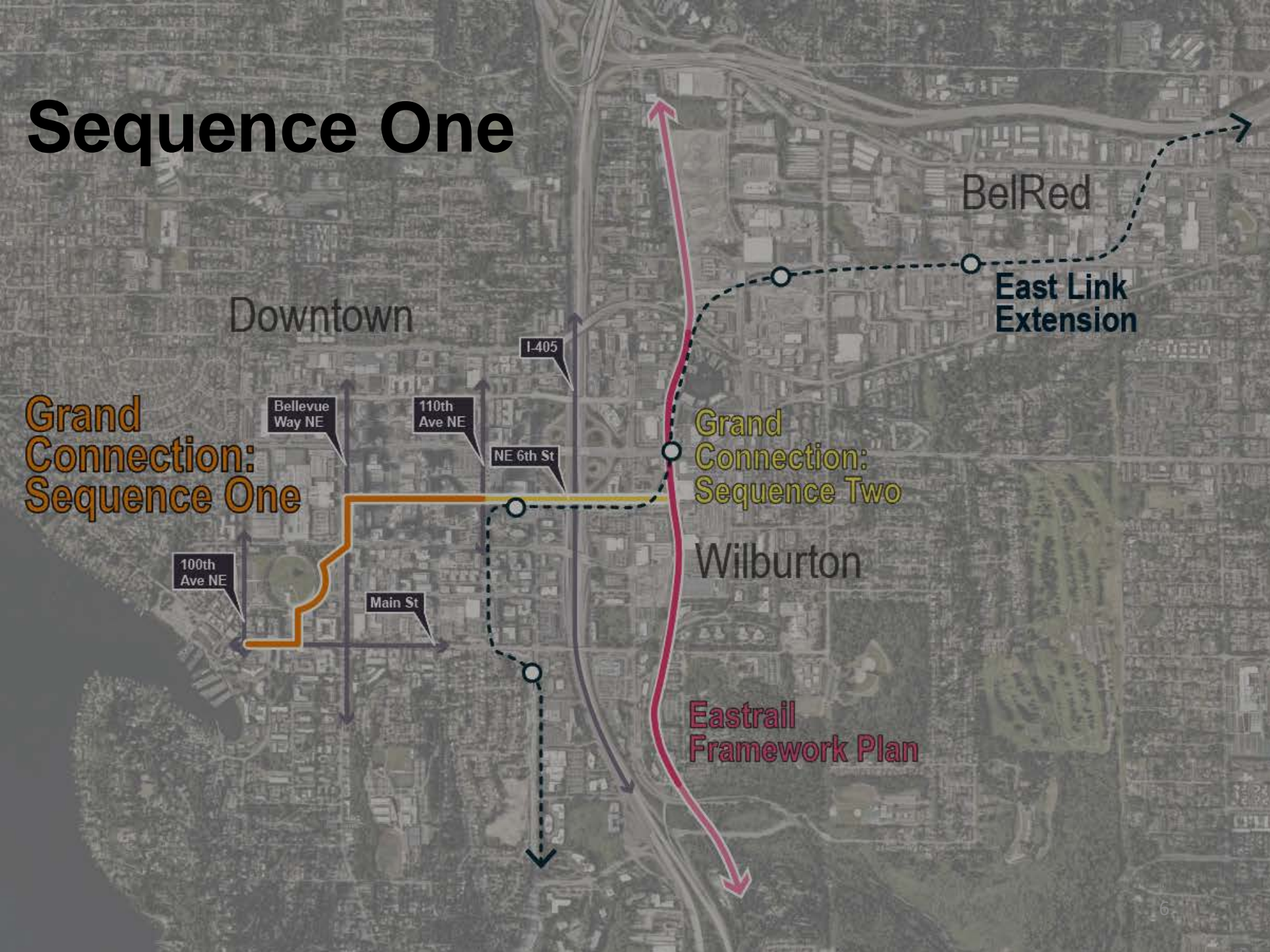
Bellevue Way NE

110th Ave NE

NE 6th St

Main St

I-405



Design Guidelines and Standards



**Grand Connection Framework Plan:
Sequence One and Two**



**Grand Connection
Sample Implementation Strategies**



**Design Guidelines
and Standards**



**Activation
Strategies**



**Intersection
Improvements**



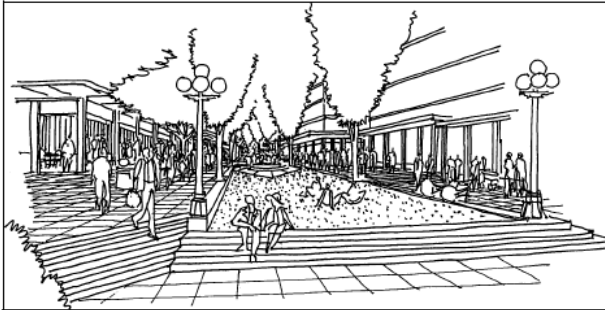


Design Guidelines and Standards

-
- Implementation tool for the goals and values of the Comprehensive Plan
 - Strives to promote excellence in the design of our community
 - Provides common language to enable efficient dialogue and review between the public, City, and Developers for potential/active projects

Design Guidelines and Standards

PEDESTRIAN CORRIDOR AND MAJOR PUBLIC OPEN SPACE



DESIGN GUIDELINES

CITY OF BELLEVUE, WASHINGTON



(Revised 3/00)

Serves Three Groups

- Public
- Developers/Design Teams
- Development Services



MOBILITY



SUSTAINABILITY

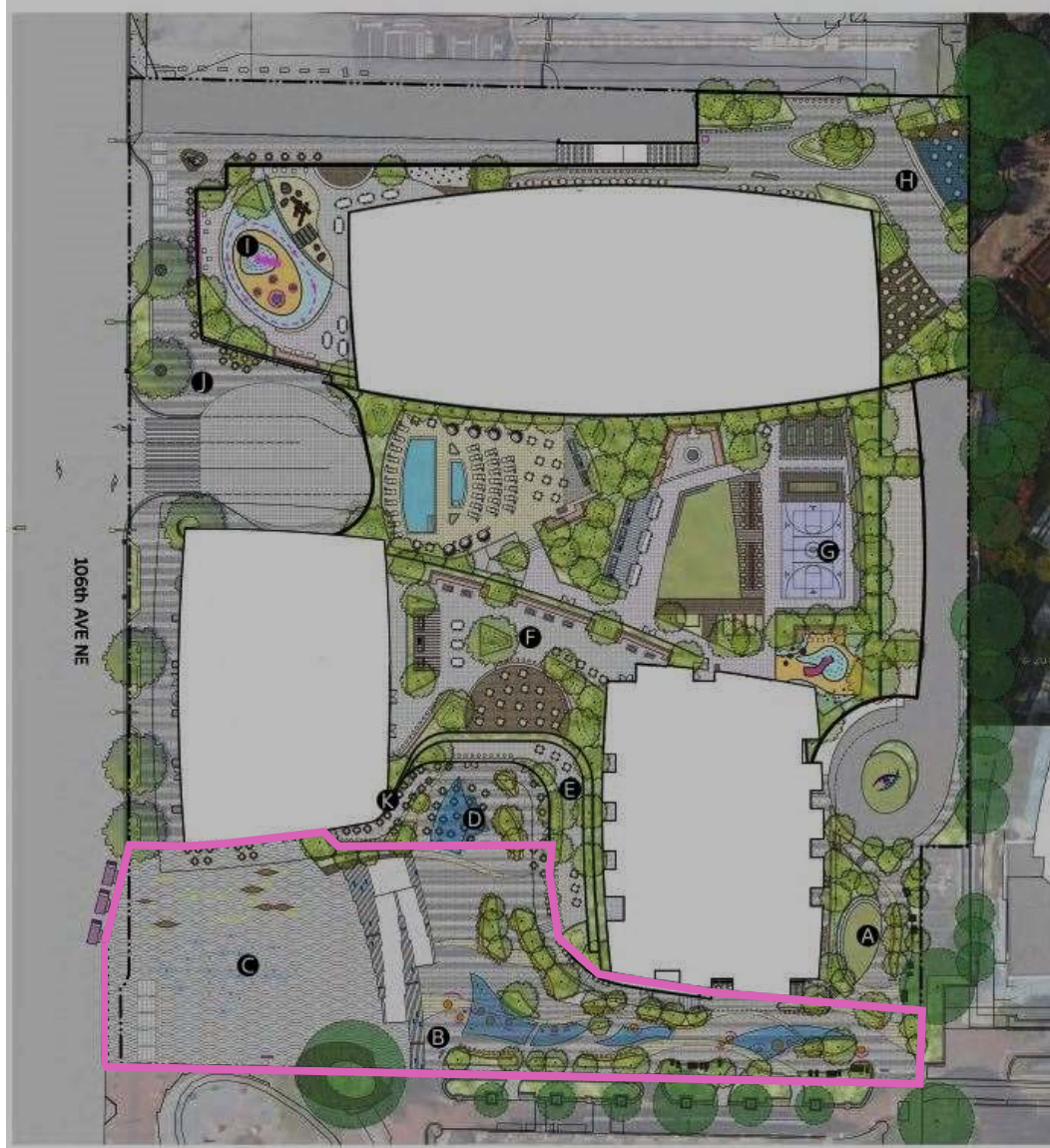


PLACE MAKING



ART

Design Guidelines and Standards



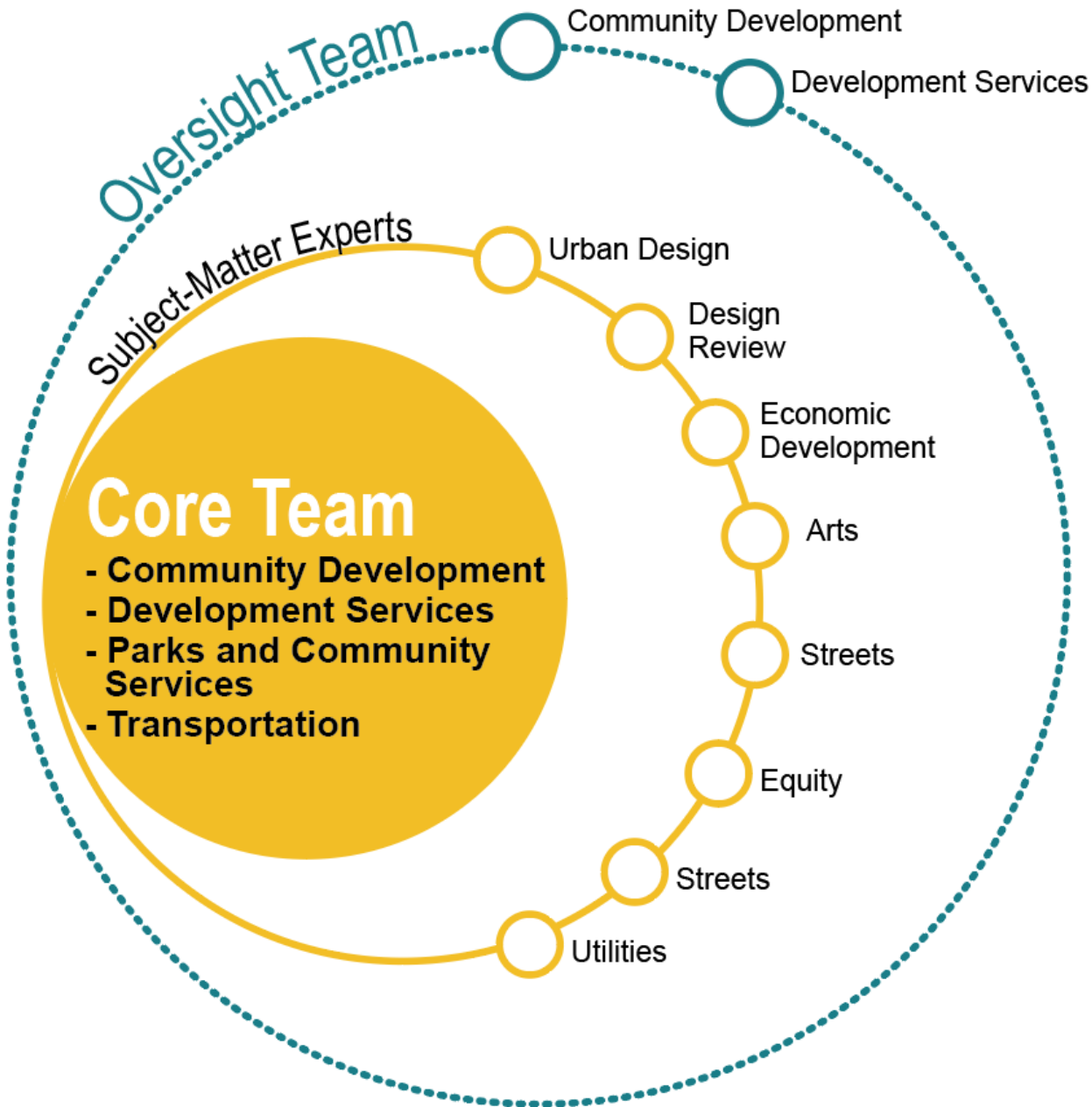
Name: 606 106th Avenue NE
Permit number: 19-104024 LP



Complimentary Projects

- Activation Strategies (Ongoing)
- Bellwether Arts Festival (Ongoing)
- Design Review of Active Projects (Ongoing)
- Wilburton Code and Policy Update (Planned)
- I-405 Freeway Lid Feasibility Study (Planned)
- Grand Connection Wayfinding (Planned)
- Sequence Two Guidelines and Standards (Planned)

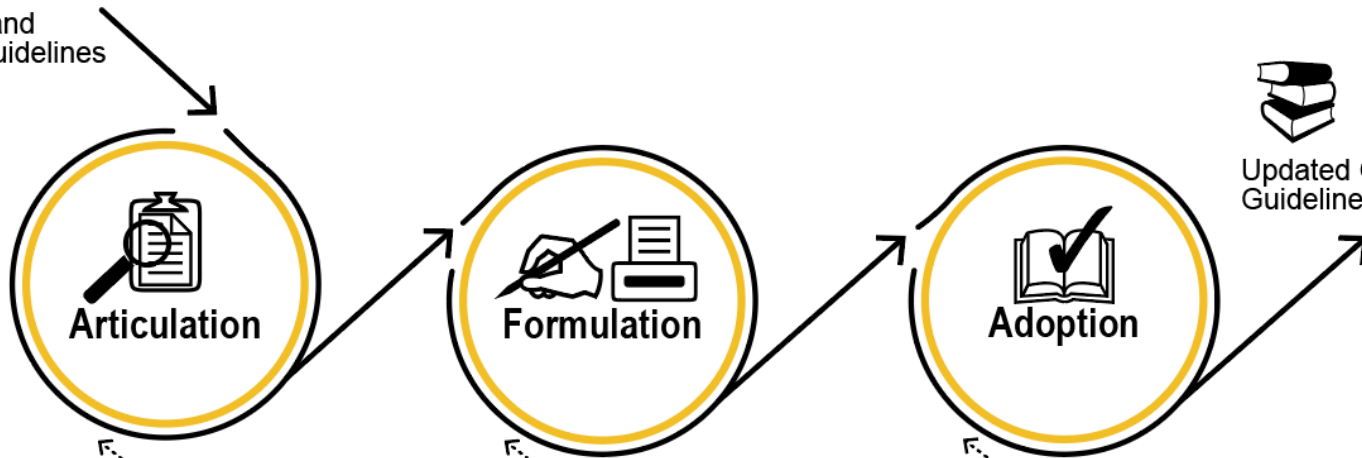
Team Structure



Process



Pedestrian Corridor and
Downtown Design Guidelines
Grand Connection
Sequence One
Framework Plan
Balmori Product



Updated Grand Connection
Guidelines and Standards

Continued Outreach and Engagement

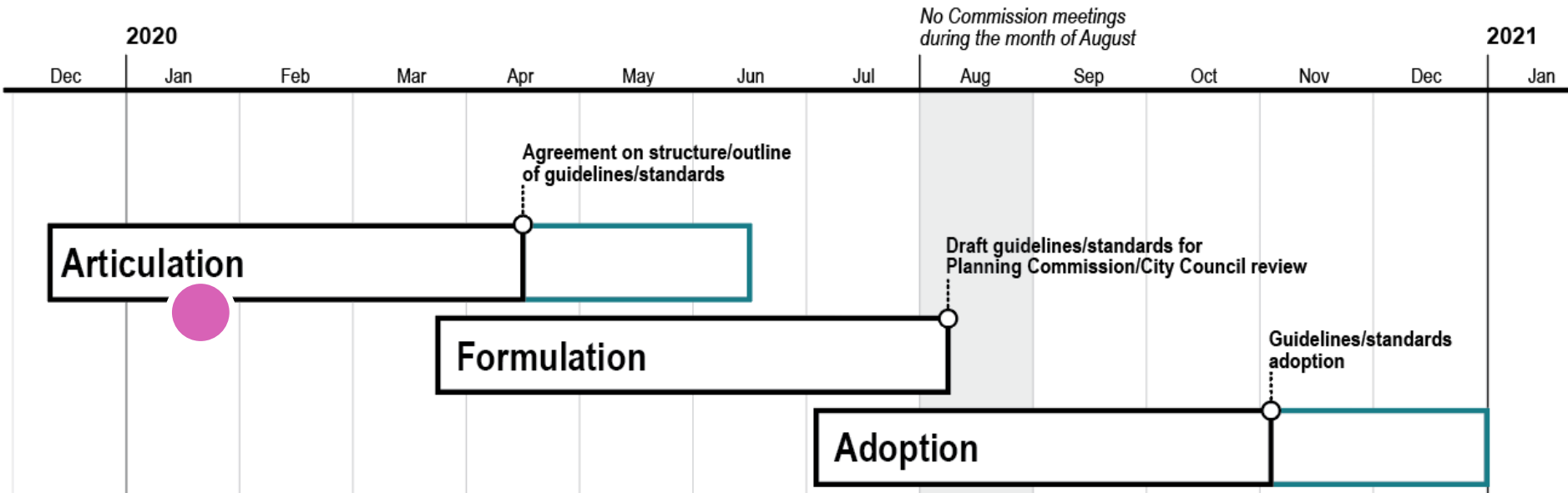


Planning Commission and
City Council Review





Draft Schedule





Next Steps

- Staff audit of existing guidelines and standards
- Staff outline and drafting of guidelines and standards
- Commission work sessions and recommendations

Note: continued outreach and engagement to take place through duration of project



Thank You

Michael Austin, AICP LEED AP-ND

Emil A King, AICP

Community Development

