

Findings of 2019-2020 Human Services Needs Update

Toni Esparza, Assistant Director
Alex O'Reilly, Human Services Manager
Christy Stangland, Human Services Planner
Timothy Ma, Human Services Commission Chair

February 3, 2020



Direction Needed from Council

Information only; no direction required.



History of Human Service

- 1986: Council adopted human services policies; established the Human Services Commission.
- Defined role of City in Human Services: Planner, Facilitator & Funder.



Role of the Human Service Commission



- Review all requests for funding of human services
- Develop recommendations on priorities for the allocation of city resources to meet identified needs
- Pursue regional cooperation in the planning, funding and delivery of human services
- Review and make comment on City actions which may affect the availability of human services in the City
- Conduct studies and make recommendations to the City Council in the area of human services.



Regional Approach

- Collaborate with Human Services staff from East King County Suburban Cities
- Joint Human Services Commission Meetings
- Ensure that Eastside voice is included in considerations for Regional Planning



Background of Needs Update

- Guides the recommendations of Human Services Commission for allocation of 2021-2022 Human Services Fund
- Directs the work of Human Services Division
- Provides information for providers, community groups and regional planning



Methodology

- Phone/online survey
- Community conversations
- Provider surveys
- Consumer surveys

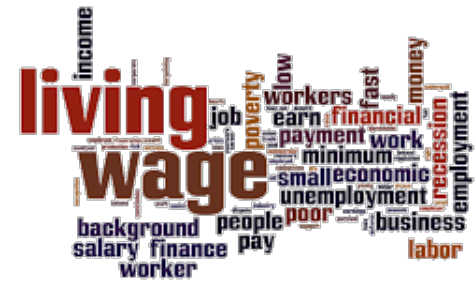


Affordable Housing

- Phone/online survey: 75% rated *lack of affordable housing* as number one community problem.
- Almost one in three (30%) of Bellevue renters are cost burdened.
- 31% of older adult renters pay more than 50% of their income towards rent.



Living Wage



- Phone/online survey: 50% rated *people having jobs that do not pay enough for the basics* as a major or moderate community problem.
- In 2019, minimum wage was \$12.00/hour. A single parent with two children living in Bellevue would need to work 89 hours a week to be self-sufficient.



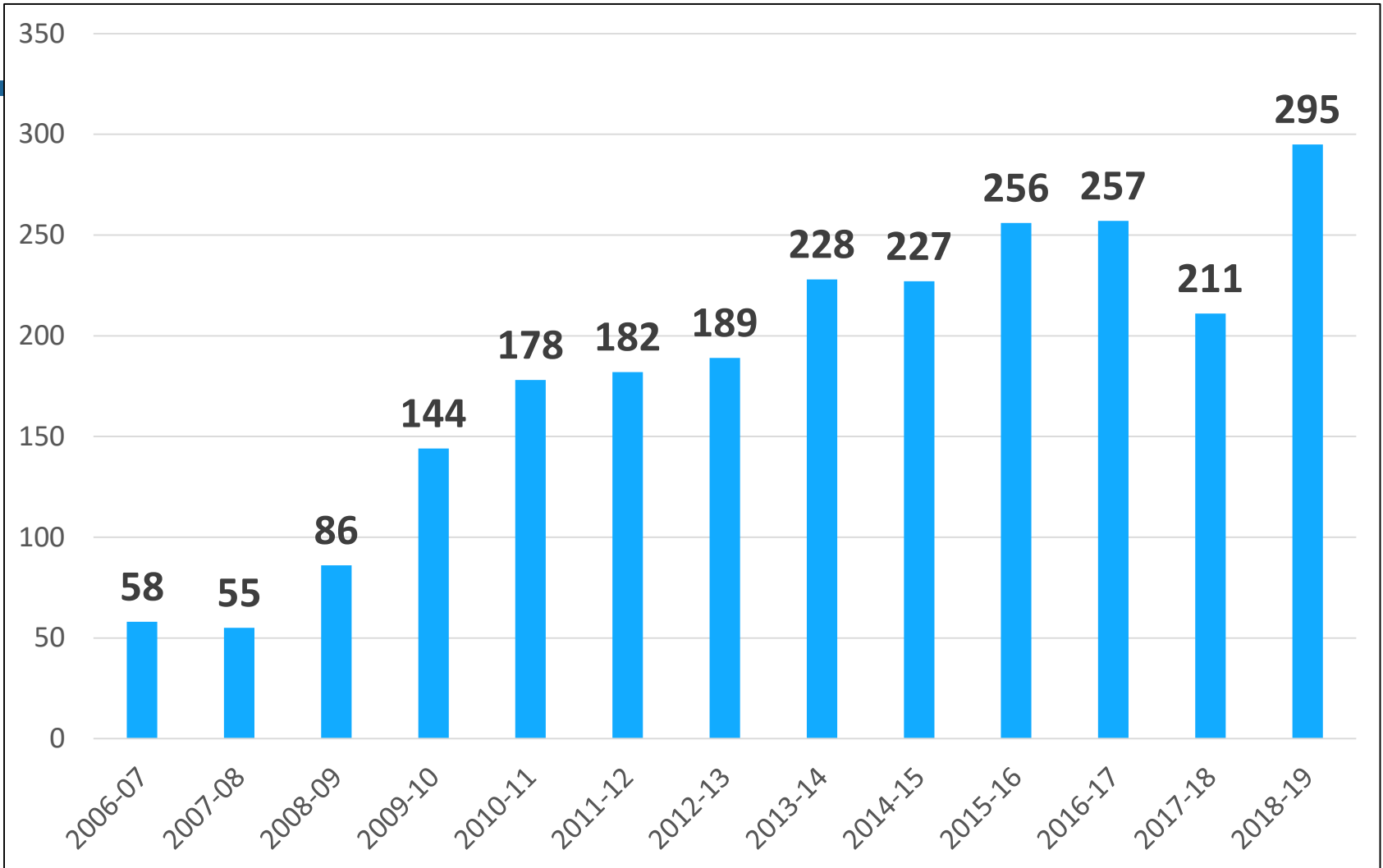


Homelessness

- In 2018, Eastside low-barriers shelters served:
 - Congregation for the Homeless: 603 men
 - Sophia Way: 413 women
 - Catholic Community Services: 348 individuals in family units
 - Friends of Youth: 193 young adults (18-24 years old)



BSD Students Receiving McKinney Vento Services 2006-07 to 2018-19

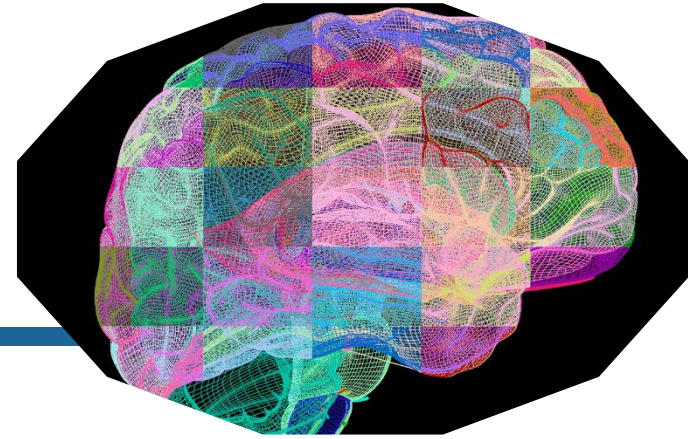


Racial and Ethnic Themes

- Phone/online survey: 25% rated *racial or ethnic discrimination* as a major or moderate community problem.
- Provider's survey: More than half reported increased fear related to immigration status was a barrier to clients accessing services.



Behavior health and substance use



- Provider's survey: 67% reported clients cannot access needed mental health care.
- 2018 BSD youth contemplating suicide:
 - 18% of 8th graders
 - 21% of 10th graders
 - 20% of 12th graders
- Increase in adults and youth with substance use issues (methamphetamines and opioids).

Access to Transportation



- Provider's survey: 62% reported that transportation was a barrier to accessing services for their clients.
- Phone/online survey: 40% rated *inadequate public transportation* as a community problem.
- Bellevue Aging Adult Recreation Plan Survey: 56% reported that transportation was a challenge to participating in social and/or recreation activities.

Next Steps



- Continued coordination between departments and plans
- Funding application for Human Services Fund is available mid-March
- Completed non-profit applications due in mid-April
- Recommendations brought to Council Fall 2020



Direction Needed from Council

Information only; no direction required.

