



City of Bellevue

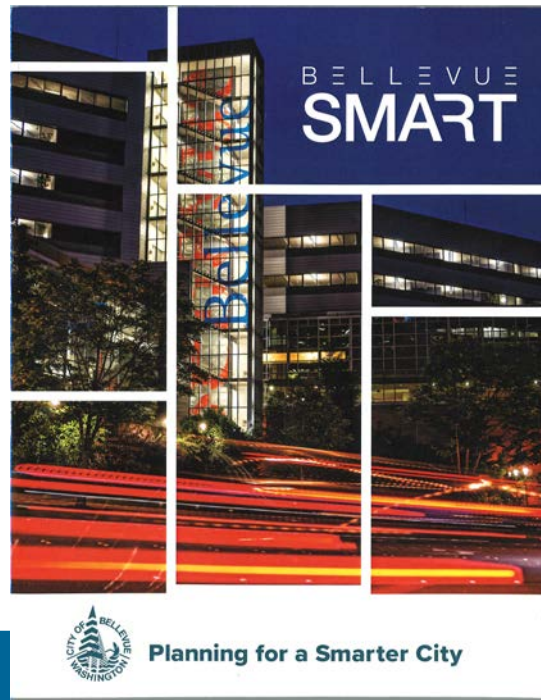
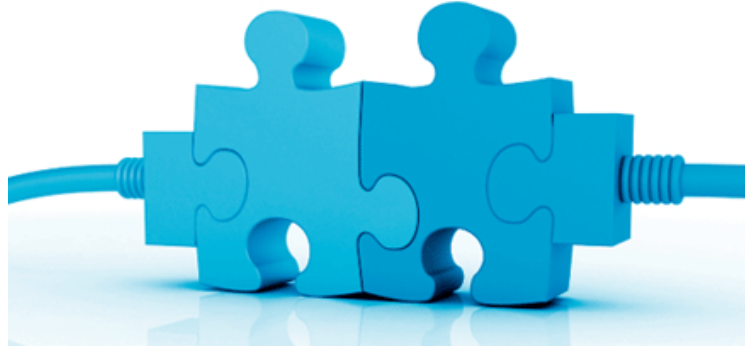
Traffic Management

Bellevue Integration Map for Incident Management

Mark Poch & Fred Liang | Transportation Department
February 3, 2020

What's been achieved?

Integration:



PUBLIC SAFETY

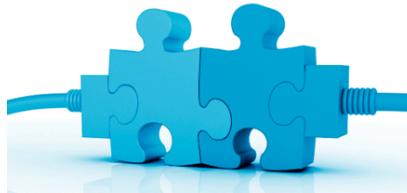


TRANSPORTATION



CONNECTIVITY

What's been achieved?



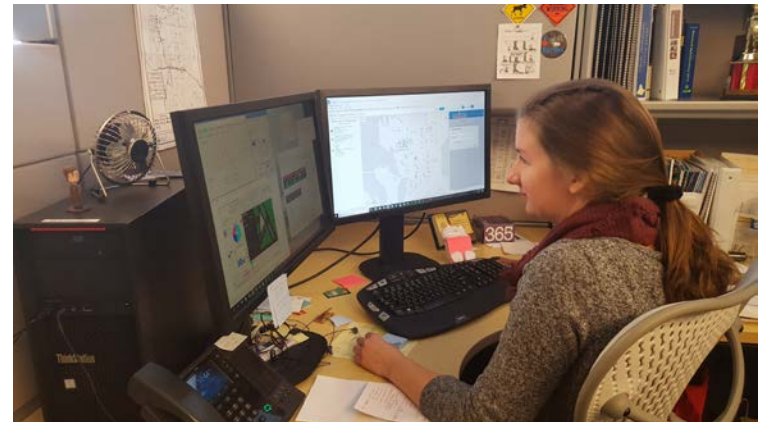
Why integrate?



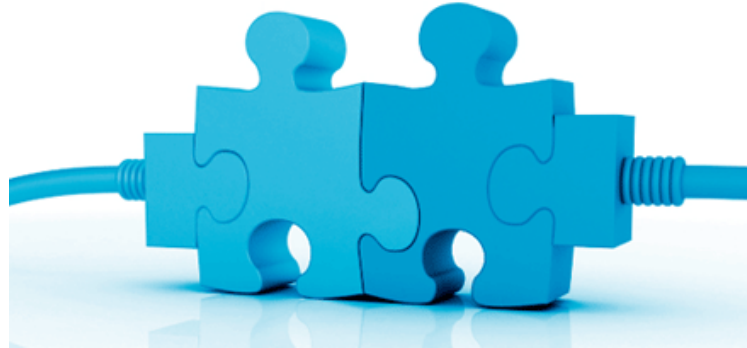
Transportation



Why integrate?



What's the benefit?



- Collision/Incident information in real time
- Leverage our Smart Mobility systems
- Collision/Incident video archiving
- Recovery of damages to city property
- Building on the achievement
- Exemplify and inspire Bellevue's core values
 - Exceptional public service
 - Innovation

Nationally Recognized



- Selected from 46 award applicants
- Best Use of Management Data to Improve Transportation Systems Management and Operations (TSMO)

What's it look like?

cobgis.maps.arcgis.com/apps/opdsdashboard/index.html#/55448ce5d1fb4ce8b607fa194d670bca

Norcom Events Integration Map [TEST] City of Bellevue

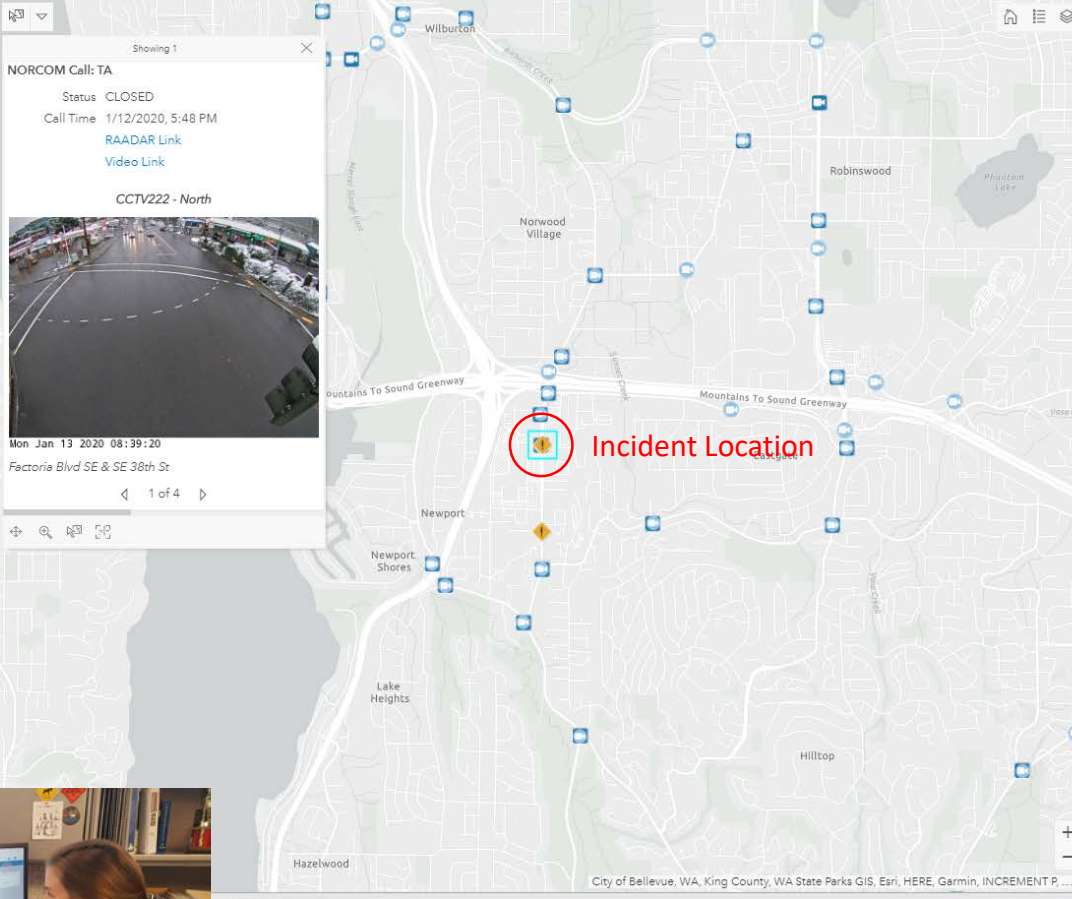
Call Type: TA/MVA All Status: Active/Pending Closed All Time Range: 2 hrs 6 hrs 24 hrs 5 days

Bellevue 911 Responses

(Most Recent First)

- ACTIVE - 1/13/2020, 8:23 AM
MVA - Aid Emergency - BEFD
Units Assigned: E105, A101
RAADAR Link
- ACTIVE - 1/13/2020, 8:22 AM
TA - BLVPD
Units Assigned: 7B24, 7B42
RAADAR Link
- CLOSED - 1/13/2020, 7:59 AM
MVA - Aid Emergency - BEFD
Units Assigned: L107
RAADAR Link
- CLOSED - 1/12/2020, 5:48 PM
TA - BLVPD
Units Assigned: 3B
RAADAR Link
- CLOSED - 1/12/2020, 1:11 PM
TA - BLVPD
Units Assigned:
RAADAR Link
- CLOSED - 1/12/2020, 10:08 AM
MVA - Aid Emergency - BEFD
Units Assigned: E109
RAADAR Link
- CLOSED - 1/12/2020, 10:05 AM
TA - BLVPD
Units Assigned: 7B24
RAADAR Link
- CLOSED - 1/12/2020, 9:02 AM
TA - BLVPD
Units Assigned: 1B1
RAADAR Link

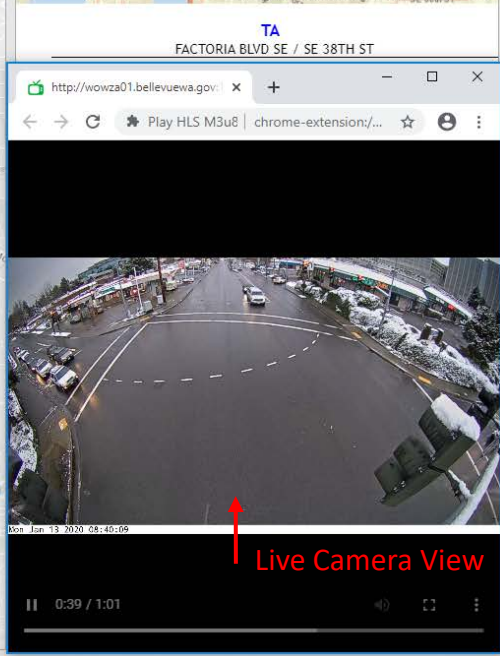
Incident List



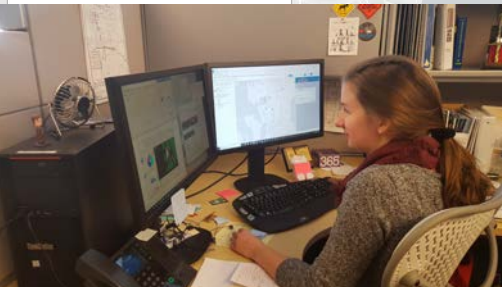
Incident Location



911 Communication Feed



Live Camera View





City of Bellevue

Traffic Management

Bellevue Integration Map for Incident Management

Mark Poch & Fred Liang | Transportation Department
February 3, 2020