

# University of Washington Livable City Year

**2018-19 PARTNERSHIP RETROSPECTIVE**

Nancy LaCombe, Assistant Director  
Danielle Verwahren, Management Analyst  
*City Manager's Office*

February 10, 2020



City of Bellevue

# Direction Needed from Council

---

## Information Only

This presentation will provide an overview of Bellevue's award-winning partnership with the University of Washington Livable City Year program, highlighting the partnership's outcomes and ongoing impact.



# Agenda

1. Background
2. Projects
3. Partnership Scale
4. Project Impacts



# Background

*One year. One city. Dozens of UW faculty and hundreds of students. Working together to catalyze livability.*

The City was selected to partner with the Livable City Year over the 2018-19 academic year.



# Projects

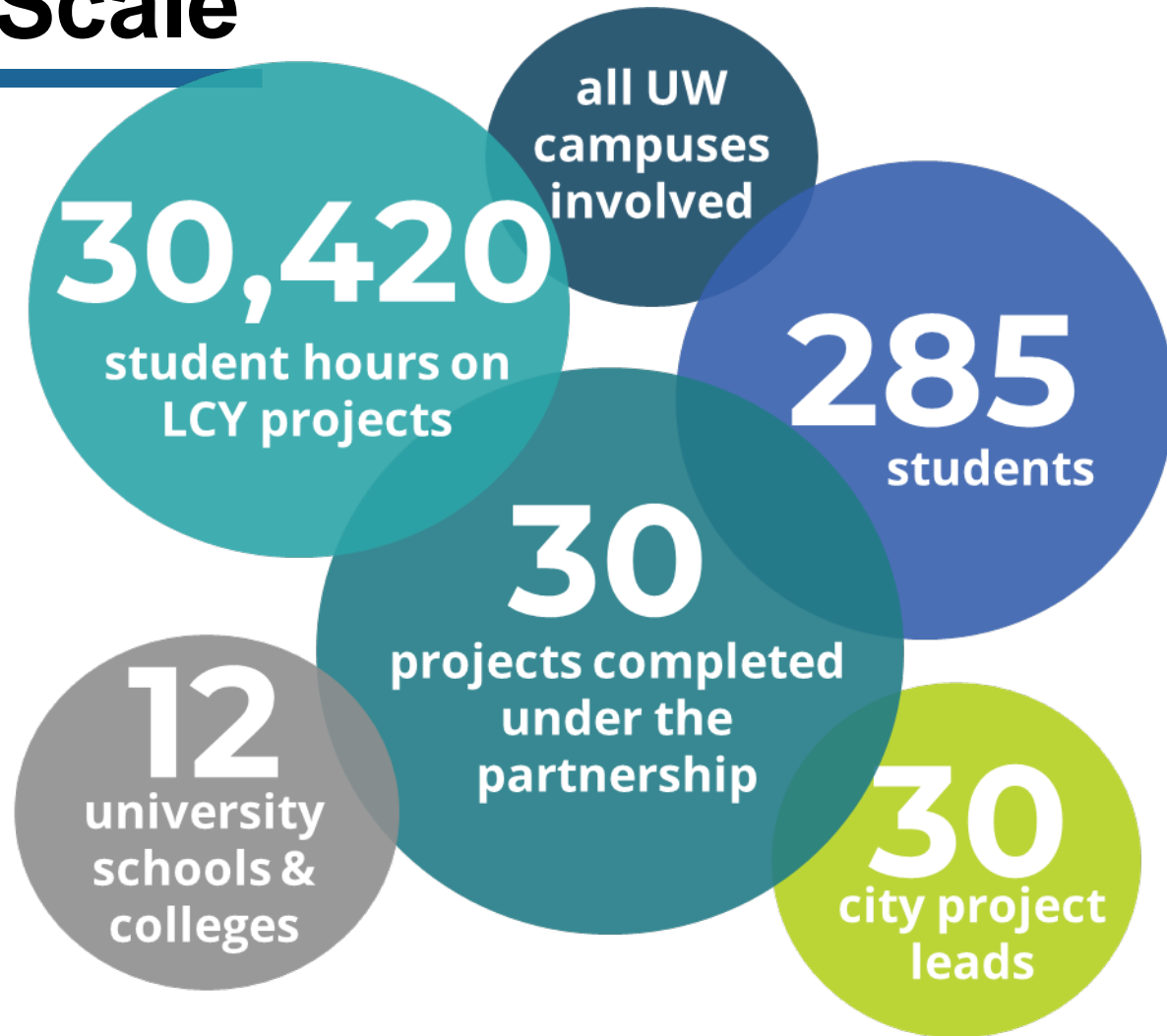
- Proposed more than 50 projects
- Matched the program max of 30 projects
- Projects support Council Vision and Priorities as well as other City plans





# Partnership Scale

Livable City Year has been described as a flash mob of engagement.

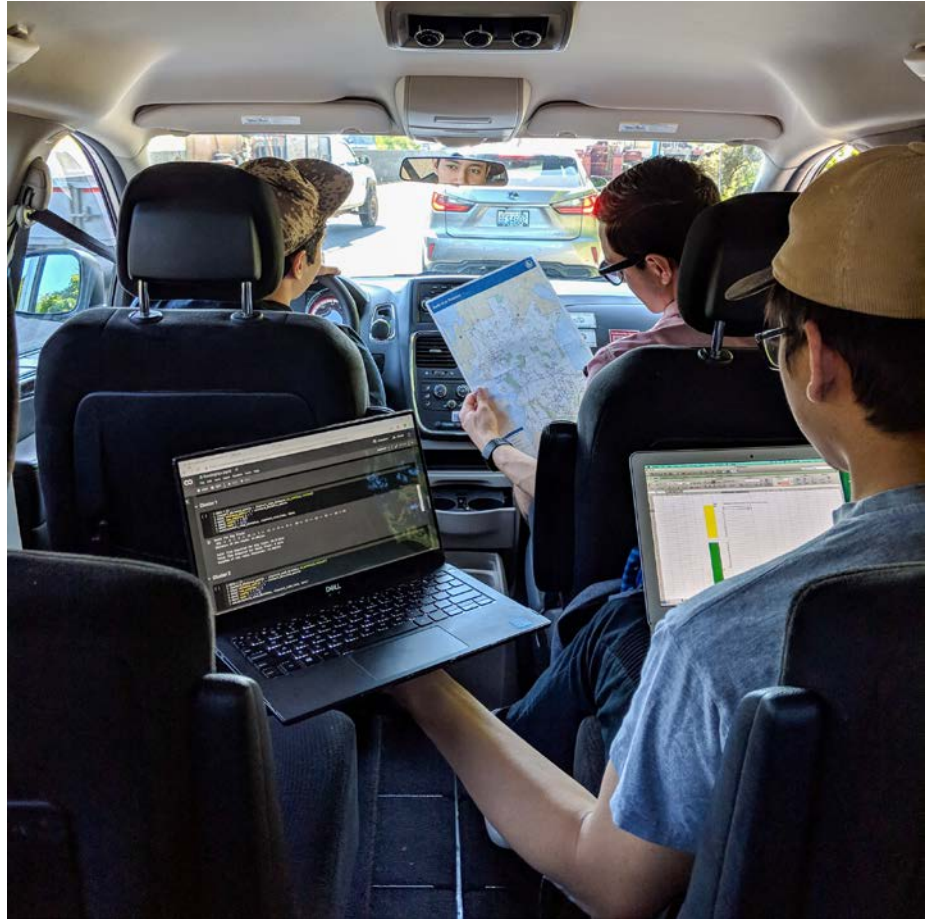


# Community Risk Reduction





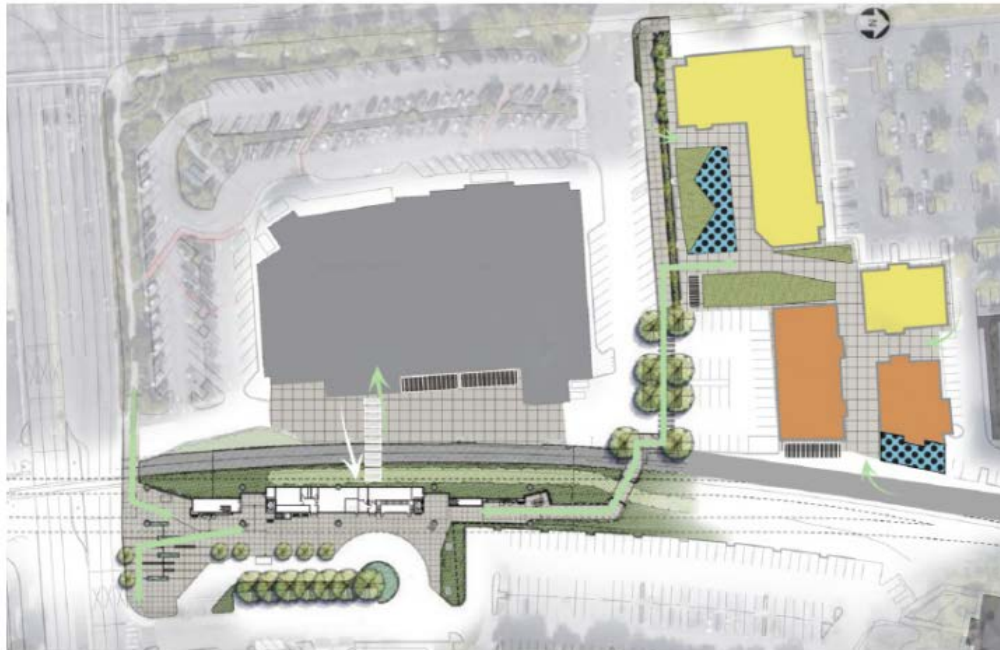
# Winter Weather Route Optimization





# Trail-oriented Development

SE 5TH STREET INTERSECTION



# Neighborhood Engagement



**PRIZES** *Support/Support w/ local vendors/incentives*

**Brainstorm**

Criteria:

- call it a party or ~~the~~ gathering rather than a meeting
- online community ~~the~~ meetings (Zoom/Slack)
- Community meetings at restaurants/ cafe
- Memes - *Smart city*
- Art shows - *reincraft for Bellevue*
- Game → *on phone but it shows new buildings (when you point camera in their direction)*  
→ Pokemon Go idea
- Scavenger Hunt (like the random painted rock ideas)
- Community video contest i.e. lip sync challenge
- coffee on Bellevue *we will buy you a cup of coffee for.... partner of local stores*

**Bite of Bellevue** *Solar Panels Nuclear Fusion!*  
Food Trucks - *AI i.e. sim for Bellevue*  
↳ *Culturally specific*

**Block Party** *Self-driving car/riding bike*  
↳ *interactive map*

**Community Art Project** *Rebuild*  
↳ *rebuilds* **ASSET MAP** *Under: Park*

**Community Event** w/ *Goi agencies* *to discuss*

**Plan-a-thon** (like Hack-a-thon) w/ Prize

**Bellevue: The Movie**  
↳ *Video Game* *Geocaching*

**Opinion Buttons** w/ iPad *!! !!*

**Public Space Games** *Smartwatch app*  
**Interactive Projection** *Onscape projection: window*



# Economic Development

## Great Places Where You Want To Be

### Achieving Human Potential



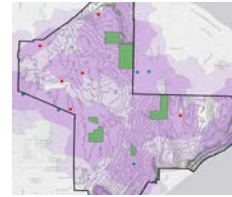
Trail-oriented  
Development



Startup 425  
Planning



Marketing Bellevue  
Parks



NEP Health  
Assessment

Improving  
Walkability



Parks Business  
Intelligence

Food  
Trucks



Safe Parking Lots



Implicit Bias in  
Prosecution





# High Quality Built & Natural Environment



EcoDistrict  
Evaluation



Neighborhood Area  
Planning Profiles

Civic Center  
Vision



Transient Rentals  
Analysis

Image  
Catalog

Smart  
Buildings

Neighborhood  
Planning Engagement



Health Impact  
Assessment



Climate Change  
Vulnerability

Small Business  
Incubator

Future of Wetland  
Design





# High Performance Government



User-Centered  
Website Design



Planning for South  
Mini City Hall



Winter Weather  
Route Optimization

LEP Emergency  
Communications

UAS Technology  
Applications

Public-Private  
Partnerships



Language Access  
Mobile Resources

Budget Book

Multi-family Housing  
Engagement



Community  
Resiliency Outreach



# Outstanding Community Partner

“The City of Bellevue is an absolute example of service-minded innovation.”

- Courtney Griesel, EPIC-N board member



# Direction Needed from Council

---

## Information Only

This presentation will provide an overview of Bellevue's award-winning partnership with the University of Washington Livable City Year program, highlighting the partnership's outcomes and ongoing impact.

