

# Environmental Stewardship Plan

---

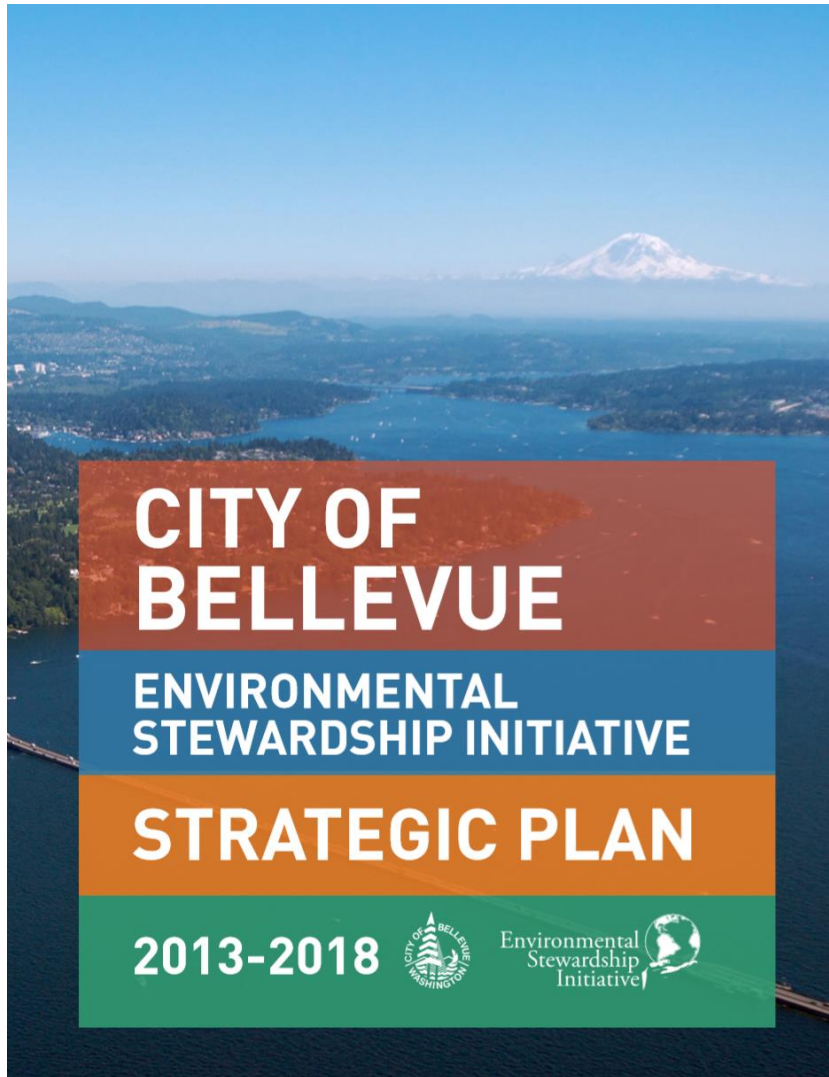


**Planning Commission**

**Jennifer Ewing, Environmental Stewardship  
Program Manager**

February 26, 2020

# Building on a Foundation

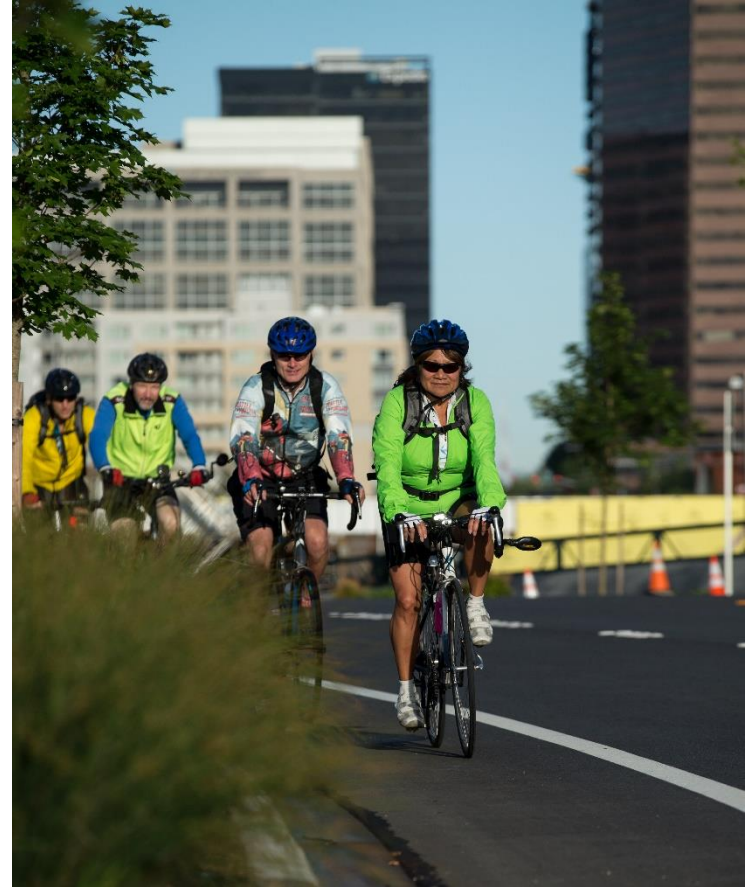


- Environmental Stewardship Initiative (ESI) Started in 2007
- Mayors Climate Protection Agreement
- Joined King County in Cities Climate Collaboration (K4C)
- Directed by Council to lead by example



# Council Direction for Boards and Commissions

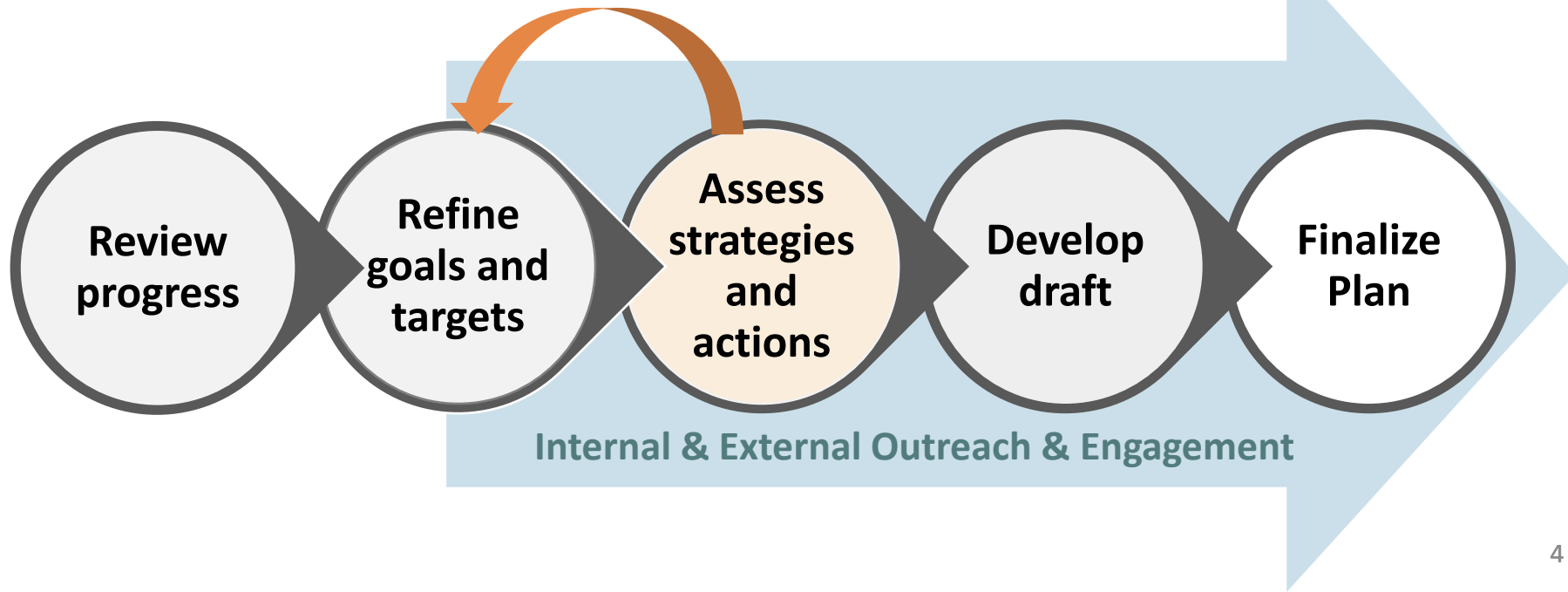
- Engage with all Boards and Commissions  
(Nov 12 2019 Council Study Session)
- Boards and Commissions Role:
  - Provide input on possible strategies and actions for the plan
  - No formal action is needed



# Environmental Stewardship Plan Update Process

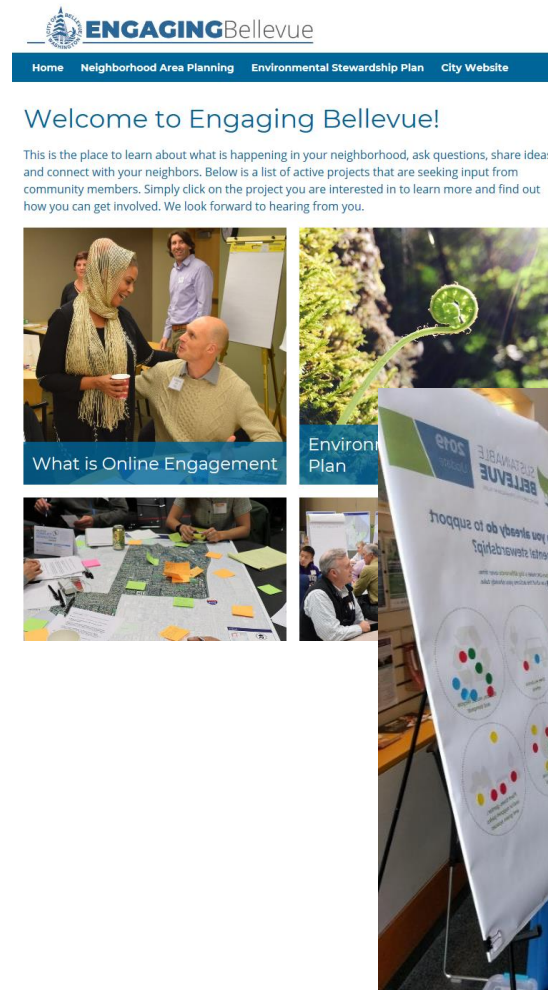
City Council Vision Priority #11

Review progress of ESI and analyze additional steps the City may take to achieve its environmental goals.





# Public Engagement

- **87%** say that climate change is an important issue to them personally
- **77%** want Bellevue to be ambitious
- Key issues:
  - Trees
  - Climate
  - Parks / Green Spaces
  - Water/Stormwater
  - Mobility Options
- Considerations:
  - Leadership
  - Cost / benefits



# Community Targets

	 <b>PROGRESS SINCE 2011</b>	 <b>2050 TARGETS</b>
<b>MATERIALS MGMT &amp; WASTE</b>	40% Recycling Rate	Zero Waste
<b>MOBILITY &amp; LAND USE</b>	65% Drive Alone Rate (Residents) 2% EV Ownership 3% VMT/Capita Reduction 63% Jobs & 42% Housing within ¼ mile of freq. transit station	45% Drive Alone Rate 50% EV Ownership 50% VMT/Capita Reduction 85% Jobs & 65% Housing within ¼ mile of freq. transit station ←
<b>ENERGY</b>	40% Renewable Energy 5% Energy Use Reduction	100% Renewable Energy 30% Energy Use Reduction ←
<b>NATURAL SYSTEMS</b>	37% Tree Canopy Cover 73% 1/3 mile to Park Access	40% Tree Canopy Cover ← 100% 1/3 mile to Park Access
<b>CLIMATE CHANGE</b>	9% GHG Reduction (22% per capita reduction)	80% GHG Reduction ←





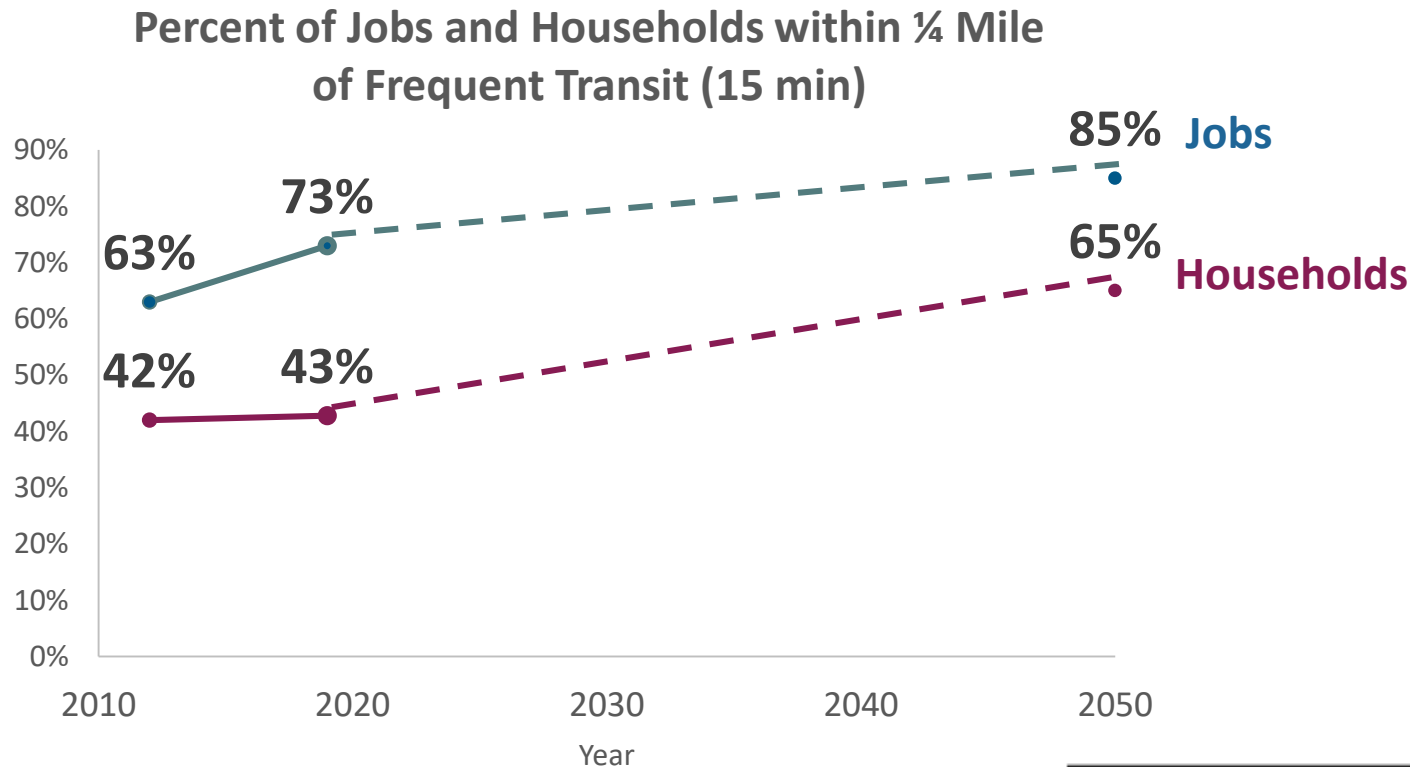
# Questions

---



# Mobility and Land Use

## Increase Housing in Proximity to Frequent Transit



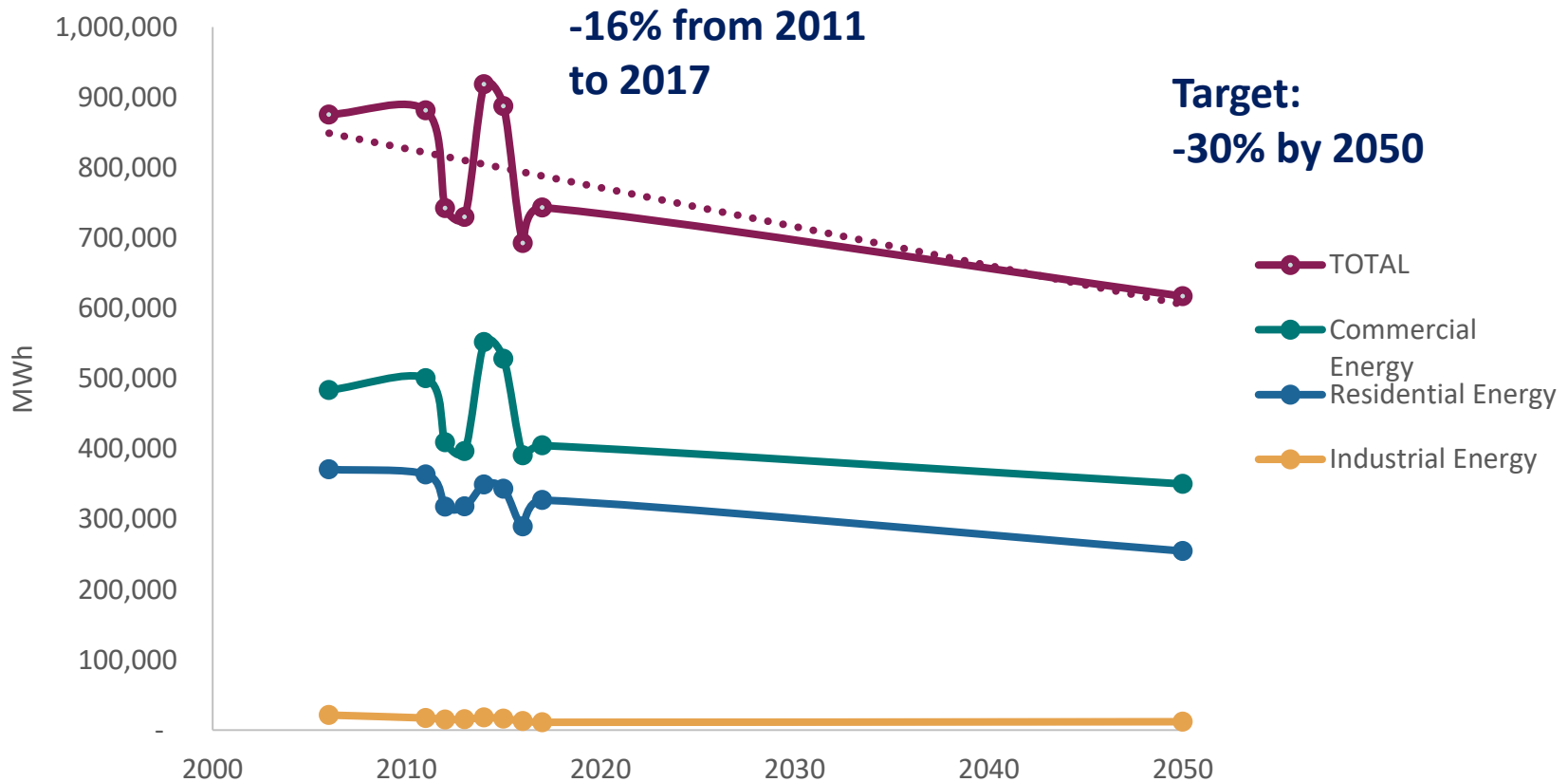
Funding Scenario	2030 Households Projection				Total HH
	Quarter-Mile		Half-Mile		
	15-min	30-min	15-min	30-min	
Growing	58.1%	76.6%	75.4%	91.3%	70,300
Stable	57.7%	68.5%	75.3%	85.4%	
Reduced	57.8%	57.8%	75.3%	75.5%	



# Energy

## Decrease energy use in buildings

### Total Electricity Use in Bellevue by Year

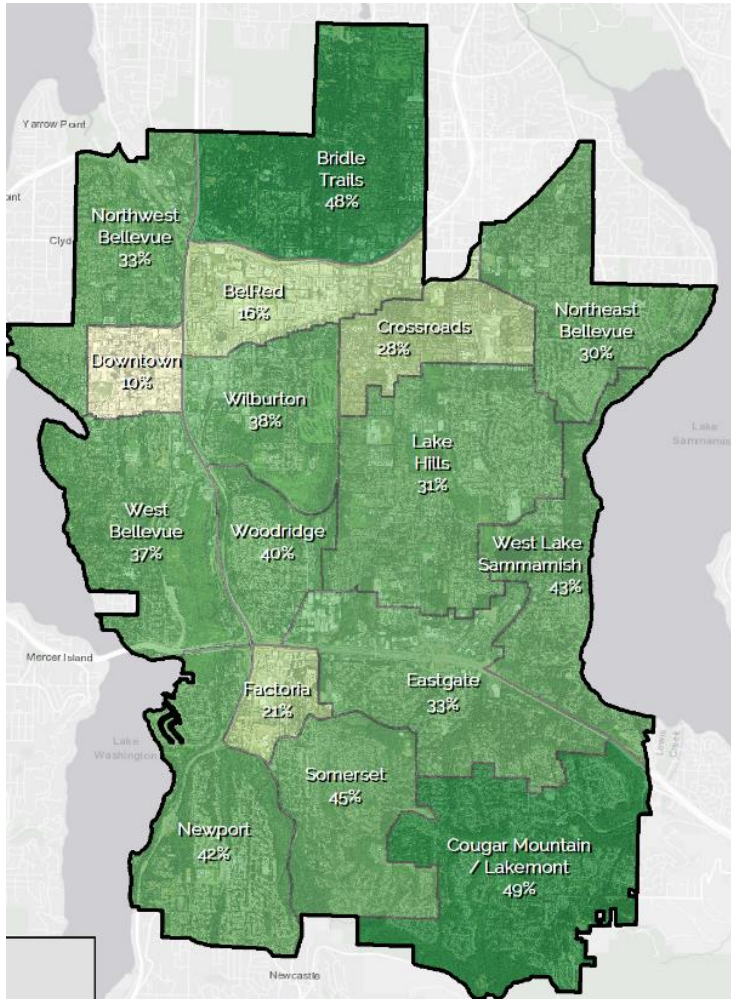


# Natural Systems

## Increase tree canopy

**2017 Tree Canopy: 37%**

**2050 Target Tree Canopy: 40%**

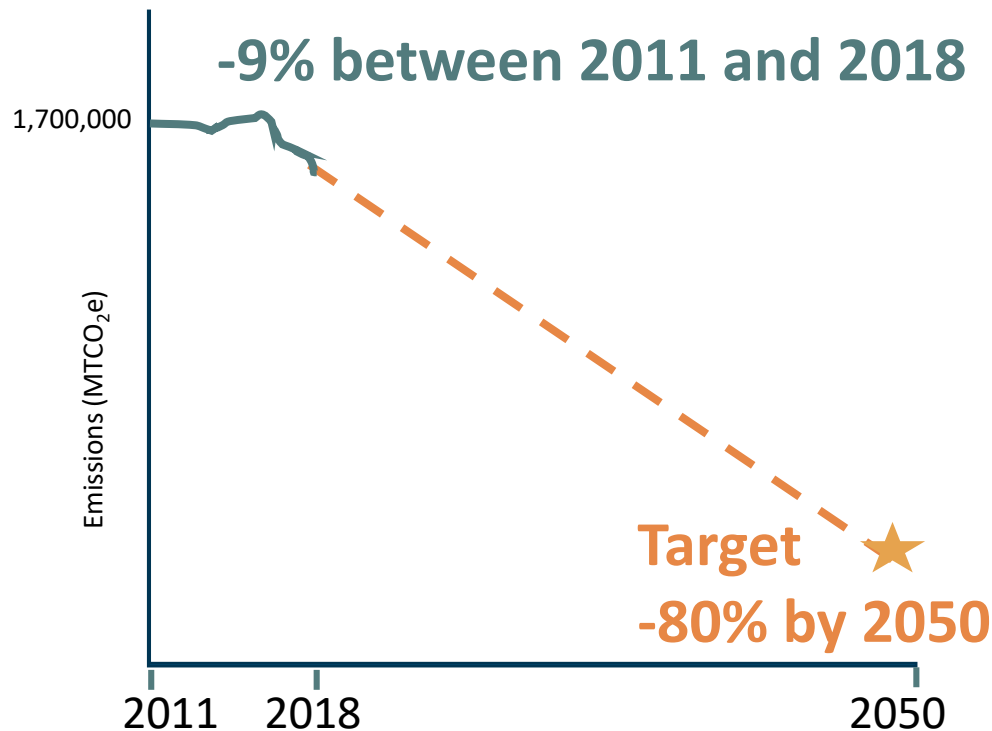


	Total Area	Urban Tree Canopy		
	Total Acres	Canopy Acres	Canopy %	Distribution
<b>Downtown</b>	387	39	10%	0%
<b>Commercial &amp; Mixed Use</b>	2,747	566	21%	7%
<b>Industrial</b>	220	58	26%	1%
<b>Parks</b>	2,544	1,626	64%	20%
<b>Suburban Residential</b>	14,131	5,151	36%	65%
<b>Urban Residential</b>	1,550	520	34%	7%
<b>Total</b>	21,580	7,961	37%	100%

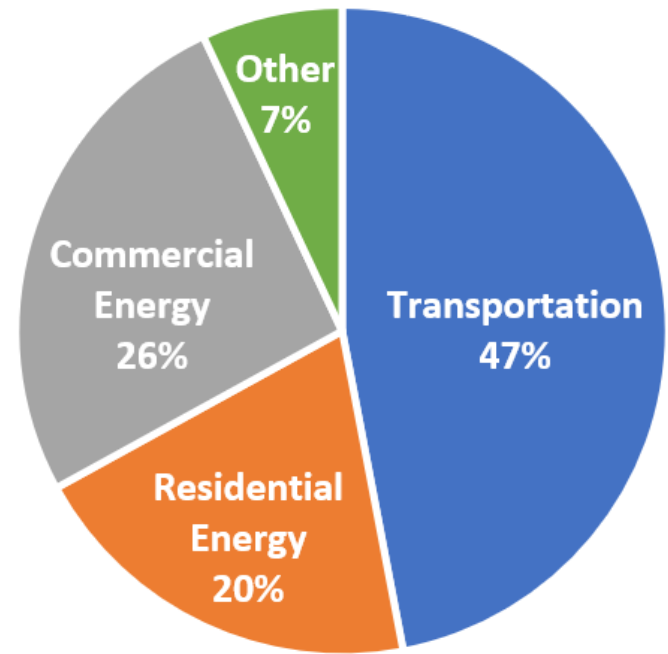
# Climate Change

## Reduce greenhouse gas emissions 80% by 2050

### Bellevue Community GHG Emissions Trends and Target



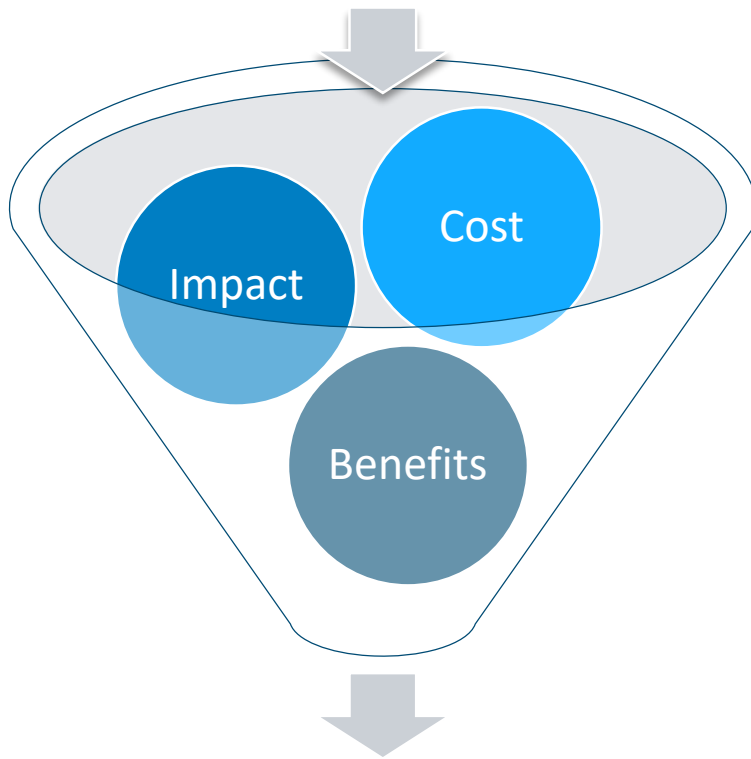
### 2018 GHG Emissions





# Strategy Development

## Potential Actions



## Short-list of Actions

## Planning and Land Use Strategies:

- Focus growth near transit
- Continue planning for mobility alternatives
- Preserve and grow the tree canopy
- Implementing low impact development strategies

# Next Steps

**Analyze and short-list possible  
strategies and action**



**Outreach and Engagement**



**Draft Plan**



**Review draft  
plan with  
Council**



**Council  
Adoption of  
Plan**

Nov

Dec

Jan

Feb

Mar

Apr

May


Jun

July

Aug



**Thank you!**  
**Q&A Discussion**



**Jennifer Ewing, Environmental Stewardship Program Manager**  
**Community Development Department**



# Mobility and Land Use

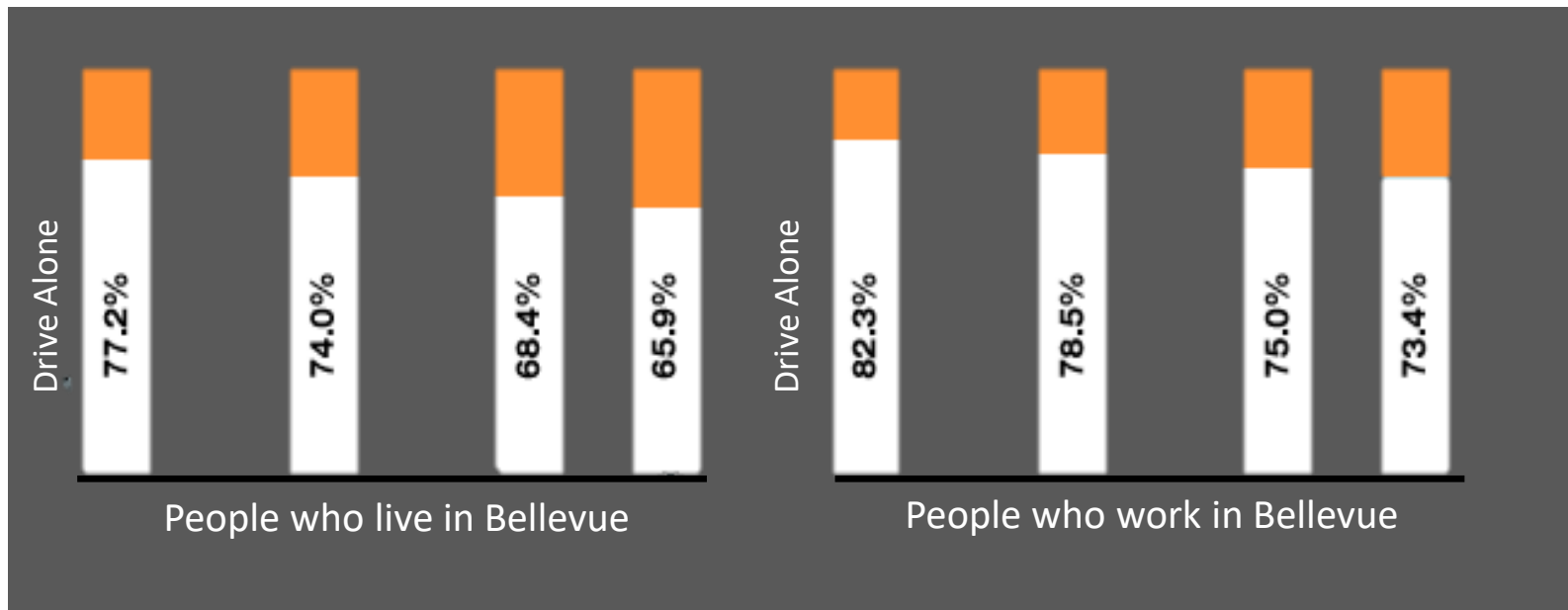
## Reduce Drive Alone Rate

### Comprehensive Plan Goals

By 2035, reduce commute trip drive-alone mode share to  
**55%** drive alone for citywide residents  
**60%** non-drive alone for citywide workers

### Status

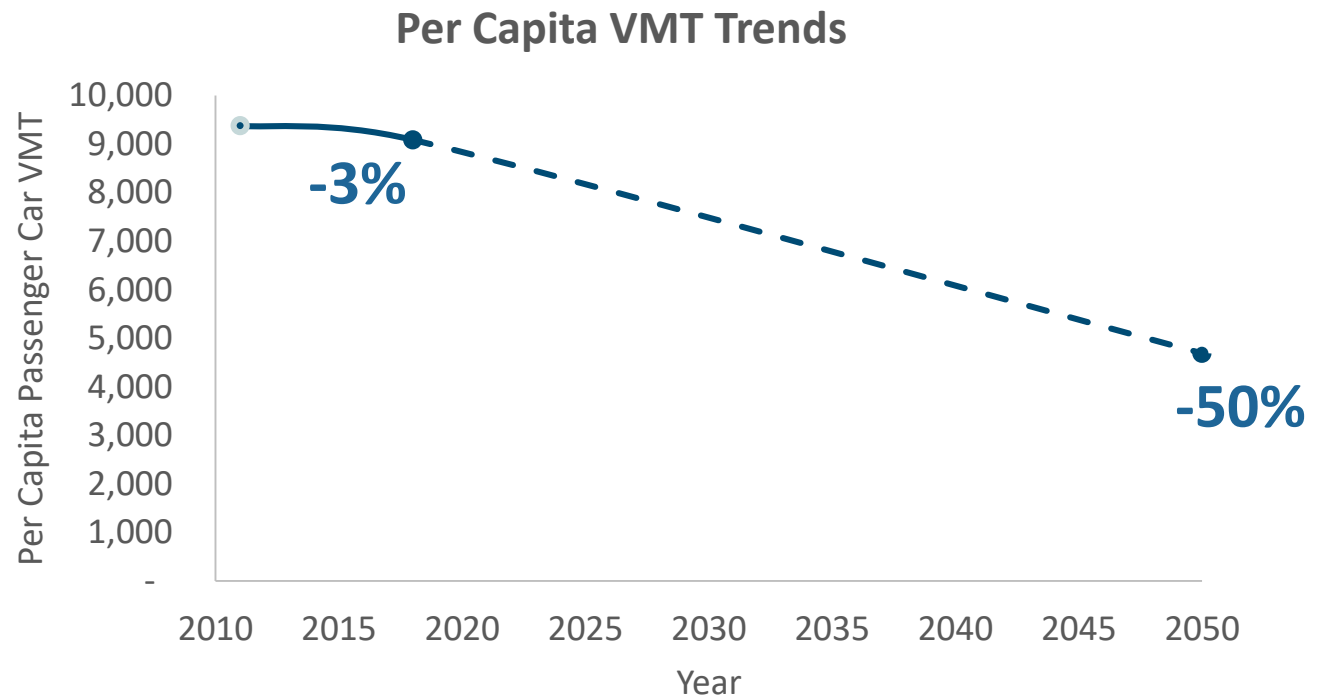
As of the last American Community Survey 5 year average, **65.9%** of Bellevue residents and **73.4%** of Bellevue workers drove alone.



# Mobility and Land Use

## Reduce Per Capita VMT

- Washington State Green Transportation legislation, RCW 47.01.44: Reduce per capita VMT by
  - 18% by 2020
  - 30% by 2035
  - 50% by 2050



# Walkable Access

- **Goal: 72%** of residents live w/in a 1/3 mile of a park, open space, or trail access point
  - **Performance: 73%** of residents
- **2050 Goal: 100%** of residents have walkable access

