

# **East Link Light Rail Project Update**

---

**City Council Study Session**  
July 13, 2020

# Agenda

---

- ***Operations and Maintenance Facility (OMF): East - Project Status***

Jon Mihkels, Deputy Executive Project Director, Sound Transit

- ***East Link – Project Update***

Mike Bell, Executive Project Director, Sound Transit

Jon Lebo, Deputy Executive Project Director, Sound Transit

- ***Community outreach***

Marie Jensen, East Link Outreach, Bellevue Transportation

***No council action or direction is requested.***

***Link Operations and  
Maintenance Facility: East  
Bellevue City Council***

*7/13/2020*

# OMF East



# OMF East Project Status

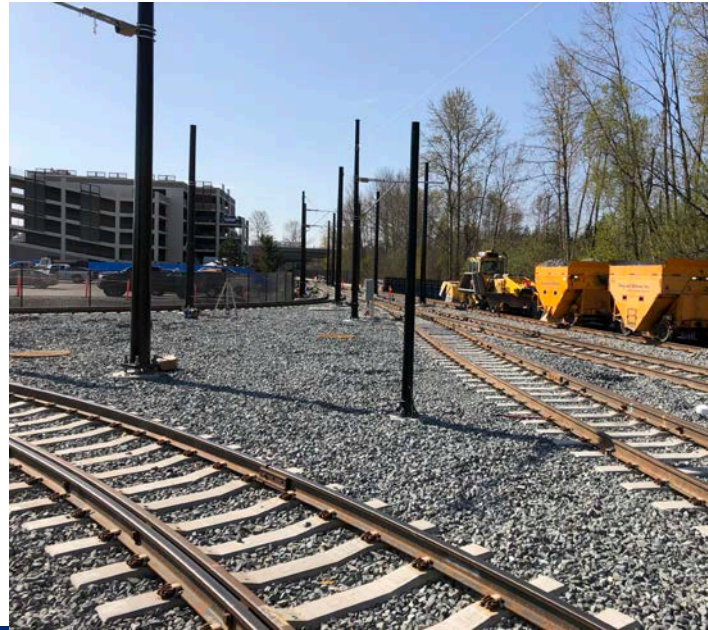
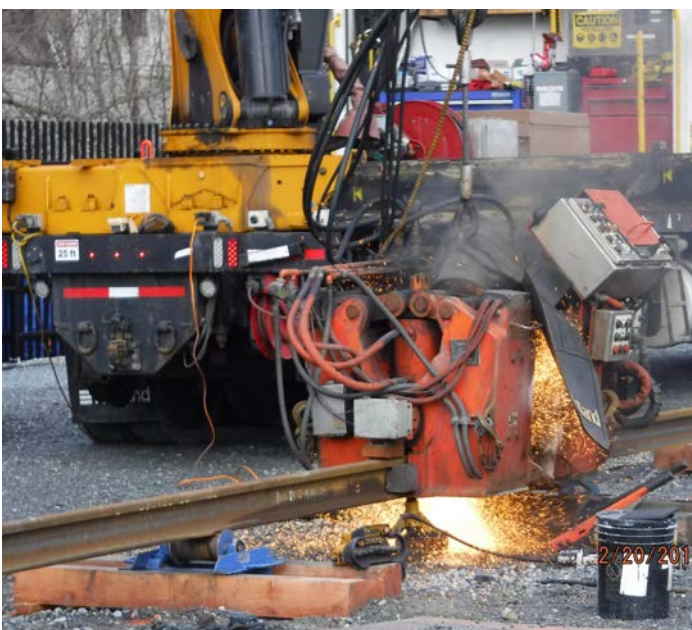
## *In Progress:*

- Installing equipment, building finishes, landscaping, paving
- Commissioning systems
- Preparing for start of dynamic testing with light rail vehicles on-site
- *Substantially Complete in September 2020*
- *Available to support East Link testing and start up*
- *Operating and maintenance staff ramp-up initiated*
  - *facility is designed for 96 LRVs, and 260 employees*



# *LRV storage area is nearing completion*

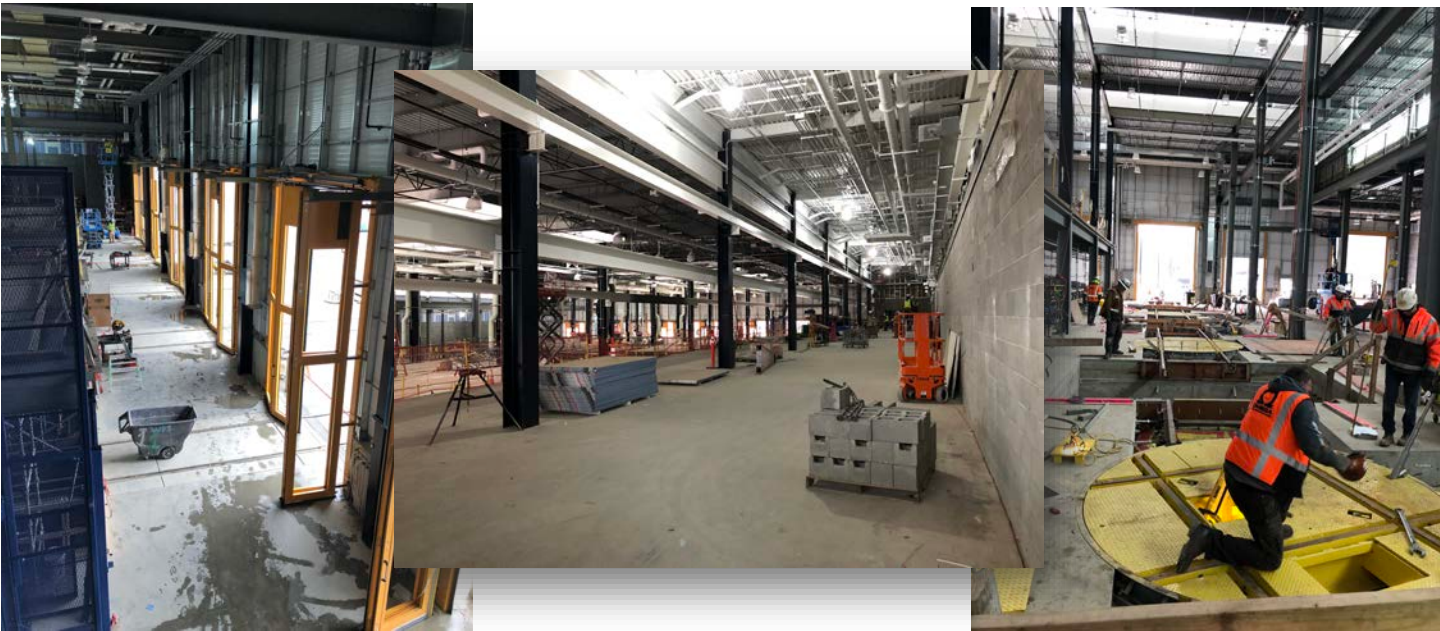
*Yard has over 5 miles of track*





# *The OMF Building*

*160,000 Square feet of shops and offices*





# OMF East – Art Installation, East Trail

*“Nails”, 478’ long freestanding sculpture by Christian Moeller*



# *Exterior Finish*

*Eastrail Trail open to public along 120<sup>th</sup> and west side  
Landscaping nearing completion*



# *Light Rail Vehicles (LRV)*

*The first 20 of 152 new LRVs in Seattle for testing*



# Challenges and Upcoming Milestones

## Challenges

- COVID-19 Impacts
- Managing unforeseen issues that may arise during system testing
- Training staff, preparing for use and maintenance

## Next steps

Temporary Certificate of Occupancy	August 2020
Actions before Council regarding easements	September 2020
Substantial Completion & Certificate of Occupancy	September / October 2020
Sound Transit staff move-in to new facility	4 <sup>th</sup> Quarter 2020





 [soundtransit.org](https://www.soundtransit.org)

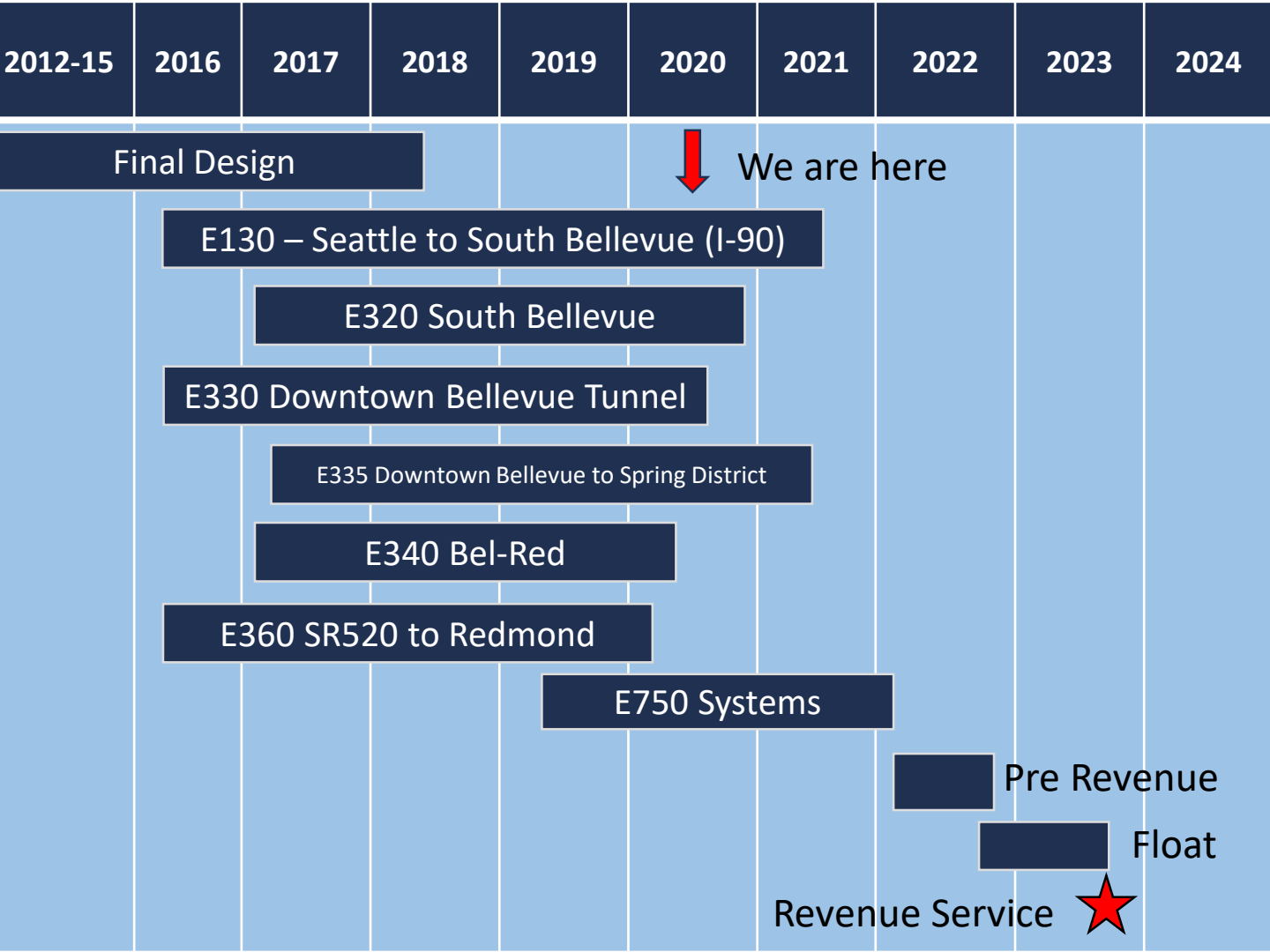


# ***East Link Project Update***

*Bellevue City Council*

7/13/2020





# *Judkins Park Station*



# *Mercer Island Station*





# *I-90 Long-Span Crossing*



# *South Bellevue Station and Garage*





# Trackway at Winter's House and 112<sup>th</sup> Ave SE





# *East Main Station*

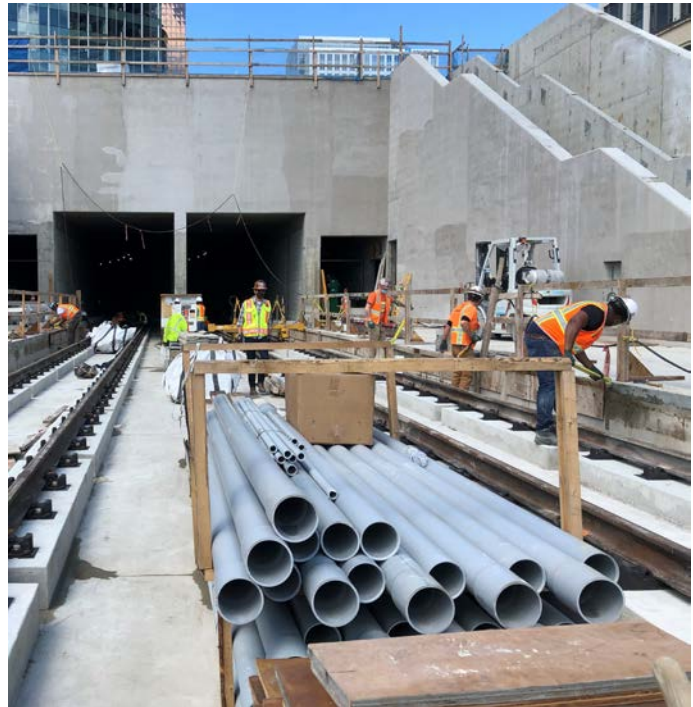
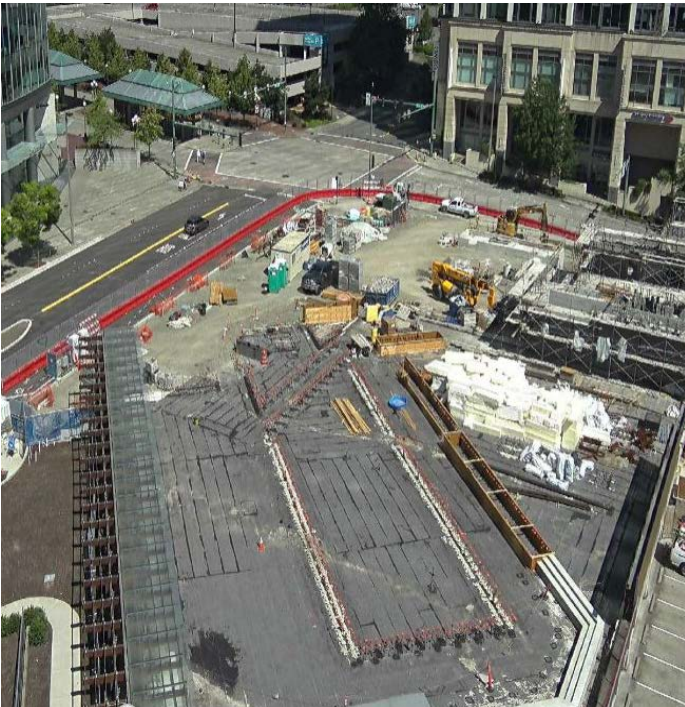


# *South Portal of Downtown Tunnel*





# *Bellevue Downtown Station*



# *I-405 Crossing*

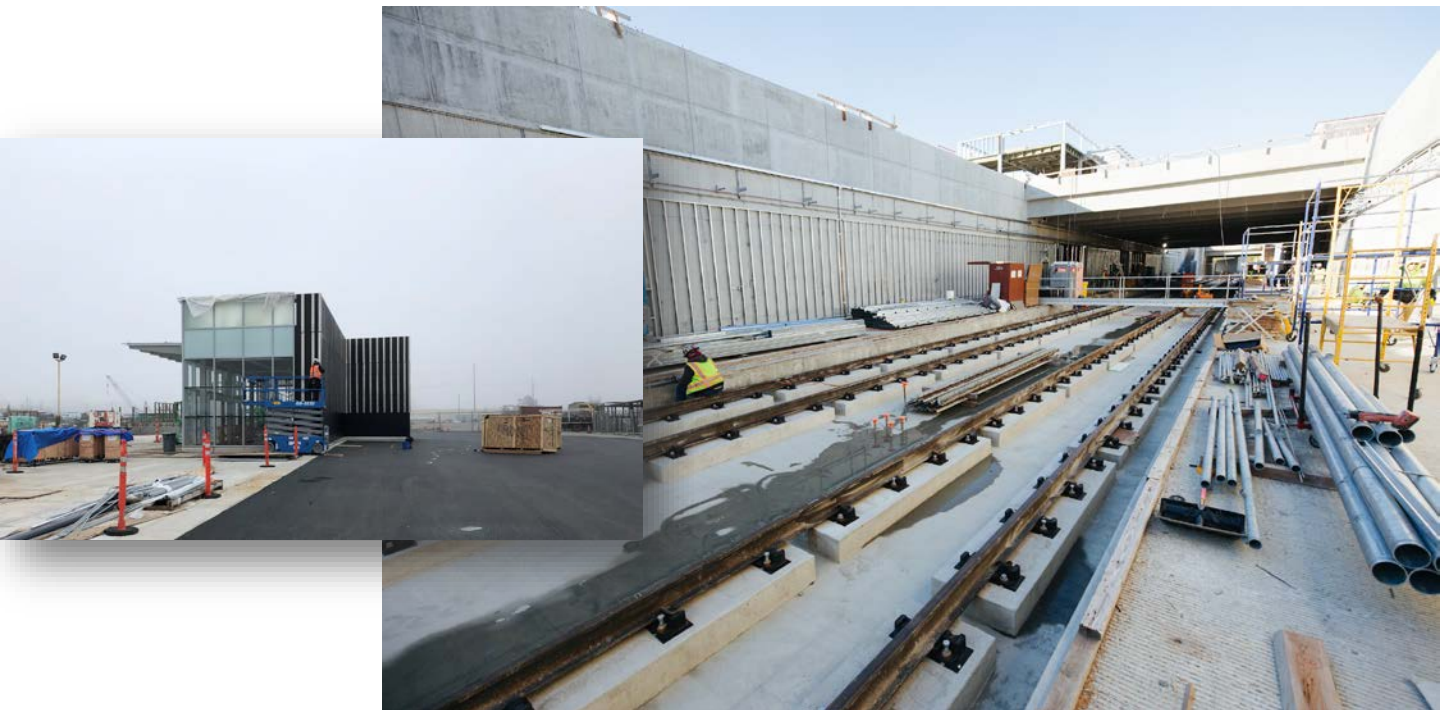




# *Wilburton Station*



# 120<sup>th</sup> Station





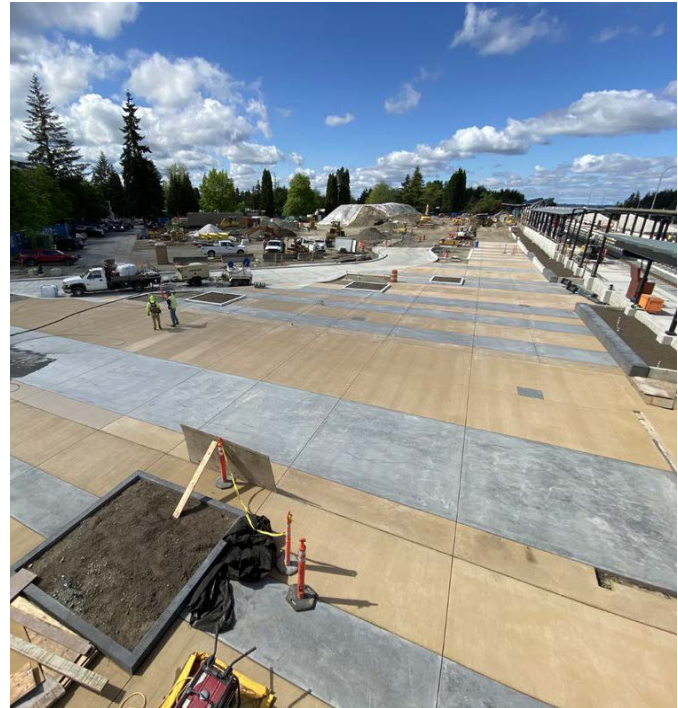
# *TOD in Bellevue's Bel-Red Corridor*



# 130<sup>th</sup> Station



# *Overlake Village Station*





# *Redmond Technology Station*



*Thank you.*



 [soundtransit.org](https://www.soundtransit.org)



---

# Community Relations

Coordinated response





# Outreach staff & communications

---

## **Sound Transit**

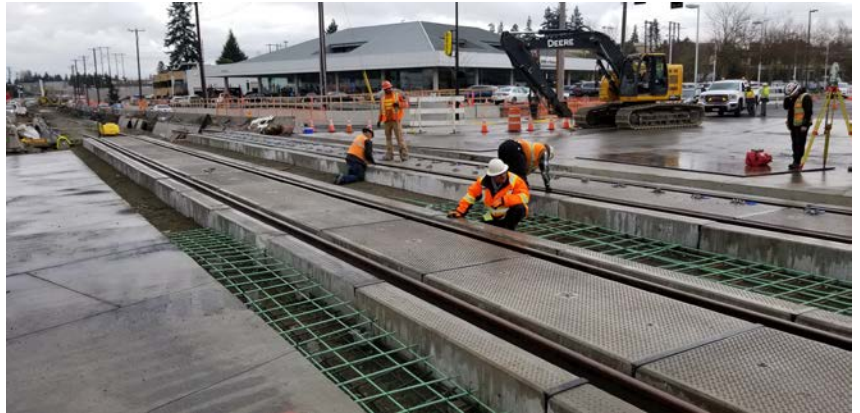
- Outreach staff per segment & OMF-E
- Construction alerts (subscribers)
- East Link website
- Social media

## **Bellevue Transportation**

- Outreach lead
- East Link webpage with list serv subscribers
- Traffic advisories webpage with list serv subscribers
- City publications and mailers
- Social Media
  - Nextdoor

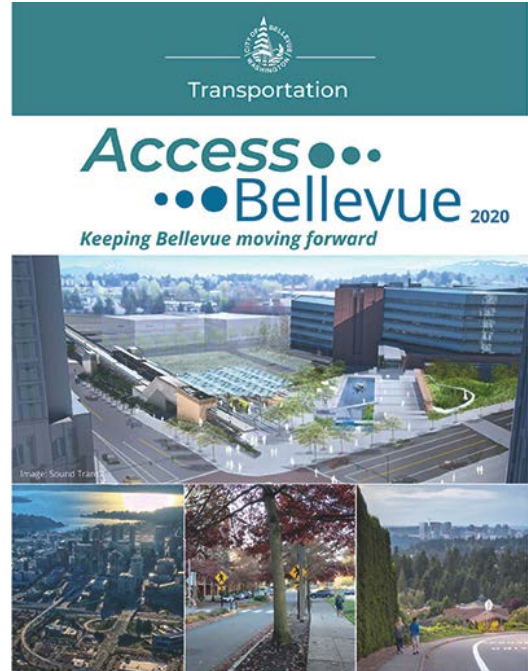
# Common concerns

- Construction noise
- Traffic impacts
- Environmental impacts



# Access Bellevue initiative

- MOU commitment
- 3<sup>rd</sup> edition of city wide mailer (May 2020)
- Postponed “BelRed Coffee & Convo” engagement event



# Questions?

---

Presentation is informational only; no decision is asked of the City Council.

