

Environmental Stewardship Plan

Draft Actions



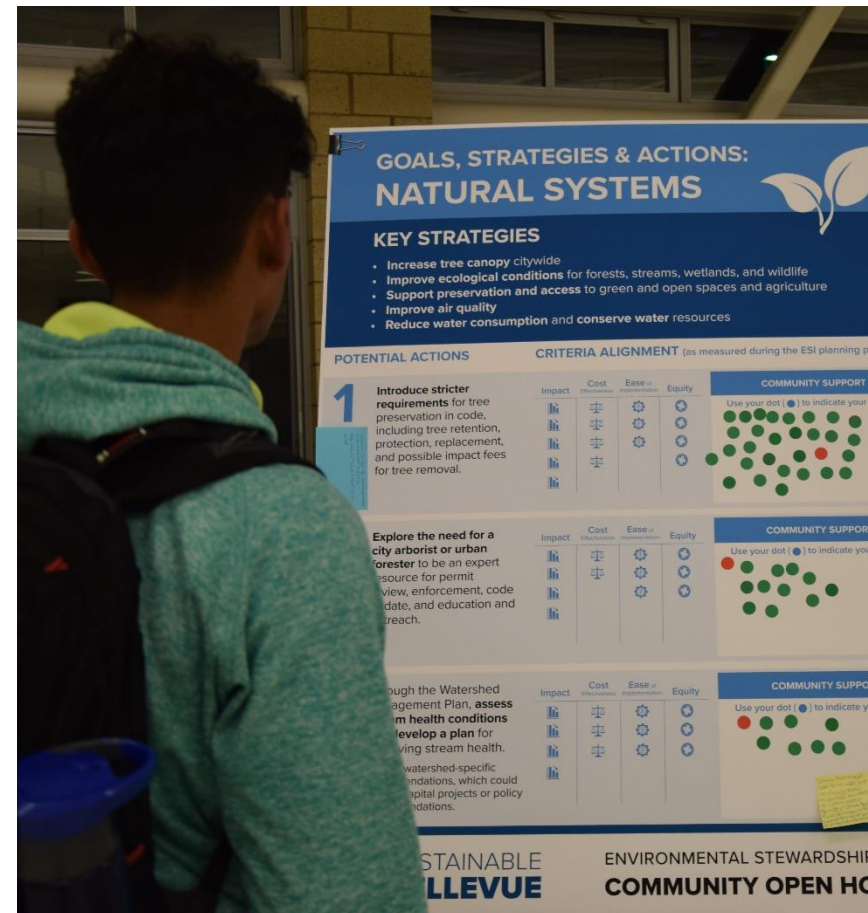
Planning Commission

**Jennifer Ewing, Environmental Stewardship
Program Manager**

July 22, 2020

Presentation Overview

- Progress since last presentation (Feb 26 2020)
- Updated goals and targets
- Outreach and engagement overview
- Draft list of actions
- Impact of land use and mobility actions on GHG goals
- **Discussion:** Input from Commission on draft actions



Council Direction for Boards and Commissions

City Council Vision Priority #11

Review progress of ESI and analyze additional steps the City may take to achieve its environmental goals.

- Engage with all Boards and Commissions
(Nov 12 2019 Council Study Session)
- Boards and Commissions Role:
 - Provide input on possible strategies and actions for the plan
 - No formal action is needed



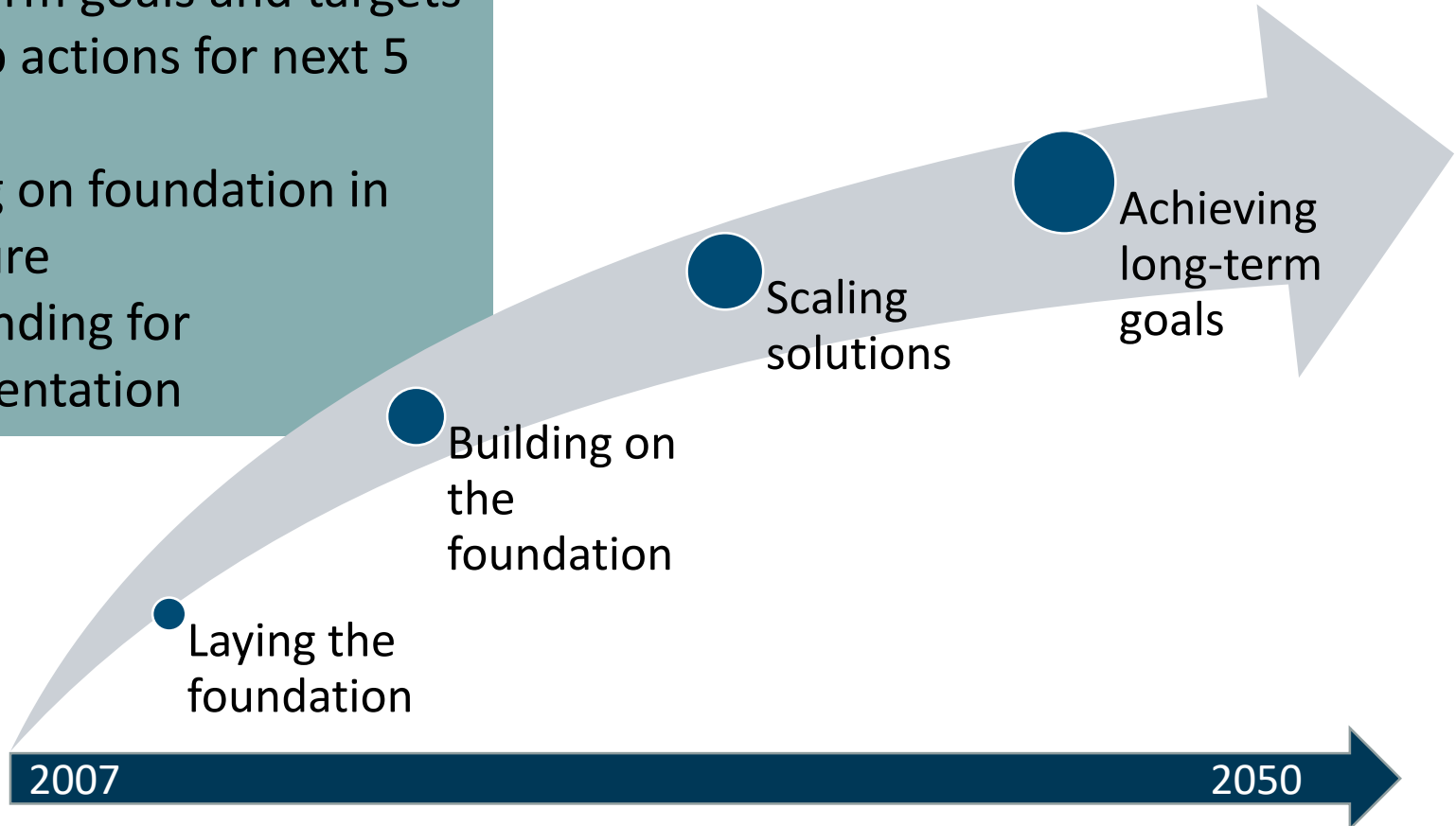
Communitywide Targets

	2030	2050	
MATERIALS & WASTE	50%	90%	Recycling Rate (or Zero-Waste)
MOBILITY & LAND USE	65%	45%	Drive Alone Rate
	25%	100%	Electric Vehicles
	20%	50%	VMT/Capita Reduction
	75%/50%	85%/65%	<div> % of Jobs % Housing </div> <div> } Within ¼ mile of freq. transit station </div>
ENERGY	75%	100%	Renewable Energy
	10%	30%	Energy Use Reduction
NATURAL SYSTEMS	38%	40%	Tree Canopy Cover
	80%	100%	1/3 mile to Park Access
CLIMATE CHANGE	50%	80%	Greenhouse Gas Reduction

Framework for the Plan

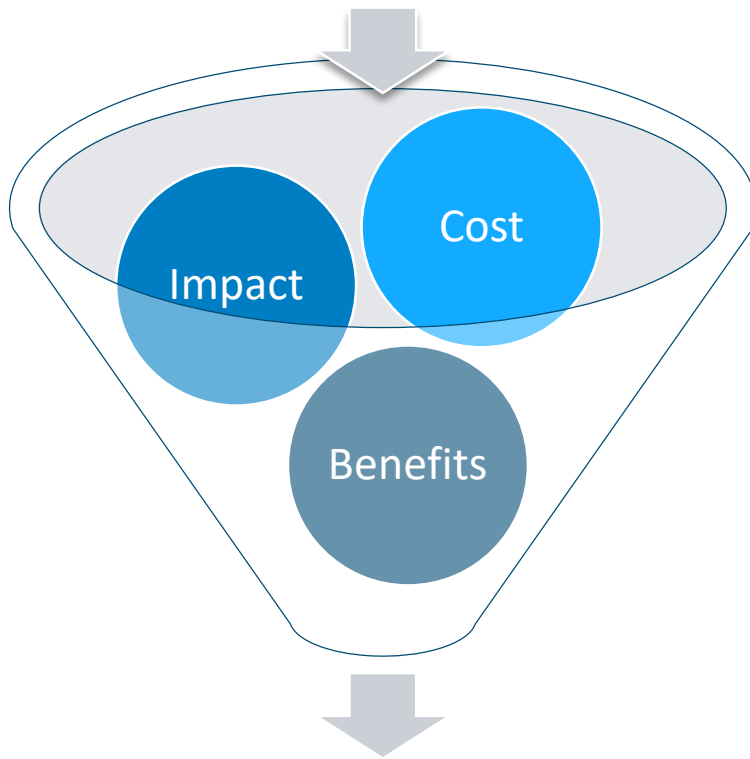
2020-2025 ESI Plan

- Establish long-term and short-term goals and targets
- Develop actions for next 5 years
- Building on foundation in the future
- Seek funding for implementation



Action Development

Potential Actions

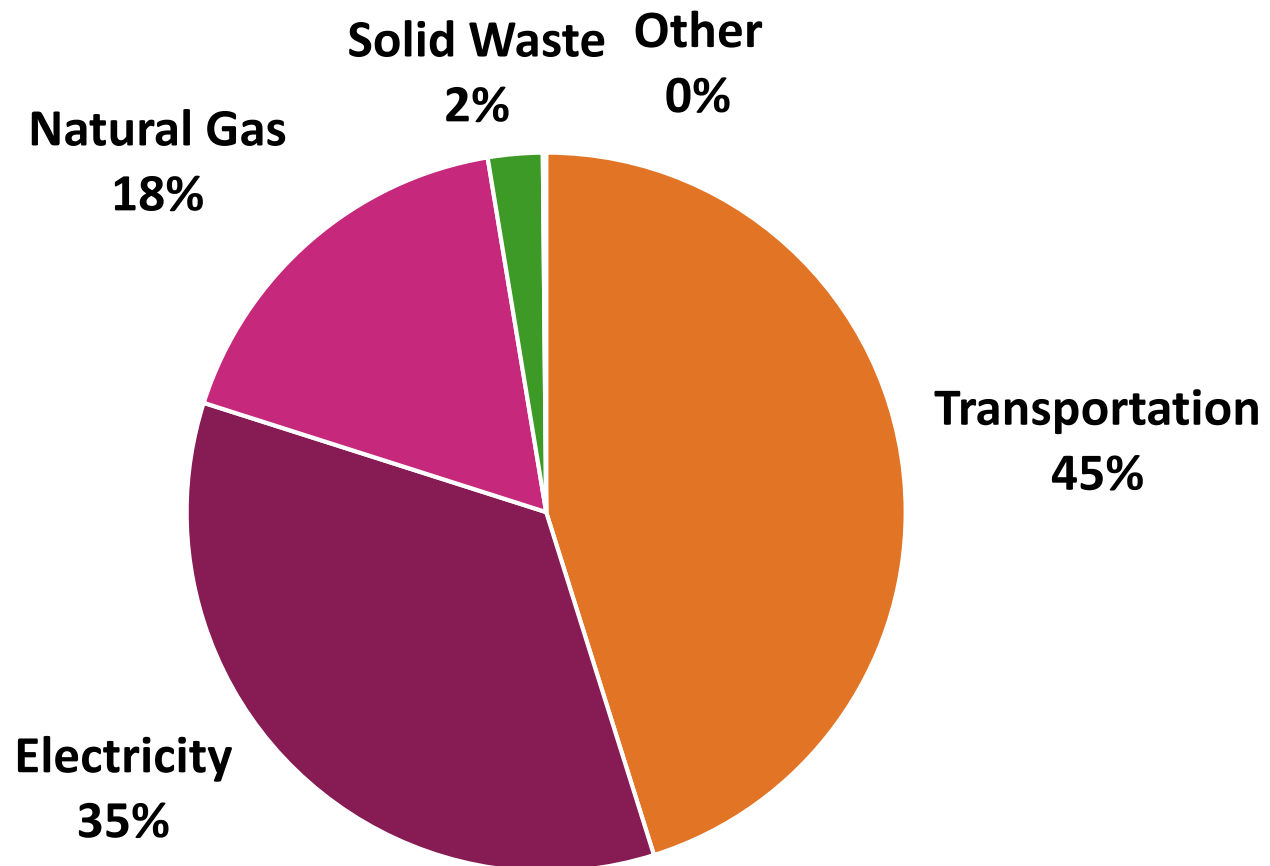


- **Policies**
- **Programs**
- **Projects**

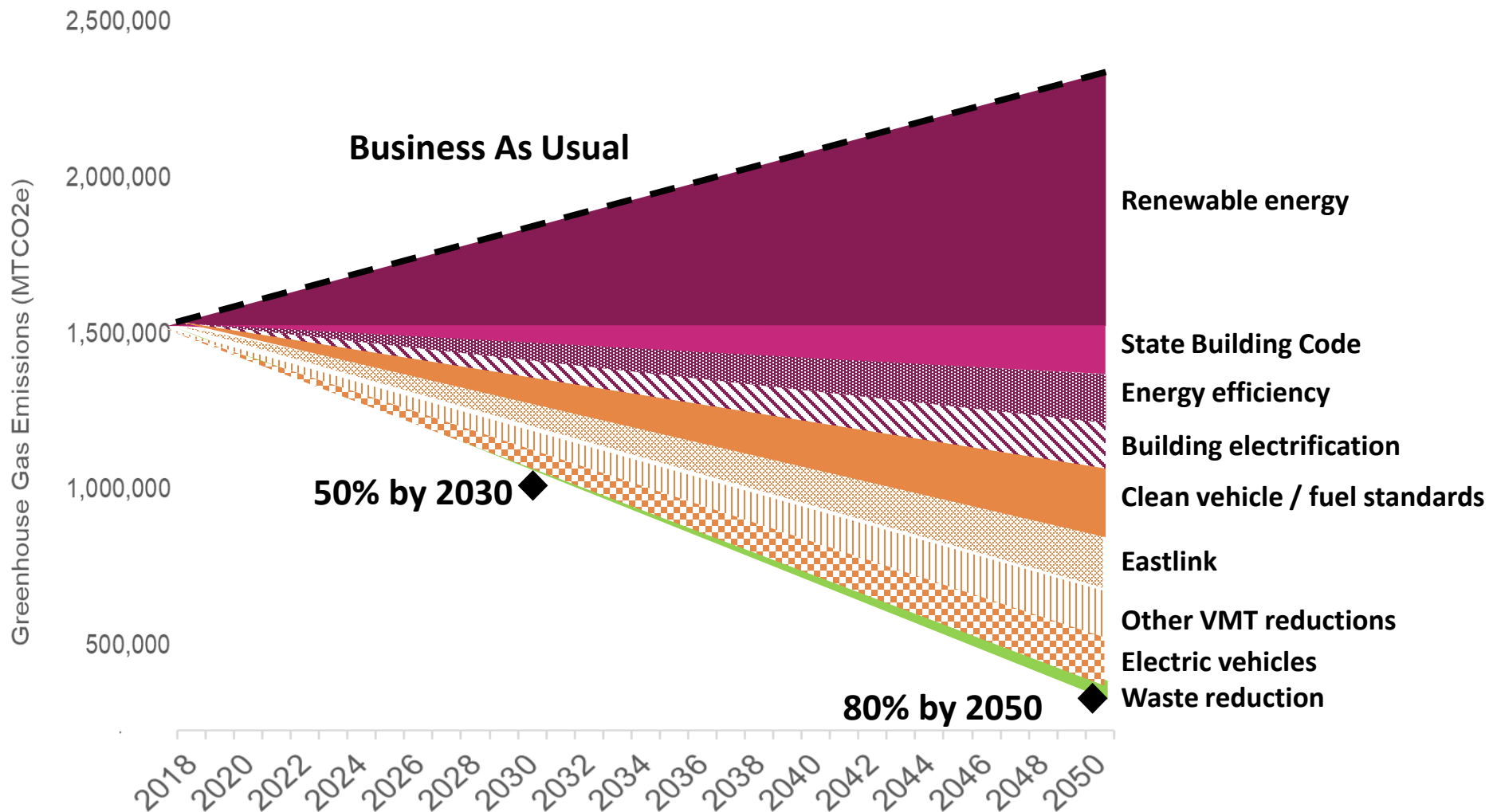
Short-list of Actions

GHG Emissions

2018 GHG Emissions (MTCO₂e)

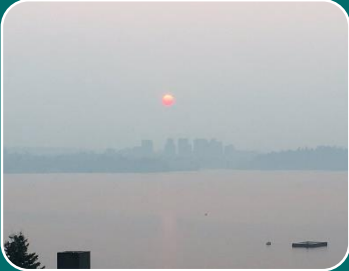


Communitywide GHG Emissions Reductions



Note: Graph based on analysis performed by Cascadia consulting for illustrative purposes.

Draft Actions



Climate

- Sustainable District
- Climate Vulnerability Assessment
- Climate equity
- Environmental equity assessment
- Air quality



Mobility & Land Use

- Growth Center Parking study
- Leverage Frequent Transit Network Service Assessment



Materials Management and Waste

- Recycling Space Requirements

Draft Actions



Natural Systems

- Tree preservation code
- Integrated Design and Site Selection



Energy

- Advanced Green Building Pilot Program
- Green Building Incentives
- Green Affordable Housing



Implementation

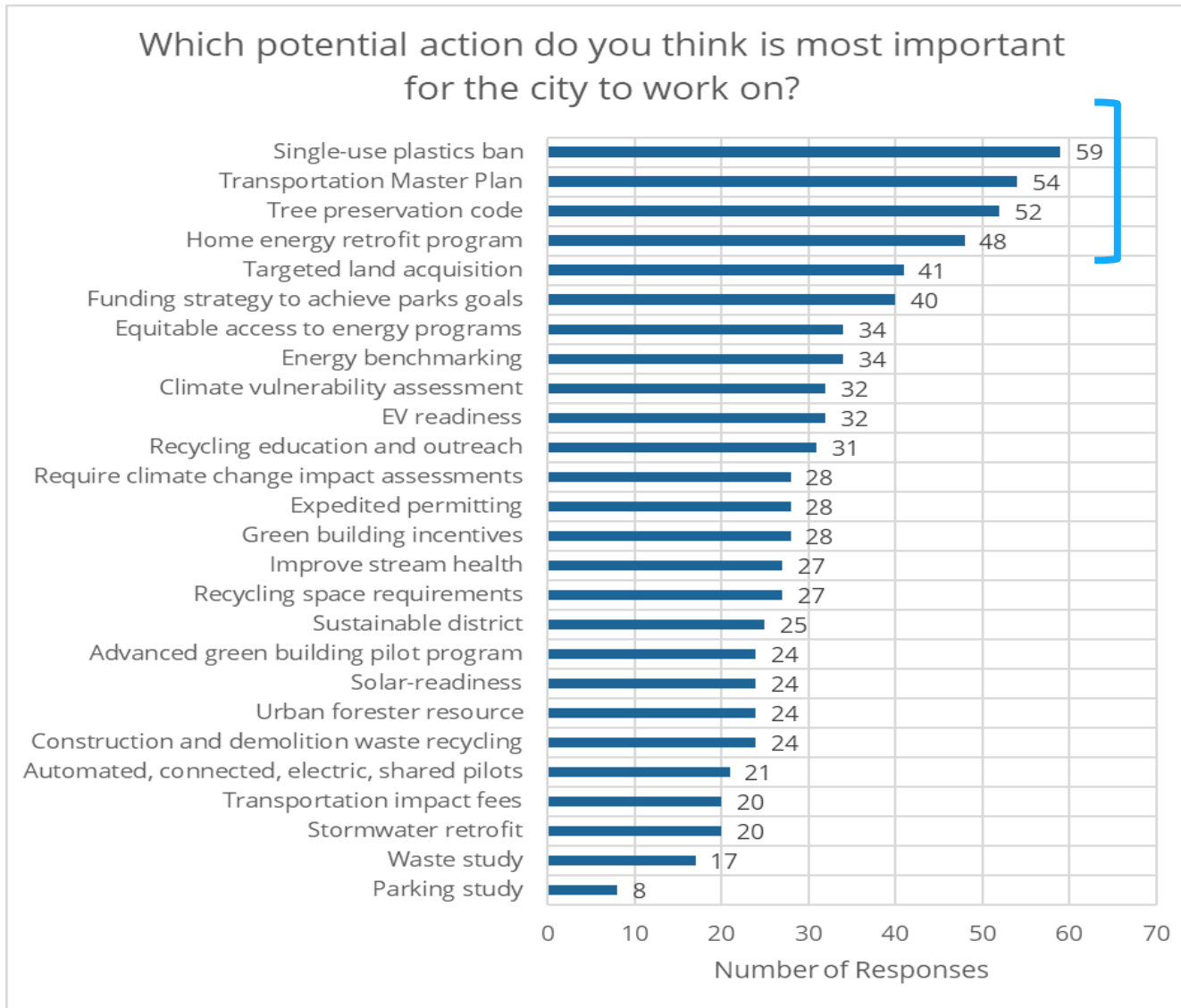
- Environmental Stewardship Plan as a Comprehensive Plan Functional Plan

Public Engagement – Phase 2

- Open House on March 3
- Online Survey: 600+ respondents
- Earth Week: Climate Anxiety Talk and Online Town Hall
- Business Focus Groups and Bellevue Chamber presentation
- BSD Sustainability Town Hall



Top Actions



COVID and Climate Change

Flattening the Curve on Climate

- Prioritizing strategies which reduce costs for residents and businesses
- Support job growth
- Consider economic recovery timing in implementation planning for Environmental Stewardship Plan
- Incorporating sustainability into economic recovery

Revised Timeline

Strategy Analysis

Boards and
Commissions

Phase 2 Outreach

Boards and Commissions

Finalize Draft
Plan

★ Council Update

Draft
Plan


★ Council
Draft Plan

★ Council
Adoption

Feb Mar Apr May Jun Jul Aug Sept Oct Nov Dec



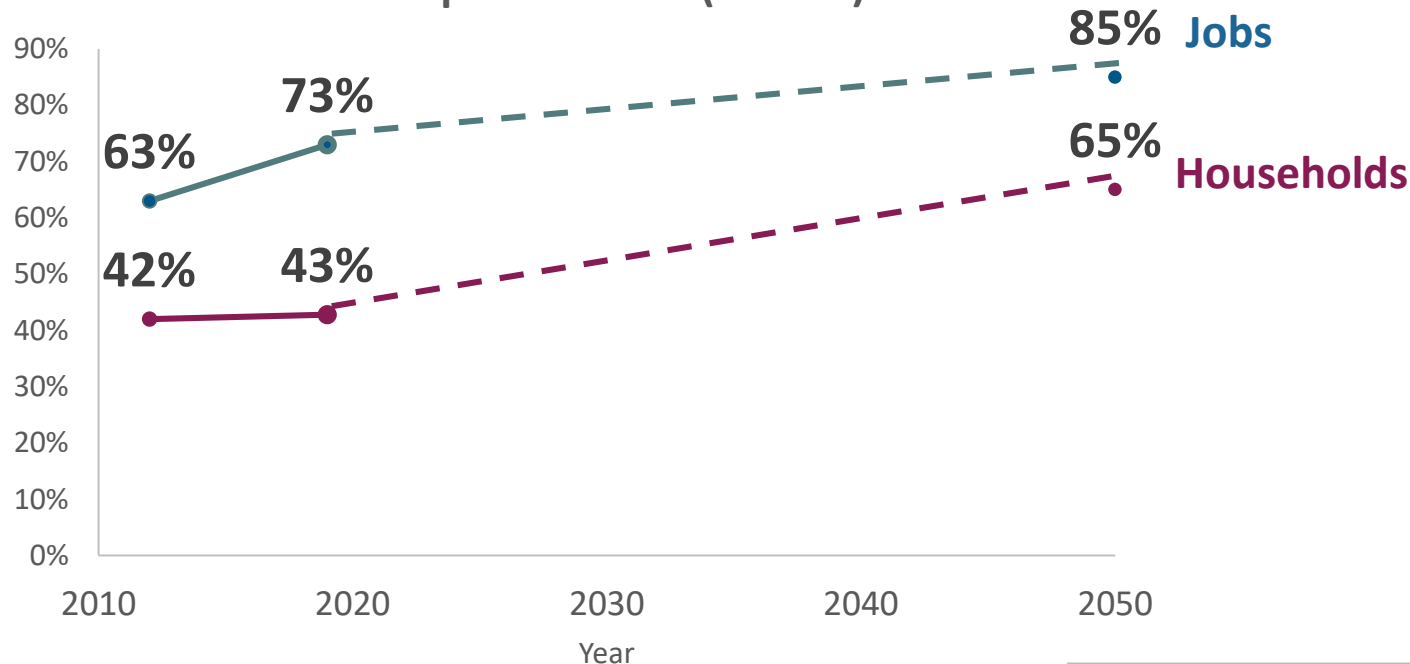
Thank you!
Q&A Discussion



Jennifer Ewing, Environmental Stewardship Program Manager
Community Development Department

Increase Housing in Proximity to Frequent Transit

Percent of Jobs and Households within ¼ Mile of Frequent Transit (15 min)



Funding Scenario	2030 Households Projection				Total HH
	Quarter-Mile		Half-Mile		
	15-min	30-min	15-min	30-min	
Growing	58.1%	76.6%	75.4%	91.3%	70,300
Stable	57.7%	68.5%	75.3%	85.4%	
Reduced	57.8%	57.8%	75.3%	75.5%	