

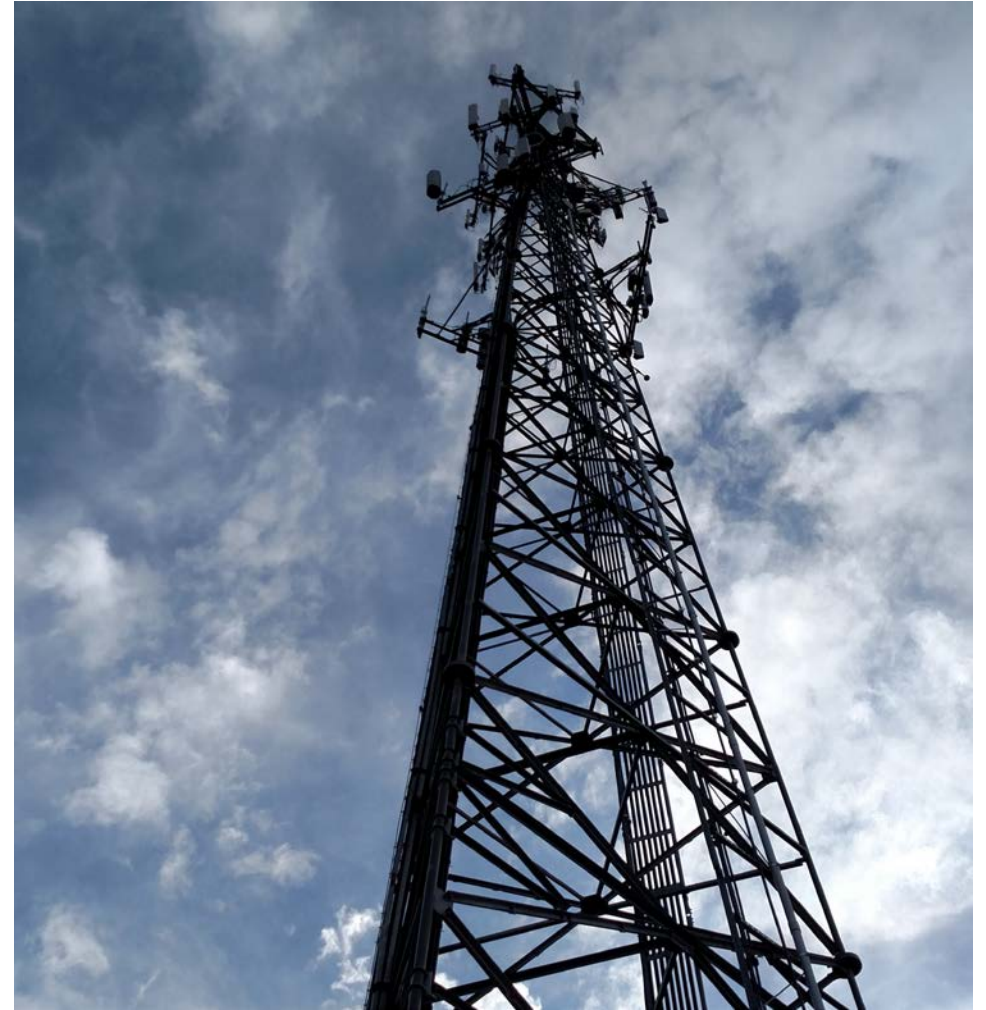


Puget Sound Emergency Radio Network (PSERN)

Presenters: David Mendel & Kimberly Nuber

Presentation Topics:

1. About PSERN –
 - Project
 - System
 - Operator
2. Project Status / Updates
3. Operator ILA
4. Next Steps



About PSERN ...

the Project, the System & the Operator

PSERN – Background on the Project, System & Operator

- The 12 system owners identified the need to upgrade and expand the current emergency radio system, King County Emergency Radio Communications System (KCERCS).
- PSERN Project funding was approved by King County voters in April 2015 (\$0.07 per \$1,000 AV for nine years, beginning in 2016).
- Expectations for the **PSERN Project** and the new **PSERN Operator** agency were memorialized in 2015 via:
 - the “Implementation (Period) Interlocal Agreement,” and
 - a Memorandum of Agreement (MOA).
- MOA called for a third agreement related to the new PSERN Operator – *the PSERN Operator (Operations Period) Interlocal Agreement*.
- The 12 entities who own the current system are also parties to the Implementation ILA, the MOA, and the PSERN Operator ILA.
- **PSERN** will serve first responders and other government workers daily.



Photo courtesy of Motorola (from APX™ 6000 SINGLE-BAND PORTABLE RADIO specifications sheet)

Deer Creek Shelter





Sobieski Snow clearing





Hwy 2 Repeater –
12' microwave
dish to install



Radio Shop
Site set up for testing



West Tiger
Tower crew in RF protective gear



Hwy 2 Repeater – tower complete



What PSERN Will Provide

PSERN Operator

Advanced digital technology and improved capacity, capability, and connectivity.

New 20+ year contract with vendor (Motorola).

Single billing agency with uniform rates, operational standards, and system performance requirements.

Improved coverage throughout the county to accommodate population growth – including highways 2 and 410, and I-90.

Updates, upgrades, and repairs of both system and dispatch consoles.

New end user radios (over 17,000).

Infrastructure support every day, 24-7.

PSERN Project – Schedule Status

PSERN PROJECT MILESTONES		*Current Completion Dates <i>End of August 2020</i>
Project Planning		Aug. 2012
Preliminary System Design		Dec. 2014
Final System Design		Sep. 2017
Transition of Dispatch Centers (Countywide)		Oct. 2020
Site Construction Complete (Urban Areas of King County)		Dec. 2020
PSERN Operator Formation (Leadership)	<i>Start Date ~ Jan. 2021</i>	Jun. 2021
Deploy and Transition End User Radios	<i>Start Date ~ Sep. 2021</i>	Jun. 2022
<i>Project Complete (FSA) / Transfer to PSERN Operator</i>		Dec. 2022
PSERN Project Closeout		Dec 2023 13

PSERN Project – Updates on Key Work Programs

Radio Site Leasing

- 100% of legal agreements done for regular radio sites.
- 2 in-building coverage sites are done, and legal agreements for remaining 2 are in lease negotiations.

Radio Site Construction

- 98% of regular radio sites are constructed or under construction.

PSERN Operator Interlocal Agreement (ILA) – 12 Parties

- ILA approved by 10 councils.
- 2 are in the legislative/approval process.
- Goal: all 12 councils approve by mid-October and signed by December 2020.

PSERN Project – Risks

Director's Top Three Risk List:

1. More COVID-19 delays.
2. Transition of public safety communications equipment (DAS) inside of 600+ buildings to PSERN frequencies.
3. Site construction delays.

Current Project Budget Summary

Projected Revenue (Levy): \$299.3 million

- Project Costs: \$288.4 million

Available Balance: \$10.9M*

**As of August 31, 2020*

The PSERN Operator Interlocal Agreement (ILA)

Key Elements of ILA – Governance

New non-profit governmental agency will take over operations of PSERN.

- Board of Directors will be the governance and policy-making group; comprised of:
 - 4 voting members (*representing the 12 parties to the Operator ILA*):
 - City of Seattle
 - One vote representing five Eastside Public Safety Communications Agency (EPSCA) cities
 - King County
 - One vote representing five Valley Communications Center (ValleyCom) cities
 - 2 non-voting members - representatives from fire and police
- Executive Director will run day-to-day operations and hire staff.

Key Elements of ILA – Other

- Commits to formation of an **Operations Board**.
- **Some** specifications related to **employment terms**.
- **Flexibility in how the Operator is managed**, including contracting for services.
- Outlines **Operator's responsibilities** for system throughout its useful life – maintenance, support, and performance.
- **Protections for parties** to the Operator ILA, including financial.

Key Elements of ILA – Impacts on End Users, cont.

Year 1 estimated monthly fees to be billed by Operator are:

- \$31.12 / public safety radio
- \$24.27 / general government radio
- \$999.75 / dispatch console
- *Year 1 estimated fees for city of Bellevue: \$323,967 / year for 939 radios*
(NOTE: Fees depend on the agency staffing model and if Project can offer rate stabilization)

For comparison, the current:

- Monthly radio rates for EPSCA agencies is \$25.25/month

NOTE: No agency pays a console rate today.

Next Steps

Next Steps In Forming the PSERN Operator

1. PSERN Operator ILA signed by all 12 parties (Goal: December 2020).
2. File Articles of Incorporation.
3. Appoint Board of Directors.
4. Board of Directors organizes and begins search for Executive Director.
5. Joint Board to study and finalize draft PSERN Operator budget (which will influence end user rates) by Q4 2021.
6. Executive Director sets up workspaces and hires staff.
7. Operator to be ready to take over the new system by Project completion – currently scheduled for December 2022.

Bellevue City Council Action for Consideration

- PSERN Project team is asking the Bellevue City Council to consider authorizing the signing of the PSERN Operator (Operations Period) Interlocal Agreement
 - If approved, the City of Bellevue would be a party to the agreement – includes a vote, through EPSCA, on the PSERN Operator Board of Directors.

Questions?
