

## Gulledge, Kristin

---

**From:** Wei S <wei.song0612@gmail.com>  
**Sent:** Monday, October 5, 2020 7:25 PM  
**To:** EBCC  
**Cc:** PlanningCommission; Council  
**Subject:** Letter to East Bellevue Council

**[EXTERNAL EMAIL Notice!]** Outside communication is important to us. Be cautious of phishing attempts. Do not click or open suspicious links or attachments.

Dear East Bellevue Council:

I have lived and worked in Bellevue since 2009 and I currently live in East Bellevue ( Robinswood). I want to see our community flourish, however with our economic growth, I've also witnessed many hardworking friends and family members struggle to purchase their first home due to the limited supply and high price. Therefore, I'm writing to support the Comprehensive Plan Amendment which would provide a modest rezoning of the property located on NE 8th to allow for multifamily uses.

As a real estate professional as well as a East Bellevue resident, I believe this rezoning would help our community to meet future growth needs by providing higher density of homes in the area. I appreciate your time and efforts and I thank you for the opportunity to share my support for this Amendment.

The address of the subject property is:

13655 & 13635 NE 8th St  
Bellevue 98005

Sincerely,

Wei Song  
2506 156th Ave SE, Bellevue.  
206-992-4682

## Gulledge, Kristin

---

**From:** Linda Shoemaker <linda@ames-shoemaker.com>  
**Sent:** Monday, October 12, 2020 4:40 PM  
**To:** PlanningCommission  
**Subject:** Approval of Glendale Country Club Comprehensive Plan Amendment

[EXTERNAL EMAIL Notice!] Outside communication is important to us. Be cautious of phishing attempts. Do not click or open suspicious links or attachments.

We have lived on 131st Ave NE, directly on Glendale for 25 years. We are not golfers, so are not members at Glendale. However, Glendale has been wonderful neighbors and a very important asset to Bellevue. We strongly ask you to approve the zoning request, the Glendale Country Club Comprehensive Plan Amendment.

Bellevue residents since 1974,  
Jim and Linda Shoemaker  
480 131st Ave NE  
Bellevue, WA 98005

E-mail Jim Shoemaker  
Jshoemaker69@hotmail.com

Linda Shoemaker  
linda@ames-shoemaker.com

## Gulledge, Kristin

---

**From:** VERNON SCHRAG <dwights30@comcast.net>  
**Sent:** Wednesday, October 14, 2020 12:07 PM  
**To:** PlanningCommission; King, Emil A.  
**Cc:** Claudia Balducci; Camenzind, Krista; Lan.Nguyen@kingcounty.gov  
**Subject:** Planning Commissioners Fwd: Council Safety Pledge 10-13-2020 Public Comments  
**Attachments:** MACHINE GUN SALE & HUMAN TARGET AD FOR BEGINNER  
CLASS\_BELLEVUEWA-2017.PDF; Human Services Vision.pdf; Gun Shows WA State 2018.pdf

**[EXTERNAL EMAIL Notice!]** Outside communication is important to us. Be cautious of phishing attempts. Do not click or open suspicious links or attachments.

Dear Bellevue Planning Commissioners & Bellevue City Staffers:

This week, special "Listening Sessions" are being held (starting today) for public inputs about Public Safety and Police Violence in Bellevue. Hopefully you may also be willing to participate?? Maybe? Planning matters for our future Public Safety.

Shootings and killings of residents and visitors in Bellevue are on the rise. Sales of guns and ammo in Bellevue spiked 70% this year during Covid tragedies. Vigilantes are marching openly with military firearms slung over their shoulders to intimidate and threaten people, even at our State Capitol. Disgusting!

I hope EACH of you will speak up as I have (see email below).

If not, you will soon be seeing another private-citizen submittal for **Comprehensive Planning, Vision Zero Gun Safety by 2038 for your action**. I already have it written and ready to go. And it is much more comprehensive and detailed with ample facts and data so you will have information needed to make ethical, wise decisions for our city. Last time you said you didn't have enough facts?? Really? By now I hope you see the need? Do you?

Black Lives Matter; and so do the lives of all the rest of us (especially school age children) in Bellevue and across the Eastside. Now we have teenagers charged with "murder-for-hire" who shot a Bellevue father nine (9) times in front of his home, July 2020. And near my home, another man was shot to death in his home; and several others hospitalized with life-threatening gunshot wounds.

Most of You failed to act and move forward on Vision Zero Guns Safety by 2035. That decision was a serious failing on your part that had serious, deadly consequences.

Start talking now to City Council so you get their backing and support for changing policies and provisions of our Comprehensive Plans. Let's get on board with other Eastside cities. Be honest with the Mayor and City Council, asking them to get real, please. You can do it!

Thanks, Dwight Schrag  
Vision Zero Gun Safety by 2035 Supporter/Bellevue resident

----- Original Message -----

From: VERNON SCHRAG <dwights30@comcast.net>

To: "council-pledge@bellevuewa.gov" <council-pledge@bellevuewa.gov>

Date: 10/13/2020 11:17 AM

Subject: Council Safety Pledge 10-13-2020 Public Comments

Dear Council-Pledgers & OIR Group Consultants:

Since tomorrow is the beginning of your "Listening Sessions", this will be my final written memo for things you should begin looking at very closely, ... unless you make a request for further review of other consequential materials in my files.

I bring to your attention three (3) attachments with online photo screenshot, Human Services Vision policies; and memo to City Hall that might deserve deeper scrutiny and investigation.

AOR Group should ask the City Council and PD what their standards will be for any "Promises" they may offer to make. **What Standards apply? Not just Visions, Proclamations or Promises, but real plans, schedules, budgets, resources, personnel and tracking of progress on a regular/ongoing basis.**

**#1 - An online Ad (pdf attached)** for an Iraq War Assault Machine-gun FNH USA M249S, for sale in Bellevue. It's shown as "slightly modified" to make it street-legal and allowing the buyers to put your "Mag Stash to good use".

But the main point for your critical awareness is the circled advertisement for "Entry-Level" shooting Classes held right here in Bellevue at our 31,000 Square foot, ... Largest Shooting Range in Western WA. Note that the TARGET shown happens to be a Human-figure with very dark colored face and arms. What??

**#2- Human Service Commission Vision (pdf attached)** when Entry-Level Shooter-ads go out just as our so-called "Bellevue Human Services Committee" volunteers with their City Council member liaison contact are blatantly issuing grandiose claims with accounts of ALL we do for warm and welcoming of multi-ethnic people here in Bellevue. Really? Can YOU grasp the dichotomy? Some can, re: BELLEVUE IS A COMMUNITY THAT CARES?

**Imagine how a little black or brown child, son or daughter, would feel** seeing their Entry-level "target" at the shooting range, NOT as a "round circle with rings", but a dark-skinned silhouetted person?? Maybe there are people in Bellevue City Hall who care enough and are concerned? Ask EACH ONE OF THEM. Let's get real. No coverups. Please!

**#3 - Memo to Mayor Chelminiak & Planning Commissioners (pdf attached) to address FBI reports** that show **WA State Hate Crimes are 3rd WORST in the U.S.**

The Data speaks for itself. **NO RESPONSE** FROM CITY COUNCIL.

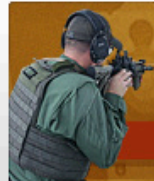
Anyone who believes these issues don't deserve correction, PD's full attention and City Council leadership response should reconsider their own human values (in my opinion). We're Better than this!

Do the best job you can. Be Better. Be Transparent. AND Honest too, please.

Thank you.

Dwight Schrag

Downtown Bellevue Resident of 15+ years


**RIGHT ON TARGET™**[VIEW THE BELLEVUE SHOOTING RANGE →](#)

- Largest in Western Washington (31,000 sq.ft)
- Open Training Bay
- Automated Target Carriers.

**BELLEVUE**  
INDOOR SHOOTING RANGE / PROSHOP / TRANSFERS**ISSAQUAH**  
FIREARM SALES / TRANSFERS


## Reviews

### BROWSE BY:

 [View All](#) [Specials](#)

## Planning Commission Packet H/O Belt-fed "Light" Machine Gun Sale

### The FNH USA M249S

**Grace Strong** Like 31 people like this. [Sign Up](#) to see what your friends like.

The FN M249 SAW (Squad Automatic Weapon) is a belt-fed light machine gun chambered in 5.56mm NATO that has blasted its way through it's fair share of conflicts. Originally designed as the Belgian FN MINIMI, the US adaptation was adopted by the U.S. Military in 1988, and this battle proven design has aided US troops in the Persian Gulf War, Afghanistan, and Iraq War. A civilian replica of this iconic weapon is now available to public as the FN M249S.

What really makes the M249S such an awesome rifle is that it maintains the integrity of it's military grade big brother, with only the absolute necessary changes made to make it civilian legal. You'll find the same 18.5" cold hammer forged, stainless barrel on the M249S as the M249SAW. Both are boast a robust gas operating system, and are belt fed, taking M27 links. An exciting feature of the M249S is that it will take standard AR-15 mags as well, allowing you to put that mag stash to good use! The primary and most obvious difference is that the M249S is a semi-auto set up, versus full auto.

**Date Posted:** January 25, 2017**Available at BELLEVUE LOCATION !!****FOR PUBLIC PURCHASE****Belt-Fed 5.56 mm NATO rounds & AR-15 Magazines**

The FN M249S is the civilian version of the government issued M249 SAW and is available to purchase at our Bellevue location.

**Class | Entry Level Handgun**  
**February 28, 2018**

6PM- 9PM This class is designed for those who have never shot before, or are interested in purchasing a handgun for the first time. Learn the basic...

[VIEW EVENT DETAIL →](#)**Tuesday Night Pistol League**  
**(IDPA)**  
**February 27, 2018**

West Coast Armory's Tuesday Night Pistol League is an International Defensive Pistol Association (IDPA) affiliated club. IDPA is dedicated to creating...

[VIEW EVENT DETAIL →](#)**Permit# 19 103789 AC**  
**Planning Commission H/O**





# HUMAN SERVICES

## WHAT YOU WILL FIND IN THIS CHAPTER

- ▶ Information about human services needs in Bellevue.
- ▶ The City of Bellevue's role in the regional human services delivery system.
- ▶ Policies and guidelines that direct the city's Human Services General Fund and other city investments.

## HUMAN SERVICES VISION

**BELLEVUE IS A COMMUNITY THAT CARES.**

*Every member of the community has the opportunity to achieve their potential and enhance their quality of life. A system of human services assists people in times of need and invests in the development of healthy individuals and families.*

## INTRODUCTION

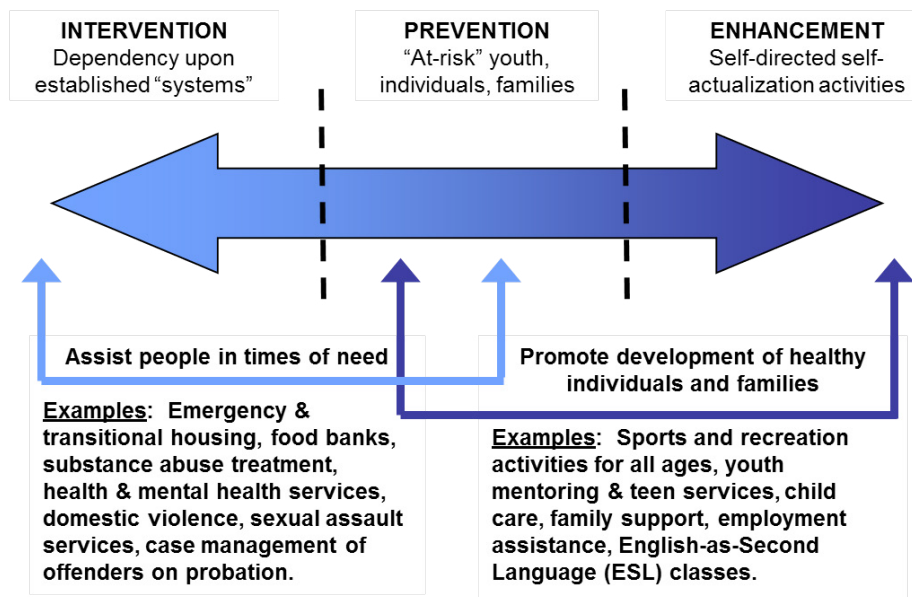


Human services are services that enable individuals and families to meet basic human needs (physical, economic and social) and offer a continuum of support including intervention, prevention, and enhancement.

In order to address these needs, Bellevue has established five community goals, which state that all community members should have:

1. Food to eat and a roof overhead.
2. Supportive relationships within families, neighborhoods, and communities.
3. A safe haven from all forms of violence and abuse.
4. Health care to be as physically and mentally fit as possible.
5. Education and job skills to lead an independent life.

## Human Infrastructure Continuum





## TODAY'S CONDITIONS AND TOMORROW'S PROJECTIONS

### Today's Conditions

The City of Bellevue's population continues to grow and diversify. Increasing numbers of older adults, immigrants from Asia and Europe, and families in poverty are living in the city. Asian-Americans constitute the largest minority group in the city. Hispanic/Latinos and Asians are the fastest growing minority groups. About 42% of residents over age five speak a language other than English at home. Average household size continues to decrease. While the number of older adults (age 65 and older), married couples without children, and single parent families continues to increase. Bellevue's need for human services has grown while the diversification of Bellevue's population has increased the complexity of meeting that need.

**Figure HS-1. Bellevue Demographic Trends**

Demographic Factors	1990 Census	2000 Census	*2014/ 2011-2013
Population	86,874	109,827	134,400*
Percent Minority	14.7%	28.3%	42.2%
Percent of population that are foreign born	13.3%	24.5%	36%
Median Age	35.4	38.2	37.9
Percent of population age 65 and over	10.4%	13.4%	14.0%
Household median income (in 2013 inflation adjusted dollars)	\$78,310	\$85,903	\$91,260
Percent of individuals with incomes below poverty	5.6%	5.7%	8.5%

Sources: Washington State Office of Financial Management and U.S. Census Bureau, 1990 Census, 2000 Census, and 2011-2013 American Community Survey.

### WHAT DOES IT MEAN?

Bellevue's population continues to grow and diversify.

- ▶ There are more older (over age 65) adults.
- ▶ Hispanic/Latinos and Asians are the fastest growing minority groups.
- ▶ About 42% of residents speak a language other than English at home, compared to 14% in 1990.

As Bellevue's population continues to grow and become more diverse, the task of meeting human services needs will become more complex. Service providers will need to respond to the needs of a wider variety of age groups, income levels, cultural backgrounds, and lifestyles.



### *Tomorrow's Projections*

The increasing diversity of Bellevue's population points to a need for deeper analyses of the interconnectedness between traditional human services and other city services. For example, as the number of older adults increases, so does the need for housing affordable to people living on fixed incomes and the need for street and sidewalk maintenance to ensure safe conditions for those with limited mobility. Housing affordability is impacted by land use decisions. Transportation priorities and investments impact mobility and access. With the rising cost of living throughout the state, county, and in Bellevue, the ramifications of the growing number of residents who earn lower-incomes must be considered, with perhaps the city placing a greater emphasis on encouraging job creation. For example, the percentage of families in Bellevue living below the federal poverty level rose from 3.4% in 1990 to 7.5% in 2012. Increasing access to opportunity for all Bellevue residents will be critical for a vibrant and caring community.



## CHALLENGES AND OPPORTUNITIES

To create a community in which all members have the ability to meet their basic physical, economic, and social needs, and the opportunity to enhance their quality of life, the city must be nimble, future-focused and creative in planning for the provision of human services. Changing population demographics and economic realities present challenges as well as opportunities to maximize resources, improve access to services, and provide smart stewardship of funds.

### *Increasing Demand for Services*

According to Census data, the number of low and moderate income residents has increased in recent years. Many post-recession jobs do not pay enough for residents to provide for their basic needs without assistance. As a result, social service agencies are experiencing a greater volume of requests.

### ***Funding***

As funding from federal, state, and county sources becomes increasingly constrained, there is an urgent need for the formation of robust partnerships with non-profits, other government entities, private organizations, faith communities, philanthropic organizations, and interested community members to leverage resources for the greatest benefit.

### ***Complexity of Service Provision***

Human services are provided by a complex network of small and large organizations providing varied services according to their individual missions. It is a challenge to bring together these varied perspectives and approaches to addressing human service needs. Bellevue has the opportunity to align efforts such as through a collective impact model in which all human services providers agree to common goals.

### ***Access to Services***

It is vital residents are able to access services when they need them. Residents may experience barriers to services due to geographic location, eligibility criteria, income, transportation, lack of information, language, past involvement with the criminal justice system, or limited mobility. The increasing diversity of Bellevue residents makes providing culturally competent human services more complex. A service that is successful for one group of individuals will not always be as successful for another group due to differences in age, needs, or language. Opportunities exist to address many access challenges through improved planning and coordination both within and beyond the city.



## WHAT ARE “UPSTREAM STRATEGIES?”

Upstream strategies refer to actions that seek to find the cause of a potential problem and intervene before it occurs, or before it worsens. Upstream strategies not only help prevent future crises, they reduce the need for more costly intervention later.

### *Human Services Continuum*

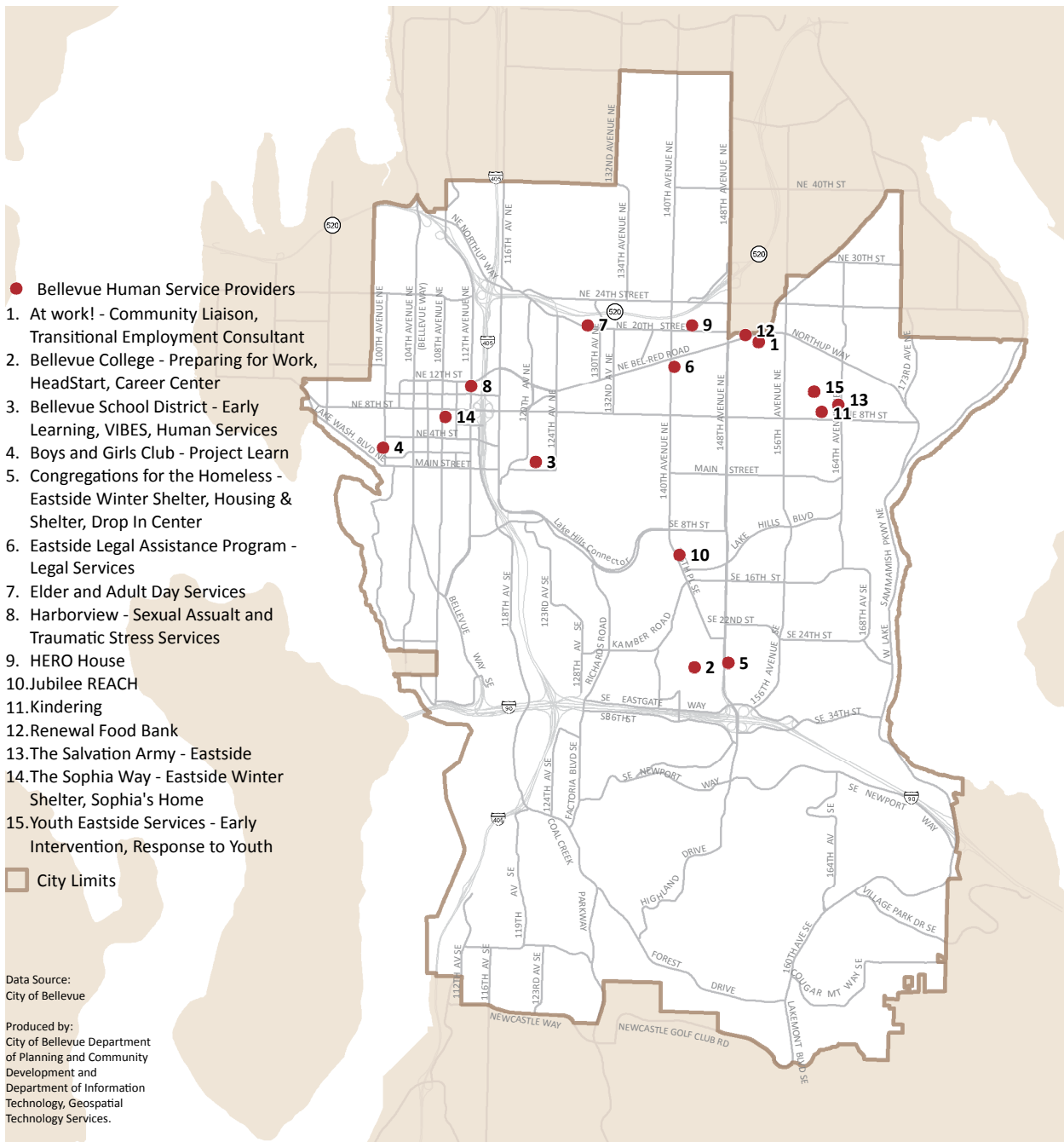
Prevention and early intervention services are critical “upstream” strategies that avert more costly remediation later. It is an ongoing challenge to provide services for serious crisis-oriented issues that need attention in the present while also making strategic investments in prevention and early intervention services. The “human services continuum” model that is already in place seeks to strike an appropriate balance.





### Map HS-1. Human Service Providers

The map below shows the locations of many of Bellevue's providers of human services. These organizations provide Bellevue residents with housing, food, education, legal and employment assistance along with other services.



---

## OUR HUMAN SERVICES PLAN

---



The city is uniquely positioned to provide leadership and influence community awareness, decision making, and allocation of resources for human services through:

- Planning - assessing and anticipating needs and developing appropriate policy and program responses.
- Facilitating - convening and engaging the community in problem-solving to develop and improve services.
- Funding - disbursing Community Development Block Grant and General Fund dollars to support a network of services which respond to community needs.
- Informing - promoting awareness of needs and resources through effective marketing and public relations.



The City of Bellevue recognizes that although the private human services network is the major provider of human services in the community, decisions and actions by local government, school districts, and other governmental entities also impact delivery of and access to services. The city views governmental cooperation and partnership with the private sector as critical to solving local and regional human service issues.

While all city departments are engaged in meeting human service needs, the Human Services Commission assists the City Council in monitoring performance in the human services field. The Commission provides the focal point for community participation in human services and advises the City Council on policy and funding matters. The Commission listens to community concerns, assesses current service needs, forecasts future needs, and makes recommendations to the council on allocation of the city's human services and Community Development Block Grant funding.



## WHAT DOES SUCCESS LOOK LIKE?

- Human service agencies align efforts and increase the collective impact of services provided in Bellevue.
- Culturally appropriate services are available to Bellevue's diverse population.
- Those who need services are able to access them.
- A continuum of human services are available at every level from early intervention to crisis response.



---

## GOALS & POLICIES

---



### GOAL

Create a community in which each and every member has the ability to meet their basic physical, economic, and social needs, and the opportunity to enhance their quality of life.

### POLICIES

- HS-1.** Build public awareness and engage the community in an informed and collective response by assessing and planning for human services needs.
- HS-2.** Encourage efficient use of public and private resources and develop a broad base of community support.
- HS-3.** Identify opportunities and develop strategies that are preventive in their approach to human services needs.
- HS-4.** Allocate funds and other resources across the continuum of human service needs by soliciting proposals from nonprofit agencies for services benefiting low- and moderate-income residents.
- HS-5.** Maintain the city's role as a human services planner and facilitator by engaging service providers and community organizations in dialogue regarding the functioning of the present service systems, emerging needs, and the building of a complete system of services.
- HS-6.** Facilitate the community response to human service needs. Involve the city in direct delivery of human service needs when delivery is consistent with a department's mission or as a last resort when the city is the most equitable and effective provider, or there are no other qualified providers.
- HS-7.** Consider the human services impacts of proposed legislation prior to formal adoption.



- HS-8.** Make Bellevue a welcoming, safe and just community marked by fairness and equity provided to those disproportionately affected by poverty, discrimination and victimization.
- HS-9.** Improve access to services throughout the community by removing physical and systemic barriers and empowering individuals to overcome other barriers that may exist.
- HS-10.** Use City regulatory powers to protect individuals' rights and advance community health and human service objectives.
- HS-11.** Encourage culturally competent service delivery that respects the dignity of individuals and families, and fosters self-determination and self-sufficiency.
- HS-12.** Support and actively coordinate with local, regional, and national efforts that address local human services needs to ensure local programs complement programs provided at the county, state and federal level.
- HS-13.** Encourage partnerships among public and private institutions, schools, human services providers, and others to collectively address needs of children and families using schools as a focal point for the community.
- HS-14.** Support agencies locating human services facilities in Bellevue and, where appropriate, encourage efficiencies through agency collocation and collaboration.
- HS-15.** Support a network of service points that are easily accessible by Bellevue residents and workers, geographically distributed within the city and proximate to public transit.
- HS-16.** Provide leadership and work in partnership with community agencies to encourage and promote the development and expansion of the supply of affordable, accessible, and quality child care which meets the diverse needs of the community in all areas of the city.



- HS-17.** Encourage services that support Bellevue’s workforce in maintaining or advancing their employment opportunities.
- HS-18.** Support an intentional local community response to homelessness with housing and supportive services provided to families, youth and single adults.

---

## POLICY CONNECTIONS

---



The availability of human services requires a citywide approach to ensure equitable access. Policies in other elements of the Comprehensive Plan help to provide a coordinated approach to human services in Bellevue.

The **Land Use** and **Transportation** Elements include policies on developing an environment that supports equitable access to human services.

Specific policies on the provision of affordable housing are included in the **Housing** Element.

The **Economic Development** Element addresses economic opportunity and quality education for all.

# IMPLEMENTATION

Bellevue implements the Comprehensive Plan through numerous actions, including day-to-day operations, capital investments, and review of new development projects. It would be impractical to list every action that will be taken to implement the plan and impossible to identify actions that may be taken in the future. The following list shows some of the relevant plans that implement Human Services Element.

Implementation Initiative	Type
<b>The Bellevue Human Services Needs Update</b> The Needs Update report identifies human services needs within the city and syncs human services funding with the biennial budget development.	<b>Funding:</b> updated biennially.
<b>Human Services Funding Program</b> Allocates city general fund and federal Community Development Block Grant funds to non-profit agencies providing human services to Bellevue residents.	<b>Funding:</b> on-going.

Page intentionally left blank.



Personal face-to-face review of this information with  
WA State Senator Patty Kuderer & Staff  
2018 in Senator's Bellevue WA Offices

# April 19, 2019 for Bellevue Planning Commission

Gun Shows WA State 2018-Bing Website Search: [Gun Shows in Washington State](#)

Page below website search revealed [26.8 MILLION Advertisements](#) demonstrating vast extent of unregulated/unregistered Firearms Sales in WA State.

Combined with the FACT (FBI Data Report) that **WA State has the 3<sup>rd</sup> WORST** level of **HATE CRIMES** in the U.S. (after Kentucky & Washington D.C.); and Nazi-KKK flyers have been distributed to grade-school neighborhoods in Bellevue, WA, there is **GREAT CAUSE FOR CONCERN**. Get the Point?? This is **unacceptable in America**.

gun shows in washington state

26,800,000 Results

**26,800,000 "results"**

[Washington Gun Shows - Gun Show Trader](#)  
<https://gunshowtrader.com/gunshows/washington>  
Featuring all gun shows, expos, events, and classes in WA for 2018. Find Washington gun shows ...

Sat, Feb 24	<a href="#">Big Top Tacoma Gun Show</a>	Marymount Event Center	Tacoma, WA
Sat, Feb 24	<a href="#">WAC Puyallup Gun Show</a>	Western Washington Fairgrounds	Puyallup, WA
Sat, Feb 24	<a href="#">Yakima Gun Show</a>	Central Washington State Fairgrounds	Yakima, WA

[Washington Gun Shows: dates, times, locations, and more ...](#)  
[www.washingtongunshows.com](http://www.washingtongunshows.com)  
VERIFIED Washington Gun Shows - updated throughout the week to be the most complete list of current 2017 and upcoming 2017 and beyond Washington Gun Shows with dates ...

[Washington Arms Collectors - Official Site](#)  
<https://washingtonarmscollectors.org>  
Washington Arms Collectors. ... 2018 Upcoming Gun Shows--Monroe - Evergreen State ... good and general welfare of people in the state of Washington and the Northwest ...

[Washington Gun Shows - 2018 Washington Gun Show Calendar](#)  
[www.gunshowmonster.com/gunshows/state.php?state\\_name=Washington](http://www.gunshowmonster.com/gunshows/state.php?state_name=Washington)  
The Gun Show Monster's Washington Gun Show Calendar is easy to use. Each listing includes the Title of the Event, the City and the State. To view more information on a particular event click on the title. Each Washington Gun Show Listing has descriptions, maps and multiple forms of contact. The Gun Show Monster works hard to provide quality events. If you have a Washington Gun Show you can ...

[2018 Washington Gun Shows - Washington Gun Show](#)  
[www.gunshowstoday.com/gunshows/category/washington](http://www.gunshowstoday.com/gunshows/category/washington)  
2018 Washington Gun Shows Schedule. Find gun show dates, Washington show locations and promoter and exhibitor information. Notice: Gun show dates are updated daily.

[WAC Puyallup Gun Show 2018 • Puyallup, Washington](#)  
[gunshowtrader.com](http://gunshowtrader.com) > [Gun Shows](#) > [Washington](#)  
4/18/19 ... "March for Our Lives" 2018 ...

**13 Pp. of 2018 WA Gun Shows**

**Question ? Any Background Checks Required for Purchase?**

**Where are our Database Records?**

**BELLEVUE CITY COUNCIL & CITY MANAGER** - The above information was also presented in February, 2018 in printed form with a Handout collection of pictures of Assault-Style Firearms available in Bellevue, WA stores or for on-line purchase and delivery to Teenagers. (Public Televised Forum during City Council Meeting)

THERE WAS NEVER ANY RESPONSE FROM BELLEVUE'S MAYOR, COUNCIL OR CITY MANAGER. Question: **What actions were taken, if any? If not, Why not? Did FBI** receive the data? Meanwhile Bellevue murders, shootings and gun violence mounts.

**Vernon Dwight Schrag 1106 108<sup>th</sup> Ave NE #302 Bellevue, WA 98004**

## Gulledge, Kristin

---

**From:** Chris Johnson <chris@bellevuechamber.org>  
**Sent:** Tuesday, October 20, 2020 12:37 PM  
**To:** PlanningCommission  
**Cc:** Johnson, Thara; Lewine, Janet  
**Subject:** Support for AFH Strategy Action C-1  
**Attachments:** Bellevue Chamber Support for AFH Strategy C-1.pdf  
  
**Importance:** High

**[EXTERNAL EMAIL Notice!]** Outside communication is important to us. Be cautious of phishing attempts. Do not click or open suspicious links or attachments.

Chair Moolgavkar and Commissioners - Thanks for the opportunity to provide written testimony relating to Affordable Housing Strategy Action C-1.

While we are currently in the middle of a public health and economic crisis, tens of thousands of new jobs are on the way to Bellevue. Now is the time to implement strategies that will generate additional housing for both income constrained households and the "missing middle." The Bellevue Chamber strongly supports implementation of Strategy C-1, which will serve the needs of households earning less than 60% AMI.

Please see our attached correspondence to Council from earlier this year in support of Action C-1. We agree with the recently issued SEPA Determination of Non-Significance (DNS) and urge inclusion of this policy in the Housing Element of the Comprehensive Plan.

Thanks for your consideration of our views. Best Regards - Chris

Chris Johnson | Director of Government Relations

**Bellevue Chamber of Commerce**

P: 425.213.1208 | F: 425.462.4660 | E: [cjohnson@bellevuechamber.org](mailto:cjohnson@bellevuechamber.org)

330 112<sup>th</sup> Ave. NE, Suite 100, Bellevue, WA 98004

 Reply all   Delete  Junk  Block ...

## Chamber Support for AFH Strategy C-1

CJ

Chris Johnson

Mon 7/20/2020 2:45 PM

To: council@bellevuewa.gov

Cc: Kate Berens; Cummins, Mac <MCummins@bellevuewa.gov>; King, Emil A. <EAKing@bellevuewa.gov>

Bcc: Johnson, Thara <TMJohnson@bellevuewa.gov>; Lewine, Janet <JLewine@bellevuewa.gov>; Joe

    ...

Mayor Robinson - Tonight, Council will undertake a study session relating to Affordable Housing Strategy Action C-1. The Bellevue Chamber applauds Council for considering next steps under this strategy, and we offer our support for allowing density on government and church owned properties to help alleviate the affordable housing crisis, when the impacts of additional density can be mitigated.

We ask Council to consider a Comprehensive Plan amendment and associated code changes in support of Strategy C-1. The Chamber looks forward to participating in any public engagement opportunities relating to these initiatives.

Thanks for taking into account our views. - Chris

Chris Johnson | Director of Government Relations

**Bellevue Chamber of Commerce**

P: 425.213.1208 | F: 425.462.4660 | E: [cjohnson@bellevuechamber.org](mailto:cjohnson@bellevuechamber.org)

330 112<sup>th</sup> Ave. NE, Suite 100, Bellevue, WA 98004