

# Planning Commission Retreat 2020

---



November 4, 2020



# Agenda

---

- Introductions/ Welcoming Remarks/ Accomplishments
- Zoom Virtual Challenge
- Equity in Planning Approaches
- Planning Commission Role & Guiding Principles
- Looking Forward – Strategic Initiatives
- Employment Trends and Impacts from COVID-19
- Summary & Closing Remarks





# Zoom Virtual Challenge

---

November 4, 2020

# Approaches to Equity in Planning

---



November 4, 2020

# Languages Spoken

## Top Ten Languages other than English Spoken at Home in Bellevue.

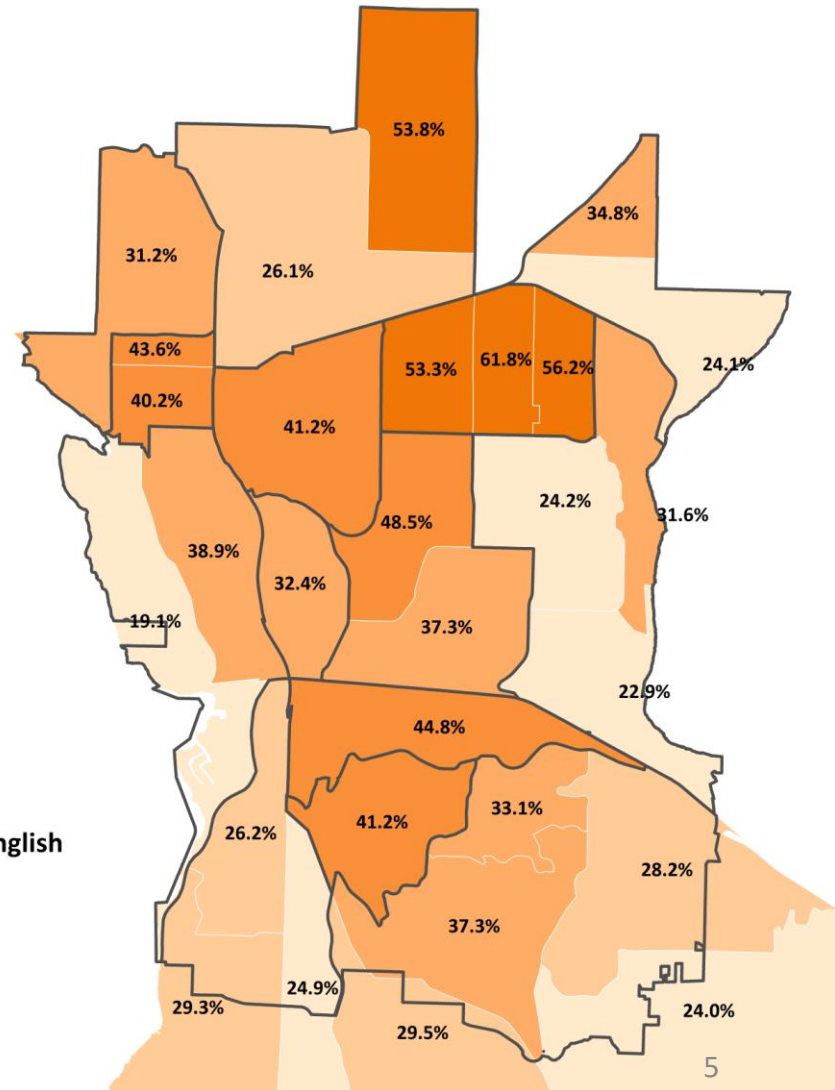
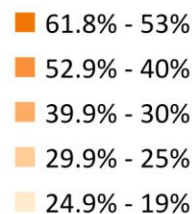
1. Chinese
2. Spanish
3. Korean
4. Hindi
5. Russian
6. Japanese
7. French
8. Persian
9. Vietnamese
10. Tagalog

*In 2013, about **41** percent of Bellevue's population 5 and over spoke a language other than English at home.*

*Over **87** different first languages were spoken by children in Bellevue School District.*

Source: U.S. Census Bureau, 2011-2013 American Community Survey

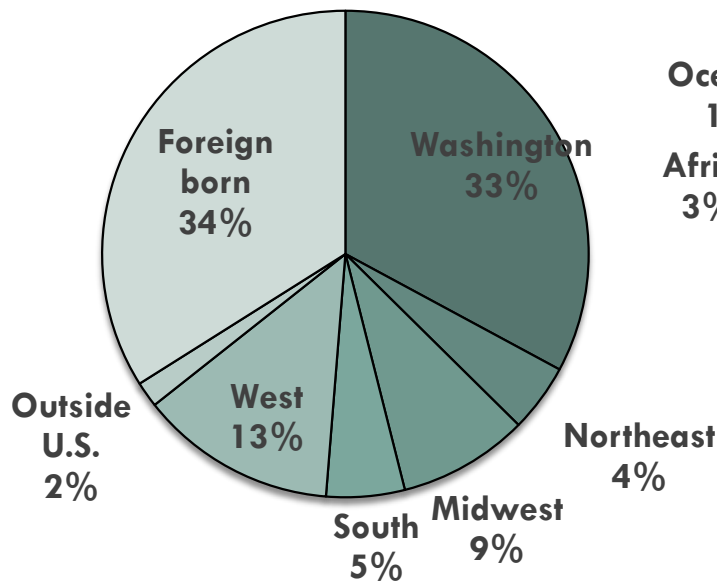
### Pct Lang other than English



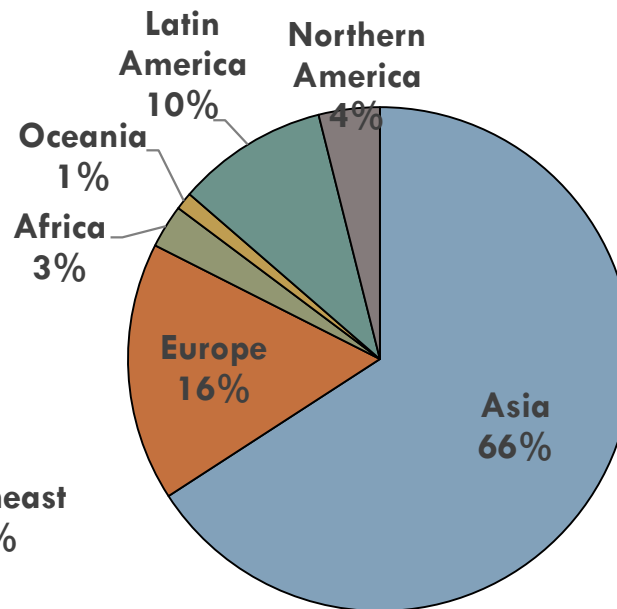
# Place of Birth

About a third of Bellevue's residents were born in Washington State, another third in a different U.S. state, and another third were born in a foreign country.

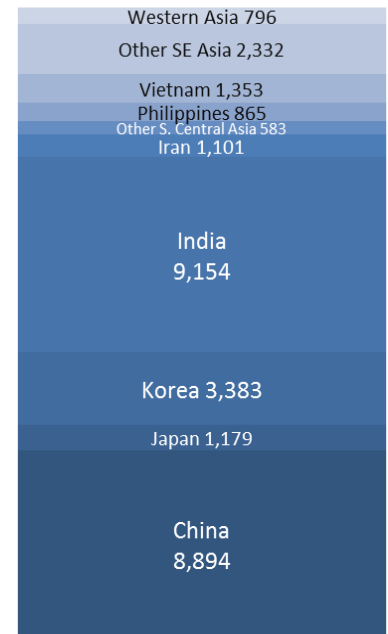
**Place of Birth (2009-2013)**



**World Region of Birth for the Foreign-Born Population (2009-2013)**



**Asian Pop., Place of Birth**



# TITLE VI

## City of Bellevue Title VI Policy of Nondiscrimination

The City of Bellevue assures that no person shall on the grounds of race, color, national origin, or sex, as provided by Title VI of the Civil Rights Act of 1964, and the Civil Rights Restoration Act of 1987 (P.L. 100.259) be excluded from participation in, be denied the benefits of, or be otherwise subjected to discrimination under any City sponsored program or activity. The City of Bellevue further assures every effort will be made to ensure nondiscrimination in all of its



programs and activities, whether or not those programs and activities are federally funded.

### What is Title VI?

Title VI of the Civil Rights Act of 1964 is a federal law that prohibits discrimination on the basis of race, color, national origin, or sex by any program receiving federal assistance.




### What does Title VI Protect Against?

Discrimination on the basis of race, color, national origin, or sex can limit the opportunities of individuals

Residents who need interpretation assistance for any city-related services, may now call the following numbers:

Español	1-844-590-8948	Spanish
Tiếng Việt	1-844-590-8949	Vietnamese
한국어	1-844-537-0365	Korean
Русский	1-844-590-8947	Russian
廣東話	1-844-537-0364	Cantonese
普通话	1-844-590-8945	Mandarin
ਪੰਜਾਬੀ	1-844-590-8946	Punjabi



 For alternate formats, interpreters, or reasonable accommodation requests please phone at least 48 hours in advance 425-452-6168 (voice) or email [ADATitleVI@bellevuewa.gov](mailto:ADATitleVI@bellevuewa.gov). For complaints regarding accommodations, contact City of Bellevue ADA/Title VI Administrator at 425-452-6168 (voice) or email [ADATitleVI@bellevuewa.gov](mailto:ADATitleVI@bellevuewa.gov). If you are deaf or hard of hearing dial 711. All meetings are wheelchair accessible.

## CITY OF BELLEVUE DIVERSITY ADVANTAGE PLAN

**Guiding Principles:**  
*Enrich the quality of life for all  
through...*



### **Access:**

Build an environment that values the abilities of all, by proactively removing barriers and providing accommodations for full participation.



### **Equity:**

Create a fair and just community where equality is the outcome by recognizing and correcting historic and systemic inequity.



### **Inclusion:**

Foster a welcoming city, by providing a safe and gracious space where the entire community can engage in civic life.



### **Opportunity:**

Share prosperity by connecting residents, schools, businesses, faith and non-profits to work together for the common good.



### **Understanding Cultural Competence:**

Produce equitable policies and practices, by developing skills and knowledge that facilitate effective interactions across diverse cultures.



### **and always Why:**

"Bellevue welcomes the world. Our diversity is our strength. We embrace the future while respecting our past."

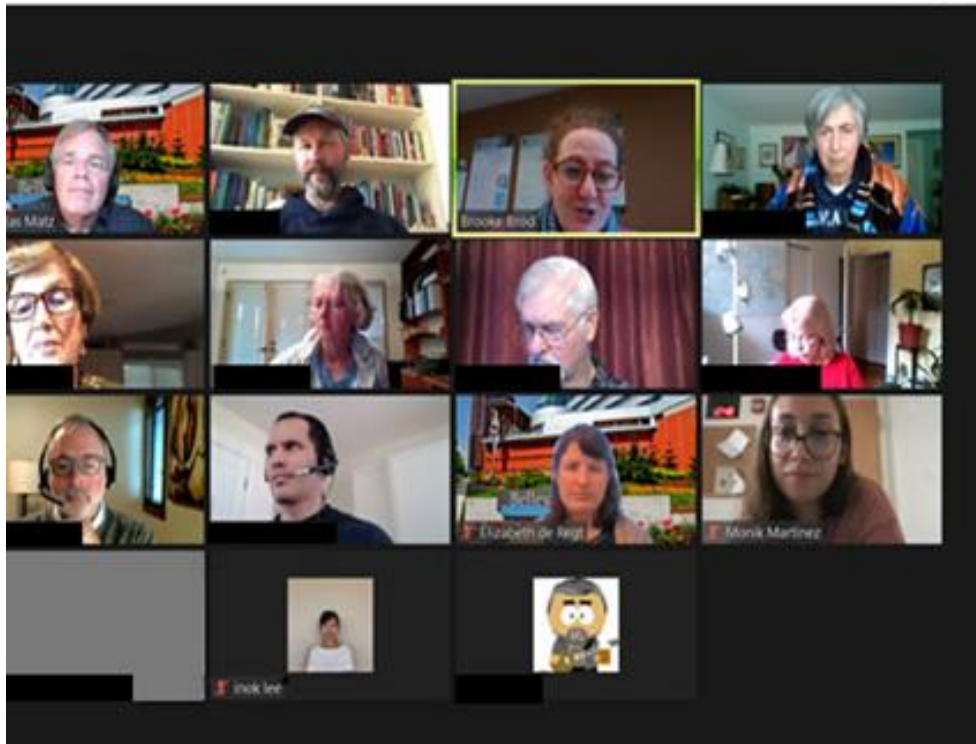
Council Vision 2014

## EQUITY LENS

### Who is at the table to inform decision-making?

1. What groups benefit/are impacted positively from this policy, service, or practice?
2. What groups may be negatively impacted by this policy, service or practice?
3. Think about equity, inclusion, access –are there disproportionate outcomes for groups? (e.g. communities of color, refugee/immigrants, socio-economic, people living with disabilities, gender/gender identities)
4. What are strategies/actions needed (from you, your department) to create opportunity to reduce disparities

# Community Engagement



- Cultural Outreach Assistants:
  - Scheduled 4 presentations through January 2021
  - 22 survey responses in Chinese
  - 19 survey responses in Korean
- Translation of project materials into different languages
- Optional demographic questions on surveys
- Youth outreach

# Discussion: Approaches to Equity in Planning

---

- Trying new tools and approaches relating to equity
- Elements specific to Planning Commission process/engagement
- Feedback loops to measure outcomes and successes
- Other?



# **Planning Commission Role & Guiding Principles**

---

November 4, 2020

# Role of the Commission

---

- Recommendations to the City Council on changes to the City's Comprehensive Plan and Land Use and Development Code.
- Legislative process for Comprehensive plan map and text changes and zoning map and text changes, as well as subarea and district plans that will adopted by reference into the Comprehensive Plan.
- Tasked with considering the long-term growth and development of the City.
- Considering the impact of land use decisions on community livability, economic opportunity, housing affordability, public services, and the environment.
- Long term community perspective to land use policy.
- Responsible for maintaining an accessible process that informs and educates the public.



# Discussion: Commission Role and Guiding Principles

---

- What is working well?
- Timing for policy discussions with the Commission
- Opportunities for improvement/ collaboration
- Other?



# Looking Forward

---

## Strategic Initiatives

November 4, 2020

# Discussion: Strategic Initiatives

---

- General understanding of process for initiatives (e.g. Vision, CPA, LUCA)
- Learning opportunities related to future Commission work
- Ready for Major Comprehensive Plan Update scoping to occur in 2021
- Other?



# Employment Trends and Impacts from COVID

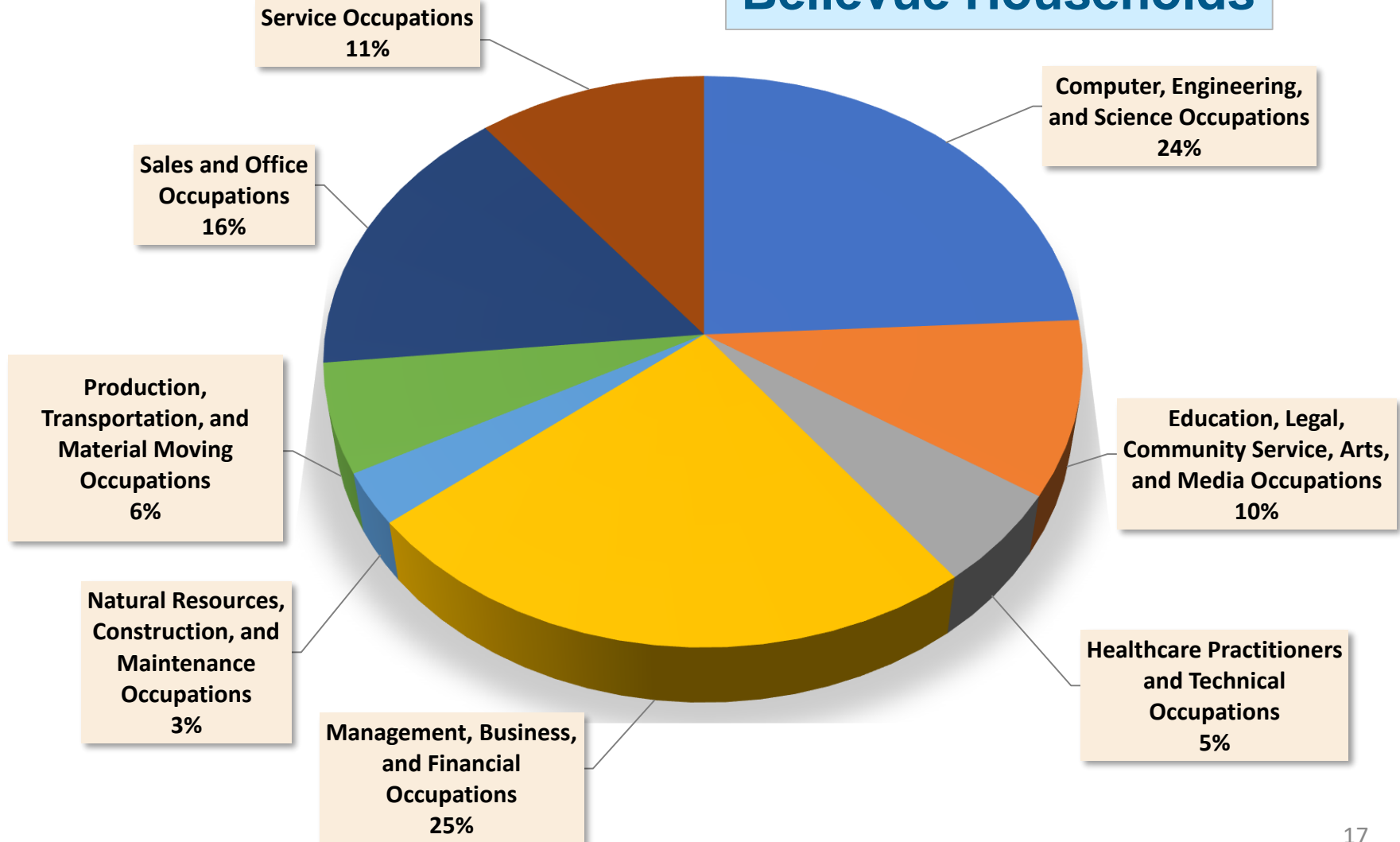
---

November 4, 2020

# Work from Home by Occupation

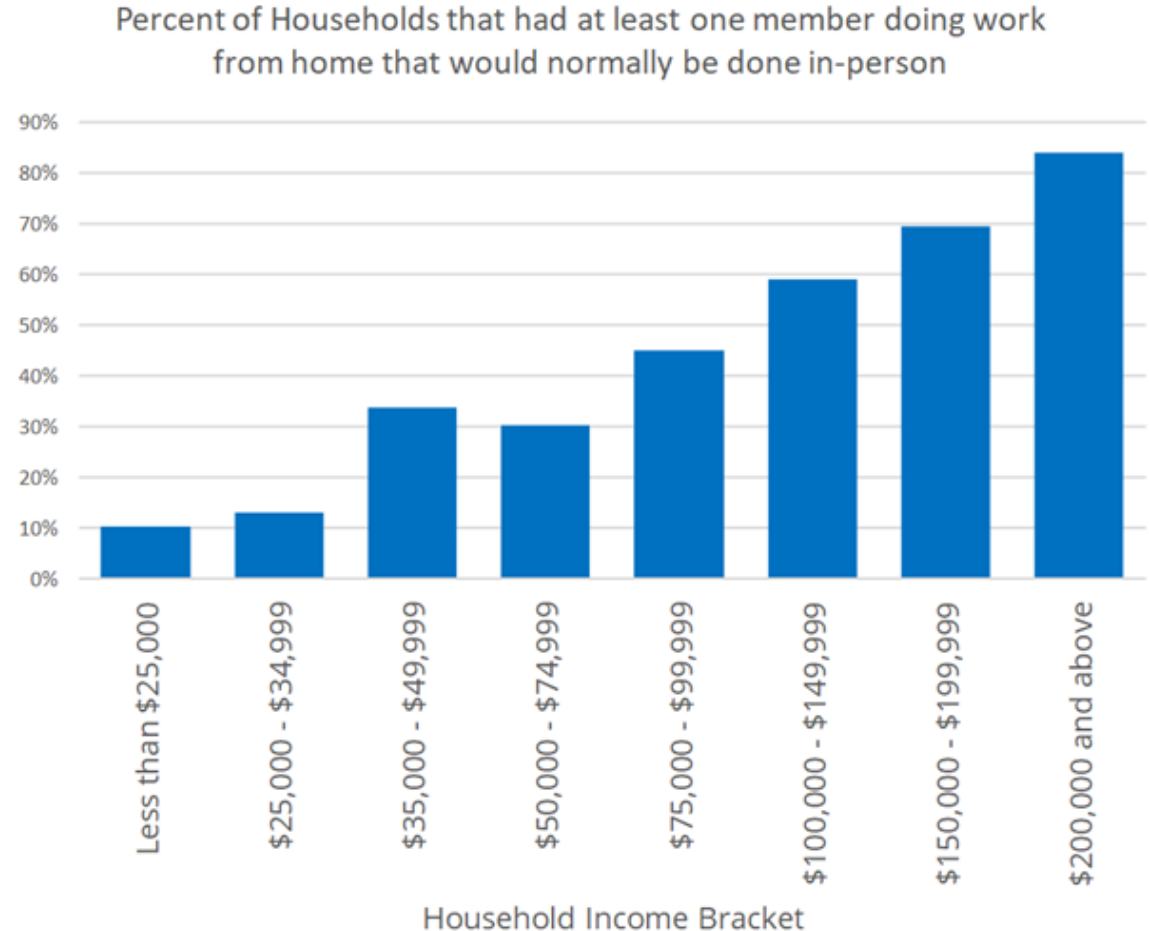


## Pre-COVID Data for Bellevue Households



# Work from Home by Income

Data from  
October 2020  
for larger  
Metro Area



Source: US Census Bureau. 2020. Household Pulse Survey, week 16. Transportation tables, table 1.

# Economic Trends

---

## Employment:

- Affecting lowest earning populations the most
- Signs of unemployment going down from high in April

## Tourism:

- Significant year to year impact in hotel occupancy and visitor counts

## Office Market:

- Vacancy rates relatively low
- Office rents have seen little change
- Indications that Bellevue's office market remains strong



# Development Activity

---

- Development review very busy; includes large, complex projects
- By in large, major development projects continue to proceed (see Downtown and BelRed major projects lists)
- Amazon-related growth significant component of development
- Focused in and around light rail station areas



# Discussion: Employment Trends/ COVID Impacts

---

- Thoughts on longer-term implications of COVID (amount and type of growth, transit use and other modes)
- Support for residents, businesses, non-profits
- Considerations for Commission/ Staff work moving forward
- Other?



# Planning Commission Retreat 2020

---

## Closing Remarks

November 4, 2020