



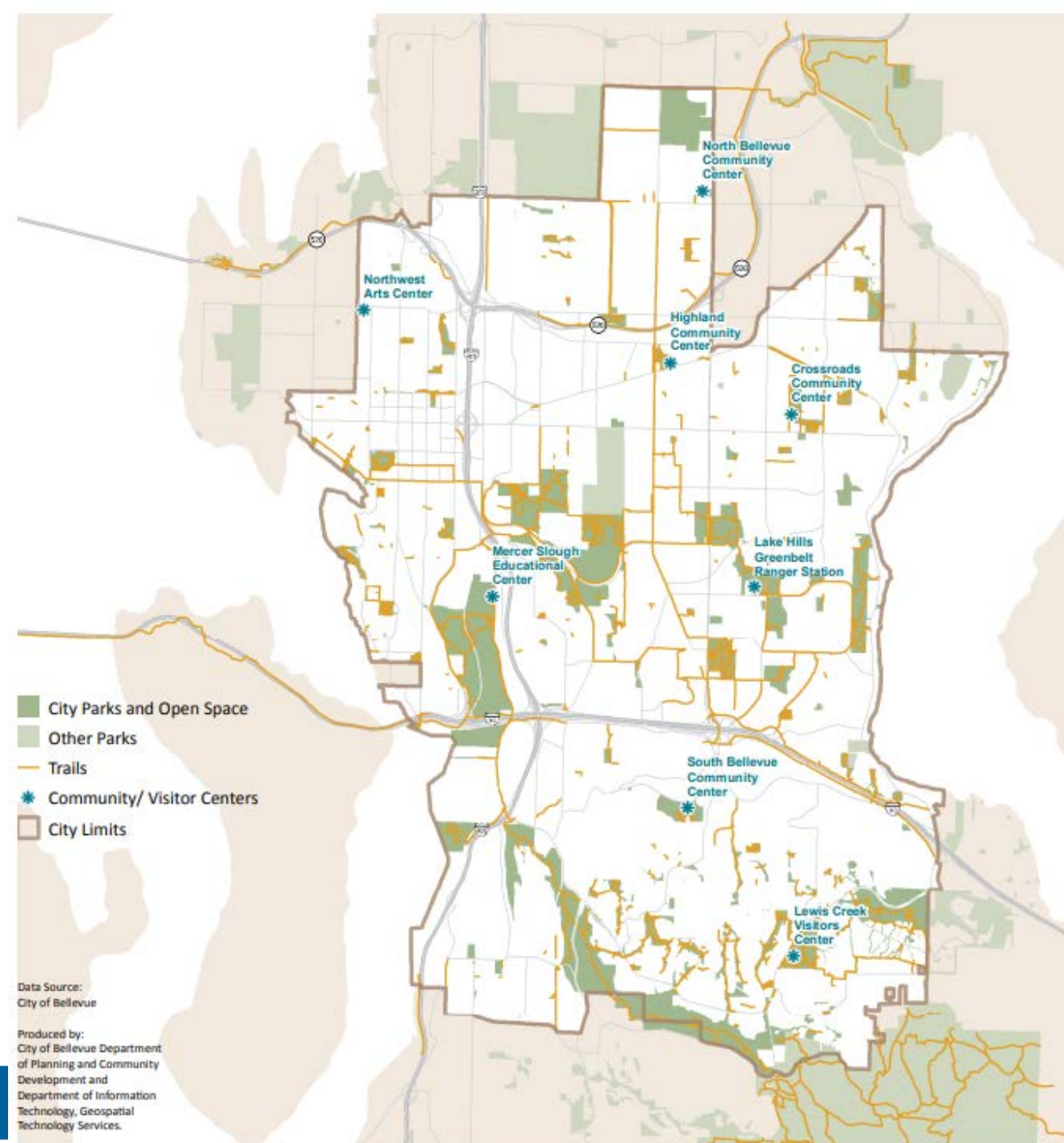
Park Property Acquisition Program

Camron Parker, Parks Property & Acquisition Manager
Bellevue Parks & Community Services



City of Bellevue

Today's Park System





Bellevue Parks &
Community Services

STRATEGIC PLAN

2020 Edition



VISION

In Bellevue everyone can connect to each other and to nature through experiences that help them to live, grow, and thrive.

MISSION

We build a healthy community through an integrated system of exceptional parks, natural areas, recreation, arts and culture, and a broad base of community services.

EQUITY: A SYSTEM OF FAIRNESS

Equity acknowledges and removes disparities in opportunities, power, and resources so that everyone can reach their full potential to thrive. Bellevue Parks & Community Services practices equity, which is the responsibility of every individual in the department. Equitable access is a right, not a privilege, and is fundamental to our mission of serving all people. Through equitable policies and practices, we cultivate ties that connect people to the fabric of our community.





BELLEVUE COMPREHENSIVE PLAN



PARKS, RECREATION & OPEN SPACE VISION

BELLEVUE IS A “CITY IN A PARK.”

Bellevue has a system of parks, open spaces, cultural facilities, and recreational amenities throughout the city. These provide abundant access to natural beauty and extraordinary experiences to define a lifetime of recreation and learning.



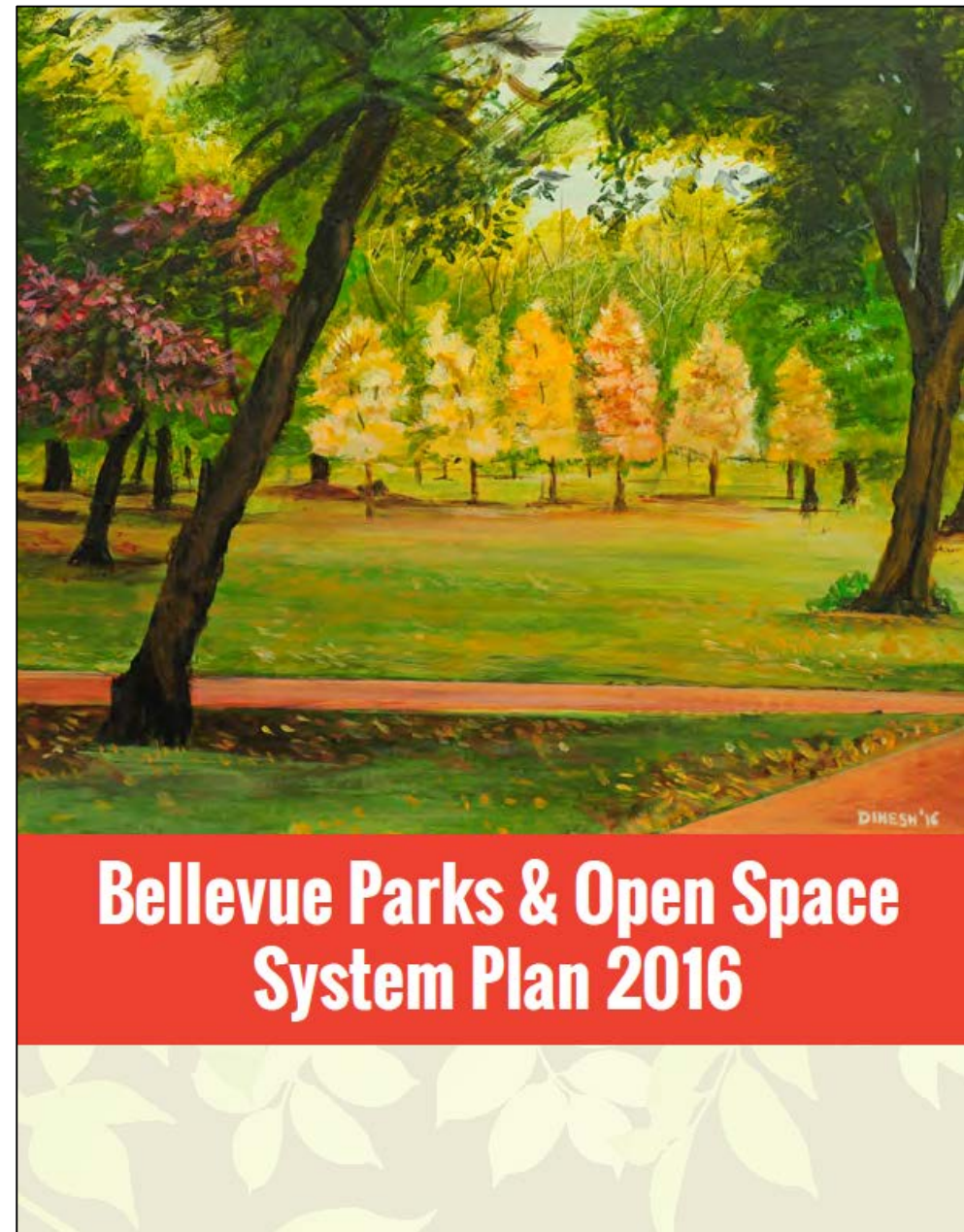
Policy Guidance

- PA-1.** Establish a coordinated and connected system of open space and greenways throughout the city that provide multiple benefits including preserving natural systems, protecting wildlife habitat and corridors, and providing land for recreation.
- PA-2.** Obtain land throughout the community to meet present and future parks and open space needs.
- PA-5.** Obtain, for preservation, natural areas that are sensitive to urbanization or represent a valuable natural and aesthetic resource to the community.
- PA-6.** Acquire and develop waterfront property to increase public access to Bellevue's lakes.



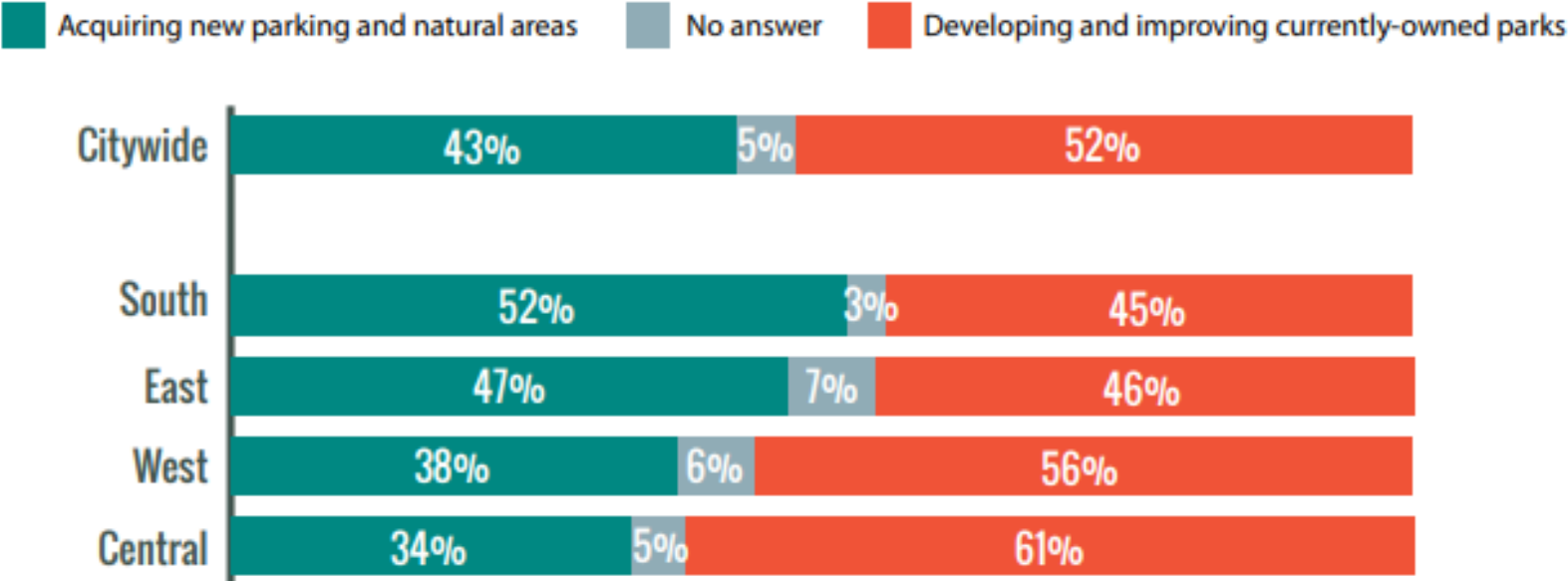
Policy Guidance

Priority will be placed on acquiring land adjacent to existing parkland, along shorelines, environmentally sensitive land, or linkages that provide connections between parks and open space areas. Priority will also be placed on increasing park access for neighborhoods with limited access to parks.



Public Feedback (2015)

Future Investment Priorities



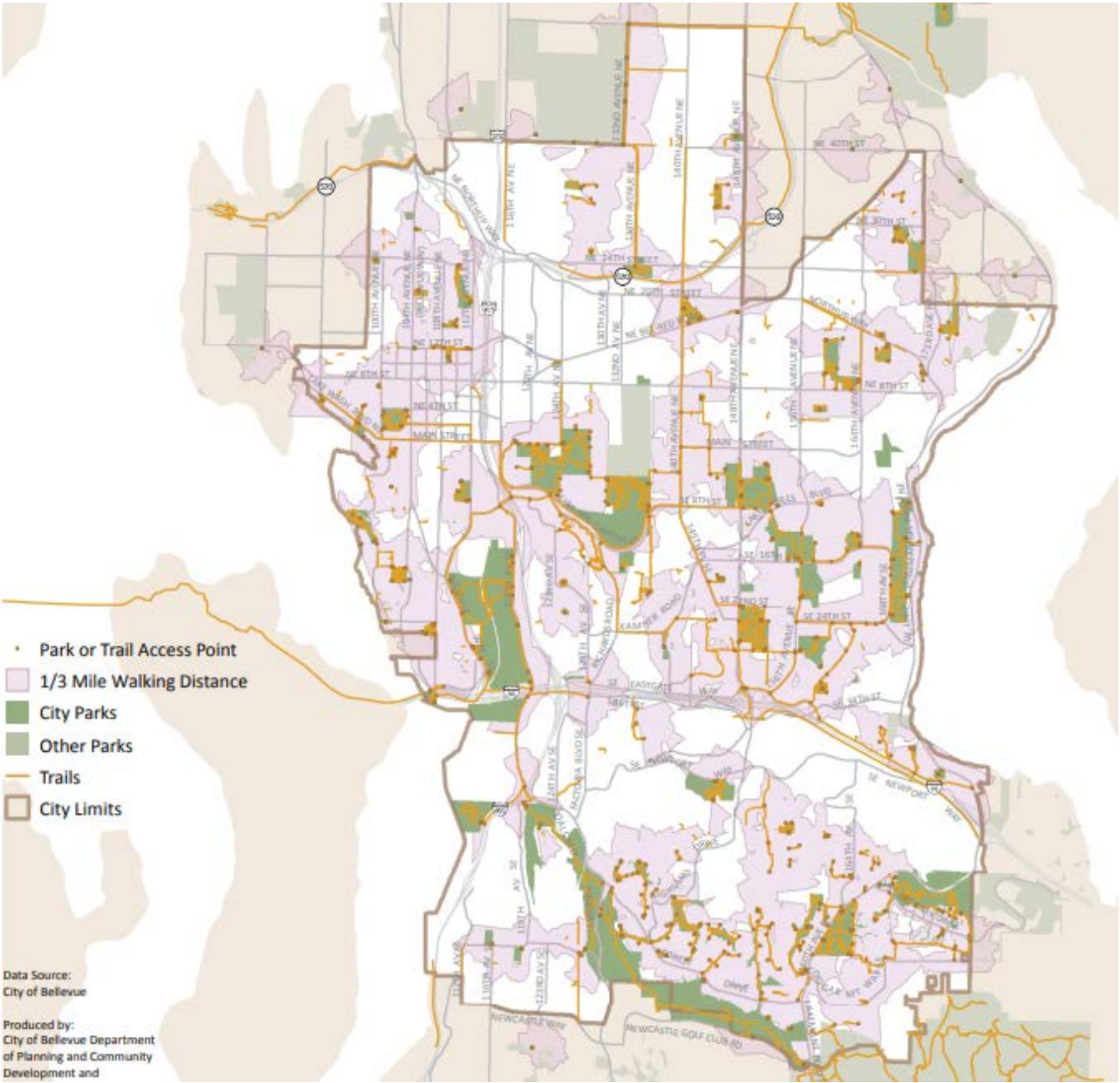
2015 Survey Q11. Bellevue Parks & Community Services acquires and develops new parks, and improves and redevelops existing park sites. Given what you know about the parks system, over the next ten years, should City investments be focused more on the acquiring parkland and natural areas or focused more on development and improving currently-owned parks?



Bellevue Parks & Open Space
System Plan 2016



Walkable Access



Funding Sources

- **Common Sources**

- Voter Initiatives (2008)
- Real Estate Excise Tax (REET)
- Leveraged Funds

- **Leveraged Funds**

- Private donations of land value
- King County Conservation Futures Program
- King County Parks Levy
- State Recreation and Conservation Office Grants
- State Grants or Appropriations
- Federal Land & Water Conservation Fund

Acquisition Priorities

- Fill access gaps in neighborhoods
- Urban Park System
 - Downtown
 - Bel-Red
 - Eastgate/Factoria Commercial Area
- Waterfront Access
 - Lake Sammamish
- Expand existing parks
- Greenways & Corridors
 - Lake to Lake Trail
 - Grand Connection
 - Bel-Red Corridor
 - Eastrail
 - West Lake Sammamish





Case Studies



City of Bellevue

Mercer Slough

Duff Estate Property



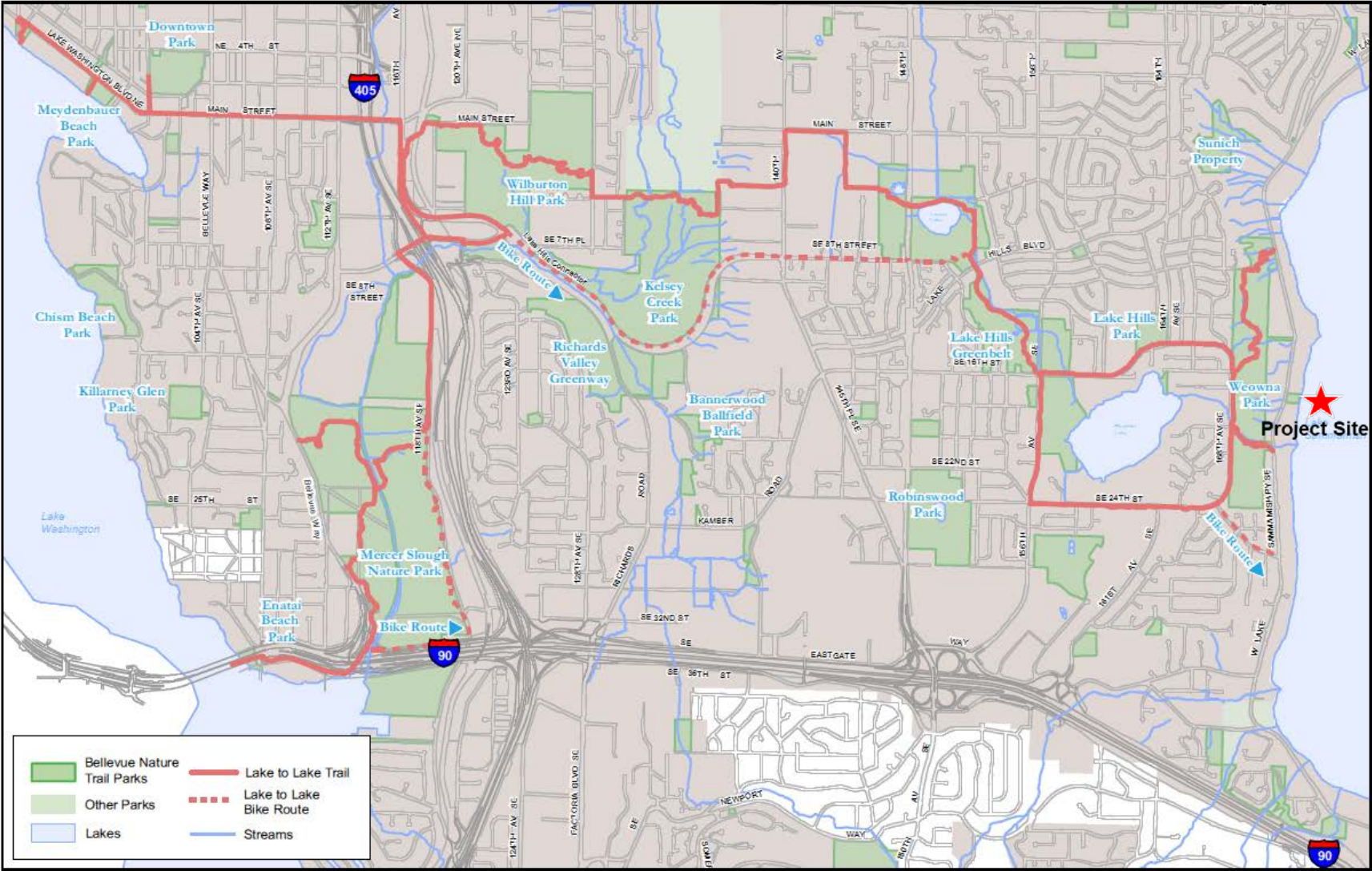
City of Bellevue

Lake Sammamish Property



City of Bellevue

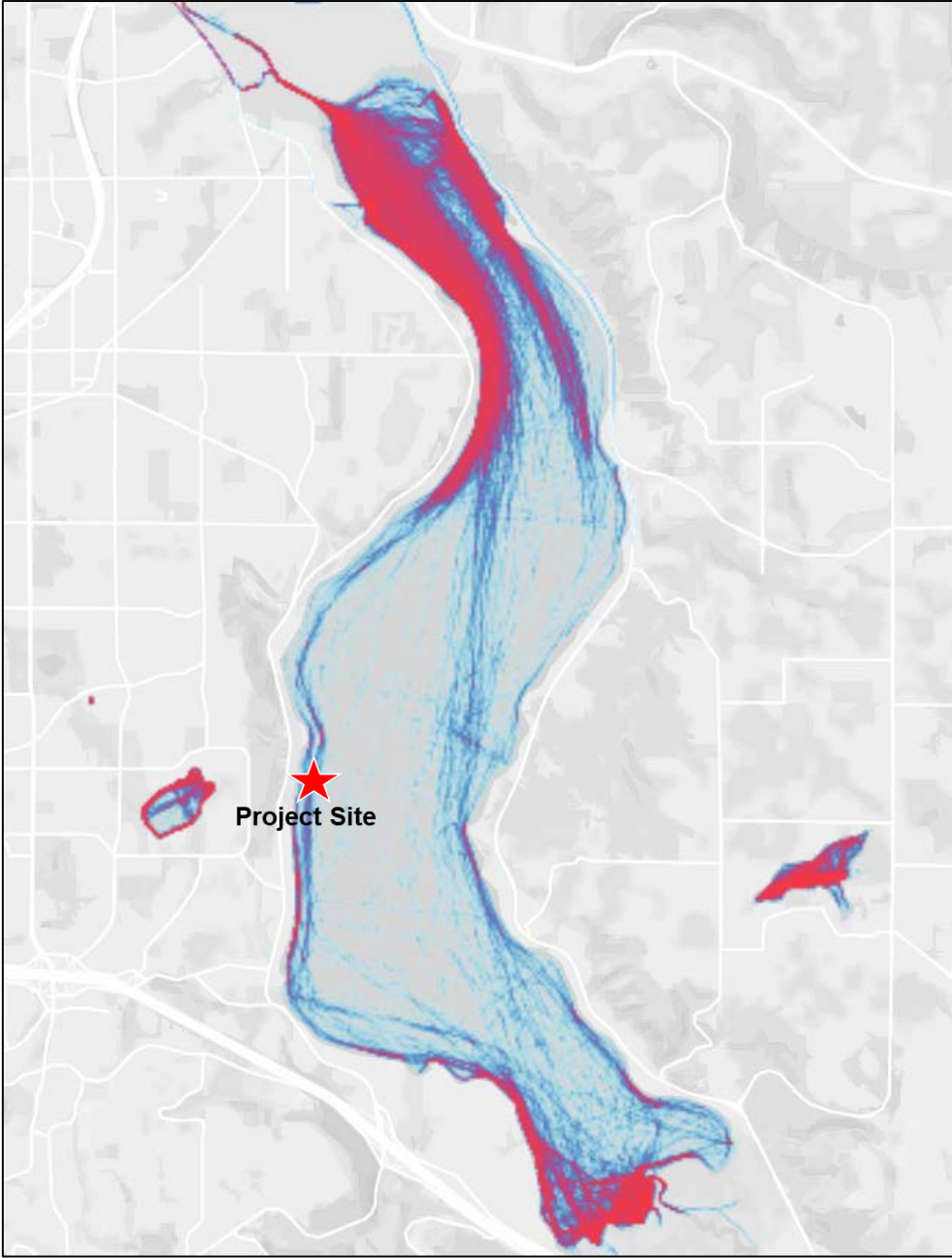
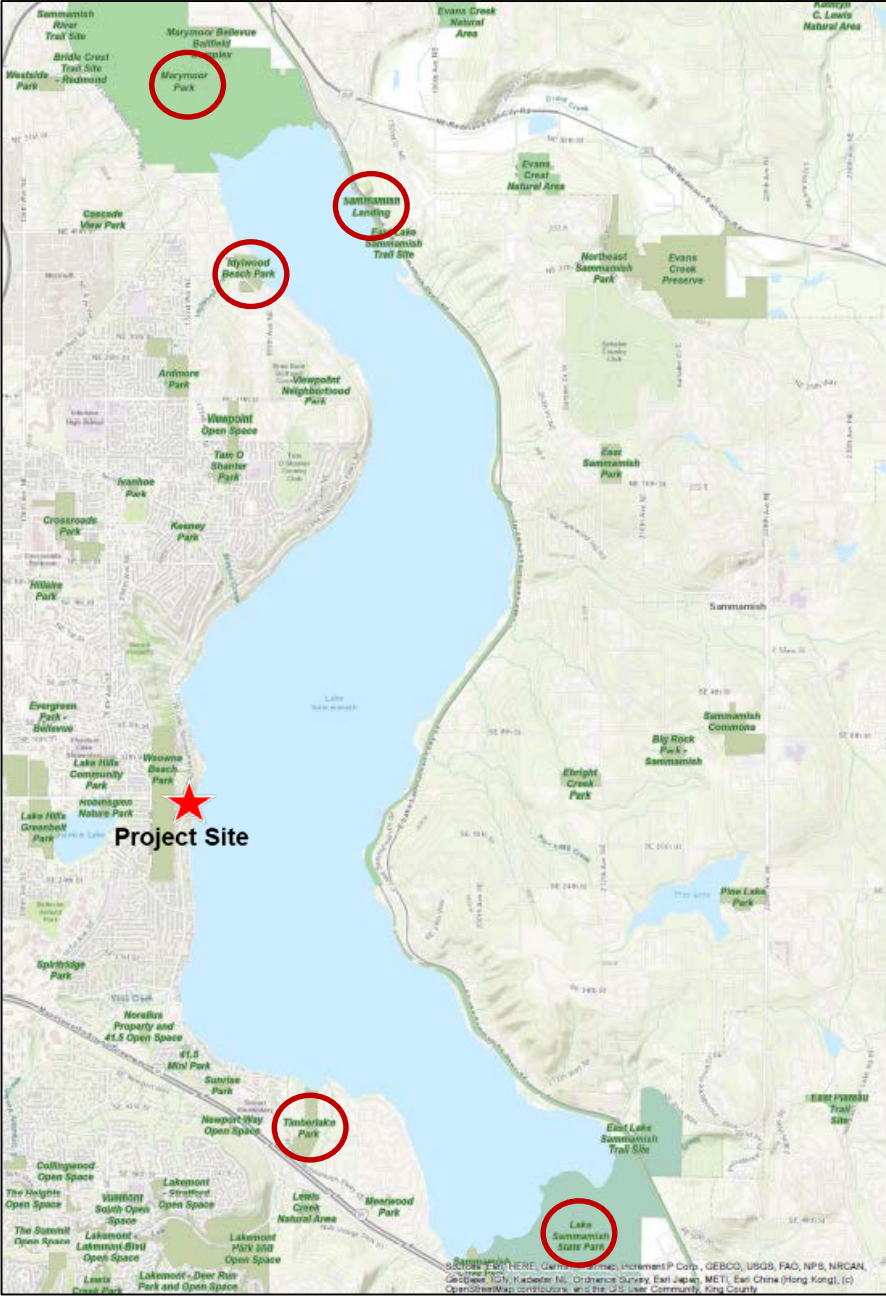
Lake to Lake Greenway Trail



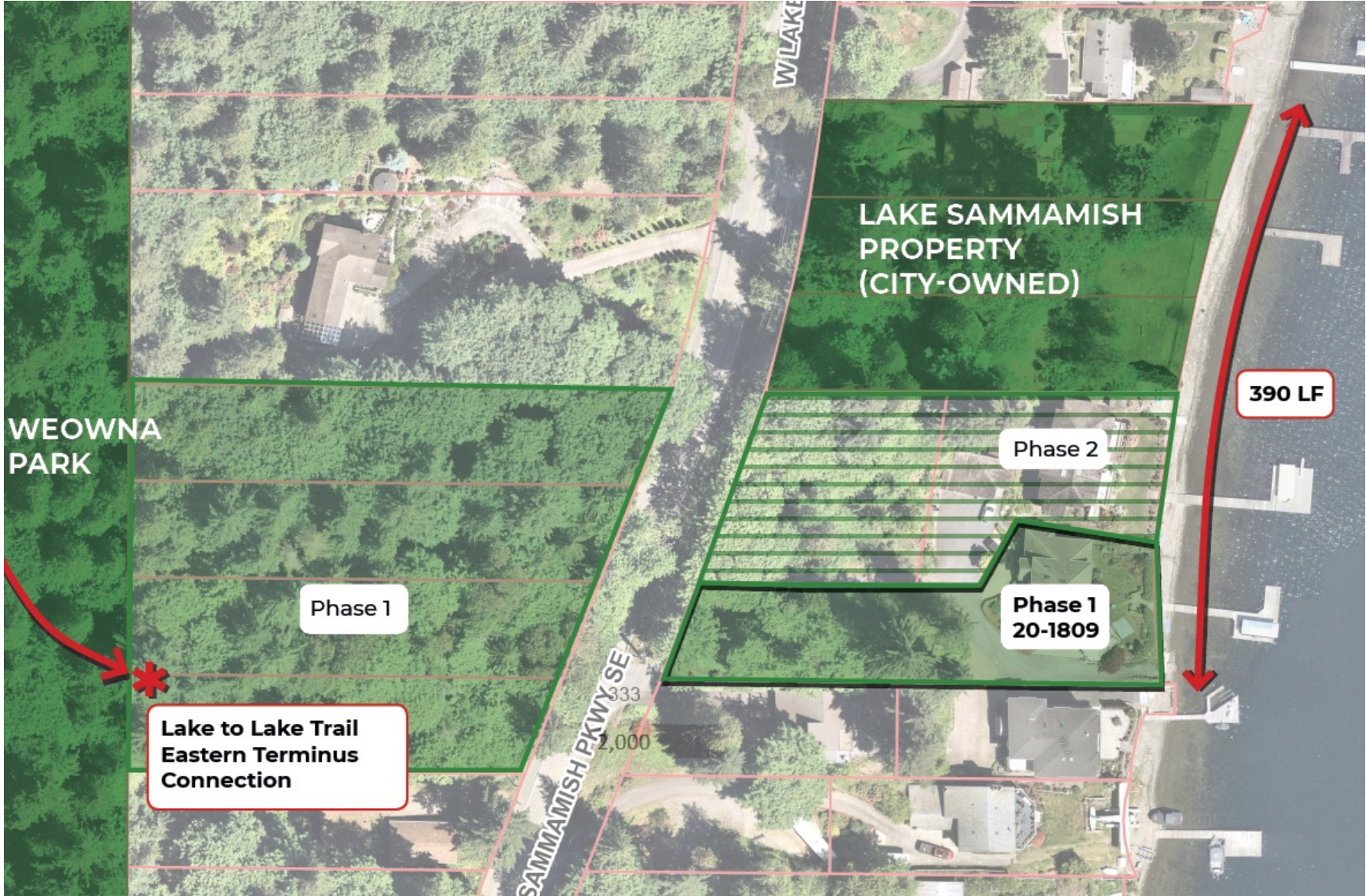
0.5 miles



Lake Sammamish Recreation



Site Location





**Phase 1: Immediate
Acquisition**
95' waterfront

**Phase 2: Secured
Future Acquisition**
100' waterfront

Existing City Property
195' waterfront



Site Concept



CONCEPT PLAN

WEST LAKE SAMMAMISH PARK



LEGEND

- Phase 1: Proposed acquisition
- Phase 2: Secured future acquisition
- Phase 1: Immediate acquisition with other funds
- Existing City of Bellevue property



