

Environmental Outreach in a Covid-19 Environment

Nav Otal, Director

Erin Hislop, Conservation and Outreach Administrator
Utilities

January 25, 2021



Direction Needed from Council

- No action by Council is required. This is an informational briefing on the City's solid waste diversion outreach efforts.



Agenda

1. Reaching Residents
(single family and multifamily)
1. Assisting Multifamily Properties
2. Assisting Businesses
3. Supporting Distanced Learning and Bellevue Youth
4. Planning For The Future



Reaching residents: In-person workshops redesigned into virtual formats

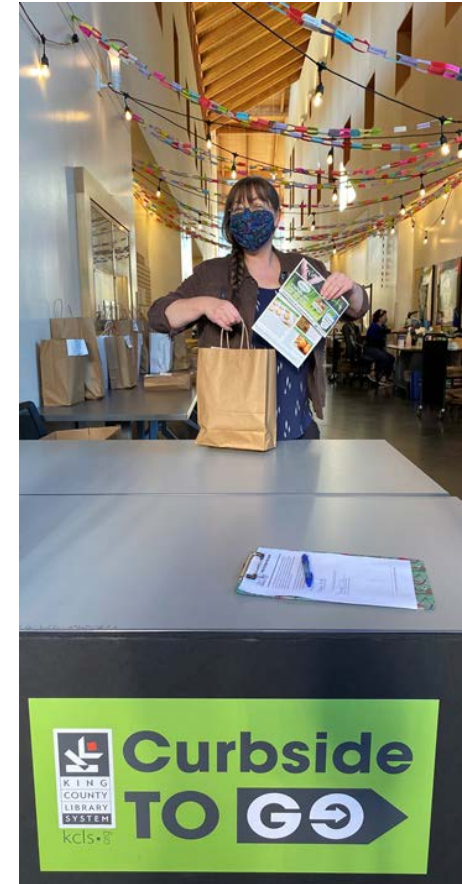
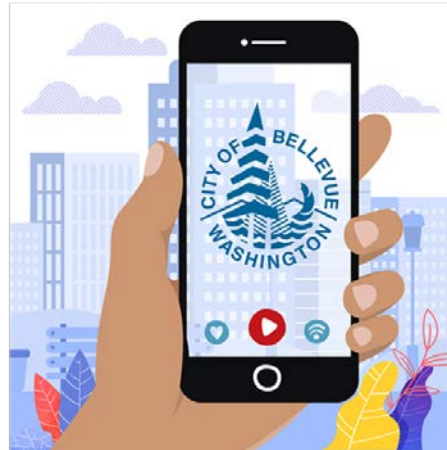


Reaching residents: Curbside pickup opportunities



Reaching residents: Creative partnerships

The Great Bellevue Scavenger Hunt October 2-30, 2020



Assisting multifamily properties: Virtual and contactless support



Assisting multifamily properties: Increasing composting



Assisting multifamily properties: Reaching families



ZERO WASTE CHALLENGE AT HOME PLEDGE

Display
at
Home

LEARN

I will find out what is recyclable in my Bellevue home by visiting www.bellevuewa.gov/recycleright

REDUCE AND REUSE

I will reduce garbage by trying three waste reduction or reuse actions at home, by the end of the month.

1. _____
2. _____
3. _____

RECYCLE RIGHT

I will only recycle clean, empty and dry items. I will make sure boxes are flattened before placing in the recycling bin.

SHARE (optional)

With permission from an adult, email a photo or example of how you reduced waste to recycle@bellevuewa.gov by December 1. You will be entered for a drawing on December 2 for a chance to win a reusable sandwich bag made from recycled plastic bottles.



Assisting businesses: Cost saving actions

For Businesses

Recycling help during COVID-19

Your Bellevue business' solid waste streams may look different while operating under reduced capacity during COVID-19. Bellevue Utilities staff are available to help!

Contact recycle@bellevuewa.gov or 425-452-6197 to request support with waste reduction and recycling options that may help at this time, including:

- Recommendations for right-sizing your outdoor waste bins or frequency of service to help save money
- Staff training and signage to help with properly sorting recyclables to reduce waste and avoid increased garbage costs
- Other personalized assistance with waste reduction and recycling solutions that can benefit your business and our environment



Assisting businesses: Virtual and contactless support



Assisting businesses: Outreach to food-generators



Supporting distanced learning: Virtual classroom curriculum




Supporting distanced learning: Home activity guides




Planning for the future: Systemic approaches

- Zero Waste Events
- Facilities and infrastructure





ZERO WASTE PUBLIC EVENT GUIDE



Garbage and recycling services are REQUIRED at ALL events, and composting services for food scraps and compostable materials are REQUIRED for any event with food service. Garbage, recycling, and composting collections are provided by Republic Services for events. Zero waste of resources is a goal of the City of Bellevue. Follow this guide to set up garbage, recycling, and composting services and avoid unnecessary waste at your event.

It is the responsibility of the event organizer to coordinate waste services before, during, and after the event.

To order containers and arrange for services at a temporary event, call **Republic Services Customer Service**, 425-646-2492. For additional information and assistance, call **Bellevue Utilities**, 425-452-6932, or email recycle@bellevuewa.gov.

BEFORE THE EVENT

Determine quantity of waste stations needed

Ask Republic Services for guidance on calculating the number of waste stations needed for your event. Plan to place waste stations in highly visible, convenient locations such as entry and exit points to the event and near restrooms, food vendors, and tables where people will eat. For large events, additional carts may be needed along main walking paths.

Order waste stations and service

- To have garbage, recycling, and composting containers delivered in time, contact Republic Services Customer Service at least two weeks in advance of your event.
- For pricing, go to [RepublicServices.com/municipality/bellevue-wa](https://www.bellevuewa.gov/municipality/bellevue-wa) and scroll down to Rates/Special Event Rates.
- Your event will be billed the first week of the following month; no deposit required.

Determine the proper size container

Containers are 96-gallon carts, but can be smaller upon request. Republic Services does not usually empty carts or dumpsters throughout an event. For events that last longer, smaller bins are recommended for staff/volunteers who may need to empty the bins into dumpsters throughout the event.

Republic Services will deliver carts to a drop-off point at the event site. Event organizers are responsible for moving the carts to the desired locations and returning the carts to the drop-off point at the end of the event. If necessary, staff/volunteers can place waste from carts and their own bins into on-site dumpsters. At the end of the event, Republic Services will pick up the dumpsters as well as any additional full carts.

If the event occurs on a Saturday or Sunday, event organizers need to coordinate cart delivery on the Friday prior and removal for the Monday after the event.