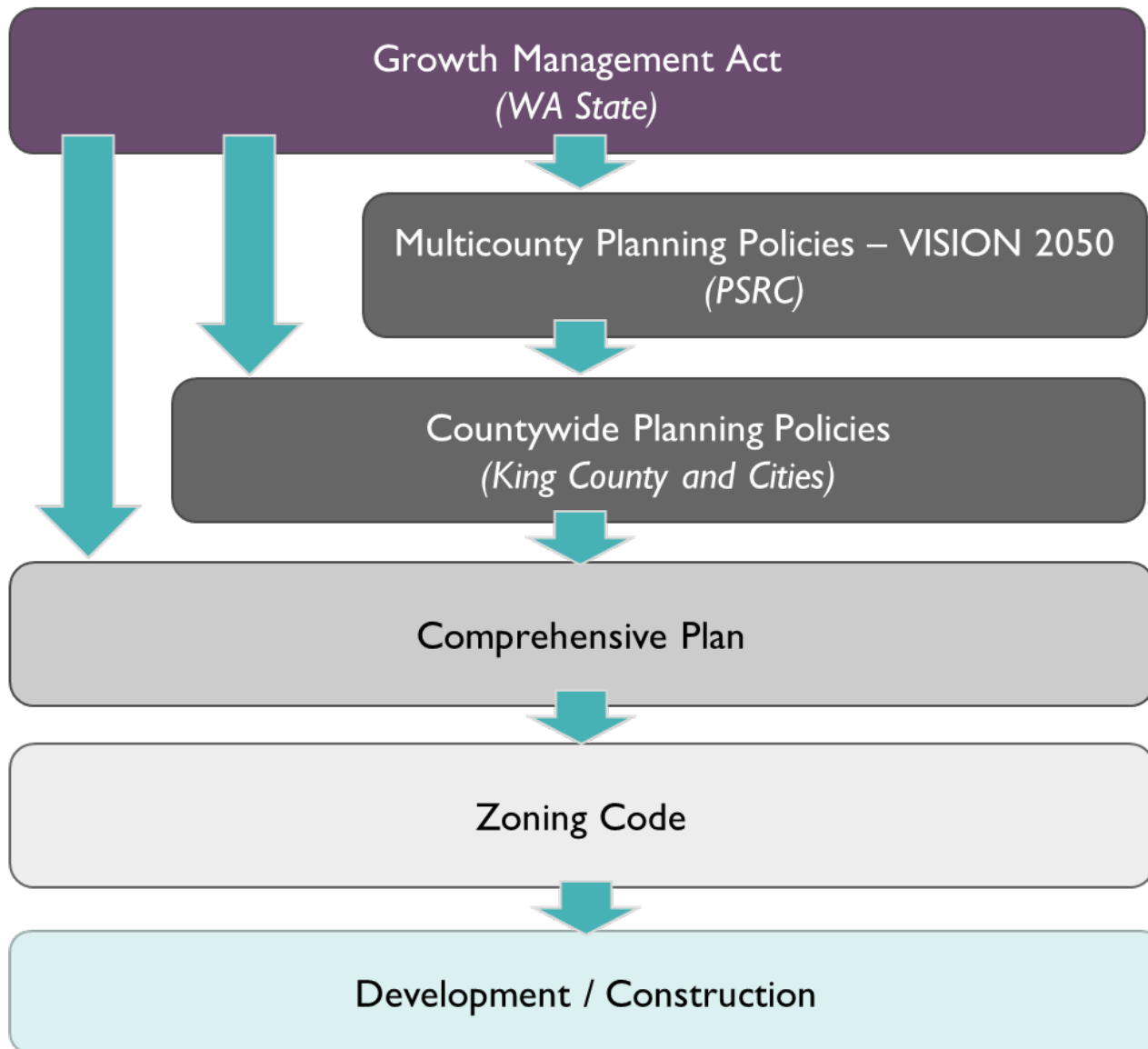


---

# KING COUNTY DRAFT COUNTYWIDE PLANNING POLICIES & DRAFT UGC REPORT

*BELLEVUE CITY COUNCIL  
APRIL 26, 2021*

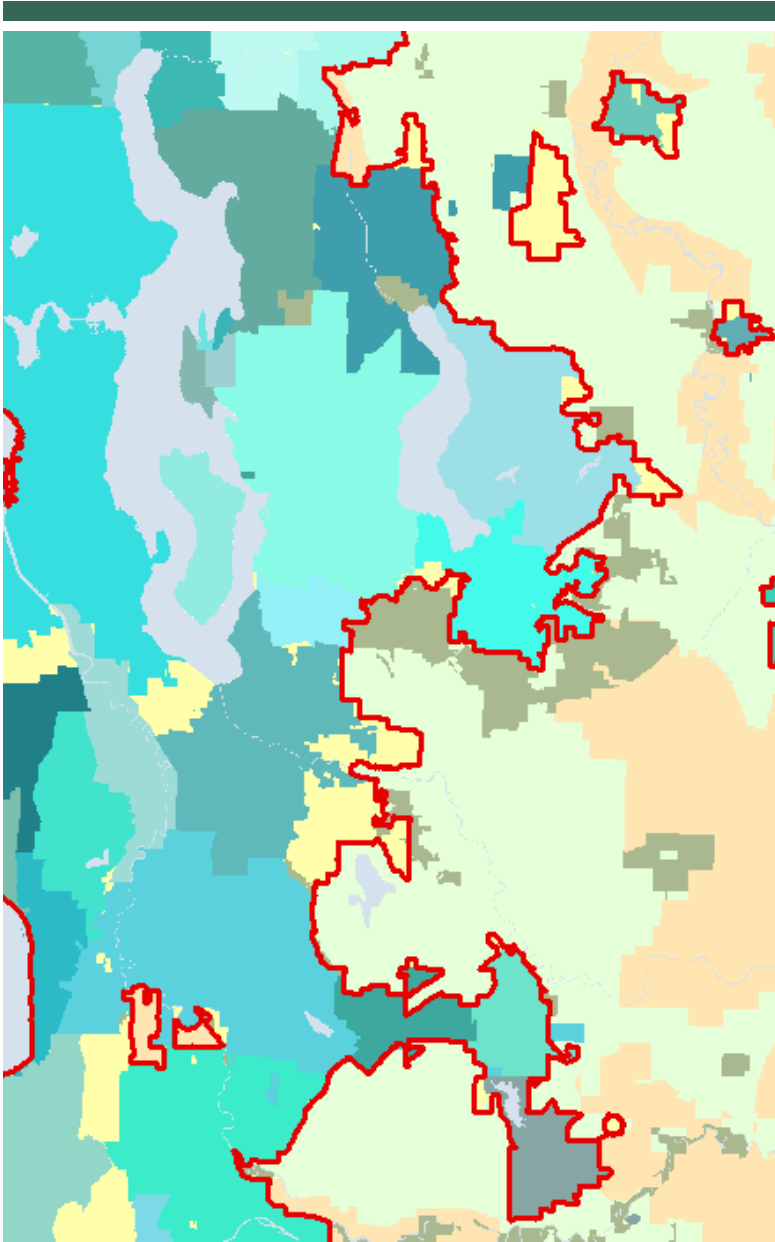




# IMPLEMENTING THE GROWTH MANAGEMENT ACT

# GROWTH MANAGEMENT PLANNING COUNCIL (GMPC)

- Established in 1992 via Interlocal Agreement
- Convened by the King County Executive
- Members representing: King County, City of Seattle, Sound Cities Associations
- Ex-Officio members representing: Special Purpose Districts, School Districts, Port of Seattle
- Oversee the Countywide Planning Policies including: the UGA, Growth Targets, policies for topics of a countywide nature that cross jurisdictional lines
- Make recommendations to the King County Council
- Ratification: after approval and ratification by the King County Council, approval of amendments within 90 days by county & cities representing at least 70% of the population and 30% of those jurisdictions



## Countywide Planning Policies establish:

- Guidance for the comprehensive plans

- Urban growth area boundary

- Criteria for revising growth boundary

- Growth targets for each jurisdiction

- Criteria for defining urban centers and manufacturing/industrial centers

- Policies for issues of a countywide nature

---

# WHY UPDATE COUNTYWIDE PLANNING POLICIES NOW?

- 
- VISION 2050 update + Regional Centers Framework
  - New growth targets for 2024 Comprehensive Plans
  - Policy guidance for 2024 Comprehensive Plans
  - Other policy and legislative changes since 2012
  - Policy recommendations from GMPC's Affordable Housing Committee

# ENVIRONMENT KEY THEMES



- Emphasize climate change by adding a new subsection.
- Update the greenhouse gas reduction goals
- Protect and restore natural resources
- Address environmental justice
- Provide parks, trails, and open space within walking distance of urban residents prioritizing underserved communities.
- Call for the use of best available science when establishing and implementing environmental standards.

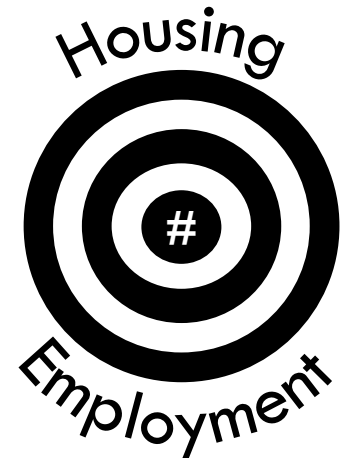
# DEVELOPMENT PATTERNS KEY THEMES



- Establish a Centers Designation Framework consistent with the PSRC regional framework
- Address four-to-one program provisions.
- Ensure better understanding of past housing and land use practices that have led to inequities by race and ethnicity.
- Codify growth target and urban growth capacity report processes.
- Develop new growth targets with a planning horizon to 2044, and link growth targets to land use assumptions in comprehensive plans.
- Strengthen city-county collaboration around annexation area planning. Clarify the process for reassigning potential annexation areas.

## WHAT ARE GROWTH TARGETS?

- Growth targets are:
  - A policy statement about the amount of housing and jobs each jurisdiction will plan for in 2024 comprehensive plans
  - Part of the Countywide Planning Policies
  - For the urban area only
  - For at least a 20-year period (2019-2044)
  - Created collaboratively by all cities and King County



# COUNTYWIDE AND REGIONAL GEOGRAPHY ALLOCATIONS

## King County 2019-2044

Population	660,850
Housing Units	296,800
Jobs	490,850

2019-2044 Growth	Metro	Core	HCT	Cities and Towns	Urban Unincorporated
<i>Population</i>	288,400	261,900	69,650	33,300	3,000
Housing Units	134,500	112,850	29,950	14,000	1,300
Jobs	223,500	222,800	28,750	12,950	700

\*Regional Growth Strategy Rural area growth: 4,200 Housing Units, 2,150 Jobs

# DRAFT GROWTH TARGETS

Metro  
Cities

	Net New Housing Units 2019-2044	Net New Jobs 2019-2044
Bellevue	27,000	54,000
Seattle	112,000	169,500
<b>Regional Geography Total</b>	<b>139,000</b>	<b>223,500</b>

- Key Themes:
  - Job-housing balance
  - VISION 2050 policies
  - Major developments and capacity

# HOUSING KEY THEMES



- Align with existing plans including VISION 2050 and the Regional Affordable Housing Task Force Final Report and Recommendations.
- Redefine Countywide Need as the number of homes needed today and, in the future, to ensure that no low-income household is cost burdened.
- Guide cities and the county through a four-step continuous improvement process to meet the countywide need
- Establish regular monitoring of regional and jurisdictional progress through the Affordable Housing Dashboard and leverage new centralized data infrastructure created by King County staff that support the AHC.

# ECONOMY KEY THEMES



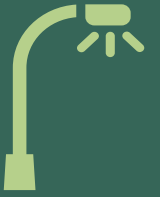
- Support advanced manufacturing throughout the county.
- Prioritize a diversity of middle-wage jobs.
- Foster a supportive environment for locally-, women-, and BIPOC-owned businesses.
- Reduce historic and ongoing disparities in income and employment opportunities for communities that have been economically disadvantaged.
- Encourage public and private sectors to incorporate environmental stewardship and social responsibility.

# TRANSPORTATION KEY THEMES



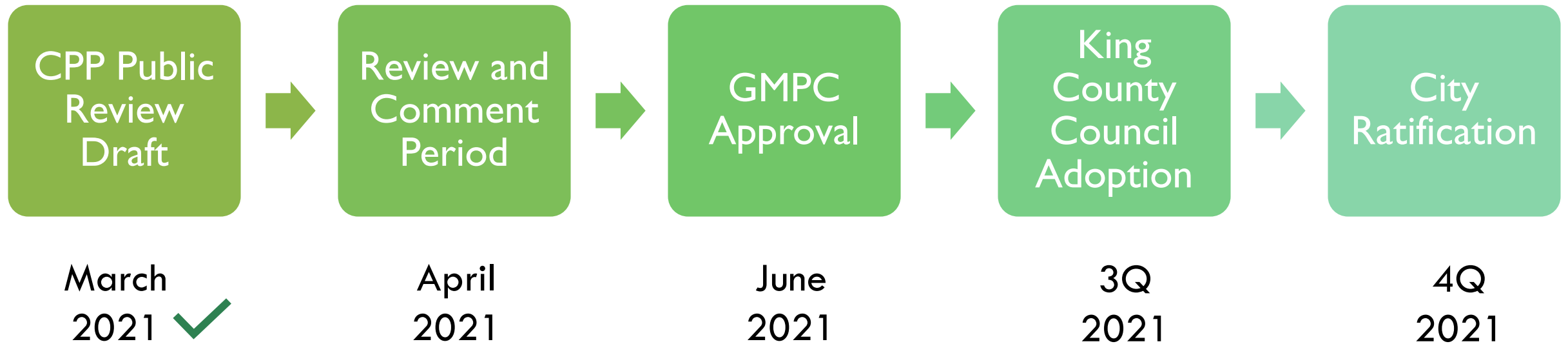
- Emphasize creating an equitable transportation system.
- Improve the safety of the system for all users.
- Encourage alternatives to driving along including transit and active transportation.
- Minimize displacement and impact on affected communities.
- Strengthen connections between land use and transportation.
- Promote a sustainable system by encouraging transit use, active transportation and alternative fuels.

# PUBLIC FACILITIES + SERVICES KEY THEMES



- Address impacts of climate change on fisheries and water reuse and reclamation.
- Make investments in renewable and alternative energy sources.
- Expand internet service to businesses and households of all income levels.
- Prioritize affordable and equitable access to public services.
- Consider climate change, economic and health impacts when siting and building essential public facilities.
- Preparation for natural disasters.

# COUNTYWIDE PLANNING POLICIES MILESTONES AND ADOPTION



## PUBLIC REVIEW AND COMMENT PERIOD

- Ongoing through May 5, 2021
- Draft Countywide Planning Policies, growth targets and the Urban Growth Capacity Report linked on the [CPP website](#)
- Email comments to [GMPC@kingcounty.gov](mailto:GMPC@kingcounty.gov)

---

# FOR MORE INFORMATION

## GMPC WEBSITE

### THE KING COUNTY INTERJURISDICTIONAL TEAM

*FACILITATOR: KAREN WOLF, FAICP: [KAREN.WOLF@KINGCOUNTY.GOV](mailto:KAREN.WOLF@KINGCOUNTY.GOV)*

*GROWTH TARGETS LEAD: REBECCA H MASKIN, AICP: [RMASKIN@KINGCOUNTY.GOV](mailto:RMASKIN@KINGCOUNTY.GOV)*