

2022 Parks & Open Space System Plan Update

Parks and Community Services Board

September 14, 2021

Ryan Walker

Planner, Parks and Community Services



City of Bellevue

Agenda

- **Parks & Open Space System Plan introduction**
- **Data and plan guidance**
- **Public hearing**
- **Discussion**

What is the Parks and Open Space System Plan?

- **Guiding document**
- **~20-year plan**
 - First System Plan issued in 1981, updated about every 6 years
- **Primary tool to convey the community's long-range vision for acquisition, development, and maintenance**
 - Identifies needs of the community
 - Establishes recommendations and capital project objectives to be furthered through CIP process

Why is the plan created?

Assess and evaluate parks and open space facilities to meet the needs of residents

- Provide a guide for the future
- Establish capital improvements priorities

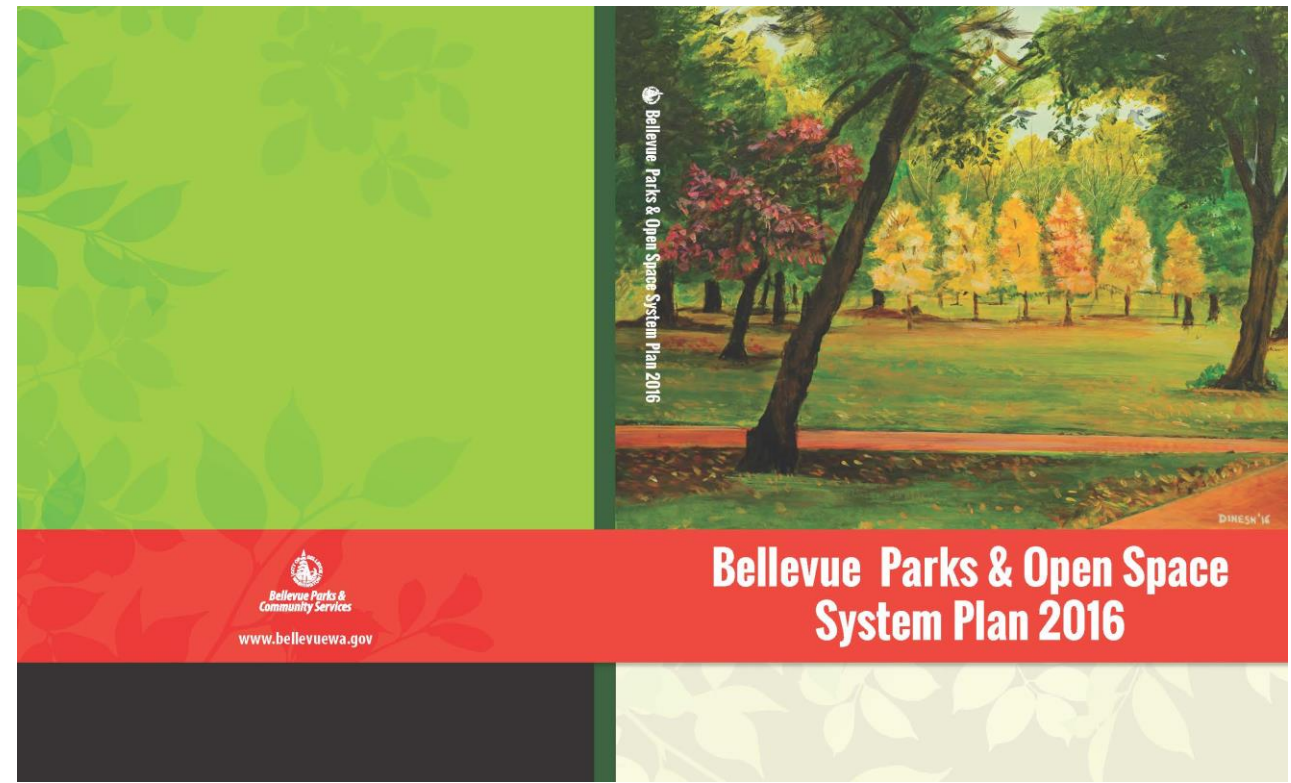
Planning and accreditation requirements

- National Recreation and Parks Association (NRPA) accreditation
- WA Recreation and Conservation Office grants (RCO)

2022 Parks and Open Space System Plan Update

Will build on...

- 2020 Strategic Plan vision and goals
- 2016 System Plan objectives
- Additional existing city policy
- Public outreach



System Plan Focus Areas

- Open Space, Greenways, Wildlife Corridors, & Trails
 - Park Facilities
 - Active Recreation Facilities
 - Urban Park Systems
 - Waterfront Access
 - Partnership Opportunities
 - Historic, Cultural, & Art Resources
-
- **Capital project objectives – what is of interest to acquire, develop, and/or enhance/preserve within each focus area**

2016 Capital Project Objectives (selection)

- Expand multi-use trails and greenway trail systems, including wayfinding
- Add neighborhood parks in underserved areas
- Develop existing undeveloped park properties & continue phased development of others
- Expand community center locations
- Develop and enhance various sportsfields
- Expand off-leash dog areas
- Focus on urban parks expansion and enhancement
- Acquire and/or develop identified waterfront access locations
- Look for partnerships to create parks and expand facilities



Public Outreach and Engagement

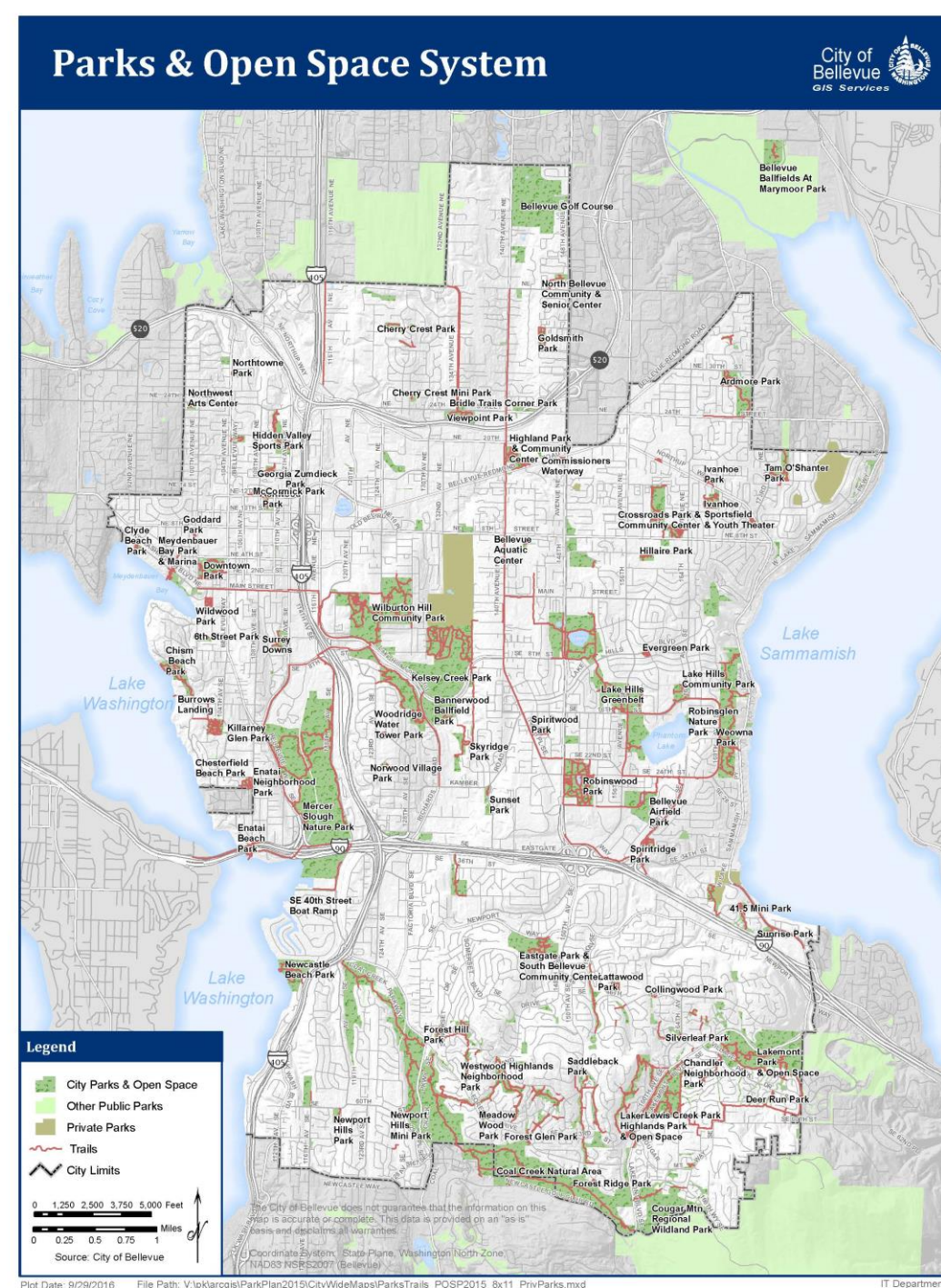
- Plan information www.Bellevuewa.gov/park-plan.htm
- **Questionnaire** – coming soon
- **Public meetings, including presentations to boards and commissions**
 - Parks and Community Services Board public hearing – September 14th, 6:00 PM
 - Neighborhood Leadership Gathering – October 7th, 6:30 PM
- **Presentations to community and stakeholder groups**
- **Email distribution, newsletters, social media, flyers**

Project Timeline

Task	Timeline
Inventory and mapping	Ongoing; fall 2021
Public engagement	Ongoing; fall 2021
Draft plan & Parks Board endorsement	Late fall 2021/early winter 2022
Council adoption	Winter/early spring 2022

Parks and Open Space System

- 2,710 acres across 78 parks, community centers/rec facilities, and additional undeveloped open space
 - 15 acres added since 2016 plan along with development and renovation of existing parks
- 1.5 miles of publicly accessible waterfront
- 98 miles of trails
- Schools provide additional programmed facilities and trails

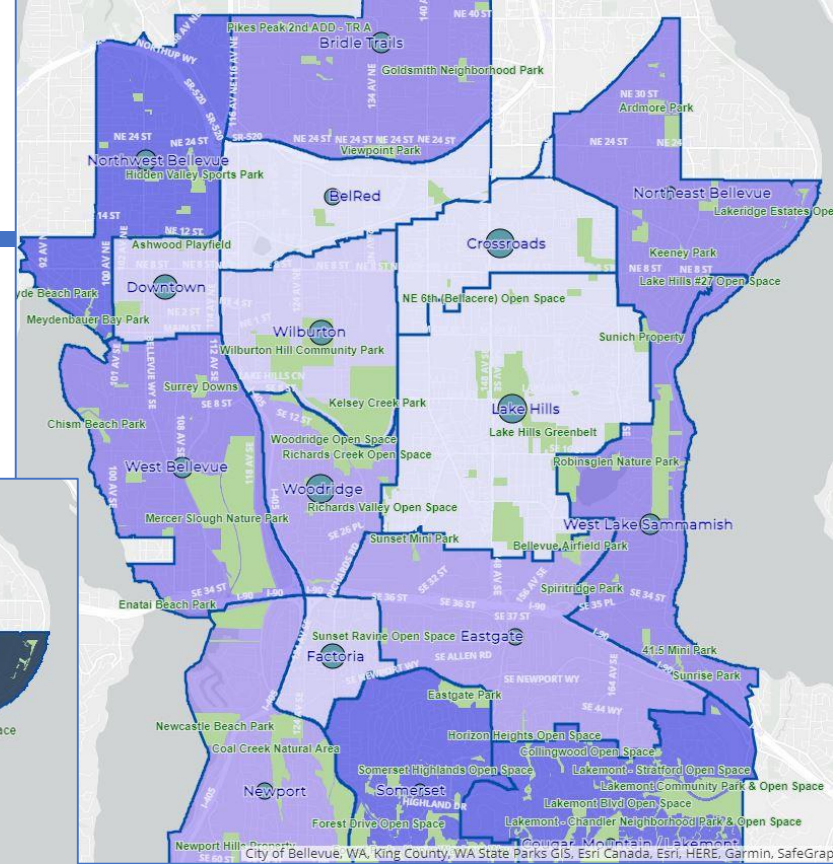
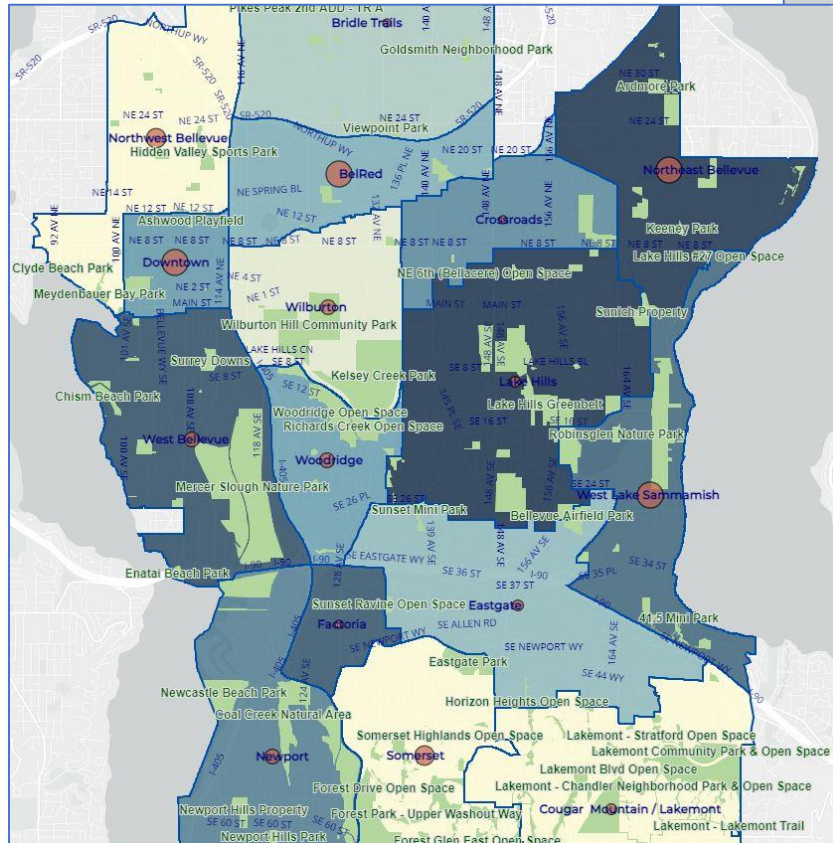


Since the 2016 Plan...

- Downtown Park improvements – NE gateway, circle completion, playground expansion
- Aquatic center feasibility study
- Meydenbauer Bay design and development
- Surrey Downs Park development
- Bridle Trails 140th St. Park planning
- Acquisitions of park property - Lake Sammamish neighborhood park, Mercer Slough addition, and Newport Hills neighborhood park addition
- Sports field resurfacing
- Renovation program – numerous parks throughout the city (typically ~ 50+ projects completed/year)
- Expansion of the Eastrail

Demographics

- City and region growing fast
- Median age is currently decreasing as the younger workforce increases. About 14% of the population is over 65 and about 20% is youth.
- However, Bellevue has a larger percentage of adults over 65 than some surrounding cities. Over time older adult population is likely to increase following national trends.
- Bellevue is culturally diverse. Over 50% of the population is people of color.
- Wide income distribution, with about 8% of residents in poverty

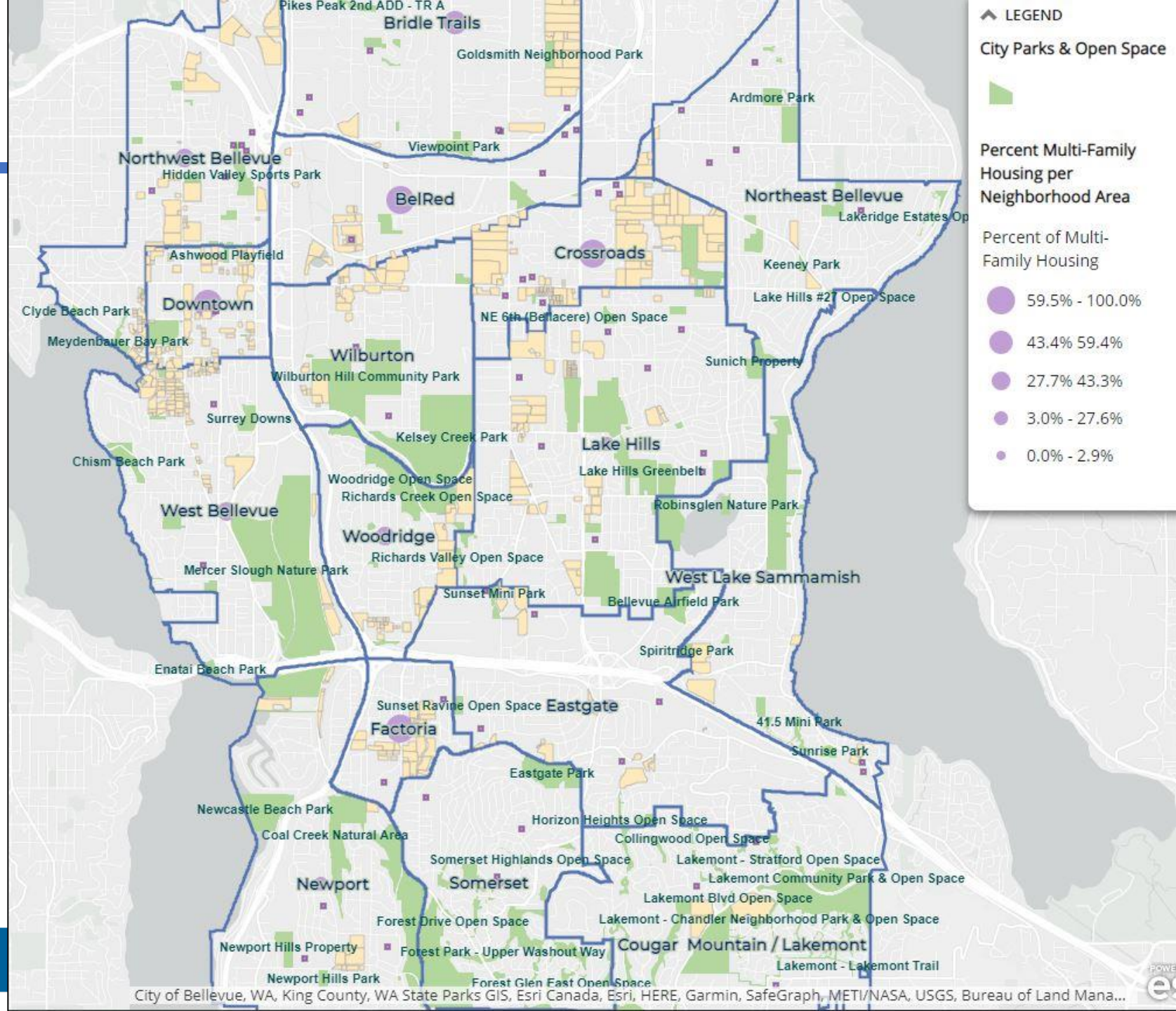


Household Income

Age and disability

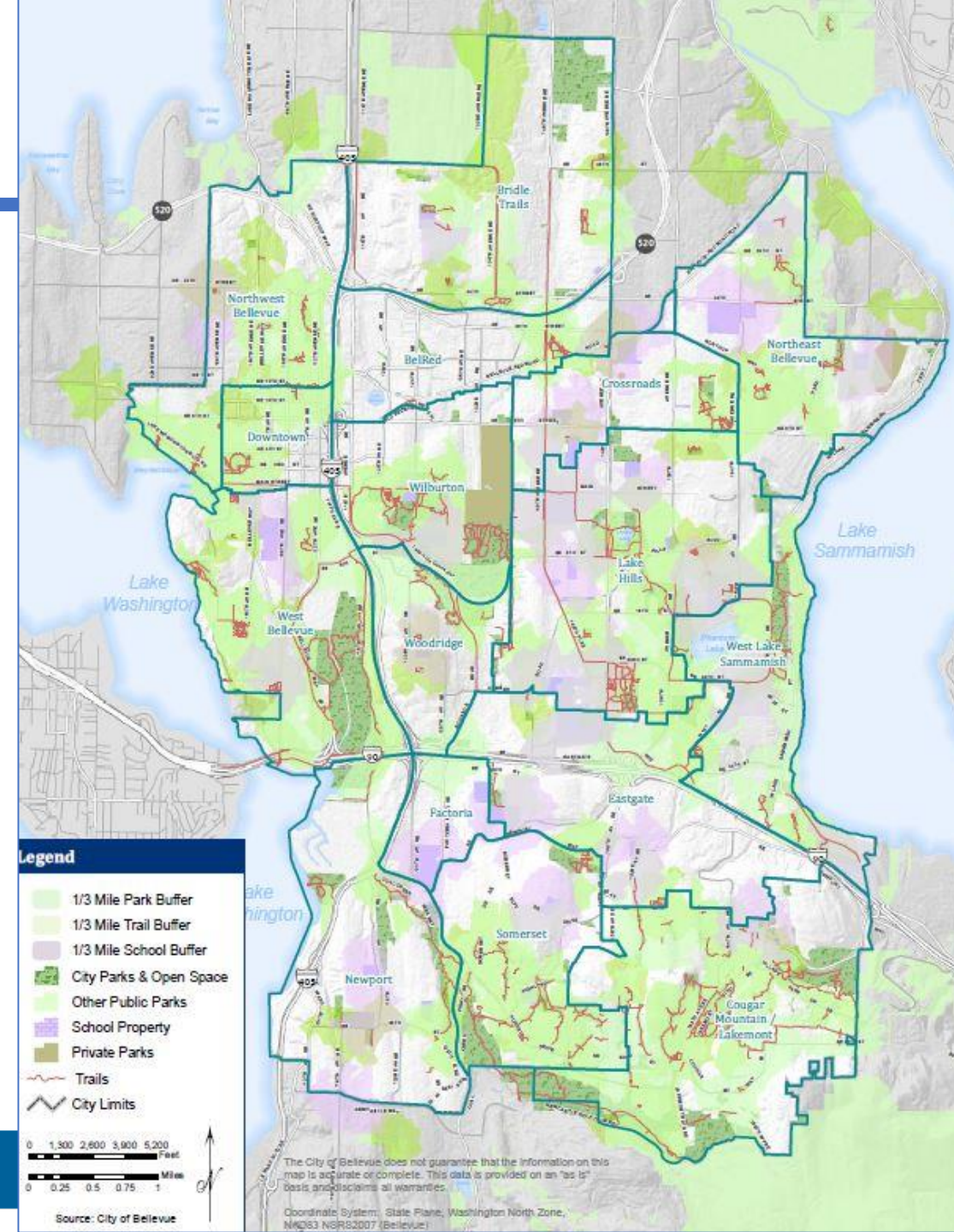
Housing

- About 53% of households own their home
- Of housing units, over half are multi-family
- Density is increasing with infill development in many neighborhoods



Walkable access (level-of-service)

- Goal: Ensure that 100% of Bellevue residents are within 1/3 mile of a park, open space, or trail by 2050
 - Currently, about 73.5% of residents that meet this criteria



Related Plans and Initiatives

- Parks and Community Services Strategic Plan (2020)
- Recreation Program Plan (2020)
- Bellevue Comprehensive Plan (2015)
- Environmental Stewardship Plan (2020)
- Bellevue Diversity Advantage Initiative
- Human Services Needs Update (2019-20)
- Downtown Livability Initiative (2017)
- Pedestrian and Bicycle Implementation Plan (2009)
- Bellevue Watershed Management Plan (ongoing)
- Parks Forest Health Assessment (ongoing)
- Wilburton Citizen Advisory Committee Vision Report
- Eastrail implementation (ongoing)

Related Plans and Initiatives

- Comprehensive Plan
 - Parks and Open Space System Plan builds on Comprehensive Plan policies.
 - In order to meet parks and open space goals:
 - Preserve the city's natural character and systems`
 - Obtain land necessary to provide a range of recreation opportunities
 - Provide access for all of Bellevue's residents
 - Establish a coordinated and connected system of trails and open spaces
 - Offer a variety of services and programming for all ages
 - Use open space as visual relief to separate and buffer between uses
 - Collaborate with other agencies to meet community needs



Related Plans and Initiatives

- Environmental Stewardship Plan
 - Increase tree canopy citywide,
 - Support preservation and access to green and open spaces
 - Identify and acquire sites where preservation as open space could incorporate additional environmental benefits
 - Consider strengthened code requirements, land use incentives, or fees on new development to expand the park system
 - Continue to plan for achieving walkable access to parks, open space and trailheads



Parks & Community Services Strategic Plan

- **Vision**

In Bellevue everyone can connect to each other and to nature through experiences that help them to live, grow, and thrive.

- **Mission**

We build a healthy community through an integrated system of exceptional parks, natural areas, recreation, arts and culture, and a broad base of community services.

- **Equity**

Equity acknowledges and removes disparities in opportunities, power, and resources so that everyone can reach their full potential to thrive. Bellevue Parks & Community Services practices equity, which is the responsibility of every individual in the department. Equitable access is a right, not a privilege, and is fundamental to our mission of serving all people. Through equitable policies and practices, we cultivate ties that connect people to the fabric of our community.



Public Hearing



Discussion

We want to capture at a system-level what is working and where the opportunities lie.

In your experience, what is working well in Bellevue's park and open space system? This could be related to access, facilities, types of communication, etc.

Alternatively, what system elements might be considered for improvement or attention?

How can we better serve all populations?

October Meeting

- **Public outreach results so far**
- **Review of challenges and opportunities**
- **Additional policy discussion**
- **Capital Project Objectives review and discussion**