

Lake Washington Lake Lines Management Plan

Environmental Services Commission Update Briefing

Angela Chung, Senior Engineer/ Planner
Brian Landau, Utility Systems Planning Manager
Linda De Boldt, Engineering Assistant Director

ESC Presentation: October 7th, 2021

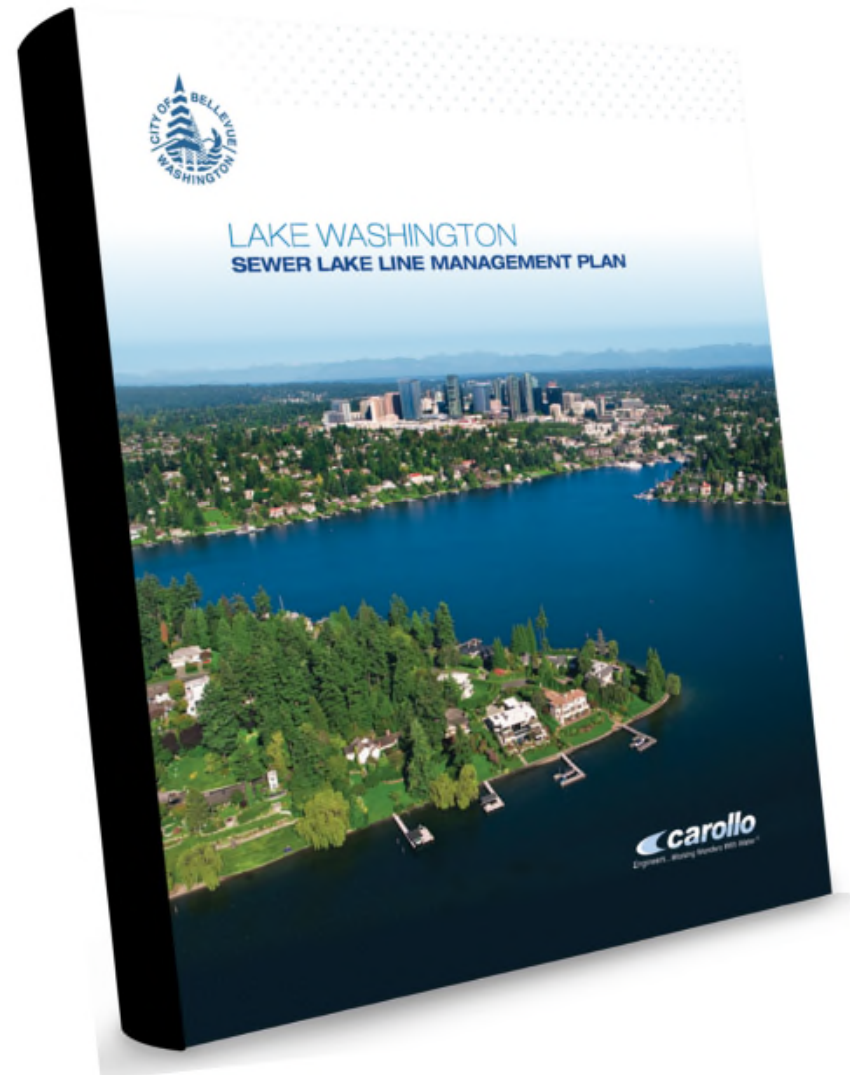


City of Bellevue

Informational Update Briefing

Lake Washington Lake Lines Management Plan

Understand, identify, and prioritize the Lake Washington Lake Lines and key operational and capital investment strategies to phase future repair, replacement and operations of the Lake Lines in a Sewer Lake Line Management Plan.

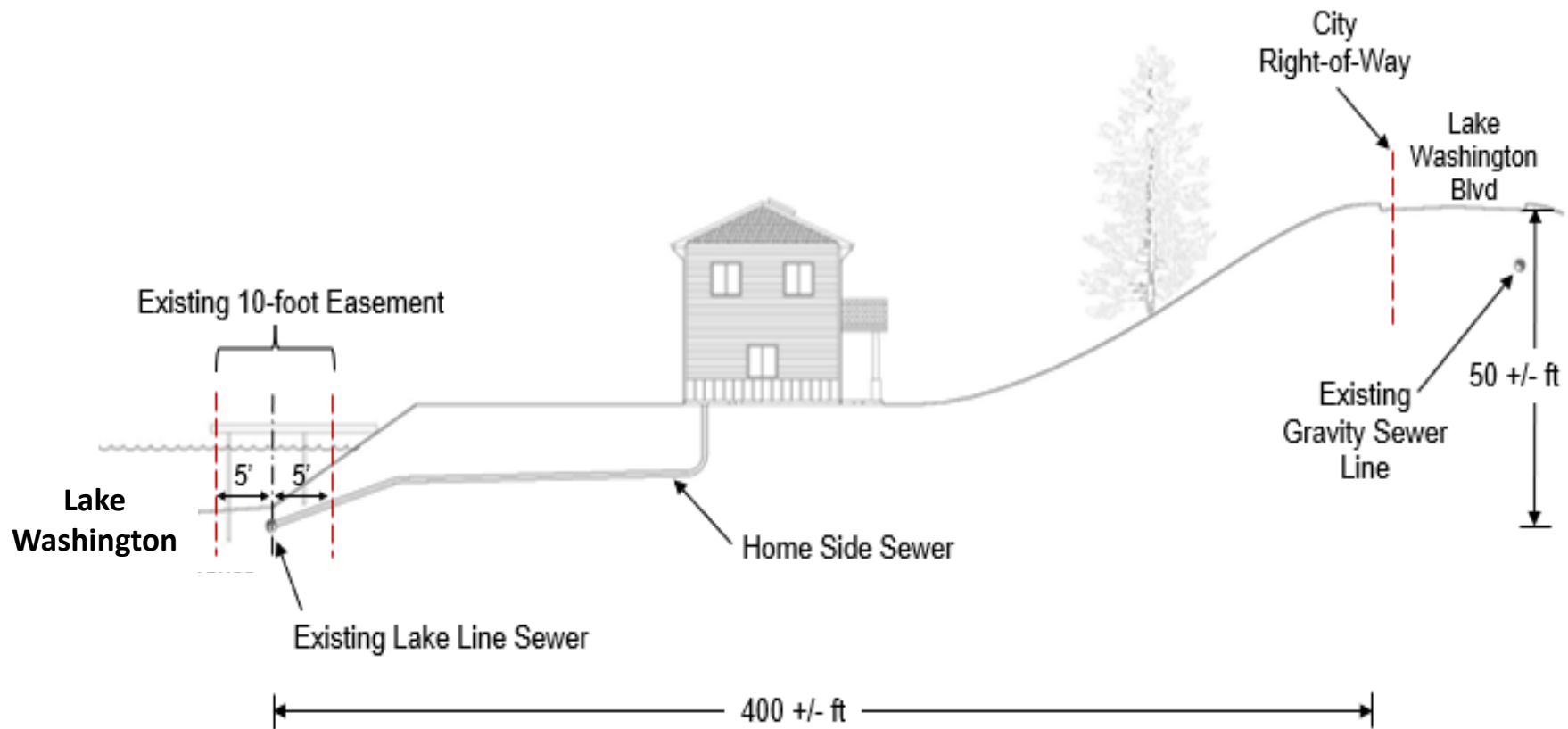


Agenda

- Refresher on Background
- Current Project Progress
- Program-wide SEPA/EIS:
 - SEPA Process
 - Program-Wide EIS
- Public Engagement
- Q&A/Discussion



WHAT IS A LAKE LINE?



Lake Washington Lake Lines in City of Bellevue Service Area

| Jurisdiction | Approx. Length (Miles) | % of total Lk Wa Lake Lines |
|--------------|------------------------|-----------------------------|
| Yarrow Point | 1.5 | 10% |
| Hunts Point | 2.0 | 14% |
| Medina | 4.5 | 31% |
| Bellevue | 5.7 | 39% |
| Beaux Arts | 0.3 | 2% |
| King County | 0.6 | 4% |
| TOTAL | 14.6 | 100% |



Why are we creating a Lake Washington Lake Lines Management Plan?

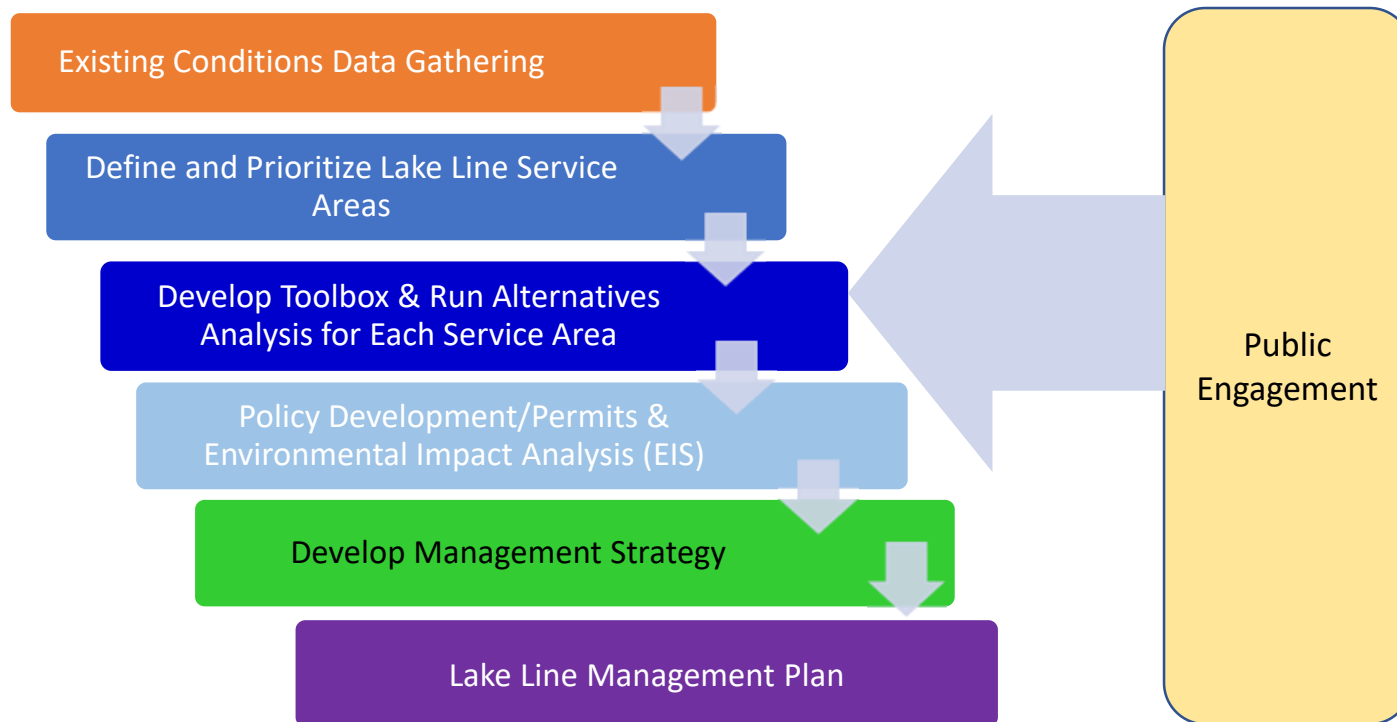
The management plan will be a long term strategic plan to reduce risk while maximizing remaining useful life on the facilities.

The strategic plan will reduce:

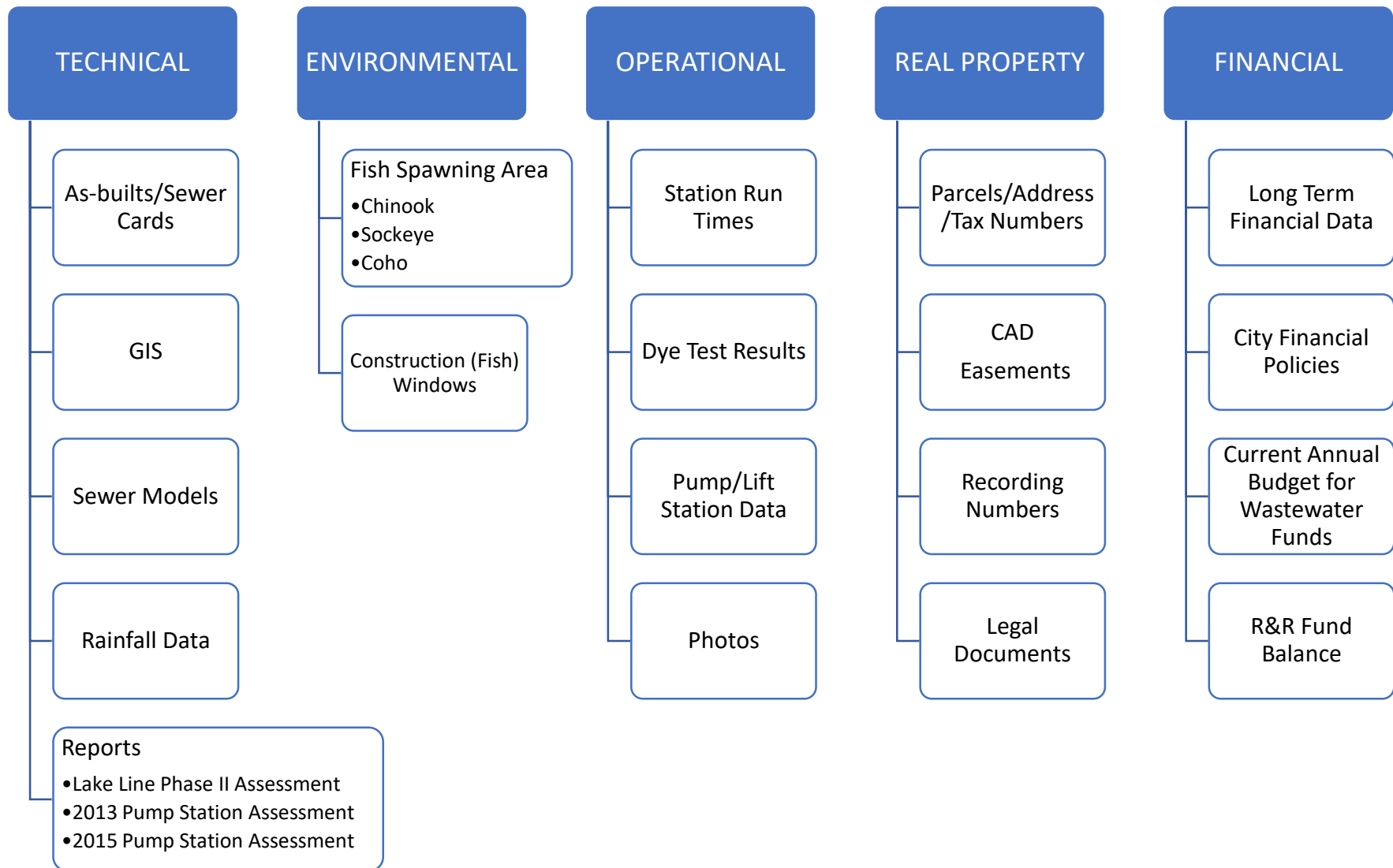
- Operational Risk
- Environmental Risk
- Service Level Risks
- Financial Risk



Project Framework



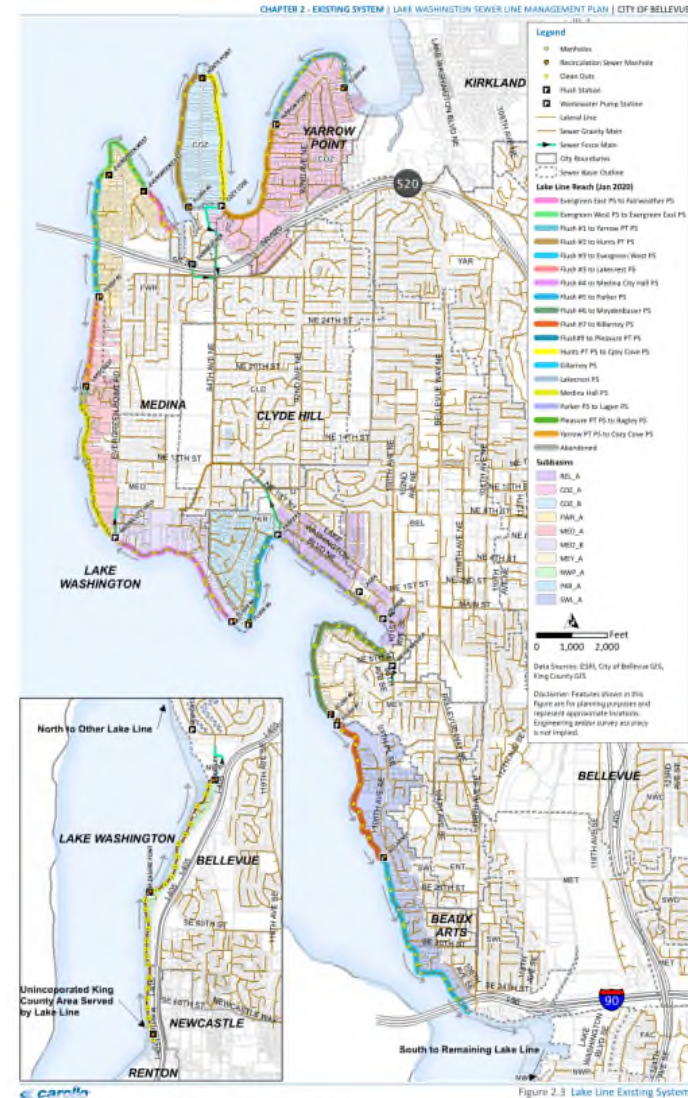
Existing Conditions Data



Define and Prioritize Service Areas

Recommend Defining Service Area by Reach

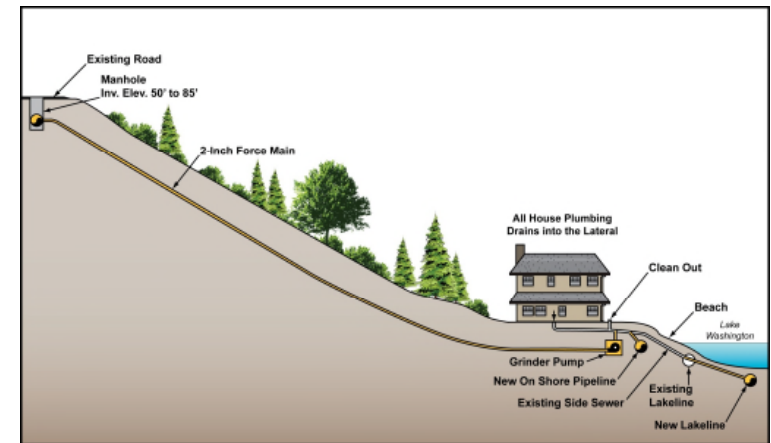
- Reaches are generally consistent with pump station-to-pump station definition of previous planning & reports
- Manageable evaluation size
 - 17 reaches
 - Range of ~1,500 LF to 6,000 LF pipe
 - Similar characteristics in reach/service area
- Captures multiple components of system (pipes & pump/flush stations) for analysis as an overall system.



Lake Line Options



Gravity Sewer Line via Open Cut Construction

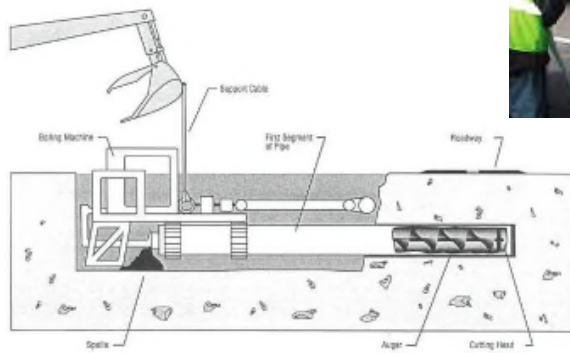


Grinder Pumps

UPLAND



IN LAKE



Gravity Sewer Line via Trenchless Technology



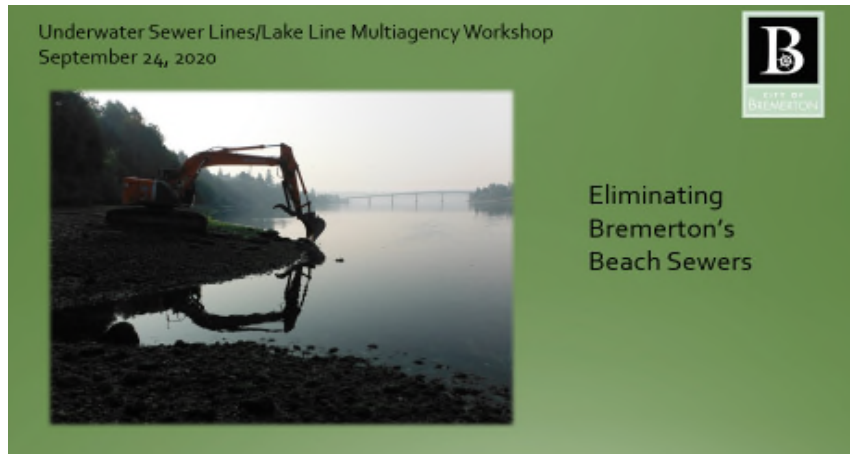
Cured-in-Place Pipe (CIPP)



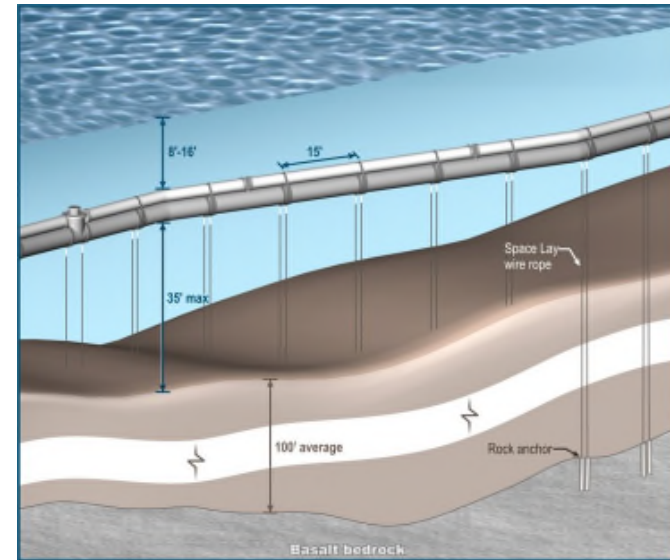
Gravity Sewer Line via Open Cut Construction

ON SHORE

Underwater Sewer Multi-agency Workshop



Bremerton's Grinder Pump



LOIS: Lake Oswego's interceptor Sewer- Buoyant Gravity Sewer.

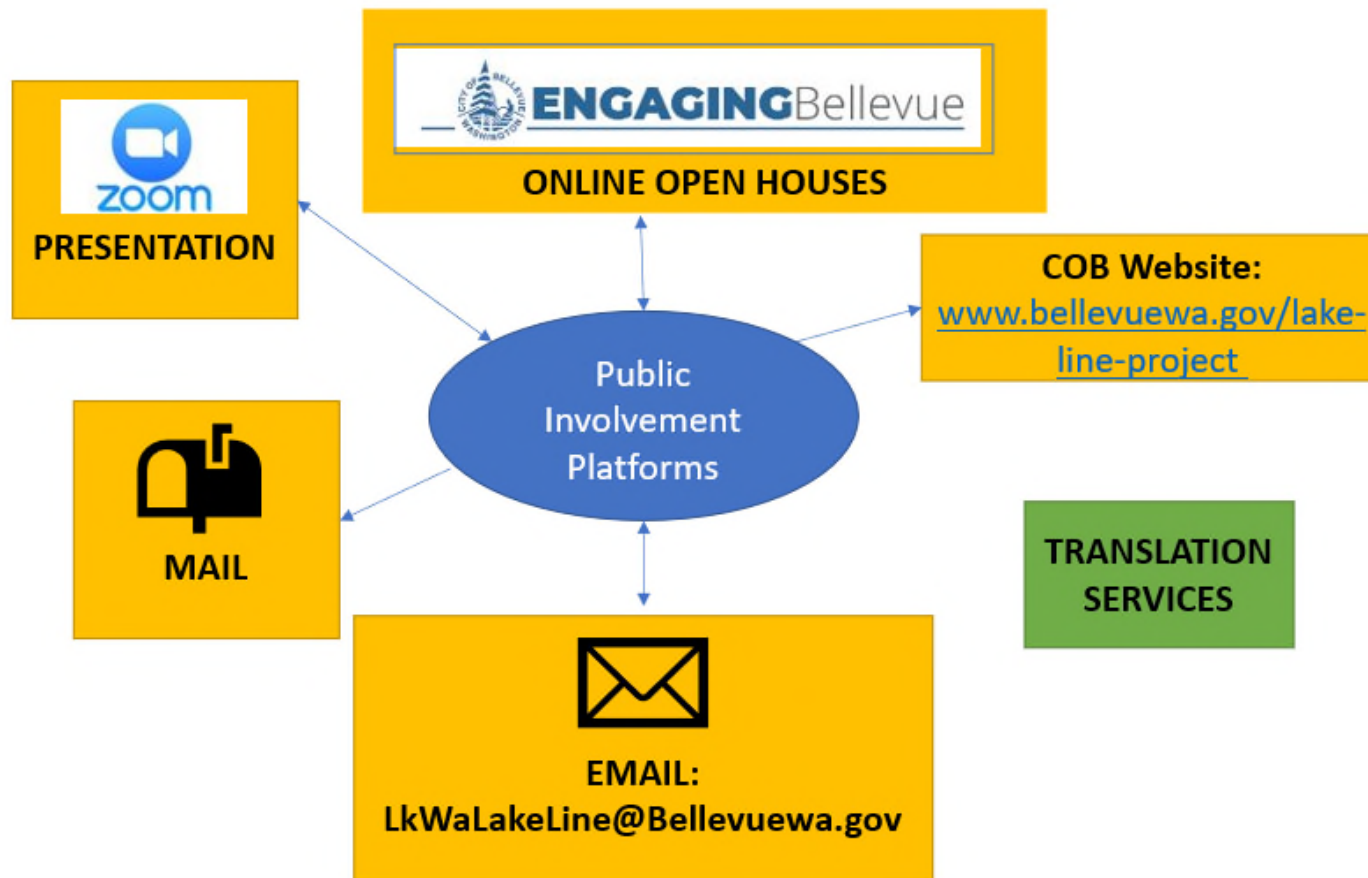


King County's Underwater Manhole in Kenmore.



City of Bellevue

Public Engagement Plan – Engagement Platforms



State Environmental Policy Act (SEPA) & Environmental Impact Statement (EIS)

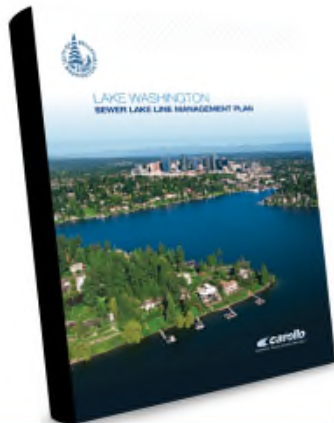


State Environmental Policy Act (SEPA)

Formal Process to
Identify Environmental Impacts

Non-Project/Decisions

(Govt Planning, Critical Area
Ordinances, Water Quality Regs)



Projects

(Private and public projects)



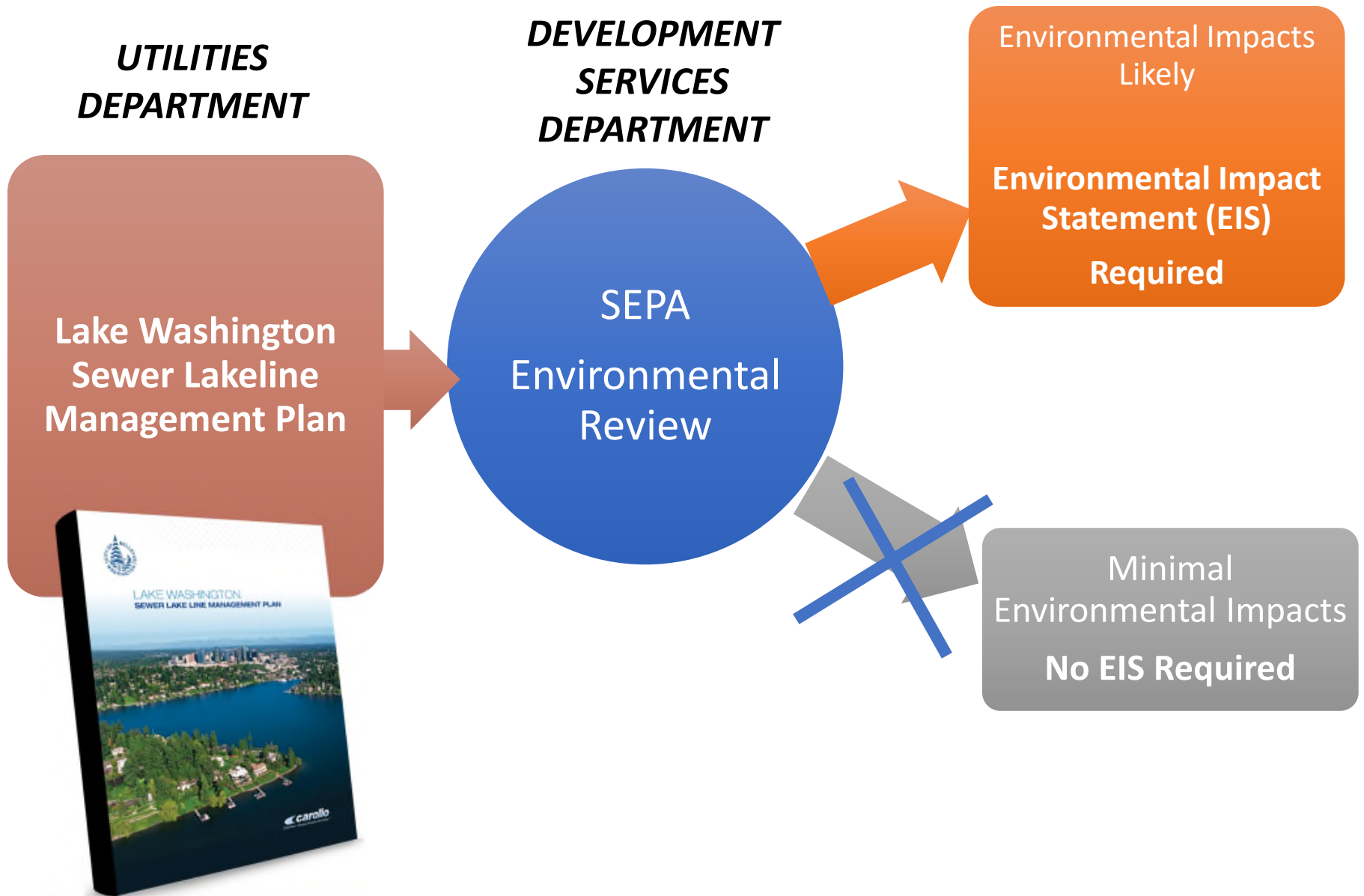
State Environmental Policy Act (SEPA)

SEPA directs state and local agencies:



- Consider impacts, alternatives, and mitigation before committing to a course of action
- Encourage public involvement in decisions
- Prepare environmental studies & documents
- Integrate SEPA early in process

SEPA Requirements Process



Purpose of a Program-Wide Environmental Impact Statement (EIS)

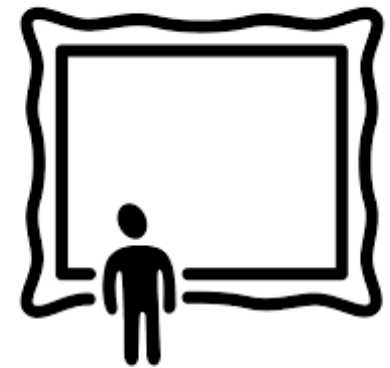
- Meets SEPA requirements
- Comprehensive Analysis
- Public engagement
- Documents comments and feedback



How does a program-wide EIS benefit the project?

Lakeline Management Plan Development

- ❖ Early evaluation of potential environmental impacts
- ❖ “Big Picture” feedback
- ❖ Cost-effective tool

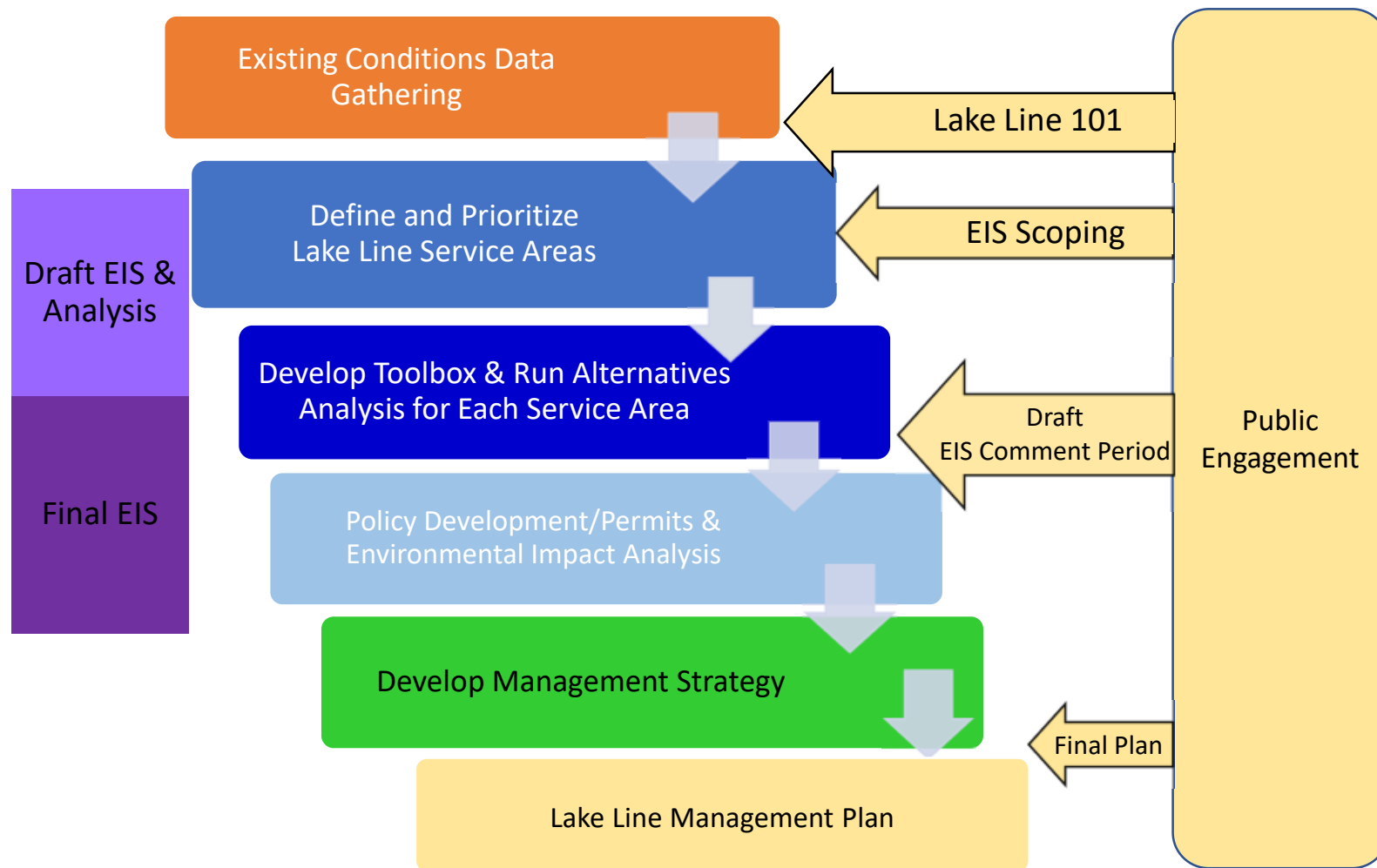


Lakeline Management Plan Implementation

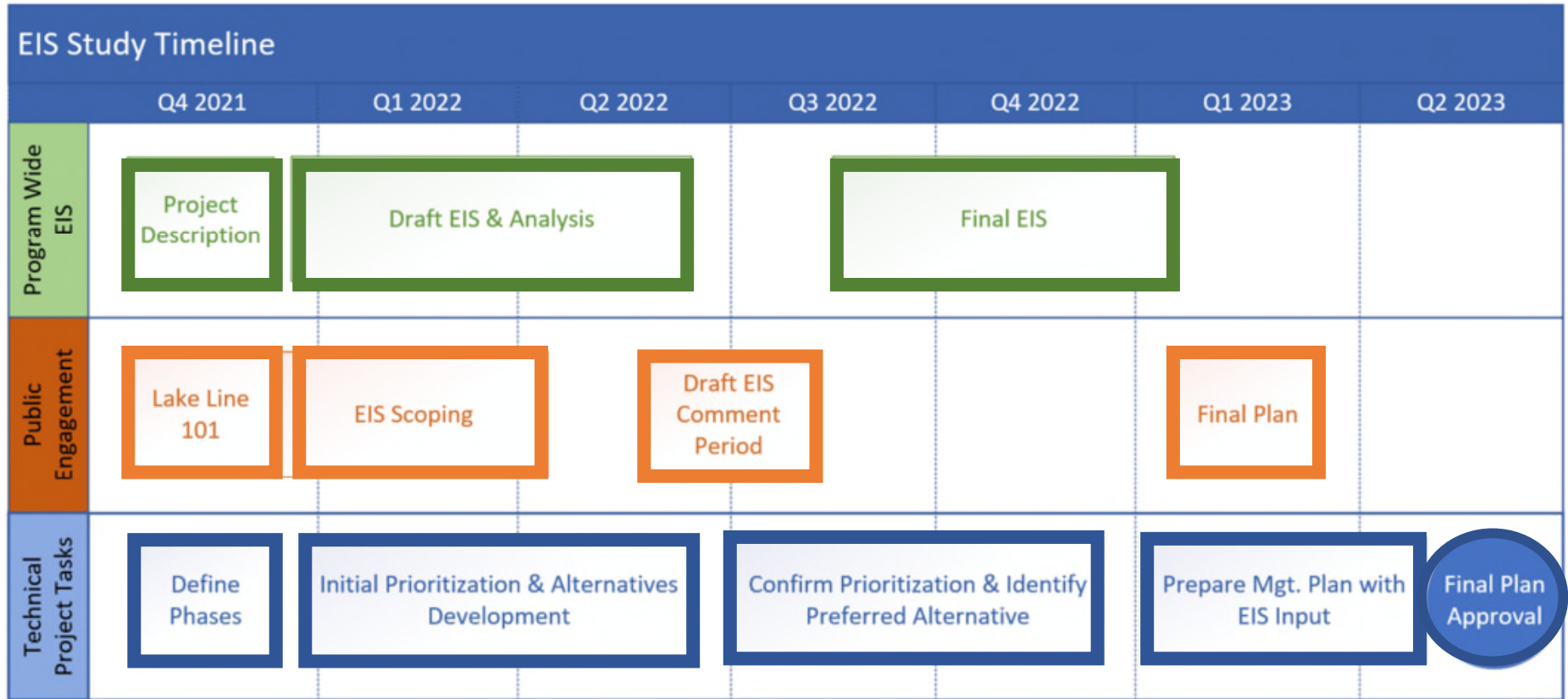
- ❖ Helps to avoid future SEPA challenges
- ❖ Future project efficiencies



Project Framework for Integrated Program-Wide EIS



Project Schedule W/Program-Wide EIS



Next Steps

- Complete consultant contract development.
- Implement integrated public engagement process.
- Continued technical alternatives development.



Questions?



City of Bellevue

The End