

2022 Parks & Open Space System Plan Update

EAST BELLEVUE COMMUNITY COUNCIL

November 2, 2021



Bellevue Parks &
Community Services

RYAN WALKER
Planner



City of Bellevue

Department Mission

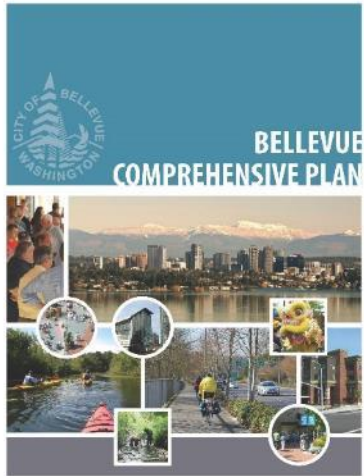


Bellevue Parks &
Community Services

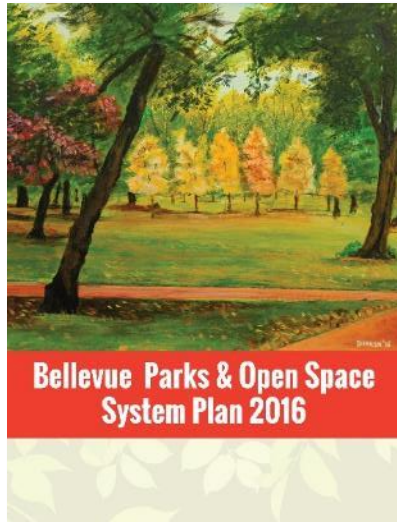


We **build a healthy community** through an integrated system of exceptional parks, natural areas, recreation, arts and culture, and a broad base of community services.

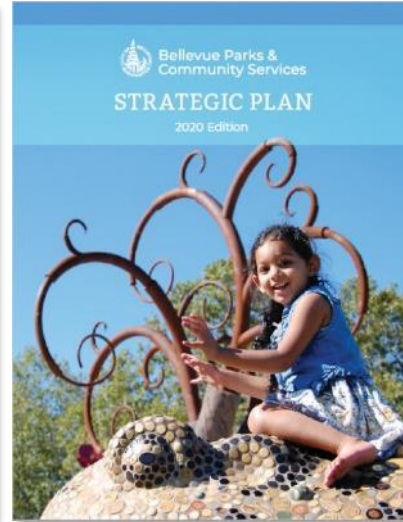
Guiding Principles



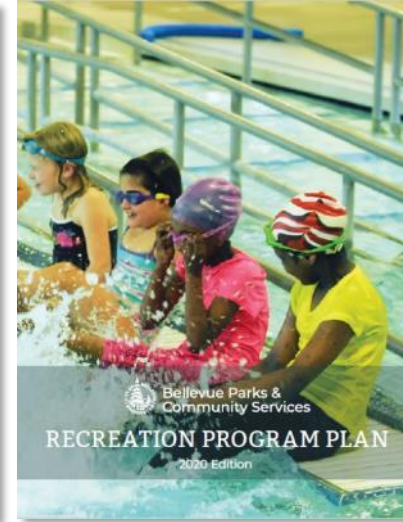
**City of
Bellevue
Comprehensive
Plan**



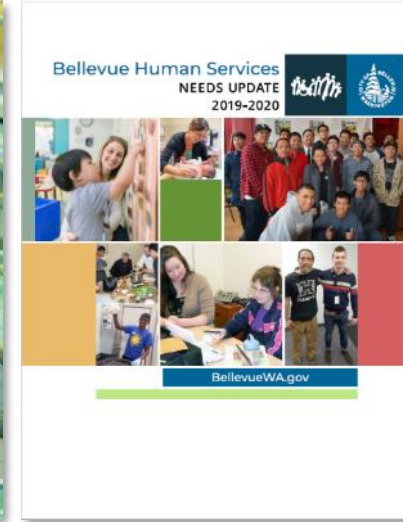
Parks & Open
Space System
Plan



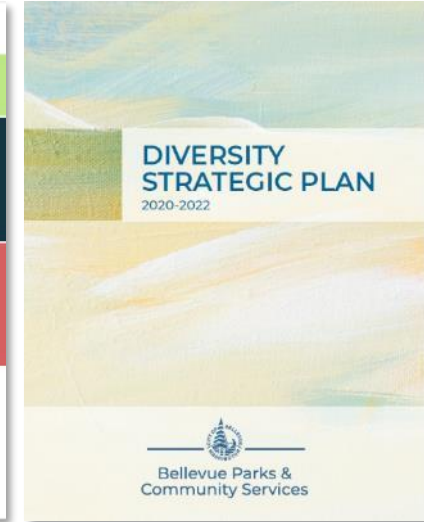
Department
Strategic
Plan



Recreation
Program
Plan



Human
Services
Needs Update



Department
Diversity
Strategic Plan



What is the Parks and Open Space System Plan?

- ~20-year plan, updated every 6 years
- Long-range guidance for acquisition, development, and enhancement
- Holds the big ideas
- Required for accreditation and some grants

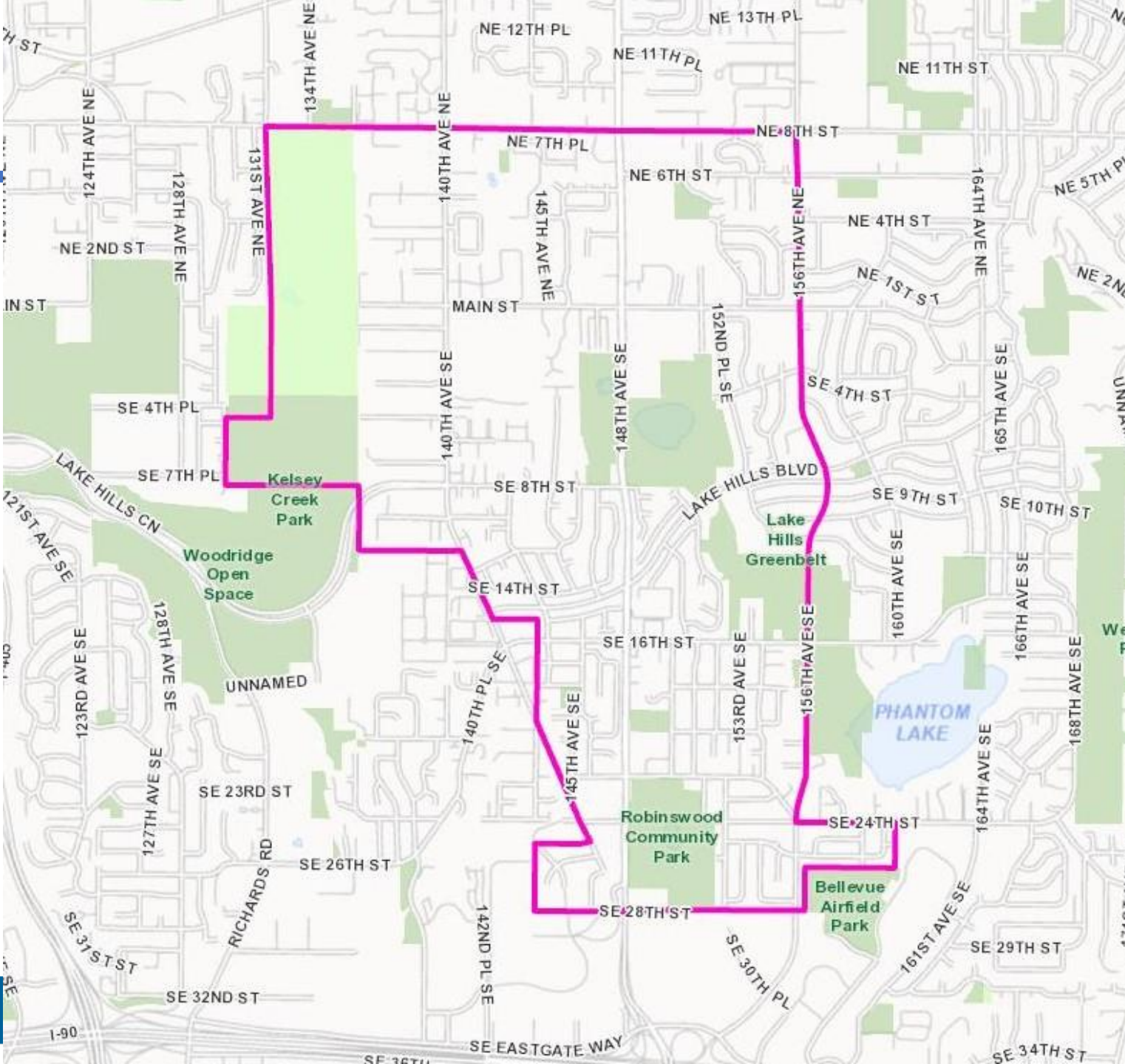


Focus Areas

- **Open Space, Greenways, Wildlife Corridors, & Trails**
- **Park Facilities**
- **Active Recreation Facilities**
- **Urban Park Systems**
- **Waterfront Access**
- **Partnership Opportunities**
- **Historic, Cultural, & Art Resources**

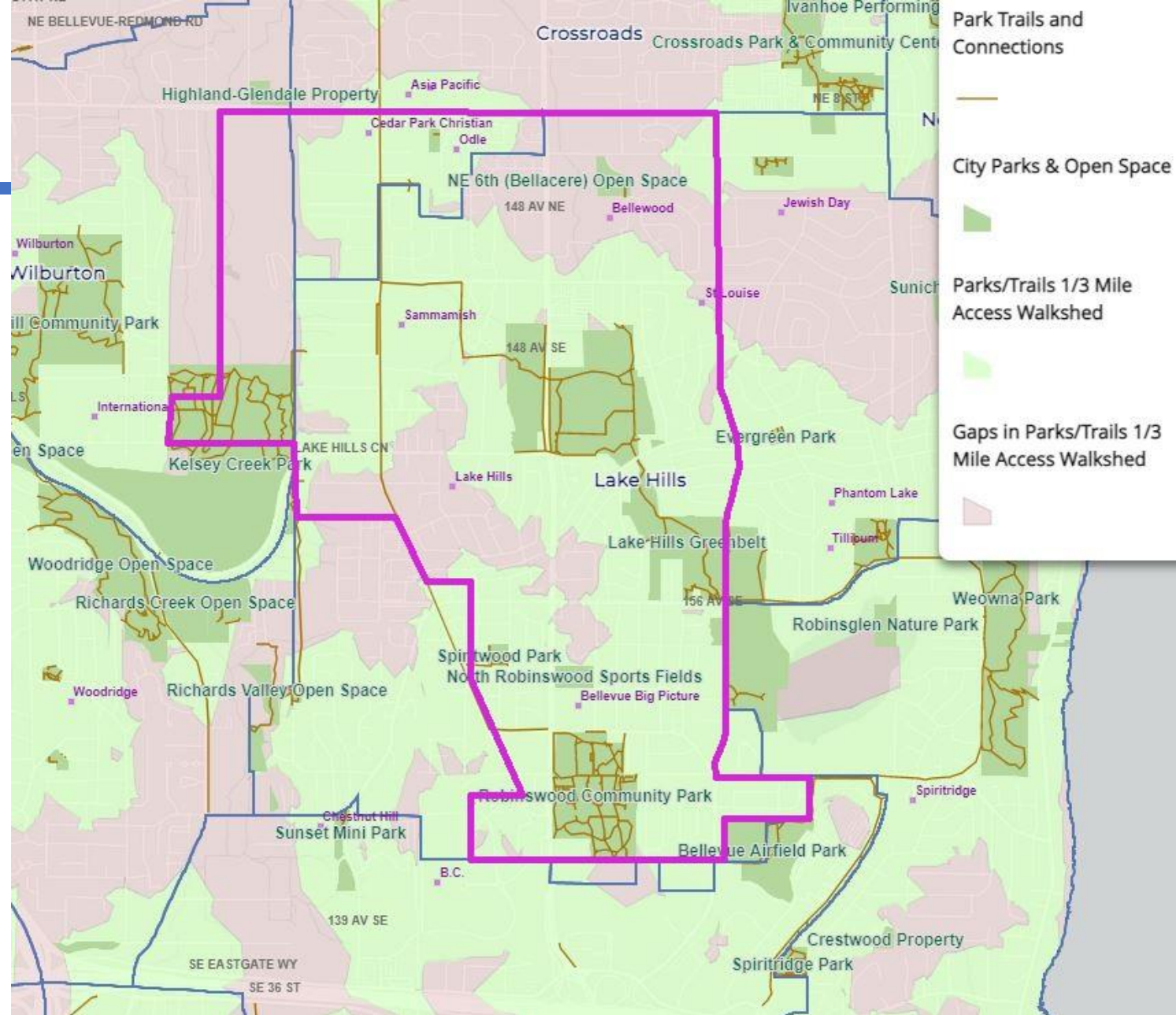


System Map



Key Elements

- **Community profile**
- **System inventory**
- **Policy framework**
- **Level of service analysis**
- **Capital project objectives**
- **Funding and maintenance strategy**
- **Public involvement**



Public Involvement

Please complete the parks survey!

EngagingBellevue.com



City of Bellevue

Home » Input for Parks and Open Spaces!

Input for Parks and Open Spaces!



Do you want to help shape the future of Bellevue's parks and open space? Bellevue Parks and Community Services is updating the long-range Parks and Open Space System Plan and we want to hear from you.

Many of the Bellevue parks and trails we use and treasure today started as ideas in the parks plan! The parks plan provides guidance on all aspects of the parks, trails, and open space system throughout Bellevue, including areas for recreation and play, undeveloped spaces for exploring the natural world, trails that connect communities, and more. The parks plan provides direction specifically on the acquisition, development, and management of parks and open space:

- What do you like about the parks system and what might you like to see more of?
- How can we provide safer and expanded access to parks and trails?
- What can be done to ensure that we are reaching all populations in Bellevue?

Please take 5 minutes and share your input for the Parks and Open Space System plan! The survey will be available through November 8th. It is available in Chinese (simplified and traditional), English, Korean, Russian, Spanish, and Vietnamese.



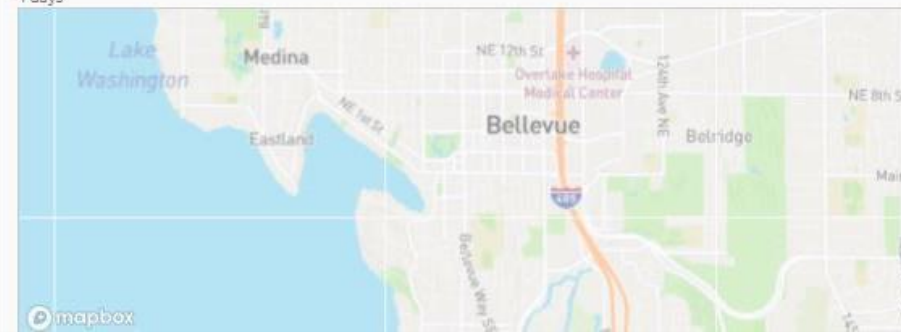
[PARKS AND OPEN SPACE SYSTEM SURVEY](#)

MAP

IDEAS

Map Your Idea!

4 days



Key Dates

Neighborhood Leadership Gathering: Parks and Open Spaces
October 07 2021

Who's Listening

Ryan Walker

Planner
Parks and Community Services

Phone 425-452-4280

Email rwalker@bellevuewa.gov



Documents

- ☐ 2016 Parks and Open Space System Plan
- ☐ Parks and Open Space System Map
- ☐ Park Plan Capital Projects Map 2016
- ☐ Park Plan 1/3 Mile Access Map 2016

Important Links

[Parks and Open Spaces System Plan Website](#)

Lifecycle

- ☒ **Spring 2021**
Project initiated and scoping completed
- ☒ **Summer 2021**
Initial meetings with Parks & Community Services Board; parks and open space inventory
- ☐ **Fall 2021**

Core Public Questions

What do you like about the parks system and what might you like to see added or improved?

How can access to parks and open space be expanded and made safer?

How could we make parks more welcoming for people of all ages, abilities, and backgrounds?



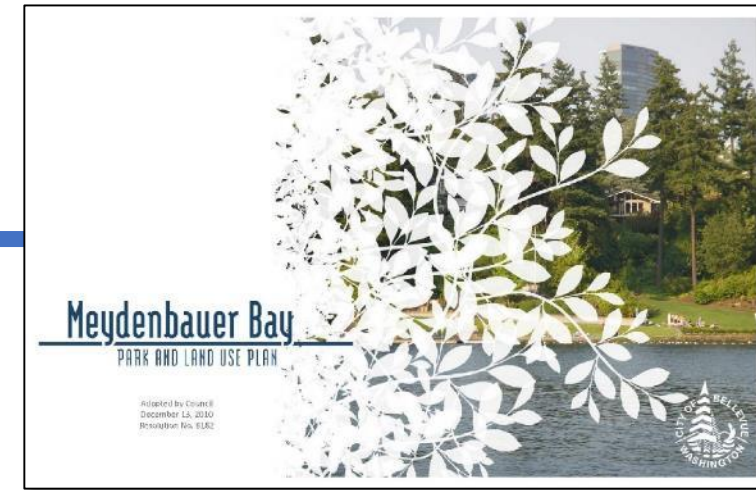
Project Timeline



Recent Projects



**Downtown Park improvements:
Northeast gateway, circle completion,
Inspiration Playground expansion**



**Meydenbauer Bay Park Phase 1
construction and Phase 2 Plan**



Recent Projects

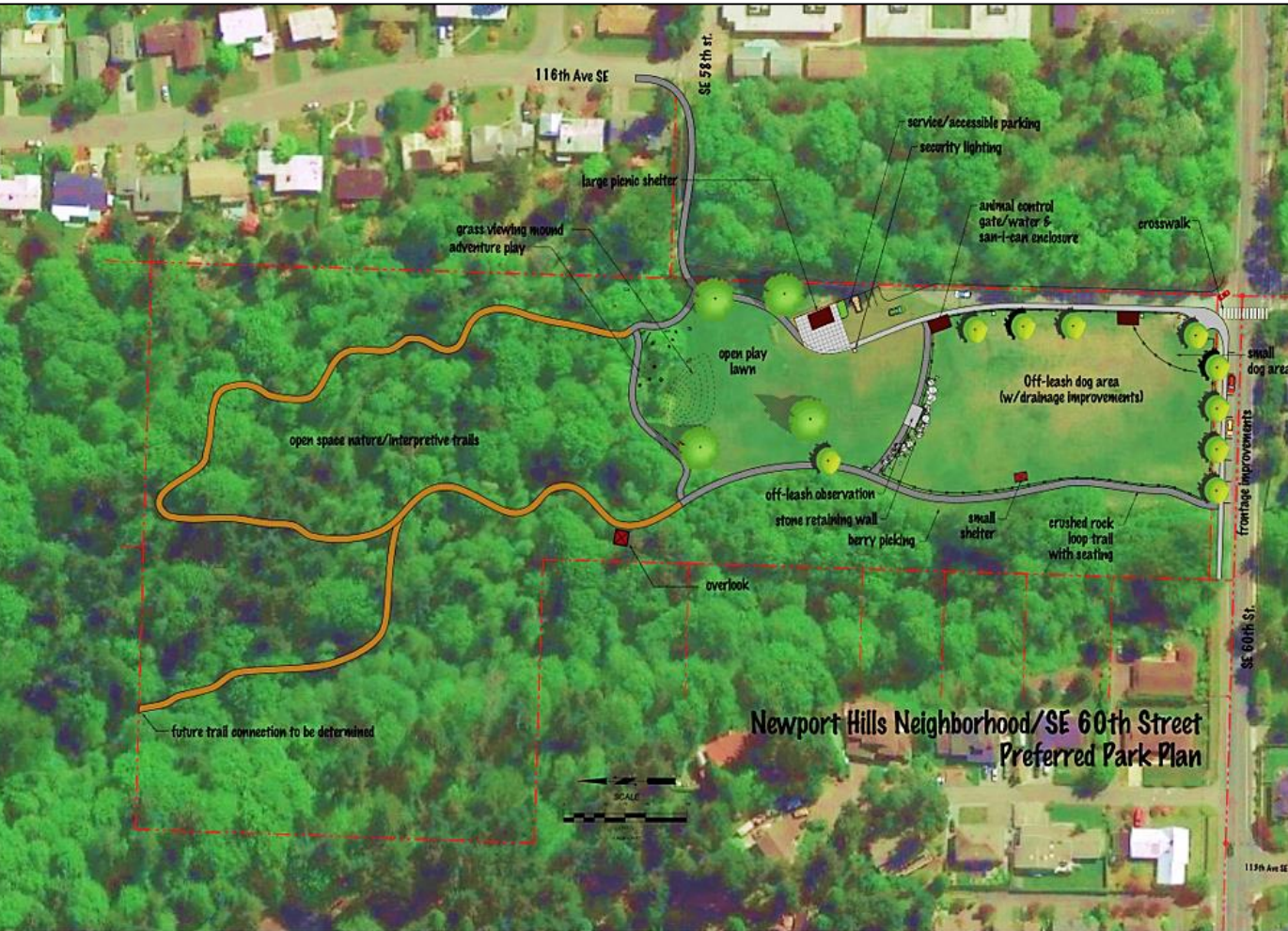


Surrey Downs Park development

Bridle Trails 140th Ave. Park planning



Recent Projects



Bellevue Aquatic Center Feasibility Study Update June 2020



Aquatic Center Feasibility Update



Acquisition of park property:

Lake Sammamish neighborhood park, Mercer Slough addition, and Newport Hills neighborhood park addition

Recent Projects



**Streetscapes
Management**



Facilities enhancement and renovation. Many projects each year.



Discussion & Questions

Ryan Walker, rwalker@bellevuewa.gov, 425-452-4280