

Watershed Management Plan Update



Brian Landau, Utility Systems Planning Manager

Jerry Shuster, Senior Engineer, PE

Christa Heller, Environmental Scientist

November 4, 2021

Environmental Services Commission Meeting



Watershed Management Plan
Our streams, our future



City of Bellevue

Land Acknowledgement

The City of Bellevue acknowledges that we are on the Indigenous Land of Coast Salish peoples who have reserved treaty rights to this land, including the Duwamish (dx^wdəwʔabš), Suquamish Tribe, (dx^wəq^wabs ✓), Muckleshoot Indian Tribe (bəqəls ✓ uł) and Snoqualmie Indian Tribe (sduk^walbix^w). We thank these caretakers of this land who have lived, and continue to live, here since time immemorial.



Purpose

- ❖ Informational - Primarily
- ❖ Feedback requested – Stream values



Watershed Management Plan
Our streams, our future



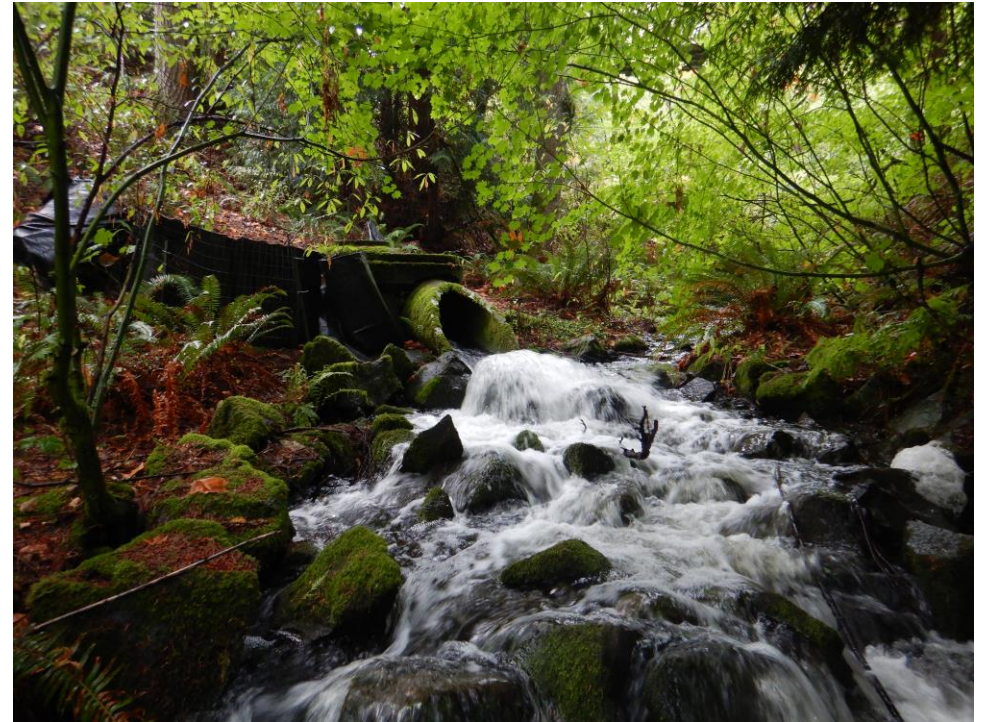
City of Bellevue

Agenda

- ❖ Background/Refresher
- ❖ Overall Progress
- ❖ Community Engagement
- ❖ Next Steps/Path Forward



Watershed Management Plan
Our streams, our future



City of Bellevue

Background/Refresher

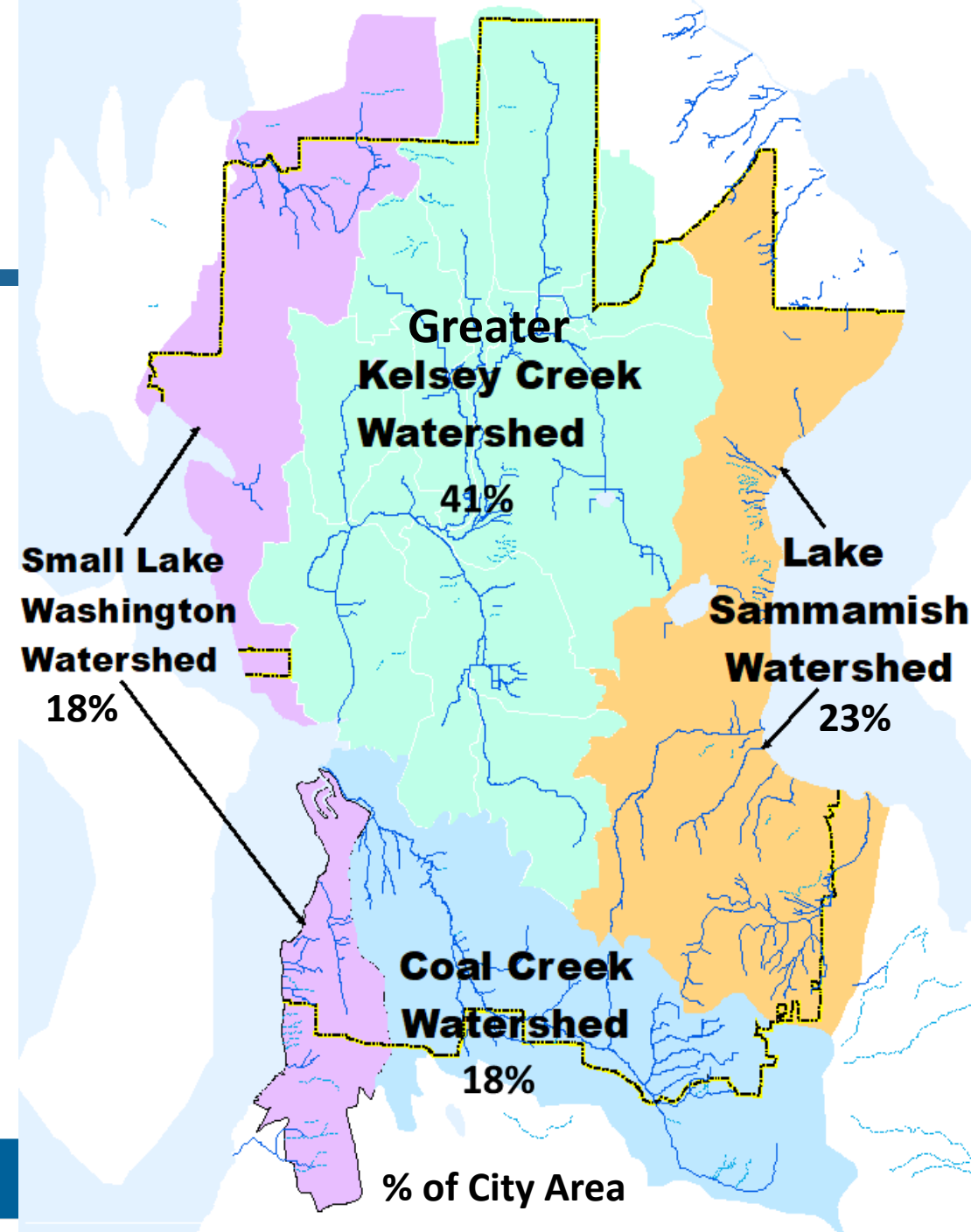
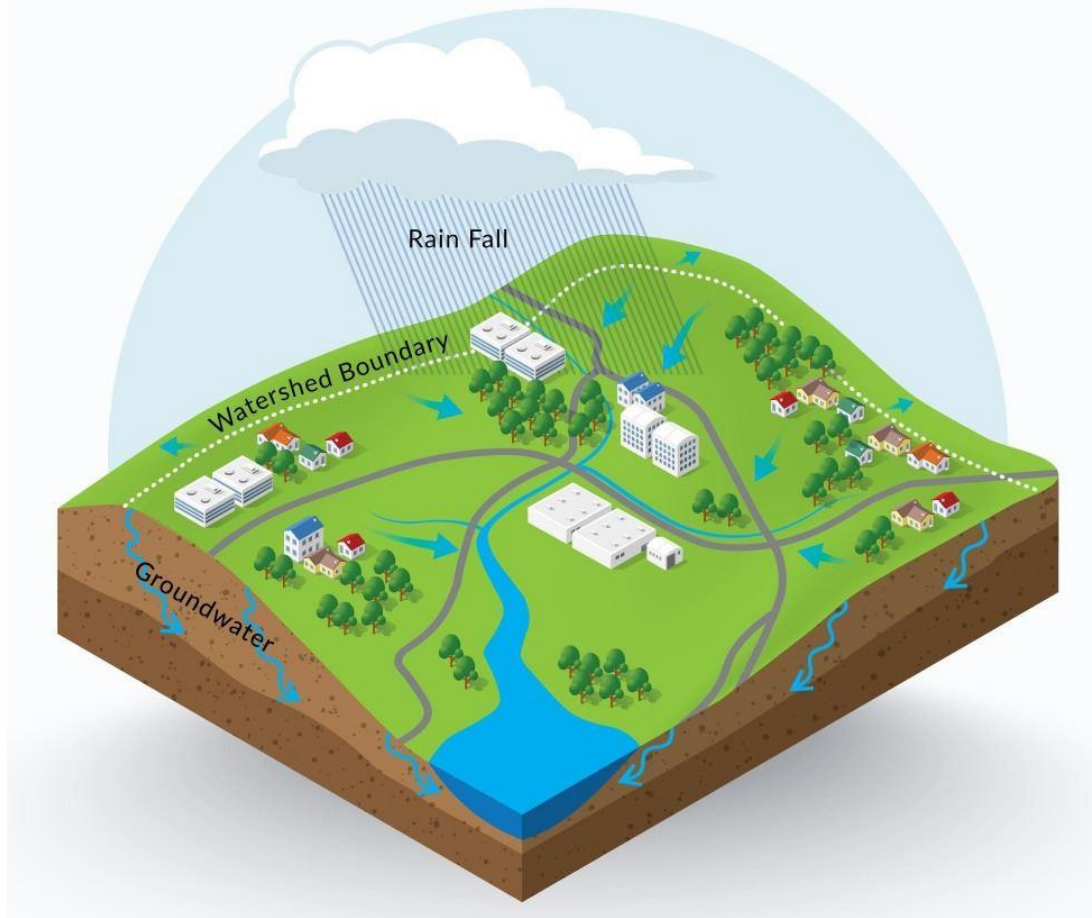


Watershed Management Plan
Our streams, our future



City of Bellevue

Bellevue's Four Major Watersheds



Watershed Management Plan (WMP) Goal

Improve the health
of Bellevue's streams



Watershed Management Plan
Our streams, our future



City of Bellevue

WMP Objectives

- ❖ Optimize stormwater fund investments that will improve stream health over the next 20-years
- ❖ Prioritize actions to improve stream health much sooner than under current approach



Watershed Management Plan
Our streams, our future



City of Bellevue

WMP Recommended Actions

- Projects
- Programs
- Policies/Code
- Maintenance Practices



Projects

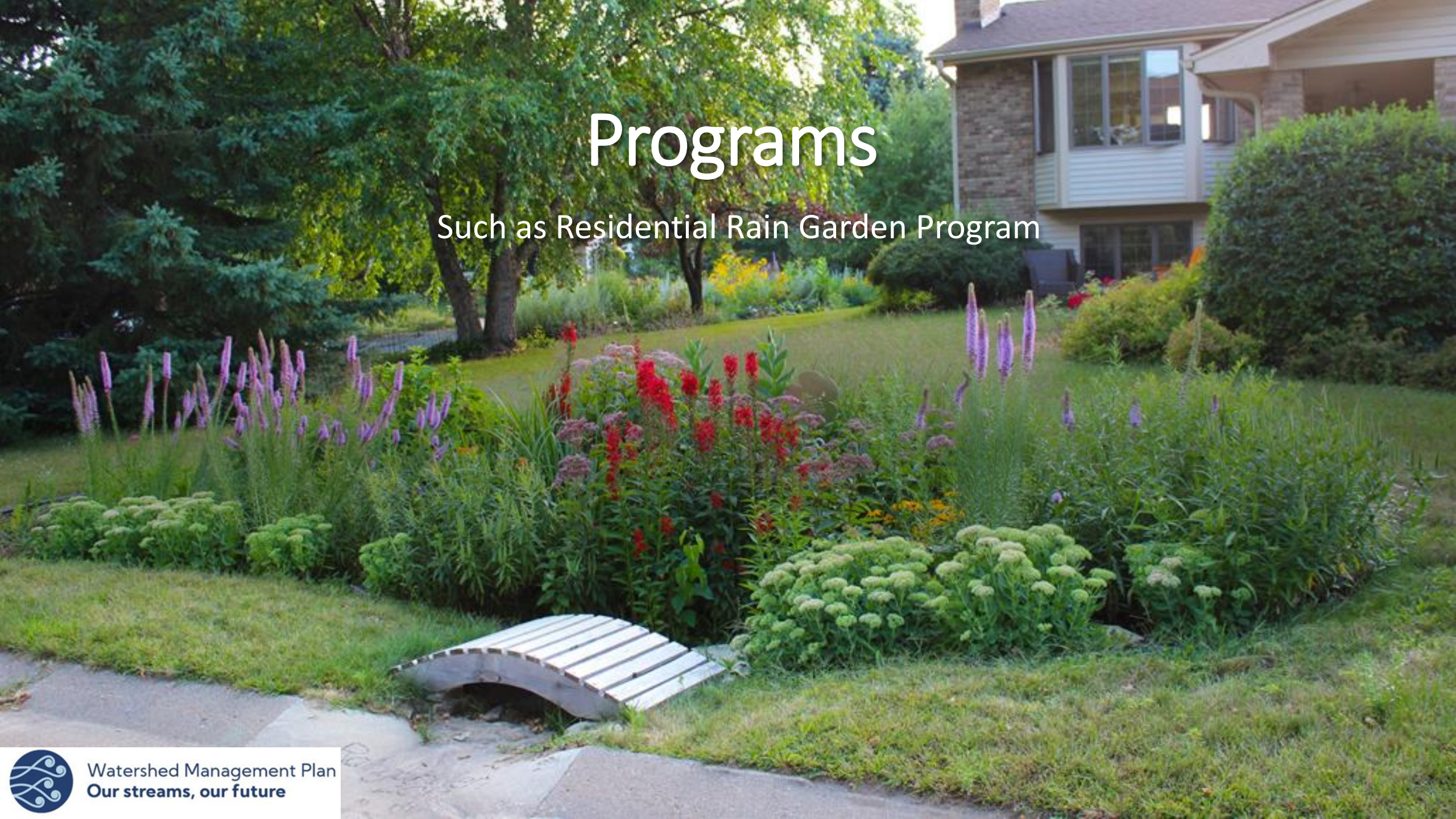
Such as Stormwater Retrofits



Watershed Management Plan
Our streams, our future

Programs

Such as Residential Rain Garden Program



Watershed Management Plan
Our streams, our future



Policies/Code

Such as Fee In Lieu Stormwater Regulations



Maintenance Practices

Such as Increased Street Sweeping



WMP Framework



Overall Progress

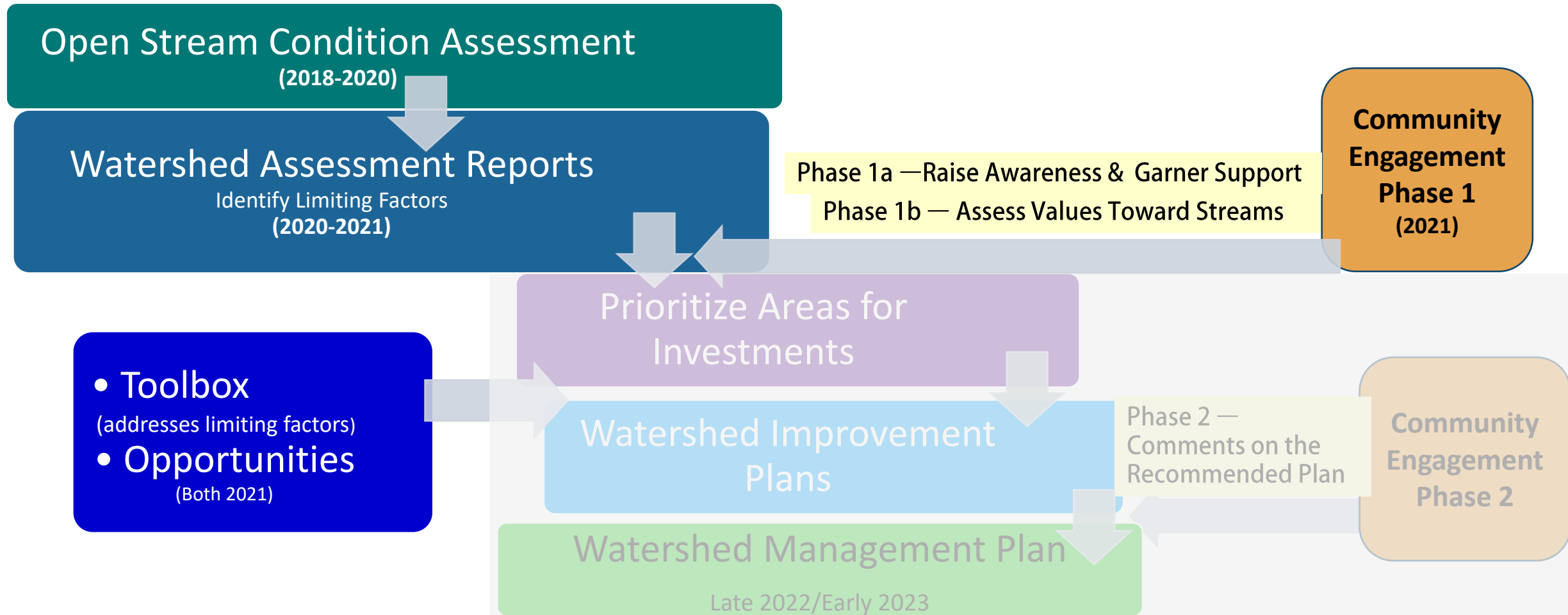


Watershed Management Plan
Our streams, our future



City of Bellevue

Progress - Current Snapshot



Watershed Assessment Reports (ARs) will lead to Management Strategies



- Open Streams Condition Assessment
- Water Quality Information
- Property Information
- Stormwater Infrastructure Information

Factors Limiting Stream Health	Coal Creek Watershed	Greater Kelsey Creek Watershed
Stormwater runoff from impervious surfaces	<div></div>	<div></div>
Loss of Floodplain	<div></div>	<div></div>
Pollutant Transport	<div></div>	<div></div>
Loss of Riparian Vegetation	<div></div>	<div></div>
Sub-Standard Road Culverts and Other Physical Barriers	<div></div>	<div></div>

Prioritize Watersheds

- ❖ Dept of Ecology guidance:
“Give higher priority to basins with receiving waters that show low to moderate levels of impairment. These receiving waters are expected to benefit more quickly as a result of management actions.”



Watershed Management Plan
Our streams, our future



City of Bellevue

Prioritize Watersheds

❖ Factors Considered:

- Level of Degradation
- Recovery Potential
- Importance
- Check against Community Engagement Values



Watershed Management Plan
Our streams, our future



City of Bellevue

Assign Management Strategies by Sub-Basin

❖ Improve

- *Moderately impaired streams*
- *High recovery potential or High importance*
- *Kelsey Creek*

❖ Protect

- *Least impaired streams*
- *High importance*
- *Coal Creek*



Watershed Management Plan
Our streams, our future



Assign Management Strategies by Sub-Basin

❖ Sustain

- *Most impaired streams*
- *Low recovery potential or Low importance*
- *Sturtevant Creek*
- *Not forgotten, low priority*



Watershed Management Plan
Our streams, our future



Progress - Toolbox to Address Limiting Factors

❖ Toolbox of actions includes:

Tool Type

- Projects
- Programs
- Policies/Code
- Maintenance Practices



Community Engagement



Watershed Management Plan
Our streams, our future



City of Bellevue

Community Engagement - Goals

- ❖ Community awareness & support
- ❖ Understand Community's values about streams
- ❖ Inclusive and Equitable



Watershed Management Plan
Our streams, our future



City of Bellevue

Community Engagement - Strategy



MESSAGING



CONTENT/TOOLS



PLATFORMS



City of Bellevue



Watershed Management Plan
Our streams, our future

Feedback Requested

What do you value the most about the streams, lakes and wetlands in Bellevue? (select up to 5 choices)

- Crucial to the local ecosystem, wildlife habitat
- Connect with nature
- Natural beauty
- Important to our health
- Public access/use
- Connect us to our ancestors and indigenous peoples of the land
- Recreation
- Connect with religion or spirituality



Watershed Management Plan
Our streams, our future



City of Bellevue

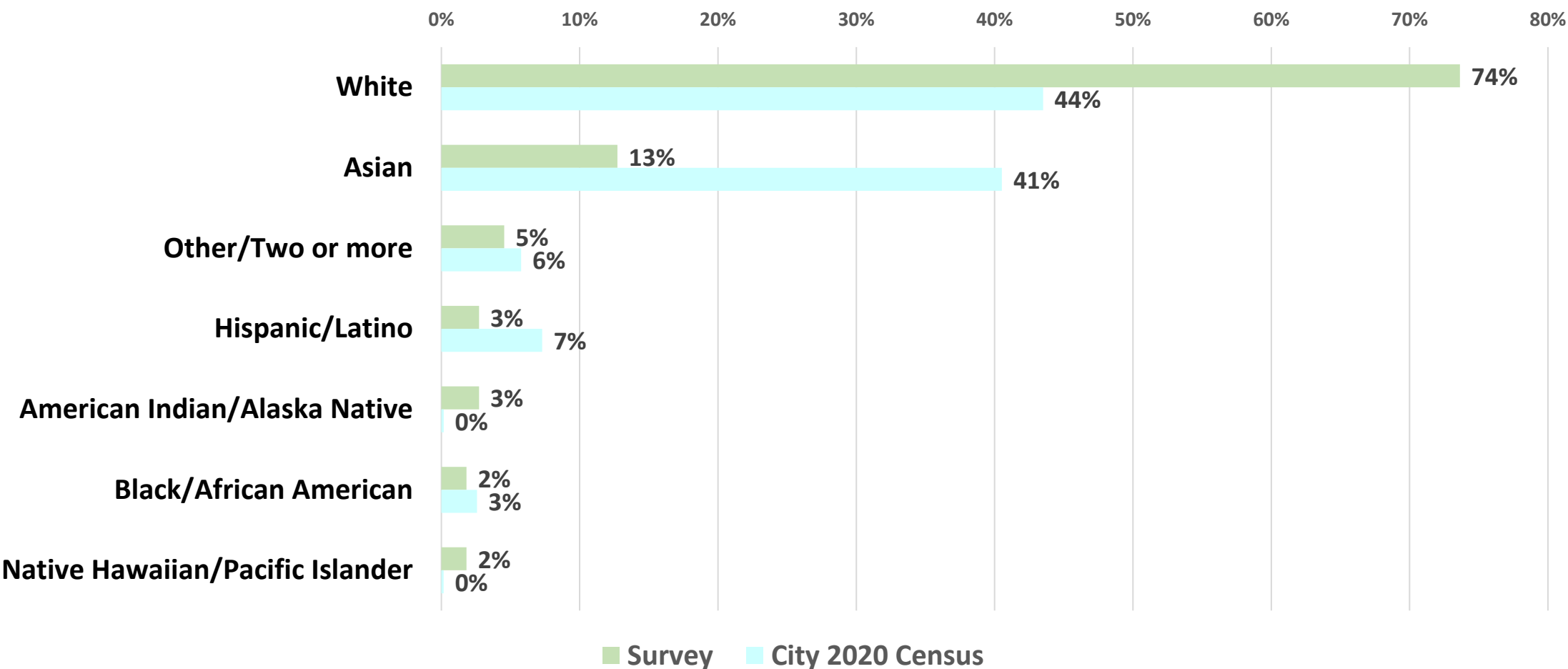
Community Engagement Survey - Preliminary Results



- ❖ Top three community values about streams:
 - Crucial to local ecosystem
 - Important for Wildlife habitat
 - Where they connect with nature

Community Engagement Survey

- Preliminary Results: Racial Identity



Next Steps



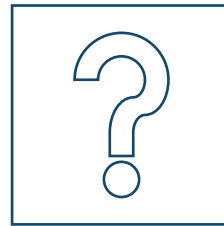
Watershed Management Plan
Our streams, our future



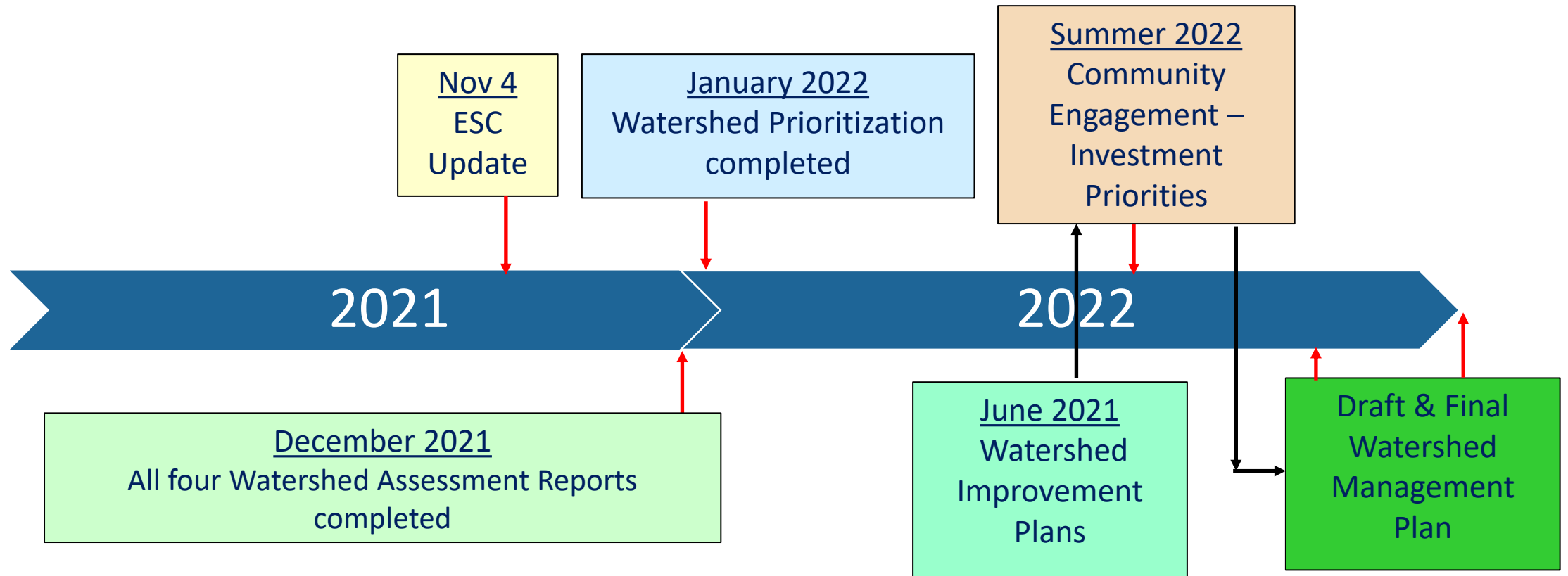
City of Bellevue

Community Engagement – Next Steps

- Incorporate community values into the WMP
- Perform targeted outreach increase demographic representation
- Develop future outreach strategies for community input on:
 - Management strategies
 - Regulations
 - Policies
 - Willingness to pay
 - Other



Next Steps



Early Action Items

- CIP Projects: 2021 – 2024
 - Coal Creek Sediment Pond Upgrade
 - Valley Creek & NE 21st Street Culvert
 - Kelsey Creek / Glendale Reach Improvement
 - Detention Pond Retrofit
 - Water Quality Retrofits
 - Barrier Culvert Removals
- Planning Studies: 2022
 - Mercer Slough Channel Study
 - Culvert Condition Assessment



Summary

Open Streams
Condition
Assessment

Watershed
Assessments
/Prioritization

Watershed
Improvement
Plans

Watershed
Management
Plan

CIP: *Early Action Projects*

