



City of Bellevue

Aquatic Center Feasibility Study Update

Pam Fehrman, PDPM Manager

Ken Kroeger, Project Manager

Parks & Community Services Board

November 9, 2021



Agenda

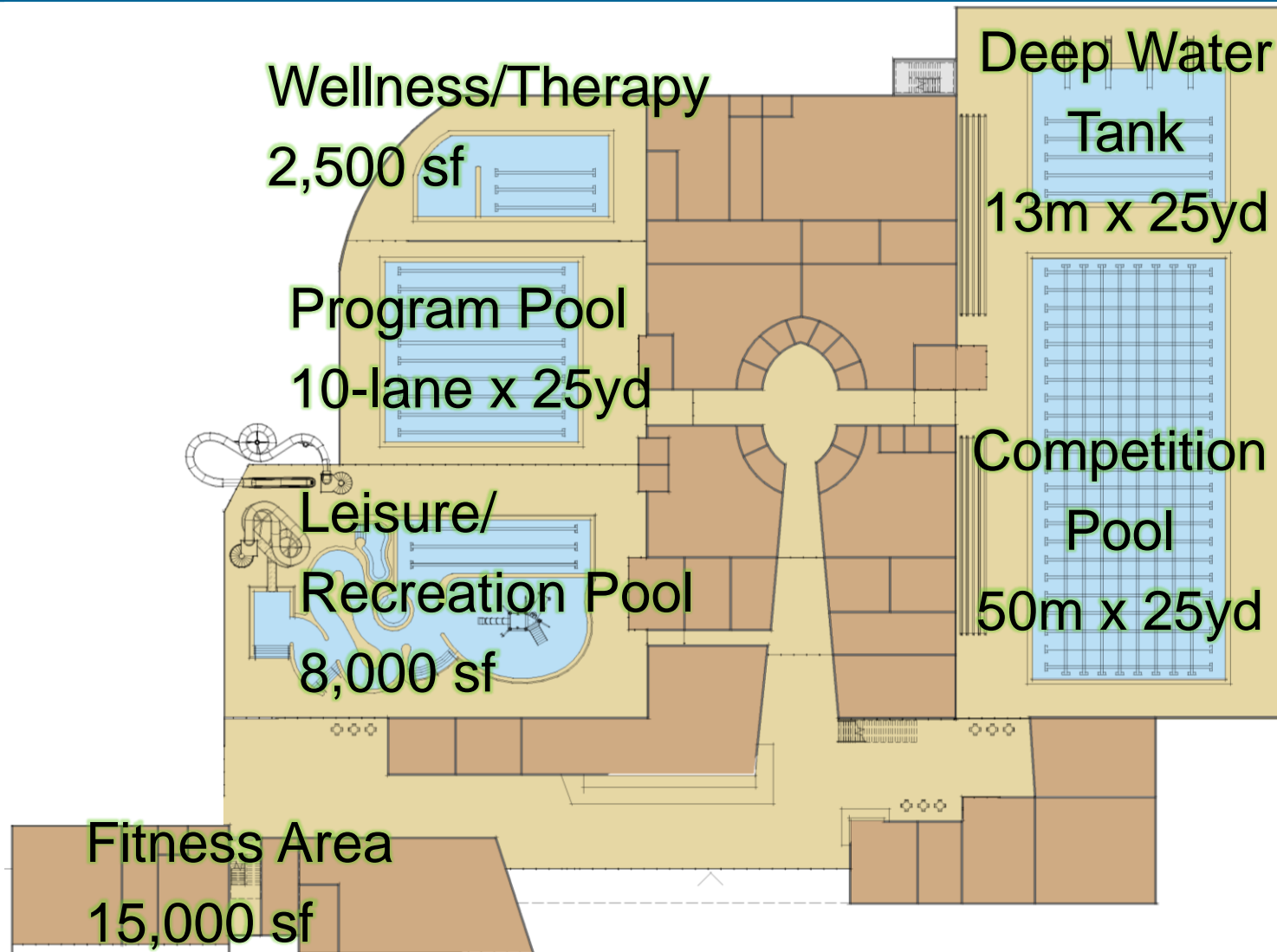
- Preferred Aquatic Facility Concept Plan
- Partnership and Funding Opportunity
- Preferred Aquatic Facility site

Preferred Concept Plan

- Broad based community access and equity
- Programs for *ALL* ages and abilities
- Family friendly and culturally aware
- Flexible space to support community needs
- Environmentally sustainable



Preferred Concept Plan



Preferred Concept Plan

Size: approx. 130,000 sf

Estimated Project Cost: \$125M (2021)

Annual Operating Subsidy: \$500K to \$1M

Cost Recovery: 82% - 91%



Recommended Partnership

Develop a Memorandum of Understanding

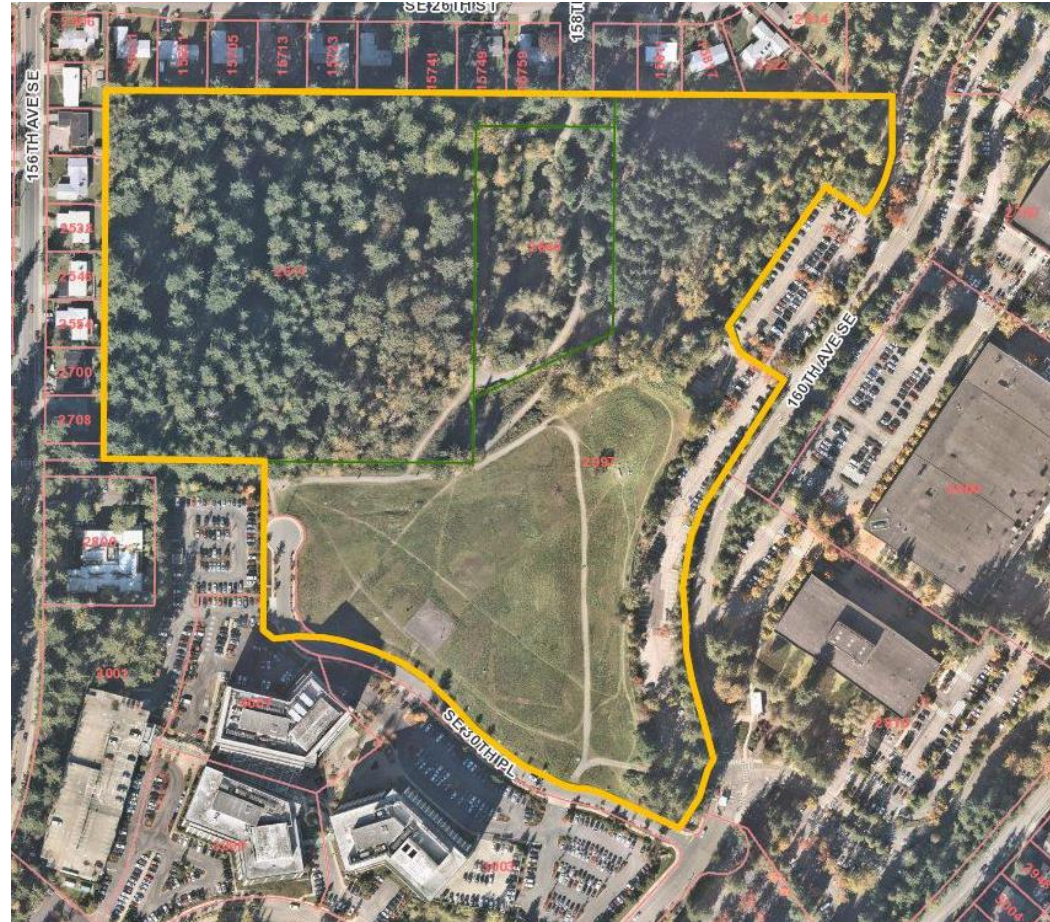
- Research and Assistance
- Grant Support
- Partnership Development
- Fundraising Campaign
 - Feasibility Potential
 - Marketing & Fundraising Plan



Preferred Site

Bellevue Airfield Park

- 27.5 acres
- City owned
- Centrally located
- Easily accessible to I-90 and 405
- Parking agreements with adjacent properties
- Complement other park development/amenities
- Least costly alternative



Bellevue Airfield Park



Adopted Master Plan
Council Adopted 2012



Board Discussion