

2022 Parks & Open Space System Plan Update

PARKS & COMMUNITY SERVICES BOARD

November 9, 2021



Bellevue Parks &
Community Services



City of Bellevue

Agenda

- Welcome (5 min)
- Outreach update (10 min)
- Capital Project Objectives (50 min)
- Closing and next steps (5 min)



Project Timeline



Public Involvement

- Engaging Bellevue hub
- Surveys
 - Statistically valid resident survey
 - Open park user survey
- Presentations
- Publications, social media



City of Bellevue

Home » Input for Parks and Open Spaces!

Input for Parks and Open Spaces!



Do you want to help shape the future of Bellevue's parks and open space? Bellevue Parks and Community Services is updating the long-range Parks and Open Space System Plan and we want to hear from you.

Many of the Bellevue parks and trails we use and treasure today started as ideas in the parks plan! The parks plan provides guidance on all aspects of the parks, trails, and open space system throughout Bellevue, including areas for recreation and play, undeveloped spaces for exploring the natural world, trails that connect communities, and more. The parks plan provides direction specifically on the acquisition, development, and management of parks and open space.

- What do you like about the parks system and what might you like to see more of?
- How can we provide safer and expanded access to parks and trails?
- What can be done to ensure that we are reaching all populations in Bellevue?

Please take 5 minutes and share your input for the Parks and Open Space System plan! The survey will be available through November 8th. It is available in Chinese (simplified and traditional), English, Korean, Russian, Spanish, and Vietnamese.



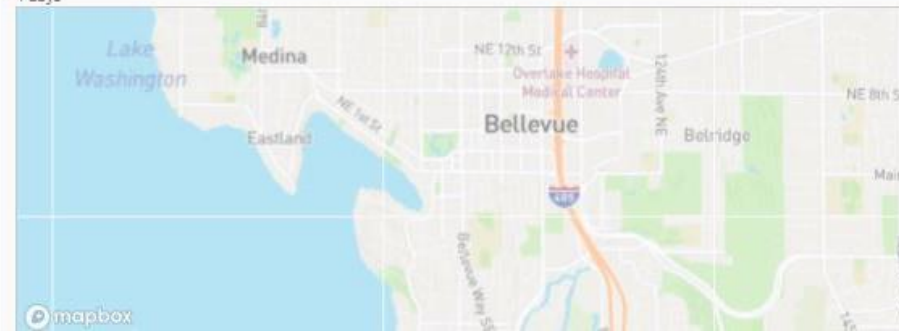
[PARKS AND OPEN SPACE SYSTEM SURVEY](#)

MAP

IDEAS

Map Your Idea!

4 days



Key Dates

Neighborhood Leadership Gathering: Parks and Open Spaces
October 07 2021

Who's Listening

Ryan Walker

Planner
Parks and Community Services

Phone 425-452-4280
Email rwalker@bellevuewa.gov



Documents

- ☐ 2016 Parks and Open Space System Plan
- ☐ Parks and Open Space System Map
- ☐ Park Plan Capital Projects Map 2016
- ☐ Park Plan 1/3 Mile Access Map 2016

Important Links

[Parks and Open Spaces System Plan Website](#)

Lifecycle

- ☒ **Spring 2021**
Project initiated and scoping completed
- ☒ **Summer 2021**
Initial meetings with Parks & Community Services Board; parks and open space inventory
- ☐ **Fall 2021**

Survey Data

Use of Park and Recreation Facilities

	Anyone in Household/Yr
Trail through natural areas	97%
Paved or gravel trails	97%
Community beach, waterfront park, or boat launch	92%
Open areas for unstructured play	90%
Playgrounds	88%
Park with display gardens	88%
Outdoor sports fields or courts	81%
Community / visitor centers	67%
Indoor sports facilities / fitness centers	52%
Designated off-leash dog areas	48%
Swimming pools	38%
Other	6.0

Survey Data

Frequency of Park and Recreation Facility Use

	Average Household Usage/Yr
Paved or gravel trails	7.9
Trail through natural areas	7.4
Playgrounds	5.7
Community beach, waterfront park, or boat launch	5.4
Open areas for unstructured play	5.2
Outdoor sports fields or courts	4.4
Parks with display gardens	3.8
Community / visitor centers	2.0
Indoor sports facilities / fitness centers	1.3
Designated off-leash dog areas	1.2
Swimming Pools	1.2
Other	0.1

Survey Data

Reasons for Visiting Parks and Recreation Facilities

	Anyone in the Household
To enjoy or experience nature and open spaces	84%
To relax	74%
To spend time with family and friends	69%
To exercise outdoors or engage in outdoor sports	67%
Participation in unstructured recreation (e.g. playground)	36%
Participation in structured recreation (e.g. sports)	19%
To exercise in an indoor facility or engage in indoor sports	18%
To attend or participate in a cultural or community event	16%
To participate in a class for fitness, education or personal enrichment	11%
Some other reason	8%

Survey Data

Access to Parks, Trails, or Recreation Facilities

86%

Live or work within a 10-minute
walk of a park, trail, or facility

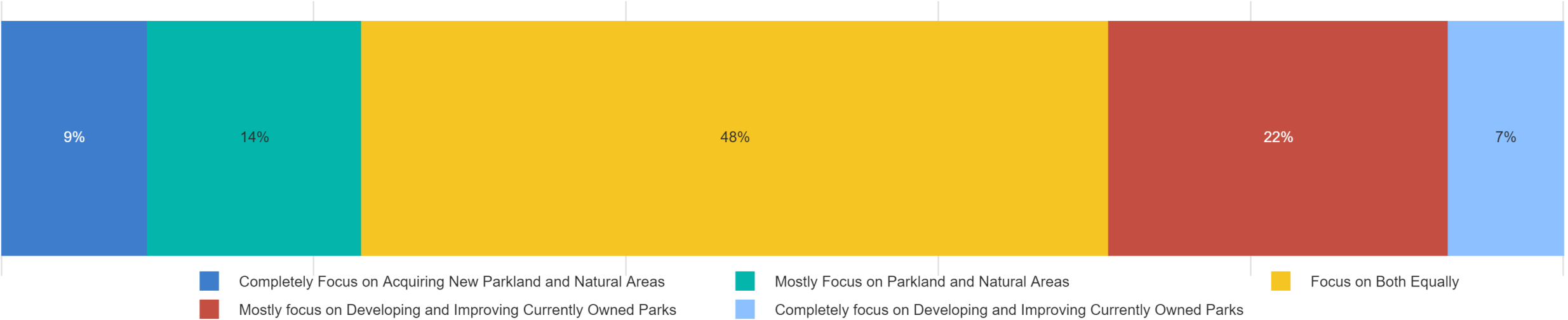
Of those...

94%

State that they can reach the
park, trail, or facility safely

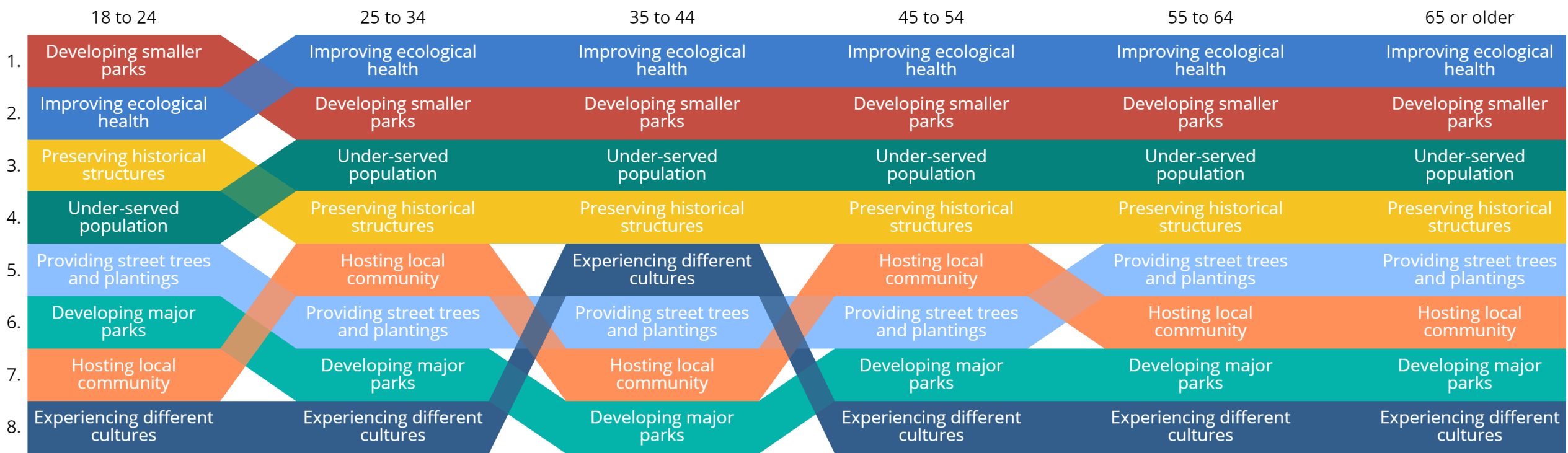
Survey Data

10 Year Focus



Survey Data

Funding Priorities



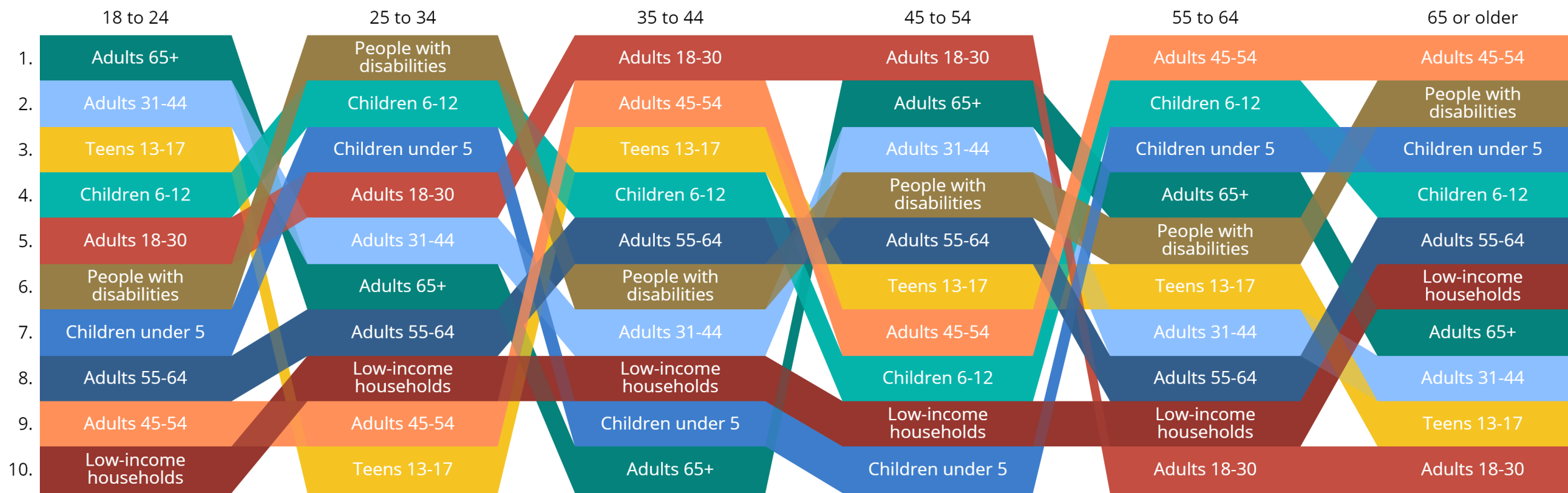
Survey Data

Development Facilities Priorities



Survey Data

Development Groups Priorities



Board Discussion



Capital Project Objectives

Goals

- Identify objectives that may continue forward, be added, or be removed/reframed
- Focus on the big ideas
- Consider what's missing
- Take the next step towards finalizing recommendations

Plan Focus Areas

- **Open Space, Greenways, Wildlife Corridors, & Trails**
- **Park Facilities**
- **Active Recreation Facilities**
- **Urban Park Systems**
- **Waterfront Access**
- **Partnership Opportunities**
- **Historic, Cultural, & Art Resources**



Active Recreation Facilities

Opportunity:	Acquire	Develop	Enhance / Preserve	Recommendation	Notes
North Bellevue Community Center Addition		•	•	Continue forward with edits	Community interest in outdoor amenities
Facilities providing recreation and interaction for diverse cultures, ages and abilities		•	•	Continue forward	
Community center serving Northwest, Downtown and West Bellevue neighborhood areas		•		Continue forward	
Sportfields Synthetic field surfaces Two lighted ballfields at Marymoor Park Lighted sportfields at Bellevue Airfield Park Lighted fields at selected community and school sites Improve school sportfields Ballfield at Wilburton Hill Park Cricket grounds		•	•	Continue forward with edits	
Sport Courts Pickleball facilities		•	•	Add	Enhance narrative

Active Recreation Facilities

Opportunity:	Acquire	Develop	Enhance / Preserve	Recommendation	Notes
Off-leash dog areas re Expand Robinswood Park facilities Complete Newport Hills park facility and a Add geographically dispersed additional sites across the cityin underserved areas north of I-90 		•	•	Continue forward with edits	Enhance narrative & near term focus Newport Hills opening 2022
Enterprise Fund facility improvements Golf courses Robinswood Tennis Center Bellevue Aquatic Center Large group picnic areas with shelters and facilities			•	Continue forward	Reference is to existing aquatic center
New aquatic facility		•		Add	Enhance narrative & near term focus

Urban Parks Systems

Opportunity:	Acquire	Develop	Enhance / Preserve	Recommendation	Notes
Downtown <div> <div>NW & SE quadrant neighborhood parks</div> <div>Downtown Park</div> <div>Ashwood Park</div> <div>NW quadrant neighborhood parks</div> <div>SE quadrant neighborhood parks (NE 2nd Place Properties</div> <div>Main Street linear buffer greenway</div> <div>Urban Trail System</div> <div>Grand Connection</div> <div>Community center serving Downtown</div> </div>	•	•	•	Continue forward with edits	

Urban Parks Systems

Opportunity:	Acquire	Develop	Enhance / Preserve	Recommendation	Notes
Bel-Red Open space and off-street trail development Multi-purpose trail development Park acquisition and development (West Trib Property)	•	•		Continue forward with edits	Near term focus
Eastgate I-90 Corridor Open space and off-street trail development Multi-purpose trail development Park acquisition and development	•	•	•	Continue forward	Neighborhood parks acquisition and connections to parks is near term focus
Wilburton Multi-purpose connections to Eastrail corridor Eastrail corridor development Grand Connection Park acquisition and development on north end Open space and natural systems enhancement	•	•	•	Add	Enhance narrative Trail connections and initial Eastrail development is near term in partnership with King Co.



Waterfront Access

Opportunity:	Acquire	Develop	Enhance / Preserve	Recommendation	Notes
Meydenbauer Bay Park		•		Continue forward	Phase 2 development near term focus
Meydenbauer Bay Park to Downtown Park connection	•	•		Continue forward	
Connect Enatai Beach Park to Mercer Slough Nature Park	•			Remove	
Complete phased development of Enatai Beach Park		•		Continue forward	Enhance narrative
SE 40th Boat Launch addition	•	•	•	Continue forward with edits	
Sweyolocken Boat Launch redevelopment		•	•	Continue forward with edits	
Lake Sammamish waterfront	•	•		Continue forward	Enhance narrative with future park addition and lake connection

Waterfront Access

Opportunity:	Acquire	Develop	Enhance / Preserve	Recommendation	Notes
Chism Beach redevelopment			•	Continue forward	Shoreline restoration needs
Clyde Beach redevelopment			•	Continue forward	Shoreline restoration needs
Additions to existing waterfront parks	•			Continue forward	
Additional established locations for non-motorized boat launch, such as street ends	•	•		Add	
Lake Bellevue access	•	•		Add	



Partnership Opportunities

Opportunity:	Acquire	Develop	Enhance / Preserve	Recommendation	Notes
Elementary, middle and high school recreation site improvements			●	Remove	Partnership better reflected in line 3
Partner with other City departments to create parks	●	●	●	Continue forward with edits	
Partner with other public agencies to create fund, or manage parks and trails , including but not limited to Bellevue School District, Cascade Water Alliance, Sound Transit, Seattle Public Utilities, Washington State, King County and Bellevue College	●	●	●	Continue forward with edits	
Partner with private non-profit or for-profit organizations to create parks where advantageous to achieve capital project goals, such as the new aquatic facility	●	●	●	Continue forward with edits	
Aquatic facility	●	●		Moved	Included in the line above

Partnership Opportunities

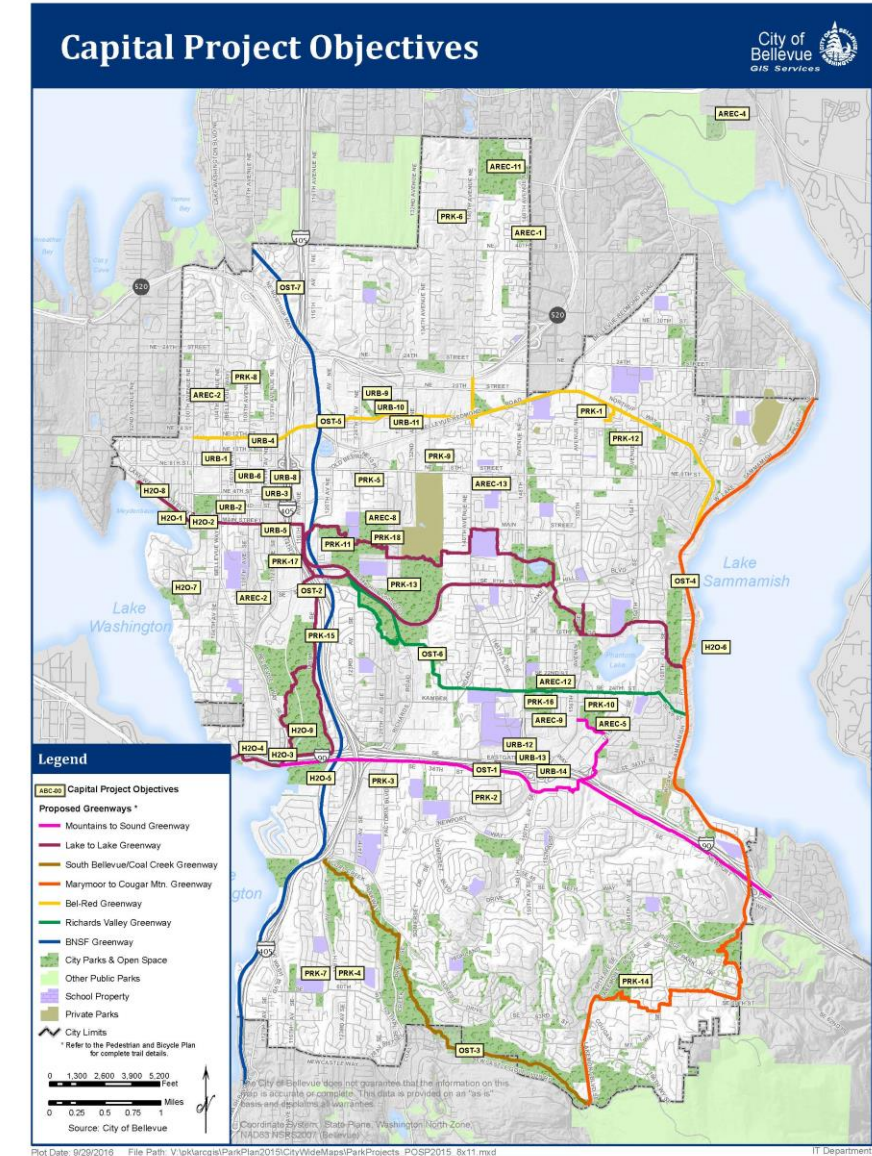
Opportunity:	Acquire	Develop	Enhance / Preserve	Recommendation	Notes
Partner with non-profit conservation organizations to advance open space protection and restoration opportunities	•			Add	
Historic building preservation			•	Continue forward	
Cultural arts center	•	•		Continue forward	

Historic, Cultural, and Art Resources

- **Capital Project Objectives built into other focus areas, namely partnerships.**
- **Parks & Community Services stewards many historical and cultural properties**
- **Eastrail is a future opportunity to include art**
- **Included in renovation plans**
- **Look to align with other policy**

Open Space, Greenways, Wildlife Corridors and Trails

Opportunity:	Acquire	Develop	Enhance / Preserve	Recommendation	Notes
Greenway Connections/Extensions Mountains to Sound Greenway Trails Lake to Lake Greenway Trails South Bellevue / Coal Creek Greenway Trails Marymoor to Cougar Mountain Greenway Trails Bel-Red Greenway Trails Richards Valley Greenway Trails Eastside Rail Corridor (ERC) Greenway Trails Eastrail corridor	●	●	●	Continue forward	Enhance Eastrail narrative. Near-term activity focused on Mountains-to-Sound, Lake-to-Lake, BelRed, and Eastrail.
Trail Connections/Extensions: Enhance connectivity and walkability by creating connections and improving wayfinding between neighborhoods and local parks	●	●		Continue forward	



Open Space, Greenways, Wildlife Corridors and Trails

Opportunity:	Acquire	Develop	Enhance / Preserve	Recommendation	Notes
Native Growth Protection Areas (NGPA) Stewardship	•			Remove	No longer proactively pursuing transfers of private NGPA's to public ownership.
<u>Open space acquisition to conserve natural resources and/or expand or connect existing open space</u>	•			Add	
<u>Open space stewardship that protects tree canopy and emphasizes sustainable land management, including restoration, as funding and opportunities allow.</u>			•	Add	
<u>Pedestrian and Bicycle Implementation Initiative related to trail and park connectivity, including</u> Pedestrian and Bicycle Transportation Plan Implementation	•	•	•	Continue forward with edits	

Park Facilities

Opportunity:	Acquire	Develop	Enhance / Preserve	Recommendation	Notes
Add neighborhood parks in underserved subareas: BelRed (see Urban Park Systems) Crossroads Downtown (see Urban Park Systems) Eastgate Factoria Newport Hills Wilburton	•	•		Continue forward	Near term focus in BelRed and Eastgate/Factoria.
Develop existing undeveloped properties including, but not limited to: Bridle Trails BelRed (West Trib Property) Downtown Newport Hills North Bellevue (Chapin Property) Wilburton (Glendale Property)		•		Continue forward with edits	Near term focus Existing Newport Hills property development in process

Park Facilities

Opportunity:	Acquire	Develop	Enhance / Preserve	Recommendation	Notes
Add to or e Continue phased development of existing community parks, including but not limited to: Bellevue Airfield Park Bellevue Botanical Garden Crossroads Park Eastgate Park/South Bellevue Community Center Kelsey Creek Park Lewis Creek Park Mercer Slough Nature Park Robinswood Park Surrey Downs Park Wilburton Hill Park	●	●		Continue forward with edits	Planned acquisition and development of Lewis Creek and Surrey Downs are complete.
Pursue acquisitions to expand community parks or natural areas, such as Coal Creek, as opportunities arise	●			Add	

Board Discussion



Prioritization Criteria

1. **Parks System Plan consistency**
2. **City Council priorities**
3. **Maintenance and operations impacts**
4. **Citizen input**
5. **Geographic distribution**
6. **Multiple benefits (user groups and/or plans)**
7. **Special funding availability**
8. **Affordability**
9. **Neighborhood impacts**
10. **Site suitability**
11. **Economic impact**
12. **Urgency**

Next steps

Plan Element	Status
Community Profile Natural Resource Characteristics System Inventory Financing Maintenance, Renovation	Updating with current information
Public Involvement Process	Through November
Mapping Level of Service Analysis	Ongoing
Capital Project Recommendations	Refining

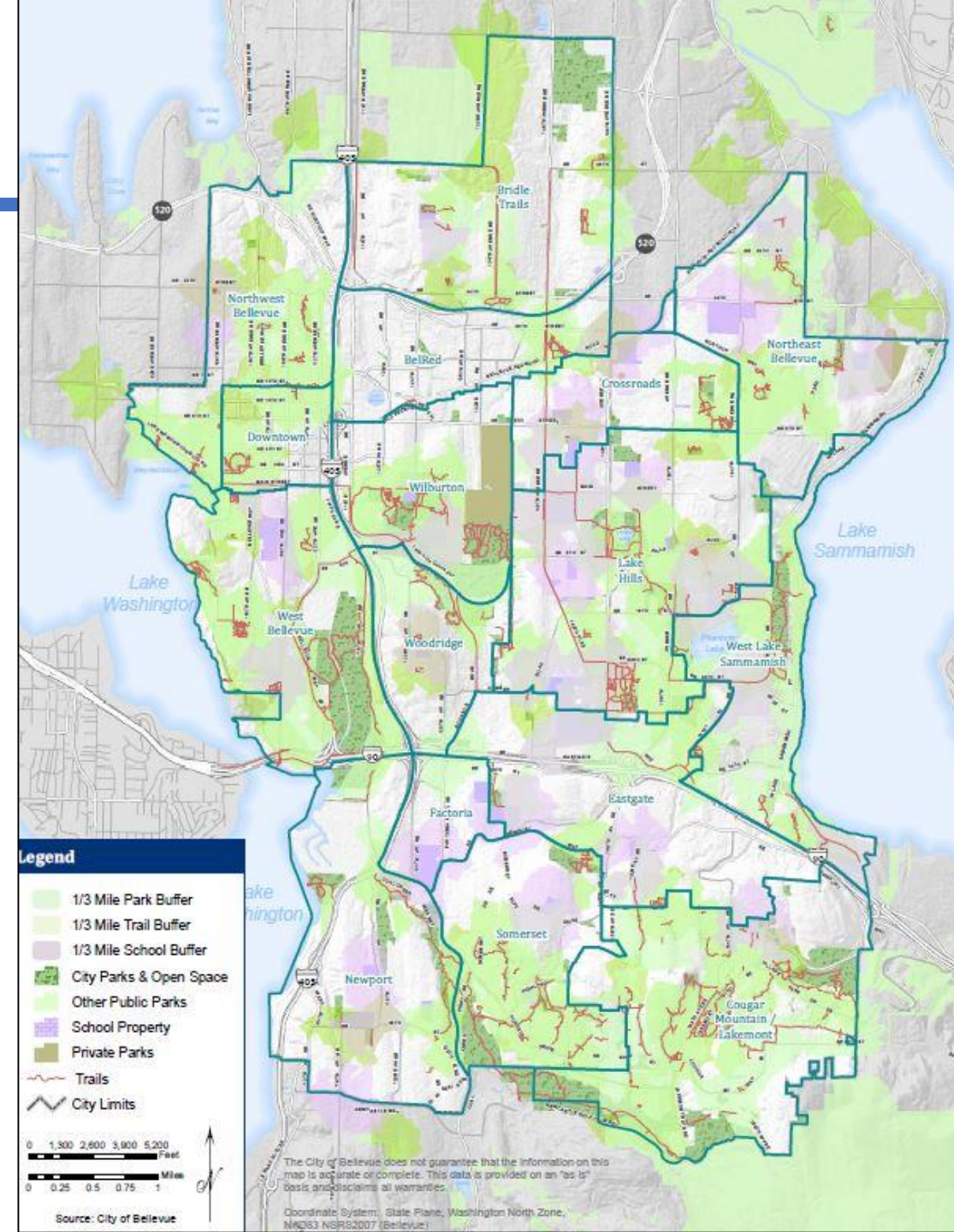


Thank you!



Walkable Access

- **Goal: Ensure that 100% of Bellevue residents are within 1/3 mile of a park, open space, or trail by 2050**
- **Currently, about 73.5% of residents that meet this criteria**



Areas of Interest

Purple – Area of interest for parks density and access

Blue – Area of interest for primarily for access

